

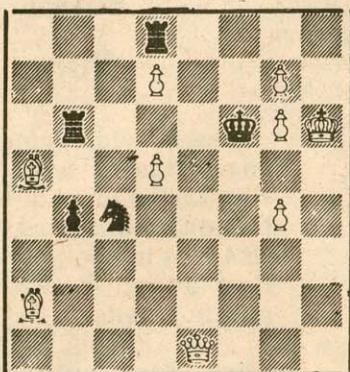
# CHESS



By George Koltanowski

PROBLEM NO. 50

Black: 5



White: 9

White to play and mate in two moves. Solution on Friday. The solution to problem no. 49 of last Friday: N-N5.

\* \* \*

**KOLTANOWSKI IS COMING ON FRIDAY!**



Can Anyone in Valencia Valley Beat Him?

The big event is just two days away! On Friday evening, International Master George Koltanowski will appear in The Signal's Chess Exhibition, the first of its kind in the history of this valley. Beginning at 7:30 p.m. at Cal Arts, the famous chess master will lecture on the recently-completed Fischer-Spassky match, answer all questions from the audience, play a sample blindfold game, and then perform a simultaneous chess match against 25 of the best local players. It should be an evening of excitement and entertainment for young and

old alike. And it's all free, courtesy of this newspaper.

### The Contest Winners!

The solutions are in for The Signal's special chess problem contest published last week. Thirty-one correct solutions were received and, as promised, seven of the winners were picked in a random drawing to play in the simultaneous match Friday night. The lucky winners are: Keith Crasnick, Mike Foster, Robert Freeman, Robert Batista, Bill Rieser, Warren Leary, and Ross Wright. Congratulations! You seven will now join the 18 players picked from the recent chess tournament to play Koltanowski on Friday. Please bring your best chess set.

Other contestants who submitted correct solutions were Tim Colebank, Larry Rauter, Ralph Brown, Greg Bitgood, Alan D. Lane, Paul Patane, Martin Rubin, Mike Sipka, Larry Wedhoff, Dr. Orville Weaver, Henry J. Weiss, Frank Dobrovolny, Tap Canutt, Don Lund, Dave Morrow, Dave Commons, Dale Goudey, Bill Kath, Reid Olson, Sharon Lee Risk, Rodney Skinner, Dan Devor, Charles Hooper and Fred Risk. Congratulations to all of you! Two alternates have been picked from this group to play in the simultaneous, should a board become vacant, so all are advised to attend the exhibition.

### The Solution

The solution to this problem was a tricky one: R-Q4ch! It's a five-fold sacrifice and black has no escape:

- 1. . . . BxR, 2. P-B4mate.
- 1. . . . KxR, 2. Q-Q3 mate.
- 1. . . . NxR, 2. NxP mate.
- 1. . . . BPxR, 2. N-B6 mate.
- 1. . . . KPxR, 2. Q-B5 mate.

R-Q4ch was the "key move" in this problem and was the only move that forced a mate in two moves. Three other solutions were submitted by a number of contestants, but they allowed possible escapes. R-QB4 could be countered with B-Q5, preventing checkmate in the following move. The key move NxPch was also not valid, as K-Q3 escapes mate. Another move, K-B5, is strong, but allows black to move N-N2ch, and white then has to get his own king out of check on the second move.

Thanks to all of the readers who entered this contest. If you like tricky problems, keep following this column in every Wednesday and Friday Signal. Big prizes are coming.

\* \* \*

### THE LINE-UP

The following is the official line-up of the Valencia Valley players scheduled to face George Koltanowski Friday night. Come and root for your friends and local champions!

Board	Player	Board	Player
1.	Don Crawford	14.	Kim Monson
2.	Tim Hood	15.	Bill Rieser
3.	Robert Freeman	16.	Keith Crasnick
4.	Monica Schmelling	17.	Monte Reed
5.	James Curtis	18.	Peter Gelfand
6.	Jon Newhall	19.	Linda Wedhoff
7.	Mike Foster	20.	Tony Martinelli
8.	Steve Phillips	21.	Murphy Bruno
9.	Julie Volkman	22.	Leonid Hambro
10.	Robert Fisher	23.	Ruth Newhall
11.	Stewart East	24.	Robert Batista
12.	Kevin Gordon	25.	Ross Wright
13.	Warren Leary		

Starting time is 7:30 p.m. in the Main Gallery at California Institute of the Arts. Cal Arts is located atop the hill at the McBean exit and the Golden State Freeway. Enter the campus from McBean Parkway; parking is available in the main lot on top of the hill to the west of the building. The main gallery is on the same level as the parking lot, immediately inside the entrance. Coffee will be available to all participants and spectators. Admission is free.