

# Chess / Kasparov snubs Pasadena

By Shelby Lyman

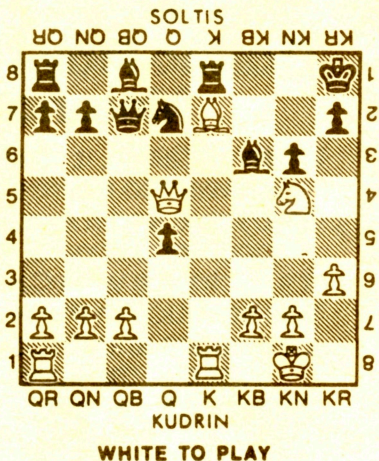
**A**N unhappy fiasco has sent tremors through the world of chess. The much anticipated Semi-Final Candidates Match for the World Championship between 52-year-old Viktor Korchnoi, a Soviet defector, and 20-year-old Gari Kasparov of Baku, Azerbaijan Soviet Socialist Republic, aborted abruptly Aug. 6 when Kasparov failed to appear for the opening round at Pasadena City College in Pasadena.

The Pasadena venue had been selected from several bids by the president of the World Chess Federation (FIDE), Florencio Campomanes. And almost immediately, Soviet chess authorities protested bitterly.

Neither player, they said, had named Pasadena on its list of preferred sites. But Korchnoi and Kasparov had picked Rotterdam, Holland as their first and second choices. The Soviet Chess Federation also complained about anticipated security arrangements for Kasparov in Pasadena.

At a special meeting of the FIDE Executive Committee, held in Madrid July 30, the Campomanes decision was firmly supported by an 8-2 vote.

AFTER 18...K-R1



Shortly afterwards the Soviet federation announced its decision not to come to Pasadena.

Apparently, the Soviets are hoping to get a reversal of the forfeiture at an October congress of FIDE in Manila, Philippines. Already, it seems, they have been able to garner some support in Western chess circles.

In his prestigious column in the London Guardian, Leonard Barden has described the choosing of Pasadena as widely unpopular in Europe.

The Dutch grandmaster Jan Tim-

## Kudrin-Soltis

An 11th-round quickie from the recent U.S. Championship Tournament.

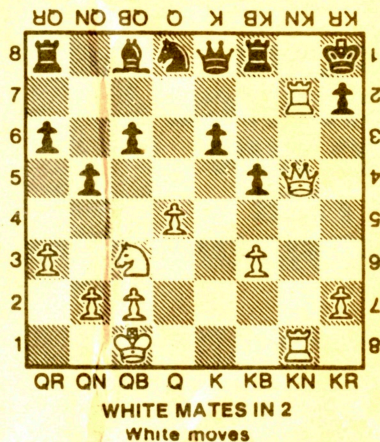
- |     |        |           |
|-----|--------|-----------|
| 1.  | P-K4   | P-QB3     |
| 2.  | N-QB3  | P-Q4      |
| 3.  | N-B3   | P-KN3     |
| 4.  | P-KR3  | B-N2      |
| 5.  | P-Q4   | N-B3      |
| 6.  | B-Q3   | PxP       |
| 7.  | NxP    | NxN       |
| 8.  | BxN    | O-O       |
| 9.  | O-O    | N-Q2      |
| 10. | B-KN5  | Q-N3      |
| 11. | R-K1   | R-K1      |
| 12. | B-Q3   | P-QB4     |
| 13. | BxKP   | PxP       |
| 14. | B-QB4  | Q-B2      |
| 15. | BxPch  | KxB       |
| 16. | N-N5ch | K-N1      |
| 17. | Q-B3   | B-B3 a    |
| 18. | Q-Q5ch | K-R1      |
| 19. | Q-B7   | Resigns b |

a Desperation  
b The threats of (20) QxP mate and (20) QxRch are decisive.

man, one of the world's strongest players, commented: "If the opinion of the participants in general is ignored, there is no point to raise the question of a preferable venue."

The venerable Argentine grandmaster Miguel Najdorf agreed: "Chess masters must play where they like the conditions." ■

## Beginner's corner



Hint: White's advanced rook is in the way.

## Where to play

The Burlingame-San Mateo Chess Club meets 7:30-11:30 p.m. Thursdays in the Burlingame Recreation Center, 850 Burlingame Ave. (415) 342-1137.

## Today's solution

(1) Rxf7ch! QxR (2) Q-N7 mate.