

TOURNAMENT CALENDAR

22-23	March	Carlmont YMCA Open Chess Tournament and Bay Area High School Chess Championship	CFNC	San Carlos
28-30	MARCH	FIFTH VISALIA AMATEUR OPEN	USCF	VISALIA
30	MARCH	OAKLAND CHESS CLUB'S SECOND ANNUAL FOUR-MAN SECTIONAL	USCF & CFNC	OAKLAND
1-5	April	Mexican National Open	-	Tijuana
19-20	April	Fourth Annual Peninsula Open	?	Sunnyvale
9-10	May	Eleventh Annual School Open Chess Tournament (tentative)	?	Alameda
24-25	MAY	WALNUT CREEK OPEN	USCF	WALNUT CREEK
14	JUNE	CCCA'S SUN VALLEY SHOPPING CENTER CHESS EXHIBITION AND RAPID TRANSIT TOURNAMENT (TENTATIVE)	-	CONCORD
28-29	JUNE	FIFTH MONTEREY INTERNATIONAL OPEN CHESS TOURNAMENT	USCF	MONTEREY
25	June	Seventh Annual Chess Festival	-	Hayward
19-20	JULY	CCCA ADULT AND JUNIOR CHAMPIONSHIP (TENTATIVE)	USCF & ?	JR.
23-24	August	Oakland Chess Club's Sixth Annual Summer Tournament	CFNC	Oakland
31	August	Sonoma State College Open	?	Rohnert Park
-1	September			
27-28	September	Fourth Annual Northern California Class Championships	?	Sunnyvale
13-14	DECEMBER	OAKLAND CHESS CLUB'S FOURTH ANNUAL SAN FRANCISCO BAY AREA AMATEUR OPEN CHESS CHAMPIONSHIP	USCF	OAKLAND

*

Tournament Organizers: Please let us know as soon as possible of tentative or definite tournament dates, so that we may be able to reserve the dates for you in the "Tournament Calendar." Details for tournaments will be found in the "News" section. CCCA'S AND CCCA AFFILIATES' USCF TOURNAMENTS ARE CAPITALIZED IN THE "TOURNAMENT CALENDAR" FOR MEMBERS' SPECIAL ATTENTION.--EDS.

NEWS

Pickler, Garosi, Gates Win at Davis
By SERGIUS VON OETTINGEN

Tournament Director, UC Davis Chess Club

In October-December 1968 the UC Davis Chess Club held their Sixteenth Davis Rated Tournament. Gary Pickler won the A Section with a 5-0 score. Ali Estilai, a graduate student from Iran, was second (3-2); M. El Sayed, third (2½-2½); S. Sosnick, fourth (2-3), nosing out G. Lee and Richard O. Hansen (1½-3½ and 1-4, respectively). Sergius Von Oettingen unfortunately had to withdraw (½-1½).

F. Garosi won the six-man round robin B Section with a 4½-½ score. Legesse Genbetu, a graduate student from Ethiopia, and D. Jacobsen tied for second with 3-2 tallies, topping R. Pipkin, who achieved an even 2½-2½ result. M. Langhans and F. Leffingwell tied for fifth with a point each.

W. Guiles's perfect 5-0 score won the C Section ahead of Richard Roach, who posted a 4-1 score. R. Paige, W. Pentz, and S. Rubenstein all scored two points to tie for third. S. Bieber finished sixth with an 0-5 score.

Ali Estilai was the highest-placed student, and Richard Roach, the highest placed unrated player. Gene Lee's victory over M. El Sayed was the biggest upset of the tournament, and Legesse Senbetu had the highest gain in USCF rating points.

The Seventeenth Davis Rated Tournament is already in progress, covering the period from January through March.

*

\$300 First Prize at Mexican National Open
By GORDON S. BARRETT

Editor, Terrachess

During Easter week, 1-5 April, the Mexican National Open will be held at the Casino de Telefonistas, Second and "H" Streets in Tijuana, Mexico. The prizes will be awarded by the President of Mexico, the State Governor, and the Mayor. First prize is \$300; second, \$150; third, \$75, plus trophy for each. There are also large money prizes for top Expert and for top Class A, B, and C. The entry fee is \$13 (\$6.50 for juniors under 18). For further information, contact Gordon S. Barrett, Tournament Director, 12536 Daryl Avenue, Granada Hills, CA 91344.

*

(Continued on p. 5.)

Editors
Central California
Chess Association
c/o Post Office Box 1622
Oakland, California 94604
Telephone: (415) 582-1973

Scacchic Voice is edited and published bimonthly (with monthly supplementary issues as needed) by Martin E. Morrison and Elwin C. Meyers, Editors, CCCA, in accordance with Article IV, Section iv (f) of the Bylaws of the CCCA, which directs the Editors to "edit and publish the official organ of the CCCA and all business proceedings of the CCCA, to provide a system of communication among the members and affiliates of the CCCA." Every member of the CCCA, i.e., every member of a chess club or organization affiliated to the CCCA, automatically receives a Scacchic Voice subscription mailed to his home gratis.

The CCCA is a nonprofit, democratic organization and an affiliate of the United States Chess Federation. The objects of the CCCA are: "(a) to serve as a regional coordinator of chess activities, clubs, and players; (b) to conduct or sponsor tournaments, leagues, matches, and other forms of chess competition, alone or in conjunction with other chess clubs or organizations; (c) to maintain a system of ratings of the members of the CCCA to supplement those of the USCF; (d) to provide an organ of communication among the members and affiliates of the CCCA, to be published not less than bimonthly; (e) to support the affiliates of the CCCA in every feasible way; (f) to promote the game of chess and the USCF" (Article II, Section i, of the Bylaws of the CCCA). Any Central California chess club or organization supporting these objects is invited to apply for affiliation to the CCCA, with benefits for its members which include a Scacchic Voice subscription, a USCF-CCCA rating, discounts on chess books, equipment, and USCF memberships, and full privileges of participation and voting at CCCA business meetings.

NONMEMBER SUBSCRIPTIONS: \$2.00 per annum.

ADVERTISEMENTS: \$5.00 per eighth page per issue. \$20.00 per insert per issue. (This cost is one cent cheaper per piece for mailing tournament circulars, etc., than postage costs alone.) Classified advertisements: 5¢ per word per issue on any subject.

The opinions expressed in the editorials and by columnists are those of Scacchic Voice's Editors or those of individual columnists. They do not necessarily constitute an official policy of the CCCA or any of its affiliates. All unsigned articles were written by the Editors.

Submission of material (including photographs) by readers is encouraged and becomes the property of the Editors. Each CCCA affiliate is responsible for sending its own news material to the Editors. To be assured of consideration for publication, news and tournament data should be received at the above address thirty days preceding the month of issuance. Other material (including columns) should be received at the above address sixty days preceding the month of issuance. Material should be typewritten, following the style used in this magazine.

Comments from readers on any feature of this magazine will be appreciated and will be answered. Letters for publication in the "Letters to the Editors" column should be marked "For Publication." Correspondence to the Editors should be sent to the above address; that to any other member of the staff, to that member, in care of the Editors.

Material published in this magazine may be used by other publications if credit is given to Scacchic Voice (including its Editors and address) and if the Editors are sent a copy of the issue containing the material.

CCCA OFFICERS

CHAIRMAN
P. O. Box 208, Walnut Creek 94547
SECRETARY
c/o P. O. Box 1622, Oakland 94604
TREASURER
5315 MacDonald Avenue, El Cerrito 94530
LEAGUE DIRECTOR
231 Twelfth Street, Richmond 94801
RATING ADMINISTRATOR
23716 Lynn Street, Hayward 94541
EDITORS
c/o P. O. Box 1622, Oakland 94604
c/o P. O. Box 1622, Oakland 94604

JEROME W. LONG
-
MARTIN E. MORRISON
582-1973
LEONARD F. TROTTER
233-1595
JACK W. DENNIS
233-1401
EVERETT MC NALLY
783-8763
MARTIN E. MORRISON
582-1973
ELWIN C. MEYERS

PUBLICITY DIRECTORS
27858 Tampa Avenue, Hayward 94544

RICHARD R. SHORMAN
782-5029
ELLIS PLASTRIK
228-1796

811 Brown Street, Martinez 94553

Assistant Publicity Directors: Alameda County--(Alameda Area) Stephen Nelson, (Livermore Area) Wes Nelson, (Newark Area) Hans Poschmann, (Oakland Area) Richard Lee; Contra Costa County--Saleh Mujahed; Marin County--to be determined; Monterey County--William Kennedy; Tulare County--Chris A. Fotias.

Members should feel free to contact their officers regarding any aspect of CCCA business. They will be happy to bear and to work on your ideas.

CCCA AFFILIATES
(18)

ALAMEDA CHESS CLUB
Mon., 7:00-10:30 p.m.
McKinley Park Rec. Cen.
Walnut St. and Buena Vista
Ave.
Alameda

BERKELEY YMCA CHESS CLUB
Wed., 7:00 p.m.
Palm Rm.
Berkeley Central YMCA
2001 Allston Wy.
Berkeley

COLLEGE OF THE SEQUOIAS
CHESS CLUB
Tues., 12:00 m.-1:00 p.m.
Rm. 338
College of the Sequoias
Visalia

CONCORD CHESS CLUB
Fri., 7:00-11:30 p.m.
Concord Rec. Cen.
2974 Salvio St.
Concord

FREMONT CHESS CLUB
Thurs., 7:00-10:00 p.m.
Centerville Jr. High
School
37720 Fremont Blvd.
Fremont

HAYWARD CHESS CLUB
Mon. and Fri., 8:00-12:00 p.m.
Hayward Arts and Sciences Cen.
2058 "D" St.
Hayward

LIVERMORE CHESS CLUB
1st and 3rd Fri., 7:30-
11:30 p.m.
Old Library
Carnegie Bldg.
Fourth and "J" Sts.
Livermore

MARTINEZ CHESS CLUB
Mon., 7:30 p.m.
1111 Ferry St.
Martinez

MONTEREY PENINSULA CHESS CLUB*
Thurs. evenings
Casa Alvarado Chess Cen.
494 Alvarado St.
Monterey

NEWARK CHESS CLUB
Tues., 7:00-10:30 p.m.
Newark Community Cen.
35501 Cedar Blvd.
Newark

OAKLAND CHESS CLUB
Fri., 7:00-11:30 p.m.
Multipurpose Rm.
Lincoln Elem. School
225 Eleventh St.
Oakland

ORINDA CHESS CLUB
Thurs., 7:30 p.m.
Orinda Comm. Church
10 Irwin Wy.
Orinda Village
Orinda

PIEDMONT HILLS HIGH SCHOOL
CHESS CLUB**
Mon.-Fri., 2:30-4:00 p.m.
Rm. E-14
Piedmont Hills High School
1377 Piedmont Road
San Jose

RICHMOND CHESS CLUB
Fri., 7:00 p.m., except
of the 1st Thurs. instead
of the 1st Fri.
Our Lady of Mercy Church
301 W. Richmond Ave.
Point Richmond

SAN QUENTIN CHESS CLUB
Only for inmates of the
Calif. State Prison,
San Quentin

UC DAVIS CHESS CLUB**
Mon., 7:00-11:00 p.m.
Games Room
Memorial Union
University of Calif.
Davis

VISALIA CHESS CLUB
Fri., 7:30 p.m.
Rec. Park Bldg.
345 No. Jacob St.
Visalia

WALNUT CREEK CHESS CLUB
Tues., 7:00 p.m.
Walnut Creek Park and Rec.
Bldg.
Civic Dr. and No. Broadway
Walnut Creek

*Temporarily suspended from active membership, "since it is in the process of re-organizing its financial and constitutional structure and is therefore unable to pay its assessments for a time."

**To be formally adopted as affiliates at the next CCCA meeting.

----- (paid advertisement) -----

Sample books:
Negyesi-Hegyí, Combination in Chess; Keene, Flank Openings; Murray, A History of Chess; St. Petersburg 1914; Chess Informant V. V

Chess Clocks - Sets - Books
Please write for free catalog

K. Rattmann
2 Hamburg 74
Postfach 365
Germany



Many other books and magazines available. World-wide connexions. Please attach either personal check or international money order. Post-free.



NEWS

(Continued From p. 2.)

Visalia Championship, Amateur Open

By CHRIS A. FOTIAS

CCCA Assistant Publicity Director, Tulare County

In October, nineteen players began to compete in the Adult and Teen-age Division of the Visalia Chess Club Championship. Michael Mills, of Porterville, took the Championship with a fine 17-1 showing, a point ahead of CCCA Assistant Publicity Director of the county, Chris A. Fotias (16-2). C. Dawdy took third, with 15½-2½. Cody Crawford won the nine-man Sub-teen Division with an impressive 15-1 score. Leslie Rainwater's 12-4 took second, and Keely Toomey won third place with a 9½-6½ result.

The Fifth Pre-Easter Visalia Amateur Open will be held this year on 28-30 March at the College of the Sequoias Student Union, Visalia. The tournament is limited to players under 1800 USCF rating and unrated players. The entry fee is \$5 for those under 21, \$10 for those over 21. Cash, trophies, and other prizes will be offered. The first round of the six-round Swiss System tournament will begin promptly at 8:30 p.m. on Friday, 28 March. Entries may be sent to Chris A. Fotias, College of the Sequoias, Visalia, CA 93277.

*

Saguisag Wins Third Annual Concord Championships

By RICHARD R. SHORMAN

CCCA Publicity Director

At the plush Willow Pass Community Center in Concord, René Saguisag, of San Francisco took top honors with a perfect 5-0 score in the Third Annual Concord Open Chess Championships. The tournament, directed free of charge by CCCA Chairman Jerome M. Long, also saw John Bulash, of Mountain View win the Class A prize of \$35 (4-1). Following Mr. Saguisag in Class B were James B. Shearer, of Livermore, and Lupe Lopez, of Hayward, both of whom scored 3½-1½. Sharing honors in Class C of the fully USCF open tournament were Myron A. Johnson, of Oakland, Manuel Rivera, of Pittsburg, and R. Douglas Turney, of Albany, all with 3-2 scores. Mark Ettlin, of Concord, won the Junior Class, 3½-2½, in a round robin. (15-16 February.)

*

Suhobeck Takes Monterey Championship

By WILLIAM KENNEDY

CCCA Assistant Publicity Director, Monterey County

The Monterey County Chess Champion was crowned in a five-round Swiss System tournament held at the Casa Alvarado Chess Center on 7-8 December. Alex Suhobeck, of Monterey, won with 5-0; the 3½-1½ scores of Frank Sutor, of Pacific Grove, and Gene Newmann, of Monterey, tied for second. Theodore Yudakufski, California State Director, USCF, directed.

---(paid advertisement)---

*Play-by-Play Records of Two of the World's
Most Important Tournaments*

SECOND PIATIGORSKY CUP \$9.95

International Grandmaster Chess Tournament held in Santa Monica, California, July 1966. Each game annotated by both players: Donner, Fischer, Iskov, Larson, Najdorf, Petrosian, Portisch, Reshevsky, Spassky, Unzicker. Edited by Isaac Kashdan.

For the first time, each player explains his thoughts and motives behind each move. The reader gets a remarkable insight into the clash between two keen, brilliant minds. Robert Britts—Copley News Service.

FIRST PIATIGORSKY CUP \$6.95

International Grandmaster Chess Tournament held in Los Angeles, California, July 1963. Each game annotated by a player: Petrosian, Keres, Najdorf, Panno, Olafson, Gligoric, Benko, Reshevsky. Other annotations by Reshevsky. Edited by Isaac Kashdan.

The tournament itself was of world consequence, the greatest chess event held in this country during the past forty years—Lt. Col. Edmund B. Edmondson.

TO: The Ward Ritchie Press - 3044 Riverside Dr., Los Angeles, Calif. 90039

Please send me ___ copies of FIRST PIATIGORSKY CUP at \$6.95. Send me ___ copies of SECOND PIATIGORSKY CUP at \$9.95. My check or money order is enclosed. If not completely satisfied I understand I can return the book(s) within 30 days for a full refund.

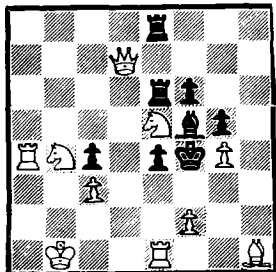
Name _____

Address _____ City _____ State _____

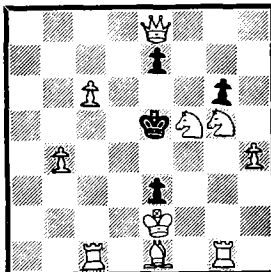
MATING MAZE

By RICHARD LEE

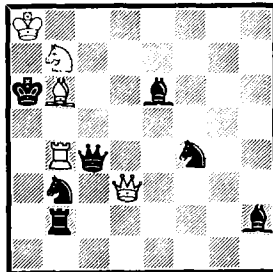
Scacchic Voice Problems Columnist
(CCCA Assistant Publicity Director,
Alameda County, Oakland Area)



No. 48
White mates in two.



No. 49
White mates in two.



No. 50
White mates in two.

David P. Lynn, of Saratoga, Scacchic Voice's Peninsula News Reporter, has sent in the correct solutions to last issue's problems, for which he will receive a small prize. Any other reader who, not for profit, but just for the fun of it wishes to send in the solutions to this issue's problems should feel free to do so, and in the interest of promoting this engrossing and pleasurable chess pastime, I shall send a similar prize, a token of victory, so to speak, to any reader who sends in the correct solutions to the three problems. Happy solving! See page three of this issue to learn how to address solutions, and comments, to Mr. Lee.--EDS.7

Solutions to last issue's problems: no. 45--P-B3; no. 46--B-KR6; no. 47--B-K5.

BUSINESS PROCEEDINGS OF THE CCCA

By MARTIN E. MORRISON
CCCA Secretary

Call for Executive Board Meeting

As per the call of Chairman Jerome M. Long under Article VI, Section iv, of the Bylaws, a meeting of the Executive Board of the Central California Chess Association will be held at 7:30 p.m. on Friday, 7 February 1969, at Lincoln Elementary School, 225 Eleventh Street, Oakland (the Oakland Chess Club's quarters), for the purpose of considering the proposed tournament referred to it, the CCCA's sponsorship of a chess exhibition at the Sun Valley Shopping Center, and any other business that may arise.

/s/ Martin E. Morrison, CCCA Secretary

Minutes of Executive Board Meeting

A meeting of the Executive Board of the CCCA was held on Friday, 7 February 1969, in the Faculty Dining Room of Lincoln Elementary School, 225 Eleventh Street, Oakland (the Oakland Chess Club's quarters). The meeting was called to order at 8:03 p.m. by the Secretary, Martin E. Morrison, the Chairman, Jerome M. Long, being absent. It was adopted by general consent that Mr. Morrison serve as chairman pro tempore.

The total attendance for the meeting was as follows--present: Martin E. Morrison, Secretary and Editor; Leonard F. Frottier, Treasurer; Jack W. Dennis, League Director; Elwin C. Meyers, Editor; Ellis Plastrik, Publicity Director (5); absent: Jerome M. Long, Chairman; Everett McNally, Rating Administrator; Richard R. Shorman, Publicity Director (3). Nonmember present by general consent: Robert A. Alviljar, member, Martinez Chess Club, and Executive Director, Martinez Boys' Club.

It was moved by Mr. Plastrik THAT THE CCCA SET UP A COMMITTEE FOR THE PURPOSE OF IMPLEMENTING A PUBLICITY CHESS EXHIBITION AT THE SUN VALLEY SHOPPING CENTER. It was moved by Mr. Morrison and adopted by general consent that the Board recess for ten minutes to ballot. The chair declared the meeting recessed for ten minutes.

The chair again called the meeting to order at 9:48 p.m. and announced the results of the balloting:

Number of votes cast5
Necessary for adoption3
Aye4
Nay1

The chair declared the motion adopted.

It was moved by Mr. Plastrik and adopted unanimously THAT THE COMMITTEE CONSIST OF MESSRS. PLASTRIK (CHAIRMAN), ALVILLAR, DUNCAN D. CAMPBELL, LONG, MORRISON, SALEH MUJAHED, AND SHOIHAN, AND THAT THE COMMITTEE REPORT ON ITS PROGRESS AT THE CCCA'S REGULAR MEETING IN APRIL.

It was moved by Mr. Plastrik and adopted by general consent THAT NO CCCA FUNDS BE SPENT FOR THE EXHIBITION.

It was moved by Mr. Meyers and adopted by general consent THAT THE DATES OF 19-20 JULY BE SET FOR THE CCCA TOURNAMENT WHICH WAS REFERRED TO THE BOARD, THE DETAILS TO BE WORKED OUT AT THE CCCA'S REGULAR MEETING IN APRIL.

It was moved by Mr. Plastrik and adopted by general consent THAT MR. ROBERT A. ALVILLAR BE DESIGNATED THE CCCA'S LIAISON WITH THE BOYS' CLUBS.

It was adopted by general consent THAT THE MEETING ADJOURN SINE DIE. The chair declared the meeting adjourned sine die at 10:31 p.m.

COMPUTERIZED CHESS
By GEORGE N. VASSILAKIS
Reprinted from Software Age

The following article was brought to our attention by Paul Westerline, Secretary-Treasurer, Concord Chess Club, a computer programmer himself. The full bibliographic reference is: Software Age, (January 1969), 37. We thank Mr. Westerline and encourage other readers to contribute such material.--END.7

On 20 November 1966, a computer at the Institute of Theoretical and Experimental Physics in Moscow made the historic move P-K4, and a computer at Stanford University, California responded with P-K4. On 10 March 1967, the Russian computer made its nineteenth move--QxR mate! Several other games were played simultaneously, and the USSR computer finally won the tournament.

Does this mean the Russian computers are smarter than the American computers? Of course not. In fact, we can safely say that the IQ of each computer was zero. Why, then, did a slow unsophisticated computer play better chess than its opponent, which was probably the world's fastest and most sophisticated computer at that time? The answer, of course, is the man behind the computer. Each machine was programmed by leading mathematicians, and the results merely indicate that the Russian programmers had written a better program.

The motive for the contest was more scientific than sporting. Programming chess is not for the average programmer, and the leading mathematicians can do very little with today's computer technology. Chess falls into the category of problems which have exact solutions, but such solutions are beyond the capabilities of present computers. The main problem is the astronomical number of combinations of moves the computer must analyze.

Will computers ever play a good game of chess? Botvinnik believes the time will soon come when a computer will be able to play like a grandmaster. Professor M. Euwe doesn't think so. He believes computers will be rated as amateurs. A. N. Walker, an astronomer from Manchester University, England, points out that computers are not specifically designed with chess in mind, and a custom-built computer with special circuitry could increase the speed of a chess program 50-60 times.

During the past ten years, computer speeds have increased by a factor of 1000 or more, and present advances in computer technology indicate that a further increase in the order of 1000 or more might easily be obtained in the next ten years. The trend of micro-miniturization in computer technology indicates that someday we may have computers smaller than a chess clock, and a player may be able to enter his computer's computer in a chess tournament.

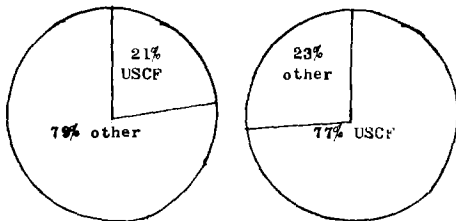
The computers' game is recorded on page 11 (no. 4).

(Continued on p. 10.)

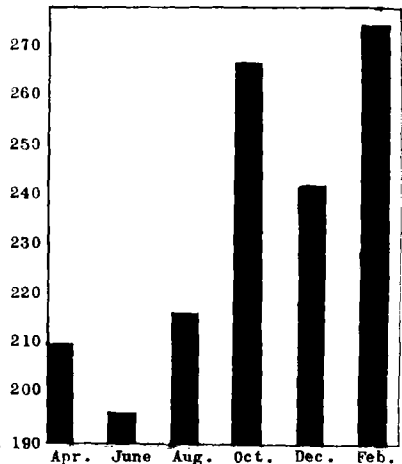
***A PICTORAL AND GRAPHIC HISTORY OF THE
CENTRAL CALIFORNIA CHESS ASSOCIATION (CCCA) AFTER ONE YEAR***



A typical scene at one of the new United States Chess Federation tournaments which CCCA affiliates are now sponsoring. Randall D. Hough plays Mark Watson at the Third Annual Concord Open Chess Championships, a fully USCF tournament since the founding of the CCCA, which by its bylaws is wholeheartedly behind USCF activities. Onlookers are George Roust, Earl Ipsen, Leonard Petty, and George Marcus (l. to r.).



A profile of the Central California tournament calendar. The first graph shows USCF vs. other types of tournaments in the year before the founding of the CCCA. The second graph shows the same during the first year of CCCA's existence. USCF tournaments have increased 56% in one year after the appearance of the CCCA, which fully supports the USCF!



The graph to the right demonstrates the increase of membership in the CCCA since its founding one year ago.

At the bottom of this and the following page is a sample of the more than twenty-four chess advertisements carried by Scacchic Voice to assist and inform our readers.

POSTAL CHESS

Tournaments by mail as conducted by
CHESS REVIEW

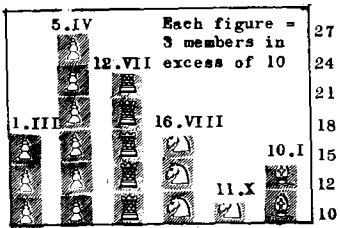


THIRD ANNUAL CONCORD
OPEN CHESS CHAMPIONSHIPS



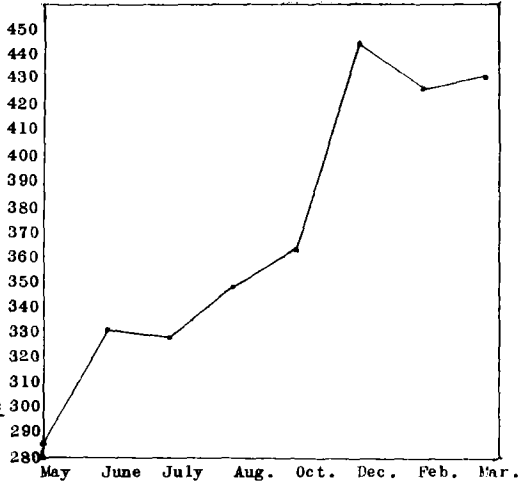


A scene at a meeting of the CCCA. Meetings are held quarterly, at which any member of a CCCA-affiliated club may debate and vote upon matters of importance to the development of local, state, and national chess. The photograph shows the 3 January annual meeting, which sixteen chess enthusiasts attended. In the chair is Jerome M. Long (r.), CCCA Chairman; to his left, CCCA Secretary and Editor Martin E. Morrison; and to his right CCCA Editor Elwin C. Meyers. —Photographs by Richard R. Shorman, CCCA Publicity Director.



The above pictograph shows attendance at CCCA meetings. At no time have fewer than ten been present at a meeting, although in some cases the distance to the meeting has been great. At the six meetings no fewer than 115 appearances have been made!

The graph to the right shows *Scacchic Voice* subscriptions over the year of CCCA's existence. CCCA's organ is now recognized as among the top five amateur chess publications in the entire United States!



HAYWARD CHESS CLUB CHESS FESTIVAL

CHESS DIGEST
MAGAZINE
1969

OKLAND CHESS CLUB'S
SECOND ANNUAL
FOUR-MAN SECTIONAL
CHESS TOURNAMENT



Connoisseurs Curiosity Shop

COMPUTERIZED CHESS

(Continued from p. 7.)

The prices of computers are also going down, and we may see the day when a school like MIT or Stanford will be able to dedicate a high speed computer to postal chess. Think of how much analysis such a computer could perform in the 72 hours that a postal chess player is allowed from the time he receives his opponent's move! . . . Further analysis could be performed while waiting for the opponent to answer.

LETTERS TO THE EDITORS

EDITORS:

I once published in my own paper, Chess Herald, how I felt about CFNC [the Chess Friends of Northern California] and why I left. . . . It caused quite a lot of controversy. Of course, this was quite a few years back. . . . As you know. . . , I sympathize greatly with Mr. [Jerome M.] Long [now Chairman of the CCCA, formerly Tournament Director of CFNC], and I read his letter when you first sent me that copy of En Passant [in which Mr. Long's resignation from the Board of Directors of CFNC was published]. . . .

I was Secretary-Treasurer of CFNC during 1955-56. Also I was editor of their periodical Chess in Action. Charles McKinley [sic] was my forerunner, and, I think, he took over when I resigned. I don't really like to bring up bad memories. As a result of the tournament I wrote of in my column [August-September Scacchic Voice], I later resigned. It was not because of my game with McLeod, but because of other things concerning the same tournament. I had changed Chess in Action from a quarterly to a monthly. I felt readers wanted things more current. Shortly after the tournament, I asked for a copy of the results, so that I could publish them in Chess in Action while the news was still new. I was refused the results because of the many protests over adjudications and . . . [because] positions of standings might be changed. I insisted on the results the way they were and [on] reporting also that many games were protested, . . . [that] the final standing[s] might . . . change, and that I'd comment and report about that too. I was refused. I had stated that even the protests of the adjudicated games [were] . . . news, and it would be interesting to CFNC members--that it showed something had to be done. I was still flatly refused. I pleaded for two months and then, after no results, decided to resign. The minute I resigned, Tom Tripodes, President of CFNC then (and a bitter opposite of me on my views at the time), came over to my house so fast it was pitiful. He asked for the records and all equipment I had. I didn't hesitate and gave him everything that belonged to CFNC. I wasn't even given a thank you from them, and I was never again mentioned in CFNC circles unless it was something bad they could say. . . .

I have no regrets, but I don't like to open old wounds. CFNC at that time was pretty well run by George Koltanowski, and nobody dared differ with him. The Bay Area Chess League and the California [State] Chess Federation were bad words to him, but I questioned him! Chess is chess, and chess organizations are chess organizations, and they should cooperate with each other. . . .

At Precita Valley [Chess Club] I stuck with CFNC, entering their league. We won the first time we tried and got a nice trophy. Next year we won again, but they failed to recognize us on phony reasons. This caused me to enter the BACL . . . and affiliate us with the California [State] Chess Federation. . . .

CFNC was prejudiced in my time. I was also Assistant Tournament Director for BACL for two years and enjoyed it--Henry Gross helped me out tremendously. It was the only office I filled that I can remember that nobody complained. . . .

/s/ Jim [James B. Reynolds]

CCCA LEAGUE INTERIM REPORT

By JACK W. DENNIS
CCCA League Director

After five rounds of play, with the league season to end in April, these are the standings last to be published before the announcement of the final winners:

Eastern Division			Western Division		
Rank	Team	Score	Rank	Team	Score
1	Livermore Alphas	5 - 0	1	Hayward	4 1/2 - 1 1/2
2	Concord B	3 1/2 - 1 1/2	2	Oakland Stingers	3 1/2 - 1 1/2
3	Orinda	3 - 2	3	San Quentin	3 - 1
4	Livermore Omegas	2 1/2 - 2 1/2	4	Alameda	1 1/2 - 3 1/2
5	Concord A	2 1/2 - 2 1/2	5	Oakland Oaks	1 1/2 - 2 1/2
6	Martinez A	1 1/2 - 3 1/2	6	Richmond	1 - 3
7	Martinez B	1 - 4	7	Newark	0 - 4
8	Walnut Creek	1 - 4			

Forfeits and team game results are used to break ties in the standings. A bye is counted as a win. In the case of Stingers vs. Alameda, the bye put Alameda in fourth place.

GAMES COLUMN
 by RICHARD R. SHORMAN
 Scacchic Voice Games Columnist
 (CCCA Publicity Director)

David Glanville, our former games columnist, has had to relinquish his column because of the press of his schedule. In his place we are happy to have been able to retain Mr. Shorman, who is amply qualified for the position. Aside from being the chess columnist for three Southern Alameda County newspapers, Mr. Shorman, a USCF-CCCA Expert, actively participates in local and regional chess organization, being the President of the Hayward Chess Club and CCCA's Publicity Director. Mr. Shorman welcomes the submission of games by Scacchic Voice readers. See page three of this issue to learn how to address games, and comments, to him. ---EDS/

Game No. 1. Charles A. Maddigan, a young Class B player from Oakland, scored an upset victory against Roy Hoppe (2089) and then went on to defeat Class A player James Fosaaen in a later round. The youngster shows promise . . .

Played: New Year Open (Walnut Creek)

Date: 5 January 1969

Opening: Vienna Game

White: James Fosaaen, Pleasant Hill

Black: Charles A. Maddigan, Oakland

1 P-K4	P-K4	9 NxPch	K-Q1	17 K-Q1	R-K1	25 BxR	PxP
2 N-QB3	N-KR3	10 NxR	P-N3	18 BxP	P-KR4	26 K-B2	Q-Q7ch
3 B-B4	NxP	11 Q-B3	B-QN2	19 BxN	QxB	27 K-N3	B-Q4ch
4 Q-R5	N-Q3	12 P-Q3	B-N2	20 Q-N3	R-K4	28 K-R3	B-Q3ch
5 B-N3	N-B3	13 Q-N3	P-E5	21 Q-N5ch	K-B2	29 QxBch	KxQ
6 N-N5	P-KN3	14 Q-N4	BxN	22 E-F7	F-B5	30 QR-QN1	Q-Q6ch
7 Q-B3	P-B4	15 N-K2	N-Q5	23 QxNP	Q-N5	31 resigns	
8 Q-Q5	Q-K2	16 NxN	PxNch	24 P-QB3	PxP		

Game No. 2. A well prosecuted game.

Played: Oakland Chess Club's Third Annual San Francisco Bay Area Amateur Open Chess Championship

Date: 14 December 1968

Opening: Queen's Gambit Declined

White: David J. Forthoffer, Berkeley

Black: Clement E. Falbo, Rohnert Park

1 P-Q4	P-Q4	7 N-R3	B-N5	13 PxR	BxN	19 Q-R1	PxP
2 P-QB4	P-K3	8 P-K3	Q-R4	14 B-R4	P-KN3	20 PxP	Q-N3
3 PxP	PxP	9 B-Q3	O-O	15 P-B3	N-Q3	21 R-K1	QR-B1
4 N-QB3	N-KB3	10 O-O	R-K1	16 P-K4	P-QB4	22 QxN	R-K3
5 B-N5	P-B3	11 N-K5	BxN	17 P-K5	N-B4	23 QR-N1	resigns
6 Q-R2	QN-Q2	12 NxN	N-K5	18 B-B6	N-K6		

Game No. 3. Counter-attack constitutes the only real compensation for material loss in chess. Here White trades a pawn in the opening for an equivalent initiative. Having accepted the sacrifice, Black defends well for a time, but a couple of "minor inaccuracies" on moves 9 and 10 allow fresh sacrifices that increase White's initiative to the danger point. Even so, Black might have drawn the game with perfect play thereafter, but as is so often the case with precarious defense, one mere slip breaks his back and the attacker wins again.

Played: Mt. Eden vs. Sunset High School League Match, Board 1, at Hayward

Date: 9 January 1969

Opening: Bishop's Opening (by transposition)

White: Robert Martinez, Hayward

Black: Lupe Lopez, Hayward

1 P-K4	P-K4	8 Q-R4	P-J3	15 BxQ	BxR	22 K-Q1	PxP
2 N-KB3	N-KB3	9 O-O-O	O-O	16 N-K4	E-D4	23 Q-R3ch	K-N3
3 P-Q4	PxP	10 N-K1	P-KR3	17 N/4-N5	P-K5	24 QxP	R-Q1ch
4 B-QB4	NxP	11 BxRP	KxP	18 NxN	PxN	25 B-Q3ch	K-B3
5 QxP	N-KR3	12 QxP	N-B2	19 QxRch	KxN	26 P-KR4	B-B5
6 B-K5	B-K2	13 R-Q5	N-K4	20 QxPch	K-R3	27 Q-N6ch	resigns
7 N-B3	N-B3	14 KRxN	PxR	21 QxP	B-N4ch		

Game No. 4. Details on p. supra.

Opening: King Knight's Opening

White: USSR Computer

Black: USA Computer

1 P-K4	P-K4	6 PxN	BxP	11 Q-Q5	N-K3	16 RxP	P-B3
2 N-KB3	N-QB3	7 P-KB4	BxNch	12 P-B5	N-N4	17 Q-Q6	BxP
3 N-B3	E-D4	8 PxR	N-B3	13 P-QB4	P-KR3	18 R-N8ch	R-B1
4 NxP	NxN	9 P-K5	N-K5	14 PxN	PxNP	19 QxR	mate
5 P-Q4	R-B3	10 Q-Q3	N-B4	15 BxP	R-B1		

A MINIATURE MASTERPIECE FROM THE 1968 AMERICAN OPEN

By JUDE F. ACERS
San Francisco

Mr. Acers, a USCF Master and quondam Louisiana State Champion, is a well-known local chess figure. Participating in the Mechanics' Institute Chess Club's Arthur E. Stamer Memorial Tournament (4-7 July 1968), he placed second in a field of ninety. In the 19-21 July 1968 Ernest Shields Open (Bakersfield), he placed sixth out of seventy-seven. His final tournament reported is the Southern California Open (Santa Monica, 2-4 August 1968), in which he was seventh of a field of 165. Mr. Acers has promised to send Scacchic Voice annotated games from time to time. The following, which he has "annotated in depth" and which he titles "An Outstanding and Brilliant Miniature Masterpiece from the 1968 American Open," is presented here for the first time; not one word has been omitted.—EDS. 7

Played: 1968 American Open, Santa Monica

Date: 1 December 1968, final round

Rate: Fifty moves per two hours

Opening: Slav Defense

White: Vladimir Pafnutieff, San Francisco

Black: Bruce Antman, Los Angeles

1 P-Q4	P-Q4	9 P-KN4!! (h)	NxP	17 0-0!! (m)	PxR/Q
2 P-QB4	P-QB3 (a)	10 B-N2! (i)	NxN	18 RxB (n)	B-N5!
3 N-QB3	N-B3	11 PxN (j)	P-N5	19 Q-Q4!!!	Q-Q2 (o)
4 N-B3 (b)	PxP	12 R-Q1! (k)	Q-B2	20 PxP!	QxQ
5 P-QR4 (c)	B-KN5 (d)	13 N-N5	PxN	21 RxB	B-Q2 (p)
6 N-K5	B-R4	14 BxR	P-B6	22 P-R7	N-B3
7 B-KN5 (e)	Q-R4?! (f)	15 Q-Q5! (l)	P-QR3	23 RxB	NxRP
8 Q-Q2! (g)	P-QN4	16 RPxP!	P-B7	24 RxB	resigns

(a): In my opinion, this entire system is suitable only when the opponent is certain to seek an active middle game, avoiding 3 PxP and a stagnant pawn structure. Pafnutieff rides the wind. There is no draw danger for Black.

(b): Again 4 PxP forces ...PxP in reply, as 4...NxP; 5 P-K4, NxN; 6 PxN, P-KN3; 7 B-QB4, B-KN5; 8 B-K3, and Black has a Gruenfeld irregular defense, with P-QB3 meshed messily.

(c): 5 P-K4 (Geller), and White loses a clear pawn after 5...P-QN4; 6 P-K5, N-Q4; 7 P-QR4, P-K3; 8 PxP, NxN; 9 PxN, PxP, and in many games during the early 50's White's compensation was proved more psychological than truly valid. A pawn is, after all, an enormous amount of material to lose, and the burden of proof is on the giver.

(d): Unusual, but theoretical, Alekhine's idea to retard e4. Addison employs 5...N-R3 here, whereas, as a matter of taste, I use 5...B-B4 a great deal. Antman handles the whole variation that follows in a most thematic fashion, and it is more the case of a dynamic junior talent's variation gone wrong than any lack of alertness that accounts for the White initiative soon obtained.

(e): The first move of the game. Well charted is the alternative 7 P-KN3, P-K3; 8 B-N2, B-QN5; 9 NxP/4, 0-0; 10 P-R5, N-Q4; 11 B-Q2, with White best (Taimanov-Petrosian, Russian Championship, 1959), but surely Black may improve with 9...P-QR4, with a good, non-symmetrical fighting game. White's innovation here is important theoretically.

(f): Consistent in a bad plan. The alternatives promise little: 7...P-K3; 8 P-KN4, or 7...QN-Q2 (best); 8 NxP/4, and Black's minor pieces are not well placed to play either e5 or c5. Antman avoids machine play here.

(g): Beginning a very powerful combination which anticipates that Black will attempt to force the middle game by advancing his four-pawns-versus-two-queen-side majority upon White like a meat cleaver. Black has but little choice, as otherwise Q-R4 is a pointless manoeuvre. Black accelerates White's problems, as well as his attack, by entering the main line.

(h): The point. By sacrificing a second pawn White brings terrific pressure to c6 in a very clever manner. 9...B-N3; 10 B-N2 is won for White, as, of course, is 9...BxP, losing a piece, so . . .

(i): In a post mortem with Pafnutieff and the annotator two months later William G. Addison discovered an interesting possibility here: 10 NxN, BxN; 11 NxP, then either 11...QxQch; 12 KxQ, N-R3; 13 B-N2, K-Q2; 14 N-R3, with pressure (Black may still defend with 14...P-K4; 15 NxP, P-B3, threatening both B-K3 and PxP. He may also interpose B-N5ch with effect at several points in the defense, and so, I believe, can hold the position) or 11...Q-N3; 12 Q-B4, PxN; 13 QxR, N-B3; 14 B-N2, and White is for choice colloquial for "has the advantage".—EDS. 7.

White may also play simply 12 B-N2 here. 11...Q-Q1 as well is answered as just previous.

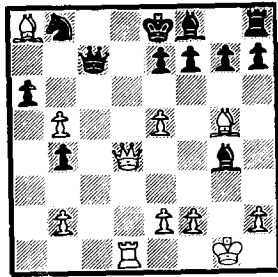
(j): Only a marvelous combinative instinct could determine the real problems Black has in defending this position. Black has a lost game, because he is unable to prevent the collapse of his queen-side pawn structure and defend d7-d8 as well.

(k): The beginning of the end and really the only obvious crusher in this beautiful game. If now 12...PxN or Q-N3, White mates in two. (BxPch, and gee, it's all over, folks!)

(l): 15 PxP is pointless, though possible. The text is strong, not because of the obvious threat of QxNPch, but really because of a lovely hidden point (for our hidden-point-finder readers). Somewhere we must mention that naturally ...P-K3 leads to mate in two by White.

(m): White sacrifices an entire rook, when 17...R-QB1 would also suffice. A romantic in the second half of the twentieth century? Olé! After 17 R-QB1, P-K3; 18 P-N6, QxP; 19 Q-N3 wins, or perhaps 17...P-K3; 18 RxP! is more convincing? If, instead, Black defends with 17...P-KB3, 18 P-N6, QxP; 19 RxP with a smash. Ineffective is B-B6ch for White at any point in the variations considered, and this should be analyzed to the reader's satisfaction.

(n): Threatening to terminate everything with 19 P-N6, and if 19...Q-B1, 20 B-N7, or 19...Q-Q2, 20 B-B6. White's combination appears absolutely sound, as investigation by no less than five masters, some extremely sceptical at the outset, proves infra.



(o): Black has an extremely interesting and severe defensive task in this lost position that is not helped with despair. The text loses flatly. Black has several defensive resources which are speculative, as defense here must be, but more importantly force White to select from a large number of attacking alternatives, many losing for White. Indeed, the demonstrated win was tedious to uncover in post mortem analysis much later. Black's best is 19...P-KR3!; and White must produce the analytical goods now (at a time control that runs like a deer)! Even cursory examination discloses seven possibilities for White: (I) 20 QxB, PxB; 21 P-N6, Q-B4 (not 21...Q-B7; 22 Q-Q4, Q-B1; 23 B-N7, Q-Q2; 24 B-B6, and mate in six); 22 QxNP, QxNP; 23 Q-Q2, R-R3! and wins, or 21 QxNP, P-K3

and 22 R-QB1, B-B4; 23 QxNP (23 B-B6ch!, NxB; 24 RxB, Q-K2; 25 QxNP, QxR; 26 QxRch, K-Q2; 27 PxNch, QxP leads to a fascinating, very difficult ending, with White, I think, slightly better), R-R4! (if 23...R-KB1, 24 P-K3, Q-R2; 25 B-B6ch, NxB; 26 PxN, RxB; 27 P-B7. In other variations the White king rook pawn journeys to h8.), and White's attack is insufficient. (II) 20 P-N6, Q-Q2, and wins. (III) 20 PxP, PxB (if ...NxP, 21 B-B6ch); 21 QxB, P-K3; 22 QxNP, B-QB4; 23 QxNP, R-R4, and Black actually wins. (IV) 20 R-QB1 (the most natural move), Q-Q2; 21 Q-N6, QxNP!; 22 Q-B7, PxB and crushes White: 23 R-Q1, B-Q2; 24 B-B6, QxB; 25 QxNch, Q-R1, and lives. (V) 20 P-K6, PxR wins. (VI) 20 B-KB4!; P-KN4 (hair-raising, isn't it?); 21 P-K6 (21 B-N3, B-K3 kills), Q-Q3!; and now: (VIa) 22 PxPch, KxP (22...K-Q1; 23 B-Q5!, R-R2; 24 QxB bombs); 23 Q-QB4ch, B-K3; 24 B-Q5, PxB, and again defense triumphs after death! (VIb) 22 PxP!; (found after days of analysis and sleepless nights; there is no defense to 23 P-R7 and the alternate threat 23 B-N3!, QxQ; 24 RxQ, BxKP; 25 BxN, B-Q2; 26 RxB! /Acers?). (VII) 20 B-KB4 (a suggestion of the New York master Steve Brandywine), and on 20...P-KN4!, there are main lines: (VIIa) 21 P-K6, PxR; 22 QxR (or interposing 22 PxPch, KxP; 23 QxR, RxB!), RxB, and White has failed to pursue his initiative properly. (VIIb) 21 B-N3, B-K3; 22 PxP, B-N2; 23 P-R7, N-Q2; 24 B-N2, 0-0; 25 P-R8/Q, RxQ; 26 BxR, BxP. In this variation Black is mercifully given respite by temporary removal of the threat of QxB by White. It may be barely adequate.

The above is only a skeleton summary of the analysis that has been done on this fascinating combination. The question remains, the haunting wonder, just what variation would White have entered with 19...P-KR3? We shall never know, but I hope that skeptics will find that the position is not effortlessly defined for White and that the defender could indeed have presented further problems rather than enter the text line, which is simply a matter of a queening combination for win of material.

(p): Best after 21...NxP; 22 B-B6ch, B-Q2 is 23 BxBch! (IxB is ineffective, believe it or not), K-Q1; 24 B-N5ch, winning everything. A well played game by White. His opponent strove to create a dynamic game with a poor opening conception. We shall hear more of Bruce Antman. This game, coupled with Fafnutieff's brilliant effort against grandmaster Arthur B. Bisguier a decade past, serves notice that chess genius is everywhere--under trees, in the meadows, in every house, and threatening, threatening, threatening.

USCF-CCCA RATINGS
 By EVERETT MC NALLY
 Rating Administrator, CCCA

The purpose of USCF-CCCA Ratings, to be published bimonthly, is to give every CCCA member a current rating for participation in USCF and CCCA tournaments and CCCA League play. In this system, a CCCA member having an official USCF rating will be given that rating (no mark after the rating indicates an established rating; * indicates a provisional rating based on ten to eighteen games [such ratings are less reliable than established ratings/; # indicates a rating based on four to nine games [such ratings are highly unreliable/], which will then be adjusted on the basis of rated play between him and other CCCA members (indicated by \$); however, such an adjusted rating will be reconciled to the official USCF rating of the member whenever a new rating is listed for him in the quarterly rating lists published in Chess Life, the official organ of the USCF (indicated by the original sigla described supra). A CCCA member not having an official USCF rating will temporarily be given his most current CFNC rating (indicated by %), or, if he has not CFNC rating, his most current club rating (indicated by &), or, if he has neither, the Rating Administrator of the CCCA may give him a rating (indicated by /). Once a member having such a rating plays a rated game with another CCCA member, his rating will be adjusted (indicated by \$), and that rating will serve as the basis of further adjustment, unless he obtains an official USCF rating, in which case his rating will be reconciled and adjusted as explained supra. All ratings are adjusted using the USCF formula.

From the above it will be seen that official USCF ratings are the backbone of this rating system, which is therefore called the USCF-CCCA Rating System. It is hoped that in the future all CCCA members will become members of the USCF, so that such a rating system as this will be unnecessary, or so that USCF ratings will need only minor adjustment in the interim between the quarterly publication of official USCF ratings in Chess Life.

In this listing USCF ratings have been corrected to the official listing published in the January Chess Life; CFNC ratings, to the official listing published in the Winter Chess in Action. CCCA League results through January have been included, and the list of CCCA members has been updated to 5 February.

Expert ...2000-2199 Class B ...1600-1799 Class D ..1200-1399 Class E ..1199 & below
 Class A ..1800-1999 Class C ...1400-1599

Alameda C C (15)	M Monagan	1487\$	J Thayer	UNRTD D	Sehrt	UNRTD
W Atkins	UNRTD F Olivera, Sr.	1600	M Thayer	UNRTD A	Shepperson	1800/
D Collier	UNRTD R Olivera	1519\$	P Walters	UNRTD R	Shorman	2009\$
D Freeman	1633\$	R Oyler	1656\$	D Wheeler	UNRTD E	Silva 1498\$
J Gerhardt	1609\$	M Rivera, Jr.	1402	B Williams	UNRTD L	Vadnais 1624\$
A Hall	1565*	B Savage	UNRTD	<u>Hayward C C</u> (31)	R Weinberg	UNRTD
D Klinkenberg	1741\$	J Smith	UNRTD	M Albertson	UNRTD J	Wheeler 1599\$
T Kraus	UNRTD D Thompson	1570\$	R Ausmus	1773\$	<u>Livermore C C</u> (20)	
S Nelson	1721\$	L Turner	1697\$	E Bartholomew	1586* H Barnett	1318#
R Ng	1903	F Ulrich	1509\$	E Canfield	1657\$ P Berry	1669\$
G Orr	1644\$	C Vail	1660#	W Castellano	1737\$ G Boer	1919\$
L Petty	UNRTD J Weiler	1504\$	G Cohen	1563\$	T Curtis	1620\$
D Schneider	UNRTD A Wells	1584\$	J Crimmins	1399\$	R Gulliford	UNRTD
O Sobol	1711\$	P Westerline	1279\$	C Ehmann	1664\$ G Hage	1514\$
L Sutton	1500/	<u>Fremont C C</u> (20)	M Fraudy	1631\$	T Haratani	1647\$
M Weber	1892\$	B Baird	UNRTD J	Friedman	1664\$ C Hendrickson	UNRTD
<u>Berkeley YMCA C C</u>	H Barb	UNRTD R	Holloway	UNRTD C	Larson	1662
*(0)	R Fernandez	UNRTD L	Hopkins	UNRTD T	McMullen	1600/
<u>Concord C C</u> (25)	D Flack	UNRTD D	Landfried	UNRTD G	McSwiggin	1599\$
L Anderson	1473\$	D Flegal	UNRTD K	Lawless	UNRTD A	Nelson 1459\$
D Clapp	1547\$	D Fleming	UNRTD L	Lopez	1722\$ H Nelson	UNRTD
N Duke	UNRTD C	Fleores	UNRTD E	McNally	1887 W Nelson	1650/
J Eliason	1621\$	G Gramm	UNRTD S	Magness	1599\$ J Ranelletti	1500\$
J Fossaan	1899\$	W Harkners	UNRTD R	Martinez	UNRTD G	Roust 1575#
T Garnett	1539\$	T Hengle	UNRTD D	Masgalajian	1591\$ J Shearer	1649*
G Harkess	1660\$	G MacCleod	UNRTD E	Nixon	UNRTD D	Smith 1646\$
V Hiratio	1490/	E Nixon	UNRTD D	Ortega	1661\$ H Weissenborn	1565\$
J Long	1798\$	H Poschmann	1647*	L Osternig	1632\$ J Willows	1659\$
R McCollough	1800	W Qu	UNRTD E	Salo	1578\$ <u>Martinez C C</u> (22)	
M McNown	1635*	D Ryan	UNRTD F	Scarano	UNRTD B	Alaimo 1534\$

A Arguello 1650/ F Pyle 1612\$
 C Bailey 1600/ A Ramirez 1627*
 W Betts 1551\$ D Rapoport 1948
 S Brown UNRTD R Reay 1634\$
 M Canciamilla 1492\$ E Rubsamem 1548\$
 S Damasceno 1477\$ E Sago UNRTD
 G Giley, Jr. UNRTD J Salna 1834\$
 J Greenwald 1701\$ S Schmidt UNRTD
 S Kitabayashi 1671\$ S Schulman UNRTD
 R Nace 1662\$ A Sletner 1621\$
 D Petersen 1467\$ h Sloane 1516\$
 J Petersen 1486\$ E Smith 1550\$
 E Plastrik 1050/ L Soto UNRTD
 B Powell, Jr. 1660\$ K Stocksdale 1666\$
 R Quintero 1717\$ C Tabler 1764\$
 T Reed 1631\$ R Trenberth 1848
 R Swanson 1838\$ S Tressz 1904
 F Ulrich 1509\$ R Turney 1440\$
 C Vail 1660\$ F Van Sant UNRTD
 M Weitzner 1549\$ L Warden, Jr. UNRTD
 E Werner UNRTD G Weber 1817
Monterey Peninsula M Weber 1892\$
C C (0) J Whitaker UNRTD
Newark C C (9) H Wong UNRTD
 H Ebarb UNRTD T Wong UNRTD
 E Gushwa 1785\$ L Yale UNRTD
 S Gushwa 1518\$ Orinda C C (14)
 G Marshall 1550/ M Ayer 1490\$
 J Marshall UNRTD R Bentson 1488\$
 H Poschmann 1647* L Brown UNRTD
 B Seymour UNRTD D Campbell 1666\$
 R Bills 1643\$ R Fleuriot 1649\$
 A Sisneros UNRTD D Geymer 1666\$
Oakland C C (62) D Jones 1635\$
 T Anderson 1457* C Lechtaler 1499\$
 F Bauer 1500\$ M McQuarry 1650/
 E Britton 1485\$ D Schrock 1636\$
 P Cass UNRTD D Sherman 1617\$
 W Chew UNRTD D Twigg 1650\$
 R Clippson UNRTD A Westcott 1634\$
 M Crossland 1472* H Wright 1550/
 R Cuneo 1826 Piedmont Hills High
 J Dennis 1522* School C C (16)
 L Dobin UNRTD J Brittain 1390\$
 J Dorfman 1240\$ R Gordon 1830\$
 D Forthoffer 2003\$ D Hazlett 1200\$
 G French UNRTD K Kamasaki 1450\$
 J Friedman 1664\$ M Krueger 1830\$
 D Fung UNRTD R Langone UNRTD
 J Gerhardt 1609\$ M Masunaga 1480\$
 G Gerrand 1554\$ A Mock 1750\$
 D Glanville 1674\$ P Mock 1520\$
 J Hale 1778\$ G Montanaro 1000\$
 R Hammie 2000 D Morin 800\$
 B Hansen UNRTD D Myers 1500\$
 R Hansen 1866 R Ramirez 1390\$
 J Harner UNRTD S Scampini 1390\$
 G Hayes UNRTD K Terry 1670\$
 F Hibbler 1643\$ D Thacker 900\$
 M Holt UNRTD Richmond C C (9)
 R Hough 1876 P Arnstein 1438\$
 E Kupka UNRTD P Brown, Jr. 1675\$
 L Lane 1348\$ D Claudio 1694\$
 R Lee 1592\$ R Ewing UNRTD
 C Maddigan 1887\$ S Marchand 1371\$
 E Meyers 1806\$ A Raymond UNRTD
 R Mitchell 1907\$ F Thompson 1440\$
 M Morrison 1598\$ L Trottier 1691
 R Ng 1903 B Werren UNRTD
 L Osternig 1632\$ San Quentin C C (8)

E Albrecht 1596\$
 W Allen 1530\$
 L Benge UNRTD
 M Brown 1646\$
 W Chamberlain 1737\$
 A McFarlin UNRTD
 N Mihailoviki 1898\$
 R Parra 1640\$
 substitutes:
 E Fisher 1650\$
 W Romero 1666\$
UC Davis C C (10)
 G Drake 1530\$
 M El Sayed 1945
 A Estilri 2028*
 F Garosi 1588*
 R Hansen 1866
 D Jacobson 1629
 M Langhans 1471
 F Leffingwell UNRTD
 R Roach UNRTD
 S Von Oettin-
 gen 2150
Visalia C C (1)
 C Fotias 1667
Walnut Creek C C
(10)
 S Bass 1404\$
 E Doherty 1638\$
 J Ellett UNRTD
 R Ellett 1550/
 R Jacob 1570\$
 D Jones 1635\$
 S Kilker 1662\$
 M McNown 1635*
 S Mujahed 1733\$
 C Vail 1660\$
 *College of the
Sequoias C C (1)
 C Fotias 1667

***CLASSIFIED
 ADVERTISEMENTS***
 (Rate: 5¢ per word
 per issue on any sub-
 ject.)

ADVERTISEMENT:
Note that Scacchie
Voice now offers three
types of advertizing
for the needs and
pocketbooks of anyone;
\$20 for inserts, \$5 for
eight page displays,
and 5¢ per word for
classifieds. Reach over
500 chess players; as-
tonishing results.

BLUE BOOKLET AND EN-
 CYCLOPAEDIA OF CHESS FOR
 CENTRAL CALIFORNIA.
 Only a few copies left
 of this indispensable
 book listing clubs,
 organizations, rules,
 and much else for this
 area. Send 25¢ per
 copy to Editors, CCCA,
 P. O. Box 1622, Oakland,
 CA 94604.

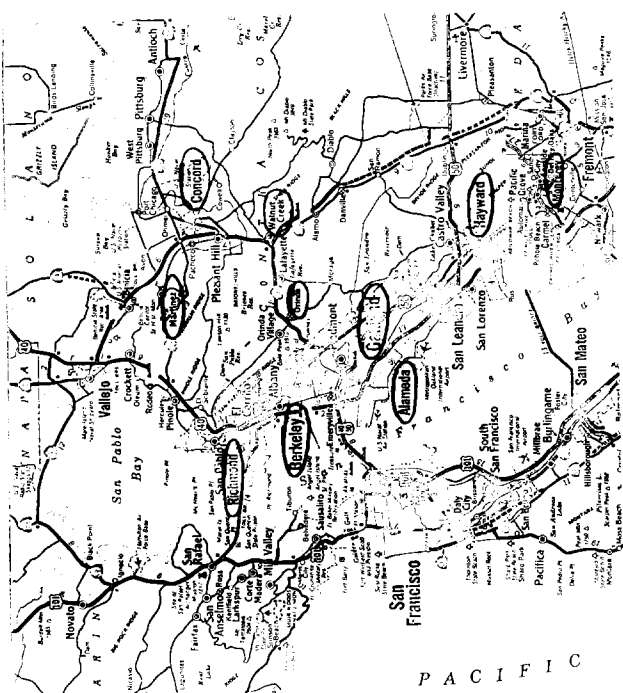
FOUND. Assorted
 chess equipment left
 behind at the CFNC
 tournament on 22-23
 February. To claim
 yours, contact Richard
 R. Shorman, 27858 Tampa
 Avenue, Hayward, CA
 94544.

PUBLICITY NOTES.
 Games of fifteen moves
 or less (ending in checkmate) can be
 published in the Oakland Sunday Tribune with
 the name of both players, if score sheet
 is sent to Ellis Plastrik, 811 Brown Street,
 Martinez, CA 94553. Include first and last
 names and addresses of both players and
 which color was played by each. Your name
 will reach over 800,000 readers.

CORRESPONDENCE CHESS LEAGUE OF AMERICA.
 The league that runs the official annual
 US Correspondence Chess Championship, pub-
 lishes the Chess Correspondent, and rep-
 represents the US on the international level.
 For information write to: Donald R.
 Taylor, Secretary, CCLA; 706 Mt. Hope
 Avenue, Cincinnati, Ohio 45204.

RUSSIAN LANGUAGE CHESS BOOKS AND MAGA-
 ZINES. Am interested in purchasing any--
 old or new--especially tournament bulletins
 from Russia. Contact Richard R. Shorman,
 27858 Tampa Avenue, Hayward, CA 94544
 (782-5029).

FROM THE OAKLAND TRIBUNE
 The chess room, with its in- silent -- battles with national
 laid chessboard tables, world and international champions.
 famous for magnificent -- and is on the fourth floor.
 (Minor Hayes, "S. F.'s Storied Haunt of Book
 Lovers," Oakland Sunday Tribune, 2 Mar. '69, p. 9.)



1 map of CCCA's charter affiliates (5 April 1968). Compare this map with the one on the front cover, showing the present number and locations of affiliates.

*
 NEAT CCCA GENERAL MEMBERSHIP MEETING: Friday, 11 April, 8:00 p.m., Lincoc Elementary School, 225 Eleventh Street, Oakland (the Oakland Chess Club's quarters). All CCCA members, i.e., members of any of the eighteen affiliated clubs listed on p. 4 supra, have full privileges of debate and voting. The meeting is also "open to non-members, who shall have the same rights of debate as members."
 Matters important to Central California chess players always arise. NEAT USCF TOURNAMENTS OF CCCA AFFILIATES: 28-30 March, Fifth Visalia Amateur Open (Visalia Chess Club); 30 March, Second Annual Four-man Sectional (Oakland Chess Club); 24-25 May, Walnut Creek Open (Walnut Creek Chess Club).
 DEADLINE FOR SCACCHIC VOICE MATERIAL: News and tournament data--

Editors
 Central California
 Chess Association
 c/o Post Office Box 1622
 Oakland, California 94604
 Telephone: (415) 582-1973
 FIRST-CLASS MAIL
 ADDRESS CORRECTED
 REQUESTED

ADDRESS: PLEASE NOTIFY THE EDITORS AS SOON AS POSSIBLE OF ANY CHANGE IN YOUR ADDRESS.
 NEAT AFFILIATE ASSESSMENTS DUE: 5 April and are delinquent thereafter; NEAT officers responsible should send 20¢ per club member, along with the full names and addresses (with ZIP codes) of all members to the CCCA Treasurer (address on p. 3 supra).
 USCF MEMBERSHIPS AT 20% DISCOUNT: \$4 (under 21), \$8 (21 and over) per annum--regularly \$5 and 10 respectively--for new or renewal memberships, if sent to the CCCA Treasurer (address on p. 3 supra). Benefits include a Chess Life subscription and eligibility for a USCF rating.
 CHESS CLOCKS--LOWEST PRICE IN US; NO WAITING MONTHS FOR OVERSEAS DELIVERY: BHH Extra, brown plastic case, 6" x 3" x 1 1/2"; two-year guarantee from manufacturer; "the world standard for durable quality and durability at a moderate price" (USCF); only \$12.50.
 Immediate delivery from the CCCA Clock Committee: the CCCA Treasurer (address and telephone number on p. 4 supra) and Jerry Friedman (Hotel Claridge, Room 535, 634 15th Street, Oakland 94612

