
62 Chess Clubs
And Organizations

CIRCULATION
365 Chess Players

49 Chess Publications
and Libraries

S C A C C H I C V O I C E

Central California's Chess Magazine
And
Official Organ Of The
Central California Chess Association
(An Affiliate of the United States Chess Federation)



The scene at the first playoff match between the winner of the Eastern Division, Livermore Alphas, and the winner of the Western Division, Hayward, of the CCCA 1968-9 League. In one of the rooms of the Hayward Chess Club (Hayward Art and Science Center) where the match was played, Jack W. Dennis, CCCA League Director, stands (l.) at the head of the table. The members of the Hayward team, on the left side of the table, are (top to bottom) Lupe Lopez, Everett McNally (CCCA Rating Administrator), Carl R. Ehmann (Team Captain), G. E. Cohen, and Michael Albertson. On the right side of the table Harold Barnett, Team Captain, heads up the Livermore team. Jerry Friedman, Hayward Chess Club Treasurer, stands (r.) with Mr. Dennis. For full details of the league results and playoffs, see p. 5 infra. —Photograph and story by Richard R. Shorman, CCCA Publicity Director.

August-September 1969
Volume II
Numbers iv-v

MARTIN E. MORRISON

Editors

. ELWIN C. MEYERS

TOURNAMENT CALENDAR

4	July	Third Open Air Chess Festival	-	San Bruno
4-6	July	Sixth Annual Arthur B. Stamer Memorial Chess Tournament	USCF	San Francisco
19-20	JULY	THE CENTRAL CALIFORNIA CHESS ASSOCIATION'S ADULT AND JUNIOR CHAMPIONSHIP, INCORPORATING BERTH COMPETITION FOR THE CALIFORNIA STATE CHAMPIONSHIP	USCF, CSCF, JR.	CONCORD
19-20	July	Monterey Art Open	USCF	Monterey
23-24	August	Oakland Chess Club's Sixth Annual Summer Tournament	CFNC	Oakland
31	August	Sonoma State College Open	?	Rohnert Park
-1	September			
6-7	SEPTEMBER	CCCA REGIONAL OPEN CHESS TOURNAMENT AT CONCORD	USCF	CONCORD
27-28	September	Fourth Annual Northern California Class Championships	?	Sunnyvale
	October	Carlmont Chess Tournament	?	San Carlos
	November	Novato Chess Tournament	?	Novato
13-14	DECEMBER	OAKLAND CHESS CLUB'S FOURTH ANNUAL SAN FRANCISCO BAY AREA AMATEUR OPEN CHESS CHAMPIONSHIP	USCF	OAKLAND
	December	Junior Chess Championships	CFNC	?

Tournament Organizers: Please let us know as soon as possible of tentative or definite tournament dates, so that we may be able to reserve the dates for you in the "Tournament Calendar." Details for tournaments will be found in the "News" section. CCCA'S AND CCCA AFFILIATES' USCF TOURNAMENT ARE CAPITALIZED IN THE "TOURNAMENT CALENDAR" FOR MEMBERS' SPECIAL CONSIDERATION.—EDS.

OFFICIAL ANNOUNCEMENT

By JEROME M. LONG

CCCA Summer League Administrator

The CCCA's all-USCF, free Summer League is in full swing. The League consists of twelve teams of four men each. The Eastern Division teams and their captains are: Concord (Paul Westerline), DVI Chess Interest Group-B (Ed D. Ulm), DVI Chess Interest Group-C (Ed D. Ulm), Fremont (Hans Poschmann), Livermore (Harold Barnett), and Martinez and Walnut Creek (Rudy R. Quintero); Western Division: Bechtel (William M. Dickerson), DVI Chess Interest Group-A (Ed D. Ulm), Hayward (Richard R. Shorman), Oakland-A (Richard Lee), Oakland-B (Louis Soto), Orinda (Duncan D. Campbell). Five rounds will be played in each division over the summer.

CAPTAINS SHOULD CAREFULLY NOTE AND MAKE THE FOLLOWING CORRECTIONS: (1) Ed D. Ulm will take L. J. Peterson's place as captain of the DVI teams; his address is the same. (2) The Fremont team is substituting for the originally announced Concord-B team; captain Hans Poschmann's address is 4621 Seneca Park Avenue, Fremont 94538; telephone 656-8505 (residence after 5 p.m.). (3) Paul Westerline is the official captain of the (remaining) Concord team. (4) The match between Livermore and Concord-B (round I, on 13 June) is invalidated. The match is rescheduled for Friday, 18 July, with Livermore the home team and Fremont the visiting team.

NEWS

CCCA Receives Official State Recognition

In advance of the California State Chess Federation's annual meeting 30 May at Pismo Beach, the CCCA Secretary, Martin E. Morrison, in pursuance of the CCCA's policy statement on democratic, USCF-supporting organizations, sent a letter to the ten CSCF Board of Directors members. The letter stated the CCCA's ideal of promoting Central California chess by encouraging democratic discussion and action and by supporting fully the USCF and all state USCF-supporting organizations, especially the official USCF state affiliate, the CSCF. The letter suggested that in order to further the CCCA's goals and to recognize its achievements thus far in promoting local chess through the USCF and the CSCF, the CSCF might: (1) elect a CCCA member as a CSCF Director, (2) elect some CCCA members as USCF Directors; (3) allot to the CCCA the administration of one of the eight berths to the California State Championship. After encouraging preliminary letters from CSCF President, International

(Continued on page 13.)

Editors
Central California
Chess Association
c/o Post Office Box 1622
Oakland, California 94604
Telephone: (415) 582-1973

Scacchic Voice is edited and published bimonthly (with monthly supplementary issues as needed) by Martin E. Morrison and Elwin C. Meyers, Editors, CCCA, in accordance with Article IV, Section iv (f) of the Bylaws of the CCCA, which directs the Editors to "edit and publish the official organ of the CCCA and all business proceedings of the CCCA, to provide a system of communication among the members and affiliates of the CCCA." Every member of the CCCA, i.e., every member of a chess club or organization affiliated to the CCCA, automatically receives a Scacchic Voice subscription mailed to his home gratis.

The CCCA is a nonprofit, democratic organization and an affiliate of the United States Chess Federation. The objects of the CCCA are: "(a) to serve as a regional coordinator of chess activities, clubs, and players; (b) to conduct or sponsor tournaments, leagues, matches, and other forms of chess competition, alone or in conjunction with other chess clubs or organizations; (c) to maintain a system of ratings of the members of the CCCA to supplement those of the USCF; (d) to provide an organ of communication among the members and affiliates of the CCCA, to be published not less than bimonthly; (e) to support the affiliates of the CCCA in every feasible way; (f) to promote the game of chess and the USCF" (Article II, Section i, of the Bylaws of the CCCA). Any Central California chess club or organization supporting these objects is invited to apply for affiliation to the CCCA, with benefits for its members which include a Scacchic Voice subscription, a USCF-CCCA rating, discounts on chess books, equipment, and USCF memberships, and full privileges of participation and voting at CCCA business meetings.

NONMEMBER SUBSCRIPTIONS: \$2.00 per annum.

ADVERTISEMENTS: \$5.00 per eighth page per issue. \$20.00 per insert per issue. (This cost is one cent cheaper per piece for mailing tournament circulars, etc., than postage costs alone.) Classified advertisements: 5¢ per word per issue on any subject.

The opinions expressed in the editorials and by contributors are those of Scacchic Voice's Editors or those of the respective contributors. They do not necessarily constitute an official policy of the CCCA or any of its affiliates. All unsigned articles were written by the Editors.

Submission of material (including photographs) by readers is encouraged and becomes the property of the Editors. Each CCCA affiliate is responsible for sending its own news material to the Editors. To be assured of consideration for publication, news and tournament data should be received at the above address thirty days preceding the month of issuance. Other material (including columns) should be received at the above address sixty days preceding the month of issuance. Material should be typewritten, following the style used in this magazine.

Comments from readers on any feature of this magazine will be appreciated and will be answered. Letters for publication in the "Letters to the Editors" column should be marked "For Publication." Correspondence to the Editors should be sent to the above address; that to any other member of the staff, to that member, in care of the Editors.

Material published in this magazine may be used by other publications if credit is given to Scacchic Voice (including its Editors and address) and if the Editors are sent a copy of the issue containing the material.

CCCA OFFICERS

CHAIRMAN
2159 Mount Diablo Street, Concord 94520
SECRETARY
c/o P. O. Box 1622, Oakland 94604
TREASURER
5315 MacDonald Avenue, El Cerrito 94530
LEAGUE DIRECTOR*
2159 Mount Diablo Street, Concord 94520
RATING ADMINISTRATOR
23716 Lynn Street, Hayward 94541
EDITORS
c/o P. O. Box 1622, Oakland 94604
c/o P. O. Box 1622, Oakland 94604

JEROME M. LONG
#689-4970
MARTIN E. MORRISON
582-1973
LEONARD F. TROTTIER
233-1595
JEROME M. LONG
689-4970
EVERETT MC NALLY
783-8763
MARTIN E. MORRISON
582-1973
ELWIN C. MEYERS

*Mr. Long is Administrator of the Summer League. Jack W. Dennis is officially League Director until 30 June. Election of a new League Director will take place at the next CCCA membership meeting, on 11 July.

PUBLICITY DIRECTORS
27858 Tampa Avenue, Hayward 94544

RICHARD R. SHORMAN
782-5029
ELLIS PLASTRIK
228-1796

811 Brown Street, Martinez 94553

Assistant Publicity Directors: Alameda Co.—(Alameda Ar.) Stephen Nelson.
(Hayward Ar.) Ernest M. Bartholomew, (Livermore Ar.) Wesley A. Nelson, (Newark Ar.
Bans Poschmann, (Oakland Ar.) Theodore E. Anderson and Richard Lee; (Richmond
Ar.) Peter M. Brown, Jr.; Contra Costa Co.—(Concord Ar.) Charles Vail, (Mar-
tinez Ar.) Rudy R. Quintero, (Walnut Creek Ar.) Saleh Mujahed; Marin Co.—
Jack D. Oettli; Monterey Co.—William Kennedy; San Joaquin Co.—L. J. Peterson;
Santa Clara Co.—Richard G. Gordon; Turlare Co.—Chris A. Fotias; Yolo Co.—
Sergius Von Oettingen. Boys' Clubs Liason: Robert A. Alviljar.

Members should feel free to contact their officers regarding any aspect of CCCA
business. They will be happy to hear and to work on your ideas.

CCCA AFFILIATE DIRECTORY
(Current number of CCCA affiliates: 20)

ALAMEDA CHESS CLUB
Mon., 7:00-11:00 p.m.
McKinley Park Rec. Cen.
Walnut St. and Buena Vista
Ave., Alameda

BECHTEL CHESS CLUB*
Only for employees of the
Bechtel Corporation,
San Francisco

BERKELEY YMCA CHESS CLUB
Wed., 7:00 p.m., Palm Rm.
Berkeley Cen. YMCA
2001 Allston Wy.
Berkeley

COLLEGE OF THE SEQUOIAS
CHESS CLUB**
Tues., 12:00 m.-1:00 p.m.
Rm. 338, Col. of the
Sequoias, Visalia

CONCORD CHESS CLUB
Fri., 7:00-11:30 p.m.
Concord Rec. Cen.
2974 Salvio St.
Concord

DVI CHESS INTEREST GROUP
Only for inmates of the
Deuel Vocational Institu-
tion, Tracy

FREMONT CHESS CLUB
Thurs., 7:00-10:00 p.m.
Centerville Jr. H. S.
37720 Fremont Blvd.
Fremont

HAYWARD CHESS CLUB
Mon. and Fri., 8:00-12:00
p.m., Hayward Art and
Science Cen.
2058 "D" St.
Hayward

LIVERMORE CHESS CLUB**
1st and 3rd Fri., 7:30-
11:30 p.m.
Old Lib., Carnage Bldg.
Fourth and "J" Sts.
Livermore

MARTINEZ CHESS CLUB
Mon., 7:30 p.m.
1111 Ferry St.
Martinez

MONTEREY PENINSULA CHESS
CLUB***
Thurs. evenings
Casa Alvarado Chess Cen.
494 Alvarado St., Monterey

NEWARK CHESS CLUB
Tues., 7:00-10:30 p.m.
Newark Community Cen.
35501 Cedar Blvd.
Newark

OAKLAND CHESS CLUB
Fri., 7:00-11:30 p.m.
Multipurpose Rm.
Lincoln Elem. School
225 Eleventh St., Oakland

ORINDA CHESS CLUB
Thurs., 7:30 p.m.
Orinda Community Church
10 Irwin Wy.
Orinda Village, Orinda

PIEDMONT HILLS HIGH
SCHOOL CHESS CLUB**
Mon.-Fri., 2:30-4:00 p.m.
Rm. E-14, Piedmont Hills
H. S., 1377 Piedmont Rd.
San Jose

RICHMOND CHESS CLUB
Fri., 7:00 p.m., except
the 1st Thurs. instead
of the 1st Fri.
Our Lady of Mercy Church
301 W. Richmond Ave., Pt.
Richmond

SAN QUENTIN CHESS CLUB
Only for inmates of the
California State Prison,
San Quentin

UC DAVIS CHESS CLUB
Mon., 7:00-11:00 p.m.
Games Rm., Memorial Union
University of Calif., Davis

VISALIA CHESS CLUB
Fri., 7:30 p.m.
Rec. Park Bldg.
345 No. Jacob St., Visalia

WALNUT CREEK CHESS CLUB
Tues., 7:00 p.m.
Sen. Citizens Hospitality
House, 1385 Civic Dr.
Walnut Creek

*To be formally affiliated at
the next CCCA meeting.
**Does not meet over the summer.
***Temporarily suspended from
active affiliation, "since it
is in the process of reor-

ganizing its financial and constitutional structure and is therefore unable to pay
its assessments for a time."

----- (paid advertisement) -----

Sample books:
De Groot, Thought and
Choice in Chess
Keene, Flank Openings
Füldeak, Chess Olympiads
St. Petersburg 1914

Chess Clocks - Sets - Books
Please write for free catalog
K. Rattmann
2 Hamburg 74
Postfach 363
Germany



Many other books and
magazines available.
Post-free.
Attach international
money order or
personal check.



FINAL CCCA LEAGUE RESULTS
 By JACK W. DENNIS
 CCCA League Director

Eastern Division

	Liv A	Conc B	Liv O	Orinda	Conc A	Mart A	Mart B	Wal Crk	Total
LIVERMORE A	X	1*4	1*3	1*4½	1*4½	1*5½	1*6	1*5	6½-½
Concord B	0*2	X	1*4½	1*5	0*0	1*3	1*5	1*6	4½-2½
Livermore O	1*3	0*1½	X	0*2	1*3½	1*3½	1*3	1*4	4-3
Orinda	0*1½	0*1	1*4	X	0*0	1*4	1*4½	1*6	4-3
Concord A	0*1½	0*0	0*2½	1*6	X	1*6	1*3	1*5	3½-3½
Martinez A	0*½	1*3	0*2½	0*1	0*0	X	1*4	1*4	2½-4½
Martinez B	0*0	0*1	1*3	0*4½	1*3	0*1	X	0*0	1-6
Walnut Creek	0*1	0*0	0*2	0*0	0*1	0*2	1*6	X	1-6

Individual totals, A: D. CLAPP (4), J. Fosaaen (4), J. Shearer (3), G. Boer (2½), J. Greenwald (2), E. Clair (1), D. Geymer (1), R. McCollough (1), S. Mujahed (1), M. Watson (1), P. Berry (½), T. Haratani (½).
 B: W. NELSON (5), D. Smith (5), G. Roust (4½), S. Kitabayashi (4), T. McMullen (4), R. Nace (4), D. Thompson (3), J. Willows (3), R. Quintero (2½), D. Jones (2), F. Ulrich (2), C. Vail (2), M. Weitzner (2), P. Westerline (2), C. Hendrickson (1½), J. Long (1½), R. McSwiggin (1½), F. Olvera (1½), T. Curtis (1), R. Fleuriot (1), G. Wells (1), M. McQuarry (½), D. Schrock (½).
 C: H. WEISSENBORN (7), C. Lechtaler (5), H. Barnett (4½), W. Taylor (4½), R. Bentson (4), D. Campbell (3), G. Hage (3), M. Monaghan (1½), A. Nelson (1½), L. Anderson (1), M. Ayer (1), E. Doherty (1), G. Marcus (1), V. Hirstie (1), R. Jacob (1), H. Nelson (1), E. Plastik (1), B. Powell (1), J. Ranelletti (1), M. Rivera (1), J. Weiler (1), A. Wells (1), R. Swanson (½).

Western Division

	Hayward	Oak S	San Q	Alameda	Newark	Oak O	Rich.	Total
HAYWARD	X	1*3½	0*2	1*3	1*4½	1*5	1*5½	4½-1½
Oakland S	0*2½	X	1*4	1*4½	1*3½	1*3	1*4½	4½-1½
San Quentin	1*4	0*2	X	0*2½	1*3½	1*6	1*5	4-2
Alameda	1*3	0*1½	1*3½	X	1*4½	1*6	0*2½	3½-2½
Newark	0*1½	0*2½	0*2½	0*1½	X	1*6	1*3½	2-4
Oakland O	0*1	1*3	0*0	0*0	0*0	X	1*4½	1½-4½
Richmond	0*½	0*1½	0*1	1*3½	0*2½	0*½	X	1-5

Individual totals, A: N. MIHAILOVSKI (4½), M. Weber (3½), E. McNally (3), R. Shorman (3), H. Poschmann (2½), R. Ng (2), D. Claudio (1½), D. Forthoffer (1½), W. Chamberlain (1), J. Salna (1), A. Shepperson (1), L. Trettier (1), P. Brown, Jr. (1), R. Clipson (½), R. Hansen (½), R. Trenberth (½).
 B: L. LOPEZ (4), C. Tabler (2½), M. Brown (2), E. Fisher (2), D. Klinkenberg (2), A. McFarlin (2), C. Maddigan (2), S. Nelson (2), K. Stacksdale (2), D. Freeman (1½), A. Boyd (1), D. Brooks (1), E. Canfield (1), J. Dorfman (1), C. Ehmman (1), M. Frandy (1), R. Lee (1), E. Nixon (1), L. Osternig (1), J. Friedman (½).
 C: E. ALBRECHT (6), S. Gushwa (3), R. Romero (3), G. Cohen (2), R. Martinez (2), J. Crummins (1½), J. Gerhardt (1½), F. Hibbler (1½), R. Seymour (1½), M. Albertson (1), T. Anderson (1), W. Chew (1), H. Ebarb (1), D. Hoekman (1), G. Marshall (1), R. Parra (1), M. Sloane (1), L. Thompson (1), V. Carpenter (½), G. Orr (½), W. Rostomo (½), B. Weir (½).

N. B. Crosstables list first the outcome of the match before the asterisk and the total game score after the asterisk, for the team listed at the left. All players who at least drew one game are listed in the individual totals. Ties have been broken according to the League Rules to order the teams in each division and to determine the top individual in each class of each division only. Winners of trophies are capitalized.

Playoffs

The first playoff between the two divisional winners, the Livermore Alphas and Hayward, took place on Monday, 9 May, at the Hayward Chess Club. The match resulted in a 3-3 tie, although Hayward forfeited one board. The second playoff

took place at the Livermore Chess Club and again ended in a 3-3 tie. At this point, in order to avoid further inconvenience to the teams involved, it was decided to flip a coin to determine the CCCA 1968-9 League Overall Winner, as the strength of the two teams was a "toss up". The Livermore Alphas won the flip, the Overall Winner title, and the larger trophy. The Hayward team was awarded a fine trophy for being the Western Divisional Winner. Congratulations to both teams for a fine performance.

As I conclude my service as CCCA League Director, let me say that I was extremely pleased with the cooperation of the captains, players, and others who helped make CCCA's first league season such an astounding success. Naturally, there were many minor problems in this first league season, but I am sure that with the experience gained from this season we shall make the 1969-70 season the most smoothly running and fairest league activity around! Don't forget to attend the captains' meeting for the new season, to be held late August-early September, to put the fruits of your experience to work.

GAMES COLUMN
By RICHARD R. SHORMAN
Scacchic Voice Games Columnist
(CCCA Publicity Director)

How much is a tempo worth in chess? When both sides are fully committed to an all-out attack with kings castled on opposite wings, the advantage of an extra move can swell into an overwhelming victory.

Event: Walnut Creek Open
Date: 25 May 1969.

White: Rex Wilcox, San Francisco
Black: James B. Shearer, Livermore
Opening: Sicilian Defense

1 P-K4	P-QB4	10 N-B3 (c)	Q-B4 (d)	19 Q-K4	N-B1
2 N-KB3	N-QB3	11 Q-K1 (e)	R-Q1 (f)	20 RxBch (k)	KxR (l)
3 P-Q4	FxP	12 B-Q3	P-N4	21 R-Bch	K-K2
4 NxP	N-B3	13 P-K5 (g)	FxP	22 QxN	P-N5 (m)
5 N-QB3	P-Q3	14 FxP	N-Q2 (h)	23 B-N6	R-Q2
6 B-KN5	P-K3	15 Q-R4	BxBch	24 R-B7ch	K-K1
7 Q-Q2 (a)	B-K2	16 NxB	P-R3 (i)	25 R-B6ch (n)	K-K2
8 Q-Q-0	Q-0	17 NxBP (j)	KxN	26 RxBch	resigns
9 P-B4	P-QR3 (b)	18 KR-Bch	K-N1		

(a): Rauser's continuation, which almost put the Sicilian out of business some years ago.

(b): Theory recommends 9...NxN; 10 QxN, P-KR3!; 11 B-R4 (11 BxN, RxB; 12 QxQP, Q-R4; 13 P-K5, R-Q1; 14 Q-R3, RxBch; 15 NxB, QxQ; 16 FxQ, B-K2, Q-R4; 12 P-K5 (12 B-B4, R-Q1!); FxP; 13 QxK; QxQ; 14 FxQ, N-Q4; 15 BxB, NxB (Harry Golombek, Modern Opening Chess Strategy, London, 1959, pp. 131-2); 16 B-Q3, P-QN3; 17 B-K4, R-N1; 18 KR-K1, B-N2, with equal end game prospects (I. A. Horowitz, Chess Openings, New York, 1964, p. 373).

(c): Paul Keres scored a brilliant win over Laslo Szabo (USSR-Hungary Match, Budapest, 1955) after the energetic advance 10 P-K5! Play proceeded with 10...FxP; 11 NxN, FxN; 12 FxP, N-Q2 (or 12...N-Q4; 13 N-K4, followed eventually by N-Q6); 13 P-KR4, R-N1; 14 Q-K3, R-K1; 15 R-R3, Q-R4; 16 BxB, RxB; 17 R-N3, R-K1 (parrying White's threat of 18 Q-N5); 18 RxB!, BxB; 19 B-Q3, P-R3 (White has more problems to solve after 19...Q-N5); 20 Q-B4, K-B1 (the only way to ward off both 21 Q-B6 and 21 QxRP); 21 RxF!, KxB; 22 Q-B6ch, K-B1; 23 B-N6, and Black resigned.

(d): Had Black substituted B-Q2 for 0-0 on move eight, he could begin a sharp continuation on the queen side now with 10...P-N4, e.g., 11 BxN (On 11 P-K5 Black hits back hard in the very complex play following 11...P-N5!), BxB; 12 QxP, B-K2; 13 Q-Q2, P-N5 (or 13...R-R2), and Black has a pawn's worth of compensation in his two bishops and queen-side pressure (Isaac Boleslavsky, Caro-Kann bis Sizilianisch, Berlin, 1968, pp. 311-15).

(e): A typical manoeuvre for enforcing P-K5 and re-deploying the queen to the king side.

(f): A costly waste of time. Neither side can afford loss of even a single tempo in such positions. Mandatory is 11...P-N4, throwing everything into the battle for a decisive initiative (12 BxN, FxB).

(g): White starts "firstest with the mostest."

(h): Not 14...N-Q4; 15 NxN!, and Black must part with a pawn after 15...RxBch (15...QxQ?; 16 NxBch, NxN; 17 RxBQ); 16 NxB, FxN.

(i): The bitter consequence of just one lost tempo.

(j): Well played, forcing a fatal breach in the protective wall around Black's KING.

- (k): Violently dispatching the last guard.
(l): Or 20...RrR; 21 Q-R7ch, K-B2; 22 B-N6ch, K-K2; 23 QxPch, R-B2; 24 QxR mate.
(m): Nothing else effectively covers against 23 Q-B5ch.
(n): Of course, 25 RrRch works as well.

***A POSTSCRIPT TO "RULES, RULES, RULES: BANE Or BLESSING?*"**
By MARTIN E. MORRISON
Scacchic Voice Editor

Response to my article "Rules, Rules, Rules: Bane or Blessing?—An Amateur's View of the California State Championship," which appeared in the last issue of Scacchic Voice, was most encouraging. It is refreshing to find that many chess players are truly interested in the tournament rules under which they play and in the power of their tournament directors. Also, in response to my plea in that article that "any of the parties or organizations involved . . . throw further light on the situation by submitting a letter for publication," I am grateful to report the receipt of a letter from no less a figure than Mr. Isaac Kashdan, President of the California State Chess Federation, who also holds the title of International Judge with the right to direct major international tournaments and is a recognized authority on chess regulations. Mr. Kashdan's acumen and interest in problems of this kind will be quite evident, as I reprint excerpts from his letter, interspersing comments of my own.

Dispute One. Jude F. Acers claimed a win from Raymond Schutt, because Mr. Schutt stopped his clock before sealing the envelope containing his move of adjournment.

Mr. Kashdan: "This was a case where a valid act was performed out of order. Forfeit of the game would have been an outrageously severe penalty for a minor infraction, and I cannot understand Acers insisting on it. Mr. Charles R. Savery III, the tournament director . . . acted reasonably in the time penalty."

With this opinion I have concurred in my earlier article. Mr. Acers's insistence on such a harsh penalty might seem excessive, but nevertheless he should have had the opportunity of presenting his views before an appeals Jury ("Player's Committee"), which has the authority to modify the degree of a penalty imposed by the tournament director. Article 48 of the USCF Tournament Rules, requiring such a Jury, is very often ignored at tournaments. Unfortunately at this tournament too no Jury was selected.

Dispute Two. Mr. Schutt remarks to David Blohm after Mr. Blohm's first move, "David, are you playing for a draw?" Mr. Blohm claims an offer of a draw has been made and accepts. The tournament director confirms the draw.

Mr. Kashdan: "The first notice I had of the problems was a telephone call from Ray Schutt after his return to Los Angeles. He told me of the circumstances of the 'draw with Blohm. What he was most concerned about was whether a question such as 'Are you playing for a draw' or 'Are you playing for a win' actually constituted an offer of a draw. If so, he was willing to forget his protest, even though he thought Blohm had acted very unethically."

Why should a player be said to have acted "unethically" simply because he made a claim?

Mr. Kashdan: "I told Schutt that any question of that type has been considered as an offer of a draw under the rules for at least 30 years. I also told him that if I had been present, or if I had been asked at the time of the incident, I would have treated the question as a joke, and asked the players to continue the game. But with the players now 400 miles apart, and considering only the technical aspects, I had to agree with the tournament director."

This is surely an interesting criterion. Should the tournament director (who often has enough to do just to ascertain the facts of a claim) take into account the intent of a player? Often it seems necessary, but is surely a tricky business.

Mr. Kashdan: "The same evening, shortly after my talk with Schutt, Savery called me from San Francisco on the same matter. I told him what I would have done had I known of the dispute earlier, and also informed him that Schutt had withdrawn his protest. Thus I did not uphold Savery in any formal proceeding, but applied some common sense in an unusual situation."

Mr. Kashdan thus clears up the situation which puzzled me in the earlier article. He was not acting in lieu of a Jury, but simply offered an opinion on the dispute. There was, then, no Jury, and the tournament director's decision stood by default. Once again there was no chance for a player to appeal what he thought was an unjust ruling on the part of the tournament director.

Mr. Kashdan: "Now to the technicalities. Let us suppose that Schutt had

offered a draw intentionally, not on the first but on the 31st move, that he was on the move but did not make his move at the same time. Blohm accepts the draw. Schutt then states that since he had not made his move, the offer of a draw was not in accordance with the rules, and he wants to continue the game. How does the director rule? I think Barrett's argument is quite unsound. A player who has committed an error should not benefit by that error. In the above circumstances Blohm could say 'I will consider your offer if you make a move, as required by the rules.' He could also accept the offer, waiving the requirement that the move be made."

From practical experience the rule on the procedure of offering a draw (Article 17a1 of the Rules) is the most difficult to administer, except, perhaps, for the rule on proper castling. The procedure is quite clear, but apparently generally unknown, so that disputes constantly arise and are difficult to settle because there are no guidelines for reasonable penalties. One of the interesting facets of this rule is that a player must make a move before offering a draw, so that he is exposed to the risk of blundering a drawn position before he can offer the draw. Mr. Kashdan's analysis is enlightening, but I still tend to disagree. He states that "a player who has committed an error should not benefit by that error"—a logical and good rule-of-thumb. However, the penalty for the error in offering a draw can hardly be to make the illegal offer legal. Technically, there is no offer for Mr. Blohm, in this hypothetical case, to accept—nor is there in the actual case. Mr. Blohm, nevertheless, could make a claim against Mr. Schutt on the ground that Mr. Schutt made an illegal offer of a draw or distracted his opponent. Such a claim could then result in a draw or a loss on Mr. Schutt's part to compensate Mr. Blohm for the illegality. Since there is in fact no provision for waiving this Rule, Mr. Kashdan's other suggestion seems best: the player being offered the draw should say, "I shall consider your offer if you make a move, as required by the rules." The difficulty inherent in the Rule, however, is still unsolved. It is interesting that just such a hypothetical case as Mr. Kashdan proposes has already occurred in a tournament game at the Oakland Chess Club.

Mr. Kashdan: "Actually the draw was not offered intentionally, and not a single move had been completed. On a narrow construction, however, the rule is the same. Blohm could have insisted that a move be made, or accepted the draw at once."

Ignoring the question of intent, I should feel that Mr. Blohm could waive his claim on an illegal draw offer and insist a move be made, or he could press a claim, but strictly according to the Rule, it does not seem open to him to accept a draw, waiving the requirement that a move be made. This Rule is surely in need of amendment.

Mr. Kashdan closes his letter with some informative observations on rules in general: "On the general philosophy, I do not think it is possible to draft rules that would cover every conceivable circumstance. There are different kinds of tournaments, and different grades of experience among players. As long as most chess games are played for fun, there must be differences in the enforcement of rules, especially in the area of time control, keeping score, making sealed moves, etc. There is a considerable difference between the Piatigorsky Cup Tournament and the Visalia Open. I might forfeit Spassky but instruct an amateur for the same infraction. The point I am trying to make is that there will always be need for some judgment and discretion on the part of the director. Unfortunately there are not too many directors who understand this, and therefore there are not too many good directors."

Mr. Kashdan's point hinges on the discretionary power of the tournament director and is well taken. A clear distinction between "fun" and tournament play must be made, and, of course, there will always be need for judgment and discretion on the part of the tournament director. However, it certainly would be in order for a guide to the practical interpretation and enforcement of these very general Rules to be published, both for the sake of the tournament director, who would then have some guidelines which he most desperately needs, and for the tournament player, who could then expect more standardized interpretation and enforcement of the Rules from tournament to tournament. The establishment of Juries would also insure equitable treatment of the players.

I am very grateful to Mr. Kashdan for taking of his time to present his expert opinion to Scacchic Voice's readers, and any disagreements I might have expressed with his opinions are purely academic. At any rate, I am sure that we have not heard the last of these subjects. I hope that such discussions will promote interest in and awareness of the often imperfect, yet certainly necessary rules of chess.

I was delighted to see that Russell W. Miller, Editor of Northwest Chess, organ of the Washington State Chess Federation, reprinted my earlier article in his June issue. I have been most interested to read in Northwest Chess that WCF members recently were presented with a ballot measure to require a tournament committee at all WCF tournaments. The measure was hotly argued and was finally lost 31-46. The decision whether to have a committee was instead left up to the tournament director by a vote of 48-31. Although the measure is too complex to discuss in detail here and had broader application than only to USCF tournaments, it must be recalled that the USCF Tournament Rules specify a mandatory Jury to hear appeals from the tournament director and specific procedures in the Jury's hearing of appeals (Rules 48-55).

The problem of Juries and appeals, then, goes on. This and the problems with offering a draw should be taken up immediately by the USCF Tournament Rules Committee.

LETTERS TO THE EDITORS

EDITOR MARTIN E. MORRISON:

Thank you for the Scaechic Voice and other material you have been sending me. Your activity and the resulting increase in chess interest in your area are phenomenal. You and your associates have earned a real vote of thanks from organized chess in California and the United States. I know the problems you had from the other organization and the job you must have had to overcome that resistance. . . .

/s/ Isaac Kashdan

Vice President, United States Chess Federation; President, California State Chess Federation

*

EDITORS:

I have heard quite a few complaints about the "open" type chess tournaments. . . . Many players have said that they will not play in "opens" because they are unfair to the lower rated players, in that they have to play against the Master, Expert, or A players in two or three out of the five rounds, and therefore the lower-rated players who win the class prizes do so mostly because of luck and not skill, as it should be.

The only fair type of tournament is the class tourney, where C Class players play other C players, and B and A also play in their own classes. The "open" type should be abandoned for the time being, with the idea of encouraging the beginning players, the C Class, unrated, and B players (who are the majority of CCCA members) to play tournament chess.

One of the main purposes of the CCCA is to promote chess playing, so let's promote it, not discourage it.

I hope other members will write to you and give their views on this subject.

/s/ Leonard F. Trottier

CCCA Treasurer

Mr. Trottier presents a worthwhile point, although it would be only in the rarest of cases that a Master would be paired with a B or C player. In most CCCA tournaments, e.g., a separate Master/Expert division is provided for. The main objections to class tournaments, we feel, are these (and this is not to invalidate Mr. Trottier's point): (1) Lower-rated players never have an opportunity to play substantially higher-rated players; many, both of lower- and higher-rated players find this experience valuable; (2) class tournaments increase the destructive influence of "sandbaggers," those whose ratings are lower than they should be; often these players are found on the borderline between two classes—this difficulty is not the fault of the player, but rather an inherent problem in rating systems; (3) unrated players must be placed in a definite class, but often there is little information available to aid in a class determination.

We are not arguing against the class tournament, but simply pointing out that it too has difficulties, just as the open tournament. Probably the best solution is to vary tournaments. The upcoming CCCA Adult and Junior Championship is, in fact, a compromise between the two types. It will have a primarily Master/Expert division, a primarily Expert/A division, a B/C division, and a Junior division. Although the CCCA has its share of Expert and A players, a majority of members is in the B Class or lower; we try to promote chess playing at both levels, therefore, with an emphasis on the lower classes.

Mr. Trottier will be welcome to present his ideas in more detail at the next CCCA meeting (11 July). A democratic approach, based on the experience of our members present, should go far to instituting the best and fairest tournament program. The Editors intend, very soon, to send out questionnaires to CCCA members on the various aspects of the area's chess program, so that those who choose not to attend the CCCA's open meetings will yet be able to influence the area's chess activities. Of course, readers are always encouraged to express themselves to their 500+ fellow chess players through a letter to the editors.—EDS.7

US CHESS PUBLICATIONS

By MARTIN E. MORRISON
Scacchic Voice Editor

In the May 1969 issue of Chess Life, the official organ of the United States Chess Federation, there appeared a letter from Dr. M. Lee Hyder, Editor of The SCCA News, who asked that a listing of all US chess publications be made, since at the present time no such complete listing exists. As editor for five years of local chess publications, I too have had an interest in such publications and during that time have collected what I believe to be the most complete list of US chess publications in existence. For many years I have traded subscriptions with most of these publications, and I have found that reading them has afforded me the opportunity of learning from the experience of other chess promoters and of reading the differing viewpoints on how chess activity might be improved.

I am at this time, therefore, putting my list at the disposal of the USCF, in order that they might use it for the advantage of US chess, and at the same time I am publishing it here, as I have long intended to do, for the use of the interested chess players of Central California, as well as local, state, and national chess promoters, officers, and editors. It is my hope that its publication will provide some additional thrust to promote chess in this country to the point it should, and will, attain.

Finally, let me express my great thanks to three industrious chess editors, who have kindly supplied me with partial listings from their records: James Bolton, Co-editor of Chessboard, James A. DiDomenico, Editor of Magazine Chess Scribe, and James R. A. Schroeder, quondam Editor of Cleveland Chess Bulletin. The following listing subsumes their listings and includes only US chess publications currently in print. I should welcome being informed of any additions or corrections to this list and trading subscriptions with any publication not now doing so with me.

*

AMERICAN POSTAL CHESS TOURNAMENT NEWS, Clair Palfrey, Ed., 104 E. Parkway Ave., Oshkosh, Wisconsin 54901 (---, bimonthly, \$1.50 per annum).

ARKANSAS CHESS ASSOCIATION NEWSLETTER, c/o Richard Dermer, Secy. and Tournament Dir., ACA, Still Water, Oklahoma 74074 (Arkansas Chess Assoc., monthly, \$2.00 per annum).

CALIFORNIA CHESS REPORTER, THE, W. Guthrie McClain, Ed., 244 Kearny St., 4th Floor, San Francisco, California 94108 (California State Chess Fed., bimonthly, \$2.00 per annum).

CAROLINA GAMBIT, A. R. Burkett, Ed., 100 Purefoy Rd., Chapel Hill, No. Carolina 27514 (No. Carolina Chess Assoc., ?, ?).

CENTRAL CALIFORNIA CHESS LEAGUE NEWSLETTER, Paul T. Hubbard, Ed., P. O. Box 636, Ione, California 95640 (Central California Chess League, periodic, no outside subscriptions).

CHEEKTOWAGA CHESS CLUB COURIER, James Lawrence, Sr., Ed., 4 Randy Wy., Cheektowaga, New York 14225 (Cheektowaga Chess Club, monthly, restricted to members).

CHESS BULLETIN, New Mexico State Chess Assoc., 2525B 25th Loop, Sandia Base, Albuquerque, New Mexico 87100 (New Mexico State Chess Association, ?, ?).

CHESS CHAT, Paul Helbig, Ed., Jersey City YMCA Chess Club, 654 Bergen Ave., Jersey City, New Jersey 07304 (Jersey City Chess Club, monthly, restricted to members).

CHESS CORRESPONDENT, THE, Donald Reithel, Ed., 60 Putnam Rd., Ontario, New York 14519 (Chess Correspondence League of America, ten issues per annum, \$3.50 per annum).

CHESS COURIER, THE, Virgil M. Kimm, Ed., P. O. Box 338, No. Scituate, Rhode Island 02857 (Courier Postal Chess Club, monthly, \$3.00 per annum).

CHESS DIGEST MAGAZINE, Kenneth R. Smith, Ed., P. O. Box 21225, Dallas, Texas 75211 (---, quarterly, \$5.80 per annum).

CHESS FORUM, THE, James Bolton, Ed., 467 Poplar St., New Haven, Connecticut 06513 (? , ? , ?).

CHESS IN ACTION, Earl R. Phillips, Ed., P. O. Box 652, San Jose, California 95106 (Chess Friends of Northern California, quarterly, no outside or trade subscriptions).

CHESS LIFE, Burt Hochberg, Ed., 196 W. Tenth St., New York, New York 10014 (United States Chess Federation, monthly, \$8.50 per annum).

CHESS MID-AMERICA, Jay H. Toll, Ed.-Pub., 271 Fir St., Park Forest, Illinois 60466 (Mid-America Chess Federation and Chicagoland's South Suburban Chess League, monthly, \$5.00 per annum).

- CHESS 'N CHECKERS, J. Myrick Frazier, Ed.-Pub., P. O. Box 746, Linwood Sta., Detroit, Michigan 48206 (—, monthly, \$4.85 per annum).
- CHESS REVIEW, Israel A. Horovitz, Ed., 134 W. 72nd St., New York, New York 10023 (—, monthly, \$7.50 per annum).
- CHESSBOARD, James Bolton and Virgil M. Kims, Eds., 467 Poplar St., New Haven, Connecticut 06513 (Connecticut State Chess Association, bimonthly or quarterly, \$2.00 per annum).
- CHESSMAN, THE, Orlando A. Lester, Ed., P. O. Box 56, W. Newbury, Massachusetts 01985 (—, weekly, ?).
- CHESSPLAYER, THE, Daniel Lamson, Ed., 23 Huntington St., Lowell, Massachusetts 01852 (Northeast Chess League, monthly, ?).
- CHESSSTAMP INFORMANT, Robert B. Long, Ed., 127½ S. Lafayette St., Macomb, Illinois 61455 (—, bimonthly, \$2.50).
- CIRCLE CHESS JOURNAL, Alfonso F. Stanonis, Ed., 2035 Birch St., Des Plaines, Illinois 60018 (—, quarterly, ?).
- CLEVELAND CHESS BULLETIN, Milan R. Vukceovich, Ed., 1634 Belmar Rd., Cleveland Heights, Ohio 44118 (Cleveland Chess Assoc., monthly, \$3.00 per annum).
- DAVIS CHESS NEWS, Sergius Von Ottingen, Ed., 2423 Temple Dr., Davis, California 95616 (UC Davis Chess Club, monthly, restricted to members).
- DEAR CONFRERES, Marshall Rohland, Ed., 6846 N. 24th Pl., Milwaukee, Wisconsin 53209 (—, occasional, free, but only sent to chess officials, promoters, and organizers).
- EN PASSANT, W. M. Byland, Ed., Golden Triangle YMCA, 304 Wood St., Pittsburg, Pennsylvania 15222 (Pittsburg Chess Club, monthly, ?).
- EN PASSANT, Martin E. Morrison and Elvin C. Meyers, Eds., Oakland Chess Club, P. O. Box 1622, Oakland, California 94604 (Oakland Chess Club, occasional, restricted to members).
- ESCHEC, Guy D. Bell, Ed., 516 Rampano Ave., Pompton Lakes, New Jersey 07442 (Assoc. of Chess Philatelists, monthly, \$3.00 per annum).
- EUROPEAN CHESS DISTRICT NEWSLETTER, c/o Maj. Arthur C. Joy, Pres., European Chess District, 0407606/HQ, EUCOM (J6), APO, New York 09128 (European Chess District, bimonthly, ?).
- FIANCHETTO, THE, Tom Thackery, Education Dept, Sponsor, Box 629, Florence, Arizona 85232 (Books and Crooks Chess Club, five to seven issues per annum, free).
- FLORIDA CHESS NEWS, Frank D. Rose, Ed., 931 W. E. 22nd Dr., Wilton Manors, Florida 33306 (Florida Chess Assoc., quarterly, ?).
- GAMBIT, THE, 4524 Calvert St., Lincoln, Nebraska 68506 (? , ? , ?).
- GEORGIA CHESS LETTER, Philip K. Mace, Ed., 4346 Snellings Dr., Columbus, Georgia 31907 (Georgia Chess Association, bimonthly, \$2.00 per annum).
- GOSS CHESS CLUB NEWS, Lionel Stanfield, Ed., 5336 N. Virginia St., Chicago, Illinois 60625 (Goss Chess Club, ? , ?).
- ILLINOIS CHESS BULLETIN, Frank Skoff, Managing Ed., 1400 W. Warner St., Chicago, Illinois 60613 (Chicago Chess Foundation, quarterly, \$3.00 per annum).
- INTERCOLLEGIATE CHESS LEAGUE BULLETIN, Peter Meschter, Ed., 158 Burton House, 420 Memorial Dr., Cambridge, Massachusetts 02139 (? , ? , ?).
- IOWA CHESS EN PASSANT, John M. Omesa, Ed., 320 Columbia Circle, Waterloo, Iowa 50701 (Iowa State Chess Association, approximately quarterly, \$1.00).
- JOURNAL OF RECREATIONAL MATHEMATICS, Joseph S. Madachy, Ed., 4781 Bigger Rd., Kettering, Ohio 45440 (—, quarterly, \$9.00 per annum).
- KING'S FILE, THE, Sterling Smigh, Ed., 2508 Queen Chapel Rd., #2, Hyattsville, Maryland 20782 (? , ? , ?).
- LATVIAN GAMBIT, Viktor Ikaunicks, Ed., P. O. Box 810, Crookston, Minnesota 56716 (American Latvian Chess Assoc., monthly, \$3.00 per annum).
- MAGAZINE CHESS SCRIBE, James A. DiDomenico, Ed., 20 Simmons St., Providence, Rhode Island 02909 (—, monthly, \$3.00 per semi-annum, \$6.00 per annum).
- MARYLAND CHESS NEWS, Maj. Robert A. Karch, Ed., DCSPER Intel Comd, Fort Holabird, Maryland 21219 (—, bimonthly, \$2).
- MINNESOTA CHESS JOURNAL, Dr. George Tiers, Ed., 165 S. Cleveland Ave., Saint Paul, Minnesota 55105 (Minnesota State Chess Association, nine or more issues per annum, \$1.00 per annum).
- MONTEREY PENINSULA CHESS CLUB BULLETIN, William Kennedy, Ed., P. O. Box 261, Monterey, California 93940 (Monterey Peninsula Chess Club, monthly, restricted to members).
- NEW YORK STATE CHESS NEWSLETTER, Robert L. LaBelle, Ed., 149 Ontario St., Phelps, New York 14532 (New York State Chess Assoc., quarterly, no outside subscriptions).
- NORTHWEST CHESS, Russel W. Miller, Ed., P. O. Box 1631, Yakima, Washington 98901 (Washington State Chess Fed., in cooperation with the Oregon Chess Fed. and the Idaho Chess Fed., monthly, \$4.00 per annum for those 21 years of age and over, \$3.00 for those under 21).

NOST-ALGIA, Robert H. Lauzon, Ed., "Drawer G," 151 W. Jefferson Rd., Pittsford, New York 14534 (Knights of the Square Table, monthly, restricted to members).
OHIO CHESS BULLETIN, John J. Weithoff, Ed., 324 Cushing Ave., Kettering, Ohio 45429 (? , ? , ?).

PENNSWOODPUSHER, THE, Steve Caruthers, Ed., R. D. 2, Ephrata, Pennsylvania 17522 (Pennsylvania State Chess Fed., bimonthly, \$2.00 per annum).
RHODE ISLAND ADULT CHESS CLUB PAPER, Prof. Winfield P. Scott, Ed., Providence, Rhode Island 02908 (Rhode Island Adult Chess Club, ? , ?).
RHODE ISLAND CHESS BULLETIN, Daniel Semonoff, Ed., 434 Pine St., Providence, Rhode Island 02907 (? , ? , ?).

SCCA NEWS, THE, Dr. M. Lee Hyder, Ed., S. Carolina Chess Assoc., 33 Longwood Dr., Aiken, South Carolina 29801 (S. Carolina Chess Assoc., quarterly, \$3.00 per annum for adults, \$2.00 per annum under 19).

SCACCHIC VOICE, Martin E. Morrison and Elwin C. Meyers, Eds., Central California Chess Assoc., c/o P. O. Box 1622, Oakland, California 94604 (Central California Chess Assoc., bimonthly with monthly supplementary issues as needed, \$2.00 per annum).

SOUTH DAKOTA CHESS BULLETIN, 508 S. Pierre St., Pierre, S. Dakota 57501 (? , ? , ?).

SPRINGER, THE, Paul A. Zink, Ed., 728 Olive Ct., San Bruno, California 94066 (San Bruno Chess Club, monthly, restricted to members).

TENNESSEE CHESS NEWS, Peter Lahde, Ed., 2609 Sailboat Ct., Nashville, Tennessee 37217 (? , bimonthly, \$2.00 per annum).

TERRACHESS, Gordon S. Barrett, Ed., 12576 Daryl Ave., Granada Hills, California 91344 (Southern California Chess League, biweekly, \$5.50 per annum).

TEXAS KNIGHTS, Robert F. Brieger, Ed., 220 W. 18th St., Houston, Texas 77008 (Texas Chess Assoc., monthly, ?).

WEST VIRGINIA CHESS BULLETIN, Paul Sayre, Ed., 1033 14th St., Huntington, West Virginia 25701 (? , ? , ?).

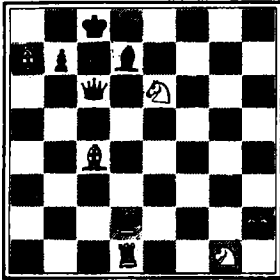
WISCONSIN STATE UNIVERSITY CHESS BULLETIN, c/o Paul Wiegner, 1521 Hageboom Ave., Eau Claire, Wisconsin 54701 (? , ? , ?).

YALE CHESS NEWS, H. W. Russell, Ed., 3126 Yale Sta., New Haven, Connecticut 06520 (? , ? , ?).

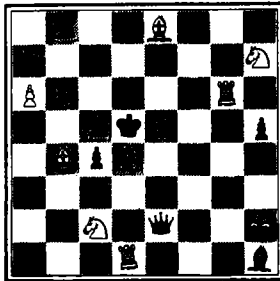
MATING MAZE

By RICHARD LEE

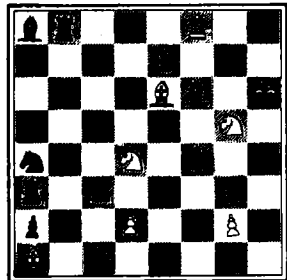
Scacchic Voice Problems Columnist
(CCCA Assistant Publicity Director,
Alameda County, Oakland Area)



No. 54
White mates in two.



No. 55
White mates in two.



No. 56
White mates in two.

This issue's column features as problem 54 an original composition by CCCA member Fred Leffingwell, of the UC Davis Chess Club; it is herewith published for the first time. I encourage other budding problematists among Scacchic Voice's readers to submit their work for publication. This magazine has many prominent readers, so who knows—maybe you'll be hearing from Chess Life or Chess Review!

As in the past, readers who submit correct solutions to all three problems before the next issue will receive a prize—it costs nothing to try but a stamp.

SOLUTIONS TO LAST ISSUES PROBLEMS: no. 51, K-K4; no. 52, Q-R6; no. 53, N-K6.

NEWS

(Continued from page 2.)

Grandmaster Isaac Kashdan and CSCF Secretary Spencer H. Van Gelder, the CSCF voted to elect Mr. Morrison as CSCF Director-at-Large, and to elect Mr. Morrison, Jerome M. Long, CCCA Chairman, and Elwin C. Meyers, CCCA Editor, as USCF Directors. The matter of the berth was referred to W. Guthrie McClain, Chairman of the CSCF Northern California Tournament Committee. At this time Mr. McClain and the other members of the committee have allotted the berth to the CCCA. This year the competition will be held at the CCCA's 19-20 July tournament in Concord. All state chess players, especially those of Central California, are encouraged to try for the berth.

The CCCA's thanks and gratitude go to the CSCF Directors who have thus furthered our chess promotional work, and especially to Mr. McClain, who has generously taken of his time to discuss many proposals and procedures with the CCCA Secretary. The March-April issue of The California Chess Reporter, organ of the CSCF, edited by Mr. McClain, has been sent to all Scacchic Voice's mailing list. The top quality of this historical record of California chess demonstrates the service which the CSCF is rendering the chess players of the state. All CCCA members are urged to join the CSCF and to receive this excellent magazine. (Details on p. 16.)

Walnut Creek Open Draws Over Forty Players

By RICHARD R. SHORMAN
CCCA Publicity Director

Over forty chess players participated in the Walnut Creek Open, a fully rated USCF event, 24-25 May. The Expert/Master Division was won by Alex Shobeck, of Monterey (4½-1); second was Rex Wilcox, of San Francisco (4½-1). Class A was won by William Gray, Jr., of Monterey (4½-1), followed by Bernard Lainson, of Monterey (4-1); Class B, by Donald Clapp, of Lafayette (3½-1½), followed by Duncan D. Campbell, of Grinda; and Class C, by Paul Westerline, of Concord (3-2), followed by Harold Barnett, of Livermore, Tony Ebarb, of Union City, and Dean Starr, of Balboa Island (2½-2½). Junior Division winner was Terry Garnett, of Concord.

The tournament was remarkable for the great number of participants from CCCA affiliate Monterey Peninsula Chess Club. Reports were that Saleh Mjashed, CCCA Assistant Publicity Director for the Walnut Creek area did no less than a phenomenal job in organizing the highly successful tournament. Richard R. Shorman, CCCA Publicity Director, directed.

Fourth Annual Peninsula Open Chess Championship Tournament

By DAVID P. LYNN

Scacchic Voice Peninsula Reporter

The Fourth Annual Peninsula Open, held at the Lockheed Auditorium in Sunnyvale, 26-27 April, was again a big success with a very good turnout. Tied for first place in the USCF Open Section were Frank Thornally, of Berkeley (4½-1½) and Rex Wilcox, of San Francisco, thus splitting combined first and second place prize fund. A four-way tie resulted for second place: David Blohm, of Berkeley, Alan LaVergne, of Menlo Park, Ira Pohl, of Palo Alto, and Dennis Fritzingler, of San Francisco, each with 4-1 scores. Tied for best A with 3-2 scores were Robert Hamme, of Palo Alto, Al Raymond, of San Francisco, and Theodore Syrett, of Menlo Park.

Non-USCF winners were Gary Pickler, William Chesney, and James B. Shearer, Carl Mueller, Jeffrey White, Matthew Sullivan.

School Chess League Completes Play

By THEODORE E. ANDERSON

CCCA Assistant Publicity Director, Alameda County, Oakland Area

The School Chess League, an organization of 35 high school chess teams in the Bay Area, recently completed play, which was held in eight divisions. Divisional winners were the teams from Oceana (Pacifica), Gunn (Palo Alto), Saratoga, Piedmont Hills High School (San Jose), a CCCA affiliate, Mt. Eden (Hayward), San Leandro, and Oakland Technical. In another division Kennedy (Fremont) and Washington (Fremont) tied for first. The League was directed by Theodore E. Anderson, CCCA Assistant Publicity Director.

Sixth Annual Arthur E. Stamer Memorial Chess Tournament

By WILLIAM G. ADDISON

Director, Mechanics Institute Chess Club

This well-known Bay Area USCF tournament will be held on the fourth floor of the Mechanics Institute Building, 57 Post Street, San Francisco, on 4-6 July, beginning 4 July at 9:00 a.m. Entry for the seven round Swiss tournament is \$15.00 (\$12.50 by mail in advance). A total prize fund of \$675 dollars is guaranteed, with prizes for overall, A, B, C, unrated, and junior (under 18) participants.

USCF-CCCA RATINGS
By EVERETT MC NALLY
CCCA Rating Administrator

The purpose of these ratings, to be published bimonthly, is to give every CCCA member a current rating for participation in USCF and CCCA tournaments, leagues, and matches. The ratings are divided into two categories: Adjusted USCF Ratings and Supplementary CCCA Ratings.

Adjusted USCF Ratings are given to all those CCCA members who have USCF ratings, and are the last-published official USCF ratings, adjusted to include USCF tournament, league, and match play in Central California since the last publication of the official USCF ratings. Supplementary CCCA Ratings are given only to those CCCA members who do not have USCF ratings. For these ratings all available information is used to give a player the fairest initial rating, which is then adjusted on the basis of subsequent tournament, league, and match play between CCCA members.

From the above it will be seen that official USCF ratings are the backbone of this system. It is hoped that in the future CCCA members will all become members of the USCF, so that the Supplementary CCCA Ratings will be unnecessary.

For this listing official USCF ratings through the March Rating Supplement have been used. The listing has been updated to the 5 April CCCA membership list.

One final note. It would be helpful to the Rating Administrator to have a recent listing of club ratings for use in determining initial Supplementary CCCA Ratings. Club raters are therefore requested to send such a listing often, to the Rating Administrator, whose address is given on page three supra.

Expert ...2000-2199 Class B ...1600-1799 Class D ...1200-1399 Class E ...1199 & below
Class A ...1800-1999 Class C ...1400-1599

Adjusted USCF Ratings (65)

* * *			
Top Ten			
S Von Oettingen	2127	M Hough	1991 R Hammie 1953 S Trezz 1904
W Allen	2060	A Raymond	1989 D Rapoport 1948
D.Forthoffer	2050	M Watson	1975 G Bigelow 1905

* * *			
Alameda CC (3)			
A Hall	1565	C Larson	1607 L Trottier 1588
R Ng	1864	G Roust	1683 UC Davis CC (7)
L Petty	1647	J Shearer	1686 M El Sayed 1973
* * *			
Bechtel CC (3)			
A Saguisag	1874	R Swanson	1616 F Garosi 1616
W Allen	2060	R Ulrich	1868 R Hansen 1844
G Bigelow	1905	C Vail	1543 D Jacobson 1592
* * *			
Concord CC (11)			
D Clapp	1708	H Poschmann	1597 M Langhans 1299
J Fosaaen	1885	R Silla	F Leffingwell 1215
R McCollough	1820	T Anderson	1681 S Von Oettingen 2127
M McNow	1625	R Clipson	1749 Visalia CC (1)
F Olvera, Sr.	1642	M Crossland	C Fotias 1586
M Rivera, Sr.	1367	R Cuneo	1457 Walnut Creek CC (3)
D Thompson	1668	J Dennis	1745 M McNow 1625
F Ulrich	1543	D Forthoffer	1742 S Mujahed 1639
C Vail	1597	R Hammie	1849 C Vail 1597

* * *			
Supplementary CCCA Ratings (235)			
Alameda CC (9)			
J Weiler	1457	R Hansen	G Harkus 1660
P Westerline	1293	R Hough	1844 H Brown UNRA V Hirstio 1490
* * *			
College of the Se- quoias CC (1)			
C Fotias	1586	C Maddigan	1991 D Freeman 1633 J Long 1798
* * *			
DVI Chess Interest			
Group (1)			
R Hamilton	1840	J Salna	1263 J Gerhardt 1609 M Monaghan 1487
* * *			
Fremont CC (1)			
H Poschmann	1681	R Trenberth	1106 S Nelson 1721 C Moncrief UNRA
* * *			
Hayward CC (4)			
E Bartholomew	1586	R Turney	1831 G Orr 1644 R Tyler 1656
G Cohen	1384	G Weber	1864 D Schneider UNRA B Savage UNRA
L Lopez	1862	Orinda CC (1)	1837 O Sobol 1711 J Smith UNRA
E McNally	1887	D Campbell	1829 L Sutton 1500 L Turner 1697
* * *			
Livermore CC (4)			
H Barnett	1321	A Raymond	1516 M Weber 1892 A Wells 1584
* * *			
DVI Chess Interest			
Group (14)			
Hayward CC (4)			
E Bartholomew	1586	R Turney	1440 W Dickerson UNRA D Bissell 1700
G Cohen	1384	G Weber	1817 Concord CC (14) J Cain 1900
L Lopez	1862	Orinda CC (1)	L Anderson 1473 H Chappel 1900
E McNally	1887	D Campbell	1644 N Doke UNRA C Comstock 1900
* * *			
Livermore CC (4)			
H Barnett	1321	A Raymond	1989 T Garnett 1621 M Guerra 1500
* * *			
Livermore CC (4)			
H Barnett	1321	A Raymond	1989 T Garnett 1539 R Harris 1300

R James	1500	J Greenwald	1701	T Wong
L Larson	1700	S Kitabayashi	1671	L Yale
R Larson	1700	R Nace	1662	<u>Orinda CC (21)</u>
T Marrs	1300	D Petersen	1487	M Ayer
R Martinez	1700	J Petersen	1486	L Bosa
F Phillips	1900	E Plastrik	1050	A Boyd
L Syphert	1700	R Quintero	1717	L Brown
J Woldridge	1300	W Sinn	UNRA	E Clark
<u>Newark CC (19)</u>		W Taylor	UNRA	E Dekar
M Alvarez	UNRA	A Verheyer	UNRA	E Doherty
W Baird	UNRA	M Weitzner	1549	R Fleuriot
T Bowman	UNRA	<u>Newark CC (7)</u>		D Geymer
K Burton	UNRA	T Ebarb	UNRA	J Henneberger
D Flack	UNRA	E Gushwa	1785	C Hurt
D Flegal	UNRA	S Gushwa	1518	D Jones
D Fleming	UNRA	G Marshall	1550	C Lechtaler
T Hengle	UNRA	E Nixon	UNRA	M McQuary
K Jackson	UNRA	W Orr	UNRA	L Magnabossa
A Kollow	UNRA	B Seymour	UNRA	R Nash
G MacLeod	UNRA	<u>Oakland CC (52)</u>		D Schroeck
J McMonagle	UNRA	C Barnes	UNRA	D Sherman
D Perry	UNRA	F Bauer	1500	D Twigg
M Pick	UNRA	A Boyd	UNRA	B Wagner
M Provencal	UNRA	E Britton	1485	H Wright
J Thayer	UNRA	H Brown	UNRA	<u>Piedmont Hills High</u>
M Thayer	UNRA	P Cass	UNRA	<u>School CC (17)</u>
P Walters	UNRA	W Chew	UNRA	J Brittain
D Wheeler	UNRA	F Cook	UNRA	R Gordon
<u>Hayward CC (17)</u>		M Despot	UNRA	D Hazlett
R Ausmus	1773	L Dobin	UNRA	M Krueger
M Canfield	1657	G French	UNRA	R Langone
J Crimmins	1399	J Friedman	1664	G Masunaga
C Ehwann	1660	D Fung	UNRA	M Masunaga
M Frandy	1631	H Gee	UNRA	A Mock
J Friedman	1664	J Gerhardt	1609	F Mock
E Gegan	UNRA	J Gerrard	1554	G Montanaro
R Holloway	UNRA	C Haacker	UNRA	D Morin
L Hopkins	UNRA	B Hansen	UNRA	D Myers
K Lawless	UNRA	J Harner	UNRA	R Ramirez
L Osternig	1632	G Hayes	UNRA	S Scampini
A Pasch	UNRA	F Hibbler	1643	K Terry
E Salo	1578	M Holt	UNRA	D Thacker
R Shorman	2009	R Jordan	UNRA	K Yamasaki
L Vadnais	1624	E Kupka	UNRA	<u>Richmond CC (15)</u>
R Weikum	UNRA	F Leffman	UNRA	P Arnstein
J Wheeler	1599	E Meyers	1806	P Brown, Jr.
<u>Livermore CC (16)</u>		R Mitchell	1907	M Carmel
P Barry	1669	M Morrison	1598	D Claudio
G Boer	1919	L Osternig	1632	R Ewing
T Curtis	1620	F Pyle	1612	D Fjelstad
R Gulliford	UNRA	E Remy	1634	W Garrison
G Hage	1514	E Rubsamem	1548	W Jemison
T Haratani	1647	E Sagan	UNRA	D Madeiros
C Hendrickson	UNRA	S Schmidt	UNRA	G Madeiros
T McMullen	1600	S Schulman	UNRA	S Marchand
R McSwiggin	1599	A Sletner	1621	F Payne
A Nelson	1459	E Smith	1550	A Smith
H Nelson	UNRA	A Som	UNRA	F Thompson
W Nelson	1650	L Soto	UNRA	B Werren
J Ranalletti	1590	W Sprague	UNRA	<u>San Quentin CC (9)</u>
D Smith	1646	K Stocksdale	1666	E Albrecht
H Weissenborn	1565	C Tabler	1764	M Brown
J Willows	1659	E Tracy	UNRA	W Chamberlain
<u>Martinez CC (17)</u>		F Van Sant	UNRA	E Fisher
B Alaimo	1534	J Vetter	UNRA	A McFarlin
R Alwillar	UNRA	L Warden, Jr.	UNRA	N Mikhailoviki
C Bailey	1600	M Weber	1892	R Parra
R Brown	UNRA	R Wheeler	UNRA	W Romers
M Canciamilla	UNRA	J Whitaker	UNRA	W Rostemo
S Damasceno	1477	H Wong	UNRA	<u>Walnut Creek CC (7)</u>

UNRA	S Bass	1404
UNRA	E Doherty	1653
	J Ellett	UNRA
1490	R Ellett	1550
UNRA	R Jacob	1570
UNRA	D Jones	1635
UNRA	S Kiker	1662

***CLASSIFIED
ADVERTISEMENT***
(5¢ per word per issue
on any subject.)
FOUND AT THE HAYWARD
CHESS CLUB. Wooden chess
set and hard fabric board.
To recover, please call
Richard R. Shorman, 782-
5029, and identify prop-
erty in detail.

NEWS NOTES
PIEDMONT HILLS HIGH
SCHOOL CHESS CLUB was
declared won by Matthew
Krueger, the only unde-
feated player (3-0). On
14 June an eight-man,
three-round Swiss tourney
was held at the home of
the club advisor and CCCA
member, Richard Langone.
The title of FREE Champion
was won at the tourney by
Richard Gordon; second was
Anthony Mock; third, Ken
Terry. Highest C was
Michael Masunaga, now C
Champion. Between rounds
two and three the players
feasted on a delicious
dinner prepared by Mrs.
Langone. (Story by Richard
G. Gordon, CCCA Assistant
Publicity Director for
Santa Clara County.)

MONTEREY RAPID TRANSIT
CHAMPION FOR MAY. Bernard
Linton, master of the ex-
ceedingly complicated off-
shoot of the Giuoco Piano,
the Max Lange, crushed all
of the opposition to win
the chess pin prize for
this monthly event. (May
issue of the "MPCC Bule-
tin," William Kennedy, Ed.)

JULY 20 IS THE ANNIVER-
SARY of the FIDE (World
Chess Federation), whose
emblem is reproduced be-
low (the Latin motto means
"We are one body").



GENS UNA SUMUS

U.S. POSTAGE
6c



...ing each other at the Walnut Creek Open Chess Championships (24-May) are Master/Expert Division winner Alex Subobek, member of CA affiliate Monterey Peninsula Chess Club, and runner-up Rex Icox, of San Francisco (l. and r. front, respectively). Looking on is Saleh Majahed, tournament organizer and CCCA Assistant Publicity Director for the Walnut Creek area (l., center); Terry Garnett, of record, Junior Division winner (r., center); Marc McNorn (l., rear); and David Azevedo (r., rear), both participants in the tournament. Richard R. Shorman, CCCA Publicity Director, directed the USCF tournament. --Photograph and story by Richard R. Shorman.*

NEXT CCCA GENERAL MEMBERSHIP MEETING: Friday, 11 July, 8:00 p.m., incoln Elementary School, 285 Eleventh St., Oakland (the Oakland Chess Club's quarters), in the Music Room to the rear of the Multi-purpose Room. All CCCA members, i.e., members of any of the 20 affiliated clubs listed on p. 4 supra, have full privileges of debate and voting. Nonmembers are welcome. Election of a League Director and discussion of the Summer and 1969-70 Leagues will take place.

NEXT USCF TOURNAMENTS OF THE CCCA AND ITS AFFILIATES: 19-20 July, in CCCA's Adult and Jr. Championship, incorporating Berth Competition in the Calif. State Championship; 6-7 September, CCCA Regional Open Chess Tournament at Concord. See enclosure and p. 2 for details.

DEADLINE FOR SCACCHIC VOICE MATERIAL: News and tournament data, August; other material, including columns, 25 July--for next issue. CHESS ORGANIZERS: Please put Seacchic Voice on your mailing list or newsletters and tournament bulletins.

TELEPHONE: (415) 582-1973
THIRD-CLASS MAIL
ADDRESS CORRECTION
REQUESTED

c/o Post Office Box 1692

CASA ALVARDO COLLEGE
P. O. BOX 1705
MONTREY CA 97004

ADDRESSEE: PLEASE NOTIFY THE EDITORS AS SOON AS POSSIBLE OF ANY CHANGE IN YOUR ADDRESS.

NEXT AFFILIATE ASSESSMENTS DUE: 5 August and are delinquent thereafter. Club officers responsible should send 20¢ per club member, along with the full name and address (with ZIP code) of each member to the CCCA Treasurer (address on p. 3 supra). *A fine of \$1 will be levied against any affiliate which pays its assessment more than two weeks late without a valid excuse accepted by the Treasurer."

USCF MEMBERSHIPS AT 20% DISCOUNT: \$4 (under 21), \$8 (21 and over) per annum--regularly \$5 and \$10, respectively--for new or renewal memberships, if sent to the CCCA Treasurer (address on p. 3 supra). Benefits include a Chess Life subscription and eligibility for a USCF (national) rating. CSCF MEMBERSHIPS: \$2.50 per annum; send to Dr. Boal Mulgren, CSCF Treasurer, 1501 Le Roy Ave., Berkeley 94708. Benefits include a subscription to The California Chess Reporter. CCCA members are most heartily urged to become members of the USCF and CSCF.

CHESS CLOCKS--LOWEST PRICE IN THE US; NO WAITING MONTHS FOR OVERSEAS DELIVERY: BBK Extra, brown plastic case, 6" x 3" x 1 1/2"; two-year guarantee from manufacturer; "the world standard for dependable quality and durability at a moderate price" (USCF). ONLY \$12.50. Immediate pickup from the CCCA Treasurer (address and telephone number on p. 3 supra) or by mail (add 60¢ postage and insurance).

