

76 Chess Clubs
And Organizations

CIRCULATION
463 Chess Players

64 Chess Publications
and Libraries

THE CENTRAL CALIFORNIA CHESS VOICE



CENTRAL CALIFORNIA'S CHESS MAGAZINE
and
OFFICIAL ORGAN
of the
CENTRAL CALIFORNIA CHESS ASSOCIATION
(An Authorized Affiliate
of the United States Chess Federation)

MARTIN E. MORRISON
Editors
. ELWIN C. MEYERS

June-July 1970
Whole Number 15



Intense concentration is pictured in this scene during the third round of the Central California Chess Association's USCF Spring Class Chess Tournament at Concord (4-5 April). Jude F. Acers (l. fr.), of San Francisco, winner of the Master/Expert/Class A Division and \$50, is shown playing Erik D. Osburn, of San Jose. At the far beard is Horst Mohrmann (l.), of San Jose, winner of the First Class A prize of \$25, playing Everett L. McNally, of Hayward, CCCA Club Coördinator. Byron D. Delaney, CCCA Publicity Director and one of the tournament directors, looks on. Further information on the tournament will be found in the "News" section of this issue. (Photograph courtesy of Richard R. Shorman, CCCA League and Publicity Director.)

Editors
Central California
Chess Association
Post Office Box 1622
Oakland, California 94604
Telephone: (415) 582-1973

Send change of address notices, undeliverable copies, orders for subscriptions, and other mail items to the magazine's mailing address above. POSTMASTER: SEND P. O. D. FORM 3579 TO THE MAGAZINE'S MAILING ADDRESS ABOVE.

Chess Voice is published bimonthly. Every member of the CCCA, i.e., everyone who is certified by the appropriate officer of a chess club or organization affiliated to the CCCA [listed on p. 15] to be a member or officer of the affiliate, receives mailed to his home a Chess Voice subscription paid for as part of the affiliate's CCCA assessments in a distinct, voluntary, and independent act, the relation of subscriber being clearly understood and fully agreed to. Known office of publication (not the magazine's mailing address): Campus Bancroft Building, Room 206, 2440 Bancroft Way, Berkeley, California 94704. Application to mail at second-class postage rates is pending at Berkeley, California.

The opinions expressed in Chess Voice are those of the Editors or of the respective contributors. They do not necessarily constitute an official policy of the CCCA or any of its affiliates.

NONMEMBER SUBSCRIPTIONS: \$2.00 per annum.

ADVERTISEMENTS: 5¢ per word per issue on any subject (classified advertisements), \$5.00 per eighth page per issue, \$20.00 per insert per issue (this cost is more than one cent cheaper per page for mailing tournament circulars, etc., than postage costs alone).

CCCA OFFICERS AND OFFICIALS

CHAIRMAN	MARTIN E. MORRISON
Post Office Box 1622, Oakland, CA 94604	582-1973
SECRETARY	SALEH MUJAHED
Post Office Box 1622, Oakland, CA 94604	(582-1973)
TREASURER	LEONARD F. TROTTIER
5315 MacDonald Avenue, El Cerrito, CA 94530	233-1595
LEAGUE DIRECTORS	FRANK V. LEFFMAN
3546 Lincoln Avenue, Oakland, CA 94602	533-3166
27858 Tampa Avenue, Hayward, CA 94544	RICHARD R. SHORMAN
EDITORS	782-5029
Post Office Box 1622, Oakland, CA 94604	MARTIN E. MORRISON
Post Office Box 1622, Oakland, CA 94604	582-1973
PUBLICITY DIRECTORS	ELWIN C. MEYERS
BYRON D. DELANEY	(582-1973)
Richard R. Shorman	782-5029
Meekland Manor, Apartment 33, 16913 Meekland Avenue, Hayward, CA 94541	276-0521

Area Vice Chairmen: Sergius Von Oettingen (Sacramento-Stockton Area), Lee Henderson, Frederick J. Ulrich (North Bay Area), Jerome Friedman (Central Bay Area), William T. Adams (South Bay Area), Chris A. Potias (Central Valley Area).

CCCA Championship Administrator: Hans Poschmann; Club Coordinator: Everett L. McNally.

Standing Committees: Clock--Leonard F. Trottier, Chairman, Frank V. Leffman, Martin E. Morrison; Tournament and Club Relations: Martin E. Morrison, Chairman, Elwin C. Meyers (Standing Tournament Subcommittee), Harold L. Barnett, Byron D. Delaney, Everett L. McNally.

USCF Directors: William T. Adams, Elwin C. Meyers, Martin E. Morrison, E. H. Mueller, Frank M. Olvera, Sr., Robert L. Oylar, Gunnar H. Rasmussen, Manuel Rivera, Sergius Von Oettingen. USCF Directors: Martin E. Morrison, Gunnar H. Rasmussen.

Members should feel free to contact their officers and officials regarding any aspect of chess business; they will be happy to serve you. Of course, additional help is always needed; offer your help to your CCCA.

TOURNAMENT CALENDAR

The CCCA's and CCCA affiliates' USCF tournaments are capitalized, an asterisk denoting that CCCA California State Chess Championship Qualifying Points will be awarded at the tournament. (To obtain them, a player must display his CSCF membership card or join the CSCF at the tournament.) Tournament organizers, please let us know AS SOON AS POSSIBLE of tentative or definite tournament dates.

6-7 JE.	*LIVERMORE OPEN	USCF	LIVERMORE
6, 7, 13 Je.	California Gold Rush Tournament	USCF	Orange
13-14 Je.	Four-round "Tornado" Rating Tournament	USCF	San Francisco
21 Je.	8th Ann. Scholarship Chess Festival	-	Hayward
27-28 JE.	6TH ANN. MONTEREY INT. OPEN CHESS TOURNAMENT	USCF	MONTEREY
3-5 Jul.	7th Ann. Arthur B. Stamer Mem. Tournament	USCF	San Francisco
4 Jul.	San Bruno Chess Festival	-	San Bruno
18-19 JUL.	*CCCA'S USCF CLASS CHESS TOURNAMENT AT SAN JOSE	USCF	SAN JOSE
8-9 AUG.	***CCCA'S CHESS CHAMPIONSHIP OF CEN. CALIF. TOURNAMENT (TRIPLE QUALIFYING POINT TOURNAMENT)	USCF	HAYWARD
15-16 Aug.	Oakland CC's 7th Ann. Summer Tournament	CFNC	Oakland
5-6 SEPT.	*CCCA'S SUMMER USCF CLASS CHESS TOURNAMENT AT CONCORD	USCF	CONCORD
5-7 Sept.	Calif. Open Championship	USCF, CSCF	Ventura
19-20 Sept.	Four-round "Tornado" Rating Tournament	USCF	San Francisco
26-27 Sept.?	5th Ann. No. Calif. Class Championships	CFNC (& USCF)	Sunnyvale
10-11 Oct.	No. Calif. Championship	USCF	San Francisco
24-25 Oct.	1st Pathfinder Team Tournament	-	Fremont
14-15 NOV.	*4TH ANN. SAN FRANCISCO OPEN CHESS TOURNAMENT (TENTATIVE)	USCF	SAN FRANCISCO
19-20 DEC.?	*OAKLAND CC'S 5TH ANN. SAN FRANCISCO BAY AREA AMATEUR OPEN CHESS CHAMPIONSHIP TOURNAMENT	USCF	OAKLAND
2 JAN.	*CCCA'S WINTER REGIONAL 1-DAY ROUND ROBIN CHESS TOURNAMENT AT WALNUT CREEK	USCF	WALNUT CREEK
13-14 FEB.	*CCCA'S CLASS CHESS CHAMPIONSHIPS OF CEN. CALIF. TOURNAMENT	USCF	BERKELEY
20 MAR.?	*OAKLAND CC'S 4TH ANN. 4-MAN SECTIONAL CHESS TOURNAMENT	USCF OR CFNC	OAKLAND
9-11 APR.	*7TH ANN. PRE-EASTER VISALIA AMATEUR OPEN CHESS TOURNAMENT	USCF	VISALIA
22-23 MY.	*CCCA'S SPRING USCF CLASS TOURNAMENT AT CONCORD	USCF	CONCORD

CCCA 1970 USCF SUMMER LEAGUE

All affiliates interested in playing in the CCCA 1970 USCF Summer League should immediately contact League Director Frank V. Leffman (address and telephone number on page 2) for full details, since play will begin in June. Teams will consist of four players, who must all be USCF members by the time they play. Teams will be apportioned into divisions based on geography. All games will be USCF rated, and no board fee is required. A handsome trophy will be awarded to the Championship Team.

CSCF INITIATES RATING CARD

Spencer H. Van Gelder has devised and copyrighted a "CSCF /California State Chess Federation/ Rating Card," on which players can keep track of their approximate updated USCF ratings. Latest USCF ratings are approximately calculated according to the USCF general formula. The Card was tested with success at the CCCA's Spring USCF Class Chess Tournament at Concord (4-5 April) and will be further tested at the CCCA's three summer tournaments. In using it, a player calculates his updated rating using the simple formula and enters it on his card, which is carried by him to the tournaments in which he plays. Before his new official USCF rating is published in Chess Life & Review, the player has the choice of using either his approximated rating on the Card or his last official USCF rating. When a player does get a new official USCF rating, it is then entered on the card, and the approximation process begins again.

The use of the Card is free, another of the benefits of CSCF membership, along with eligibility for Qualifying Points toward becoming the CCCA's Finalist in the California State Chess Championship and a bimonthly subscription to The California Chess Reporter. If you wish to join, see page 16 of this issue for details.

NEWS

Acers Tops CCCA Concord Tournament

Jude F. Acers, a USCF Master, of San Francisco, took first place in the CCCA's Spring USCF Class Chess Tournament at Concord, held 4-5 April, with a score of $4\frac{1}{2}$ ($\$50.00$). Just behind, at 4-1, was Horst Mohrmann, of San Jose, who captured the First Class A prize of $\$25.00$. Both were playing in the Master/Expert/Class A Division. In the Class B Division, Donald W. Clapp, of Lafayette, a familiar CCCA tournament figure, won first place and $\$50.00$ with his perfect 5-0 score. Roger K. Alexander, of El Cerrito, placed second at 4-1 ($\$25.00$). A four-way tie occurred in the Classes C/D/E Division, each winner receiving $\$12.50$: Frank M. Olvera, Sr., of Pittsburg, Edward S. Yeung, of Berkeley, Dan Pearce, of Colfax, and Edward Silva, of Castro Valley. All scored 4-1. Mark Hoffman, of San Francisco, won the $\$15.00$ Classes D/E prize with a score of 2-3.

The tournament drew 49 participants to the Concord Senior Citizens Center. Byron D. Delaney, CCCA Publicity Director, and Richard R. Shorman, CCCA League and Publicity Director, directed.

*

Oakland's Four-Man Sectional Draws 38 USCF Participants

On Sunday, 22 March, the Oakland Chess Club's Third Annual Four-Man Sectional Chess Tournament drew 38 USCF participants out of a total of 46 entrants; thus, the tournament was the largest of its kind in this area. Winners of the USCF Sections were: (1) Michael R. Ewell, of Monterey, $2\frac{1}{2}$ - $\frac{1}{2}$; (2) Craig Barnes, of Berkeley, $2\frac{1}{2}$ - $\frac{1}{2}$; (3) Charles A. Maddigan, the 1969 San Francisco Bay Area Amateur Open Chess Champion, of Oakland, $2\frac{1}{2}$ - $\frac{1}{2}$; (4) Stephen P. Nelson, of Alameda, and James B. Shearer, of Livermore, $2\frac{1}{2}$ - $\frac{1}{2}$; (5) Douglas Ulch, of San Jose, 3-0; (6) Dr. Kent Bach, of San Francisco, $2\frac{1}{2}$ - $\frac{1}{2}$; (7) Harry Overholtzer, of Menlo Park, 3-0; (8) Ake A. Gulimov, of San Francisco, 3-0; (9) Wayne R. Judd, of McClellan Air Force Base, 3-0; and (10) Richard Lee, of Oakland.

*

State Federation Holds Annual Meeting

By SPENCER H. VAN GELDER

CSCF Secretary

The night before the South was to defeat the North 15-11-2 for the first time in many years, the annual meeting of the California State Chess Federation (CSCF) was held at the Vandenberg Inn, Santa Maria, on 9 May, followed by a meeting of the CSCF Board of Directors. Among the actions taken were:

(1) CSCF Directors from the north of the state were re-elected for the next year: Martin E. Morrison (At-Large, Northern California Area), Kenneth M. Goodall (Northern California Area), Gunnar H. Rasmussen (Redwood Empire Area), Ostap Bender (Central California), and W. Guthrie McClain (San Francisco Bay Area).

(2) A committee to consist of Martin E. Morrison, H. Darrell Rader, Theodore Yudakufski, and Isaac I. Kashdan, President of the CSCF, ex officio, was appointed to work on drawing up a complete tournament calendar for the state, in order to avoid conflicts between events.

(3) The California State Open Championship was announced for Ventura.

*

Flash: Fischer Tops Hertsegnovi Rapids and Zagreb Peace Tournament

Translated from Sovetsky Sport by RICHARD R. SHORMAN

CCCA League and Publicity Director

BELGRADE, 9 April. (TASS.) Twelve chess players competed in a rapid transit tournament held in the Yugoslavian resort town of Hertsegnovi. Eleven of them had just finished playing in the USSR vs. The Rest of the World team match in Belgrade.

The tournament consisted of two rounds, with each participant completing a total of 22 games. American grandmaster Robert J. Fischer amassed 19 points, losing only to Viktor Korchnoi (USSR) and drawing against David Bronstein (USSR), Samuel Reshevsky (USA), Wolfgang Uhlmann (East Germany), and Vlastimil Hort (Czechoslovakia).

Mikhail Tal (USSR) scored $4\frac{1}{2}$ points; Viktor Korchnoi (USSR), 14; Tigran Petrosian (USSR), $13\frac{1}{2}$; David Bronstein (USSR), 13; Vlastimil Hort (Czechoslovakia), 12; Milan Matulevic (Yugoslavia), $10\frac{1}{2}$; Vasily Smyslov (USSR), $9\frac{1}{2}$; Samuel Reshevsky (USA), $8\frac{1}{2}$; Boris Ivkov (Yugoslavia), $7\frac{1}{2}$; and P. Otoich (Yugoslavia), 2.

ZAGREB. The results of the Zagreb Peace Tournament, the first international tournament in which Robert J. Fischer has played in more than a year, are (to twelfth place): Robert J. Fischer, 1st, 13; Vasily Smyslov, Viktor Korchnoi, Vlastimil Hort, Svetozar Gligorich, 2nd-5th, 11; Tigran Petrosian, 6th, $10\frac{1}{2}$; Minić, Boris Ivkov, 7th-8th, 9; Kovachević, Bertok, 9th-10th, $8\frac{1}{2}$; Wolfgang Uhlmann, 11th, 8; Walter S. Browne, 12th, $7\frac{1}{2}$.

AFFILIATE NEWS

If your affiliate is not listed, we have not received any material concerning your activities. Please keep us informed of all your events for publication.



CATERPILLAR CC . . . Pictured at left are Ed Skinner (r. fr.), first-place winner in the club's first tournament, proud winner of the trophy displayed on the chessboard. His opponent, Paul Tucker, club Vice President, reads the chess book which he received as second-place winner. Former club Secretary-Treasurer, Ralph E. Ammendolia (r. mid.) plays Joseph Thiel, and Paul J. Thiel (l. bk.) plays Leroy Inman. More chess players, including beginners, are urged to join for future tournaments.

EVERYMAN ATHLETIC CLUB CC . . . has begun match play with contests against teams from Clovis High School and Roosevelt High School. Although Everyman lost both matches, play was spirited, and the team gained much experience to prepare it for future CCCA matches. . . . USCF Expert Philip D. Smith gave a simultaneous exhibition on 7 April on eight boards. John Rowell, of Roosevelt High School, gave the Expert his only loss.

FREMONT CC . . . The winner of the club Championship Tournament, who therefore will represent the club in the CCCA Championship Tournament, is Ben Jansen. Mr. Jansen also receives the Ebony Book for his victory. . . . USCF Master Jude F. Acers gave a simultaneous exhibition on 7 May. Twenty-one opponents dueled the Master with all but three falling to his energetic play. Leroy Inman, of San Leandro, a member of CCCA affiliate Caterpillar CC, defeated Mr. Acers, and Hans Poschmann, CCCA Championship Administrator and President of the club, along with Kenneth Jackson, Jr., of Union City, managed to draw. Preceding the exhibition, Mr. Acers gave a lecture with wall board, commenting upon four full games.

HAYWARD CC . . . USCF Expert Gary L. Pickler gave a simultaneous exhibition on 27 March against 15 opponents divided into two categories. The Expert lost to D. J. Fitzpatrick and Bendon Holloway, winning all the other games for a fine showing.

MONTEREY PENINSULA CC . . . David Henry won the Monterey Peninsula Schools Chess Championship. . . . Michael R. Ewell and Bernard Lainson won the rapids title for March and April, respectively. . . . Mr. Lainson also won a five-round 30-30 tournament on 28 March. . . . The club team won a match over the Salinas CC 7-4. . . . At a business meeting on 3 April a film was shown of the Schools Tournament, and it was decided to have an open house each quarter and to have occasional lectures on chess openings. . . . Bernard Lainson won both the Winter Rating Tournament and the Cherry Tree Open on 21-22 February.

NEWARK CC . . . The winner of the club Cup Tournament was Hans Poschmann. . . . William Orr, with a perfect 5-0 score, was named Club Champion and will represent the club in the CCCA Championship. Kenneth Jackson, Jr., won the First Junior title.

OAKLAND CC . . . Richard Lee, Treasurer of the Oakland CC, has come up with an interesting idea that may appeal to other clubs. Mr. Lee is maintaining a scrapbook containing all results of club tournaments and activities, as well as a copious number of photographs of just about everything that happens at the club.

SAN QUENTIN CC . . . Yes, it's Jude F. Acers again, this time preparing to give a simultaneous exhibition at this club on 7 July on his nationwide tour of prisons, hospitals, and small city chess clubs, where most masters never play. The CCCA is proud to have a backer as generous as Mr. Acers in giving time to promote such often neglected activities; our thoughts are with him on his tour.

UC DAVIS CC . . . Sergius Von Oettingen, of Davis, CCCA Area Vice Chairman, took first place in the Davis Knock-Out Tournament, thus becoming Davis's qualifier for the CCCA Championship. Garland L. Brinkley, of Sacramento, finished second, and Gary L. Pickler, of Davis, third. Twelve players participated in the USCF-rated tournament. . . . Mr. Pickler won a speed tournament on 23 March with an excellent 18-2 score. Don Napoli was second with a 14-6 tally. . . . The club recently finished first place in the annual Intercollegiate Regional Tournament for Region 15 (California and Nevada), held at Fresno on 19-21 February. The team was led by Gene Lee and William Alexander, who also finished in a tie for first

(Continued on page 6.)

CCCA 1969-70 LEAGUE: INTERIM RESULTS
 By FRANK V. LEFFMAN and RICHARD R. SHORMAN, CCCA League Directors

USCF Category, Division I								USCF Category, Division II											
	R1	R2	R3	R4	R5	R6	R7	Tot	Rnk		R1	R2	R3	R4	R5	R6	R7	Tot	Rnk
DVI-B	1	$\frac{1}{2}$	1	-	1	1	1	5 $\frac{1}{2}$	1	Mechanics I	1	-	1	1	1	1	1	6	1
Fremont	0	$\frac{1}{2}$	0	$\frac{1}{2}$	1	1	-	3	2-4	Oakland-B	1	1	1	0	1	-	1	5	2
Hayward	1	-	0	$\frac{1}{2}$	1	$\frac{1}{2}$	0	3	2-4	Alameda	0	1	-	1	1	0	$\frac{1}{2}$	3 $\frac{1}{2}$	3
San Jose	0	0	1	1	-	0	1	3	2-4	Oakland-A	0	1	0	1	0	1	-	3	4
Livermore-A	1	1	-	0	0	$\frac{1}{2}$	0	2 $\frac{1}{2}$	5-6	Orinda	1	0	0	-	0	$\frac{1}{2}$	$\frac{1}{2}$	2	5
Livermore-B	0	1	1	$\frac{1}{2}$	0	-	0	2 $\frac{1}{2}$	5-6	Concord	-	0	1	0	0	$\frac{1}{2}$	0	1 $\frac{1}{2}$	6
DVI-A	-	0	0	$\frac{1}{2}$	0	0	1	1 $\frac{1}{2}$	7	Bechtel	0	0	0	0	-	0	0	0	7

DVI-B and Mechanics Institute, then, are the Divisional Winners in the USCF Category. They will play one playoff match to determine the Championship Team in the USCF Category.

Independent Category, Division I								Independent Category, Division II											
Livermore	1	1	1	-	0	1	$\frac{1}{2}$	4 $\frac{1}{2}$	75%	S. Rosa-A	1	1	1	1	1			5	100%
Oakland	-	1	1	$\frac{1}{2}$?	0	?	2 $\frac{1}{2}$	63%	Richmond	1	1	0	0	1			3	60%
Orinda	1	0	1	0	1	-	?	3	60%	S. Rosa-B	1	0	1	0	1			3	60%
Alameda-B	1	-	0	1	?	?	?	2	50%	Vallejo	0	1	?	1	0			2	50%
Alameda-A	0	0	0	$\frac{1}{2}$	1	1	-	2 $\frac{1}{2}$	42%	Martinez	0	0	?	?	?			0	0%
Newark	0	0	-	1	0	?	$\frac{1}{2}$	1 $\frac{1}{2}$	30%	Walnut Crk	0	0	0	?	?			0	0%
Fremont	0	1	0	0	?	0	?	1	20%										

AFFILIATE NEWS
 (Continued from page 5.)

place individual honors with Ross Batt, of Stanford, with a 4-1 score. Hugh Everett and Fred Leffingwell also scored well for the team. (Mr. Alexander is pictured to the left, and Mr. Lee, to the right of the center photograph below.) . . . The club team recently defeated Sacramento in a match 16 $\frac{1}{2}$ -11 $\frac{1}{2}$. Pictured in the central photograph of the match are Garland L. Brinkley (l. fr.) playing Gary L. Pickler. Behind Mr. Pickler are William Alexander (cen.) and Stephen Sosnick (bk.).



William M. Alexander



Gene F. Lee

VISALIA CC-COLLEGE OF THE SEQUOIAS CC . . . Seventeen-year-old Michael Mills, of Porterville, scored 5 $\frac{1}{2}$ points out of a possible 6 to win the Sixth Annual Pre-Easter Visalia Amateur Open. Michael Polowitz, of North Hollywood, finished second. Harry Gandara, of Whittier, and George Oakes, of Salinas, tied for third. There were 34 players in the tournament, organized by CCCA Area Vice Chairman Chris A. Fotias, and directed by William Bragg, of Los Angeles.

WALNUT CREEK CC . . . On 10 May the club co-sponsored with the CCCA the CCCA's Spring Regional One-Day Round Robin Chess Tournament. Richard R. Shorman, CCCA League and Publicity Director, directed the event, composed of four-man sections. The Class A Section was won by Stephen Kornher, of Rohnert Park, 3-0; Marc McNow, of Pleasant Hill, 2-1, placed second. The Class B Section was taken by Duncan D. Campbell, of Orinda, 2 $\frac{1}{2}$ - $\frac{1}{2}$, followed by Roger K. Alexander, of El Cerrito, 2-1. Leonard F. Petty, of Alameda, won the Class C Section with a perfect 3-0 score, ahead of Johann Weiler, of Walnut Creek, and Eric Rubsam, of Oakland, both scoring 1 $\frac{1}{2}$ -1 $\frac{1}{2}$. Rendon Holloway, of Castro Valley, won the Unrated Section, 2 $\frac{1}{2}$ - $\frac{1}{2}$, followed by Ken Miller, of Concord, 2. Four sections, less one player, participated.

UNDERSTANDING CHESS LAWS AND TOURNAMENT DIRECTION: MORE ON TIME FORFEITURE

By MARTIN E. MORRISON

Chess Voice Editor and Columnist on Chess Laws and Tournament Direction

Questions and comments on chess laws and tournament direction are welcome, but I regret that I cannot promise to answer letters personally, although they may be discussed in my columns. Send them to me at P. O. Box 1622, Oakland, CA 94604.

*

In the last (April-May) issue of Chess Voice, Peter J. Meschter proposed the awarding of time forfeits only on the basis of a player's claim, since a tournament director would not "be able to oversee every time difficulty." On this proposal I expressed reservations, mainly on the ground that such a procedure would tend to undermine the uniformity of the time control. Mr. Meschter has kindly sent the following letter in rebuttal to my comments:

"I read your comments about my letter to Chess Voice with interest. I have no doubt that the spirit of the FIDE rules is that forfeit can be obtained by either the player or the tournament director, in theory; nor that it is the duty of the director, in theory, to establish when a forfeit has occurred.

"However, suppose two games on opposite sides of the tournament hall have critical time pressure situations simultaneously, so that the director can oversee only one? Clearly there will be a much greater chance that a time forfeit in this game will be correctly awarded, than in the other, where a claim must occur. Of course, the director could appoint someone to oversee the other game, but that person might not be unbiased or might not act in a proper manner.

"In practice, then, I still assert it is better, in a large Swiss with only 1 or 2 directors, to have forfeits by claim only. This puts the onus for claiming a forfeit directly on the person who is most affected by it, and ensures as even an application of the rules as possible under non-ideal conditions.

"Frankly, I disagree with Mr. DiDomenico that the opponent has the absolute duty to claim a forfeit. If a player, satisfied that it can hurt only himself not to claim, refuses to claim because circumstances are unclear or because the game is interesting, I would stand by his right to do so. If the allocation of a prize is at stake, of course he should claim.

"In general, the system I propose is no less "defined and formal" than the one proposed by Mr. DiDomenico, and I believe that it reduces rather than enhances order and friendliness during a tournament. I am not disagreeing with either you or Mr. DiDomenico on the rules, but rather on the practical application of those rules to smooth the course of a tournament in which many persons may be competing."

In reading these arguments, I feel that there is a tension between theory (i.e., the FIDE World Chess Federation Laws) and practice—which Mr. Meschter himself recognizes—but to my mind the tension is too great to justify the proposal. I cannot reconcile the FIDE Laws' clear prescription (it is the duty of the tournament director "to establish that the prescribed time limit has not been exceeded by the players" Article 19 (b)) with whatever expediency is obtained from limiting time forfeitures to those claimed by the players. I see one of the main purposes of the Article as to insure that the time control be observed as uniformly as possible. Granted that no system is perfect, having both the players and tournament director on the watch ensures more uniformity and thereby, as I see it, more fairness.

The tension between theory and practice is again evident when Mr. Meschter says he would support a player's right not to claim a time forfeit. Even Mr. Meschter, though, admits that a player should claim if a prize is at stake. To me, however, the law, which controls Mr. Meschter's exception, seems unexceptionable—"a game is lost by a player . . . who has not completed the prescribed number of moves in the time specified Article 17.1." The law is stated with the same finality as the one for checkmate: "The game is won by the player who has mated the enemy King."

In conclusion, then, although I fully support Mr. Meschter's desire "to smooth the course of a tournament" and appreciate his writing to share his proposal, I personally feel that the proposal is too much at variance with the explicit meaning of the Laws. However, I am sure that Mr. Meschter—and I as well—would appreciate and profit by hearing from others on this question, tournament directors and players alike. We all have a lot to learn and work on in this critical field of chess laws and tournament direction, and it is only by mutual effort and communication that we shall improve the organization and conduct of our tournaments.

BUSINESS PROCEEDINGS OF THE CCCA

A regular meeting of the CCCA was held on Friday, 3 April 1970, in the Faculty Dining Room of Lincoln Elementary School, 225 Eleventh Street, Oakland. The meeting was called to order at 8:02 p.m. by the Chairman, Martin E. Morrison, the Secretary, Saleh Mujahed, also being present.

The total attendance for the meeting was as follows: Hans Poschmann (Fremont CC); Jerome Friedman, Everett L. McNally, Richard R. Shorman (Hayward CC); Harold L. Barnett, Wesley A. Nelson (Livermore CC); Craig Barnes, John Gerrand, Frank V. Leffman, Charles A. Maddigan, Elwin C. Meyers, Martin E. Morrison (Oakland CC); Leonard F. Trottier (Richmond CC); Lee Henderson (Santa Rosa CC); Saleh Mujahed (Walnut Creek CC). Visitors: Raymond Desmond, Chris Kollerer (Chabot CC). Seven of 34 affiliates.

It was moved by Mr. Nelson and adopted unanimously that the minutes of the previous (9 January) meeting be approved as published in Chess Voice, the CCCA's official organ, with the following correction: THAT "THUS FULFILLING THE CCCA'S OBLIGATION" BE ADDED TO THE RESOLUTION "THAT THE TREASURER DISBURSE ANOTHER \$10 TO MR. AMKRAUT, THE CCCA STATE CHAMPIONSHIP QUALIFIER, FOR EXPENSES."

It was adopted unanimously THAT THE FOLLOWING CHESS CLUBS BE AFFILIATED TO THE CCCA: (1) ALAMEDA NAS CHESS CLUB, UPON THE APPLICATION OF BRUCE F. HANSEN, PRESIDENT PRO TEMPORE, (2) ANTIOCH CHESS CLUB, UPON THE APPLICATION OF HOWARD LEWIS, PRESIDENT PRO TEMPORE, (3) BERKELEY LIVE OAK CHESS CLUB AND (4) BERKELEY SENIOR CENTER CHESS CLUB, UPON THE APPLICATION OF CLARENCE B. MAYNARD, PRESIDENT PRO TEMPORE, (5) CAPITAL CITY CHESS CLUB, UPON THE APPLICATION OF ANTHONY J. DIMILO, USCF DIRECTOR, (6) CATERPILLAR CHESS CLUB, UPON THE APPLICATION OF PAUL J. THIEL, PRESIDENT, (7) MARIN CHESS CLUB, UPON THE APPLICATION OF LEROY A. POST, PRESIDENT, (8) ST. MARY'S COLLEGE CHESS CLUB, UPON THE APPLICATION OF FRED CROSBY, PRESIDENT PRO TEMPORE, (9) UC CHESS CLUB, UPON THE APPLICATION OF MARTIN E. MORRISON, VICE PRESIDENT.

It was moved by Mr. Leffman and adopted THAT THE BERKELEY YMCA, MONTEREY PENINSULA, AND SAN QUENTIN CHESS CLUBS BE RESTORED TO ACTIVE AFFILIATION, BUT THAT IF BY THE NEXT MEETING THE SAN QUENTIN CHESS CLUB HAD NOT RESPONDED FAVORABLY TO BECOMING ACTIVE, AND THE BERKELEY YMCA AND MONTEREY PENINSULA CHESS CLUBS HAD NOT PAID THEIR ASSESSMENTS, THE CCCA CONSIDER RESCINDING THEIR AFFILIATION.

The Treasurer, Mr. Trottier, gave the following:

REPORT OF THE TREASURER OF THE CCCA
FOR THE PERIOD 9 JANUARY TO 3 APRIL 1970

<u>Receipts</u>	
Balance on hand 9 January 1970	League Fund (\$148.74) General Fund 210.14 Total <u>\$358.88</u>
Bimonthly assessments of affiliates	\$ 85.40
Fines for late assessments payments	3.00
USCF memberships received	192.00
Rental loan for CCCA's USCF Class Chess Tournament at Berkeley (The Washingtonian), 21-22 February, repaid	15.00
Charter use fee for co-sponsoring above tournament	5.00
Clock sales	<u>232.59</u> <u>532.99</u> <u>\$891.87</u>

<u>Disbursements</u>	
USCF memberships transmitted to the USCF	\$192.00
Affiliation of the CCCA to the USCF through February 1970	10.00
David L. Amkraut, CCCA State Championship Qualifier, for expenses ..	10.00
League postage	(6.00)
Clock purchases	175.00
Clock postage, insurance, and overpayment	2.95
Chess Voice expense	255.00
Postal permit	30.00
Quarterly interest on clock loan	<u>3.25</u> <u>\$684.20</u>
Balance on hand 3 April 1970	League Fund (142.74) General Fund 64.93 <u>\$891.87</u>

The report was adopted by general consent.

Mr. Morrison, Editor, announced the proposed publication by the Editors of a Tournament Direction Guide and Manual with no money to be needed from the CCCA.

Mr. Trottier, Chairman of the Standing Clock Committee, reported that during the period 19 January-3 April 1970, eighteen clocks had been sold for \$232.59 gross. Expenses totaled \$181.20, including clock purchases (\$175.00), postage and insurance and overpayment refund (\$2.95), and quarterly interest on the loan (\$3.25). Profit: \$61.39, with four clocks as yet unsold.

Mr. Poschmann, CCCA Championship Administrator, announced that eleven af-

filiales had entered the Championship and shoved his magnificent plaque for the CCCA Champion, adorned with a foot-high king and emblazoned with the CCCA's emblem. A loud round of applause was given to Mr. Poschmann for his excellent work. Mr. Poschmann then informally discussed with the members his rules for the Championship.

Mr. Morrison, Chairman of the Standing Tournament and Club Relations Committee, read a letter from David L. Amkraut, the CCCA's Finalist in the California State Chess Championship of 1969, requesting an additional \$25, to make a total of \$50, for expenses incurred in his participation in the Finals. After considerable debate, it was moved by Mr. Nelson that Mr. Amkraut be given an additional \$25. The motion was lost 2-5.

It was adopted that the meeting recess at the call of the chairman. The chairman declared the meeting recessed at 10:40 p.m. and called it to order again at 10:51 p.m.

The Chairman announced as old business the Executive Board's recommendation THAT ARTICLE II, SECTION i (c), AND ARTICLE IV, SECTION iv (e), OF THE CCCA BYLAWS BE STRUCK OUT. Mr. Nelson had been instructed to report the results of a poll of the members and affiliates on their feelings. Mr. Nelson orally summarized his fourteen-page written report /filed/ and after concluding that on the basis of the poll the CCCA should no longer maintain its rating system, he tendered his resignation as Rating Administrator. It was moved by Mr. Barnett and adopted unanimously THAT MR. NELSON'S RESIGNATION BE ACCEPTED WITH REGRET AND THAT HE BE GIVEN A VOTE OF THANKS FOR HIS DEVOTED WORK ON HIS REPORT. The motion to strike out Article II, Section i (c) and Article IV, Section iv (e), AMENDED TO INCLUDE STRIKING OUT "A RATING ADMINISTRATOR" FROM ARTICLE IV, SECTION i, was adopted 8-1.

It was moved by Mr. Meyers and adopted unanimously THAT LEE HENDERSON AND FREDERICK J. ULRICH BE ELECTED AS AREA VICE CHAIRMEN, NORTH BAY AREA, MR. KORMER, WITH HIS APPROVAL, BEING RECALLED.

It was adopted unanimously THAT THE PLAN AMONG CERTAIN AFFILIATES IN CONTRA COSTA COUNTY TO INITIATE A MUTUAL VISITATION PROGRAM BE ENCOURAGED BY THE CCCA, AND THAT THE AREA VICE CHAIRMAN, NORTH BAY AREA, BE INSTRUCTED TO ASSIST IN ANY WAY POSSIBLE.

It was adopted unanimously THAT THE CCCA'S NEXT REGULAR MEETING BE HELD ON FRIDAY, 10 JULY, 8:00 P. M., AT LINCOLN ELEMENTARY SCHOOL, 226 ELEVENTH STREET, OAKLAND.

It was adopted THAT THE CCCA SPONSOR A 1970 USCF SUMMER LEAGUE, TO RUN FROM JUNE TO AUGUST, IN WHICH EACH PARTICIPANT MUST BE A USCF MEMBER, ALL GAMES TO BE RATED BY THE USCF FROM THE CCCA GENERAL FUND; THAT THERE BE NO BOARD FEE FOR THIS LEAGUE, A TROPHY TO THE WINNER TO BE CONTRIBUTED BY THE CHAIRMAN; THAT THE ADOPTION OF RULES FOR THE LEAGUE BE REFERRED TO THE EXECUTIVE BOARD FOR FINAL ACTION.

It was moved by Mr. Trettier THAT THE 20% DISCOUNT ON USCF MEMBERSHIPS THROUGH THE CCCA BE OFFERED ONLY TO CCCA MEMBERS. It was moved by Mr. Meyers TO AMEND THE MOTION BY ADDING "AND THOSE PLAYERS JOINING THE USCF AT A CCCA-SPONSORED TOURNAMENT." The amendment was adopted 6-3, and the motion as amended was adopted 6-1.

Mr. Poschmann, CCCA Championship Administrator, announced the first round pairings of the Championship.

It was moved by Mr. Meyers and adopted unanimously that the meeting adjourn. The Chairman declared the meeting adjourned *sine die* at 11:02 p.m.

A meeting of the Standing Tournament and Club Relations Committee was held on Friday, 3 April 1970, and adopted the following amended

Procedure of Determining the CCCA's Finalist
In the California State Chess Championship

(1) The Committee will award "CCCA California State Chess Championship Qualifying points" to determine its finalist in the California State Chess Championship.

(2) In order to receive Qualifying Points, the player must be a member of the California State Chess Federation (CSCF) at or before the tournament in which the Points are awarded.

(3) Any CCCA affiliate may award Points for any of its weekend tournaments which is USCF-rated, if it announces in advance that Points will be awarded at the tournament and that to qualify for them a player must display his CSCF membership card or join the CSCF at the tournament. Announcement on the tournament bulletin and/or in Chess Voice is sufficient.

(4) The affiliate must then submit to the chairman of the Committee the final scores of every player who is a member of the CSCF, preferably along with the pairing cards of the tournament.

(5) Points will be awarded in the following manner:

(a) In an open, Swiss tournament, all CSCF members will receive their final score in Points;

- (b) In a class, Swiss tournament, all CSCF members playing in the highest division will receive their final score in Points;
- (c) In a round robin tournament, all CSCF members will receive one-half of their final score in Points;
- (d) If a tournament is closed to any players with better than a Class A rating, players will receive 75% of the points they otherwise would have received; if a tournament is closed to any players with better than a Class B rating, no Points will be awarded.
- (e) In the CCCA's USCF Chess Championship of Central California Tournament, all CSCF members will receive triple the number of Points they otherwise would have received.

(6) Points will be totaled on 30 September for the year's California State Chess Championship Finals. The player who has accumulated the highest total of Points, who accepts the responsibility of participating in the Finals, and who seems to the Committee to be able to meet his responsibility of participation and to reflect the highest degree of chess ethics will be declared the CCCA's Finalist.

(7) All expenses incurred from participating in the Finals will be the Finalist's own responsibility. The Finalist, however, will be reimbursed automatically under the following policy of awarding prizes at the Finals: "All ten qualifiers in the State Finals will receive a prize, provided that they play at least five games, on a downward descending scale, but starting with two substantial top prizes. It is the CSCF's belief that anyone who qualifies into this event, even though he may finish last, deserves to get at least some, if not all, of his expenses back."

(8) A running total of Points earned will be published in Chess Voice.

*

A meeting of the Executive Board of the CCCA was held on Friday, 8 May 1970, in the Faculty Dining Room of Lincoln Elementary School, 225 Eleventh Street, Oakland. The meeting was called to order at 10:56 p.m. by the Chairman, Martin E. Morrison.

The Chairman read the call for the meeting: "A meeting of the Executive Board of the CCCA will be held at Lincoln Elementary School, 225 Eleventh Street, Oakland, at 8:00 p.m., Friday, 8 May 1970, for the purpose of adopting rules for the CCCA 1970 USCF Summer League, as referred to the Executive Board for further action, by the CCCA. /s/ Martin E. Morrison, Chairman, CCCA."

The total attendance for the meeting was as follows—present: Martin E. Morrison, Elvin C. Meyers, Richard B. Sherman, Byron D. Delaney; absent: Saleh Mujahed, Leonard P. Trettier, Frank V. Leffman (3).

It was adopted that the minutes of the 3 October 1969 Executive Board meeting be approved as published in CHESS VOICE, the official organ of the CCCA.

The following "Central California Chess Association USCF Summer League Rules" were adopted unanimously: [full text on file].

It was adopted that the meeting adjourn. The Chairman declared the meeting adjourned (sine die) at 11:28 p.m.

*****ACCUMULATED CCCA CALIFORNIA STATE CHESS CHAMPIONSHIP QUALIFYING POINTS*****

All points up to and including the CCCA's Spring Regional One-Day Round Robin Chess Tournament (10 May) have been included. For upcoming CCCA tournaments awarding Qualifying Points, see page 3.

*

Jude F. Acers	12.25	Michael Ewell	3.00	Flyn Penoyer	1.69
Raymond J. Cuneo	5.25	William F. Gray, Jr.	3.00	Alm A. Gullmos	1.50
Garland L. Brinkley	5.00	Jairo C. Gutierrez	3.00	Wayne R. Judd	1.50
William G. Addison	4.00	Takashi Kurosaki	3.00	H. Richard Irwin	1.00
Stephen Kernher	3.75	Benjamin L. Gross	2.25	Bernard Lainson	0.75
Gary L. Pickler	3.50	Kenneth L. Fitzgerald		Stephen Gee	0.50
Philip D. Smith	3.38		2.00	Dennis Myers	0.50
Anthony J. DiMilo	3.00	Wayne P. McClintock	1.69		

*****COMING: THE CCCA'S USCF CHESS CHAMPIONSHIP OF CENTRAL CALIFORNIA TOURNAMENT*****

Watch for this spectacular tournament, to be played 8-9 August. Although the entry fee will be only \$5.00, OVER \$400 IN PRIZES will be given out, divided equally among the classes, so the B's, C's, D's, and E's will have an equal chance at the money. For the higher-rated player, on the other hand, the tournament will be a triple Qualifying Point tournament, so the CCCA's Finalist in the California State Chess Championship this year may well be determined on the basis of this one tournament. Details in the next Chess Voice.

OFFICIAL USCF RATINGS OF CCCA MEMBERS

These are the official USCF ratings of CCCA members through the "Rating Supplement, Spring 1970," published in the March Chess Life and Review. Almost all of the CCCA members through the 5 April assessment period with USCF ratings are listed. Please notify the Editors of any additions or corrections.

MASTER: 2200-2399; EXPERT: 2000-2199; CLASS A: 1800-1999; CLASS B: 1600-1799; CLASS C: 1400-1599; CLASS D: 1200-1399; CLASS E: Below 1200.

* indicates provisional ratings based on 10 to 18 games. Such ratings are less reliable than established ratings. # indicates ratings based on 4 to 9 games. Such ratings are highly unreliable. Players who have played less than 4 games are not listed.

Total number of CCCA members with USCF ratings: 130 (37%).

ALAMEDA CC (4): A Hall 1565*; R Ng 1804; G Weber 1862; M Weber 2031#. BECHTEL CC (4): W Allen 1986; T Cahill 1557; A Hanak 2084*; A Saguissag 1808, COLLEGE OF THE SEQUOIAS CC (1): C Fotias 1547. CONCORD CC (18): D Azevedo 1533*; D Clapp 1739; J Eliason 1368*; J Fosaaen 1921; G Garcia 1840; T Garnett 1148#; G Harcus 123#; R McCollough 1787; M McNewn 1580; J Moore, Jr. 928#; F Olvera, Sr. 1573; R Oylor 1670; M Rivera 1717; F Ulrich 1801; C Vail 1632; J Weiler 1423. DVI CIG (1): R James 1528#. FREMONT CC (1): H Poschmann 1654. HAYWARD CC (11): M Albertson 1478#; E Bartholomew 1613; R Boles 1673; J Friedman 1718; W Goss 1666#; R Holloway 1488#; L Kohl 1559#; L Lopez 1800*; E McNally 1846; M Miller 1508#; E Silva 1497. LIVERMORE CC (7): R Anderson 1576; H Barnett 1696; R Cooper 1383#; K Giallanza 1273#; J Ranellietti 1217#; G Roust 1639; D Smith 1671#. MARIN CC (1): L Post 1811. MARTINEZ CC (2): R Nace 1884*; R Swanson 1695. NEWARK CC (1): H Poschmann 1654. OAKLAND CC (24): T Anderson 1443*; C Barnes 1897*; E Blauner 1672#; A Boyd 1154#; M Crossland 1472*; R Cuneo 1792; D Forthoffer 2038; J Friedman 1718; R Hansen 1865; L Lane 1260#; R Lee 1389; F Luffman 1676#; C Maddigan 1785; E Meyers 1645#; R Mitchell 1889; R Ng 1804; A Ramirez 1724; J Salma 1859; M Sloane 1516#; W Sprague 1850; R Trenberth 1771; S Tressz 1813; R Turney 1517*; G Weber 1862; M Weber 2031#. ORINDA CC (3): A Boyd 1154#; D Campbell 1780; D Smith 1671#. PIEDMONT HILLS HS CC (2): R Gordon 1713*; D Myers 1125#. RICHMOND CC (3): L Baker 1555; D Claudio 1653#; L Trotter 1491. SAN JOSE CC (22): W Adams 1942; T Byrne 1786#; A Critchlow 1821; Francis Crofut 1795#; Fred Crofut 1791; R Delashmitt 1622; W Dickinson 1317#; A Ferreira 1892; A Gardner 1548#; M Gazze 1744; W Goss 1666#; J Iwashita 2050; E Mueller 1878; C O'Brien 1519#; E Osun 2206; F Penoyer 1614; J L Peterson 1540*; L Prink 1789#; H Radke 1922#; K Tullus 2156; P Weiss 1712; S Willett 1325#. SANTA ROSA CC (5): J Evans 1556*; C Falbo 1743; L Henderson 1527#; D Johnson 1682; S Kornher 1955. UC DAVIS CC (10): G Brinkley 2019; D Koutney 957#; F Leffingwell 1560; D Mack 1743; D Olmstead 1659; G Pickler 2108; R Roach 1600; M Shifrine 1836; S Von Ottingen 2088; I York 1606. VALLEJO CC (4): F Harris 1880; L O'Doan 1597; G Raamussen 1869; R Smith 1593#. VISALIA CC (1): C Fotias 1547. WALNUT CREEK CC (6): G Bigelow 1629#; J Evans 1556*; M McNewn 1580; S Mujahed 1628*; C Vail 1632; J Weiler 1423. WESTERN ADDITION CC (1): C Smith 1674.

TOURNAMENT DIRECTION GUIDE AND MANUAL: A PROGRESS REPORT

In progress, to be issued soon, are the first two volumes (installments) of this series, described in detail in the April-May Chess Voice (p. 3) which will be entitled "A Compendium of all Interpretations Made by the FIDE/World Chess Federation/ for the Laws of the Game of Chess' Currently in Force." This project is being undertaken with the co-operation of Fred Cramer, FIDE Vice President for the USA. This work, using materials unavailable elsewhere, will bring together in one place, for the first time, all interpretations made by the FIDE for the Laws of the Game, from 1952, when the current laws were adopted, to the 1969 FIDE Congress, inclusive. These obligatory, often little known regulations, will be found to contain answers to common tournament disputes, previously unsolvable.

Subscriptions to the series must be entered now. We are sorry that no complimentary subscriptions TO ANY PERSON can be given because of the cost of printing. Each volume will cost 50¢, about three volumes being issued per annum. Tournament players and directors: If you want to be the proud possessor of this priceless series, send \$1.00 NOW to reserve the first two volumes. Subscriptions may be cancelled at any time, but we are sure you will find the series so invaluable that you won't be able to part with it. Subscribe now, because the price after publication may be quite a bit higher.

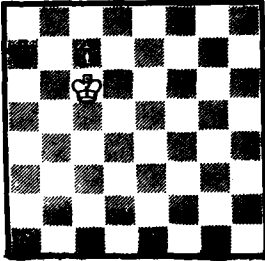
MATING MAZE

By RICHARD LEE, Chess Voice Problems Columnist

No. 69

EASY

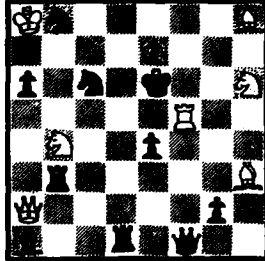
White mates in two.



No. 70

MODERATE

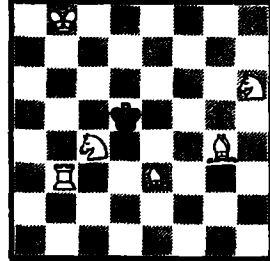
White mates in two.



No. 71

DIFFICULT

White mates in two.



Problem-Solving Contest: June-July

Solutions (the key move, i.e., White's first move, is sufficient) must be received at this magazine's address (on page 2) by 15 June. The winner will be the entrant who submits the correct solution to the most problems; ties will be broken by lot. Even if you submit only one solution, you may win.

The prize for this contest will be Alain C. White's famous Sam Loyd and His Chess Problems, unabridged and corrected reproduction, 471 pp. 744 problems. "Sam Loyd, foremost puzzle creator, was also the father of the American chess problem. As a chess problematist, he won numerous prizes and gained an international reputation. . . . In addition to comments by Alain White, each problem is accompanied by Loyd's explanation of the creation, solution, and theme of his composition. . . . If you are a beginner, you will find Sam Loyd's problems entertaining and instructive for solving your own chess problems more readily and more enjoyably. If you are an expert, Sam Loyd will sharpen your insight for examining problem techniques and composition." /Back cover./

Winner of the April-May Contest

Fifteen sets of solutions were submitted—a new record. Three entrants had all three solutions correct, Garland L. Brinkley, of Sacramento; David P. Lynn, of Saratoga; and Richard R. Roubal, of San Jose. A drawing was held among these three, and Mr. Brinkley is now the proud possessor of P. H. Clarke's 100 Soviet Chess Miniatures.

Solutions to Last Issue's Problems

No. 66: R-KN3. No. 67: QxQBP. No. 68: R-Q7.

GAMES COLUMN

By RICHARD R. SHORMAN, Chess Voice Games Columnist
(CCCA League and Publicity Director)

The following game was played at the CCCA's Spring USCF Class Chess Tournament at Concord (4-5 April). White: Everett L. McNally, of Hayward; Black: Erik D. Osban, of San Jose. Opening: King's Indian Defense. Annotations by Erik D. Osban.

1 P-Q4	N-KB3	14 P-KR3*c	N-N6	27 R-QB2	P-B4	40 Nxr	QxBPch
2 N-KB3	P-KN3	15 R-B2	B-B4	28 NfXP	PxP	41 R-N3	BxP
3 P-K3	B-N2	16 K-R2	BxB	29 R-N2*h	P-B5	42 NxBP*a	Q-N1
4 B-K2	O-O	17 NxB	N-K5	30 N-QN4	N-B4	43 QxBP	B-K4
5 O-O	P-Q3	18 R-K2	QR-K1*d	31 N-B6	Q-B1	44 N-B6ch	K-R1
6 QN-Q2	QN-Q2	19 Q-K1	N-B1	32 N-QN4	R-Q3	45 Nxr	BxRch
7 N-K1*a	P-K4	20 P-QN3	R-Q1*e	33 P-N4*i	N-QN6	46 K-N2	B-K3
8 P-QB3	P-B3	21 P-QB4	KR-K1	34 R/1-R2	P-QB4	47 N-B7	Q-N2ch
9 P-B3	P-Q4	22 N-B2	P-KB4*ff	35 N-B2	PxP	48 N-Q5	N-B8
10 P-KB4*b	PxBP	23 N-Q3	Q-QB2	36 Nxf/N4*j	Q-KB4	49 R-QB2	resigns
11 PxP	Q-K2	24 N/B3-K5	P-N3*g	37 N-R3	R/B-K3		
12 N/2-B3	N-K5	25 P-QN4	N/1-Q3	38 R-N2	NxBP**k		
13 B-Q3	N-N3	26 B-K3	N-N2	39 QxN	RxB*l		

*a: White plays the opening with unusual passivity. Black takes the initiative.

*b: Opens a gaping hole at K4, which is quickly filled with a black knight.

*c: Allows Black to exchange the white-squared bishops. This is positional suicide.

*d: The right rook because White could conceivably open the KB file with P-B5.

*e: Now the other rook belongs on K1 because White intends B-R3.

*f: Necessary. Black must not support the advanced knight on K5 with 20... N/1-Q3 because White replies 21 B-R3 and 22 BxN, dissolving his real weakness, the bad bishop.

*g: Black has the possibility of increasing his advantage with ...P-QM4.

*h: If 29 P-B4, then 29... PxEP; 30 BxP, N-R4; 31 B-B2, N-QN6 wins the QP.

*i: White strikes out desperately.

*j: If 36 PxP, P-N4 will win.

*k: This horrible stroke ruins a well-played game whose score now reads like a headless torso. Move after move Black has built an overwhelming positional advantage which would have given victory after 38...P-B4; 39 N-E5, P-B4; 40 Q-KN1 (or 40 PxP, BxNch; 41 PxB, QxKPch; 42 K-R1, NxBP winning), P-B5; 41 PxP, PxP; 42 RxB, R-B3ch; 43 K-N2, RxB; 44 RxBch, KxB.

The blame for this atrocity lies at the feet of the 40 moves per 1½ hours (Black was short of time), five-round, hectic, weekend Swiss System tournament, which does not allow a master chess player to play like a master. The writer is in favor of improving playing conditions by adopting the four-round Swiss with 40 moves per 2 hours as the best compromise for weekend tournaments, of which the CCCA's USCF Class Chess Tournament at Berkeley (The Washingtonian), 21-22 February, was a bright example. Chess is supposed to be fun, so why not relax with one less round?

*l: If Black captures on Q5, N-B6ch wins the queen.

*m: A move Black saw, but underrated. White wins.

Mr. Osburn's expanded remarks on the five-round Swiss and the Editors' reply will be found in the "Letters to the Editors" section of this issue.—EDS./

*

The following game was independently submitted to the Editors. Mr. Hubbard comments: "A wild, swinging game. Since my opponent was a long way ahead of me in rating and had beaten me before, I tried for a draw by perpetual check after offering a rook sacrifice on move 26. He was so sure of a win, he rejected the draw."—EDS./

Played at the CCCA's Spring USCF Class Chess Tournament at Concord (4-5 April). White: Paul T. Hubbard, of Sacramento; Black: Mark Gasse, of Los Gatos.

Opening: Irregular.

1 P-Q3	P-Q4	10 NxRch	QxN	19 Q-B2	Q-QB4	28 QxPch	K-B1
2 P-KN3	P-KN3	11 BxNch	PxB	20 P-QM4	Q-B6ch	29 Q-K6ch	K-N2
3 B-B2	B-N2	12 Q-Q2	B-N2	21 Q-N2	Q-R5	30 RxBP	Q-B6ch
4 N-QB3	N-KB3	13 Q-N4	R-QN1	22 Q-N3	Q-N4	31 K-B2	R-Q3
5 P-Q4	N-QB3	14 P-KB4	K-Q2	23 P-KB4	B-R1	32 Q-B4	Q-B5ch
6 B-B5	P-K3	15 B-B2	KB-Q1	24 B-K2	P-QB4	33 K-Q2	Q-B6
7 P-K4	PxP	16 0-0-0	K-K1	25 P-B3	PxP	34 B-B5	Q-N7ch
8 NxP	P-KB3	17 Q-B4	P-QR3	26 RxBch?	K-Q2	35 K-Q3	Q-KN7
9 BxN	BxB	18 P-QB3	Q-B4	27 B-K5	Q-B3	36 Q-B6-mate	

Not an expert's game, but good woodpusher fun!!!!—Paul T. Hubbard./

*

Played at the CCCA's Spring USCF Class Chess Tournament at Concord (4-5 April). White: Erik D. Osburn; Black: Jude F. Acers. Opening: Ruy Lopez, Schliemann Counter-gambit. Annotations by Erik D. Osburn.

1 P-K4	P-K4	11 P-Q4	Q-K3	21 P-KB3	B-QB1	31 B-K7ch	BxR
2 N-KB3	N-QB3	12 B-N5*c	P-Q4	22 N-B5*h	RxP	32 RxBch	K-B1
3 B-N5	P-B4	13 BxN	PxB	23 NxPch	K-N2	33 RxBP	P-R7
4 N-B3	PxP	14 Q-R6ch	Q-B2	24 N-B5ch	K-N3	34 B-R6ch	K-B2
5 QNxP	N-B3	15 0-0	P-R5	25 P-N4	RxBP	35 R-R7ch	K-K3
6 N-N3*a	P-K5	16 N-Q2?*d	QxQ	26 NxP*i	PxN	36 R-K7ch	K-Q3
7 Q-E2	Q-K2	17 NxQ	B-KB3	27 BxP	K-B2	37 resigns	
8 BxN	NxB	18 P-KB4*o	0-0*f	28 R/1-K1	B-B1		
9 N-Q4	Q-K4	19 QR-K1?*g	B-N5	29 P-B5	P-B6		
10 N-N3*b	P-QB4	20 N-KN3	KB-N1	30 P-B6	RxB		

*a: A bad move. 6 NxNch is supposed to give White a big advantage. White did not know the opening.

*b: 10 N-B3 attempting to repeat the position might be better.

*c: White finds the only correct plan, which is to blockade the position with his knights.

*d: Practically a slip of the finger, which aborts the whole plan. Fundamentally White must maintain communication between his knights with 16 N-B1 and then

blockade the position with knights posted on KB4 and K2.

Why was this blunder made? Fatigue. A master chess player cannot play master chess in the third game of the day. Such hectic schedules must be eliminated from tournaments in America if we want to encourage excellence in chess. . . .

- *e: An unfortunate necessity.
- *f: 18...K-BE is more accurate.
- *g: A second blunder which makes defense impossible. Correct was 19 P-KR3, giving the poor knight a rest.
- *h: Desperation. However, if 22 P-QN3, PxP; 23 RXP, R-R7, and Black should win.
- *i: A last desperate try, but Black defends accurately.



EDITORS:

. . . I make a plea that concerns all players who enjoy chess and its beauty. I refer to my lost games from this tournament whose scores show the effects of the hectic schedule $\sqrt{7}$. first and third games in "Games Column" of this issue/.

You will realize that my notes are not sour grapes because I have competed in and won many tournaments more important than this one and know very well the defects of the five-round Swiss. The defects are basically the three games per day and the rapid time limit. Luck instead of skill becomes the most important factor in determining the winner. Take, for example, my first place $4\frac{1}{2}$ result at Hayward this year. I obtained three lost positions and succeeded in swindling my opponents each time. It is common for myself and other five-round Swiss System tournament winners to breathe a sigh of relief when the victory is obtained.

You ought to consider that many fine players cannot play good games with scores fit for publication under such hectic conditions. Chess art suffers. I think that determining a winner is somewhat less important than producing beautiful chess. . . .

What about the four-round Swiss for weekend events? Remember, the important thing is the quality of the play and not the results. I hope that the CCCA would sponsor more of these four-round tournaments. The important thing is to eliminate three games per day. That's too much strain on the old grey upstairs. . . .

/s/ Eric D. Osban
USCF Master, San Jose Chess Club

EDITORS' REPLY:

Thank you for taking the time to share your thoughts with us. To begin with, let us state that a five-round Swiss is no easier on the tournament directors than it is on the players! The tournament directors at the tournament in question had to stay at the site until midnight to see all third-round games played off and had to appear at 9:00 a.m. Sunday morning to supervise the completion of adjourned games from the first three rounds.

The CCCA's USCF Class Chess Tournament at Berkeley (The Washingtonian), 21-22 February, which you cite in your annotations as an example of an outstanding tournament, one with four rounds and a slow (40/2) time limit, presented a number of organizational problems, especially in the way of too many adjourned games in the top division and too long a playing period (four hours per round), which make that setup as unsuitable as the tournaments with five rounds and a fast time limit. One must also remember that the Class B, C, D, and E players find a 40/2 limit too slow. The experience, then, indicates that both five-round tournaments and those with a slow time limit and long playing rounds have serious deficiencies.

The CCCA, therefore, in two of its summer tournaments (in July at San Jose and in September at Concord) will experiment with a compromise: a four-round Swiss with a time limit not too slow and a playing period not too long (40/1 $\frac{1}{2}$). You yourself indicate that the four-round setup is more important than the slower time limit, and this limit is only nine seconds faster per move than that used in the US and National Opens.

We shall closely observe the players' reactions to these innovations, and we encourage other readers to submit their thoughts. The CCCA is pledged to serve the chess players of Central California, and we can only satisfy them if they make clear to us their desires.

CCCA AFFILIATE DIRECTORY

(Current number of CCCA affiliates: 34; members: 374.)

For information on affiliation to the CCCA and its benefits, contact the Editors (address and telephone number on page 2). THE FOLLOWING ARE NOT MAILING ADDRESSES.

ALAMEDA CC: Mon., 7-11:30 p.m.; McKinley Pk. Rec. Cen., Walnut St. and Buena Vista Ave., Alameda. ALAMEDA NAS CC: Alameda NAS, Alameda. ANTIPOCH CC: Thur. nights; Conf. Rm., Cen. Valley Nat. Bk., 2516 Sommersville Rd., Antioch. BECHTEL CC: Wed., 7:30 p.m.; 11th Floor Conf. Rm., 50 Beale St., San Francisco. BERKELEY LIVE OAK CC: Mon., 7-10:30 p.m.; Live Oak Rec. Cen., 1301 Shattuck Ave., Berkeley. BERKELEY SEN. CEN. CC: Tues., 9 a.m.-12 m.; Sen. Cen. of Berkeley, 1849 University Ave., Berkeley. BERKELEY YMCA CC: Wed., 7 p.m.; Foyer, Palm Rm., Berkeley Cen. YMCA, 2001 Allston Wy., Berkeley. CAP. CITY CC: Wed., 7:30-11 p.m.; Clunie Clubhouse, Alhambra and "F" Sts., Sacramento. CATERPILLAR CC: Thur., 7-10:30 p.m.; Cafeteria, Caterpillar Tractor Co. Plant, 800 Davis St., San Leandro. COL. OF THE SEQUOIAS CC: Tues., 12 m.-1 p.m.; Rm. 338, Col. of the Sequoias, Visalia. CONCORD CC: Fri., 7:30-11:30 p.m.; Concord Sen. Citizens Cen., 2974 Salvio St., Concord. DEUEL VOCATIONAL INST. CHESS INT. GROUP: Only for inmates of the Deuel Vocational Inst., Tracy. EVERYMAN ATHLETIC CLUB CC: Tues. nights; Del Webb Townhouse, 2220 Tulare St., Fresno. FREMONT CC: Thur., 7-11 p.m.; Westridge Pk. Rec. Cen., 36200 Fremont Blvd., Fremont. HAYWARD CC: Mon and Fri., 7:30-12 p.m.; Hayward Art and Science Cen., 2058 "D" St., Hayward. LIVERMORE CC: 1st and 3rd Fri., 7:30-12 p.m.; Old Lib., Carnegie Bldg., Fourth and "J" Sts., Livermore. MARIN CC: Tues. even.; London Arms, 81 Red Hill Ave., San Anselmo. MARTINEZ CC: Mon., 7:30 p.m.; 1111 Ferry St., Martinez. MONTEREY PEN. CC: Thur., 7:30 p.m.; Casa Alvarado Chess Cen., 494 Alvarado St., Monterey. NEWARK CC: Tues., 7-10:30 p.m.; Newark Com. Cen., 35501 Cedar Blvd., Newark. OAKLAND CC: Fri., 7-11:30 p.m.; Multipurpose Rm., Lincoln Elem. Sch., 225 Eleventh St., Oakland. ORINDA CC: Thur., 7:30 p.m.; Orinda Com. Ch., 10 Irwin Wy., Orinda Vil., Orinda. PIEDMONT HILLS H. S. CC: Mon.-Fri., 2:30-4 p.m.; Rm. E-14, Piedmont Hills H. S., 1377 Piedmont Rd., San Jose. RICHMOND CC: Fri., 7 p.m.; Our Lady of Mercy Ch., 301 W. Richmond Ave., Pt. Richmond. ST. MARY'S COL. CC: St. Mary's Col. of Calif., Moraga. SAN JOSE CC: Wed., 7:30 p.m.; San Jose Cen. YMCA, 1717 The Alameda, San Jose. SAN QUENTIN CC: Only for inmates of the Calif. State Prison, San Quentin. SANTA ROSA CC: Fri., 7-10 p.m.; Santa Rosa Jr. Col., 1501 Mendocino Ave., Santa Rosa. UC CC: Fri. afternoon; Games Rm., Plaza Level, Stud. Cen., Univ. of Calif., Berkeley. UC DAVIS CC: Mon., 7-11 p.m.; Games Rm., Mem. Union, Univ. of Calif., Davis. VALLEJO CC: Fri., 7:30 p.m.; Vallejo Com. Cen. Bldg., 225 Amador St., Vallejo. VISALIA CC: Fri., 7:30 p.m.; Rec. Pk. Bldg., 345 No. Jacob St., Visalia. WALNUT CREEK CC: Tues., 7 p.m.; Sen. Citizens Hospitality House, 1385 Civic Dr., Walnut Creek. WESTERN ADD. CC: Tues., 7:30 p.m.; Family Serv. Agcy., 1010 Gough St., Cath. Hill, San Francisco.

CCCA CHAMPIONSHIP: INTERIM REPORT

By HANS POSCHMANN, Championship Administrator

The 1970 CCCA Championship Tournament has begun play with fourteen entries engaged in a knock-out tournament. Each player represents a CCCA affiliate. The winner will receive the title of CCCA Champion and a magnificent large plaque and trophy designed by Hans Poschmann. Results so far have: Everett L. McNally, of the Hayward Chess Club, defeating Frederick J. Ulrich, of the Concord Chess Club; Stephen Kornher, of the Santa Rosa Chess Club, defeating Ben Jansen, of the Fremont Chess Club; D. Stone, of the Orinda Chess Club, defeating Frank M. Olvera, Sr., of the Antioch Chess Club; David J. Forthoffer, of the Oakland Chess Club, defeating Charles Comstock, of the Deuel Vocational Institution Chess Interest Group; William Orr, of the Newark Chess Club, defeating Dennis Claudio, of the Richmond Chess Club, (by forfeit); R. Lapice, of the Western Addition Chess Club, defeating Michael Weber, of the Alameda Chess Club (by forfeit). James B. Shearer, of the Livermore Chess Club, and Sergius Von Ottingen, of the UC Davis Chess Club, drew in the first round and will play off the result later.

BOOK NOTES

CCCA Publication No. 3, now in its second edition, is still available. It is a reprint of a Chess Voice article, "Interpretations Made by the Permanent Commission of the FIDE /World Chess Federation/ for the Laws of the Game," translated by Martin E. Morrison, Chess Voice Editor and USCF Director. The second edition contains References to the FIDE Laws Article Numbers. Cost: 20¢ per copy from the Editors (address and telephone number on page 2).

The above will be published in the British Chess Federation Yearbook of Chess 1970/1971, which also contains other interesting items for chess organizers, tournament results, and everything pertaining to British chess. A steal at 8½ postfree. Order from George H. Simmons, Ed., 9a Grand Parade, St. Leonards-on-Sea, Sussex, G. B.

THE OAKLAND CHESS CLUB'S THIRD ANNUAL FOUR-MAN SECTIONAL CHESS TOURNAMENT (22 MARCH) DREW THE LARGEST PARTICIPATION YET FOR SUCH A TOURNAMENT. In addition, 10 of the 12 sections were composed of USCF members. Pictured are (l. to r.): Richard Anderson, Alan Yingling, Harry Overholtzer, winner of USCF Section 7, Edward S. Yeung, and David Bennett. Further information on the tournament will be found in the "News" Section of this issue. (Photograph courtesy of Richard R. Shorman, CCCA League and Publicity Director.)



AWARDS PRESENTATION: For the CCCA's 1969-70 League and 1970 Championship will take place at the CCCA's 10 July meeting. All involved players are invited. Photographs will be taken.

NEXT CCCA GENERAL MEMBERSHIP MEETING: Friday, 10 July, 8:00 p.m., Lincoln Elementary School, 225 Eleventh Street, Oakland. Every member of the CCCA, i.e., everyone who is certified by the appropriate officer of a chess club or organization affiliated to the CCCA, listed on p. 15/ to be a member or officer of the affiliate, has full privileges of debate and voting. Nonmembers are welcome.

NEXT USCF TOURNAMENTS OF THE CCCA AND ITS AFFILIATES: 6-7 June, Livermore Open; 27-28 June, Monterey International Open; 18-19 July, CCCA's USCF Class Chess Tournament at San Jose. See page 3 for more details.

CHESS CLOCKS: Lowest price in the US; no waiting months for overseas delivery. RHB Extra, brown plastic case, 6" x 3" x 1 1/4"; two-year guarantee from manufacturer; "the world standard for dependable quality and durability at a moderate price" USCF. ONLY \$12.50.



Immediate pickup from the CCCA Treasurer or League Director Frank V. Lefman (addresses on p. 2) or by mail (add 75¢ postage and insurance).

ALL CHESS PLAYERS ARE STRONGLY URGED TO BECOME MEMBERS OF THE USCF (UNITED STATES CHESS FEDERATION) AND THE CSCF (CALIFORNIA STATE CHESS FEDERATION).

POSTMASTER: SEND P. O. D. FORM 3579 TO:

Editors
Central California
Chess Association
Post Office Box 1622
Oakland, California 94604
Telephone: (415) 582-1973

NEXT AFFILIATE ASSESSMENTS DUE: 5 June and are delinquent thereafter. Appropriate officers of the affiliates should send 20¢ per club member, along with a list of the names and addresses of the affiliate's members. "A fine of \$1 per month be levied against any affiliate which pays its assessment more than two weeks late without a valid excuse accepted by the Treasurer."



USCF MEMBERSHIPS AT A 20% DISCOUNT, ONLY FOR CCCA MEMBERS OR THOSE PLAYERS JOINING THE USCF AT A CCCA-SPONSORED TOURNAMENT: \$4 (under 21), \$8 (21 and over) per annum, new or renewal. Others may join at the regular rate of \$5 or \$10, respectively. Send memberships to the CCCA Treasurer. Benefits include a monthly Chess Life & Review subscription, eligibility for a USCF (national) rating, and discounts on chess equipment.

CSCF MEMBERSHIPS: \$2.50 (under 21), \$5 (21 and over) per annum from CSCF Treasurer Dr. Ralph Hultgreen, 1501 LeRoy Avenue, Berkeley, CA 94708. Benefits include a bimonthly California Chess Reporter subscription, use of a CSCF Rating Card (to keep track of your approximate updated USCF rating), and eligibility for Qualifying Points toward becoming the CCCA's Finalist in the California State Chess Championship.