

89 Chess Clubs
and Organizations

TOTAL CIRCULATION: 704
524 Chess Players

91 Chess Publications
and Libraries

THE CENTRAL CALIFORNIA CHESS VOICE



CENTRAL CALIFORNIA'S CHESS MAGAZINE
and
OFFICIAL ORGAN
of the
CENTRAL CALIFORNIA CHESS ASSOCIATION
(An Authorized Affiliate
of the United States Chess Federation)

MARTIN E. MORRISON
Editors
. ELWIN C. MEYERS

February-March 1971
Whole No. 19

JUDE F. ACERS NATIONWIDE
SIMULTANEOUS CHESS EXHIBITION
TOUR IS LAUNCHED WITH A
SPECIAL, EXCLUSIVE TOUR
FOR CCCA AFFILIATES.
(For schedule and
details, see page
6.)



JUDE

ACERS

is

COMING

Editors
Central California
Chess Association
Post Office Box 1622
Oakland, California 94604
Telephone: (415) 582-1973

Send change of address notices, undeliverable copies, orders for subscriptions, and other mail items to the magazine's mailing address above. POSTMASTER: SEND P. O. D. FORM 3579 TO THE MAGAZINE'S MAILING ADDRESS ABOVE.

Chess Voice is published bimonthly. EVERY MEMBER OF THE CCCA, I.E., EVERY PERSON WHO IS CERTIFIED BY THE APPROPRIATE OFFICER OF A CHESS CLUB OR ORGANIZATION AFFILIATED TO THE CCCA (listed on page 15) TO BE A MEMBER OR OFFICER OF THE AFFILIATE, receives mailed to his home a Chess Voice subscription, paid for in connexion with the payment of the affiliate's CCCA assessments in a distinct, voluntary, and independent act on the part of each individual member, the relation of subscriber being clearly understood and fully agreed to. Known office of publication (not the magazine's mailing address): Campus Bancroft Building, Room 208, 2440 Bancroft Way, Berkeley, California 94704. Second-class postage paid at Berkeley, California.

The opinions expressed in Chess Voice are those of the Editors or of the respective contributors. They do not necessarily constitute an official policy of the CCCA or any of its affiliates.

NONMEMBER SUBSCRIPTIONS: \$2.00 per annum.

ADVERTISEMENTS: 5¢ per word per issue on any subject (classified advertisements), \$5.00 per eighth page per issue, \$20.00 per insert per issue (this cost is more than one cent cheaper per page for mailing tournament circulars, etc., than postage costs alone).

CCCA OFFICERS AND OFFICIALS

CHAIRMAN	MARTIN E. MORRISON
Post Office Box 1622, Oakland, CA 94604	582-1973
SECRETARY	SALEH MUJAHED
Post Office Box 1622, Oakland, CA 94604	(582-1973)
TREASURER	LEONARD F. TROTTIER
5315 MacDonal Avenue, El Cerrito, CA 94530	233-1595
LEAGUE DIRECTORS	HAROLD L. BARNETT
677 Caliente Drive, Livermore, CA 94550	447-4588
3517 Jordan Road, Oakland, CA 94619	FRANK V. LEFFMAN
EDITORS	531-4804
Post Office Box 1622, Oakland, CA 94604	MARTIN E. MORRISON
	582-1973
Post Office Box 1622, Oakland, CA 94604	ELWIN C. MEYERS
PUBLICITY DIRECTOR	(582-1973)
	RICHARD R. SHORMAN
	782-5029

CCCA Championship Administrator: Hans Poschmann.

Standing Committees. Clock: Leonard F. Trottier, Chairman, Martin E. Morrison. Tournament and Club Relations: Martin E. Morrison, Chairman, Elwin C. Meyers (Standing Tournament Subcommittee); Harold L. Barnett, Everett L. McNally (Club Coördinator).

CSCF Directors: Martin E. Morrison (At-large, Northern California; Member, Standing State Tournament Calendar Committee and Standing Tournament Committee, Northern Section), Gunnar H. Rasmussen (Redwood Empire Area; Chairman, Board of Directors).

USCF Directors: William T. Adams, William Kennedy, Elwin C. Meyers, Martin E. Morrison (National Chairman, Nominating Committee; Member, Tournament Director Certification Committee and Chairman, USCF Official Tournament Direction Guide Subcommittee; Member, Junior Chess Committee), E. H. Mueller, Frank M. Olvera, Sr., Robert L. Oyer, Gunnar H. Rasmussen, Sergius von Oettingen.

Members should feel free to contact their officers and officials regarding any aspect of chess business. They will be happy to serve you. Of course, additional help is always needed and welcomed. Offer your help to your CCCA.

***THE COMPLETE OFFICIAL STATE TOURNAMENT CALENDAR
FOR NORTHERN AND CENTRAL CALIFORNIA
OFFICIALLY SANCTIONED BY THE CALIFORNIA STATE CHESS FEDERATION***

Chess Voice is designated to publish "The Complete Official State Tournament Calendar For Northern and Central California, Officially Sanctioned by the California State Chess Federation" and has charge of collecting data for the calendar, "to avoid competition, publicize, and promote attendance." TOURNAMENT ORGANIZERS SHOULD SUBMIT TO THE EDITORS AS SOON AS POSSIBLE TENTATIVE OR DEFINITE TOURNAMENT DATES FOR INCLUSION IN THE OFFICIAL STATE TOURNAMENT CALENDAR. We cannot be responsible for including tournaments of which we have not been notified. Chess Voice is also designated to "coordinate tournament dates." In carrying out this function, the Editors, in case of date conflicts, will contact the organizers involved in an effort to find a resolution agreeable to all parties. In general, precedence will be given to established annual tournaments and those of which we were notified first. USCF tournaments of the CCCA and its affiliates are capitalized. At these tournaments CCCA California State Chess Championship Qualifying Points will be awarded. To obtain them, a player must produce an unexpired CSCF membership card or join the CSCF upon registration at the tournament.

*

22 JAN. & 5 FOL. FRIS.	BERKELEY CC'S MASTER/EXPERT OPEN (no Qual. Pts.)	USCF	BERKELEY
29 JAN. & 5 FOL. FRIS.	BERKELEY CC'S AMATEUR OPEN (no Qual. Pts.)	USCF & UNR.	BERKELEY
12-14 FEB.	CCCA'S REGIONAL GOLDEN BEAR PREMIER CHAMPIONSHIP	USCF, CSCF	BERKELEY
13-14 FEB.	CCCA'S REGIONAL GOLDEN BEAR CLASS CHAMPIONSHIPS	USCF	BERKELEY
20-21 FEB.	MECHANICS' INST. CC TOURNAMENT	USCF	SAN FRANCISCO
27-28 Feb.	1971 USCF/CFNC State Qualifier, 1971 CFNC Championships, No. Calif. Jr. Chess Championship Playoffs	CFNC (& USCF)	STANFORD
7-12 Mar.	National Open (A Nat. T.)	USCF	Sparks
12 MAR.	OAKLAND CC'S 4TH ANN. 4-MAN SECTIONAL CHESS T.	USCF OR CFNC	OAKLAND
14-20 Mar.	Louis Statham Masters and Experts Tourney	USCF	Lone Pine
19 MAR. & 6 FOL. FRIS.	BERKELEY CC'S OPEN CHAMPIONSHIPS (no Qual. Pts.)	USCF & UNR.	BERKELEY
27-28 MAR.	THE 1971 GRAND PRIX CLASS CHAMPIONSHIPS (USCF REG. VIII)	USCF	FRESNO
Apr. or May	No.-So. Match	USCF/ CSCF?	?
2-4 APR.	7TH ANN. PRE-EASTER VISALIA AMATEUR OPEN CHESS T.	USCF	VISALIA
17-18 Apr.?	5th Ann. Peninsula Open	CFNC (& USCF)	Sunnyvale
14-15 MAY?	?SACRAMENTO CITY CHAMPIONSHIP	USCF	SACRAMENTO
22 MAY	?DVI'S USCF SEMI-OPEN/INVITATIONAL T.	USCF	TRACY
29-30 MAY	CCCA'S USCF REGIONAL CLASS CHESS T. AT SAN JOSE	USCF	SAN JOSE
5-6 JE.	?LIVERMORE OPEN	USCF	LIVERMORE
18 JE. & 9 FOL. FRIS.	BERKELEY CC'S CLASS ROUND ROBIN (no Qual. Pts.)	USCF & UNR.	BERKELEY
26-27 JE.?	7TH ANN. MONTEREY INT. OPEN CHESS T.	USCF	MONTEREY
3-5 JUL.	8TH ANN. ARTHUR B. STAMER MEMORIAL T.	USCF	SAN FRANCISCO
4 Jul.	5th Open Air Chess Festival	Unr.	San Bruno
24-25 JUL.	CCCA'S 3RD ANN. ADULT & JR. USCF REGIONAL CHESS CHAMPIONSHIP OF CEN. CALIF. (triple Qual. Pts.)	USCF	HAYWARD
29 Jul.-5 Aug.?	US Jr. Open (A Nat. T.)	USCF	Pacific Coast?
8-20 Aug.	US Open Chess Championship (A Nat. T.)	USCF	Ventura
14-15 Aug.	Oakland CC's 8th Ann. Summer T.	CFNC?	Oakland
21-22 Aug.	73rd Ann. Chabot Open Chess Championship T.	CFNC (& USCF)	Mt. Eden
4-6 SEPT.	CALIF. OPEN	USCF & CSCF	MONTEREY?
11-12 SEPT.	CCCA'S USCF REGIONAL CLASS CHESS T. AT SANTA CRUZ	USCF	SANTA CRUZ
19 Sept.	9th Ann. Scholarship Chess Festival	Unr.	Hayward
25-26 Sept.?	8th Ann. 1971 Sunnyvale Open Chess Championship T. & 1971 Santa Clara Open Jr. Chess Championship T.	CFNC (& USCF)	Sunnyvale

NEWS

Forthoffer, Barnes Top A's at Continental Open

Two CCA members walked away with first and second prizes in their class at the annual Continental Open Chess Championship, held in Los Angeles on 23-25 October. David J. Forthoffer (l. in photograph) took top honors in the "A" Division for a \$200 cash prize and trophy. Craig N. Barnes (r.), also of Berkeley, shared the \$100 second prize in the same division with a tied player. The tournament drew 180 players, including seven masters and grandmasters, and was directed by Gordon S. Barrett, CSCF Director and editor of Terrachess, and William Goichberg, active USCF promoter and director of the Continental Chess Association.



*

Cross Victorious in Berkeley CC's USCF Random

Steven Cross, a USCF Expert, won a clear 6-0 first place in the Berkeley Chess Club's Six-Round Random, a USCF-rated event held during October, November, and December. Following at 5-1 was Steve Dinerstein, and at 4½-1½, Edward S. Yeung.

Heading an unrated section was Dinis G. M. Santos, also with 6-0, followed by Ray Segal (5-1) and R. Carl Shiflett (4½-1½).

The tournament, in which players were paired at random for the six out of ten possible nights of their choice, was directed by Martin E. Morrison, CCA Chairman and Editor and Member of the USCF Tournament Director Certification Committee. Sixty-five players participated.

The club is now engaged in a Master/Expert Open (USCF) and an Amateur Open (USCF and unrated). The Berkeley Chess Club's Open Championship (USCF and unrated) will begin on 19 March and will qualify four players into round robin finals.

*

Twelve Win at CCA Regional Round Robin

The CCA sponsored its annual Regional One-Day Round Robin Chess Tournament on Saturday, 2 January at the Walnut Creek Recreation Center, drawing 48 players. Three rounds were played in four-man sections, arranged according to relative strengths. The following players won in their respective sections: (1) Charles A. Maddigan, (2) Mel Rappaport and Dean Hall, (3) Flynn L. Penoyer, Gary Kobliska, Robert W. Howard, and Donald Stone, (4) Frederick J. Ulrich, (5) John L. Peterson and Zeev Ben Porat, (6) Steve Dinerstein, (7) Saleh Mujahed and R. Carl Shiflett, (8) Kevin Olwell, (9) Gordon Bigelow, (10) Ernest J. Rosenthal and Michael Devitt, (11) Stephen Felgar, (12) Keith Guertner and Lawrence Fair.

*

Clapp, Smith Top Oakland Amateur

On 19-20 the Oakland Chess Club's Fifth Annual San Francisco Bay Area Amateur Open Chess Championship was held at the CCA Oakland Lodge under the direction of Charles A. Maddigan. Winners were Donald W. Clapp, of Lafayette, and David Smith, of Minnesota, both of whom entered the tournament with Class B ratings. They each scored 4½-½, to split the \$45 overall prize. Anthony J. DiMilo won the A prize of \$20 with a 4-1 tally, and Robert R. Trenberth, making a return to chess, won the B prize of \$20 with a 3½-1½ result. Richard S. Lee and Marcos B. Costa both scored 3 points, thus winning \$10 each. Thirty players participated.

THE STATE CHAMPIONSHIP
By MICHAEL R. EWELL, CCCA Qualifier

Jude F. Acers, the CCCA Qualifier to the 1970 California State Chess Championship, withdrew two weeks in advance of the Championship for personal reasons. Michael R. Ewell, as the player with the second highest total of CCCA Qualifying Points, then became the CCCA Qualifier. The CCCA's thanks must go to Mr. Ewell for stepping in at the last minute and taking valuable time from his job to complete his full schedule of championship games.—EDS.7

The State Championship had its problems this year as usual, but all in all I think that it turned out very well (with the exception of my poor showing). The main problem was lack of a definite playing schedule for the preliminary rounds, compounded by the lateness of mailing out the playing schedule. For the future I would suggest one weekend for the preliminary rounds and a three-day weekend for the final five rounds. This would eliminate having to take off three days from work and would allow for more advance preparation. The original schedule called for Sunday through Wednesday, but was changed later to eliminate Wednesday.

The final rounds went smoothly, thanks to Mr. Raymond J. Conway, Director of the Mechanics' Institute Chess Club, who did everything he could to make playing conditions as good as possible. He also took over the duties of tournament director, including working on his day off. I think that Mr. Conway should be paid the TD's fee, as the scheduled TD could not make it and no one besides Mr. Conway acted as TD. During the preliminary rounds, Mr. Conway provided private rooms for the games played at MI.

One point worth noting was that this year there were no forfeits. That is an improvement over last year. Also, I think that the prize fund should be announced prior to the tournament, not after. I do not know of another tournament where the prize distribution is made after the tournament is over!

Playing in the State Championship for the first time is quite an experience. I learned a few new points and remembered some old lessons (time control, advance preparation, etc.). I wish to thank the CCCA for the opportunity to play in this tournament.

Final California State Championship Crosstable

		1	2	3	4	5	6	7	8	9	10					
1 Charles Henin	S 2193	X 0	1/2	1	1/2	1	1/2	1	1/2	6	-3	4-1-4	1-2	\$187.50		
2 Dennis Fritzing	N 2264	1	X 1/2	0	1	1/2	1/2	1/2	1	6	-3	4-1-4	1-2	187.50		
3 Julius Loftason	S 2160	1/2	1	X 1/2	0	1/2	1/2	1	1	5 1/2	-3 1/2	3-1-5	3	65.00		
4 Harry Mayer	N 2156	0	1	1/2	X 0	1/2	1/2	1	1	5	-4	3-2-4	4-5	30.00		
5 Ross Stoutenborough	S 2288	0	0	1	1	X 1/2	1	1	0	5	-4	4-3-2	4-5	30.00		
6 Donald Dean	N 2086	1/2	0	1/2	1/2	1	X 0	1/2	1	4 1/2	-4 1/2	2-2-5	6-7	22.50		
7 Erik D. Osburn	N 2184	0	1/2	1/2	1/2	0	1	X 1/2	1	4 1/2	-4 1/2	2-2-5	6-7	22.50		
8 Kim Commons	S 2212	1/2	1/2	0	1/2	0	1/2	1/2	X 0	3 1/2	-5 1/2	1-3-5	8	20.00		
9 William Bragg	S 1967	0	1/2	0	0	1	0	1/2	1	X 0	3	-6	2-5-2	9	20.00	
10 Michael R. Ewell	N 2007	1/2	0	0	0	1/2	0	0	0	1	X	2	-7	1-6-2	10	15.00
Average or Total		2152								4 1/2	-4 1/2			\$800.00		

ROUND 8 OF THE STATE CHESS had CCCA Qualifier R. Ewell (far r., 1969 State Champion), soon to be Co-Champion of the Championship of the Champion-27-30 December Institute Chess Club. The here in time drew the game. are (l. to r.) Nieder, and way, Director of ing Tournament tograph by CCCA Editor.)



CALIFORNIA CHAMPIONSHIP fier Michael seated) playing pion Charles become the 1970 The final rounds ship were held at the Mechanics' Club, San Francisco, shown trouble, later Watching closely Jean Hope, David Raymond J. Conway the club and acting Director. (Photo-Martin E. Morrison,

JUDE F. ACERS EXCLUSIVE CCCA SIMULTANEOUS EXHIBITION TOUR

USCF Master Jude F. Acers, world record holder for simultaneous chess exhibition play will launch his Nationwide Simultaneous Exhibition Tour with a special, exclusive tour for CCCA affiliates. Mr. Acers is perhaps the fastest-rising chess player in the United States today. So illustrious has his career become that feature stories have appeared in Sports Illustrated and the New York Times concerning him. Many highly-placed players have predicted his advancement to the International Master title in the near future. At age 17, Mr. Acers was a rated chess master, the youngest ever in the southern United States, and was Chess Champion of Louisiana State. At 22, he captured the world record for a simultaneous exhibition by playing 114 games—winning them all in 8½ hours. Now at 28, he recently drew a match with International Grandmaster Walter S. Browne, 21, of Australia, at Berkeley. One of the world's most active exhibitors, the Master gave almost 100 simultaneous exhibitions in 1970 alone.

Mr. Acers's Nationwide Tour will take him to prisons, hospitals, orphanages, public institutions, and chess clubs in the Western US and Mexico (1 April-31 May), the Southwestern and Southern US (1 June-20 August), and the Northeastern US (15 September-20 December). Clubs interested in hosting an exhibition by Mr. Acers should write his national tour director, Lloyd A. Kavich, 570 Union Street, Apartment 301, San Francisco, CA 94133. Mr. Acers will report directly to Chess Voice on the progress of his Nationwide Tour.

The following is a complete listing of Mr. Acers's CCCA Simultaneous Exhibition Tour. Board fees to play range from free to \$1.00; spectators free.

- M 7 Dec. 8:00 p.m. ALAMEDA CC, McKinley Pk. Rec. Cen., Walnut St. & Buena Vista Ave., Alameda
- M 11 Jan. 7:30 p.m. MARTINEZ CC, Martinez Hacienda, 1111 Ferry St., Martinez
- F 15 Jan. 7:30 p.m. BERKELEY CC, Palm Rm., Berkeley Cen. YMCA, 2001 Allston Wy., Berkeley
- SU 17 Jan. DEUEL VOCATIONAL INSTITUTION CHESS INT. GROUP, Deuel Vocational Institution, So. Kasson Rd., Tracy
- F 29 Jan. 8:00 p.m. OAKLAND CC, Multipurpose Rm., Lincoln Elem. School, 225 Eleventh St., Oakland
- M 1 Feb. 8:00 p.m. ALAMEDA CC, Washington Jr. H. S., Santa Clara Ave. & Ninth St., Alameda
- F 5 Feb. 1:00 p.m. BERKELEY CC, Tan Oak Rm., 4th Flr., Student Union Bldg., Univ. of Calif., Telegraph Ave. and Bancroft Wy., Berkeley
- TH 11 Feb. 7:00 p.m. FREMONT CC, Westridge Pk. Comm. Cen., 36200 Fremont Blvd., Fremont
- F 12 Feb. 7:00 p.m. SANTA ROSA CC, Santa Rosa Jr. Col., 1501 Mendocino Ave., Santa Rosa
- TH 18 Feb. 7:30 p.m. ORINDA CC, St. Stephens Episcopal Ch., St. Stephens Dr. & Via Las Cruces, Orinda
- F 19 Feb. 7:00 p.m. CHABOT COL. CC, Rm. 830, Chabot Col, 25555 Hesperian Blvd., Mt. Eden (Hayward)
- F 26 Feb. 8:00 p.m. CONCORD CC, Concord Sen. Citizens Cen., 2974 Salvio St., Concord
- F 5 Mar. 8:00 p.m. LIVERMORE CC, Old Lib., Carnegie Bldg., Fourth & "J" Sts., Livermore
- TU 9 Mar. 8:00 p.m. WALNUT CREEK CC, Sen. Citizens Hospitality House, 1385 Civic Dr., Walnut Creek
- W 17 Mar. 8:00 p.m. PLEASANT HILL CC, E-W House, Pleasant Hill Pk. & Rec. Cen., 147 Gregory Ln., Pleasant Hill.
- F 19 Mar. 7:30 p.m. VALLEJO CC, Vallejo Comm. Cen. Bldg., 225 Amador St., Vallejo
- W 24 Mar. 3:00 p.m. PIEDMONT HILL H. S. CC, Piedmont Hills H. S., 1377 Piedmond, San Jose
- W 24 Mar. 7:30 p.m. SAN JOSE CC, San Jose Cen. YMCA, 1717 The Alameda, San Jose
- M 29 Mar. 7:30 p.m. MARTINEZ CC, Multipurpose Rm., Alhambra H. S., Martinez

THE MOST INCREDIBLE GAMES EVER PLAYED
By JUDE F. ACERS, USCF Master, San Francisco

[The following games are used for analysis in the lectures Mr. Acers gives in conjunction with his simultaneous exhibitions. They are given here for handy reference.—EDS.]

I. White: Lazard; Black: Gibaud. Played in Paris, 1903. Opening: Queen's Pawn.

1 P-Q4 N-KB3 3 PxP N-N5 4 P-KR3 N-K6! 5 resigns
2 N-Q2 P-K4

II. Philidor's Defense (legal mate).

1 P-K4 P-K4 4 N-B3 P-KR3? 6 PxP NxP? 8 BxPch K-K2
2 N-KB3 P-Q3 5 B-QB4 B-N5 7 NxN BxQ 9 N-Q5 mate
3 P-Q4 N-QB3

III. Scholar's Mate.

1 P-K4 P-K4 2 B-QB4 N-QB3 3 Q-R5? N-B3? 4 QxP mate

IV. Fool's Mate.

1 P-KB3? P-K4 2 P-KN4? Q-R5 mate

V. White: Jude F. Acers; Black: A. Nelson. Played at Utah State Prison, 11-board exhibition, 11 July 1970. Opening: Philidor's Defense.

1 P-K4 P-K4 4 B-QB4 P-QB3 7 BxPch! NxN 9 B-Q2 Q-N3
2 N-KB3 P-Q3 5 N-N5! N-R3 8 N-K6 Q-R4ch 10 P-R5 resigns
3 P-Q4 N-Q2 6 P-QR4 B-K2

VI. White: Jude F. Acers; Black: C. William Jones III. USCF-rated match, Redwood City, 23 October 1970. Opening: Sicilian Defense.

1 P-K4 P-QB4 7 B-QN5 P-K3 13 RxB!!! QxR 19 QxRPch K-B3
2 N-KB3 N-KB3 8 B-K3 PxP 14 N-K4! Q-B2 20 B-Q4ch P-K4
3 N-B3 N-B3 9 NxP Q-B2 15 B-B5! B-B3 21 B-Q3 N-B5
4 P-Q4 P-Q4 10 P-B3 B-Q2 16 NxPch! PxN 22 Q-R6ch K-B2
5 KPxP KNxP 11 0-0-0 B-Q3 17 QxKBP N-Q4 23 B-B4ch resigns
6 B-QB4 N-N3? 12 NxN PxN 18 QxRch K-B2

VII. White: Horst Mohrmann; Black: Jude F. Acers. Played at San Jose, 24 October 1970. Opening: Gruenfeld Indian Defense.

1 P-Q4 N-KB3 8 P-K4 B-N5! 15 Q-Q3 N-N5 22 P-KN4 Q-B3ch
2 P-QB4 P-KN3 9 N-K5?! B-K3 16 Q-Q2 N/5xP 23 K-N1 PxP
3 N-QB3 P-Q4 10 P-Q5 B-B1! 17 0-0-0 B-K3 24 Q-N5 RxP
4 Q-N3?! PxP 11 B-K2 N-Q2 18 P-KR4! NxN 25 B-Q3 Q-Q4
5 QxPch B-N2 12 N-N4? P-KB4! 19 QxN N-Q4 26 P-QN3 RxP
6 N-B3 0-0 13 N-B6ch K-R1 20 Q-KN3 NxN 27 resigns
7 B-KB4?! N-R3 14 P-K5 N-N3 21 QxN Q-K1!

VIII. White: Jude F. Acers; Black: C. William Jones III. USCF-rated match, San Francisco, October 1970. Opening: Sicilian Defense, Nimzovich-Rubenstein Variation.

1 P-K4 P-QB4 8 NxP! NxP!? 15 RxQ BxR 22 R-K7ch K-Q1
2 N-KB3 N-KB3 9 Q-K2! Q-K2 16 QxQP R-KB1 23 RxP R-K1
3 P-K5 N-Q4 10 B-K3! N-B5 17 R-K1 P-QR3 24 N-K7! P-KR3
4 N-B3 P-K3 11 0-0-0 NxN 18 Q-R5ch K-Q2 25 Q-K4 P-KN3
5 P-Q4 N-QB3 12 R-K1! NxN? 19 N-B5 B-N4ch 26 QxKNP P-Q4
6 FxN KPxN 13 QxN P-Q3 20 K-N1 B-Q1 27 N-B6ch resigns
7 P-B3 PxP 14 Q-N5ch K-Q1 21 Q-Q5 B-B2

THE MOST INCREDIBLE GAMES EVER PLAYED.

A. White: Hampe; Black: Mettner. Played in Vienna, 1873. Opening: Vienna Game.

1 P-K4 P-K4 6 K-Q3 P-Q4 11 K-N4 P-R4ch 16 KxN B-N2ch
2 N-QB3 B-B4 7 K-B3 QxKP 12 KxN! N-K2! 17 K-N5! B-R3ch!
3 N-R4?! BxPch! 8 K-N3 N-QB3! 13 B-N5ch! K-Q1 18 K-B6! B-N2ch
4 KxB Q-R5ch 9 P-QR3 QxNch!!! 14 B-B6! P-N3ch 19 K-N5 B-R3ch
5 K-K3 Q-B5ch 10 KxQ N-B4ch 15 K-N5 NxN! drawn

B. White: E. Z. Adams; Black: Carlos Torre. Played in New Orleans, 1923.

Opening: Philidor's Defense.

1 P-K4 P-K4 7 N-B3 N-KB3 13 PxP P-QR4! 19 Q-QB4!!! Q-Q2
2 N-KB3 P-Q3 8 0-0 B-K2 14 KR-K1 R-K1 20 Q-B7!!! Q-N4
3 P-Q4 PxP 9 N-Q5 BxN 15 R-K2 R-QB1? 21 P-QR4!!! QxRP
4 QxP N-QB3 10 PxN 0-0 16 R/l-K1 Q-Q2 22 R-K4!!! Q-N4
5 B-QN5 B-Q2 11 P-B4 P-B3 17 BxN! BxB 23 QxNP!! resigns
6 BxN BxB 12 B-KN5 PxP 18 Q-KN4!!! Q-N4

A SPECIAL BONUS FOR CHESS VOICE READERS

Issue No. 19 of Chess Express, The International Chess Magazine, containing the final crosstables, photographs, games, and comment from the 1970 Chess Olympiad held at Siegen, is inserted into this issue of Chess Voice. We hope our readers will enjoy this special bonus and take the opportunity to examine this fine magazine and, hopefully, to subscribe.

BUSINESS PROCEEDINGS OF THE CCCA

By SALEH MUJAHED
CCCA Secretary



The annual meeting of the CCCA was held on Friday, 8 January 1971, in the Palm Room of the Berkeley Central YMCA, 2001 Allston Way, Berkeley. The meeting was called to order at 8:18 p.m. by the Chairman, Martin E. Morrison

The total attendance for the meeting was as follows: Ed Delgado, Martin E. Morrison (Berkeley CC); Michael Donald (Berkeley CC, UC Division); Hans Poschmann (Fremont CC); Richard R. Shorman (Hayward CC); Elwin C. Meyers (Oakland CC); Harold L. Barnett, Wesley A. Nelson (Livermore CC); Leonard F. Trottier (Richmond CC). Seven of 39 affiliates, 9 members.

It was adopted by general consent that the minutes of the previous (11 September 1970) meeting be approved as published in Chess Voice, the CCCA's official organ.

It was adopted by general consent THAT THE CHABOT CHESS CLUB, UPON THE APPLICATION OF JAMES HUTCHINSON, TEAM CAPTAIN; THE CASA ALVARADO CHESS CENTER, UPON THE APPLICATION OF THEODORE YUDAKUFSKI, DIRECTOR, AND MICHAEL R. EWELL; THE MECHANICS' INSTITUTE CHESS CLUB, UPON THE APPLICATION OF RAYMOND J. CONWAY, DIRECTOR; THE MILL VALLEY CHESS CLUB, UPON THE APPLICATION OF LEROY A. POST, PRESIDENT; THE SANGER CHESS CLUB, UPON THE APPLICATION OF WILLIAM MYERS, PRESIDENT PRO TEMPORE, BE AFFILIATED TO THE CCCA. The Chairman noted the change of the UC Chess Club's name to Berkeley Chess Club, UC Division.

The Treasurer, Mr. Trottier, gave the following
REPORT OF THE TREASURER OF THE CCCA

FOR THE PERIOD 8 SEPTEMBER 1970 TO 8 JANUARY 1971

Receipts.

Balance on hand 8 September 1970		\$167.75
Bimonthly assessment of affiliates	\$179.00	
Fines for late assessment payment	3.00	
USCF memberships received	64.00	
Postal Fee returned	60.00	
Tournament Subcommittee Fund returned	18.00	
Charter use	5.00	
Donation from Antioch Chess Club	21.80	
Special Fund Donation (Mr. Wallan)	75.00	
*League Team Fees received	49.50	
Clock sales	368.70	837.00
		<u>\$1006.75</u>

Disbursements.

USCF memberships transmitted	\$ 68.00	
Editors' expenses	275.00	
Special Fund to Larry Evans	100.00	
P. O. Box rent	4.95	
*League expenses: telephone calls	21.90	
Interest on clock loan	6.50	
Postage, insurance, and clock mailing supplies	3.70	
Clock sales retained for new shipment	228.40	\$706.45
Balance on hand 8 January 1971		300.30
Total		<u>\$1006.75</u>

*League Fund: \$27.60; General Fund \$272.70. CCCA membership on 8 January 1971: 413.

The League Director, Mr. Barnett, reported on the status of the CCCA's 1970-71 League in progress and moved that THE CCCA RULE THE ASSUMPTION THAT THE MECHANICS' INSTITUTE CHESS CLUB HAD ENTERED A TEAM IN THE LEAGUE WAS A MUTUAL MISUNDERSTANDING. The motion was seconded by Mr. Donald and adopted unanimously. It was moved by Mr. Donald, seconded by Mr. Meyers, and adopted unanimously THAT THE CHAIRMAN WRITE THE MECHANICS INSTITUTE CHESS CLUB THAT THE CLUB WOULD BE PERMITTED TO ENTER A TEAM BEGINNING WITH THE THIRD ROUND IF IT CONTACTED THE LEAGUE DIRECTOR IMMEDIATELY AND IF THE OTHER TEAMS IN THE WESTERN DIVISION OF THE USCF CATEGORY OF THE LEAGUE APPROVED OF THE TEAM'S ENTRY UNDER THE STATED CONDITIONS.

The Editor, Mr. Morrison, reported on the matter of the disposition of Mr. Wallan's donation to the CCCA, which had been referred to the Editors. He said that Mr. Wallan's \$75 plus the \$25 from the CCCA had been forwarded to International Grandmaster Larry Evans to do a series of annotations in connexion with a Best Games

Contest, to be conducted bimonthly in Chess Voice. In this way all members of the CCCA would benefit from the donation.

The CCCA Championship Administrator, Mr. Poschmann, reported on his Championship plans for 1971. It was moved by Mr. Meyers, seconded by Mr. Donald, and adopted by general consent THAT A CCCA CHAMPIONSHIP AGAIN BE HELD AS PER THE 9 JANUARY 1970 RESOLUTION AND THAT THE TREASURER BE AUTHORIZED TO DISBURSE FIVE TO EIGHT DOLLARS FROM THE CCCA GENERAL FUND FOR THE CHAMPIONSHIP EXPENSES.

The Chairman of the Standing Clock Committee, Mr. Trottier, gave the following report. Clocks sold \$366.70; clock sales retained for new shipment \$226.40, postage, insurance, and supplies \$3.70, interest on clock loan \$6.50 (total expenditures \$236.60); profit on clocks sold \$130.10, with 11 clocks unsold.

Mr. Morrison, member of the Standing Clock Committee, reported that the Hayward Chess Club had asked for the return of its loan to the CCCA to buy clocks, and he moved THAT A STANDING COMMITTEE, TO CONSIST OF MR. TROTTIER, CHAIRMAN, AND MR. MORRISON BE ESTABLISHED TO SELL CLOCKS AT A PROFIT TO THE CCCA GENERAL FUND; THAT \$47.63 BE NOW TAKEN FROM THE GENERAL FUND TO START A NEW PROGRAM OF CLOCK SALES, THE LOAN TAKEN FROM THE HAYWARD CHESS CLUB TO BE PAID OFF AS SOON AS FEASIBLE.

The Chairman read a letter from Pat Maloney, Tournament Director for the Northwest Interzonal High School Championship, requesting a donation for the Championship from the CCCA. It was moved by Mr. Nelson and seconded by Mr. Meyers THAT \$5 BE DISBURSED FROM THE CCCA GENERAL FUND FOR THE NORTHWEST INTERZONAL HIGH SCHOOL CHAMPIONSHIP. It was moved by Mr. Donald, seconded by Mr. Barnett, and lost 2-5 to amend the motion by striking out \$5 and inserting \$10. The original motion was adopted 6-2.

It was adopted by general consent that the meeting recess at the call of the Chairman. The Chairman declared the meeting recessed at 10:30 p.m. and called it to order again at 10:45 p.m. in the Chapel of the Berkeley Central YMCA.

It was adopted by general consent THAT AFFILIATE ASSESSMENTS BE PAYABLE ON THE FIRST OF FEBRUARY, APRIL, JUNE, AUGUST, OCTOBER, AND DECEMBER, WITH A GRACE PERIOD TO THE FIFTEENTH OF THE RESPECTIVE MONTH ALLOWED FOR PAYMENT; THAT ANY AFFILIATE NOT HAVING PAID ITS ASSESSMENT BY THOSE DATES BE NOTIFIED BY THE TREASURER THAT IT IS DELINQUENT AND HAS INCURRED A \$1 FINE; THAT ANY DELINQUENT AFFILIATE NOT HAVING PAID ITS ASSESSMENT BY THE THIRTIETH OF THE RESPECTIVE MONTH BE NOTIFIED THAT IT IS DOUBLY DELINQUENT AND HAS INCURRED ANOTHER \$1 FINE; THAT AN AFFILIATE'S FINES CAN BE WAIVED BY THE TREASURER IF IT SUBMITS A VALID EXCUSE FOR ITS DELINQUENCY. It was moved by Mr. Meyers, seconded by Mr. Mujahed, and lost 3-4 that "any delinquent affiliate . . . \$1 fine" be struck out. The original main motion was adopted unanimously

It was adopted by general consent THAT THE CCCA GIVE A VOTE OF THANKS TO THE ANTIQCH CHESS CLUB FOR ITS DONATION TO THE CCCA UPON DISBANDMENT AND TO HAROLD L. BARNETT AND WESLEY A. NELSON FOR THEIR FINE JOB IN GETTING THE CCCA'S 1970-71 LEAGUE UNDERWAY.

It was adopted by general consent THAT MR. DELGADO BE AN AD HOC COMMITTEE OF ONE TO REPORT AT THE NEXT CCCA GENERAL MEMBERSHIP MEETING ON PLANS FOR A CCCA PICNIC.

It was adopted by general consent THAT ALL PRESENT OFFICERS BE RE-ELECTED AND THAT THE POST OF AREA VICE CHAIRMAN BE ABOLISHED.

It was adopted by general consent that the meeting adjourn. The Chairman declared the meeting adjourned sine die at 11:15 p.m.

The Chairman, in accordance with Article V, Section i, of the CCCA Bylaws, has announced the regular CCCA general membership meeting in April for 9 April 1971, 8:00 p.m., at the Berkeley Chess Club, Berkeley Central YMCA, 2001 Allston Way, Berkeley.

OFFICIAL ANNOUNCEMENTS

1971 CCCA CHAMPIONSHIP TOURNAMENT. Last year fourteen clubs participated. After four rounds of knock-out, Sergius von Oettingen, of the UC Davis Chess Club emerged as the winner and is holding the magnificent perpetual trophy for the next winner. All CCCA affiliates are entitled to nominate one representative to play in the Championship, preferably through a knock-out tournament, but any other method is acceptable. Nominees should be sent by 1 April to Hans Poschmann, CCCA Championship Administrator, 4621 Seneca Park Avenue, Fremont 94536 (658-8505). Details of the tournament can also be obtained from Mr. Poschmann.

AFFILIATES SHOULD NOTE THAT THE DATES FOR PAYMENT OF ASSESSMENTS HAVE BEEN SLIGHTLY MODIFIED. For details, see the minutes above and page 16.

MATING MAZE

By RICHARD LEE, Chess Voice Problems Columnist

No. 78
LEAST DIFFICULT

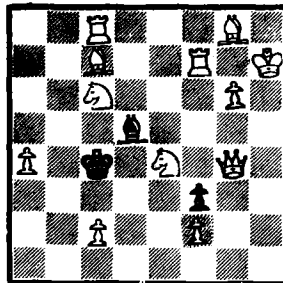
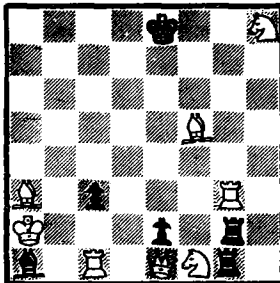
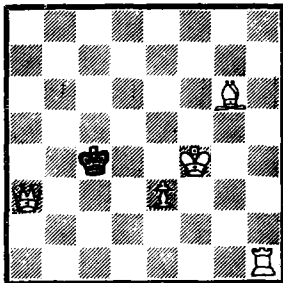
No. 79
MORE DIFFICULT

No. 80
MOST DIFFICULT

W to play and mate in two.

W to play and mate in two.

W to play and mate in two.



Chess Voice Problem Solving Contest No. 10

Solutions (the key move, i.e., the first move, is sufficient) in English Descriptive Notation must be received by this magazine (address on page 2) by 15 February. The winner will be the entrant who submits the correct solutions to the most problems; ties will be broken by lot. The contest is limited to CCCA members and Chess Voice subscribers.

The prize for this contest will be another in James R. A. Schroeder's series of tournament books for famous chess tournaments, Super Grandmaster Chess Tournament: St. Petersburg, Russia**1895/96 (published March 1968). Participants in the tournament were the legendary Emanuel Lasker, Wilhelm Steinitz, Harry Pillsbury, and Michael Tchigorin. The book includes complete match score charts, biographical data on the participants, all 36 match games, annotations, 65 diagrams, a table showing each participant's score after each round, and an index of openings (24 pages).

*

Winner of Contest No. 11

Eleven entrants submitted correct solutions for all three problems: Steve Dinerstein, of Berkeley; Kenneth Jackson, Jr., of Union City; L. Carter Keck, of Concord; Gary Kobliska, of Berkeley; Charles R. Nevins, of Fairfield; Steven G. Quen, of Alameda; Norman Reider, of San Francisco; R. Carl Shiflett, of Berkeley; Michael W. Tomey, of Sunnyvale; and Robert Vitelli, of Sacramento. Michael W. Miller, of Hayward, was selected by lot as the winner of the prize, James R. A. Schroeder's International Chess Tournament: Moscow 1967.

*

Solutions to Contest No. 11

No. 75: Q-B8. No. 76: N-K4. No. 77: B-Q4.

CHESS VOICE BEST GAMES CONTEST NO. 1

Of all games submitted by 15 March a Best Game will be chosen from each of the following rating groups: Master/Expert, Class A, Class B, Class C, Classes C/D/E & Unrated. All four Best Games will be published in the June-July issue of Chess Voice, AND ONE OF THEM, CHOSEN AT RANDOM, WILL BE PUBLISHED WITH THE COMPLETE ANALYSIS OF INTERNATIONAL GRANDMASTER LARRY EVANS.

Submitted game scores (limit: two per player per contest) must be legible and accurate and must include the following information: players' full names, date of game, name of the tournament in which the game was played, name of the CCCA affiliate of which the contestant is a member, and players' USCF ratings at the time of the game, if known.

Contestants must be CCCA members, and games must have been played in an event sponsored by the CCCA or a CCCA affiliate no more than six months preceding the closing date of the contest.

Send entries to John A. Wallan, Chess Voice Best Games Contest Judge, P. O. Box 2002, Oakland, CA 94604.

AFFILIATE NEWS

If your affiliate is not listed, we have not received any material concerning your activities. Please keep us informed of all your events for publication.

ALAMEDA CC . . . sponsored a simultaneous chess exhibition by USCF Master Jude F. Acers on 7 December which attracted no less than 45 challengers and 15 spectators. The master racked up 43 wins, losing only to Matthew Hubbard and Marvin Smitherman, club president. The club is moving to new quarters, Washington Jr. High School, Ninth and Santa Clara, Alameda. Meetings will still be from 7:00 to 11:00 p.m. Mondays. The club plans to begin a round robin tournament in the near future. [Marvin Smitherman]

HAYWARD CC . . . is now meeting in new quarters, the HARD Building in Palma Ceia Park. Meetings will continue to be held on Mondays and Fridays from 7:30 to 12:00 p.m. [Ernest M. Barthelomew]

MARTINEZ CC . . . hosted simultaneous exhibitions by International Grandmaster Walter S. Browne (23 November) and USCF Master Jude F. Acers (19-0-2). The preceding afternoon Mr. Acers played 41 games as Diablo Valley College (40-1-0). [John E. Wernes]

MONTEREY PENINSULA CC . . . also sponsored a simultaneous exhibition by IGM Walter S. Browne at the Casa Alvarado Chess Center on 5 December. Mr. Browne also gave a short lecture. . . . Bernard Lainsen won the Club Championship. [William Kennedy]

OAKLAND CC . . . completed its 1970 Oakland Chess Club Championship with David J. Forthoffer winning convincingly for the third consecutive year. This year the championship consisted of a five-round Swiss System tournament with the top four finishers to play a round-robin playoff to determine the final winner. Mr. Forthoffer, Raymond Ng, Charles A. Maddigan, and John A. Wallan were the qualifiers, the latter two on tie-break. A separate junior section was won by Dennis Fung. . . . The club's annual Christmas party was held on 18 December . . . 30-30 tournaments and handicap tournaments will start in the near future to supplement the club's weekly 5-minute tournaments. [Craig N. Barnes]

SANGER CC . . . a new CCGA affiliate, is conducting its first tournament, the January Chess Rating Tournament, Fresno Area. The USCF tournament and new club are the result of efforts by long-time Chess Voice subscriber, William A. Myers. [William A. Myers]

UC DAVIS CC . . . recently finished its 24th Davis Rated Tournament and Preliminaries for the 1971 Davis Championship.(November-December 1970). Qualifying for the Finals (25th Davis Rated Tournament, January-March 1971) were: Gary C. Pickler, William H. Hamaker, Eriks Leitis, Donald S. Napoli, David L. Olmsted, and Frank J. Garosi. Dianne Comini (pictured at r., standing, with her husband, Gian P. Comini, a club member, and her daughter Kira), Gene F. Lee, and Richard A. Roach, will play off for the seventh qualifier berth. 1970 Champion, Sergius von Oettingen, will be the eighth player in a double round robin tournament for the championship. [Sergius von Oettingen]



BOOK NOTES

James R. A. Schroeder, Ed. First Match for the Chess Championship of the World: Steinitz-Zukertort 1886. The World Championship Series. S.l., s.d. 36 pp., 29 games, 43 diagrams, 2 photograph, 3 tables, annotations passim. \$1.95.
James R. A. Schroeder, Ed.. Eighth Match for the Chess Championship of the World, 1908: Emanuel Lasker vs. Siegbert Tarrasch. The World Championship Series. Dallas: Chess Digest, Inc., 1970. 35 pp., 18 games, 41 diagrams, 2 photographs, 3 tables, annotations passim. \$2.45.
Order both from James R. A. Schroeder, Box 5268, Cleveland, OH 44101. Add 5¢ each for postage and handling.

THE CCCA'S 1970-71 LEAGUE: INTERIM RESULTS THROUGH ROUND 2
 By HAROLD L. BARNETT, CCCA League Director

USCF CATEGORY										INDEPENDENT CATEGORY											
D Team	R1	R2	R3	R4	R5	R6	R7	R8	R9	T	D Team	R1	R2	R3	R4	R5	R6	R7	R8	R9	T
W 1 Mechanics	L2	4	3	4	2	3	-	-	-	0	W 1 Alameda	L2	-	3	2	-	3	2	-	3	0
2 Oakland	W1	3	4	3	1	4	-	-	-	1	2 Berkeley	W1	D3	-	1	3	-	1	3	-	1½
3 Marin	4	2	1	2	4	1	-	-	-	0	3 Richmond	-	D2	1	-	2	1	-	2	1	½
4 Berkeley	3	1	2	1	3	2	-	-	-	0	E 1 Concord	W2	W3	4	3	4	2	-	-	-	2
E 1 Hayward	L4	3	2	4	3	2	-	-	-	0	2 Martinez	L1	L4	3	4	3	1	-	-	-	0
2 Livermore	3	W4	1	3	4	1	-	-	-	1	3 W Creek	W4	L1	2	1	2	4	-	-	-	1
3 DVI	2	1	4	2	1	4	-	-	-	0	4 Orinda	L3	W2	1	2	1	3	-	-	-	1
4 Concord	W1	L2	3	1	2	3	-	-	-	1	S 1 Fremont	W2	L4	3	2	4	3	-	-	-	1
S 1 Fremont	W2	W3	4	2	3	4	-	-	-	2	2 Livermore	L1	W3	4	1	3	4	-	-	-	1
2 Livermore	L1	L4	3	1	4	3	-	-	-	0	3 Berkeley	L4	L2	1	4	2	1	-	-	-	0
3 Chabot	D4	L1	2	4	1	2	-	-	-	½	4 Oakland	W3	W1	2	3	1	2	-	-	-	2
4 San Jose	D3	W2	1	3	2	1	-	-	-	1½	N 1 Vallejo	L3	D4	2	3	4	2	-	-	-	½
N 1 Oakland	-	2	3	-	2	3	-	2	3	0	2 S Quantn	D4	W3	1	4	3	1	-	-	-	1½
2 Berkeley	W3	1	-	3	1	-	3	1	-	1	3 M Valley	W1	L2	4	1	2	4	-	-	-	1
3 Marin	L2	-	1	2	1	-	2	-	1	0	4 S Rosa	D2	D1	3	2	1	3	-	-	-	1

Underlined entry indicates result of forfeit.

A LEAGUE MATCH IN Berkeley vs. Marin Northern Division) Oakland (Independent Division). Pictured seated): Ken C. Meyers (CCCA Editor), Pete Delgado (Berkeley Team Captain). place on 20 November; Berkeley Chess Club. Martin E. Morrison,



PROGRESS: (USCF Category, and Berkeley vs. Category, Southern are (r. to l., Burns, Elwin C. Lew Stansby, and eley Independent The match took the site was the (Photograph by CCCA Editor.

NEWS NOTES

JAMES R. A. SCHROEDER, Box 5268, Cleveland, OH 44101, IS COLLECTING OLD CHESS BOOKS FOR PRISON CHESS CLUBS. Last year he sent \$300 worth of new books. Anyone wishing to help with this year's program should mail books or contributions to Mr. Schroeder at the address above.

BORIS SPASSKY, WORLD CHESS CHAMPION, WILL BE IN THE US THIS SUMMER. He is scheduled to give a simultaneous exhibition at the Mechanics' Institute Chess Club at \$15 per board, 30 boards maximum. Paul Keres will be travelling with the Champion.

US JUNIOR OPEN BIDS ARE BEING SOLI CITED BY MARTIN E. MORRISON FOR THE CALIFORNIA AREA. Details for bidding will be sent upon request to Mr. Morrison (see page 2 for address), member of the USCF Junior Chess Committee, who has been selected by committee chairman, Harry Glidden, to review all bids submitted from California.

WESTERN INTERCOLLEGIATE CHESS CHAMPIONSHIP entries are being solicited by the Continental Chess Association, 450 Prospect Avenue, Mt. Vernon, NY 10653. The event is open to individual college students and will take place in Los Angeles on 5-7 February. \$500 in prizes will be awarded. Entry fee is \$8.50 for USCF members. Full details can be obtained from the address above. The Western Senior Open and Western High School Championship will be held concurrently.

THE NEW DATE FOR THE NW INTERZONAL IS 27-28 FEBRUARY. This change has been made to avoid a date clash with the Western High School Championship.

AN INTRIGUING "CHESS CLUB LITERARY GROUP," OPERATING IN SACRAMENTO, HAS JUST COME TO OUR ATTENTION. A USCF affiliate, the group has collected an enviable chess library for use by members at the low cost of \$1.50 for three years. Corollary activities include lectures on opening theory and chess workshops for beginners, not to mention an elaborately worked out perpetual ladder tournament. President of the group is Ben Zeiler.

FIDE'S SIEGEN CONGRESS INTERPRETS, AMENDS LAWS OF CHESS

By MARTIN E. MORRISON

Member, USCF Tournament Direction Certification Committee

Questions and comments from readers on chess laws and tournament direction are welcomed. Contact the columnist at P. O. Box 1622, Oakland, CA 94604; telephone: (415) 582-1973.

Mr. Fred Cramer, FIDE (World Chess Federation) Vice President for Zone 5 (U. S. A.), who is this country's representative at the annual FIDE Congresses, has entrusted to me the pleasant duty of reporting to US chess players and officials the decisions made in the chess laws field at the recent Siegen Congress (September 1970). The following is a resume of all such decisions. When the complete minutes of the Congress are released, a complete version in the FIDE's official wording will be published as a supplement to my Tournament Direction Guide and Manual.

Six questions were posed to the Permanent Commission of the FIDE for the Laws of the Game.

Question 1. In terms of Article 16.5 ("The Resumption of the Game") of the Laws, what happens when "the envelope containing the sealed move has disappeared but it is still possible to establish by an agreement between the players the position at the adjournment and the times used until that moment"?

Answer. "The game . . . has to be continued."

Question 2. "What are the consequences when a player or team withdraws or [is] expelled from a tournament?"

Answer. The preliminary reply given by the Commission at the 1969 Congress is now made final. This reply was that "if a player /or team/ has not completed at least 50% of his games . . . , the points scored by him or against him are not counted in the final standings; otherwise, they are counted (cf. Martin E. Morrison and Elwin C. Meyers, Tournament Direction Guide and Manual (Oakland: Central California Chess Association, c. 1969), p. I-III.17-18/).

Question 3. In regard to Article 8 ("The Touched Piece"), the Commission expressed "complete agreement" with the statement of Kenneth Harkness in the Official Chess Rulebook (New York: David McKay, c. 1970), p. 38, letters c) and d). Also, the Commission ruled that "paragraph 3 of that Article should be understood thus, that "if a player wishes to claim that his opponent has broken this rule, he must do so before himself touching a man," another suggestion of Mr. Harkness.

Question 4 and Answer. The history of this question, originated by me and submitted by the USCF, has been discussed elsewhere. The Commission ruled, in regard to Article 17.1 ("The Loss of the Game"), that "special regulations should be allowed in so far as they are required for the conducting of tournaments . . . in which the number of players is large and the number of officials is rather small."

Question 5. May a player write down his move on his score sheet before making the move on the chessboard? US players should be aware that International Grandmaster Robert J. Fischer insists that such a procedure violates FIDE Laws (cf. Ed Edmondson, "Fischer Dialogue," Chess Life & Review, June 1970, p. 317).

Answer. Fischer is wrong. The Commission ruled that "the players should have the right of choice."

Question 6 and Answer. The preliminary form of the "Recommendations to Organizers of International Tournaments," published in 1969, was adopted as final at this year's Congress.

Supplement No. 4 ("Supplementary Rules for the Blind Players") was amended by substituting for it the proposal of the International Braille Chess Association. The new version contains only a few changes from the previous procedure.

The Commission's seven members, elected for a four-year term, include International Master B. Harry Golombek, noted British chess organizer and author, and our own Kenneth Harkness. Our fondest congratulations are extended to Mr. Harkness, who is, to our knowledge, the first of our countrymen to serve on this international Commission. Newly elected FIDE President, International Grandmaster Machgielis Euwe, of the Netherlands, serves as the eighth member and chairman of the Commission.

*

Again I must express my gratitude to Mr. Cramer for taking the time to send me the relevant material from the Congress to publish here. This country could not have a more vigorous and generous FIDE representative.

LATEST OFFICIAL USCF RATINGS OF CCCA MEMBERS

The following are the official USCF ratings of CCCA members through the "USCF Annual Rating List," published in the December Chess Life & Review. Almost all CCCA members through the 5 February assessment period with USCF ratings are listed. Please notify the Editors of any additions or corrections.

MASTER: 2200-2399; EXPERT 2000-2199; CLASS A: 1800-1999; CLASS B: 1600-1799; CLASS C: 1400-1599; CLASS D: 1200-2399; CLASS E: below 1200.

* indicates provisional ratings based on 10 to 18 games. Such ratings are less reliable than established ratings. # indicates ratings based on 4 to 9 games. Such ratings are highly reliable. Players who have played less than 4 games are not listed.

Total number of CCCA members with USCF ratings: 173 (43%), an 8% increase over last issue.

*

ALAMEDA CC (1): A Hall 1819*. ANTIUCH CC (6): R Guzman 1510*, H Lewis 1675, F Olvera Sr. 1536, R Oyler 1670, F Ulrich 1670, C Vail 1602. BECHTEL CC (4): W Allen 2008, T Cahill 1529, A Hanak 2085, A Saguisag 1824. BERKELEY CC (23): G Baum 1662, M Cooper 1447#, S Cross 1993, S Dinerstein 1601, W Fleissner 1699, D Gosiewski 1707, D Hall 1913#, C Johnson 1626, L Jones 1950#, J Kasprk 1233#, T Lechander 50#, D Levine 1562#, M McNow 1692, M Maloney 1519*, S Maurer 1558*, E Meyers 1699*, N Rosen 1863#, R Shiflett 1403*, L Stansby 1779#, R Uomini 1741, J Wallan 2017, C Yaffe 1709, E Yeung 1624. CHABOT COL. CC (2): A Bensen 2022, R Weinberg 1412#. COL. OF THE SEQUOIAS (1): C Fotias 1573. CONCORD CC (8): R Guzman 1510*, G Harcus Jr. 1338*, J Moore Jr 1553*, W Noble 1610*, F Olvera Sr 1536, K Templeton 1034#, F Ulrich 1670, C Vail 1602. DEVEL VOCATIONAL INSTITUTION CHESS INT. GROUP (1): C Comstock 2037#. EVERYMAN ATHLETIC CLUB CC (1): J Rowell 1857. FREMONT CC (8): K Jackson Jr 1681#, B Jansen 1539*, G MacLeod 1574, W Orr 1970#, R Pellerin 1620#, H Poschmann 1759. HAYWARD CC (8): M Albertson 1478#, E Bartholomew 1613, R Holloway 1664*, L Hopkins 1387#, K Lawless 1774, E McNally 1644. LIVERMORE CC (10): R Anderson 1328*, H Barnett 1749, G Boer 1805, R Cooper 1492*, K Giallanza 1491*, W Nelson 1899, G Roust 1698, J Shearer 1956, D Smith 1605*, K Trigger 1402#. MARIN CC (2): K Burns 1639*, L Post 1817. MARTINEZ CC (2): R Nace 1684*, R Swanson 1960. MONTEREY PEN. CC (3): R Atkinson 1521, M Ewell 2007, W Kennedy 1593. OAKLAND CC (25): J Acers 2272, R Alexander 1720, T Anderson 1443*, C Barnes 1982, A Boyd 1665*, M Costa 1541, M Crossland 1472*, R Cuneo 1772, D Forthoffer 1978, J Kasprk 1233#, G Kobliaska 1690#, L Lane 1229*, M Lee 1502#, R Lee 1446*, C Maddigan 1989, E Meyers 1699, R Ng 1816, S Quen 1921#, E Rubsamem 1585#, M Slean 1516#, W Sprague 1850, J Wallan 2017, F Warren 1264#, G Weber 1817, M Weber 2081. ORINDA CC (2): D Campbell 1732, D Stone 1852#. PIEDMONT HILLS H. S. CC (2): J Brittain 1368#, A Mock 1585#. RICHMOND CC (4): L Baker 1555, D Claudio 1707#, S Poulsen 1880, L Trottier 1520. SAN JOSE CC (37): W Adams 1892, T Burn 1786#, M Carney 1508#, A Critchlow 1787, Francis Crofut 1817, Fred Crofut 1912, R Delashmatt 1622, W Dickinson 1367#, A Gardner 1548#, M Gazse 1814, D Gordon 1192#, R Gordon 1731, J Iwashita 2071, R Merritt 1255#, B Mills 1640, H Mohrmann 1890, E Mueller 1878, R Mullins 1477*, D Myers 1756, L Nezhni 1918, C O'Brien 1473, E Osburn 2184, F Penoyer 1708, J Peterson 1741, L Prink 1539#, H Radke 1898, R Richey 1192#, E Rosenthal 1510, R Roubal 1836, G Temme 1725, J Thomas 1542*, M Tomey 1416*, C Whelan 1559#, P Weiss 1712, K Wiens 1483#, S Willett 1469#, R Wright 1793#. SANGER CC (1): W Myers 1652. SANTA ROSA CC (6): R Dusatko 1472#, J Evans 1651, L Henderson 1866, D Johnson 1741, B Keeney 1702*, S Kornher 1958. UC DAVIS CC (5): C Comini 1624, D Olmstead 1643, G Pickler 2106, R Roach 1654, S Von Ottingen 2089. VALLEJO CC (6): F Harris 1872, G Henderson 1719#, L O'Doan 1697, G Rasmussen 1869, B Smith 1883, N Wood 2070. VISALIA CC (1): C Fotias 1573. WALNUT CREEK CC (8): S Bass 815#, G Bigelow 1609#, S Bodner 1460#, D Hall 1913#, M McNow 1692, S Mujahed 1596*, C Vail 1602, J Weiler 1464.

ACCUMULATED CCCA CALIFORNIA STATE CHESS CHAMPIONSHIP QUALIFYING POINTS

All points up to and including the CCCA's Regional One-Day Round Robin Chess Tournament (2 January) have been totaled. For upcoming tournaments awarding CCCA Qualifying Points, see page 3.

Craig N. Barnes	4.63	William A. Myers	2.00	Donald Stone	1.50
Marcos B. Costa	2.25	John L. Peterson	2.00		
Keith Guertner	2.00	Guillermo Rey	1.50		

CCCA AFFILIATE DIRECTORY

(Current number of CCCA affiliates: 39; members: 437.)

For information on affiliation to the CCCA and its benefits, contact the Editors (address and telephone number on page 2). THE FOLLOWING ARE NOT MAILING ADDRESSES.

- ALAMEDA CC: M, 7-11 p.m.; Washington Jr. H. S., Santa Clara Ave. & Ninth St.
- ALAMEDA NAS CC: Alameda Naval Air Sta.
- ANTIOCH CC: Inactive at present.
- BECHTEL CC: W, 7:30 p.m.; 11th Fl. Conf. Rm., 50 Beale St., San Francisco.
- BERKELEY CC: F 7-11 p.m.; Palm Rm., Berkeley Cen. YMCA, 2901 Allston Wy.
- BERKELEY CC, UC DIV.: F, 7-11 p.m.; Palm Rm., Berkeley Cen. YMCA, 2001 Allston Wy.
- BERKELEY LIVE OAK CH. GP.: M 7-10:30 p.m.; Live Oak Rec. Cen., 1301 Shattuck Ave.
- BERKELEY SEN. CEN. CH. GP.: TU, 9 a.m.-12 m.; Sen. Cen. of Berkeley, 1849 Univ. Ave.
- CAPITAL CITY CC: W, 7:30-11 p.m.; Clunie Clubhouse, Alhambra & "F" Sts.
- CASA ALVARADO CHESS CEN.: TU-F, 4-12 p.m., SA-SU, 2-12 p.m.; Casa Alvarado Chess Cen., 467 Alvarado St., Monterey.
- CATERPILLAR CC: Inactive at present.
- CHABOT COL. CC: M, 6-10 p.m.; Rm. 830, Chabot Col., 25555 Hesperian Blvd., Mt. Eden.
- COL. OF THE SEQUOIAS CC: TU, 12 m.-1 p.m.; Rm. 338, Col. of the Sequoias, Mooney Blvd., Visalia.
- CONCORD CC: F, 7:30-11 p.m.; Concord Sen. Citizens Cen., 2974 Salvio St.
- DEUEL VOCATIONAL INSITUITION CHESS INT. GROUP: M & F, 7-9:30 p.m.; Deuel Vocational Institution, So. Kasson Rd., Tracy.
- EVERYMAN ATHLETIC CLUB CC: TU night; Del Webb Townhouse, 2220 Tulare St., Fresno.
- FREMONT CC: TH, 7-11 p.m.; Westridge Pk. Comm. Cen., 36200 Fremont Blvd.
- HAYWARD CC: M & F, 7:30-12 p.m.; HARD Bldg., Palma Ceia Pk., Decatur Wy.
- LIVERMORE CC: 1st & 3rd F, 7:30-11 p.m.; Old Lib., Carnagie Bldg., 4th & "J" Sts.
- MARIN CC: TU, 8 p.m.; London Arms, 81 Red Hill Ave., San Anselmo.
- MARTINEZ CC: M, 7:30; Martinez Hacienda, 1111 Ferry St.
- MECHANICS' INSTITUTE CC: M-F 9 a.m.-11 p.m., SA 9 a.m.-12 p.m., SU & HOL. 9 a.m.-10 p.m.; Mechanics' Institute Bldg., 4th Fl., 57 Post St., San Francisco.
- MILL VALLEY CC: TU, 8 p.m.; London Arms, 81 Red Hill Ave., San Anselmo.
- MONTEREY PEN. CC: TH, 7:30 p.m.; Casa Alvarado Chess Cen., 467 Alvarado St., Monterey.
- OAKLAND CC: F, 7-11:30 p.m.; Multipurpose Rm., Lincoln Elem. Sch., 225 Eleventh St.
- ORINDA CC: TH, 7:30 p.m.; St. Stephen's Epis. Ch., St. Stephen's Dr. & Via Las Cruces.
- PIEDMONT HILLS H. S. CC: M-F, 2:30-4 p.m.; Rm. E14, Piedmont Hills H. S., 1377 Piedmont Rd., San Jose.
- PLEASANT HILL CC: F, 7:30 p.m.; Field Ho., PH Pk. & Rec. Cen., 147 Gregory Ln.
- RICHMOND CC: F, 7 p.m.; Our Lady of Mercy Ch., 301 W. Richmond Ave., Pt. Richmond.
- ST. MARY'S COL. CC: St. Mary's Col. of Calif., Moraga.
- SAN JOSE CC: W, 7:30 p.m.; San Jose Cen. YMCA, 1717 The Alameda.
- SAN QUENTIN CC: Calif. State Prison.
- SANGER CC: Cafe Midi, 5048 No. Maroa Ave., Fresno.
- SANTA ROSA CC: F, 7-10 p.m.; Santa Rosa Jr. Col., 1501 Mendocino Ave.
- UC DAVIS CC: M, 7-11 p.m.; Games Rm., Mem. Union, Univ. of Calif., Davis.
- VALLEJO CC: F, 7:30 p.m.; Vallejo Comm. Cen. Bldg., 225 Amador St.
- VISALIA CC: F, 7:30 p.m.; Rec. Pk. Bldg., 345 No. Jacob St.
- WALNUT CREEK CC: TU, 7:30 p.m.; Sen. Citizens Hospitality House, 1385 Civic Dr.
- WESTERN ADDITION CC: TU, 7:30 p.m.; Family Serv. Agcy., 1010 Gough St., Cathedral Hill, San Francisco.

THE COMPLETE OFFICIAL STATE TOURNAMENT CALENDAR
(Continued from page 3.)

1-3 OCT.	?CEN. CALIF. OPEN	USCF	SACRAMENTO
9-10 OCT.?	NO. CALIF. CHAMPIONSHIP	USCF	SAN FRANCISCO
16-17 OCT.?	FIGHT OF THE BUMBLER B (no Qual. Pts.)	USCF	MONTEREY
23-24 Oct.	?Redwood City Open	CFNC (& USCF)	Redwood City
25-28 Nov.	American Open (A Nat. T.)	USCF	Santa Monica
11-12 DEC.?	4TH ANN. SAN FRANCISCO OPEN CHESS T.	USCF	SAN FRANCISCO
18-19 DEC.	OAKLAND CC'S 6TH ANN. SAN FRANCISCO BAY AREA AMATEUR OPEN	USCF	OAKLAND
8 JAN.	CCCA'S REGIONAL 1-DAY ROUND ROBIN CHESS T.	USCF	WALNUT CREEK
23-24 Jan.?	1971 Pen. Jr. Chess Championship T.	CFNC	Sunnyvale
23-24 Jan.?	1971 East Bay Jr. Chess Championship T.	CFNC	Oakland

POSTMASTER: SEND P. O. D. FORM 3579 TO:
Editors

Central California
Chess Association
Post Office Box 1822
Oakland, California 94604
Telephone: (415) 582-1873

Juergen Kasprk
3536 Harrison St.
Oakland, CA. 94611

*** THE OAKLAND AND BERKELEY CHESS CLUBS ARE TRYING TO ARRANGE
A SPECIAL SIMULTANEOUS EXHIBITION APPEARANCE IN THE SAN FRAN-
CISCO BAY AREA BY INTERNATIONAL GRANDMASTER SVETOZAR GLIGORIC,
ELEVEN TIMES YUGOSLAV CHAMPION. Mr. Gligoric writes the "Game
of the Month" feature in Chess Life & Review and has recently
authored Selected Chess Masterpieces and The Sicilian Defense.
Date and details have not been set, so for further information
contact Craig N. Barnes, 1717 Francisco St., Berkeley 94703
(841-1646) or Martin E. Morrison (address and telephone number
on page 2).

*** THOSE DRIVING TO THE 1971 GRAND PRIX CLASS CHAMPIONSHIPS
IN FRESNO, 27-28 MARCH, who would like to share expenses with
a passenger and those who need a ride and are willing to share
expenses should contact Martin E. Morrison, who also has infor-
mation on bus transportation. DON'T MISS THIS FANTASTIC CER-
TRAL CALIFORNIA EVENT.

*** NEXT CCCA GENERAL MEMBERSHIP MEETING: Friday, 9 April, 8:00
p.m., Berkeley Chess Club, Palm Room, Berkeley Central YMCA,
2001 Allston Way, Berkeley. Every member of the CCCA, i.e.,
every person who is certified by the appropriate officer of a
chess club or organization affiliated to the CCCA (listed on
page 15) to be a member or officer of the affiliate, has full
privileges of debate and voting. Nonmembers are welcome.

*** NEXT USCF TOURNAMENTS OF THE CCCA AND ITS AFFILIATES: See
page 3.

*** DEADLINE FOR CHESS VOICE BEST GAMES CONTEST NO. 1: 15
March. See page 10.

*** DEADLINE FOR CHESS VOICE PROBLEM SOLVING CONTEST NO. 12:
15 February. See page 10.

*** CHESS CLOCKS: Lowest price in the US; no wait-
ing weeks for delivery. BHB Style M, tan, unbreak-
able plastic case, 6" x 3" x 1 1/2"; two-year guar-
antee from the manufacturer; "the world standard
for dependable quality and durability at a moder-
ate price; used at the most recent Interzonal Tournament" (USCF).
ONLY \$12.50. By immediate pickup from Leonard F. Trottier,
Richard R. Shorman, Martin E. Morrison (addresses and telephone
numbers on page 2), or John R. Moore, Jr. (1390 Kansas Circle,
Concord, CA 94521, 682-2438 or, at work in San Francisco, 556-
6895) or by mail from Mr. Trottier only (add \$1 postage and in-
surance for addresses within Central California).



*** NEXT AFFILIATE ASSESSMENTS DUE: 1 Feb. with a grace period of
two weeks allowed for payment. Appropriate officers of each affi-
liate should send 20¢ per club member, along with a list of the
names and addresses of the affiliate's members, to the CCCA Treas-
urer (address on page 2). Fines as much as \$2.00 will be levied
for delinquent payment without a valid excuse.



*** USCF MEMBERSHIPS AT A 20% DISCOUNT, ONLY FOR
CCCA MEMBERS OR THOSE PLAYERS JOINING THE USCF AT A
CCCA-SPONSORED TOURNAMENT: \$4 (under 21), \$8 (21
and over) per annum, new or renewal. Others may
join at the regular rate of \$5 or \$10, respectively. Send
memberships to the CCCA Treasurer. Benefits include a monthly
Chess Life & Review subscription, eligibility for a USCF (na-
tional) rating, and discounts on chess equipment.

*** USCF MEMBERSHIPS: \$2.50 (under 21), \$5 (21 and over) per
annum from USCF Treasurer Dr. Ralph R. Emligon, 1501 LeRoy Ave-
nue, Berkeley, CA 94708. Benefits include a bimonthly Cali-
fornia Chess Reporter subscription, use of a USCF Rating Card
(to keep track of your approximate updated USCF rating), and
eligibility for Qualifying Points toward becoming the CCCA's
Finalist in the California State Chess Championship.

*** ALL CHESS PLAYERS ARE STRONGLY URGED TO BECOME MEMBERS OF THE
UNITED STATES (USCF) AND CALIFORNIA STATE (CSCF) CHESS FEDERATIONS.