

95 Chess Clubs
and Organizations

TOTAL CIRCULATION: 832
641 Chess Players

96 Chess Publications
and Libraries

THE CENTRAL CALIFORNIA CHESS VOICE



CENTRAL CALIFORNIA'S CHESS MAGAZINE
and
OFFICIAL ORGAN
of the
CENTRAL CALIFORNIA CHESS ASSOCIATION
(An Authorized Affiliate
of the United States Chess Federation)

MARTIN E. MORRISON
Editors
. ELWIN C. MEYERS

June-July 1971
Whole No. 21



FOR THE FIFTH CONSECUTIVE YEAR THE OAKLAND CHESS CLUB HAS PARTICIPATED IN THE ANNUAL OAKLAND HOBBY SHOW. Pictured above is the display entered in the Sixth Annual Hobby Show, held at the Oakland Auditorium on 16-18 April and sponsored by the Oakland Hobby Council of the Office of Parks and Recreation. Against the background of the club's rating board and trophies won in various competitions, Michael Weber (l.), club president, Stephen G. Quen (cen.), club treasurer, and Craig N. Barnes (r.), club publicity director, play interested visitors. (Photograph by Martin E. Morrison, Chess Voice Editor.)

Editors
Central California
Chess Association
Post Office Box 1622
Oakland, California 94604
Telephone: (415) 582-1973

Send change of address notices, undeliverable copies, orders for subscriptions, and other mail items to the magazine's mailing address above. POSTMASTER: SEND P. O. D. FORM 3579 TO THE MAGAZINE'S MAILING ADDRESS ABOVE.

Chess Voice is published bimonthly. EVERY MEMBER OF THE CCCA, I.E., EVERY PERSON WHO IS CERTIFIED BY THE APPROPRIATE OFFICER OF A CHESS CLUB OR ORGANIZATION AFFILIATED TO THE CCCA (listed on page 15) TO BE A MEMBER OR OFFICER OF THE AFFILIATE, receives mailed to his home a Chess Voice subscription, paid for in connexion with the payment of the affiliate's CCCA assessments in a distinct, voluntary, and independent act on the part of each individual member, the relation of subscriber being clearly understood and fully agreed to. Known office of publication (not the magazine's mailing address): Campus Bancroft Building, Room 206, 2440 Bancroft Way, Berkeley, California 94704. Second-class postage paid at Berkeley, California.

The opinions expressed in Chess Voice are those of the Editors or of the respective contributors. They do not necessarily constitute an official policy of the CCCA or any of its affiliates.

NONMEMBER SUBSCRIPTIONS: \$2.00 per annum.

ADVERTISEMENTS: 5¢ per word per issue on any subject (classified advertisements), \$5.00 per eighth page per issue, \$20.00 per insert per issue (this cost is more than \$0.04 cheaper per page for mailing tournament circulars, etc., than postage costs alone).

CCCA OFFICERS AND OFFICIALS

CHAIRMAN	MARTIN E. MORRISON
Post Office Box 1622, Oakland, CA 94604	582-1973
SECRETARY	SALEH MUJAHED
Post Office Box 1622, Oakland, CA 94604	(582-1973)
TREASURER	LEONARD F. TROTTIER
5315 Macdonald Avenue, El Cerrito, CA 94530	233-1595
LEAGUE DIRECTORS	HAROLD L. BARNETT
677 Caliente Drive, Livermore, CA 94550	447-4588
	FRANK V. LEFFMAN
3517 Jordan Road, Oakland, CA 94619	531-4804
EDITORS	MARTIN E. MORRISON
Post Office Box 1622, Oakland, CA 94604	582-1973
	ELWIN C. MEYERS
Post Office Box 1622, Oakland, CA 94604	(582-1973)
PUBLICITY DIRECTOR	RICHARD R. SHORMAN
27858 Tampa Avenue, Hayward, CA 94544	782-5029

CCCA Championship Administrator: Hans Poschmann.

Intercollegiate Chess League of America Liaison: Martin E. Morrison (ICLA Regional Vice President for California and Hawaii). (The CCCA serves in the position of intercollegiate chess league for the California and Hawaii area of the ICLA).

Postal Chess Director: Edward Delgado.

Standing Committees. Clock: Leonard F. Trottier, Chairman, Martin E. Morrison. Tournament and Club Relations: Martin E. Morrison, Chairman, Elwin C. Meyers (Standing Tournament Subcommittee); Harold L. Barnett, Everett L. McNally (Club Coördinator).

USCF Directors: Martin E. Morrison (At-large, Northern California; Member, Standing State Tournament Calendar Committee and Standing Tournament Committee, Northern Section), Gunnar H. Rasmussen (Redwood Empire Area; Chairman, Board of Directors).

USCF Directors: William T. Adams, William Kennedy, Elwin C. Meyers, Martin E. Morrison (National Chairman, Nominating Committee; Member, Tournament Director Certification Committee and Chairman, USCF Official Tournament Direction Guide Subcommittee; Member, Junior Chess Committee), E. H. Mueller, Saleh Mujahed, William T. Myers, Robert L. Oyler, Gunnar H. Rasmussen, Sergius von Oettingen.

Members should feel free to contact their officers and officials regarding any aspect of chess business. They will be happy to serve you. Of course, additional help is always needed and welcomed. Offer your help to your CCCA.

***THE COMPLETE OFFICIAL STATE CALENDAR AND CLEARINGHOUSE
FOR NORTHERN AND CENTRAL CALIFORNIA TOURNAMENTS
OFFICIALLY SANCTIONED BY THE CALIFORNIA STATE CHESS FEDERATION***

CHESS VOICE PUBLISHES THE ONLY COMPLETE OFFICIAL STATE CALENDAR AND SERVES AS THE ONLY CLEARINGHOUSE FOR NORTHERN AND CENTRAL CALIFORNIA TOURNAMENTS. For information, clearance, and listing for Northern and Central California tournaments, contact Chess Voice directly (address and telephone number on page 2).

Chess Voice is officially designated by the CSCF "to have charge of data" for this calendar, "to avoid competition, publicize, and promote attendance." In addition, Chess Voice is also officially designated by the CSCF "to coordinate tournament dates."

TOURNAMENT ORGANIZERS HAVE THE RESPONSIBILITY TO SUBMIT TO THE EDITORS EVERY TOURNAMENT DATE (ANNUAL DATES MUST BE SUBMITTED EVERY YEAR) AS MUCH IN ADVANCE AS POSSIBLE FOR CLEARANCE FROM CONFLICTS. Cleared tournaments will be officially listed. Tournaments not cleared or not submitted for clearance will not be listed and will have no official standing whatsoever.

USCF tournaments of the CCCA and its affiliates are capitalized. At these tournaments CCCA California State Chess Championship Qualifying Points will be awarded. To obtain them, a player must produce an unexpired CSCF membership card or join the CSCF upon registration at the tournament.

*
POSTPONED FROM 29-30 MAY TO 19-20 JUNE: CCCA'S 2ND ANN. USCF CLASS C. T. AT SAN JOSE

29-31 May	1971 Calif. Class Championships (A State T.)	USCF & CSCF	Fresno
5-6 JUNE	SUMMER RATING T.	USCF	SAN FRANCISCO
19-20 JUNE	CCCA'S 2ND ANN. USCF REG. CLASS C. T. AT SAN JOSE	USCF	SAN JOSE
26-27 JUNE	7TH ANN. MONTEREY INT. OPEN C. T.	USCF	MONTEREY
3-5 JULY	8TH ANN. ARTHUR B. STAMER MEM. T.	USCF	SAN FRANCISCO
17-18 JULY	CCCA'S 2ND ANN. USCF REG. CLASS C. T. AT BERKELEY	USCF	BERKELEY
31 JULY-	CCCA'S 3RD ANN. USCF REG. ADULT & JR. C. CHAM. OF		
1 AUG.	CEN. CALIF. (triple Qual. Pts.)	USCF	HAYWARD
8-20 Aug.	US Open Chess Cham. (A Nat. T.)	USCF	Ventura
11-12 SEPT.	CCCA'S 1ST ANN. USCF REG. USCF CLASS C. T. AT SAN FRANCISCO	USCF	SAN FRANCISCO
19 Sept.	9th Ann. Scholarship C. Festival	Unr.	Hayward
25-26 Sept.	6th Ann. 1971 Sunnyvale Open C. Cham. T. & 1971 Santa Clara Open Jr. C. Cham. T.	(USCF), CFNC	Sunnyvale
9-10 OCT.	CARROLL M. CAPPS MEM. C. T.	USCF	SAN FRANCISCO
16-17 OCT.	FIGHT OF THE BUMBLER B	USCF	MONTEREY
7 NOV.	CCCA'S 1ST ANN. USCF REG. 1-DAY ROUND ROBIN AT BERKELEY	USCF	BERKELEY
25-28 Nov.	American Open (A Nat. T.)	USCF	Santa Monica
8 JAN.	CCCA'S REG. 1-DAY ROUND ROBIN C. T. AT WALNUT CREEK	USCF	WALNUT CREEK
19-20 FEB.	CCCA'S 1ST ANN. NAT. CLASS CHAMPIONSHIPS	USCF	BERKELEY
25-26 MAR.	CCCA'S 3RD ANN. USCF REG. CLASS C. T. AT SAN JOSE	USCF	SAN JOSE
29-30 APR.	CCCA'S 2ND ANN. USCF REG. GOLDEN BEAR CLASS CHAM- PIONSHIPS	USCF	BERKELEY
17-18 JUNE	CCCA'S 3RD ANN. USCF REG. CLASS C. T. AT CONCORD	USCF	SAN JOSE

A REMINDER TO CHESS ORGANIZERS OF USCF REGION VIII

Remember to send news reports of all USCF-rated activity (and important un-rated activity) to Martin E. Morrison (address and telephone number on page 2) for inclusion in the new "Region VIII Activity" column to be instituted in Chess Life and Review, replacing the old "Tournament Life Here and There" feature for Far West activities (California, Arizona, Nevada, Oregon, Washington, Idaho, Utah, Alaska, and Hawaii). Rating reports should be submitted directly to the USCF as usual. All organizers should take advantage of this special opportunity to publicize their events.

The column will cover all Far West activity from this time forward and will be published every two or three months beginning in July.

NEWS

Large--and Strong--Turnout at Fresno Grand Prix

The largest chess tournament held in recent memory at Fresno drew a record-breaking 83 players, including some of the strongest in the Pacific Region of the United States Chess Federation. The 1971 Grand Prix Class Championships (USCF Region VIII) was held on the weekend of 27-28 March at the spacious Towne-House. The tournament was organized and directed by Martin E. Morrison, Accredited California State Chess Federation Tournament Director and Member of the USCF Tournament Director Certification Committee, and Elwin C. Meyers. William A. Myers, newly appointed USCF Director and CCCA-USCF workhorse in the Fresno area, rendered invaluable assistance.

In the Master/Expert/Class A Division, a four-way tie for First Overall developed between John Grefe (2317), of Berkeley, Jeff Kent (2189), of Northridge, Julius H. Loftsson (2206), of Los Angeles, and Dennis L. Waterman (2167), of Berkeley--all with $3\frac{1}{2}-\frac{1}{2}$. \$300 was split between the four. Peter J. Manetti, Third Expert at 3-1 received a \$7.50 Chess Digest gift certificate, and James McCormick and Robert R. Stetson, Fourth-Fifth Expert at $2\frac{1}{2}-1\frac{1}{2}$, received a \$1.25 gift certificate each. Richard R. Roubal, having faced stiff opposition, was the only "A" to score $2\frac{1}{2}-1\frac{1}{2}$, thus earning him \$75.00. A four-way tie for Second-Fifth Class A (2-2) earned J. Carter Lenoir, Dan Maxwell, Michael D. Mills, and Kenneth Morrisey \$8.75 each.

Kenneth E. Smith (not to be confused with the slightly more famous Master Kenneth R. Smith) took a clear first place in the B Division with a perfect 4-0 score and carried away \$75.00. Herbert Faeth took second in the Division with $3\frac{1}{2}-\frac{1}{2}$ and earned \$25.00. Five-dollar Chess Digest gift certificates were won by the Third-Fourth B's Dane E. Hinrichsen and Danny E. Krystall.

Michael A. Maloney and Conrad Van Valkenburg topped Classes C/D/E with perfect scores of 4-0, netting them \$50.00 each. Nine "C" players tied at Third-Ninth Place with scores of 3-1. Harry L. Bradbury, Chris A. Fotias, Myron A. Johnson, Jamie Miller, Randall Pina, R. Carl Shiflett, George H. Smith, and David N. Taylor each received \$1.25 gift certificates. Five players in Class D tied at 2-2, and each took home \$8.50: Stanley Bovetz, III, David Brimble, Richard Hand, Claud D. McHorse, Jr., and Terrence V. Wilkerson. Patrick Norris and Charles E. Worstell also scored 2-2 and won \$8.50 as First-Second Class E.

The tournament was sponsored by the Central California Chess Association.

*

A tournament book, to contain the best games from all classes, will be released soon. For further information see page 13.

*

Lawrence Hughes Tops Berkeley CC Tournaments

In the Berkeley Chess Club's Master/Expert Open, held January-March 1971, Lawrence Hughes placed a clear first with $3\frac{1}{2}-\frac{1}{2}$ and qualified as the Berkeley CC's representative in this year's CCCA Championship. Steven Cross, next at 3-1, qualified as the UC Division's representative.

In the Amateur Open, held concurrently, David A. Villeneuve scored 5-0 and won the First Unrated Prize in the USCF-rated section. Other winners with their scores were: Norman Rosen, 1st A ($4\frac{1}{2}-\frac{1}{2}$), Jared E. Peterson, 1st C/D/E ($4\frac{1}{2}-\frac{1}{2}$), Michael D. Cooper and Edward S. Yeung, 1st-2nd B (4-1).

In the non-USCF section of the Amateur Open Murray Turnbull took first place with 5-0.

A total of 60 players gathered at the Berkeley Central YMCA for the tournaments, directed by Martin E. Morrison.

Before the beginning of the club's Open Championship, which started 5 April and will continue through May, a Ten-Second Buzzer Speed Tournament was held. Fritz Scholz topped the field with 10 wins, closely followed by Elwin C. Meyers, Dinis G. M. Santos, and John Toulouse at 9 wins. Twenty-two participated.

The club will hold its next tournament, a Class Round Robin, beginning 18 June. The tournament will have both USCF-rated and non-USCF sections and is open to any player who becomes a member of the Berkeley Chess Club (dues range from 50¢ to \$4). Registration for this tournament, to be held on consecutive Friday evenings, will take place before 7:30 on the 18th.

*

McCaskey Returns to Victory at Visalia Amateur

Edward McCaskey, of Morgan Hill, came in twelfth with only $3\frac{1}{2}-2\frac{1}{2}$ in the Visalia Amateur of 1965. However, after a five-year lapse from tournament chess, he won the Seventh Annual Pre-Easter Visalia Amateur Open Championship Chess Tournament, held 2-4 April at the College of the Sequoias Student Union, Visalia, by defeating Mark Hoyt in the last round and emerging with $5\frac{1}{2}-\frac{1}{2}$, the highest score in the tournament.

This tournament, organized annually by Chris A. Fotias and directed this year by William Bragg, is open only to players with ratings below 1800 and is in the form of a six-round Swiss System. A total of 58 players entered, a 41% increase over the 1970 version.

\$400 in cash prizes were awarded. Those "sharing in the wealth" were: Edward McCaskey (\$100, Overall Champion); George Oakes, Walter Stuart, and Rick Shepard (split \$95, 2nd-4th Overall); Paul Bronson and Terrence Terman (split \$20, 1st-2nd Class C); Anita Gross and John Narcisi (split \$10, 1st-2nd Class D). Five junior players won \$5 each for best scores in their age groups: Michael Kunz, Randy Rainwater, and David Carney (1st Junior, Aged 14-16); Kelly Toomey and Arthur Kaufman (1st Junior, Aged Under 14). Others won trophies in special categories. A "Maharani" antique chess set, valued at \$90, a reproduction of an original in the Metropolitan Museum of Art, is yet to be awarded by Tournament Director Bragg for the Brilliancy Prize Game.

*

Lainson Wins Monterey Winter Rating Tournament

The Monterey Peninsula Chess Club has completed its 1971 Winter Rating Tournament. The winner? None other than Bernard Lainson, club champion, with 4½ points out of a possible 5. Michael R. Ewell was the only player able to hold the champion to a draw. William Gray, Jr., topped the A players with a 4-1 score and was tied for second overall with Mr. Ewell. Ted Montemurro's three points won the B division on tie-breaking points over Charles Nystrom and Stanley McCarty. The C prize went to Ken Roberson, now storming his way through the Berkeley Chess Club's Open Championship, with three points. Frank Saulsbury lost the prize on tie-breaking points. John Anderson scored two points to top all Class D players, and John Jarowski's three points put him at the top of the unrated players. The club's 1971 Championship Tournament is now under way.

Juniors should note an important tournament for them to be held in Monterey about the middle of July. First prize will be \$50 and entry fee to the US Junior Open. Juniors seeking further information on this event should contact the club at P. O. Box 261, Monterey, CA 93940.

OFFICIAL ANNOUNCEMENTS

CCCA Postal Chess Team

According to a resolution passed at the last CCCA General Membership Meeting, the CCCA will sponsor a postal chess team in the Correspondence Chess League of America. Mr. Edward Delgado will act as CCCA Postal Chess Director. All those interested in playing on this team should contact Mr. Delgado, 2380 Bryant Street, San Francisco, CA 94110; telephone: 824-6827.

*

CCCA's Free 1971 Open USCF Summer League

Again this year the CCCA will sponsor USCF summer league activity. This summer, as decided at the last CCCA General Membership Meeting, the league will be open, i.e., there will be no strength restrictions on boards. The rules of the CCCA's 1970-71 League will be used in so far as they apply. Play will start in early June, so those affiliates wishing to enter one or more teams should immediately contact League Director Harold L. Barnett (address and telephone number on page 2). Free.

*

CCCA Picnic

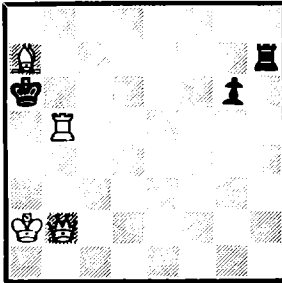
Those who remember last year's CCCA Banquet should especially look forward to this year's picnic. Those who missed last year's event should make a special effort to attend this year's gathering. Since this summer is so filled with CCCA tournaments—more than in any previous year—the members at the last CCCA General Membership Meeting decided to hold the picnic in conjunction with the CCCA's USCF Regional Adult and Junior Chess Championship of Central California. The picnic will be held the afternoon of Saturday, 31 July, in Meek Park, 240 Hampton Road (corner of Boston and Hampton Roads), Hayward. Drop by, watch the Championship, have a picnic meal, and play a little skittles chess. No charge, but bring your own food. There are several barbeque pits in the Park.

Those interested in helping out with the picnic should call Edward Delgado (address and telephone number above).

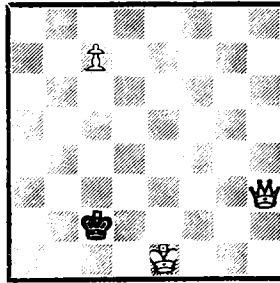


MATING MAZE
 By RICHARD LEE, Chess Voice Problems Columnist

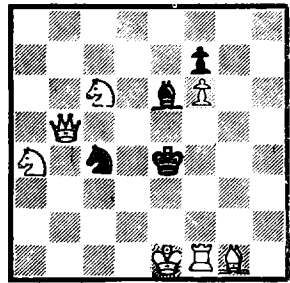
No. 84
 LEAST DIFFICULT
 By Scheel
 W to play and mate in two



No. 85
 MORE DIFFICULT
 By Shinkman
 W to play and mate in 3



No. 86
 MOST DIFFICULT
 By Abbott
 W to play and mate in 2



Chess Voice Problem-Solving Contest No. 14

Solutions (the key move, i.e., the first move, is sufficient) in English Descriptive Notation must be received by this magazine (address on page 2) by 15 June. The winner will be the entrant who submits the correct solutions to the most problems. Ties will be broken by lot. The contest is open to all Chess Voice readers.

The prize for Contest No. 14 will be Emanuel Lasker's Common Sense in Chess. "For half a century this book has been a consistent best-seller. In his treatment of the process of development, the strategy of the middle game, the shaping of the attack and the handline of the end game, Lasker offers the novice many valuable hints which will improve his game rapidly. Players of all degrees of strength, however, have benefitted enormously from the book's clear, shrewd exposition of some of the basic problems that are common to every game of chess." 152 pages, many diagrams.

*

Winner of Contest No. 13

Two sharp problemists caught a typographical error in No. 82: The bishop on Q2 should be a white, not a black bishop. The mistake was noted by Rodger Dusatko, of Santa Rosa. L. Carter Keck, of Concord, also demonstrated that mate in two was impossible in the published position. Consequently, the problem was voided for the purposes of the contest.

Four entrants submitted correct solutions for the remaining two problems: Rodger Dusatko, of Santa Rosa, Harold O. Radkevich, of San Jose, Dr. Norman Reider, of San Francisco, and Raymond Segal, of Berkeley. By lot Mr. Radkevich won the prize, Boris Spassky: World's Greatest Chess Player, edited by James R. A. Schroeder.

*

Solutions to Contest No. 13

No. 81: PxB/B! No. 82: QxQBf (in the position as corrected above). No. 83: K-N4.

----- (paid advertisement) -----

C H E S S B O O K S I N E N G L I S H

The Chess Psychologist Tal	\$4.00	Tal-Botwinnik, Return Match	\$2.50
(176 pp.)		(102 pp.)	
Spielmann, My Chess Career I	4.75	Spielmann, My Chess Career II	---
(360 pp.)		(in preparation)	
Spassky-Cozens, Road to the Summit	2.80	Soviet School of Chess, Kotov	3.50
Pachman, Queen's Gambit (225 pp.)	5.50	(380 pp.)	
Pachman, Semi Open Chess	6.25	Vulovic, The Chess Sacrifice	6.25
Bondarevsky, Combination in the	1.25	USSR-Hungary Chess Match, 1955	0.75
Middle Game			

Latvian Gambit and Blackmer-Diemer Gambit
 Monthly publication with Chess World

25¢

Printed and Distributed by Alfred Kalnajs, 719 W. Willow St., Chicago, IL 60614

THE CCCA'S 1970-71 LEAGUE: COMPLETE PRELIMINARY RESULTS
 By HAROLD L. BARNETT, CCCA League Director

USCF CATEGORY											INDEPENDENT CATEGORY										
D Team	R1	R2	R3	R4	R5	R6	R7	R8	R9	T	Team	R1	R2	R3	R4	R5	R6	R7	R8	R9	T
W 1 Oakl.	-	<u>W2</u>	W3	-	-	W3	-	-	-	2*	1 Alameda	<u>L2</u>	-	W3	<u>L2</u>	-	L3	<u>L2</u>	-	L3	1
2 Marin	<u>L3</u>	L1	-	WD	WD	WD	-	-	-	0	2 Berkeley	W1	D3	-	W1	D3	-	W1	<u>L3</u>	-	4
3 Berk.	<u>W2</u>	-	L1	-	-	L1	-	-	-	0	3 Richmond	-	D2	L1	-	D2	L1	-	<u>W2</u>	W1	4
E 1 Hayw.	<u>L4</u>	WD	WD	WD	WD	WD	-	-	-	0	1 Concord	W2	W3	D4	W3	L4	D2	-	-	-	4*
2 Liv.	W3	W4	-	W3	W4	-	-	-	-	4*	2 Martinez	L1	L4	L3	L4	<u>L3</u>	D1	-	-	-	1 1/2
3 DVI	L2	-	D4	L2	-	D4	-	-	-	1	3 W. Creek	W4	L1	W2	L1	<u>W2</u>	D4	-	-	-	3 1/2
4 Conc.	W1	<u>L2</u>	D3	-	L2	D3	-	-	-	1	4 Orinda	L3	W2	D1	W2	W1	D3	-	-	-	4
S 1 Frem.	W2	W3	D4	W2	L3	D4	-	-	-	4*	1 Fremont	W2	L4	W3	W2	L4	W3	-	-	-	4
2 Liv.	L1	L4	L3	L1	W4	L3	-	-	-	1	2 Livermore	L1	W3	L4	L1	W3	L4	-	-	-	2
3 Chab.	D4	D1	W2	L4	W1	W2	-	-	-	4	3 Berkeley	L4	<u>L2</u>	L1	L4	<u>L2</u>	L1	-	-	-	0
4 S Jse	D2	W2	D1	W3	<u>L2</u>	D1	-	-	-	3 1/2	4 Oakland	W3	W1	W2	W3	W1	W2	-	-	-	6*
N 1 Oakl.	-	W2	D3	-	L2	W3	-	D2	W3	4*	1 Vallejo	L3	D4	W2	<u>L3</u>	D4	<u>L2</u>	-	-	-	2
2 Berk.	W3	L1	-	L3	W1	-	W3	D1	-	3 1/2	2 San Quantn	D4	W3	L1	<u>L4</u>	L3	<u>W1</u>	-	-	-	2 1/2
3 Marin	L2	-	D1	W2	-	L1	L2	-	L1	1 1/2	3 Marin	W1	L2	D4	W1	<u>W2</u>	L4	-	-	-	3 1/2
											4 Santa Rosa	D2	D1	D3	W2	D1	W3	-	-	-	4*

Underlined entry indicates result of default. "WD" indicated withdrawn. According to FIDE regulations, if a team has not completed at least 50% of its games when it withdraws from competition, its score remains in the score table, but the points scored by it or against it are not counted in the final standings. For the matches not played, the team and its opponents get a "-" in the score table. * indicates the winner of a division. The tie in the Independent Category, Western Division, is yet to be broken.

AFFILIATE NEWS

If your affiliate is not listed, we have not received any material concerning your activities. Please keep us informed of all your events for publication.

*

BERKELEY CC . . . See "News" section above.

CAFFE MIDI CC . . . has been holding bimonthly USCF tournaments on weekends under the guidance of USCF Director William A. Myers. USCF activity and membership in the Fresno Metropolitan Area has been booming. Twenty-six new USCF members have already enrolled at these events. In a tournament held on 13-14 March, Philip D. Smith, of Fresno finished first, with Michael A. Mills, of Porterville, second. First and second Class B prizes went to Walter Stuart, of Fresno, and Robert Cable, of Livingston. Chris A. Fotias, of Visalia, won the C prize with Art Bretten, of Fresno, second. Senior unrated prizes went to Pat Mizek, of Fresno, Ed Sheffield, of Oakhurst, and Paul Karlhausen, of Fresno. Student prizes went to Michael Ordoñez, and Ross Newman, both of Fresno, and Paul Sell, of Visalia.

MONTEREY CC . . . See "News" section above.

UC DAVIS CC . . . Gary C. Pickler has won the 25th Davis Rated Tournament, which is the first half of the Davis Championship for 1971. His score of 6-1 topped Donald Napoli's 5-2 tally. David Olmsted, Gene F. Lee, and Sergius von Oettingen finished next, all with even 3 1/2-3 1/2 scores. Gian Comini won the B section with 6-1; Kevin Olwell followed with 5-2. A. J. Owens topped the C section, 5-1, one point ahead of D. Koutney and J. A. Reynolds. Twenty-four players participated. . . . The Davis team defeated a team from Sacramento 20-13 in a double match played 1 and 17 February. Messrs. Alexander and Comini each won two games for Davis.

CCCA'S 1971 CHAMPIONSHIP TOURNAMENT

By HANS POSCHMANN, CCCA Championship Administrator

Drawings for the first round of this year's CCCA Championship Tournament were held at the Hayward Chess Club. Each affiliate was entitled to enter one representative. First-round pairings by lot are:

Host: Martinez CC, Robert Nace	Visitor: Berkeley CC, Lawrence Hughes
Hayward CC, Jerry Rogers	Chabot College CC, James Hutchinson
Concord CC, William Noble	UC Davis CC, Sergius von Oettingen
	(last year's CCCA Champion)
	Fremont CC, Hans Poschmann
	Berkeley CC, UC Div., Steven Cross
Santa Rosa CC, Lee Henderson	Pleasant Hill CC, William Lanan
Orinda CC, John Jaffray	
Livermore CC, James Shearer	

BUSINESS PROCEEDINGS OF THE CCCA
By SALEH MUJAHED, CCCA Secretary



A regular meeting of the CCCA was held on Friday, 9 April 1971, in the Palm Room of the Berkeley Central YMCA, 2001 Allston Way, Berkeley. The meeting was called to order at 8:20 p.m. by the Chairman, Martin E. Morrison.

The total attendance for the meeting was as follows: Alan Bodine, Edward Delgado (Berkeley CC); Michael Donald, Bruce Hildreth, R. Carl Shiflett (Berkeley CC, UC Division); Hans Poschmann (Fremont CC); Martin E. Morrison (Hayward CC); Harold L. Barnett (Livermore CC); Elwin C. Meyers (Oakland CC); Leonard F. Trottier (Richmond CC). Seven of 38 affiliates; 10 members.

It was adopted by general consent that the minutes of the previous (8 January 1971) meeting be approved as published in Chess Voice, the CCCA's official organ.

The Chairman noted that the Mill Valley CC had merged into the Marin CC, and that the Sanger CC had changed its name to the Caffe Midi CC.

The Treasurer, Mr. Trottier, gave the following
REPORT OF THE TREASURER OF THE CCCA
FOR THE PERIOD 8 JANUARY TO 9 APRIL 1971

Receipts.

Balance on hand 8 January 1971		\$ 300.30
Bimonthly assessment of affiliates	\$163.50	
Fines for late assessment payment	6.00	
USCF memberships received	103.00	
League Team Fees received	4.50*	
Charter use	15.00	
Clock sales	692.50	
		<u>\$1284.80</u>

Disbursements.

USCF memberships transmitted	\$100.00	
USCF affiliation through February 1972	10.00	
Editors' expenses	300.00	
P. O. Box rent	5.40	
Donation to Northwest Interzonal High School Championship	5.00	
Treasurer's expenses for postage and envelopes	6.41	
Clock loan and interest repaid to Hayward CC	166.59	
Postage and insurance on clocks sold	5.40	
Clock sales retained	478.26	\$1077.06
Balance on hand 9 April 1971		<u>207.74</u>
Total		<u>\$1284.80</u>

*League Prize Fund: \$32.10; General Fund: \$175.64. CCCA memberships on 9 April 1971: 467.

The League Director, Mr. Barnett, reported that the preliminary competition in the CCCA's 1970-71 League was almost complete, and that playoffs would commence soon.

The CCCA Championship Administrator, Mr. Poschmann, reported that the deadline for affiliates' entries had been extended to 15 April.

The Chairman of the Standing Clock Committee, Mr. Trottier, gave the following report. Fifty clocks sold = \$692.50. Clock sales retained = \$430.63; postage and insurance on clocks sold = \$5.40, for a total of \$436.03. Profit on clocks sold = \$256.47, less clock loan and interest repaid to Hayward CC = \$166.59. Profit put into General Fund = \$89.88. Clock sales retained for next shipment = \$47.63. One clock in current shipment unsold. Clocks sold to date: 219.

Mr. Delgado, an ad hoc committee of one to report on plans for a CCCA picnic, reported that because of the great number of tournaments in the summer, a picnic would not be necessary. It was moved by Mr. Delgado, upon the suggestion of Mr. Morrison, and adopted by general consent THAT A PICNIC BE HELD IN CONJUNCTION WITH THE CCCA'S USCF REGIONAL ADULT AND JUNIOR CHESS CHAMPIONSHIP OF CENTRAL CALIFORNIA, AND THAT MR. DELGADO ARRANGE THE PICNIC IN CONJUNCTION WITH THE TOURNAMENT SUBCOMMITTEE OF THE TOURNAMENT AND CLUB RELATIONS COMMITTEE.

It was moved by Mr. Barnett and adopted by general consent THAT THE CCCA SPONSOR A FREE 1971 OPEN USCF SUMMER LEAGUE; THAT THE LEAGUE DIRECTORS INFORM ALL AFFILIATES BY MAIL OF THE LEAGUE; THAT THE CCCA'S 1970-71 LEAGUE RULES BE USED IN SO FAR AS THEY APPLY, WITH THE LEAGUE DIRECTORS BEING EMPOWERED TO MAKE NECESSARY MINOR ADJUSTMENTS.

It was moved by Mr. Poschmann and adopted by general consent THAT THE CCCA CHAMPIONSHIP ADMINISTRATOR BE ALLOWED TO PARTICIPATE IN THE CCCA CHAMPIONSHIP IF HE QUALIFIES THROUGH THE NORMAL PROCESS.

It was moved by Mr. Barnett and adopted THAT THE CCCA COMMEND MARTIN E. MORRISON AND ELWIN C. MEYERS FOR THE RESURGENCE OF THE BERKELEY CHESS CLUB TO ITS PRESENT STATE OF 125 MEMBERS.

It was adopted by general consent, after a report by Mr. Morrison on his correspondence with John Reinbergs, THAT THE CCCA SERVE IN THE POSITION OF INTERCOLLEGIATE CHESS LEAGUE FOR THE CALIFORNIA AND HAWAII AREA, WITH MR. MORRISON AS LIAISON.

It was moved by Mr. Delgado and adopted by general consent THAT THE CCCA SPONSOR A POSTAL CHESS TEAM IN THE CORRESPONDENCE CHESS LEAGUE OF AMERICA, WITH MR. DELGADO AS POSTAL CHESS DIRECTOR, AND THAT MR. DELGADO WORK WITH THE CHAIRMAN IN ESTABLISHING A CONNECTION WITH THE CCLA.

It was moved by Mr. Shiflett and adopted by general consent THAT MR. MORRISON LEARN ABOUT THE OPERATION OF DAILY CHESS CLUBS FOR POSSIBLE ACTION BY THE CCCA.

It was moved by Mr. Hildreth and adopted by general consent THAT THE ATTENTION OF THE USCF BE DRAWN TO THE SAN FRANCISCO BAY AREA AS A SITE FOR THE POSSIBLE FISCHER-LARSEN MATCH.

It was adopted by general consent that the meeting adjourn. The Chairman declared the meeting adjourned sine die at 9:28 p.m.

*

The Chairman, in accordance with Article V, Section i, of the CCCA Bylaws, has announced the regular CCCA general membership meeting in July for 9 July 1971, 8:00 p.m., at the Berkeley Chess Club, Berkeley Central YMCA, 2001 Allston Way, Berkeley.

CURRENT INTERNATIONAL NEWS

By RICHARD R. SHORMAN, CCCA Publicity Director

Mr. Shorman's column consists of exclusive translations for Chess Voice from the original sources, airmailed from Europe and the Soviet Union.

*

Mar-del-Plata, 14 April 1971

Soviet grandmaster Lev Polugaevsky wins brilliantly, scoring 13 out of a possible 15 points. Sharing 2nd and 3rd places are international master Vladimir Savon (USSR) and grandmaster Oscar Panno (Argentina), each totaling 10 points. Fourth with 9½ points is Rumanian grandmaster Florian Georgiu (sic). Other participants are Miguel Najdorf (Argentina), Walter S. Browne (Australia), Henrique Mecking (Brazil) and Quinteros (Argentina), who tallied 9, 7½, 8, and 9 points respectively.

Havana (Capablanca Memorial), March 1971

Vlastimil Hort (Czechoslovakia) won with a final tally of 11½ out of 15 points possible. Second was E. Geller (USSR) with 10½ points, and G. Tringov (Bulgaria) scored 10 points to place third. They were followed by Donner (Holland)--9½, Gipslis (USSR)--9, Parma (Yugoslavia)--8½, etc.

Tallin, 1971

First and second honors were shared by Paul Keres and Mikheil Tal, who both posted 11½-3½ results. David Bronstein came in third with 11-4. The final placings for the rest of the field were L. Stein--10-5, A. Zaitsev--9½-5½, Ya. Smejkal--8½-6½, G. Barcza and S. Furmen--8-7, I. Nei--7½-7½, A. Vooremaa and Anthony Saily--6-9, H. Westerinen--5½-9½, G. Daskalov--5-10, R. G. Wade--4½-10½, Arthur Bisguier--4-11, and L. Myagmarsuren--3½-11½.



Belgrade, 1971

Women's World Chess Champion Nona Gaprindashvili swept aside all opposition in this international women's tournament, posting the spectacular score of 13-0 (!). Her unusually fine victory was reinforced by the quality of her play.

White: Gaprindashvili. Black: Vreken. Belgrade 1971. Sicilian Defense. 1 P-K4, P-QB4; 2 N-KB3, N-QB3; 3 P-Q4, PxP; 4 NxP, P-KN3; 5 P-QB4, N-B3; 6 N-QB3, NxN; 7 QxN, P-Q3; 8 B-K3, B-N2; 9 P-B3, 0-0; 10 Q-Q2, P-QR3; 11 R-B1, B-Q2; 12 P-QN3, Q-R4; 13 B-K2, P-QN4; 14 P-B5, P-N5; 15 N-N1, B-K3; 16 0-0, KR-B1; 17 P-B6, N-K1; 18 B-Q3, N-B2; 19 P-B4, P-B4; 20 P-QR3, BxP; 21 PxNP, Q-R7; 22 PxP, N-Q4; 23 PxF, PxF; 24 BxNP, QR-N1; 25 B-KB5, R-B2; 26 B-K6ch, K-B1; 27 B-Q4, RxB; 28 BxBch, KxB; 29 Q-K1, R-N1; 30 Q-N3ch, K-R1; 31 Q-R4ch, K-N2; 32 Q-N5ch, K-R1; 33 Q-R6mate.

(Continued on page 12.)

***UNDERSTANDING CHESS LAWS AND TOURNAMENT DIRECTION:
THE PROBLEM OF THE TEMPORARY ADJUDICATION (PART 2)***

By MARTIN E. MORRISON

Member, USCF Tournament Director Certification Committee

Questions and comments from readers on chess laws and tournament direction are welcomed. Contact the columnist at P. O. Box 1622, Oakland, CA 94604; (415) 582-1973.

*

In my last column I surveyed three of the major systems used for temporary adjudication: the "All-Draw," the "Discretionary," and the "All-Win." In this column I shall complete the survey with an analysis of three others.

IV. THE "KASHDAN" SYSTEM. "The Director asks each player in an adjourned game whether he is playing for a win or draw. If both are satisfied with a draw, then that is the result, and the game is recorded normally. If one player states that he is content to draw, the director pairs the first player as if he had won, and the second as if he had drawn. When the game is actually played off, both players will of course do the best they can. The director's requests are only to help him pair the following round, and should have no impact on the actual game. If both players state they are playing for a win, then the director is justified in pairing both as if they had won. They will then have presumably stronger opponents in the following round, but in effect they have asked for it." Grandmaster Kashdan's system is an ingenious refinement of the "All-Win" System. Of course, the director must ask his questions of each player individually and in private; otherwise Article 18.1 of the FIDE Laws would be violated. Some have reservations about the Kashdan procedure, though, in that it does not seem to conform to Article 17a.1 in the manner of offering draws, brings in a third party (the director), who may affect the result of the game and who may bring about a result outside a direct agreement between the two players. Mr. Harkness's objection to the "All-Win" System would presumably be applicable here as well. On the practical side, Gordon S. Barrett, a director in Southern California who uses the "Kashdan" System regularly, reports excellent results with it, there having been in his experience only two games out of 126 in which both players maintained that they were playing for a win. (Los Angeles Times, 10 August 1969; Terrachess, 8 December 1970, p. 1066.)

V. THE "PEASE" SYSTEM. Because the "Kashdan" System permits a temporary adjudication to be off one full point (in the case where both players say that they are playing for a win, and one subsequently loses), Ronald Pease, a director in Southern California, has proposed the following system. "If a player is playing for a draw he'll be paired as a draw. If he is playing for a win, the director should assign him $3/4$ of a point (!) for pairing purposes. Also if the director thinks, after looking at the position, that the player playing for a draw (if the other player is playing for a win) has a lost position, he should assign him $1/2$ of a point, for pairing purposes. This system would have the following effect (particularly in large tournaments): Many times players with unfinished games would land in the same group & would be paired . . . against one another." Although this system eliminates the defect in the "Kashdan" System it proposes to correct, the other reservations remain. (Southern California Chess Players News, October 1970, p. 3.)

VI. THE "BCF" SYSTEM. The British Chess Federation has an interesting temporary adjudication system which combines aspects of the "Discretionary" and "Pease" Systems. The seventh Rule for BCF Swiss System Tournaments reads in part: "For the purpose of making a draw pairing for the next round, provisional adjudications of unfinished games are best classified as follows: Probably Win (1), Probable Draw ($1/2$), Probable Loss (0), Possible Win (1-), Possible Draw ($1/2-$). This often enables players with unfinished games to be used as floaters odd men in the same score group to be transferred to another score group." Both the "Pease" and "BCF" Systems recognize a category between 0 and $1/2$ and between $1/2$ and 1, but whereas the "Pease" System uses the player's evaluation of his own game as a basis for temporary adjudication, the "BCF" System attempts a refinement of the "Discretionary" System. (Year Book of Chess, 1967-1968, p. 36.)

Directors' and players' comments on and experiences with any of these or other systems of temporary adjudication will be welcomed for future columns.

***GLEANINGS FROM GLIGORIĆ:
AN EXCLUSIVE INTERVIEW WITH INTERNATIONAL GRANDMASTER SVETOZAR GLIGORIĆ
(PART 2)***

By MARTIN E. MORRISON and ELWIN C. MEYERS, Chess Voice Editors



In the last issue we presented Part I of an interview Grandmaster Gligoric, who then spoke of various aspects of international chess competition and of his own chess career. In this concluding Part he reveals his personal ambitions and non-chess interests, conveys his impressions of the Bay Area, and gives penetrating thumbnail sketches of prominent international players.

*

Q. What other interests do you have besides chess?

A. My only salary is from journalism. I've been with Radio Belgrade for nine years, and I write for a daily and a weekly. I do reportages, columns on foreign policy. I've been to many countries. Music is my favorite avocation. I am not an expert. I would like to be a musician more than anything else.

Q. Yugoslavia certainly does have many outstanding musical groups--I Solisti di Zagreb, for example.

A. Yes, I know them slightly.

Q. Is this your first visit to the Bay Area, by the way?

A. No, I was here for five days in 1952 during my first visit to the US, when I played in a small tournament in Beverly Hills organized by the late Hermann Steiner. I liked the Bay Area very much. Then I believe I was here for a short while after the Piatigorsky Tournament in 1963. This time I arrived at night by air to San Francisco, and I was really surprised at the intensity of the lights--not just the number, but the intensity. I knew at once I wasn't in Europe.

Q. When we interviewed Larry Evans last year ["Larry Evans Speaks Out," An Interview by Martin E. Morrison and Elwin C. Meyers, Chess Voice, April-May 1970, pp. 12-14], we had him give some thumbnail sketches of prominent players. Perhaps we could have you do the same. To begin with, what would you say about Mr. Evans himself?

A. A very good player. He has a very broad knowledge of openings. He doesn't play sufficiently often to get the best results. He is a half-professional like me. However, I'm more professional now than I was two years ago, because there are so many strong players who are devoted to chess and knowledgeable. I can't say whether I approve of the increased demands of chess or not. It's a given fact, and you have to adapt yourself to it.

Q. Bobby Fischer?

A. One of the most gifted players I ever saw. I don't think he's perfect in all phases of the game. It all comes out because he plays so seldom. The way he practices chess it's a real miracle he gets such outstanding results, and that proves him very right to try for the Championship.

Q. Bill Addison, a Bay Area resident?

A. (With a rueful smile) I had a bitter experience with him at the Interzonal. It may have cost me qualifying, because I tried too hard after I lost to him. I was almost ready to give him a draw in our game, but I underestimated him. The Interzonal was a very hard tournament. California is strong, but it is not a center of chess competition. Addison did reasonably well for his first try.

Q. Pal Benkő?

A. Very strong and experienced, but somehow plays less now with less results. Maybe his ambition has diminished, as mine has.

Q. Bernard Zuckerman, who recently acquired his title?

A. I know little about him. I'm glad he got his title. I've heard his knowledge of openings is immense.

Q. Just how important is that, in your opinion?

A. It's not the first condition for success. Huebner doesn't have special strength and has done well, but it is really necessary if a player wants to be among the top twelve or so. Huebner has a lot of time to acquire it, but he needs a lot of time.

Q. What about other Yugoslavian players?

A. They are not in top form now, because they play in too many competitions and get exhausted. Matulovic is the best young player, of course. Some call him J'adoubovic, because he said "j'adoube" against Bilek in the previous Interzonal after he had touched a piece, then realized it was a mistake. Another problem is that it is unfortunate young players have difficulty getting their international titles when we know they are of master strength. My second has been waiting for eight years and now has been invited to a tournament in Havana.

Q. Finally, how do you view your own future in chess?

A. I count I have maybe ten years or more that I can play on even terms with

the best grandmasters—or almost on even terms. I think I can improve too in the meantime. I think I play better now and might play even better next year, but whatever I do, the others do the same.

Q. By the way, as a matter of protocol, what is the correct pronunciation of your name?

A. The accent is on the first syllable, and the final c is soft. It sounds like "itch," not "ick."

*

Now, a few of our own observations on the interview and the grandmaster. Mr. Gligoric's manner is that of a diplomat, cordial and careful to avoid offense. It would be difficult to imagine him in an argument. His English is excellent, lightly accented and occasionally a little odd syntactically, yet always understandable, and he possesses a vocabulary exceeding that of a good number of native Americans. His intelligence becomes apparent in many ways—his previously mentioned vocabulary, careful deliberation, and precise answers. In fact, the best word to describe him is "precise." When confronted with general questions, he responds by narrowing the question to specifics. His mind is orderly, logical—eminently suitable for his chosen fields, chess and journalism.

CHESS VOICE BEST GAMES CONTEST NO. 2

Because of the early release of this issue, the deadline for Contest No. 2 has been extended. Note also that the contest rules have been liberalized to include all Chess Voice readers (not just CCCA members) and all games played over the last six months preceding the closing date of the contest (not just a tournament sponsored by the CCCA or a CCCA affiliate).

Of all games submitted by 15 June, a Best Game will be chosen from each of the following rating groups: Master/Expert, Class A, Class B, Classes C/D/E/Unrated. All four Best Games will be published in the October–November issue of Chess Voice, AND ONE OF THEM, CHOSEN AT RANDOM, WILL BE PUBLISHED WITH THE COMPLETE ANALYSIS OF INTERNATIONAL GRANDMASTER LARRY EVANS.

Submitted game scores must be legible and accurate and must include the following information: players' full names, date of game, name of the event in which the game was played, and players' USCF ratings at the time of the game, if known. Games must have been played in an event having taken place no more than six months preceding the closing date of the contest. Submit as many games as you like—you have nothing to lose. The contest is open to all Chess Voice readers.

Send entries to John A. Wallan, Chess Voice Best Games Contest Judge, P. O. Box 2002, Oakland, CA 94604.

Best Games from Contest No. 1, with Mr. Evans's analysis of one, will appear in the next issue.

CURRENT INTERNATIONAL NEWS

(Continued from page 9.)

Leningrad, April 1971

Former Women's World Chess Champion Ludmila Rudenko shared top honors in the 1971 Leningrad Women's Championship, her ninth victory in this event.

White: Ludmila Rudenko. Black: Natasha Zubova. Leningrad, 1971. English Opening. 1 P-QB4, N-KB3; 2 P-KN3, P-KN3; 3 B-N2, P-Q4; 4 PxP, NxP; 5 N-QB3, N-N3; 6 N-B3, B-N2; 7 P-KR4, O-O; 8 P-R5, N-B3; 9 PxP, RPxP; 10 P-Q3, R-K1; 11 B-R6, B-R1; 12 Q-Q2, P-R4; 13 B-B8!, resigns.

Moscow, 31 March 1971

Former World Champion Tigran Petrosian scored a resounding victory, a full three points ahead of his nearest rival, in an exceptionally strong rapid transit tourney held at the Central Chess Club of the Soviet Union in Moscow. Tigran Petrosian topped the field with a $14\frac{1}{2}$ - $\frac{1}{2}$ score, drawing only with A. Zaitsev. Viktor Korchnoi ($11\frac{1}{2}$), Y. Balashov ($10\frac{1}{2}$), A. Karpov, Mikhail Tal, R. Kholmov ($9\frac{1}{2}$), E. Vasyukov, Mark Taimanov ($8\frac{1}{2}$) followed in the sixteen player field.

Saraevo, April 1971

Grandmasters Bobotsov, Bronstein, and Matulović tied for first place at the Saraevo international tournament, posting totals of 9 points each out of a possible 14. The comparatively low winning score reflects the unusually large number of draws (82!) among the participants.

Niagra Falls, April 1971

Seventeen-year-old Kenneth Rogoff won a tournament held in Niagra Falls this month.

A POTPORRI OF PUBLICATIONS

1. ISAAC I. KASHDAN, ED., AMSTERDAM 1970: THE 10TH IBM TOURNAMENT (NEWBURGH, NEW YORK: UNITED STATES CHESS FEDERATION, 1971?), 24 PP., INDEX TO OPENINGS, CROSSTABLE, INTRODUCTION, 120 GAMES, COMMENTS ON GAMES. \$1.75 FROM USCF, 479 BROADWAY, NEWBURGH, NY 12550.

2. ISAAC I. KASHDAN, ED., BUENOS AIRES 1970 (NEWBURGH, NEW YORK: UNITED STATES CHESS FEDERATION, 1971?), 36 PP., CROSSTABLE, CUMULATIVE TOTALS, INDEX TO OPENINGS, INTRODUCTION, 153 GAMES, COMMENTS ON GAMES. \$2.00 FROM USCF.

International Grandmaster Isaac I. Kashdan, of Los Angeles, California, is beyond question one of the top journalists in the chess world today. His weekly column in the Los Angeles Times is noted for its top grade analysis and detailed reporting of chess events. Mr. Kashdan has now begun a series of tournament booklets for the USCF, the first two products of which have just now appeared. They promise that without doubt the series will be indispensable for all players interested in keeping abreast of the most recent developments in the chess world.

The first of these booklets covers the 10th IBM Tournament at Amsterdam, 14 July-1 August 1970. The tournament was a strong one, headed by ten grandmasters among the sixteen participants. World Chess Champion Boris Spassky tied for first after a long pursuit of Lev Polugaevsky. Wolfgang Uhlmann, of East Germany, was third, and Eufim Geller, of the Soviet Union, fourth.

The second booklet covers Fischer's impressive triumph at Buenos Aires in July and August of 1970. Trailing $3\frac{1}{2}$ points behind was the startling USSR player Tukmanov, virtually unknown before the event, but finishing ahead of ten grandmasters. Other participants included Gheorghiu, Najdorf, Reshevsky, Smyslov, and Mecking.

In both books Mr. Kashdan provides the scores of every game played, preceded by a synopsis of the play. An openings index and complete crosstable are supplied for quick reference. Mr. Kashdan has also written general introductions on the often surprising results of these events. The booklets are well made, clearly printed, and of a convenient size for easy use. Reasonably priced, they will be appreciated by anyone interested in the games of today's top players.

3. CCA PUBLICATION SERIES: NUMBERS CURRENTLY AVAILABLE.

- No. 2. "How to Organize a New Chess Club," by Richard R. Shorman, revised by Martin E. Morrison, 2 pp. (15¢).
- No. 3. "Interpretations Made by the Permanent Commission of the FIDE for the Laws of the Game," translated by Martin E. Morrison, 2nd Ed. with References to the FIDE Laws Article Numbers, 4 pp. (15¢).
- No. 4. "Rules for Five-Minute Speed Tournaments," compiled by Martin E. Morrison (revised 28 February 1971), 1 p. (10¢).
- No. 5. Tournament Direction Guide and Manual, by Martin E. Morrison and Elwin C. Meyers, Installments I-VI, 42 pp. (\$3.00). Installments VII-IX are projected for release this summer and will include updated laws material from the 1970 FIDE Congress, a mock pairing of a Swiss tournament, and discussion of modified versions of Swiss pairings, including an original scheme for color allocation in short and even-round tournaments. Only those who order installments I-VI will be entitled to receive further installments. New installments are automatically sent to subscribers with payment due on receipt (50¢ per installment).
- No. 6. "Blankboard Chess," by Albert E. Rackett, 2 pp. (15¢).
- No. 7. "Digest of Tournament Rules and Procedures," by Martin E. Morrison, 4 pp. (25¢).
- No. 8. Projected for release this summer, a tournament book of the Regional Golden Bear Chess Tournament (February 1971) and the 1971 Grand Prix Class Championships (March 1971), to be edited by Richard R. Shorman and Martin E. Morrison. The book will be about 25 pages and has a pre-publication price of 50¢, to be increased after publication.

Send orders to the Editors (address on page 2). The small cost is only to offset the cost of publication. Manuscripts for publication are sought from readers.

4. KENNY THOMAS, ED., JUNIOR CHESS. MONTHLY, \$2.00 PER ANNUM.

This newest magazine to appear in the US coincides well with the recent upsurge in junior activity. Mr. Thomas, a bright and energetic junior player himself, is now an "A" rated player who aspires to be a professional chess player. He has collected a staff of junior Experts to contribute to his monthly mimeographed magazine. Junior players, and others, are invited to subscribe (5390 Laurie Lane, Memphis, TN 38117).

LATEST OFFICIAL RATINGS OF CCCA MEMBERS

The following are the official USCF ratings of all CCCA members through the "USCF Rating Supplement," published in the March issue of *Chess Life & Review*. CCCA members through the 1 April assessment period with USCF ratings are listed. Please notify the Editors of any additions or corrections.

SENIOR MASTER 2400 & above, MASTER 2200-2399, EXPERT 2000-2199, CLASS A 1800-1999, CLASS B 1600-1799, CLASS C 1400-1599, CLASS D 1200-1399, CLASS E Below 1200.

* indicates provisional rating based on 10-25 games. Such ratings are less reliable than established ratings. # indicates rating based on 4 to 9 games. Such ratings are highly unreliable. Players who have played less than 4 games are not listed.

Total number of CCCA members with USCF ratings: 178 (34%).

TOP TEN: (1) J Acers 2309, (2) D Forthoffer 2106, (3) A Hanak 2093, (4-5) D Dean, R Ervin 2086, (6) W Orr 2069*, (7) J Iwashita 2061, (8) R Roizen 2051#, (9) C Barnes 2042, (10) M Ewell 2033.

ALAMEDA CC (3): A Hall 1716*, M Hubbard 1232#, T Reynolds 1576#. ANTIPOCH CC (5): R Guzman 1491*, H Lewis 1675, R Oylar 1661, F Ulrich 1794, C Vail 1602. BECHTEL CC (3): A Hanak 2093, A Saguisag 1842, R Saguisag 1932. BERKELEY CC, INC. UC DIV. (39): T Briggs 1804, M Cooper 1642*, S Cross 1993, D Dean 2086, E Delgado 1244#, M Devitt 1537*, M Donald 1248#, P Enright 1869, R Ervin 2086, G French 1808, G Garcia 1640, D Gosiewski 1687, R Guzman 1491*, R Hansen 1856, G Harcus 1336*, L Hughes 1904, C Johnson 1557, J Kasprk 1233#, B Keeney 1702#, T Leschander 50#, D Levine 1562#, M McNow 1692, S Maurer 1389*, M Maloney 1519*, E Meyers 1699*, M Pool 1323*, P Prochaska 1637*, K Roberson 1576, R Roizen 2151#, N Rosen 1761#, R Shiflett 1533*, L Stansby 1779#, C Sullivan 1912#, J Toulouse 1898, M Turnbull 1626, R Uomini 1765, J Wallan 1948, C Wilson 1746, E Yeung 1610. CAFE MIDI CC (1): W Myers 1692. CHADOT COL. CC (2): K Lowless 1795, R Weinberg 1412#. COL. OF THE SEQUOIAS (1): C Fotias 1586. CONCORD CC (9): R Guzman 1491*, G Harcus 1336*, M McNow 1692, J Moore Jr 1632*, W Noble 1593*, K Templeton 1034#, F Ulrich 1794, C Vail 1602, J Weiler 1456. DVI CHESS INT. GROUP (2): H Chappel 2006*, C Comstock 1954*. EVERYMAN CC (1): J Rowell 1851. FREMONT CC (6): K Jackson 1631*, B Jansen 1586*, G MacLeod 1574, W Orr 2069*, R Pellerin 1620#, H Poschmann 1736. HAYWARD CC (3): E Bartholomew 1613, L Hopkins 1329#, E McNally 1865. LIVERMORE CC (12): R Anderson 1328*, H Barnett 1752, P Barry 1829#, G Boer 1790, R Cooper 1492*, K Giallanza 1464*, W Nelson 1884*, G Roust 1696, J Shearer 1993, D Smith 1824*, K Trigger 1343*, J Willows 1531#. MARIN CC (4): K Burns 1593, T Hansen 1129#, B Kraft 1937, L Post 1817. MARTINEZ CC (2): R Nace 1684*, R Swanson 1960. MONTEREY PEN. CC (3): R Atkinson 1594, M Ewell 2033, W Kennedy 1509. OAKLAND CC (23): J Acers 2309, R Alexander 1837, T Anderson 1517*, C Barnes 2042, M Costa 1732, M Crossland 1472*, R Cuneo 1775, D Forthoffer 2106, J Friedman 1392#, J Kasprk 1233#, G Kobliska 1690#, L Lane 1229#, M Lee 1589*, R Lee 1446*, C Maddigan 1991, E Meyers 1699*, R Ng 1834, S Quen 1847*, E Rubsamen 1585#, W Sprague 1850, J Wallan 1948, G Weber 1805, M Weber 2027. ORINDA CC (4): A Boyd 1674*, D Campbell 1707, D Sherman 1478#, D Stone 1799#. PIEDMONT HILLS H. S. CC (2): J Brittain 1368#, A Mock 1585#. RICHMOND CC (2): D Claudio 1707#, L Trotter 1520. SAN JOSE CC (30): W Adams 1892, W Allen 2008, R Belcher 1353#, T Byrne 1786#, M Carney 1508#, A Critchlow 1787, Francis Crofut 1817, Fred Crofut 1833, R Delashmutter 1622, D Gordon 1192#, R Gordon 1731, J Iwashita 2061, D Lieberman 1672, R Merritt 1255#, H Mohrmann 1890, E Mueller 1878, R Mullins 1477*, D Myers 1756, L Nezhni 1883, C O'Brien 1473, F Penoyer 1708, J Peterson Jr 1828, E Rosenthal 1536, R Roubal 1808, G Tenme 1734, J Thomas 1502, M Tomey 1416#, J Weisick 1585, C Whelan 1559#, K Wiens 1483#. SANTA ROSA CC (5): R Dusatko 1472#, C Falbo 1674, L Henderson 1866, D Johnson 1741, S Kornher 1958. UC DAVIS CC (2): D Olmsted 1712, S von Oettingen 2030. VALLEJO CC (6): F Harris 1906, G Henderson 1719*, J Hug 1572, L O'Doan 1705, G Rasmussen 1884, N Wood 2029. VISALIA CC (1): C Fotias 1586. WALNUT CREEK CC (7): S Bass 1815#, G Bigelow 1543*, S Bodner 1460#, D Hall 1913#, S Mujahed 1596*, C Vail 1602, J Weiler 1456.

CORRECTION

The results of the CCCA's Regional Golden Bear Chess Tournament, held 12-14 February, have been corrected since the story reported in the last issue. The correction involves only the C Division. The corrected results are: Michael W. Tomey, 1st C, \$70; Claud D. McHorse, Anthony Mock, and Kenneth C. Wong, 2nd-4th C, \$6.67 each.

CCCA AFFILIATE DIRECTORY

(Current number of CCCA affiliates: 38; members: 521.)

For information on affiliation to the CCCA and its benefits, contact the Editors (address and telephone number on page 2). THE FOLLOWING ARE NOT MAILING ADDRESSES.

- ALAMEDA CC: M, 7-11 p.m.; McKinley Pk. Rec. Cen., Walnut St. & Buena Vista Ave.
- ALAMEDA NAS CC: Inactive at present.
- ANTIOCH CC: Inactive at present.
- BECHTEL CC: W, 7:30 p.m.; 11th Fl. Conf. Rm., 50 Beale St., San Francisco.
- BERKELEY CC: F 7-11 p.m.; Palm Rm., Berkeley Cen. YMCA, 2001 Allston Wy.
- BERKELEY CC, UC DIV.: F, 7-11 p.m.; Palm Rm., Berkeley Cen. YMCA, 2001 Allston Wy.
- BERKELEY LIVE OAK CH. GP.: M, 7-10:30 p.m.; Live Oak Rec. Cen., 1301 Shattuck Ave.
- BERKELEY SEN. CEN. CH. GP.: TU, 9 a.m.-12 m.; Sen. Cen. of Berkeley, 1849 Univ. Ave.
- CAFFE MIDI CC: Caffe Midi, 5048 No. Maroa Ave., Fresno.
- CAPITAL CITY CC: W, 7:30-11 p.m.; Clunie Clubhouse, Alhambra & "F" Sts.
- CASA ALVARADO CHESS CEN.: TU-F, 4-12 p.m., SA-SU, 2-12 p.m.; Casa Alvarado Chess Cen., 467 Alvarado St., Monterey.
- CATERPILLAR CC: Inactive at present.
- CHABOT COL. CC: M, 6-10 p.m.; Rm. 830, Chabot Col., 25555 Hesperian Blvd., Mt. Eden.
- COL. OF THE SEQUOIAS CC: TU, 12 m.-1 p.m.; Rm. 338, Col. of the Sequoias, Mooney Blvd., Visalia.
- CONCORD CC: F, 7:30-11 p.m.; Concord Sen. Citizens Cen., 2974 Salvio St.
- DEUEL VOCATIONAL INSTITUTION CHESS INT. GROUP: M & F, 7-9:30 p.m.; Deuel Vocational Institution, So. Kasson Rd., Tracy.
- EVERYMAN ATHLETIC CLUB CC: Inactive at present.
- FREMONT CC: TH, 7-11 p.m.; Westridge Pk. Comm. Cen., 36200 Fremont Blvd.
- HAYWARD CC: M & F, 7:30-12 p.m.; HARD Bldg., Palma Ceia Pk., Decatur Wy.
- LIVERMORE CC: 1st & 3rd F, 7:30-11 p.m.; Old Lib., Carnagie Bldg., 4th & "J" Sts.
- MARIN CC: TU night; Tamalpais Valley Meth. Ch., Ash & Marin Ave., Mill Valley.
- MARTINEZ CC: M, 7:30; Martinez Hacienda, 1111 Ferry St.
- MECHANICS' INSTITUTE CC: M-F 9 a.m.-11 p.m., SA 9 a.m.-12 p.m., SU & HOL. 9 a.m.-10 p.m.; Mechanics' Institute Bldg., 4th Fl., 57 Post St., San Francisco.
- MONTEREY PEN. CC: TH, 7:30 p.m.; Casa Alvarado Chess Cen., 467 Alvarado St., Monterey.
- OAKLAND CC: F, 7-11:30 p.m.; Multipurpose Rm., Lincoln Elem. Sch., 225 Eleventh St.
- ORINDA CC: TH, 7:30 p.m.; St. Stephen's Epis. Ch., St. Stephen's Dr. & Via Las Cruces.
- PIEDMONT HILLS H. S. CC: M-F, 2:30-4 p.m.; Rm. E14, Piedmont Hills H. S., 1377 Piedmont Rd., San Jose.
- PLEASANT HILL CC: TH 8:00 p.m.; East West Cen., 237 Gregory Ln.
- RICHMOND CC: F, 7 p.m.; Our Lady of Mercy Ch., 301 W. Richmond Ave., Pt. Richmond.
- ST. MARY'S COL. CC: St. Mary's Col. of Calif., Moraga.
- SAN JOSE CC: W, 7:30 p.m.; San Jose Cen. YMCA, 1717 The Alameda.
- SAN QUENTIN CC: Calif. State Prison.
- SANGER CC: Cafe Midi, 5048 No. Maroa Ave., Fresno.
- SANTA ROSA CC: F, 7-10 p.m.; Santa Rosa Jr. Col., 1501 Mendocino Ave.
- UC DAVIS CC: M, 7-11 p.m.; Games Rm., Mem. Union, Univ. of Calif., Davis.
- VALLEJO CC: F, 7:30 p.m.; Vallejo Comm. Cen. Bldg., 225 Amador St.
- VISALIA CC: F, 7:30 p.m.; Rec. Pk. Bldg., 345 No. Jacob St.
- WALNUT CREEK CC: TU, 7:30 p.m.; Sen. Citizens Hospitality House, 1385 Civic Dr.
- WESTERN ADDITION CC: TU, 7:30 p.m.; Family Serv. Agcy., 1010 Gough St., Cathedral Hill, San Francisco.

ACCUMULATED CCCA CALIFORNIA STATE CHESS CHAMPIONSHIP QUALIFYING POINTS

All points up to and including the 1971 Grand Prix Class Championships (27-28 March) have been totaled. See pages 9-10 of the June-July 1970 Chess Voice for the details of this system for determining the CCCA's Finalist in the California State Chess Championship. For upcoming tournaments awarding CCCA Qualifying Points, see page 3.

Craig N. Barnes	7.63	Michael R. Ewell	2.00	Dr. Benjamin L. Gross	1.50
Keith Guertner	4.00	Takashi Kurosaki	2.00	William Noble	1.50
Jeff Kent	3.50	Norman F. Miller	2.00	Guillermo Rey	1.50
Dennis L. Waterman	3.50	John L. Peterson	2.00	Donald Stone	1.50
Stephen G. Quen	3.00	Lee Henderson	1.88	William A. Myers	1.00
Kim S. Commons	2.50	Garret L. Boer	1.50	Raymond J. Cuneo	0.38
Charles Pardini	2.50	Donald F. Dean	1.50		
Marcos B. Costa	2.25	George F. French	1.50		

**DON'T MISS THE
1971 CALIFORNIA CLASS CHAMPIONSHIPS
(A State Tournament)**

DATE: 29-31 May 1971.
PLACE: Hotel Californian, Van Ness Ave. and Kern, Fresno.
ENTRY FEE: \$15 (\$13 if mailed by 24 May), \$10 for juniors.
MEMBERSHIP: USCF and CSCF required.

ROUND 1: 11:00 a.m., Saturday, 29 May.

GUARANTEED PRIZES: \$800.00 plus.

1st	\$300.00	2nd	\$200.00	3rd	\$100.00
4th	\$ 50.00	1st Ex	\$100.00	2nd Ex	\$ 50.00

Sections A, B, C, D, and E: \$250.00 each if at least 20 players.

TOURNAMENT DIRECTOR: Gordon S. Barrett.

ADDITIONAL ACTIVITIES: California State Rapid Transit Championship (29 May, 8:30 p.m.), Banquet (30 May, 7:30 p.m.), Annual CSCF Meeting (30 May, after banquet).

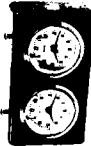
NEXT CCCA GENERAL MEMBERSHIP MEETING: Friday, 9 July, 8:00 p.m., Berkeley Chess Club, Palm Room, Berkeley Central YMCA, 2001 Allston Way, Berkeley. Every member of the CCCA, i.e., every person who is certified by the appropriate officer of a chess club or organization affiliated to the CCCA (listed on page 15) to be a member or officer of the affiliate, has full privileges of debate and voting. Nonmembers are welcome.

NEXT USCF TOURNAMENTS OF THE CCCA AND ITS AFFILIATES: See page 3.

DEADLINE FOR CHESS VOICE BEST GAMES CONTEST NO. 2: 15 June. See page 12.

DEADLINE FOR CHESS VOICE PROBLEM-SOLVING CONTEST NO. 14: 15 June. See page 6.

CHESS CLOCKS: Lowest price in the US; no waiting weeks for delivery. BHB Style W, tan, unbreakable plastic case, 6" x 3" x 1 1/2"; two-year guarantee from the manufacturer; "the world standard for dependable quality and durability at a moderate price; used at the most recent Interzonal Tournament" (USCF). ONLY \$12.50. By immediate pickup from Leonard F. Trotter, Richard R. Shortman, Martin E. Morrison (addresses and telephone numbers on page 2), or John R. Moore, Jr. (1390 Kansas Circle, Concord, CA 94521, 682-2438 or, at work in San Francisco, 556-6885); or by mail from Mr. Trotter only (add \$1 postage and insurance for addresses within Central California).



POSTMASTER: SEND POD FORM 3579 TO:
Editors

Central California
Chess Association
Post Office Box 1622
Oakland, California 94604
Telephone: (415) 582-1973

Richard Lee
Mag. Ed., CFNC
2500 Wallace St., #2
Oakland, Ca. 94606

NEXT AFFILIATE ASSESSMENTS DUE: 1 June with a grace period of two weeks allowed for payment. Appropriate officers of each affiliate should send 20¢ per club member, along with a list of the names and addresses of the affiliate's members, to the CCCA Treasurer (address on page 2). Fines as much as \$2.00 will be levied for delinquent payment without a valid excuse.



USCF MEMBERSHIPS AT A 20% DISCOUNT, ONLY FOR CCCA MEMBERS OR THOSE PLAYERS JOINING THE USCF AT A CCCA-SPONSORED TOURNAMENT: \$4 (under 21), \$8 (21 and over) per annum, new or renewal. Others may join at the regular rate of \$5 or \$10, respectively. Send Chess Life & Review subscription, eligibility for a USCF (national) chess rating, and discounts on chess books and equipment. **CSCF MEMBERSHIPS:** \$2.50 (under 21), \$5 (21 and over) per annum from CSCF Treasurer Dr. Ralph R. Hultgren, 1501 LeRoy Avenue, Berkeley, CA 94708. Benefits include a bimonthly California Chess Reporter subscription, use of a CSCF Rating Card (to keep track of your approximate updated USCF rating), and eligibility for qualifying Points toward becoming the CCCA's Finalist in the California State Chess Championship.

ALL CHESS PLAYERS ARE STRONGLY URGED TO BECOME MEMBERS OF THE UNITED STATES (USCF) AND CALIFORNIA STATE (CSCF) CHESS FEDERATIONS.