

CHESS VOICE

VOLUME 18, NUMBER 1

APRIL - MAY 1985

PRICE: \$2.00

**UNDER NEW
MANAGEMENT**

IS THIS A PICTURE OF?

1. The winning move.

2. Time pressure.

3. A CalChess meeting.

4. All the above.



CHESS VOICE



CalChess

NORTHERN CALIFORNIA
CHESS ASSOCIATION

CHESS VOICE is published six times a year by the Northern California Chess Association. Single copies are available at \$2 and issue from the editor.

Opinions expressed in this publication are those of the bylined contributors or the editor of CHESS VOICE. They do not represent the official views of the Northern California Chess Association unless specifically identified as such.

CHANGE OF ADDRESS

When you move, the Post Office neither forwards the magazine nor notifies us. Any address changes should be sent to CALCHESS c/o Hans Poschmann, 4621 Seneca Park Ave., Fremont, Calif. 94538. Please indicate your old and new address.

CAL CHESS SUBSCRIPTIONS

A one year subscription is \$8 for all adult Northern Californians and subscribers out of state. This provides the right to participate in CalChess required tournaments.

Northern California juniors may subscribe for \$7. A junior is anyone 17 or under at the time of the subscription.

HOW TO BECOME AN AFFILIATE

Any Northern California chess club may become an affiliate for \$10 per year. This includes a subscription to CHESS VOICE and entitles the club to participate in CalChess team and individual championships.

ADVERTISING RATES

Flyers \$25 (you print); \$55 (you provide master, we print); \$75 (you provide copy, we design & print). Full Page: \$40; Half Page: \$20; Quarter Page: \$10; Eighth Page: \$5. Camera ready copy.

Chairman:	Bryce Perry
Vice-Chairman:	Andy Lazarus
Secretary:	Mike Goodall
Treasurer:	Douglas Young
Past Chairman:	Art Marthinsen
Youth:	Vacant
Club Matches:	Ray Orwig Trendell Ball
Tournaments:	Ed Chang
Clearinghouse:	Art Marthinsen
CalChess:	Hans Poschmann

CalChess is the USCF state chapter for Northern California

CHESS VOICE STAFF

Editor:	Dan McDaniel
Associating with the editor:	Carol McDaniel
Publisher:	Hans Poschmann
Photos:	Richard Shorman
Staff:	The usual gang of idiots.

COVER

Photo by Richard Shorman. Posing dramatically is Charles Pigg and Tony "The Terror" LaTorre. The scene is fake. The idea is to get you to read the magazine.

THANKS

Special thank-yous go to all the people who are working to make CHESS VOICE a going concern again. Mike Goodall, Bryce Perry and Hans Poschmann get credit for financing this first issue until we are back on our feet again.

There are others too, who wish to remain anonymous. Thank-you one and all.

* * * * *

Who is this mysterious new editor of CHESS VOICE?

Why, he is the one with the green and yellow chess set.

death claims chess great

Death claimed one of the good guys.

Isaac Kashdan, International Grandmaster and chess editor of the Los Angeles Times for nearly 30 years, died in West Los Angeles after a long illness. He was 79.

An IGM since 1932, Kashdan was a seven-time captain of the U.S. Chess Olympic team and a judge at many international chess tournaments, including the 1st and 2nd Piatigorsky Cup, and the famous Lone Pine tournaments.

In the early 1930's, Kashdan was one of the handful of legitimate contenders for the world championship, who was continually avoided by then champion Alexander Alekhine.

He will be missed.

(W) G. Stahlberg
(B) I. Kashdan

Hamburg Olympics, 1930

1 d4 Nf6
2 c4 e6
3 Nc3 Bb4
4 Qb3 c5
5 dc Nc6
6 Nf3 Ne4
7 Bd2 Nc5

Regaining the pawn with tempo.

8 Qc2 0-0
9 e4

According to Reuben Fine, the correct move was 9 a3.

10 0-0-0 b6
If 10...Bc3; 11 Bc3 Qf4; 12 Nd2 Qf2; 13

b4 and black must lose a piece. Now the knight can escape.

11 Bd3 a5
12 Kbl Qg6
13 Rhg1

The wrong rook.

14 Be3 Ba6
15 Qd3 Nd3
16 bc Bc3

All this to hold onto a pawn?

d5
According to Walter Korn, this is typical of Kashdan's style.



ISAAC KASHDAN

After simplification, white's position will be weaker than ever.

17 ed Qd3
18 Rd3 Bc4
19 Rd2 Bd5
20 Bb6

Not much choice. If he doesn't capture, he is material down. If he does, file is opened.

21 Rb2 Rfb8
22 Bc7 a4
23 Bf4 Rc8
24 Rcl Na5
25 Kal Be4 Nb3

0-1

And not a moment too soon, since 26 ab ab; 27 Ra2 Ra2 is mate.

FAMOUS QUOTES

"No matter how many times I look at it, it doesn't work."
-- Dennis Stambaugh

arise dead spirit

An actual issue of CHESS VOICE?

There must be something seriously wrong.

In a massive shake-up, the elitist, special interest group that runs CalChess (this means anyone who bothers to show up at the meetings), elected a new editor in the hope that any magazine is better than none.

This remains to be seen.

But to print a magazine, you must have something to print. This brings us to you.

Do you have:

Tournament results?

Games and annotations?

Long, boring articles?

Short, boring articles?

Entertaining, brilliant, sure fire Pulitzer Prize winning stuff?

Club news?

Local events?

Letters to the editor?

Send it all. We accept anything.

Because this is the "New, Improved CHESS VOICE", the emphasis will be shifted to getting the magazine out on time.

This means we need contributions.

Designate someone from your area or club to gather the news and turn it in. Better yet, do it yourself.

Then when CHESS VOICE arrives without the information you are looking for, you can complain to yourself.

Remember, we can't print what we don't get.

-- Dan McDaniel, Editor

bagged at the Bagby

The 10th Annual Charles L. Bagby Memorial Masters Invitational Championship, a.k.a. the 1985 Northern California (CalChess) State Championship, was won by the two players who have dominated this event the past three years.

International Grandmaster Peter Biyiasas and FIDE Master Paul Whitehead each scored $5\frac{1}{2}$ - $1\frac{1}{2}$ in the strongest state championship in the country, to become co-champions of Northern California.

The Bagby is funded by the American Chess Foundation, with contributions from CalChess and the Mechanics' Institute Chess Club.

There was a total prize fund of \$2000, including \$1400 in point mo-

ney. The average rating of the tournament was 2412 USCF and 2301 FIDE, making it one of the few regularly scheduled tournaments of its kind this side of the Atlantic.

To be eligible, a player must have a Northern California USCF address, live in Northern California between November 15 and January 31, and appear high enough on the top 50 list for Northern California, to be one of the top eight players on that list, and accept an invitation.

The tournament is held in the Mechanics' Institute Chess Club, the oldest chess club in the country, over the last three weekends in January each year.

BAGBY RESULTS

There were two newcomers this year: Loal Davis, recently from Southern California, and Guillermo Rey, the leading Mechanics' chess player.

Each performed creditably in very tough company, bringing to 33 the total number of players who have played in the ten Bagby's.

There are a few players who qualify but decline, so the winner is arguably not the best player in Northern California.

Though extremely generous by most standards, the prize fund is insufficient to draw Olympians Nick deFirmian and Walter Browne. International Masters Julio Kaplan and John Watson regrettably chose not to participate, though John tied for third the only time he played.

The job of organizing and directing the event is made easy each year by the able assistance of Max Wilkerson, the Chess Club director. Assistance was also provided by Alan Glasscoe.

Chess players wish to support this "class" tournament are welcome to make a tax-exempt donation to the American Chess Foundation, P.O. Box 302, Flushing, New York 11358.

Be sure to let Executive Director Allen Kaufman know you want your contribution to support the Bagby.

This tournament is reported in chess publications around the world. Any commercial sponser who is interested in co-sponsoring the Bagby to aquire this publicity should contact Mike Goodall at (415) 548-9082.

-- Mike Goodall

NEW MANAGEMENT

In case you didn't notice, this magazine has a new editor and new hopes. Any contributions in the way of games or anything should be sent to: Dan McDaniel, 2881 Kennedy St., Livermore, Calif. 94550

1-2 Peter Biyiasas	5½	-	1½
1-2 Paul Whitehead	5½	-	1½
3 Richard Lobo	4	-	3
4-6 Jon Frankle	3	-	4
4-6 Guillermo Rey	3	-	4
4-6 Elliott Winslow	3	-	4
7-8 Loal Davis	2	-	5
7-8 Charles Powell	2	-	5

(W) P. Biyiasas

(B) E. Winslow

1	g3	e5
2	Bg2	d5
3	d3	Nf6
4	Nd2	Nc6

Another idea is c5, after which the game would evolve into more classical lines of the King's Indian Reversed.

5	c4	Be6
6	cd	Nd5
7	Ngf3	Be7
8	0-0	0-0
9	Ne4	h6
10	Nc3	Nb6
11	b3	f5
12	Bb2	Bf6
13	Nd2	Rf7

An awkward move. But black voluntarily weakened his king with his 9th move, and now tries for more support on the g-pawn after the threatened exchange of dark bishops.

14	Bc6	bc
15	Qc2	h5
16	Nd1	Qe8
17	Nf3	f4

Normally, when you have the two bishops you wish to open the game. In this instance, it also exposes the black king.

18	Nc3	h4
19	Ne4	hg
20	hg	Bd5
21	Kg2	

Stepping into the power of the bishop, but there are no pawns to use against the pinned knight and white now can use the h-file.

g5

Biyiasas-Winslow

22 Rh1 g4
23 Nfd2 Rd8

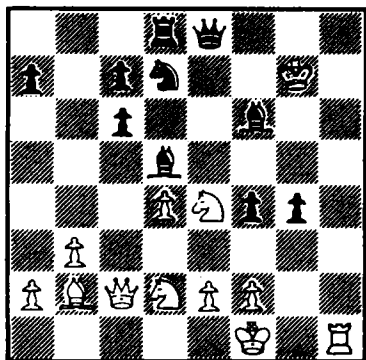
The wrong rook.

24 Rh6 Rh7
25 Rh7 Kh7

The wrong king.

26 gf Nd7
27 Rh1 Kg6
28 Kf1 ef
29 d4 Kg7

From one pin into another. It would be interesting to know how much time was left at this point.



30 Rh7 Kf8
31 Nf6 Nf6
32 Qf5 Qe6
33 Ba3 Rd6
34 Qe6

1-0

(W) P. Whitehead
(B) G. Rey

1 e4 e6
2 d4 d5
3 Nc3 Bb4
4 e5 c5
5 a3 Bc3
6 bc Ne7
7 Nf3 Qa5
8 Bd2 Nbc6
9 Bd3 c4
10 Be2 Bd7
11 Ng5 f6
12 Bh5 Ng6
13 Nh7 Kf7
14 Ng5 fg

It's hard to suggest anything better for black.

15 Qf3 Kg8

Instead, 15...Ke7;
16 Bg6 Raf8; 17 Bg5
and black is mated.

16 Bg6 Rf8
17 Qg3 Ne7
18 Qg5 Qd8

Finally coming home.

19 Qg4 Ng6
20 Qg6 Qh4
21 Be3 Qe4
22 Qe4 de
23 d5 ed
24 Ba7 Rf5
25 Rb1 Bc6
26 Bd4 Kf7
27 Ke2 Ke6

Always blockade with your strongest piece.

28 h3 Ra8
29 Ral Ba4
30 Rhb1

The wrong rook.

Rf7
31 Rb6 Bc6
32 a4 Ra5
33 Ke3 Rf8
34 f3 ef
35 gf Rh8
36 Rgl Kf7
37 e6

The bishop is free.

Ke6
38 Rg7 Rh3
39 Rgb7 Kd6
40 Bf6 Rh6
41 Be7 Ke5
42 Rc7 d4
43 cd Kd5
44 Rd7 Bd7
45 Rh6

1-0

(W) R. Lobo
(B) L. Davis

1 c4 e5
2 Nc3 Nc6
3 g3 g6

4 Rb1 Bg7
5 b4 a6
6 Bg2 d6
7 a4 f5
8 b5 ab
9 ab Nd4
10 e3 Ne6
11 Nge2 e4

Shutting down the bishop.

12 0-0 Nf6
13 f3 Nc5
14 Qc2 Qe7

Overprotection.

15 Nf4 0-0
16 Nfd5 Nd5
17 Nd5 Qd8
18 fe fe
19 Rf8 Bf8

Pesky knight.

20 Bb2 Bg7
21 Bg7 Kg7
22 Be4 Be6
23 Qc3 Kh6
24 Bg2 Bd5
25 Bd5

After 26 d4, black loses the b-pawn or the white center rolls forward...so,

1-0

(W) C. Powell
(B) J. Frankle

1 e4 c5
2 Nf3 Nc6
3 c3 Nf6
4 e5 Nd5
5 d4 cd
6 cd d6
7 Bc4 e6
8 0-0 Be7
9 Qe2 0-0
10 Qe4 Kh8
11 Bd3 f5
12 ef Nf6
13 Qh4 Nb4
14 Bg6 Kg8
15 Bd2 hg
16 Bb4 Nd5

Suprise!

0-1

bad bongos in Berkeley

A record turnout in the 12th Annual People's Chess Tournament increased the prize fund for a record 28 winners in the six categories.

Igor Ivanov and Kamran Shirazi tied for 1st in the Master class with $5\frac{1}{2}$ out of a possible six, winning \$480 each. Bill Orton received \$240 for 3rd.

Nine people tied for best expert with $3\frac{1}{2}$. Gaining \$76 apiece were Philip Cobert, Brad Diller, Jim Waide, Rodolfo Hernandez, Daniel Switkes, Jaroslav Skrenek, Richard Kelson, Phil Coffino and Jerry Walls.

John Baukol (\$335) won the A section, with Kevin Cotreau (\$180) second and Ruy Heim, Gary Luke and Osmundo Reyes getting \$37 each.

Winning the B's were Stu Resnick, Virgil Fuentes and Alex Pascual (\$192). C winners: Jeff Serandos (\$290), Will Clipson and Ashish Mukharji (\$120). Charles Pigg and Kent Hanson got \$205 each for the D's, followed by Pat Bryk, John Candle and Don Koenen (\$24).

(W) I. Ivanov
(B) N. deFirmian

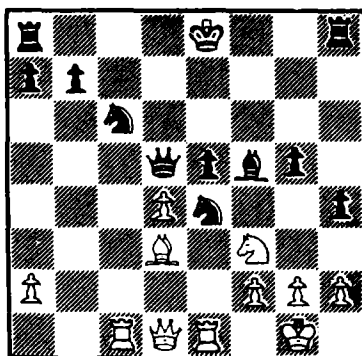
1	d4	Nf6
2	c4	e6
3	Nc3	Bb4
4	Bg5	h6
5	Bh4	c5
6	e3	cd
7	ed	d5
8	Rc1	

The wrong rook. Now don't dispute this note. I was told once that you can always use this since a good case may be argued for the other rook.

9	Nf3	Nc6
10	Bg3	g5
11	Bd3	Ne4
12	O-O	h5
13	bc	Bc3
		h4

Superficially this looks good, but it is positionally bad. Black opens lines on his king in the center.

14	Be5	f6
15	cd	ed
16	c4	fe
17	cd	Qd5
18	Rel	Bf5



19	Ne5	O-O-O
20	Be4	Be4
21	Qg4	Kb8
22	Nc6	bc
23	Re4	Rhe8

The wrong rook. See?

24	Re8	Re8
25	h3	Kc7
26	Qh5	Re4
27	Qh7	Kd6
28	Qh6	Re6
29	Qf8	Kd7
30	Rb1	Re8
31	Qg7	Kd6
32	Rb7	Qf5
33	Qc7	Kd5
34	Qa5	Ke4
35	Qel	

1-0

(W) K. Lawson
(B) S. Schonhaut

1	Nc3	g6
2	b3	Bg7
3	Bb2	c5
4	Qb1	

What's the idea?

5	f4	e5
6	Nf3	Nc6
7	fe	d5
8	e3	Nge7
9	d4	O-O
10	Nd1	Nf5
11	ef	f6
		Bf6

Once again, we see the triumph of better development over strangeness.

12	c3	Qe7
13	Qd3	cd
14	Nd4	Ncd4
15	cd	Bg5
16	Bc1	Bd7
17	Be2	Nh4

Preventing castling.

18	g3	Ng2
19	Kd2	Bf5
20	Qb5	Ne3
21	h4	Bh6

Lightly evading the pawn's attack.

22	Bd3	Nf1
----	-----	-----

Lawson - Schonhaut

23 Kc2 Qe2
24 Kc3 Bd2

Wearing out the exclamation marks.

25 Kb2 Bc1
26 Kc1 Rac8
27 Kbl Bd3

O-1

The next game is reprinted with permission from the Fremont Chess Club Newsletter.

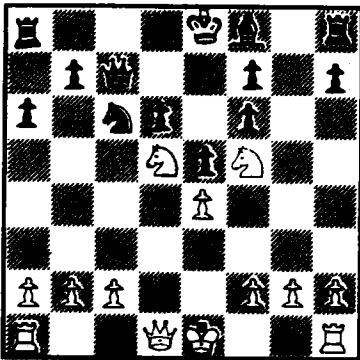
(W) C. Pigg
(B) M. Alioto

1 e4 c5
2 Nf3 d6
3 Bb5 Bd7
4 Nc3 Bb5
5 Nb5 a6
6 Nc3 Nf6
7 d4 cd
8 Nd4 e5

Mistake. Now the white squares become weak.

9 Nf5 Nc6
10 Bg5 Qc7
11 Bf6 gf
12 Nd5

Awesome horses. Black is lost.



13 c3 Qd8
14 Qh5 Rg8
15 Qh7 Rg2
16 h4 Rg6
17 f3 Rg4
Rg6

18 h5 Rg5
19 Nh6 Bh6
20 Qh6 Rg3
21 Nf6 Ke7
22 Nd5 Kd7
23 Qe3

Best move of the game. Protects the f-pawn. and threats are 24 Nb6 and 24 h6.

24 h6 Ke6
25 h7 Rc8
26 Rh6 Qh8
27 Kd2 Rg6
28 Qh6 Rh6
29 Rg1 f6
30 Ne7 Ne7
31 Rg7 Ke7

1-0

(W) J. Goldner
(B) C. Casson

1 e4 c5
2 Nf3 Nc6
3 d4 cd
4 Nd4 e5
5 Nb5 d6
6 Nlc3 a6
7 Na3 Nf6
8 Bg5 h6
9 Bf6 Qf6
10 Nd5 Qd8
11 c3 Bd7
12 Nc4 Ne7

Getting the annoying knight out of there.

13 Nd6

Smothered mate.

(W) K. Shirazi
(B) N. deFirmian

1 e4 c5
2 Nf3 d6
3 d4 cd
4 Nd4 Nf6
5 Nc3 a6
6 f4 e5
7 Nf3 Nbd7
8 Bd3 Be7
9 O-O O-O
10 a4 Nc5
11 Kh1 d5
12 fe Nfe4
13 Be3

Notice how quickly the Masters get the pieces out?

14 bc Nc3
15 cd Nd3
16 a5 Bf5

One holds two.

17 Qd2 Rc8
18 Bb6 Qd7
19 Nd4 Bg6
Rfe8

The wrong rook.

20 Ne2 Qb5
21 Rf3 h6
22 Nf4 Bg5
23 Bd4 Re6
24 h4 Bf4
25 Qf4 Rc7
26 Qd2 Qe8
27 Qf4 Rce7
28 Kh2 Qd8
29 Rg1 Qa5

Displacing his big guy from the coming attack.

30 g4 Qb5
31 Qg3 Bh7
32 h5 Qe8
33 g5 Re5
34 Be5 Re5
35 Qf4 Qe7
36 gh Rh5
37 Rh3 Qe2
38 Rg2 Rh3
39 Kh3 Qh5
40 Kg3 Bd3
41 h7

1-0

GAMES FOR SALE

A collection of the best games from the Berkeley People's can be purchased from Alan Glasscoe, Berkeley Chess Club, (415) 652-5324. Bargain priced.

CLUB NEWS

(This page is for chess club news. If you don't send in the information on time, it makes it difficult to print.)

BELLARMINE CC -

BERKELEY CC -
Bulletins available on People's tournament. See advertisement.

BULLETIN CC -

CARSON CITY CC -

CHICO HIGH CC -

DE ANZA COLLEGE CC -
Currently one of the largest clubs in the area with over 100 members. Our club can be a powerful ally.

FREMONT/TRI CITY -
The club is moving to the Union City library, same time.

FRESNO CC -
Dave Quarve elected president. James Long won \$50.00 with 4½ at the Winter Open, with 1st place. Winning the speed match was Tim Antonetti.

HAYWARD CC -

INDEPENDENCE CC -

KOLTY CC -
The club is interested in rated tournament games. All proceeds go to the Kolty Youth Foundation. Next: 5 round Swiss, on 3/28 to 5/2.

LERA CC -

MECHANICS CC -

OCCIDENTAL CC -

RICHMOND CC -

ROHNERT PARK CC -
See flyer for tournament info.

SACRAMENTO CC -

SAN JOSE COLLEGE -

SAN JOSE UNIVERSITY
Peter Biyiasas, Elliott Winslow, and Renard Anderson tied for 1st in the annual tournament, winning \$333.33 apiece.

SANTA CLARA CC -

SONOMA STATE CC -

U.C. BERKELEY CC -

VALLEJO CC -

YUBA/SUTTER CC -
The association name was officially changed on 2/15 to the "Northern California Chess Federation" as a readiness move in the event CalChess does nothing to remedy its lapse of service to dues paying members. We believe it would be premature to announce our plans until CalChess decided what it is going to do. The next issue of CHESS UPDATE will contain a revised outline of plans for the NorCal Chess Federation.

LIVERMORE CC -

We are discussing the possibility of organizing a rated tournament. Stay tuned.

CHESS VOICE DUES

Does CHESS VOICE owe you back issues?

We apologize on behalf of CalChess, and will extend any member to the correct number of issues owed.

Please write. We wish to regain the confidence of all our readers.

the wrong rook

(W) Rizzitano
(B) Hillery

1	e4	e5
2	Nc3	Nf6
3	f4	d5
4	fe	Ne4
5	Nf3	Be7
6	Qe2	Nc3
7	dc	

Always capture away from the center.

8	Bf4	c6
9	0-0-0	Qa5

The one queen attack.

10	Kb1	Nd7
11	Nd4	Nc5
12	g4	Re8
13	Qf3	Ne6

The square e4 also beckons.

14	Bd3	c5
15	Nf5	Bf8
16	Bc1	Bd7
17	Nh6	gh
18	Qf5	Bg7
19	Qh7	Kf8
20	Bh6	Bh6
21	Qh6	

1-0

(W) F. Del Rosario
(B) R. Hansen

1	e4	c5
2	Nf3	d6
3	d4	cd
4	Qd4	Nc6
5	Bb5	Bd7
6	Bc6	

This is not bad if you don't mind playing without the two bishops.

7	Nc3	Bc6
		Nf6

8	Bg5	e5
9	Qd3	h6
10	Bh4	g5
11	Bg3	Qb6
12	0-0-0	0-0-0
13	Nd2	

More pieces near the king.

14	Nc4	Be7
15	Ne3	Qc7
16	Ncd5	Nd7

The wrong knight.

17	Qa3	Nc5
		1-0

(W) M. Haas
(B) D. Pilgrim

1	e4	c5
2	d4	d6
3	Nf3	cd
4	c3	dc
5	Nc3	Nc6
6	Bc4	g6
7	0-0	Bg7
8	Qe2	Bg4
9	Bf7	

Hello there.

10	Be3	Kf8
----	-----	-----

Still developing.

11	Bb3	Ne5
12	gf	Nf3
13	Rfd1	Bh3

Rooks belong on open files anyway.

14	e5	Nf6
15	Qc4	Ne8
16	Qf4	e6
17	ed	Bf5
		e5

But this opens the white squares again. Instead, 17...Bc3 suggests itself.

18	Qc4	Qd7
19	Qd5	Rd8
20	Bc5	b6
21	Ba3	Nf6
22	Qb7	Ke8

23 Ba4

Another fine mess, Ollie.

1-0

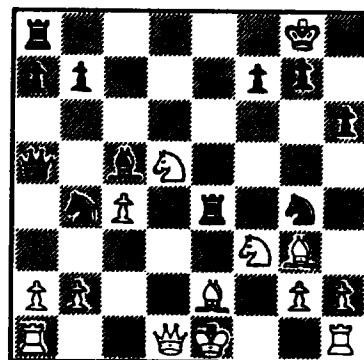
(W) Zentai
(B) Tiszay

1	e4	d5
2	ed	Nf6
3	c4	c6
4	dc	Nc6
5	Nf3	e5
6	Nc3	e4
7	Ng5	Bf5
8	f3	Bc5
9	fe	0-0
10	d3	

If 10 ef Re8; 11 Be2 (11 Ne2 Qd4; 12 Nh3 Ne5; 13 d3 Bb4 wins) Qd4; 12 Nh3 Qh4; 13 Kf1 Re5; 14 Bf3 Rae8 winning.

11	Bf4	Re8
12	Nf3	h6
13	Bg3	Ng4
14	Nd5	Nb4
15	de	Be4
16	Be2	Re4
		Qa5

Who can write notes to stuff like this?



17	Nc3	Rd8
18	Qa4	Nd3
19	Kf1	Ne3
20	Kg1	Nc4

A whipsaw check.

21	Kf1	Ne3
22	Kg1	Ra4

0-1

TOURNAMENT ORGANIZERS**REVISED LIST**

BALL, Trendell
1814 Haynor, Richmond 94801
(415) 234-5336

BOBBIN, Roy
988 Farris Dr., San Jose 95111
(408) 578-8067

GOODALL, K. Michael
2420 Atherton St #6, Berkely
94704, (415) 548-9082

HANSEN, Alfred
1035 Whitwell Rd., Hillsborough
94010

HURT, Jim
LERA Chess Club, P.O. Box 60541
Sunnyvale 94088

LAZARUS, Andy
ASUC/Superb CC 210 Student Union
Berkeley, 94720 (415) 642-7477
days or (415) 658-4454 evenings

MANNING, Tom
2825 Bidwell St., Davis 95616
(916) 753-2538

MARTHINSEN, Art
Ross Valley CC, 3 Locksley Ln,
San Rafael 94901

MAYNTZ, Pat
Kolty CC, 151 S. Leigh Ave.
Campbell 95009 (408) 371-2290

McKEEHAN, Karen
Sacramento (916) 448-1043

MUSTAFA, Mike
22 Deering Ct., Oakland 94601
(415) 436-3883

ORR, John
988 Vallombrosa, Chico 95926
(916) 342-2151

ORWIG, Ray
2030 Roosevelt Ave., Richmond
94801, (415) 237-7956

POSCHMANN, Hans
4621 Seneca Park Ave., Fremont
94538, (415) 656-8505

QUARVE, Dave
833 E. Home Ave., Fresno 93712
(209) 485-8708

ROWE, Dick
378C E. 10th Ave, Chico 95926
(916) 343-2696

SIERRA, Francisco
663 Bucher Ave., Santa Clara
95051, (408) 241-1447

SISTEK, Leonard
1491 Bridge St #41, Yuba City
95991, (916) 671-1533

STEVENS, Dick
Carson City CC, Box 1712
Carson City, Nev. 89701
(702) 883-6597

TAYLOR, Leon
P.O. Box 896, Marysville 95901
(916) 741-3979

WILSON, Donald
3038 E. Willis Ave., Fresno
93726

YOUNG, Douglas
3788 Malibu, Sacramento 95826
(916) 361-7092

YUDACUFSKI, Ted
Monterey Chess Center, Box 1308
Monterey 93940, (408) 372-9790

If you are an organizer or director, please advise us to be listed.

CALENDAR

APRIL
4 to (Campbell) Kolty's
May 2 Tournament # 3
Info: Mayntz
13-14 (San Francisco) Class
Info: Goodall
13 (Marysville)
Info: Taylor
20-21 (Rohnert Park)
Info: Randle
27 (Richmond)
Info: Ball or Orwig

MAY
4-5 (Davis)
Info: Manning
18-19 (Marysville)
Info: Taylor
25-27 (Sunnyvale) LERA
Info: Hurt

JUNE
8-9 (Sacramento)
Info: Young
15-16 (Marysville)
Info: Taylor
22 (Richmond)
Info: Ball or Orwig

JULY
4-7 (San Jose)
Info: Sierra
13-14 (Marysville)
Info: Taylor
18-21 U.S. Junior Open
Info: Lazarus

CALCHESS

c/o Hans Poschmann
 4621 Seneca Park Ave.
 Fremont, Calif. 94538

Bulk Rate
U.S. Postage
PAID
Fremont, Cal
Permit # 406

Chris L. Mavraedis
 35628 McCarthy Common
 Fremont CA 94536
 T
 EXTENDED EXP DATE APRIL - 1985

BELLARMINE CHESS CLUB
 Friday during school
 See: J. Rauen
 (408) 268-2943

BERKELEY CHESS CLUB
 Friday 7:30 pm
 See: A. Glasscoe
 (415) 652-5324

BULLETIN CHESS CLUB
 Tuesday 8:00 pm.
 See: M. Burkett
 (415) 658-9826

CARSON CITY CHESS CLUB
 Thursday 7:00 pm
 See: D. Stevens
 (702) 883-6597

CHICO HIGH CHESS CLUB
 Daily during school.
 See: D. Rowe
 (916) 343-2696

DE ANZA COLLEGE CHESS
 Thursday 11:00 am
 See: B. Bevins
 (408) 996-4692

FREMONT/TRI-CITY CHESS
 Friday 7:00 pm
 See: H. Poschmann
 (415) 656-8505

HAYWARD CHESS CLUB
 Monday 5:00 pm
 See: M. Sweeney
 (415) 357-8503

INDEPENDENCE CHESS CLUB
 Daily during school.
 See: R. Vierhus
 (408) 267-2284

KOLTY CHESS CLUB
 Wednesdays 7:30 pm.
 See: P. Mayntz
 (408) 371-2290

LERA CHESS CLUB
 Monday 6:00 pm
 See: K. Stone
 (409) 742-3126

MECHANICS INSTITUTE
 Daily from 9:00 am.
 57 Post St. S.F.
 See: Max Wilkerson

OCCIDENTAL CHESS CLUB
 Monday 8:00 pm
 Yellow Lizard Deli

RICHMOND CHESS CLUB
 Saturday noon.
 See: T. Ball
 (415) 234-5336

ROHNERT PARK CHESS
 Monday 7:00 pm
 See: W. Randle
 (415) 795-2220

SACRAMENTO CHESS CLUB
 Wednesday 6:30 pm
 See: D. Young
 (916) 361-7092

SAN JOSE CITY COLLEGE
 Monday 3:30 pm
 See: F. Sierra
 (408) 241-1447

SAN JOSE UNIVERSITY
 Friday 3:00 pm
 See: F. Sierra
 (408) 241-1447

SANTA CLARA CHESS CLUB
 2nd Saturday
 See: F. Sierra
 (408) 241-1447

SONOMA STATE CHESS
 Thursday 7:00 pm
 See: C. Falbo
 (707) 584-8324

U.C. BERKELEY CAMPUS
 Wednesday 7:00 pm
 See: A. Lazarus
 (415) 642-7511

VALLEJO CHESS CLUB
 Friday 7:30 pm
 See: G. Rasmussen
 (707) 642-7270

YUBA-SUTTER CHESS
 Sunday noon
 See: L. Taylor
 (916) 741-3979

LIVERMORE CHESS CLUB
 Thursday 7:00 pm
 See: C. Pigg
 (415) 447-5067

See? We have lots of
 space left to list
 your club too. Write
 the editor of CHESS
 VOICE to have your
 club listed, or to
 make any changes.