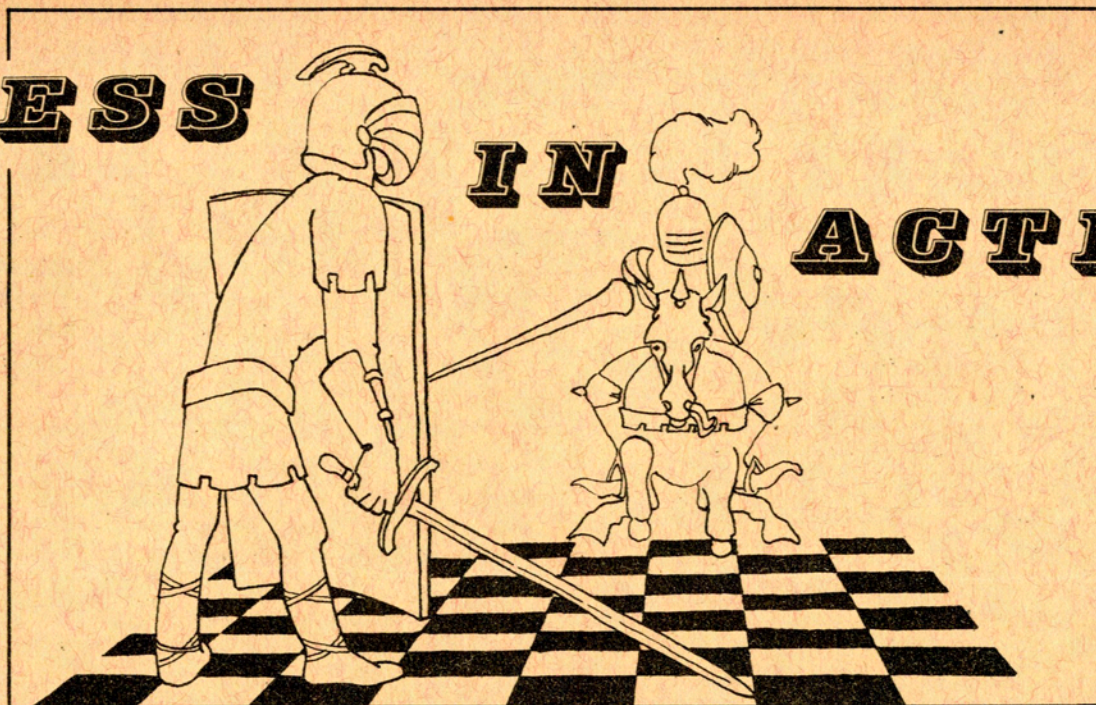


CHESS

IN

ACTION



NOVEMBER - DECEMBER, 1958

PUBLISHED BY CHESS FRIENDS OF NORTHERN CALIFORNIA, A CHARTER MEMBER OF THE UNITED STATES CHESS FEDERATION. EDITED BY JOHN E. ALMOND, 14 BATES BLVD., ORINDA, CALIF.

A VERY VERY MERRY CHRISTMAS TO ALL

AND HERE IS AN IDEA FOR CHESSPLAYERS TO MAKE THE FESTIVE SEASON EVEN MORE FESTIVE THAN EVER: ORGANIZE A CHAMPAGNE CHESS COMPETITION AMONG YOUR CHESSFRIENDS!

BASICALLY, THE IDEA IS THAT YOU GET YOUR CHESSFRIENDS TOGETHER AND EACH ONE BRINGS ALONG A BOTTLE OF CHAMPAGNE (CALIFORNIAN CHAMPAGNE IS VERY REASONABLE) AND YOU PLAN THE TOURNAMENT BETWEEN YOURSELVES. IT CAN BE A ROUND-ROBIN OR A KNOCK-OUT OR A SWISS BUT THE IDEA IS THIS: FOR EVERY PAWN TAKEN, YOU HAVE TO DRINK A GLASS OF BUBBLY, 3 GLASSES FOR A KNIGHT OR BISHOP; 5 GLASSES FOR A ROOK AND 8 GLASSES FOR A QUEEN. SO, YOU SEE THAT IT MIGHT PAY TO SACRIFICE A QUEEN EARLY ON AND WIN BY YOUR OPPONENT'S DEFAULT. ANYONE WHO PASSES OUT IS DISQUALIFIED.

BE CAREFUL THAT YOU DO NOT RUN OUT OF CHAMPAGNE TOO EARLY ON. SO RATION THE DRINKS A LITTLE DURING THE EARLY ROUNDS IF THIS IS TO BE A ROUND ROBIN OR A SWISS - OR INCREASE THE ENTRANCE FEE TO TWO BOTTLES. IT IS IMPORTANT TO SEE THAT THERE IS GREAT EXCITEMENT AND INTEREST DURING THE FINAL ROUNDS OF THE COMPETITION.

STRANGLY ENOUGH, SOME PEOPLE SEEM TO PLAY BETTER WHEN THEIR INHIBITIONS HAVE BEEN LOWERED. HOWEVER, MOST WOODPUSHERS DETERIORATE FAST UNDER THE AFFLUENCE OF INCOHOL.

SO, AGAIN WE SAY "A MERRY CHRISTMAS TO ALL CHESSPLAYERS AND WOODPUSHING ELBOW-LIFTERS."



MORE ON THE HIPPOPOTAMUS OPENING



THE NAME "HIPPOPOTAMUS" WAS GIVEN TO THE OPENING BY O'KELLY, THE BELGIAN CHAMPION. HE CONSIDERED THE GAME HAD ITS PIECES IN QUEER PLACES LIKE THE HIPPO! ALSO, IT IS PROTECTED BY A THICK SKIN THAT IS DIFFICULT TO PENETRATE. TARTAKOVER PLAYED A SIMILAR OPENING AFTER A VISIT TO THE HIPPOPOTAMI AT THE NEW YORK ZOO! THIS, AND THE FOLLOWING, IS SOME NEW INFORMATION RECEIVED FROM MR. J.C. THOMPSON, THE ORIGINATOR OF THE HIPPO OPENING.

CONSIDER THE EIGHT 2-SQUARE MOVES OF PAWNS:

- 3 MOVE TO SQUARES WITH A SINGLE GUARD
- 5 MOVE TO SQUARES WITH NO GUARD.

CONSIDER THE EIGHT 1-SQUARE MOVES OF PAWNS:

- 4 MOVE TO SQUARES WITH 4 GUARDS
- 3 MOVE TO SQUARES WITH 3 GUARDS
- 1 MOVES TO A SQUARE WITH 2 GUARDS.

BOTH THE PAWNS ON 3RD AND 4TH RANK ATTACK THE SAME NUMBER OF SQUARES. THE ATTACK ON THE SQUARES ON 5TH RANK IS NO MORE VALUABLE THAN THE ATTACK ON THE 4TH RANK.

WHEN A PAWN HAS MOVED TO 4TH RANK IT CANNOT MOVE BACK TO ATTACK SQUARES ON THE 4TH RANK. THE PAWN ON THE 3RD RANK MAY MOVE FORWARD TO ATTACK SQUARES ON THE FIFTH RANK.

EVERY TIME A PAWN MOVES, IT GETS WEAKER EXCEPT WHEN IT DEVELOPS A PROMOTION VALUE. PAWNS LOSE STRENGTH BY MOVING BUT THEIR MOVEMENT IS NECESSARY FOR THE DEVELOPMENT OF THE PIECES.

THE DEVELOPMENT OF PIECES IN THE EARLY GAME IS OFTEN TAKEN AS THE SAME THING AS THE MOVEMENT OF PIECES. BUT PIECES MAY BE DEVELOPED WITHOUT THEIR MOVEMENT. AFTER P-KT3 AND P-R4, THE B, KT, AND R HAVE CONSIDERABLE DEVELOPMENT WITHOUT MOVING.

THE POWER OF A PIECE DOES NOT OFTEN REST IN THE MAKING OF A THREAT BUT IN ITS ABILITY TO DEVELOP SEVERAL THREATS.

CASTLING BECOMES NECESSARY WHEN THE PAWNS IN FRONT OF THE K ARE ADVANCED 2.

IT IS GENERALLY BETTER TO ATTACK A GREAT MANY SQUARES THAN TO CONCENTRATE ON A FEW; IT IS THIS THAT MAKES TWO BISHOPS STRONG AND WHEN THERE IS ONLY ONE BISHOP, PUT THE QUEEN ON A COLOR DIFFERENT FROM BISHOP.

PAWNS SIDE BY SIDE ARE STRONGER THAN WHEN PLACED DIAGONALLY.

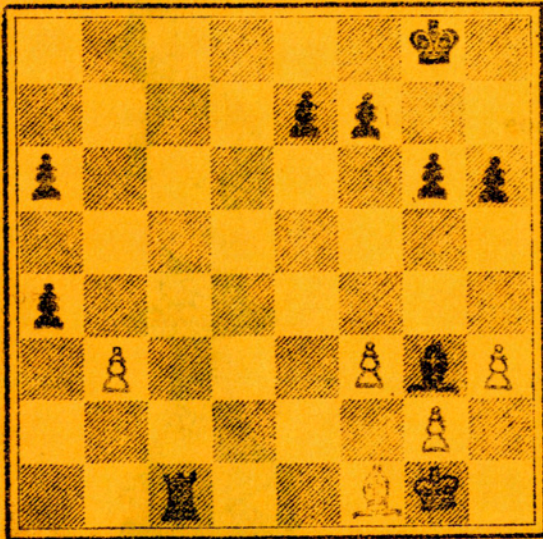
THE SQUARE KB2 IS THE WEAKEST SQUARE ON THE BOARD. ITS DEFENCE GENERALLY CONSISTS IN SCREENING IT FROM ATTACK AND NOT ALLOWING OPPOSITION PIECES TO OCCUPY SQUARES FROM WHICH THEY CAN ATTACK IT. IT CAN BE PROTECTED BY A BISHOP ON K3, A KT ON R3 OR A Q OR R ON 2ND RANK OR K SIDE CASTLING.

THIS SQUARE KB2 HAS ANOTHER IMPORTANT CHARACTERISTIC (THE CAUSE OF ITS WEAKNESS) THERE IS NO PIECE (THE KING EXCEPTED) READY TO MOVE INTO IT, WHEN ITS PAWN IS MOVED. THE K2 AND Q2 SQUARES HAVE A B, Q OR KT. READY TO MOVE IN AND WHEN ANY ONE IS MOVED IN THE OTHER TWO ARE SHUT OUT. THIS MAKES KB2 A GOOD SQUARE TO OCCUPY IF IT CAN BE DONE WITHOUT TOO MANY MOVES. FIANCHETTOED BISHOPS ALSO OCCUPY SQUARES NOT WANTED BY OTHER PIECES. MOVING INTO KT2 BY B - SEE JARNO-THOMPSON GAME AT END OF ARTICLE.

IT IS QUITE SIMPLE TO BRING THE KKT TO KB2 AND THIS CONSTITUTES THE HIPPO OPENING. THE KT MAY REMAIN ON R3 FOR A CONSIDERABLE TIME, THREATENING KT-B4 AND KT-Kt5. THE KB CAN BE DEVELOPED ON KKT2 AND FOLLOWED BY CASTLING. THE K IS THEN IN SAFE QUARTERS BUT A KING SIDE ATTACK IS NOT NOW LIKELY TO SUCCEED. SPASSKY (BLACK) DID IT AGAINST FURMAN (SEE BOOKLET). A KING SIDE ATTACK IS MORE LIKELY TO SUCCEED IF B IS MOVED TO K2 AND THE QKT TO Q2 - KBI.

CHESS CHIT CHAT

SUDDENLY DISCOVERED THAT A HORRIBLE HAND HAS TAKEN UP THE SPACE AT THE FOOT OF "PATZERS' PAGE" INSTEAD OF THE DIAGRAM OF THE ENDING OF THE PIRC DEFENCE GAME DESCRIBED THEREON. SO HERE IS THE ENT:



SAN BRUNO CHESS CLUB NEWS

MRS NANCY McLEOD OF MILLBRAE, PLAYING WITHOUT THE LOSS OF A GAME, WON THE SAN BRUNO OPEN CHESS CHAMPIONSHIP. DAN B. McLEOD PLACED SECOND, LOSING TO LOUIS TOMORI OF SAN BRUNO ONLY. NOEL BAGGETT, A SENIOR AT CAPUCHINO HIGH (AND ONE OF CHESS FRIENDS FASTEST RISING PLAYERS) WAS THIRD. LOUIS TOMORI WAS FOURTH.

WINNING THE "B" CLASS TOURNAMENT WAS SAUL UDMAN OF SOUTH SAN FRANCISCO. JOHN DILLON PLACED SECOND, THIRD WAS JIM TAYLOR AND FOURTH, VICTOR SALATKO OF S.F.

BILL MINGUS, A CAPUCHINO STUDENT, WINNING 6 1/2 GAMES OUT OF 7, TOOK FIRST PLACE IN THE "C" CLASS. STAN MAGULAE OF SAN BRUNO PLACED SECOND WITH THE SCORE OF 5 1/2 - 1 1/2.

THE SAN BRUNO OPEN CHESS TOURNAMENT WHICH WAS HELD FOR THE FOURTH TIME THIS YEAR TURNED OUT TO BE A GREAT SUCCESS. IT IS SPONSORED BY THE SAN BRUNO RECREATION DEPARTMENT AND THE SAN BRUNO CHESS CLUB.

ANY NEWS FOR GEORGE K.?

ANY NEWS SENT TO GEORGE KOLTANOWSKI, FOR PUBLICATION ON THE SUNDAY, SHOULD BE IN HIS HANDS WEDNESDAY PRIOR. IT CAN ONLY BE PROMISED THAT IT WILL APPEAR IN THE FIRST EDITION OF THE "CHRONICLE" AS MATERIAL IS OFTEN CUT SEVERELY FOR SECOND.

THE EAST-WEST MATCH

THE EAST-WEST MATCH WAS HELD IN HAYWARD ON OCTOBER 26TH AND RESULTED IN THE SCORE EAST 10 - WEST 19. WHAT A GRAND TIME WAS HAD BY ALL! THE HAYWARD CHESS CLUB SUPPLIED DOUGHNUTS AND COFFEE AND HIRED A LADY TO SERVE EVERYONE! ERNIE BARTHOLOMEW AND HIS CHARMING WIFE PUT FORTH A GREAT DEAL OF EFFORT THAT WAS APPRECIATED BY EVERYONE WHO ATTENDED. MRS. MCGINLEY MADE RIBBONS FOR THE PLAYERS - RED FOR THE EASTBAY - GREEN FOR THE WESTBAY. THE PRIZES WERE WELL SELECTED AND WELL-RECEIVED BY THE WINNERS.

SCORING

WEST	EAST
ARDEN HILL.....1	M. FELDSTEIN.....0
D. MAHOOD.....0	E. KENNEDY.....1
W. RAWLEY.....1	K. FERGUSON.....0
G. LYDEARD.....1	FRED OBERG.....0
R. CANTY.....0	L. O'DOAN.....1
F. LYNCH.....1	T. ROSS.....0
D. BOGDANOFF....1	R. THACKER.....0
M. EWELL.....1/2	A. OJEDA.....1/2
J. WATSON.....0	R. KARCH.....1
DAN McLEOD.....1	W. CASTELLANO....0
R. BUTTON.....1	L. SARAFIAN.....0
M. ELLINGTON....0	J. MORITZ.....1
D. HOFFMAN.....1	ROBERT LUND.....0
H. GREISS.....1	F. LESTER.....0
D. WATTS.....0	M. O'NEILL.....1
C. SPITZ.....1/2	B. FOREMAN.....1/2
N. BAGGETT.....1/2	G. PETERSON.....1/2
W. MONTFORT....1/2	D. DALESSI.....1/2
A. KNACK.....1	MRS. M. BARTHMEW.0
E. ANDERS.....1/2	E. BARTHOLOMEW...1/2
P. ROHWER.....1	ROBERT OBERG.....0
E. WATSON.....1	J. PETERSON.....0
J. McILVAIN....1/2	L. E. PERRY.....1/2
W. CRABTREE....1	A. SKERMETTA....0
J. GREENE0	L. JOHNSON.....1
P. FUSSELMAN...1	E. HYMANS.....0
E. HAWKSWORTH...1	M. SINGLETON....0
W. STEVENS.....1/2	C. MCGINLEY.....1/2
J. DORR GRIGGS..1/2	AB SENTEE.....1/2
<u>19</u>	<u>10</u>

PRIZEWINNERS WERE GARY PETERSON OF HAYWARD, AL SKERMETTA OF SAN LORENZO, MIKE SINGLETON OF SAN LORENZO, J. McILVAIN OF SANTA CRUZ, ARDEN HILL OF LOS ALTOS, PERRY FUSSELMAN OF HAYWARD, AND JERRY PETERSON OF SAN LORENZO. CONGRATULATIONS!

THANKS ALSO GO TO:
W. CASTELLANO, PRESIDENT OF HAYWARD C.C.
BILL STEVENS, CHUCK MCGINLEY, J. DORR GRIGGS, AND UNCLE TOM COBLEY AND ALL.

CHESS CHIT CHAT

WE ARE HAVING A FEW DIFFICULTIES WITH OUR DIAGRAMS THESE DAYS BUT ARE EXPERIMENTING TO IMPROVE THEM.

HOWEVER, IN CASE THE PROBLEM PAGE DIAGRAMS ARE NOT TOO CLEAR, HERE ARE THE FORSYTH NOTATIONS. IT ONLY TAKES A FEW MINUTES TO GO OVER THE BLACK PIECES WITH A BLACK PEN OR PENCIL.

no. 5: Mate in 2 moves. white: 3, Black: 4.
8/8/zq5/3Plb2/2P5/kP6/8/K7

No. 6: White takes back its last move, and mates in one move. white: 3, Black: 4.
lr1N3q/k3PK2/6Q1/8/8/8/8/8

No. 7: Mate in 2 moves. white: 6, Black: 2.
8/3k4/8/4kP2/lplrp2b/8/lq6/8

No. 8: Mate in 7 moves. white: 3, Black: 7.
8/1P7/1P7/1P7/1P7/1PK6/1P2b3/lklr4

NEW CLUB AT PASO ROBLES ?

GEORGE RECENTLY GAVE A GAME AT PASO ROBLES AND MADE MANY NEW FRIENDS FOR CFNC. A NEW CLUB IS IN THE OFFING. WELCOME PASO ROBBLANS!

CHESS HITS HERB CAEN COLUMN

QUOTING HERB CAEN "RICH TILLES, A 16-YR-OLD MEMBER OF THE CHESS FRIENDS CLUB, GOES OVER TO S¹QUENTIN TO PLAY CHESS WITH A PRISONER - AND HESITATES A LONG TIME OVER A MOVE. "COME ON, COME ON!" THE PRISONER FINALLY BARKS. "YOU THINK I'VE GOT ALL DAY???"

WHAT IS THIS ??????????

RESULT OF SUMMER TOURNAMENT OF CARROLL OGDEN CHESS CLUB, SAN FRANCISCO

"A" GROUP 1st ROY HOPPE
2nd FRANK LYNCH
"B" GROUP 1st CARL SPITZ
2nd CHARLES BUTLER
"C" GROUP 1st IRVING WARNER
2nd MIKE HARRIS

THE WINTER TOURNAMENT IS NOW IN PROGRESS. MEETINGS ARE ON THURSDAY EVENINGS AT 7.15 AT THE JUNIOR HIGH SCHOOL, BAY AND FILLMORE, SAN FRANCISCO, IN THE CAFETERIA.

WELCOME TO HEWLETT-PACKARD COMPANY

JUST RECEIVED NEWS THAT THE HEWLETT-PACKARD COMPANY IN PALO ALTO HAS JOINED CHESS FRIENDS IN GREAT NUMBERS AND ARE EXTREMELY ENTHUSIASTIC. GEORGE PLANS TO GIVE AN EXHIBITION AT THEIR GROUP WHEN HE GETS BACK FROM HIS TRAVELS. WELCOME TO CFNC.

WHERE'S GEORGE ???

OMAHA, EL PASO, ST. LOUIS. MOVING SO FAST, CANNOT KEEP PAGE.

CHESS IN MARIN, U.S.A.

JUST RECEIVED A COPY OF "THIS WEEK IN MARVELLOUS MARIN" FROM OUR FAVORITE PRINTER, LOTHAR SALIN OF THE KERES CHESS CLUB THAT MEETS AT THE GAMBIT RESTAURANT (EVENINGS) AND THE MAÑANA (LUNCHTIMES). THE COVER HAS A FINE PHOTO OF BEARDED JACK WAHL PLAYING CHESS AND THERE IS A FEATURE ARTICLE INSIDE WITH SOME EXCELLENT PHOTOGRAPHS OF VARIOUS CHESS NOTABLES, INCLUDING ONE OF LOUIS CAILLAT, SAN RAFAEL SCULPTOR, PUTTING THE FINISHING TOUCHES ON A 3 FT. CHESS SET CARVED OUT OF REDWOOD - THAT IS, THE MEN ARE 3 FT HIGH!

WHAT IS THIS ?????????

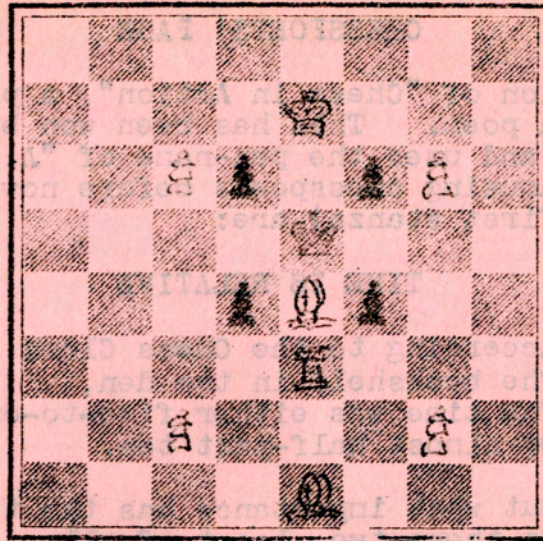
THREE CURIOUS PICTURES APPEAR IN THIS ISSUE ENTITLED "WHAT IS THIS???" OR WORDS TO THAT EFFECT. WE INTEND PRINTING ANOTHER 9 DURING THE NEXT FEW EDITIONS. (3 PER EDN.) PRIZES TO THE FIRST THREE WINNERS SENDING IN THE BEST SET OF ANSWERS AS TO WHAT THESE THINGS ARE.

XYLOTHISM (FROM THE GREEK "XYLON", WOOD, AND "OTHISMOS", PUSHING) WOOD-PLAYING, OR PLAYING CHESS.



CHess PROBLEM
AND
CROSSWORD

MATE IN TWO -
THEN, USING THE
ALGEBRAIC NOTATION,
FILL IN THE CROSS-
WORD PUZZLE.



ACROSS

- A8 - H8 THIS MAN ANALYZED THE OPENING THAT HAS SINCE BORN HIS NAME, IN THE DEUTSCHE SCHACHZEITUNG IN 1854.
 A7 - D7 A PREPOSITION F7 - H7 SACREL VASE OR COIN BOX.
 A6 - B6 ABOUT E6 YOU LOST? H6 A HUNDRED
 A5 - D5 SCANDINAVIAN TOAST F5 - H5 WITH E6, ANAGRAM OF 60 MINS.
 A4 - C4 3/4 OF A WELL-KNOWN REPETITIOUS ORGANIZATION.
 G4 - H4 WITH B5, A STOUT WOOD.
 A3 - D3 THESE YOU NEED, IF YOU WANT TO GET ANYWHERE.
 F3 - H3 A FRENCH KING, SPANISH KNIGHT, ENGLISH KNIGHT.
 A2 - B2 INITIALS OF WELL-KNOWN CHESSPLAYER.
 D2 - F1 MOHAMMEDAN NAME H2 TWO OF THESE MAKE A HORSE.
 A1 - D1 ALL GOOD CHESSMEN HAVE SOME OF THIS IN THEM.
 F1 - H1 YOUR OPPONENT IS A FRIENDLY ONE.

DOWN

- A8 - A1 1. P-Q4, P-Q4; 2. P-QB4, P-QB3; 3. N-QB3, P-K3; 4. P-K4, P-KP.
 B8 - B1 THIS MAN LAUNCHED A FAMOUS DEFENCE IN 1921 DESIGNED TO PROVOKE THE PREMATURE ADVANCE OF WHITE'S CENTER PAWNS.
 C8 - C7 DRINKING TO THIS DID NOT HELP ALEKHINE'S GAME.
 C5 - C3 UNIT OF ELECTRICAL RESISTANCE.
 C1 SPANISH BISHOP
 C8 - D7 ... AND BEHOLD!
 D3 - D1 THE POSITION I AM USUALLY IN AFTER THE FOURTH MOVE.
 E8 ANOTHER SPANISH BISHOP! E6 I GET A LOT OF THESE IN TOURNAMENTS.
 E2 SAME LETTER AS D8
 F8 - F7 AN ENGLISH KNIGHT AND A FRENCH PAWN. F5 ROOK.
 F3 - F1 A MORROCCAN NATIVE ?
 G8 - G7 AMERICAN SOLDIER G8 - G1 QUIET IN ITALIAN AND THE FIRST HALF OF A WELL-KNOWN CHESS OPENING.
 H8 - H1 IF YOU LOSE THIS YOU PROBABLY LOSE THE GAME TOO.

*** **

IN CASE THE PROBLEM CHARACTERS DO NOT
COME OUT TOO WELL, HERE IS THE NOTATION:

g/4k3/2p1p1/4k3/3p2/1r3/2p3p1/1b3
 *** **

"CHESS IS A SEA IN WHICH A GNAT MAY
DRINK AND AN ELEPHANT MAY BATHE."
- OLD INDIAN PROVERB

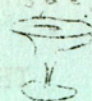
**** *****

!!!!!!!IMPORTANT!!!!!!!

DON'T MISS THE HOLIDAY SPECIAL OPEN
CHESS FESTIVAL AT THE SHERATON-PALACE,
SAN FRANCISCO, ON DECEMBER 13 AND 14.
EXTRA ATTRACTIONS
SUNDAY BRUNCH GATHERING 12 - 2. !
TWO LITTLE TROPHIES WITH HIPPOPOTAMI
SITTING ON THEM!



A BRAINTWISTER *



Last month, the Bagneres-d'Ariege Chess Club, composed of CAHUSAC, LEGAMBE, and REYNAUD, received the team of Tarascon-sur-Bigorre, whose players, by an amazing coincidence, had identical names.

The secretary of the Chess League only received the scantiest information of the match that took place and was put to the task of proving his intelligence by reconstituting the encounter.

1. He knew, naturally, that the club playing host, played White on the First Board.
2. One of the two LEGAMBEs opened with a Max Lange.
3. Two of the players had the same name because they were related to each other. They both won their games.
4. CAHUSAC of Bagneres-d'Ariege played the Kotov attack, in the Viennese Variation of the Queen's Gambit. (Col 89 MCO 9th Edn.??)
5. On 3rd Board, White did not castle until the 32nd move. He won in spite of this.
6. The game on Board 2 was drawn.

With these few facts, the League Secretary was able to reconstruct who played who and the result of each game.

Can you ? Also, in what town was the match held ?

*** **

"A GRAND MASTER'S DEGREE" (cont'd)

You first need our Grand Master's
 bargain
 The board with its inlay of gold
 Of course, you will need some new
 chessmen -
 You can't play with anything old.

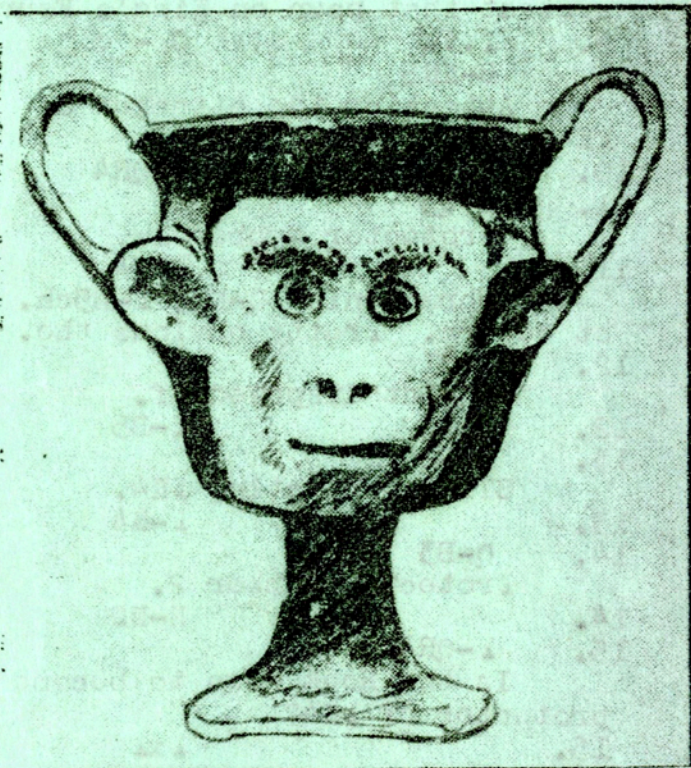
Each lesson came bound in stout
 vellum
 Every question and answer was tough
 A year and a day I deep studied,
 For the road of a Master is rough.

Now I've come to the very last
 question.
 Why I seek your advice you can see.
 "Which side of the board would you
 castle
 When told you'll be mated in three?"

A. C. Player

* TRANSLATED FROM "CASSE-TÊTE" PAR M. GELLY
 IN "L'ÉCHIQUIER DE FRANCE", AOUT-SEPTEMBRE,
 1958. *****

THE CHESS PROBLEM - CROSSWORD PUZZLE,
 APPEARING ON ANOTHER PAGE IN THIS ISSUE,
 HAS ALSO BEEN LIFTED FROM THE SAME MAGAZINE.



WHAT IS THIS ??? SEE CHESS CHIT CHAT.

THE IMPORTANCE OF BEING GEORGE

On October 28, 1958, George Koltanowski played a Simultaneous Exhibition in Omaha, Nebraska.

One of his opponents was the Nebraska Champion of 1957. The following game, one of many, was won with no little brilliancy by George.

MAX LANGE

	White Koltanowski	Black Haley
1.	F-K4	F-K4
2.	N-KB3	N-QB3
3.	B-B4	B-B4
4.	O - O	N-B3
5.	F-Q4	BxP
	George is now a pawn down- apparently on purpose though. (The Art of Onepawndownmanship?)	
6.	NxB	NxN
7.	p-B4	F-Q3
8.	F-B3	N-B3
9.	F-B5	
	Now just watch George over- protect that pawn on King's Four.	
9.	O - O
10.	B-KN5	
	Attacking the attacker of 1K4.	
10.		N-QR4
11.	B-Q3	
	Protector Number 1.	
11.		F-B4
	Threatening Q-N3, F-B5ch. et cetera. Pretty obvious tho.	
12.	K-R1	
	Threat disposed of.	
12.		F-B5
13.	B-B2	
	Still protecting 1K4.	
13.		F-N4
14.	Q-B3	
	Protector Number 2.	
14.		N-N2
15.	F-QR4	
	Is the Rook also to become a protector of 1K4?	
15.		FxI
16.	N-Q2	
	Protector Number 3 - the overprotector.	
16.		N-QR4

17.	RxI	B-Q2
18.	BxN !	FxB
19.	RxN !!	QxR
20.	NxI	Q-B4 ?

At this point, George is
down a rook for a knight. As
every move is part of a big plan,
however, there is absolutely
nothing to worry about except that,
it is just possible, that "even
the best laid schemes of mice and
men aft gang agly" (Robert Burns).

21.	N-K3	Q-B2 ?
22.	N-Q5	Q-Q1
23.	Q-N4ch.	K-R1
24.	Q-R4	R-KN1
25.	NxI	R-N2
26.	R-B3	Q-R4
27.	F-R3 !	Q-R8ch.
28.	K-R2	QxI ?

Fiddling while Rome burns.
Seems that Queenie should have
hastened to Kingie's aid.

29.	R-N3 !	QR-KN1
	Too late, old chap!	
30.	QxIch.!!!	RxQ
31.	RxR mate.	

A beautiful game and one
worth considerable study. It is
a magnificent example of over-
protection, the theory of which
was first expounded in Nimzowitch's
"My System". Basically, to over-
protect an important square, or
rather a pawn on an important square,
is to build yourself a win for not
only do the protecting pieces give
strength to the protected square
but they all draw strength from it.

It seems that it is just another
very good example of the old old
proverb: "United we stand, divided
we fall."

*** **

THE GREEK EMPIRE HAD A NAME FOR CHESS
- ZATRIKION. WILLARD FISKE OCCASIONALLY
USED THE WORD "ZATRIKIOLOGY" FOR THE ART
OR GAME OF CHESS.

CHESS IS A DROMENON - F.V. MORLEY
(A DROMENON, SAYS MORLEY, IS A PATTERN OF
DYNAMIC EXPRESSION IN WHICH THE PERFORMERS
EXPRESS SOMETHING LARGER THAN THEMSELVES.)

ANOTHER INTERESTING COMPETITION

IN 1939, THE ENGLISH NEWSPAPER "THE OBSERVER" RAN A COMPETITION ASKING ITS READERS TO SUBMIT ANSWERS TO THE QUESTION "WHY CHESS DOES NOT APPEAL TO THE ENGLISH MIND". THE WINNING ANSWER WAS SOMEWHAT LENGTHY AND, IN OUR HUMBLE OPINION, NOTHING LIKE AS CLEVER NOR AS INTERESTING AS SOME OF THE UNSUCCESSFUL ENTRIES, AMONGST WHICH, WERE:-

BRITONS NEVER, NEVER, NEVER SHALL BE SLAVS. (T.L.B.)

THE ENGLISHMAN LIKES TO BE SAD ABOUT PLEASURES WITH RATHER MORE FUN IN THEM. (H.N.W.)

CHESS PIECES ARE NOT SPHERICAL. (L.A.)

BECAUSE "MUDDLING THROUGH" IS EXCLUDED. (Mrs. J.H.B.)

BRITONS ONLY ENJOY FIGHTS IN WHICH THE ODDS ARE HEAVILY AGAINST THEM. IN CHESS, BOTH SIDES START OUT EQUAL IN STRENGTH.

WELL, THERE YOU HAVE THE IDEA. NOW THE COMPETITION HERE HAS TWO SECTIONS:-

SECTION (1) ANSWER THE QUESTION:

WHY CHESS DOES NOT APPEAL TO THE AMERICAN MIND

SECTION (2) ANSWER THE QUESTION:

WHY CHESS DOES / DOES NOT APPEAL TO THE RUSSIAN / ITALIAN / SPANISH / CHINESE MIND. (ETC. ANY NATIONALITY YOU LIKE).

PRIZES TOO !!!

*** **

SOME INTERESTING CHESS QUOTES

WE HAVE DISCOVERED THAT IT WAS IN HENRY JAMES BYRON'S PLAY "OUR BOYS", 1880, THAT THE QUOTATION "LIFE'S TOO SHORT FOR CHESS" WAS FIRST USED. NORMAN KNIGHT, AUTHOR OF "CHESS PIECES" HAS SUGGESTED THAT THE REPLY TO THIS SHOULD HAVE BEEN: "THAT IS THE FAULT OF LIFE, NOT CHESS."

"IN CHESS, AS PLAYED BY A GOOD PLAYER, LOGIC AND IMAGINATION MUST GO HAND IN HAND, COMPENSATING EACH OTHER." - JOSE RAOUL CAPABLANCA.

"THE PIN IS MIGHTIER THAN THE SWORD." - FRED REINFELD

THE PLAYERS

LIFE IS A GAME UPON A CHEQUERED FIELD, AND WE THE PIECES, MOVED WE KNOW NOT WHY BY GOOD AND EVIL, TWO STRONG MINDS WHO WIELD CONTENDING SIDES, TO STRIVE FOR MASTERY. V.S.W.

HERE IS ONE WE JUST CANNOT UNDERSTAND:

"CHESS AND WINE ARE BORN BROTHERS." - OLD RUSSIAN PROVERB

TATZERS' PAGE

Even the worst game has its use, even if it is only to serve as a horrible example to others.



Fire Defence

White Black

- | | |
|----------|-------|
| 1. I-K4 | I-Q3 |
| 2. I-Q4 | N-KB3 |

No mistakes so far due to the fact that the players had just taken a lesson on the Fire Defence and these were the set first two moves!

- | | |
|----------|--|
| 3. B-Q3 | |
|----------|--|
- Better is N-QB3 according to the books.

- | | |
|-----------|-------|
| 3. | I-KN3 |
| 4. B-KN5 | N-Q2 |

Black starts getting himself tied in knots.

- | | |
|-----------|---------|
| 5. N-KB3 | I-N2 ?? |
| 6. I-K5 | IxI |

- | | |
|----------|------|
| 7. IxI | N-N5 |
| 8. B-N5 | |

Black is in a mess now.

- | | |
|----------|----------|
| 8. | B-KN2 |
| 9. Q-Q4 | I-QR3 ?? |

- | | |
|------------|--|
| 10. QB-B6 | |
|------------|--|

Black ought to give the game up if he cannot play better than this. White has him tied in knots.

- | | |
|-----------|----------|
| 10. | N(N5)xKI |
|-----------|----------|

AH! Instead of resigning, Black gambles that the greedy look in White's eyes will make him seize the Rook. So he sets a trap. What else could he do?

- | | |
|---------------|--|
| 11. BxR ???? | |
|---------------|--|

White falls for the trap, hook, line, and sinker. This is a good lesson in that a game is never lost until you are mated. Black might have resigned after White's tenth move, yet now Black is ahead.

- | | |
|------------|-----------|
| 11. | NxN check |
| 12. BxN | BxQ |
| 13. I-QB3 | B-N2 |
| 14. O-O | O-O |
| 15. R-K1 | N-K4 |
| 16. B-K4 | I-KR3 |
| 17. B-B4 | N-B5 |

18. I-QN3 N-R6

Now here is where Black shows some rather amazing thinking ahead. He has a Queen and a pawn in exchange for a Rook so he can afford to lose a few points worth of material if he can clear the board of pieces. Watch how this works.

- | | |
|-----------|-----|
| 19. NxN | BxI |
| 20. R-Q1 | BxR |
| 21. RxQ | RxR |
| 22. BxB | |

Black has now simplified everything and remains one pawn and a rook for a knight ahead. Furthermore, he has a dangerous attack up his sleeve.

- | | |
|---------------|-----------|
| 22. | R-Q8 |
| 23. B-B3 | R-B8 |
| 24. I-KR3 | B-N5Check |
| 25. K-R2 | RxB |
| 26. N-B4 | B-QB4 |
| 27. K-N1 | B-K3 |
| 28. B-K2 | BxN |
| 29. BxB | I-QN4 |
| 30. B-K2 | B-Q3 |
| 31. I-B3 ??? | B-N6 !!! |
| 32. I-QR4 | R-B8Check |
| 33. B-B1 | IxI |

And White resigns. He has complete rigor mortis and yet, as he can move his BI and RI there is little chance of stalemate.



WOT
IS
THIS?

New Ratings and Unrated Members
of
CHESS FRIENDS OF NORTHERN CALIFORNIA

Ratings continued

CLASSIFICATIONS! E-----Expert.....2000 and up
A-----Advanced.....1800 to 1998
B-----Intermediate.....1600 to 1798
C-----Average.....1598 and under

Legend: Alameda (A), Berkeley (B), Concord (C), Hayward (H),
Lafayette (L), Oakland (O), Pleasant Hill (PH), San
Francisco (SF), South San Francisco (SSF) Others (as
indicated)

- | | |
|---------------------------------------|--|
| Abrams, Dr. A. L. (SF) | Doppelmayr, Wm. (San Br.) |
| Anger, David S. (SF) | Drew, Elizabeth (O) |
| Arinsky, John M (San Mateo) | Eissler, Dr. R. (SF) |
| Bacher, F.A. (Salinas) | Ellington, Miles (SF).....Cl460 |
| Baer, R.M. (B).....Bl700 | Faull, John (Burl) |
| Balentine, T.R. (Carmel).....Cl500 | Fischer, John (San Pablo) |
| Barber, Francis (SSF).....Cl500 | Folden, N.C. (SF) |
| Barnett, E.F. (Stanford) | Freeman, Russ (O).....Al858 |
| Barrett, Ken. (LaHonda) | Freeman, Rod (Monterey).....Cl396 |
| Barry, P.E. (PH) | Fusselman, Perry (H).....Cl540 |
| Bauer, Dr. H. (SF).....Al850 | Gandy, L.R. (Monte Vista) |
| Bazin, John (Atascadero).....Bl700 | Gellert, S.D. (Daly City).....Bl700 |
| Becarra, John (Paso Robles).....Cl500 | Gendusie, Frank (SSF) |
| Bendorf, Dr. R.P (Torrence) | Girdner, Wm. (Menlo PK) |
| Bennion, David R. (Loma Mar) | Gould, H.S. (N. Sac) |
| Bignaidi, Aldo (S.F.) | Gray, J.A. (Modesto) |
| Blauner, Robert (B) | Greene, J. (Irv).....Cl460 |
| Boeninger, R. (Palo Alto) | Greenberg, A.R. (B) |
| Bramhall, Tom (Sharp Park) | Hadley, Ernest (B) |
| Brown, W.M. (Menlo Park) | Hancock, C.F. (Castro Val.) |
| Bruce, Mrs. Starr (SF) | Handy, H.A. (San Br.) |
| Burger, Robert (L).....E2010 | Harris, Michael (SF) |
| Canty, Richard (SF).....Cl460 | Heims, E.H. (SF) |
| Cargill, Stanley (R) | Hicks, Mrs. G. (SSF) |
| Carroll, George (SF).....Cl560 | Hubbard, Dr. H.D. (SF).....Cl520 |
| Cashburn, Wm. (Daly City).....Bl668 | Hunter, J.L. (SF) |
| Chappell, L. H. (Monterey) | Hymans, E.J. (O).....Cl460 |
| Comerford, Mary (Sausalito).....Cl600 | Hyndman, H.G. (SF) |
| Conness, John (San Bruno).....Cl426 | Irick, Jay (Daly City).....Cl500 |
| Crowley, Andrew (Burlingame) | Jaruzel, Edmond (SF).....Bl764 |
| Culich, John R. (Menlo Pk).....Cl500 | Jenkins, Marsh (SF).....Cl500 |
| Cullen, Don E. (Menlo Pk) | Jimenez, Manuel (Daly City).....Cl500 |
| Curtis, Harry N. (Concord) | Johnson, Leonard (Castro Vy).....Cl540 |
| Czogalla, Hilda (SF).....Cl450 | Kahn, Alan (Napa).....Al814 |
| Daniloff, Dr. B.N. (SF) | Kaker, Trudie (SF) |
| Dean, Jeff (SF) | Karch, R.A. (San Lorenzo).....Al860 |
| DeJarnatt, Frank (Pedro Valley) | Kent, Davis H. (O) |
| deLlach, Mercedes (SF) | Kirkpatrick, J.N. (Sunnyvale) |
| Dillinger, Dale (SF).....Cl450 | Cohanek, C.W. (Santa Clara).....Cl500 |
| Dodd, Calvin C. (O) | Kovalevski, Nick (Palo Alto) |
| | Kraft, Kris L. (Mill Val.) |

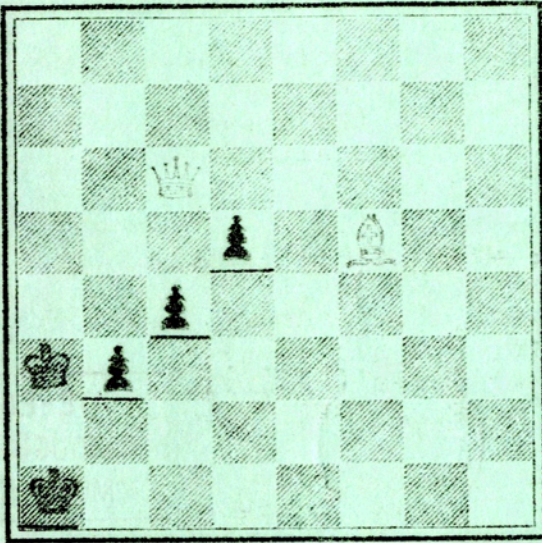
Krause, R.C. (SF)	Seim, Carl (SF)
Kressen, Frank (Pedro Val).....B1700	Shiffman, Max (Paso Robles)
Kuther, Max (Del Ray Oaks)	Shoemaker, T. (Santa Rosa)
Kyrk, Anthony (San Mateo)	Sieswerda, Afke (SF)
Larsson, C.G. (Walnut Crk).....Cl414	Singleton, Mike (San Lor).....Cl1414
Lester, Frank (Irv.).....Cl460	Skermetta, A. (San Lor).....Cl580
Lockridge, Hartnell (SF).....Cl340	Slanger, T. (B)
Lund, Anna (Lafy)	Solve, E.J. (San Mateo)
Lund, J.J. (O)	Sperry, A.B. (Mt. View)
Marin, Phil (Concord)	Statton, Harold (LA)
Mack, Dr. E.S. (SF)	Stapanovich, M.G. (P. Rob.)..B1700
Maffei, A.J. (PH)	Stevens, Louis (Rich)
McCord, W.E. (Rodeo)	Stevens, Wayne (Daly City)
McGillicuddy, K.G. (B).....Cl556	Stone, R.B. (Los Altos)
McIlvain, Jack (S.Cruz).....Cl592	Stradley, H.L. (O)
Messner, Paul (B)	Tambini, D. (B)
Meuwly, John (SF)	Tansey, David (Palo Alto)
Michalski, R.F. (Daly City)	Tautriella, M. (SF)
Mix, Lt. R.W. (Seaside)	Terramorse, S. (Saus).....Cl500
Moody, Wayne (San Mat.).....Cl500	Thibault, R. (San Jose)
Mortiz, Henry (San Mat.).....Cl500	Thompson, Doris (SF).....Cl334
Mortiz, Jules (Irv.).....Cl540	Thornton, Frank (SF)
Mysberg, F. (Carmel)	Ulp, W.J. (B)
Newcomer, Nathan (San Jose)....B1614	Vail, C.J. (Concord)
Nichols, Virginia (SF)	Vaughn, A. (SF)
Odenthal, Chas. (SF)	Vega, J. (SF)
O'Doan, LaRoy (Vallejo).....Cl540	Veteran, J. (Menlo Pk)
Ogden, Capt. M. (SF)	Vogl, David J. (Daly Cy)
Ontiveras, Gilbert (B)	Warner, I. (SF)
O'Quin, Michael (Paso Robles)..A1850	Weaver, E.G. (Mont)
Ostrander, R.J. (Colma)	Weinberg, F. (O)
Parker, Mrs. J.S. (SF)	Weiss, Dr. P.O. (SF)
Paul, Lt. W.R. (Monterey)	White, D. (San Raf).....Cl360
Pennington, B.B. (SF)	White, Larry (O).....Cl400
Perry, Louis (Palo Alto)	Whitehead, H.A. (Son)
Peterson, E.B. (San Carlos)	Whiteside, Glen (Colma)
Peterson, Jerry (San Lorenzo)..Cl400	Williamson, G. (Daly Cy)
Pradenas, Juan (San Mat.).....Cl500	
Pruett, Doug. (San Pablo).....Cl500	
Pust, L.M. (Santa Clara).....Cl500	
Reed, Estelle (Daly City)	
Rehagan, J.S. (Pacific Grove)	
Rehmus, C.M. (Redwood City)	
Reider, Dr. N. (SF)	
Reinhardt, Louise (SF)	
Ricchebono, J.P. (SF).....Cl450	
Richey, Kathleen (SF)	
Roane, Patricia (SF)	
Rodriguez, E. (Daly Cit).....B1600	
Rosen, Sgt. H.R. HAFB)	
Ross, Terry. (San Lor).....Cl418	
Roy, Elizabeth (SF).....Cl400	
Samuelian, Jack (San Mat)	
Schaeffer, M.A. (B)	
Schulz, Peter (San Mat)	
Schutt, Ray (H).....Cl500	
Schwartz, Janice (SF)	

THE PROBLEM PAGE

ANYONE WHO KNOWS THE MOVES OF CHESS CAN ENTER THIS PROBLEM COMPETITION WITH A GOOD POSSIBILITY OF WINNING A PRIZE. THERE WILL BE PROBLEMS TO INTEREST ALL RANGES OF TASTES AND TALENTS. SEND YOUR KEY MOVES TO OUR PROBLEM EDITOR: MR. JAMES SCHMERL, 20 GREENBANK AVENUE, PIEDMONT II, CALIFORNIA.

No 5

BLACK: 4

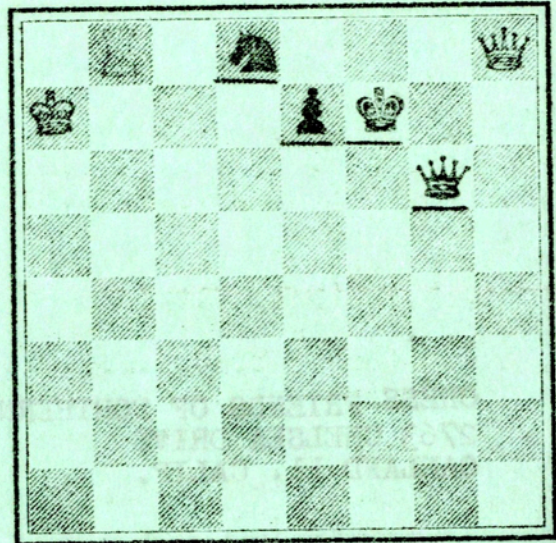


WHITE: 3

mate in two moves

No 6

BLACK: 4

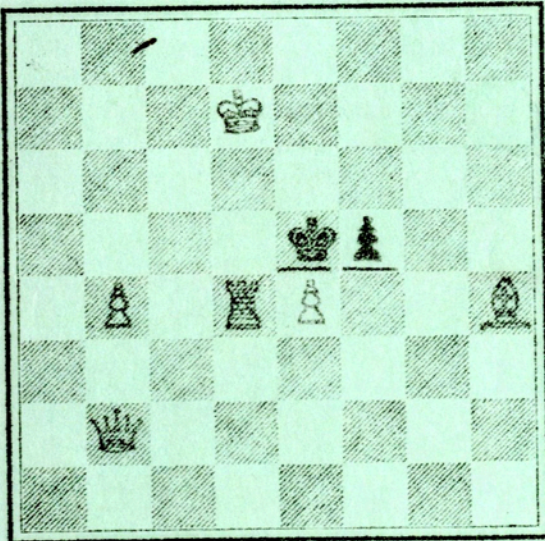


WHITE: 3

white takes back its last move and mates in one move

No 7

BLACK: 2

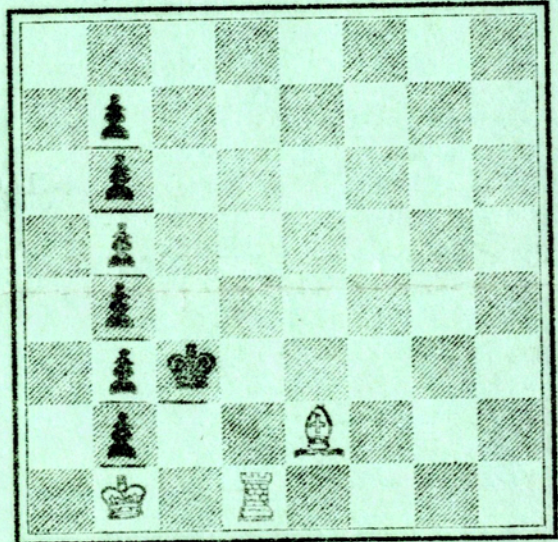


WHITE: 6

mate in two moves

No 8

BLACK: 7



WHITE: 3

mate in seven moves

WE HAVE INTRODUCED A NEW DEVICE TO MAKE IT A LITTLE MORE CERTAIN WHAT COLOR THE MEN ARE SUPPOSED TO BE BY UNDERLINING THE BLACK PIECES. HOPE THIS MAKES FOR CLARITY.

CHESS FRIENDS OF NORTHERN CALIF.
2763 CHELSEA DRIVE
OAKLAND 11, CALIF.



GIVE-ENG
THROUGH YOUR
COMMUNITY CHEST

RETURN POSTAGE GUARANTEED

William O. Jens
2956 Joaquin Miller Rd.
Oakland 2, Calif.