

THE CALIFORNIA CHESS REPORTER

Vol. XII, No. 3

\$2 per year

November, 1962

THE CALIFORNIA CHESS REPORTER, 244 Kearny Street, San Francisco 8

Monthly except January, March, August, and October

Official Organ of the California State Chess Federation

Editor: Guthrie McClain

Associate Editors: Gordon S. Barrett, Los Angeles; Dr. Mark W. Eudey, Berkeley;

Neil T. Austin, Sacramento; Irving Rivise, Los Angeles

Games Editor: Robert E. Burger

Guest Annotator: Intl. Master Imre Konig

Second-class postage paid at San Francisco, California

CONTENTS

Herman Steiner Memorial Open..	34-35	San Gabriel Valley Open	43
Mechanics' Institute	36	Westchester Club.	44
Oakland WMCA vs. Morphy.	36	Southern Calif. Qualifying	44-45
Metropolitan Open.	37-38	Game of the Month.	46
Southern California Amateur.	38-40	Games	47-50
Bernard Oak Memorial Open.	40-41	Will Irwin	51
Riverside Open.	41-42	Statement of Ownership	51
Polonia Open.	43	Tasks	52

HOLLYWOOD: Bill Addison of San Francisco took first place in the Herman Steiner Memorial Open held in September. Addison had a 7-1 score. There was a three-way tie for second between Bob Jacobs, Jim Laxos, and Saul Yarmak. Forty-six players competed.

SAN FRANCISCO: Tom Heimberg won the open tournament held in September with a perfect 7-0 score. Ray Menaster was second, $5\frac{1}{2}$ - $1\frac{1}{2}$.

LOS ANGELES: Tony Saily of New York won the Metropolitan Open, held at the City Terrace club in November, by a margin of half a point over Morris Gordon and Bill Addison, runners up.

SANTA MONICA: Wilson Alza won the Southern California Amateur Open in October with the good score of 7-1. First prize was \$300!

BILL ADDISON WINS HERMAN STEINER MEMORIAL OPEN

William G. Addison of San Francisco took first prize in the Open held at the Herman Steiner club September 15-16 and 22-23, 1962. Addison lost only one game as he posted a 7-1 score to head a strong field of 46 players. Addison, parenthetically, has now become a permanent resident of Southern California. He dropped in from the North in June to win the Southern California Open (a week after winning the Hamilton A. F. B. Open in the North), returned in August to tie for second place in the Pacific and South-west Open at Santa Monica, went to Fresno for a second prize on Labor Day in the California Open, and then participated as a Southerner in the Southern California Championship. All this traveling was evidently too much, and he now resides where most of the action is taking place.

Tied for second to fourth places were Bob Jacobs, Jim Lazos, and Saul Yarmak with 6-2 scores. There followed: Emil Bersbach, Jerry Hanken, and Tibor Weinberger $5\frac{1}{2}$ - $2\frac{1}{2}$, and Sven Almgren, David Conwit, J. Levin, Paul Quillen, and Irving Rivise, all with 5-3.

The strength of the tournament is evident from the also-rans: Zoltan Kovacs, Walt Cunningham, etc. For six of the eight rounds Jerry Hanken led the way $5\frac{1}{2}$ - $\frac{1}{2}$, having defeated Addison, Lazos, Rivise and Cunningham, but then the redoubtable Weinberger and Yarmak threw up roadblocks. Meanwhile, Addison polished off Rivise and Weinberger in the last two rounds.

First prize was \$150 plus a trophy. Second prize was \$75 and third was \$50. There were three class prizes: Class A, \$40; Class B, \$30; Class C, \$20. Special prizes were awarded as follows: Best Played Game (1st Prize) Bob Jacobs against D. Conwit; (2nd Prize) Paul Quillen against L. Domanski; Brilliancy Prize, David Conwit against A. Gates. Herbert T. Abel of Santa Monica was Tournament Director.

HERMAN STEINER MEMORIAL OPEN, 1962

	1	2	3	4	5	6	7	8	Score
1. Addison W.	W29	L5	W20	W23	W6	W4	W8	W7	7 - 1
2. Jacobs R.	W20	W46	D5	W16	L13	W9	W10	D3	6 - 2
3. Lazos J.	W12	D9	W46*	L5	W11	W25	W13	D2	6 - 2
4. Yarmak S.	W42	L8	W36	W34	W14	L1	W20	W5	6 - 2
5. Hanken J.	W33	W1	D2	W3	W8	W13	L7	L4	$5\frac{1}{2}$ - $2\frac{1}{2}$
6. Bersbach E.	W22	W39	L8	W21	L1	D12	W15	W13	$5\frac{1}{2}$ - $2\frac{1}{2}$
7. Weinberger	W26	L14	W25	W9	W32	D8	W5	L1	$5\frac{1}{2}$ - $2\frac{1}{2}$

H. Steiner Mem. Open	1	2	3	4	5	6	7	8	Score
8. Rivise I.	W27	W4	W6	W37	L5	D7	L1	D9	5 - 3
9. Conwit	W45	D3	W10	L7	W38	L2	W27	D8	5 - 3
10. Quillen P.	D25	W17	L9	W15	D16	W14	L2	W20	5 - 3
11. Almgren S.	W21	L32	W33	D38	L3	W23	D17	W24	5 - 3
12. Levin J.	L3	L28	W40	W43	W29	D6	W25	D16	5 - 3
13. Cunningham	W17	W15	D16	W14	W2	L5	L3	L6	4½-3½
14. Gordon M.	W24	W7	W38	L13	L4	L10	D26	W27	4½-3½
15. Burke F.	W30	L13	D28	L10	W21	W22	L6	W25	4½-3½
16. Standers L.	W44	W34	D13	L2	D10	L20	W36	D12	4½-3½
17. Leidner M.	L13	L10	W45	W35	D23	W38	D11	D18	4½-3½
18. Katzel R.	L37	L36	D22	W40	W42	D19	W38*	D17	4½-3½
19. Kupersmith	W43	L38	L21	W28	L25	D18	W30	W26	4½-3½
20. Domanski L.	L2	W40	L1	W44	W26	W16	L4	L10	4 - 4
21. Wilson W.	L11	W22	W19	L6	L15	L26	W35	W33	4 - 4
22. Chapman W.	L6	L21	D18	W31	W28	L15	W42	D23	4 - 4
23. Stani K.	W40	L37	W39	L1	D17	L11	W41	D22	4 - 4
24. Parker S.	L14	D31	D27	L26	W39	W29	W33	L11	4 - 4
25. Kennedy E.	D10	W41	L7	W42*	W19	L3	L12	L15	3½-4½
26. Rasis C.	L7	W35	L34	W24	L20	W21	D14	L19	3½-4½
27. Gates A.	L8	D42	D24	W39	W34	D32	L9	L14	3½-4½
28. Whittemore	L46	W12	D15	L19	L22	D42	W34	D29	3½-4½
29. Sacks A.	L1	W45*	W43	L32	L12	L24	W39	D28	3½-4½
30. Fagin V.	L15	L33	L44	D41	W31	W40	L19	W42	3½-4½
31. Kahl M.	L34	D24	L42	L22	L30	W45	W44	W41	3½-4½
32. Kovacs Z.	W36	W11	L37	W29	L7	D27	- -	- -	3½-4½
33. Portillo L.	L5	W30	L11	L36	W43	W34	L24	L21	3 - 5
34. Pease R.	W31	L16	W26	L4	L27	L33	L28	W44	3 - 5
35. Gaston	L39	L26	W41	L17	W44	L36	L21	W43	3 - 5
36. Bullockus	L32	W18	L4	W33	- -	W35	L16	- -	3 - 5
37. Ronning B.	W18	W23	W32	L8	- -	- -	- -	- -	3 - 5
38. Gross R.	W41	W19	L14	D11	L9	L17	L18*	- -	2½-5½
39. Castleberry	W35	L6	L23	L27	L24	W43	L29	D40	2½-5½
40. Forrest K.	L23	L20	L12	L18	W By	L30	W45	D39	2½-5½
41. Jester T.	L38	L25	L35	D30	W45	W44	L23	L31	2½-5½
42. Smith	L4	D27	W31	L25*	L18	D28	L22	L30	2 - 6
43. Miller D.	L19	W44	L29	L12	L33	L39	W By	L35	2 - 6
44. Rader H.	L16	L43	W30	L20	L35	L41	L31	L34	1 - 7
45. McDonald	L9	L29*	L17	W By	L41	L31	L40	- -	1 - 7
46. Enequist L.	W28	L2	L3*	- -	- -	- -	- -	- -	1 - 7

* Forfeit

MECHANICS' INSTITUTE

Thomas Heimberg won the open tournament held in September with a perfect 7-0 score. Ray Menaster took second, $5\frac{1}{2}$ - $1\frac{1}{2}$.

	1	2	3	4	5	6	7	8	Score
1. T. Heimberg	X	2	1	1	1	1	1	1	7 - 0
2. R. Menaster	0	X	1	1	$\frac{1}{2}$	1	1	1	$5\frac{1}{2}$ - $1\frac{1}{2}$
3. A. Friedman	0	0	X	$\frac{1}{2}$	$\frac{1}{2}$	1	$\frac{1}{2}$	1	$3\frac{1}{2}$ - $3\frac{1}{2}$
4. M. Morris	0	0	$\frac{1}{2}$	X	$\frac{1}{2}$	1	$\frac{1}{2}$	1	$3\frac{1}{2}$ - $3\frac{1}{2}$
5. O. Shank	0	$\frac{1}{2}$	$\frac{1}{2}$	$\frac{1}{2}$	X	0	1	1	$3\frac{1}{2}$ - $3\frac{1}{2}$
6. J. Hamilton	0	0	0	0	1	X	1	1	3 - 4
7. R. Black	0	0	$\frac{1}{2}$	$\frac{1}{2}$	0	0	X	0	1 - 6
8. J. Brennan	0	0	0	0	0	0	1	X	1 - 6

In a warm-up team match with The Valley's team of the Redwood Empire League, the B team scored a 6-2 victory on October 12. The scores:

<u>MECHANICS' INSTITUTE</u>		<u>VALLEJO</u>	
1. Nielsen	0	1. Wirtane	1
2. Shank	1	2. Mongan	0
3. Lee	1	3. Packard	0
4. Jong	1	4. Comeau	0
5. Vayssie	0	5. Tomkins	1
6. Morris	1	6. Cooper	0
7. Friedman	1	7. Harris	0
8. Black	<u>1</u>	8. Rhoades	<u>0</u>
	6		2

OAKLAND YMCA DEFEATS MORPHY CLUB

In a Chess Friends title match, the Oakland "Y" defeated the strong Morphy Club of Redwood City on November 17. The scores:

<u>OAKLAND YMCA</u>		<u>MORPHY</u>	
1. Cuneo	1	1. Cleghorn	F
2. Trenberth	1	2. Kane	0
3. Hedrick	0	3. McIlrath	1
4. Cook	0	4. Burlingame M.	1
5. Quinlivan	1	5. Bogdanoff	0
6. Horne	<u>1</u>	6. Burlingame E.	<u>0</u>
	4		2

TONY SAIDY METROPOLITAN OPEN CHAMPION

Dr. Anthony Saily of New York added another laurel to his southern California chess reputation by winning the important Metropolitan Open and its first prize of \$125. Saily won five of his six games and allowed a draw to Bill Addison, who tied for second with Morris Gordon. Gordon lost only to Saily. Addison also drew with Charles Henin of Chicago, who tied for fourth with unrated F. Frank. Class trophies: A, R. Kluz; B, R. Whittemore; C, T. Jester. The tournament was held at the City Terrace club.

METROPOLITAN OPEN 1962

	1	2	3	4	5	6	Score	Tie-Br.
1. Saily A.	W16	W2	W6	W4	D3	W7	5½ - ½	
2. Gordon M.	W30	L1	W19	W9	W12	W11	5 - 1	14½
3. Addison W.	W25	W29	W18	W21	D1	D4	5 - 1	13½
4. Henin C.	W22	W11	W13	L1	W6	D3	4½ - 1½	16
5. Frank F.	L14	W24	D11	W26	W17	W12	4½ - 1½	11½
6. Hanken J.	W24	W14	L1	W8	L4	W18	4 - 2	14½
7. Barlai I.	W8	W17	L21	W20	W13	L1	4 - 2	13½
8. Kluz R.	L7	W33	W10	L6	W20	W13	4 - 2	13½
9. Metz F.	W23	D12	W16	L2	D15	W14	4 - 2	12
10. Yarmak	W19	L13	L8	W30	W25	W15	4 - 2	10½
11. Fries T.	W27	L4	D5	W24	W21*	L2	3½ - 2½	14½
12. Bersbach E.	W26	D9	W14	W29	L2	L5	3½ - 2½	14
13. Vitanyi L.	W28	W10	L4	W18	L7	L8	3 - 3	15
14. Stani K.	W5	L6	L12	W19	W23	L9	3 - 3	14½
15. Weinbaum S.	W20	L21	W25	D17	D9	L10	3 - 3	13
16. Zizda J.	L1	W30	L9	D23	W29*	D17	3 - 3	12
17. Hufnagel F.	W33	L7	W23	D15	L5	D16	3 - 3	12
18. Laver R.	W34	W32	L3	L13	W22	L6	3 - 3	11
19. Whittemore R.	L10	W28	L2	L14	W31	W24	3 - 3	10½
20. Stumbrs O.	L15	W31	W34*	L7	L8	W26	3 - 3	10
21. Freed J.	W31	W15	W7	L3	L11	- -	3 - 3	8
22. Rader H.	L4	L27	W32	W31	L18	W25	3 - 3	7½
23. Jester T.	L9	W26	L17	D16	L14	W30	2½ - 3½	
24. Katzl R.	L6	L5	W28	L11	W32	L19	2 - 4	12½
25. Gish R.	L3	W34*	L15	W27	L10	L22	2 - 4	12
26. Oganessov Y.	L12	L23	W33	L5	W27	L20	2 - 4	10½
27. Pease R.	L11	W22	L29	L25	L26	W28	2 - 4	9
28. Stumbrs D.	L13	L19	L24	W By	W30	L27	2 - 4	8

Metro. Open	1	2	3	4	5	6	Score	Tie-Br.
29. Conwit D.	W32	L3	W27	L12	L16*	- -	2 - 4	6½
30. Kessel J.	L2	L16	W31	L10	L28	L23	1 - 5	10½
31. Allen A.	L31	L20	L30	L22	L19	W32	1 - 5	9½
32. Miller D.	L29	L18	L22	W33	L24	L31	1 - 5	8½
33. Freed H.	L17	L8	L26	L32	W By	- -	1 - 5	7
34. Abshear R.	L18	L25*	L20*	- -	- -	- -	0 - 6	

* Forfeit

ALZA WINS \$300 FIRST PRIZE IN SOUTHERN CALIFORNIA AMATEUR

Wilson Alza of the Herman Steiner club won the second annual Southern California Amateur Open, held at Santa Monica October 20-21 and 27-28, with a good score of 7-1. Alza won six games and drew with E. Stepan and H. Milner. Second prize of \$150 and third prize of \$75 were shared by R. Larsen, K. Stani, K. Pfeiffer, and Milner. A consolation section was won by R. Gish. The tournament, which was limited to players rated less than 2,000, was directed by H. T. Abel.

SOUTHERN CALIFORNIA AMATEUR OPEN 1962

	1	2	3	4	5	6	7	8	Score
1. Alza W.	W69	D36	W65	W4	W35	W12	W2	D5	7 - 1
2. Larsen R.	W53	W13	D4	W3	W36	W8	L1	W11	6½-1½
3. Stani K.	W55	W49	D10	L2	W39	W24	W26*	W8	6½-1½
4. Pfeiffer K.	W74	W38	D2	L1	W37	W35	W10	W12	6½-1½
5. Milner H.	L43	W51	W17	W31	W21	W29	W11	D1	6½-1½
6. Smyth F.	D35	W57	L14	D66	W42	W21	W13	W23	6 - 2
7. Sachs A.	D32	W37	L26	D46	W40	W33	W29	W20	6 - 2
8. Rogosin H.	W62	W27	W44	W12	D11	L2	W22	L3	5½-2½
9. Kennedy E.	W60	W23	D16	L11	L10	W45*	W35*	W30	5½-2½
10. Geller S.	W33	W22	D3	L35	W9	W36	L4	D14	5 - 3
11. Kupersmith L.	W15	D46	W30	W9	D8	W20	L5	L2	5 - 3
12. Sheridan G.	W52	W28	W47	L8	W41	L1	W17	L4	5 - 3
13. Bean E.	W40	L2	L28	W70	W19	W38	L6	W33	5 - 3
14. Hill S.	W72	D45	W6	D22	L20	D15	W30	D10	5 - 3
15. Godlberg S.	L11	L21	W51	W62	W47*	D14	W24	D18	5 - 3
16. Rasis C.	W63	W31	D9	L26	W44	L22	D28	W27	5 - 3
17. O'Neill H.	L27	W62	L5	W68	W32	W34	L12	W28	5 - 3
18. Henderson C.	L61	W63	L43	W55	D25	W44	W36*	D15	5 - 3
19. Hatch A.	L30	W69	W59	L21	L13	W31	W39	W29	5 - 3
20. Kazimierczak	L47	W73	W68	W42	W14	L11	W27	L7	5 - 3

So.	Cal. Amateur	Open	1	2	3	4	5	6	7	8	Score
21.	Stumbrs O.		L45	W15	W27	W19	L5	L6	W34	D25	4½-3½
22.	Metz F.		W54	L10	W49	D14	W43*	W17	L8	- -	4½-3½
23.	Reina M.		W58	L9	W40	D28	W45	L26	W38*	L6	4½-3½
24.	Bliss R.		W75	W61	W25	L36	D38	L3	L15	W37	4½-3½
25.	Kluz R.		W64	W71	L24	L29	D18	D39	W41	D21	4½-3½
26.	Rogosin D.		W73	D65	W7	W16	L29	W23	L3*	- -	4½-3½
27.	Kerllenevich M.		W17	L8	L21	W63	W28	W41	L20	L16	4 - 4
28.	Chapman W.		W29	L12	W13	D23	L27	W48*	D16	L17	4 - 4
29.	Fries T.		L28	W58	W71*	W25	W26	L5	L7	L19	4 - 4
30.	Pease R.		W19	W56	L11	L41	W46	W37	L14	L9	4 - 4
31.	Pollard B.		W41	L16	W56	L5	L34	L19	W By	W46	4 - 4
32.	Gates A.		D7	L35	D70	W58	L17	W40	L33	W39	4 - 4
33.	Domanski L.		L10	W74	L42	W61	W48	L7	W32	L13	4 - 4
34.	Bullockus T.		L56	W75	L39	W52	W31	L17	L21	W40	4 - 4
35.	Christy J.		D6	W32	W45	W10	L1	L4	L9*	- -	3½-4½
36.	Stepans E.		W67	D1	W46	W24	L2	L10	L18*	- -	3½-4½
37.	Johnson L.		D57	L7	W54	W65	L4	L30	W44*	L24	3½-4½
38.	Iwasita J.		W66	L4	W64	W48	D24	L13	L23*	- -	3½-4½
39.	Hoessly C.		L46	W50	W34	D44	L3	D25	L19	L32	3 - 5
40.	Yudkoff		L13	W59	L23	W56	L7	L32	W46	L34	3 - 5
41.	Kern G.		L31	W53	W61	W30	L12	L27	L25*	- -	3 - 5
42.	Berres R.		W50	L47	W33	L20	L6	W46	- -	- -	3 - 5
43.	Turner J.		W5	L44	W18	W47	L22*	- -	- -	- -	3 - 5
44.	Saadi M.		W51	W43	L8	D39	L16	L13	L37	- -	2½-5½
45.	Owen J.		W21	D14	L35	W57	L23	L5*	- -	- -	2½-5½
46.	Turgeon G.		W39	D11	L36	D7	L30	L42	L40	L31	2 - 6
47.	McCartney		W20	W42	L12	L43	L15*	- -	- -	- -	2 - 6
48.	Hernandez J.		L71	W55	W67	L38	L33	L28*	- -	- -	2 - 6

CONSOLATION SECTION

49.	Gish R.		W68	L3	L22	D50	W54	D55	W57	W51	5 - 3
50.	Difulvio J.		L42	L39	W74	D49	W60	W63	L51	W54	4½-3½
51.	Whittemore R.		L44	L5	L15	W75	W68	W53	W50	L49	4 - 4
52.	Fagin W.		L12	L64	W53	L34	- -	W58	W61	W56	4 - 4
53.	Jensen N.		L2	L41	L52	W By	W56	L51	W63*	D57	3½-4½
54.	O'Bryan D.		L22	D60	L37	W59	L49	W68	W55	L50	3½-4½
55.	Katzl R.		L3	L48	W75	L18	W62	D49	L54	W61	3½-4½
56.	Anderson J.		W34	L30	L31	L40	L53	W59	W60	L52	3 - 5
57.	Smith A.		D37	L6	W72*	L45	L61	W62	L49	D53	3 - 5
58.	Collins B.		L23	L29	W69	L32	L63	L52	W68	W62	3 - 5

So. Cal. Amateur	Open	1	2	3	4	5	6	7	8	Score
59. Bullockus A.	W By	L40	L19	L54	W73*	L56	L62	W68	3 - 5	
60. Teal W.	L9	D54	L66	W73	L50	W61	L56	- -	2½-5½	
61. Miller D.	W18	L24	L41	L33	W57	L60	L52	L55	2 - 6	
62. Ross B.	L8	L17	W By	L15	L55	L57	W59	L58	2 - 6	
63. Ellis T.	L16	L18	W73	L27	W58	L50	L53*	- -	2 - 6	
64. Kakimi B.	L25	W52	L38	D67	- -	- -	- -	- -	1½-6½	
65. Busch D.	W70	D26	L1	L37	- -	- -	- -	- -	1½-6½	
66. Myhro R.	L38	L67	W60	D6	- -	- -	- -	- -	1½-6½	
67. Weil D.	L36	W66	L48	D64	- -	- -	- -	- -	1½-6½	
68. Bullockus Jr.	L49	W By	L20	L17	L51	L54	L58	L59	1 - 7	
69. Kollmer A.	L1	L19	L58	W74*	- -	- -	- -	- -	1 - 7	
70. Oster R.	L65	D72	D32	L13	- -	- -	- -	- -	1 - 7	
71. Dohmen V.	W48	L25	L29*	- -	- -	- -	- -	- -	1 - 7	
72. Kempner A.	L14	D70	L57*	- -	- -	- -	- -	- -	½ - 7½	
73. Glassberg S.	L26	L20	L63	L60	L59*	- -	- -	- -	0 - 8	
74. Howeth W.	L4	L33	L50	L69*	- -	- -	- -	- -	0 - 8	
75. Sparkuhl H.	L24	L34	L55	L51	- -	- -	- -	- -	0 - 8	

* Forfeit

YARMAK WINS BERNARD OAK MEMORIAL OPEN

Saul Yarmak, former U. S. Junior Champion, took the honors in fine style at the City Terrace club in September and October. Yarmak only had one draw, to D. Conwit. Conwit tied for second with Imre Barlai, former California college champion, and Emil Bersbach. Yarmak won \$80 and the three runners-up \$33. The scores:

BERNARD OAK MEMORIAL OPEN, SEPTEMBER-OCTOBER 1962

	1	2	3	4	5	6	7	Score
1. Yarmak S.	W33	W17	W16	D3	W22	W2	W4	6½ - ½
2. Barlai I.	W14	W24	D8	W9	W3	L1	W5	5½ - 1½
3. Conwit D.	W38	W20	W7	D1	L2	W9	W13	5½ - 1½
4. Bersbach E.	W18	D11	W15	W26	W8	W6	L1	5½ - 1½
5. Jimenez M.	W43	L7	W18	W10	W23	W13	L2	5 - 2
6. Hultgren N.	W25	W10	W22	L8	W21	L4	W15	5 - 2
7. Pease R.	W23	W5	L3	W24	L13	W22	W14	5 - 2
8. Barrett G.	W27	W36	D2	W6	L4	D15	D10	4½ - 2½
9. Freed J.	W40	D39	W11	L2	W20	L3	W21	4½ - 2½
10. Keesey H.	W41	L6	W19*	L5	W31	W25	D8	4½ - 2½
11. Kluz R.	W35	D4	L9	L21	W37	W23	W20	4½ - 2½
12. Rains S.	L13	W30	L23	W28	W16	D21	W26*	4½ - 2½
13. Kovac J.	W12	L22	W14	W17	W7	L5	L3	4 - 3

Bernard Oak Mem. Open	1	2	3	4	5	6	7	Score
14. Salter S.	L2	W37	L13	W19	W38*	W24	L7	4 - 3
15. Gish R.	W37	D31	L4	W38	W26	D8	L6	4 - 3
16. Kakimi B.	W32	W19	L1	L22	L12	W27	W24	4 - 3
17. Swett C.	W28	L1	W31	L13	L25	W30	W22	4 - 3
18. Katzl R.	L4	W29	L5	D37	W34*	D26	W25	4 - 3
19. Berres R.	W By	L16	L10*	L14	W41*	W28	W33	4 - 3
20. Oganessov Y.	W34	L3	W28	D23	L9	W31	L11	3½-3½
21. Parker S.	L39	W35	W27	W11	L6	D12	L9	3½-3½
22. Klein E.	W30	W13	L6	W16	L1	L7	L17	3 - 4
23. Frilling Fk.	L7	W40	W12	D20	L5	L11	D29	3 - 4
24. Rader H.	W29	L2	W25	L7	W27	L14	L16	3 - 4
25. Seiden R.	L6	W41*	L24	W30	W17	L10	L18	3 - 4
26. Reina M.	D31	W32	W39	L4	L15	D18	L12*	3 - 4
27. Frilling Fd.	L8	W42	L21	W41	L24	L16	W34	3 - 4
28. Figueroa B.	L17	W33	L20	L12	W32	L19	W42	3 - 4
29. Freed H.	L24	L18	D33	L31	W42	W38*	D23	3 - 4
30. Cohan R.	L22	L12	W32	L25	W40	L17	W37	3 - 4
31. Murphy J.	D26	D15	L17	W29	L10	L20	D32	2½-4½
32. Goddard H.	L16	L26	L30	W35	L28	W41*	D31	2½-4½
33. Nicholson N.	L1	L28	D29	L34	W35	W37	L19	2½-4½
34. Carter R.	L20	D38	L36	W33	L18*	W40	L27	2½-4½
35. Culotta P.	L11	L21	L38	L32	L33	W42	W40	2 - 5
36. Gaylor E.	W42	L8	W34	- -	- -	- -	- -	2 - 5
37. Glassberg	L15	L14	W42	D18	L11	L33	L30	1½-5½
38. Castleberry	L3	D34	W35	L15	L14*	L29*	- -	1½-5½
39. Allen A.	W21	D9	L26	- -	- -	- -	- -	1½-5½
40. Eckert E.	L9	L23	L41	W42	L30	L34	L35	1 - 6
41. Atwood R.	L10	L25*	W40	L27	L19*	L32*	- -	1 - 6
42. Murphy S.	L36	L27	L37	L40	L29	L35	L28	0 - 7
43. Montez R.	L5	- -	- -	- -	- -	- -	- -	0 - 7

* Forfeit

CHARLES HENIN WINS AT RIVERSIDE

Charles Henin of Chicago, the latest chessmaster to join the ranks of southern California players, scored a brilliant victory in the first annual Riverside Open, held in November. Henin's 5½-1½ score earned him the \$100 first prize by a margin of half a point over second-place D. Conwit.

RIVERSIDE OPEN, NOVEMBER 1962

	1	2	3	4	5	6	Score	Tie-Br.
1. Henin C.	W12	W40	W2	W25	D7	W3	5½-1½	

Riverside Open	1	2	3	4	5	6	Score	Tie-Br.
2. Conwit D.	W33	W15	L1	W21	W13	W7	5 - 1	
3. Barlai I.	D26	W14	W9	W8	W6	L1	4½-1½	16
4. Wicher E.	W34	D20	D10	W18	W11	D5	4½-1½	14
5. Jacobs R.	W41*	W18	D25	D11	W10	D4	4½-1½	13½
6. Walker C.	W27	W17	D11	W15	L3	W23	4½-1½	13
7. Lazos J.	W32	W31	D8	W16	D1	L2	4 - 2	14
8. Turman W.	W37	W13	D7	L3	D16	W18	4 - 2	14
9. Tossas J.	W28	D19	L3	W14	W25	D12	4 - 2	13
10. Michaels M.	D14	W26	D4	W31	L5	W16	4 - 2	13
11. Metz F.	W35	W36	D6	D5	L4	W17	4 - 2	13
12. Keeseey H.	L1	W30	D29	W20	W19	D9	4 - 2	12½
13. Alza W.	W29	L8	W17	W32	L2	W28	4 - 2	12
14. Smyth F.	D10	L3	W23	L9	W26	W27	3½-2½	13½
15. Castle R.	W39	L2	W40	L6	D28	W25	3½-2½	12
16. Sloan S.	D20	W35	W19	L7	D8	L10	3 - 3	14
17. Whittemore R.	W24	L6	L13	W37	W20	L11	3 - 3	14
18. Kern G.	W38	L5	W27	L4	W22	L8	3 - 3	13½
19. Simon K.	W30	D9	L16	W29	L12	D21	3 - 3	12½
20. Frank F.	D16	D4	W32	L12	L17	W33	3 - 3	12
21. Detrich J.	L40	W22	W28	L2	D27	D19	3 - 3	11
22. Giles W.	L25	L21	W26	W40*	L18	W29	3 - 3	10½
23. Peterson R.	W By	L25	L14	W34	W31	L6	3 - 3	9½
24. Troy A.	L17	W33	L31	L27	W39	W32	3 - 3	8½
25. Scheuerman J.	W22	W23	D5	L1	L9	L15	2½-3½	14½
26. Kleinick M.	D3	L10	L22	W30	L14	W36	2½-3½	13
27. Wicher A.	L6	W34	L18	W24	D21	L14	2½-3½	12½
28. Katzl R.	L9	W38	L21	W33	D15	L13	2½-3½	12½
29. Allen B.	L13	W37	D12	L19	W36	L22	2½-3½	11½
30. Myers R.	L19	L12	D36	L26	W38	W31	2½-3½	9
31. Vitanyi L.	W36	L7	W24	L10	L23	L30	2 - 4	12½
32. Turner J.	L7	W39	L20	L13	W37	L24	2 - 4	11½
33. Allen W.	L2	L24	W39	L28	W34	L20	2 - 4	10
34. Johnson M.	L4	L27	W35	L23	L33	W39*	2 - 4	9
35. Ross B.	L11	L16	L34	L36	W By	W37	2 - 4	7
36. Gosline R.	L31	L11	D30	W35	L29	L26	1½-4½	
37. Hendy A.	L8	L29	W38	L17	L32	L35	1 - 5	9
38. Hunt G.	L18	L28	L37	L39	L30	W By	1 - 5	7½
39. Allen A.	L15	L32	L33	W38	L24	L34*	1 - 5	7
40. Skrypzak S.	W21	L1	L15	L22*	- -	- -	1 - 5	6½
41. Noel L.	L5*	- -	- -	- -	- -	- -	0 - 6	

* Forfeit

OFFENBACH EDGES GOLISZ IN POLONIA OPEN

Z. Offenbach and Golisz tied for first place in the Open held at the Polonia club during October and November with $5\frac{1}{2}$ scores, and Offenbach won the title by virtue of 18 $\frac{3}{4}$ tie-breaking points to 18 $\frac{1}{4}$.

POLONIA OPEN, OCTOBER-NOVEMBER 1962

	1	2	3	4	5	6	Score	Tie-br.
1. Offenbach	W16	W3	W5	D2	W9	W6	$5\frac{1}{2} - \frac{1}{2}$	18 $\frac{3}{4}$
2. Golisz	W13	W8	W9	D1	W3	W4	$5\frac{1}{2} - \frac{1}{2}$	18 $\frac{1}{4}$
3. Bukey	W7	L1	W6	W4	L2	W9	4 - 2	
4. Domanski	W10	W6	W14	L3	W5	L2	$3\frac{1}{2} - 2\frac{1}{2}$	10 $\frac{1}{4}$
5. Fineberg	W14	W11	L1	W10	L4	D7	$3\frac{1}{2} - 2\frac{1}{2}$	9 $\frac{3}{4}$
6. Cromie	W17	D4	L3	W18*	W8	L1	$3\frac{1}{2} - 2\frac{1}{2}$	7 $\frac{3}{4}$
7. Walczak	L3	W17	L12	W16	W15	D5	$3\frac{1}{2} - 2\frac{1}{2}$	3 $\frac{3}{4}$
8. Katona	W11	L2	W18*	L9	L6	W10	3 - 3	7
9. Wheeler	W15	W18	L2	W8	L1	L3	3 - 3	6
10. Francis	L4	W12	W16	L5	W14	L8	3 - 3	6
11. Zevin	L8	L5	L13	W17	W12	W15	3 - 3	6
12. Mosby	L18	L10	W7	L14	L11	W13	2 - 4	$5\frac{1}{2}$
13. Clary	L2	L14	W11	L15	W16	L12	2 - 4	5
14. Smoak	L5	W13	L4	W12	L10	L17*	2 - 4	4
15. Nowowiejski	L9	L16	W17	W13	L7	L11	2 - 4	4
16. Wagner	L1	W15	L10	L7	L13	W By	2 - 4	2
17. Outland	L6	L7	L15	L11	W By	W14*	2 - 4	2
18. Kurowicz	W12	L9	L8*	L6*	-	-	1 - 5	

* Forfeit

LARSEN WINS SAN GABRIEL VALLEY OPEN AT PASADENA

A. Larsen of Pasadena won the San Gabriel Valley Open with a $5\frac{1}{2}$ score, a full point ahead of J. Porth in second place. The scores:

SAN GABRIEL VALLEY OPEN 1962

	1	2	3	4	5	6	Score	Tie-br.
1. Larsen A.	W3	W4	W2	W9	W5	D6	$5\frac{1}{2} - \frac{1}{2}$	
2. Porth J.	W10	W7	L1	W6	D4	W8	$4\frac{1}{2} - 1\frac{1}{2}$	
3. Carr M.	L1	W10	L6	W11	W9*	W4	4 - 2	
4. Kotz R.	W6	L1	W5	W8	D2	L3	$3\frac{1}{2} - 2\frac{1}{2}$	15
5. Adams E.	D9	W8	L4	W7	L1	W12	$3\frac{1}{2} - 2\frac{1}{2}$	13
6. Hultgren N.	L4	W12	W3	L2	W11	D1	$3\frac{1}{2} - 2\frac{1}{2}$	$12\frac{1}{2}$
7. Abe G.	W12	L2	L9	L5	W10	W11	3 - 3	$9\frac{1}{2}$
8. Tapia W.	W11	L5	W10	L4	W12	L2	3 - 3	$9\frac{1}{2}$
9. Walmisley R.	D5	W11	W7	L1	L3*	L10*	$2\frac{1}{2} - 3\frac{1}{2}$	
10. Riordan R.	L2	L3	L8	W12	L7	W9*	2 - 4	
11. Scharer R.	L8	L9	W12	L3	L6	L7	1 - 5	
12. Krug H.	L7	L6	L11	L10	L8	L5	0 - 6	

BLISS WESTCHESTER CLUB CHAMPION

Bob Bliss is the 1962 club champion at Westchester, having scored $5\frac{1}{2}-\frac{1}{2}$ in the six-round Swiss completed in October. Bliss drew in the first round with Alan Dorn, who later had to withdraw. Dr. Ted Bullockus won the second prize over J. Mathews on tie-breaking points. Joe Kalivoda won the Westchester Handicap Trophy. The scores:

WESTCHESTER CLUB CHAMPIONSHIP 1962

	1	2	3	4	5	6	Score	Tie-br.
1. Bliss R.	D15	W16	W8	W5	W2	W4	$5\frac{1}{2}-\frac{1}{2}$	
2. Bullockus T.	W9	W8	D5	W3	L1	W6	$4\frac{1}{2}-1\frac{1}{2}$	19 3/4
3. Mathews J.	D16	W15*	W4	L2	W5	W7	$4\frac{1}{2}-1\frac{1}{2}$	15 3/4
4. Johnson L.	W13	W7	L3	W11	W6	L1	4 - 2	
5. Cooper M.	W12	W6	D2	L1	L3	W9	$3\frac{1}{2}-2\frac{1}{2}$	
6. Llata R.	W10	L5	W7	W8	L4	L2	3 - 3	12
7. Maeder K.	W14	L4	L6	W12*	W11	L3	3 - 3	8
8. Snow R.	W11	L2	L1	L6	W14*	W12	3 - 3	8
9. Kalivoda J.	L2	L11	W15*	W16*	W10	L5	3 - 3	7
10. Schuster J.	L6	L12	W14	W13	L9	W11	3 - 3	7
11. Stolpe J.	L8	W9	W12	L4	L7	L10	2 - 4	7
12. Leeds A.	L5	W10	L11	L7*	W13*	L8	2 - 4	6
13. Young H.	L4	W14	L16*	L10	L12*	--	1 - 5	2
14. Langer G.	L7	L13	L10	W By	L8	--	1 - 5	1
15. Dorn A.	D1	L3*	L9*	--	--	--	$\frac{1}{2}-5\frac{1}{2}$	3 1/4
16. Taylor R.	D3	L1	L13*	L9*	--	--	$\frac{1}{2}-5\frac{1}{2}$	2 3/4

* Forfeit

SOUTHERN CALIFORNIA CHAMPIONSHIP QUALIFYING TOURNAMENTS

This championship tournament is not an open, having seeded players based on previous records and entrants qualified from club tournaments. The first three qualifying sections to be reported in full:

CITY TERRACE SECTION

	1	2	3	4	5	6	Score	Tie-Br.
1. Frilling Fred	W8	W5	W2	W6*	W7	L3	5 - 1	$12\frac{1}{2}$
2. Amneus D.	W10	W4	L1	W5	W6*	W7	5 - 1	$12\frac{1}{2}$
3. Pease R.	D4	W8	L6	D7	W10	W1	4 - 2	$11\frac{1}{2}$
4. Frilling Frank	D3	L2	W9	W8	D5	W10	4 - 2	10

City Terrace Section	1	2	5	4	5	6	Score	Tie-br.
5. Berres R.	W11	L1	W7	L2	D4	- -	2½-3½	12½
6. Kovac J.	D7	W9	W3	L1*	L2*	- -	2½-3½	10½
7. Freed J.	D6	W10	L5	D3	L1	L2	2 - 4	
8. Atwood R.	L1	L3	W10	L4	D9	- -	1½-4½	12
9. Freed H.	- -	L6	L4	L10	D8	Bye	1½-4½	6½
10. Glassberg S.	L2	L7	L8	W9	L3	L4	1 - 5	
11. Collins S.	L5	- -	- -	- -	- -	- -	0 - 6	

* Forfeit

DOWNEY SECTION

	1	2	3	4	5	6	Score	
1. Goddard H.	W4	W3	D2	W11	W7	W5	5½ - ½	
2. Anderson S.	W10	W12	D1	W7	W3	D4	5 - 1	
3. Cone R.	W5	L1	W4	D9	L2	W7	3½-2½	
4. Owen J.	L1	W5	L3	W8	W11	D2	3½-2½	
5. Metzger W.	L3	L4	W10	W6	W9	L1	3 - 3	
6. Jeans C.	L9	W10	L8	L5	W12	W9	3 - 3	
7. Postma J.	W8	D9	W12	L2	L1	L3	2½-3½	
8. Stewart R.	L7	L11	W6	L4	W10	D12	2½-3½	
9. Young D.	W6	D7	L11	D3	L5	L6	2 - 4	
10. Caballero A.	L2	L6	L5	W12	L8	W11	2 - 4	
11. Murphy M.	L12	W8	W9	L1	L4	L10	2 - 4	
12. Stremel J.	W11	L2	L7	L10	L6	D8	1½-4½	

PASADENA SECTION

	1	2	3	4	5	6	Score	Tie-br.
1. Syvertsen R.	W4	W6	W3	W7	L2	W5	5 - 1	
2. Kotz R.	D7	W10	D8	W3	W1	L4	4 - 2	12
3. Brow Dr.	W9	W8	L1	L2	W5	W6	4 - 2	10½
4. Carpenter A.	L1	W9	L5	W10	W7	W2	4 - 2	10½
5. Gaylor E.	L8	D7	W4	W9	L3	L1	2½-3½	12
6. Hatch A.	W10	L1	L7	D8	W9	L3	2½-3½	10
7. Rader H.	D2	D5	W6	L1	L4	L10	2 - 4	12½
8. Irwin W.	W5	L3	D2	D6	L10	L9	2 - 4	11
9. Smith W.	L3	L4	W10	L5	L6	W8	2 - 4	11
10. Oganosov Y.	L6	L2	L9	L4	W8	W7	2 - 4	10½

Other qualifying sections to be reported without crossables: W. Alza at the Steiner Section; R. Laver at Van Nuys; Paul Quillen at Santa Monica.

GAME OF THE MONTH

The following drawn game from the Bernard Oak Memorial Open is an "iceberg" game -- 5/6ths under the surface. The players cannot be criticized for taking a draw -- it is only a pity that there was not more time to continue from the diagrammed position.

Game No. 715 Sicilian

White Black
S. Rains S. Parker

1. P-K4 P-QB4
2. Kt-KB3 Kt-KB3
3. P-K5 Kt-Q4
4. Kt-B3 P-K3
5. P-Q4 Kt-QB3

A well-analyzed gambit.

6. Kt x Kt PxKt
7. PxP BxP
8. QxP Q-Kt3
9. B-QB4 ...

As played by Tal. Actually there is little choice, for 9. Q-Q2, 0-0; 10. B-Q3, KtxP is obviously too much for white. Now a crisis is reached.

9. ... BxPch
10. K-K2 0-0
11. Kt-Kt5 ...

Correct is R-B1 first.

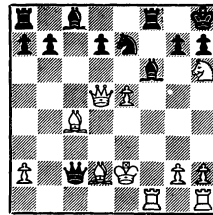
11. ... B-R5

And now Black could win with a flourish after 11... , P-Q3! (12. KtxBP, B-K3!)

12. B-K3 QxP
13. KtxBP QxPch
14. B-Q2 Kt-K2
15. Kt-R6ch K-R1
16. QR-KB1 B-B3

Everything is forced. Black cannot play R-K1 because of Q-Kt8ch and

smothered mate.



17. Kt-B7ch K-Kt1
18. Kt-R6ch.

Here a draw by perpetual check was agreed to. Actually, White might try 17. B-Q3, (KtxQ; 18. BxQ and the 2 Bishops are powerful), or the (speculative) 17. Q-B7?! RxQ; 18. KtxRch, K-Kt1; 19. Kt-R6ch, K-R1; 20. B-Q3, Q-B3; 21. PxB etc., with a lot of chances -- and, on the other hand, a lot of checks to be weathered by the Black Queen both here and at move 17. Probably much too risky for a tournament game.

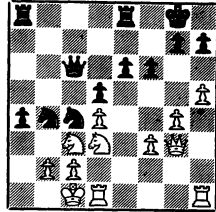
Two games by one of Sacramento's newer players.

CALIF. CENTRAL VALLEY OPEN

Game No. 716 Center Counter
White Black
W. Haines S. VonOettingen

- | | | |
|-----|---------------|---------|
| 1. | P-K4 | P-Q4 |
| 2. | PxP | Kt-KB3 |
| 3. | B-Kt5 ch | B-Q2 |
| 4. | B-B4 | P-B3!? |
| 5. | Kt-QB3? | B-Kt5 |
| 6. | KKt-K2 | PxP |
| 7. | B-Kt5 ch | Kt-B3 |
| 8. | P-Q4 | P-K3 |
| 9. | P-B3 | B-KB4 |
| 10. | B-K3 | B-Q3 |
| 11. | Q-Q2 | 0-0 |
| 12. | 0-0-0 | Kt-QKt5 |
| 13. | B-R4 | P-QKt4! |
| 14. | B-Kt3 | P-QR4 |
| 15. | P-QR4 | PxP |
| 16. | BxP | Kt-Q2 |
| 17. | P-Kt4 | B-Kt3 |
| 18. | P-R4 | P-B3 |
| 19. | P-R5 | B-K1 |
| 20. | B-B4 | Kt-Kt3 |
| 21. | B(R4)xB | Kt-B3 |
| 22. | Q-K1 | RxB |
| 23. | BxB | QxB |
| 24. | Q-Kt3 | Q-B3 |
| 25. | Kt-B4 | P-R5 |
| 26. | Kt-Q3 | ... |
| | (See Diagram) | |
| 26. | ... | P-R6! |
| 27. | PxP | RxP |
| 28. | KtxKt | Q-R5! |
| 29. | Resigns. | |

Position
after 26.
Kt-Q3:

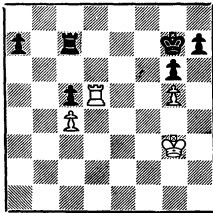


SACRAMENTO - SAN JOSE

Game No. 717 Irregular
White Black
S. VonOettingen E. Osburn

- | | | |
|-----|--------|--------|
| 1. | O-KB1 | P-Q4 |
| 2. | Kt-KB3 | Kt-KB3 |
| 3. | P-K3 | P-KKt3 |
| 4. | P-QKt3 | B-Kt2 |
| 5. | B-Kt2 | 0-0 |
| 6. | B-K2 | P-B4 |
| 7. | 0-0 | Kt-B3 |
| 8. | K-R1 | P-Kt3 |
| 9. | Kt-K5 | B-Kt2 |
| 10. | KtxKt | BxKt |
| 11. | P-Q3 | Kt-K1 |
| 12. | BxB | KtxB |
| 13. | B-B3 | Q-B2 |
| 14. | Q-K1 | QR-Q1 |
| 15. | Kt-Q2 | Kt-B4 |
| 16. | P-KKt4 | Kt-Q3 |
| 17. | Q-R4 | P-B4 |
| 18. | P-Kt5 | Kt-B2 |
| 19. | Q-Kt3 | P-K4 |
| 20. | PxP | QxP |
| 21. | QxQ | KtxQ |

22. P-Q4 Kt-B2
 23. P-KR4 KR-K1
 24. KR-K1 Kt-Q3
 25. P-B3 R-K2
 26. K-Kt2 R(Q)-K1
 27. K-B2 B-Kt2
 28. QR-B1 K-B2
 29. P-B4 PxBP
 30. BxB RxB
 31. KtPxP Kt-K5 ch
 32. KtxKt RxB
 33. PxP PxP
 34. R(K)-Q1 RxB
 35. R-Q5 R-B2
 36. R(B)-Q1 R-R7 ch
 37. K-B3 K-K3
 38. P-K4! PxP
 39. KxP R-K7ch
 40. K-B4 R-KB7 ch
 41. K-Kt3 RxB
 42. R-K ch K-B2
 43. R-KR1 K-Kt1
 44. R-Q8 ch K-Kt2
 45. R(R)-Q1 R-K7
 46. R(B)-Q7ch R-K2
 47. RxR(K7)ch RxB
 48. R-Q5 R-B2



49. K-B4 P-QR4
 50. K-K5 P-R5

51. K-Q6 R-B1
 52. R-K5 R-QR1
 53. R-K7 ch K-Kt1
 54. KxP P-R6
 55. R-K1 P-R7
 56. R-QR1 K-B2
 57. K-Kt6 K-K3
 58. P-B5 K-Q4
 59. P-B6 R-R5
 60. P-B7 R-Kt5 ch
 61. K-R7 R-R5 ch
 62. K-Kt7 R-Kt5 ch
 63. K-B8 K-K3
 64. RxP Resigns.

VAN NUYS 2 VS. STEINER AGame No. 718QGD

White

Black

R. Myhro

T. Weinberger

1. P-Q4 P-Q4
 2. P-QB4 P-K3
 3. Kt-QB3 Kt-KB3
 4. PxP PxP
 5. B-Kt5 B-K2
 6. P-K3 0-0
 7. Q-B2 R-K1
 8. B-Q3 QKt-Q2
 9. Kt-B3 P-B3
 10. 0-0 Kt-B1
 11. QR-Kt1 Kt-K5
 13. BxB QxB
 14. Kt-Q2 B-B4
 15. P-QKt4 Kt-Kt3
 16. KR-B1 QR-Q1
 17. P-Kt5 R-Q3
 18. Kt-B4 Kt-R5
 19. KtxR QxKt
 20. Kt-K2 B-Q2

21. P-Kt6	Q-Kt3	23. P-B3	B-R6
22. Kt-Kt3	P-QR3	24. Kt-Q5	K-Kt2
23. Q-B5	B-Kt5	25. Q-Kt5	R-K3
24. P-Q5	PxP	26. Kt-B4	Q-B1
25. QxP	P-KR4	27. KtxR ch	QxKt
26. QxKtP	KtxP	28. Q-Q8	Resigns.
27. Q-B6	R-K3		
28. QxR	BxQ	<u>Game No. 720</u>	<u>Giuoco Piano</u>
29. P-Kt7	Kt-R5	White	Black
30. P-Kt8(Q)ch	Resigns.	S. Almgren	K. Stani

HERMAN STEINER MEMORIAL

Game No. 719 Irregular
 White Black
 R. Jacobs D. Conwit

1. Kt-QB3	P-QB4
2. P-K4	Kt-QB3
3. P-QKt3	P-KKt3
4. B-Kt2	B-Kt2
5. P-B4	P-K4
6. PxP	KtxP
7. Kt-B3	P-Q3
8. B-Kt5 ch	B-Q2
9. 0-0	Kt-R3
10. BxB ch	QxB
11. R-Kt1	0-0
12. Kt-Q5	P-B3
13. P-Q4	PxP
14. KtxQP	QR-K1
15. Q-Q2	P-B4
16. PxP	KtxP
17. KtxKt	RxKt
18. RxR	QxR
19. R-KB1	Q-R4
20. Kt-B4	Kt-B6 ch
21. RxKt	Q-B4 ch
22. K-B1	BxB

1. P-K4	P-K4
2. Kt-KB3	Kt-QB3
3. B-B4	B-B4
4. P-B3	P-Q3
5. P-Q4	PxP
6. PxP	B-Kt5ch
7. Kt-B3	Kt-B3
8. 0-0	0-0
9. B-KKt5	B-Kt5
10. Kt-Q5	R-K1
11. Q-B1	RxP
12. BxKt	PxB
13. Q-R6	R-K3
14. Kt-K3	BxKt
15. BxR	B-K5
16. B-B5	BxB
17. KtxB	Q-KB1
18. QxBP	B-Q7
19. P-B4	P-KR4
20. R-B3	K-R2
21. R-KKt3	BxP
22. R-Kt7ch	Resigns.

From a recent simultaneous at
Santa Monica.

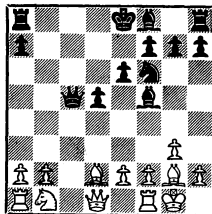
Game No. 721 Nimzo-Indian Defense

	White	Black
	A. Saidy	A. Sacks
1.	P-Q4	Kt-KB3
2.	P-QB4	P-K3
3.	Kt-QB3	B-Kt5
4.	P-K3	P-B4
5.	Kt-K2	0-0
6.	P-QR3	BxKtch
7.	KtxB	P-QKt3
8.	P-Q5	P-Q3
9.	B-Q3	B-Kt2
10.	0-0	P-KR3
11.	PxP	PxP
12.	P-K4	Kt-B3
13.	P-B4	Q-K2
14.	B-K3	QR-Q1
15.	P-R3	P-Q4
16.	P-K5	PxP
17.	PxKt	QxP
18.	B-R7 ch	KxB
19.	Q-R4	Q-Kt3
20.	R-B2	R-Q6
21.	R-K1	Kt-K4
22.	K-R2	BxP
23.	R-KKt1	RxB
24.	R(2)xB	RxP ch
25.	KxR	Q-B4ch
26.	K-Kt3	QxPch
27.	K-R3	Q-B4ch
28.	K-R2	Q-R4ch
29.	K-Kt3	R-B6 Mate.

SO. CALIF. AMATEUR OPEN

Game No. 722 Queen's Pawn

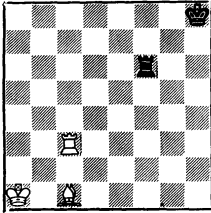
	White	Black
	W. Alza	R. Larsen
1.	Kt-KB3	P-Q4
2.	P-KKt3	P-QB4
3.	B-Kt2	Kt-QB3
4.	P-Q4	Kt-B3
5.	0-0	B-Kt5
6.	Kt-K5	B-B4
7.	KtxKt	PxKt
8.	PxP	Q-R4
9.	P-QB4	P-K3
10.	PxP	BPxP
11.	B-Q2	QxBP



12.	Q-R4ch	Kt-Q2
13.	R-B1	Q-Kt3
14.	B-R5	QxP
15.	Kt-Q2	R-Kt1
16.	P-K4	BxP
17.	BxB	PxB
18.	R-Kt1	Q-K4
19.	RxR	QxR
20.	R-B7	Q-Q1
21.	RxP	Q-B1
22.	B-B7	K-K2
23.	KtxP	Kt-B3
24.	B-Q6ch	K-Q1
25.	R-R8 and wins.	

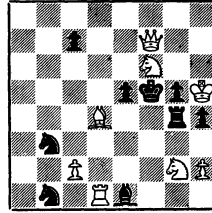
TASKS: Russia has announced an international competition among 21 invited nations for the problem composing "championships" of the world, under auspices of FIDE. There are sections for every type of problem: from 2-movers to "fairy" chess. The positions are examples of

TASK No. 198



White to Play & Win.

TASK No. 199



White to mate in 3.

some of the specified themes. Two more examples will be shown next time, with full details concerning entrance into the "tournament". It is hoped that California problemists will be able to represent the U. S. in at least some of the sections.

Solutions: Next Issue