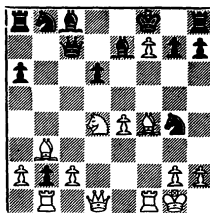


THE CALIFORNIA CHESS REPORTER

VOL. XIV NO. 3

Fischer-Blackstone
after 15. R-K1
(See Games)



FROM: 244 Kearny Street
San Francisco 94108

TO:

David Lawson
111 Montague St.
Brooklyn 2, N. Y.

THE CALIFORNIA CHESS REPORTER

Vol. XIV. No. 3

\$2 per year

November, 1964

THE CALIFORNIA CHESS REPORTER, 244 Kearny Street, San Francisco 8
Monthly except January, March, August, and October
Official Organ of the California State Chess Federation

Editor: Guthrie McClain

Associate Editors: Gordon S. Barrett, Los Angeles; Dr. Mark W. Eudey, Berkeley;
Neil T. Austin, Sacramento; Irving Rivise, Los Angeles

Games Editor: Robert E. Burger

Guest Annotator: Intl. Master Imre Konig

Second-class postage paid at San Francisco, California

CONTENTS

Pacific and Southwest Open	34-35	San Bernardino Summer Tmt.	40
Southern California Amateur	36-37	Whittier Club Championship	41
San Gabriel Valley Open	38	Game of the Month	41-42
Riverside Open	39-40	Games	43-47
Riverside Vernal Tournament	40	Tasks	48

WEINBERGER PACIFIC S. W., McREYNOLDS SO. CAL. AMATEUR WINNERS

The biggest tournaments of the Fall were the third annual Pacific and Southwest Open with 70 players and the Southern California Amateur with 71. Both tournaments offered a \$300 first prize, and both were sponsored by the Santa Monica Bay Chess Club and were directed by Herbert T. Abel.

In the Pacific, Tibor Weinberger beat out a strong field to head off by half a point four players tied for second; Larry Evans, Michael Robinson, Irving Rivise and John Blackstone. Weinberger scored $5\frac{1}{2}-\frac{1}{2}$, his only draw being against Robinson.

In the Amateur, Frank McReynolds scored a fine 6-0 to beat out four players with 5-1 scores. The field in the Amateur is restricted to players with ratings of less than 2,000 points, but this does not mean that the players are amateurs!

WEINBERGER WINS PACIFIC AND SOUTHWEST OPEN

Tibor Weinberger won the third annual Pacific and Southwest Open by a narrow margin over Larry Evans (grandmaster), Michael Robinson, Irving Rivise and John Blackstone. After the last round, the decision hung in the balance until a fifth-round adjourned game Quillen-Weinberger was completed. Quillen tried too hard to win, so Weinberger took home the \$300 first prize. The tournament was held at Joslyn Hall in Santa Monica and was directed by Herbert T. Abel.

<u>PACIFIC AND SOUTHWEST OPEN, SANTA MONICA, AUGUST 1-3, 1964</u>							
	<u>1</u>	<u>2</u>	<u>3</u>	<u>4</u>	<u>5</u>	<u>6</u>	<u>Score</u>
1. T. Weinberger	W67	D3	W25	W35	W7	W14	5½ - ½
2. L. Evans	W56	W21	D23	W19	W17	D4	5 - 1
3. M. Robinson	W47	D1	W6	W15	D29	W11	5 - 1
4. I. Rivise	W45	W53	W31	D7	W23	D2	5 - 1
5. J. Blackstone	L53	W60	W36	W55	W35	W17	5 - 1
6. J. Lazos	W33	D25	L3	W16	W21	W23	4½ - 1½
7. P. Quillen	W57	W29	W58	D4	L1	W12	4½ - 1½
8. R. Gross	W50	W55	D15	L23	W25	W28	4½ - 1½
9. R. Hoppe	W42	W13	L35	W48	D28	W29	4½ - 1½
10. Dr. F. Gamboa	L28	L45	W57	W51	W60	W30	4 - 2
11. C. Henin	W43	L35	W65	W20	W30	L3	4 - 2
12. R. Jacobs	W65	W14	L17	W31	W38	L7	4 - 2
13. T. Jester	W61	L9	W66	L40	W46	W38	4 - 2
14. E. Kennedy	W69	L12	W53	W24	W40	L1	4 - 2
15. N. Lessing	W51	W28	D8	L3	W49	D19	4 - 2
16. D. Parmiare	W34	L17	W27	L6	W37	W35	4 - 2
17. C. Pilnick	W62	W16	W12	W30	L2	L5	4 - 2
18. S. Rubin	L24	W46	L20	W47	W32	W40	4 - 2
19. P. Smith	W44	D22	W63	L2	W45	D15	4 - 2
20. J. Anderson	L27	W43	W18	L11	W56*	L31	3½ - 2½
21. D. Conwit	W52	L2	D45	W22	L6	W43	3½ - 2½
22. C. Gean	W49	D19	L29	L21	W44	W42	3½ - 2½
23. J. Hanken	W59	W27	D2	W8	L4	L6	3½ - 2½
24. L. Kupersmith	W18	L30	W56	L14	W48	D27	3½ - 2½
25. R. Larsen	W41	D6	L1	W54	L8	W49	3½ - 2½
26. W. Maillard	W70	L58	W59	L38	D43	W45	3½ - 2½
27. M. Morris	W20	L23	L16	W59	W55	D24	3½ - 2½
28. R. Seltzer	W10	L15	W47	W58*	D9	L8	3½ - 2½
29. R. Walker	W36	L7	W22	W32	D3	L9	3½ - 2½

THE CALIFORNIA CHESS REPORTER

35

30. S. Almgren	W32	W24	W40	L17	L11	L10	3 - 3
31. R. Bliss	W54	W37	L4	L12	W53	W20	3 - 3
32. R. Fontenrose	L30	W39	W34	L29	L18	W53	3 - 3
33. G. Gross	L6	L63	L54	W41	W61	W50	3 - 3
34. B. Lainson	L16	W57	L32	L53	W51	W46	3 - 3
35. M. Leidner	W64	W11	W9	L1	L5	L16	3 - 3
36. G. McMahon	L29	W70	L5	L46	W52	W47	3 - 3
37. S. Salter	W66	L31	L55	W39	L16	W57	3 - 3
38. A. Spiller	W48	L40	W51	W26	L12	L13	3 - 3
39. D. Walker	L58	L32	W52	L37	W69	W54	3 - 3
40. S. Wanetick	W68	W38	L30	W13	L14	L18	3 - 3
41. E. Clarke	L25	L51	D42	L33	W64	W62	2½-3½
42. B. Collins	L9	D61	D41	D67	W63*	L22	2½-3½
43. V. Fagin	L11	L20	W70*	W65	D26	L21	2½-3½
44. N. Nicholson	L19	L48	D67	W69	L22	W61	2½-3½
45. P. Rhee	L4	W10	D21	W60	L19	L26	2½-3½
46. F. Brock	L55	L18	W64	W36	L13	L34	2 - 4
47. R. Clark	L3	W67	L28	L18	W68*	L36	2 - 4
48. A. Gilbert	L38	W44	W61	L9	L24	- -	2 - 4
49. D. Gollub	L22	D50	W62	W63	L15	L25	2 - 4
50. M. Goodall	L8	D49	L60	W68	D54	L33	2 - 4
51. L. Harter	L15	W41	L38	L10	L34	W66	2 - 4
52. A. Jiron	L21	L56	L39	W64	L36	W65	2 - 4
53. D. Littrell	W5	L4	L14	W34	L31	L32	2 - 4
54. P. McCarthy	L31	D62	W33	L25	D50	L39	2 - 4
55. G. Olson	W46	L8	W37	L5	L27	W60	2 - 4
56. A. Pollard	L2	W52	L24	W66	L20	- -	2 - 4
57. H. Rader	L7	L34	L10	W70*	W65	L37	2 - 4
58. L. Simon	W39	W26	L7	L28	- -	- -	2 - 4
59. W. Teal	L23	W64	L26	L27	W67*	- -	2 - 4
60. T. Bullockus	D63	L5	W50	L45	L10	L55	1½-4½
61. H. Cillers	L13	D42	L48	W62	L33	L44	1½-4½
62. D. Leslie	L17	D54	L49	L61	W66	L41	1½-4½
63. P. Perrillo	D60	W33	L19	L49	L42	- -	1½-4½
64. R. Engler	L35	L59	L46	L52	D41	W69	1 - 5
65. C. Haley	L12	W69	L11	L43	L57	L52	1 - 5
66. W. Hall	L37	W68	L13	L56	L62	L51	1 - 5
67. F. Metz	L1	L47	D44	D42	L59*	- -	1 - 5
68. M. Cox	L40	L66	D69	L50	L47*	- -	½ - 5½
69. Vordershasse	L14	L65	D68	L44	L39	L64	½ - 5½
70. Losasso	L26	L36	L43*	L57*	- -	- -	0 - 6

McREYNOLDS WINS SOUTHERN CALIFORNIA AMATEUR CHAMPIONSHIP

Frank McReynolds of Santa Monica won the annual tournament for Southern Californians with ratings of less than 2000 points by the perfect score of 6-0. This great tournament with its \$300 first prize was sponsored by the Santa Monica Bay Chess Club and was directed by Herbert T. Abel.

SOUTHERN CALIFORNIA AMATEUR CHAMPIONSHIP, Oct. 30-Nov. 1, 1964

	1	2	3	4	5	6	Score
1. F. McReynolds	W54	W14	W56	W17	W10	W8	6 - 0
2. Parniani	W59	W38	W3	D9	D8	W17	5 - 1
3. Jester	W50	W36	L2	W34	W14	W9	5 - 1
4. Ferraz	L16	W50	W43	W20	W24	W15	5 - 1
5. K. Stani	W58	W44	W29	L10	W37	W16	5 - 1
6. Carr	L18	W71*	W34	W27	W29	D10	4½-1½
7. Condon	D12	W64*	L23	W38	W39	W21	4½-1½
8. Falkowitz	W55	W39	W41	W24	D2	L1	4½-1½
9. S. Parker	W42	W45	W13	D2	W23	L3	4½-1½
10. Scheib	W15	W43	W30	W5	L1	D6	4½-1½
11. Amneus	L19	W49	W59	W22	L15	W37	4 - 2
12. Boye	D7	W62	W21	L23	W40*	D19	4 - 2
13. Eglitis	W Bye	W63	L9	L25	W26	W41	4 - 2
14. Fagin	W40	L1	W27	W47	L3	W31	4 - 2
15. Gardos	L10	W53	W38	W29	W11	L4	4 - 2
16. Geller	W4	W22	L17	W26	W30	L5	4 - 2
17. Goldberg	W51	W18	W16	L1	W25	L2	4 - 2
18. Leiber	W6	L17	D39	D42	W46*	W35	4 - 2
19. Peach	W11	W34	L24	D41	W36	D12	4 - 2
20. Rubin	L39	W58	W35	L4	W32	W23*	4 - 2
21. Clark	W32	D23	L12	W54	W41	L7	3½-2½
22. Littrell	W68	L16	W63	L11	W44*	D24	3½-2½
23. Pollard	W57	D21	W7	W12	L9	L20*	3½-2½
24. H. Rogosin	W66	W60	W19	L8	L4	D22	3½-2½
25. Dr. T. Bullockus	L45	W52	W57	W13	L17	- -	3 - 3
26. Dieter	L44	W51	W60	L16	L13	W48*	3 - 3
27. Gedgaudas	W69	L41	L14	L6	W50*	W45	3 - 3
28. Harter	W63	D42	L37	L7	W54	D36	3 - 3
29. Heisler	W70	W31	L5	L15	L6	W53	3 - 3
30. Henderson	W65	W61	L10	W44	L16	- -	3 - 3
31. Hernandez	W35	L29	W46	L37	W42	L14	3 - 3

So. Calif. Amateur	1	2	3	4	5	6	Score
32. Hollbrook	L21	L46	W66*	W49	L20	W51	3 - 3
33. Kleszczewski	L61	W65	L44	W55	L34	W39	3 - 3
34. Kretten	W48	L19	L6	L3	W33	W42	3 - 3
35. Nemes	L31	W67	L20	W48	W51	L18	3 - 3
36. Salter	W53	L3	W61	D40	L19	D28	3 - 3
37. Stewart	L47	W55	W28	W31	L5	L11	3 - 3
38. Cromie	W71	L2	L15	W45	- -	D55	2½-3½
39. Fotias	W20	L8	D18	W60*	L7	L33	2½-3½
40. Kerllenevich	L14	W66	W45	D36	L12*	- -	2½-3½
41. Stumbrs	W52	W27	L8	D19	L21	L13	2½-3½
42. Cherestes	L9	D28	W62	D18	L31	L34	2 - 4
43. Gates	W49	L10	L4	W61	- -	- -	2 - 4
44. Gean	W26	L5	W33	L30	L22*	- -	2 - 4
45. Jiron	W25	L9	L40	L38	W49*	L27	2 - 4
46. Kellotat	L60	W32	L31	W57	L18*	- -	2 - 4
47. Kempner	W37	D56	D54	L14	- -	- -	2 - 4
48. Kronen	L34	L54*	W53	L35	W Bye	L26*	2 - 4
49. Larson	L43	L11	W50	L32	L45*	W63	2 - 4
50. Pease	L3	L4	L49	W63	L27*	W54	2 - 4
51. Vale	L17	L26	W65*	W56*	L35	L32	2 - 4
52. Weltz	L41	L25	W70	W59	- -	- -	2 - 4
53. Ito	L36	L15	L48	W Bye	D63	L29	1½-4½
54. Olsson	L1	W48*	D47	L21	L28	L50	1½-4½
55. Schaumburger	L8	L37	W58	L33	- -	D38	1½-4½
56. Zacks	W67	D47	L1	L51*	- -	- -	1½-4½
57. Carroll	L23	W68*	L25	L46	- -	- -	1 - 5
58. Kellner	L5	L20	L55	W62*	- -	- -	1 - 5
59. Maeda	L2	W70	L11	L52	- -	- -	1 - 5
60. Yeates	W46	L24	L26	L39*	- -	- -	1 - 5
61. Young	W33	L30	L36	L43	- -	- -	1 - 5
62. Heffernan	D64	L12	L42	L58*	- -	- -	½-5½
63. P. McCarthy	L28	L13	L22	L50	D53	L49	½--5½
64. Ildschultz	D62	L7*	- -	- -	- -	- -	½--5½
65. Baum	L30	L33	L51	- -	- -	- -	0 - 6
66. Eaton	L24	L40	L32	- -	- -	- -	0 - 6
67. Fries	L56	L35	- -	- -	- -	- -	0 - 6
68. D. Gollub	L22	L57*	- -	- -	- -	- -	0 - 6
69. Hufnagel	L27	- -	- -	- -	- -	- -	0 - 6
70. Loeblein	L29	L59	L52	- -	- -	- -	0 - 6
71. Norton	L38	L6*	- -	- -	- -	- -	0 - 6

ADAMS IS SAN GABRIEL VALLEY OPEN CHAMPION

E. B. Adams of Pasadena, 86, gave the youngsters a lesson in the 17th playing of the San Gabriel Valley Open, played in Pasadena in October and November. Adams gave up only one draw, to runner-up Ben Kakimi of City Terrace, as he scored $5\frac{1}{2}-\frac{1}{2}$.

SAN GABRIEL VALLEY OPEN, OCTOBER-NOVEMBER, 1964

	1	2	3	4	5	6	Score
1. E. Adams	W11	W15	W21	W5	D2	W6	$5\frac{1}{2}-\frac{1}{2}$
2. B. Kakimi	D19	W20	W18	W21	D1	W8	5 - 1
3. A. Carpenter	W16	D10	W13	L4	W22	W14	$4\frac{1}{2}-1\frac{1}{2}$
4. A. Larsen	D20	W7	W10	W3	L8	D5	4 - 2
5. A. Ferras	W22	W14	W6	L1	D13	D4	4 - 2
6. Dr. M. Sarley	W23	W27	L5	W11	W7	L1	4 - 2
7. M. Carr	W26	L4	W16	W19	L6	W15	4 - 2
8. Frank Frilling	L13	W23	W27	W14	W4	L2	4 - 2
9. J. Tuggle	L18	D19	W20	D15	W16	W13	4 - 2
10. W. Shatford	W12	D3	L4	L13	W19	W18	$3\frac{1}{2}-2\frac{1}{2}$
11. W. Boyko	L1	W30	W23	L6	D18	W20	$3\frac{1}{2}-2\frac{1}{2}$
12. S. Parker	L10	W25	L14	D28	W27	W22	$3\frac{1}{2}-2\frac{1}{2}$
13. R. Cohan	W8	D18	L3	W10	D5	L9	3 - 3
14. E. Nilsson	W28	L5	W12	L8	W21	L3	3 - 3
15. D. Young	W29	L1	D22	D9	W25	L7	3 - 3
16. R. Patton	L3	W28	L7	W26	L9	W24	3 - 3
17. C. Brown	L24	L26*	L28*	W29	W23	W25	3 - 3
18. J. Porth	W9	D13	L2	D27	D11	L10	$2\frac{1}{2}-3\frac{1}{2}$
19. I. Besen	D2	D9	W26	L7	L10	D21	$2\frac{1}{2}-3\frac{1}{2}$
20. Dr. R. Wilson	D4	L2	L9	W30	W28	L11	$2\frac{1}{2}-3\frac{1}{2}$
21. M. Neuss	W25	W24	L1	L2	L14	D19	$2\frac{1}{2}-3\frac{1}{2}$
22. S. Katona	L5	W29	D15	W23	L3	L12	$2\frac{1}{2}-3\frac{1}{2}$
23. T. Mishler	L6	L8	W29	L22	L17	W28	2 - 4
24. C. Chrones	W17	L21	L11	L25	W26	L16	2 - 4
25. R. Kotz	L21	L12	W30	W24	L15	L17	2 - 4
26. R. Serra	L7	W17*	L19	L16	L24	W29	2 - 4
27. C. Swett	W30	L6	L8	D18	L12	- -	$1\frac{1}{2}-4\frac{1}{2}$
28. Fred Frilling	L14	L16	W17*	D12	L20	L23	$1\frac{1}{2}-4\frac{1}{2}$
29. P. Orem	L15	L22	L23	L17	W30*	L26	1 - 5
30. A. Holmes	L27	L11	L25	L20*	L29*	- -	0 - 6

* Forfeit

JACOBS TAKES RIVERSIDE OPEN CHAMPIONSHIP

Bob Jacobs added another title to his collection when he won the Riverside Open in November, his $5\frac{1}{2}-\frac{1}{2}$ score entitling him to the \$125 first prize. Leslie Simon was a close second, as he was defeated in the last round by Jacobs after having won five straight games. Tied with Simon but behind in tie-breaking points were Delaney and Wicher.

RIVERSIDE OPEN, NOVEMBER 14-15, 1964							
	1	2	3	4	5	6	Score
1. R. Jacobs	W25	W18	D13	W29	W7	W2	$5\frac{1}{2}-\frac{1}{2}$
2. L. Simon	W12	W19	W14	W9	W13	L1	5 - 1
3. T. Delaney	W16	W23	W13	L13	W19	W8	5 - 1
4. E. Wicher	L22	W33	W12	W23	W6	W5	5 - 1
5. E. Villasenor	W24	W11	L3	W10	W9	L4	4 - 2
6. V. Fagin	W32	L15	W20	W17	L4	W24	4 - 2
7. J. Zizda	L36	W26	W16	W14	L1	W18	4 - 2
8. D. Cotten	W26	L14	W25	W22	W15	L3	4 - 2
9. C. Walker	W33	W22	W35	L2	L5	W14	4 - 2
10. D. Walker	L14	W30	W31	L5	W22	W13	4 - 2
11. C. Joyce	W30	L5	L22	W33	W28	W19	4 - 2
12. N. Zacks	L2	W38	L4	W26	D17	W23	$3\frac{1}{2}-2\frac{1}{2}$
13. Dr. F. Gamboa	W31	W36	D1	W3	L2	L10	$3\frac{1}{2}-2\frac{1}{2}$
14. A. Almeida	W10	W8	L2	L7	W25	L9	3 - 3
15. R. Edberg	D20	W6	L29	W24	L8	D17	3 - 3
16. A. Jiron	L3	W21	L7	W27	L18	W37	3 - 3
17. Dr. A. Romero	L23	W28	W18	L6	D12	D15	3 - 3
18. L. Noel	W38	L1	L17	W31	W16	L7	3 - 3
19. Dr. M. Schlosser	W37	L2	W36	W35*	L3	L11	3 - 3
20. R. Myers	D15	D27	L6	W21	D23	D26	3 - 3
21. S. Skrypzak	D27	L16	D24	L20	W36	W32	3 - 3
22. H. Rader	W4	L9	W11	L8	L10	D25	$2\frac{1}{2}-3\frac{1}{2}$
23. D. Reeb	W17	L3	W27	L4	D20	L12	$2\frac{1}{2}-3\frac{1}{2}$
24. W. Teal	L5	W37	D21	L15	W30	L6	$2\frac{1}{2}-3\frac{1}{2}$
25. A. Wicher	L1	W32	L8	W30	L14	D22	$2\frac{1}{2}-3\frac{1}{2}$
26. Dr. A. Hendy	L8	L7	W38	L12	W37	D20	$2\frac{1}{2}-3\frac{1}{2}$
27. G. Herlick	D21	D20	L23	L16	W31	D28	$2\frac{1}{2}-3\frac{1}{2}$
28. W. Giles	L29	L17	W32	W36	L11	D27	$2\frac{1}{2}-3\frac{1}{2}$
29. C. Henin	W28	D35	W15	L1	- -	- -	$2\frac{1}{2}-3\frac{1}{2}$
30. Miss G. Olsson	L11	L10	W34	L25	L24	W38	2 - 4

Riverside Open	1	2	3	4	5	6	Score
31. D. Choate	L13	W34	L10	L18	L27	W36	2 - 4
32. J. Renck	L6	L25	L28	W38	W33	L21	2 - 4
33. F. Brock	L9	L4	W37	L11	L32	D34	1½-4½
34. L. Rankin	L35	L31	L30	L37	W38	D33	1½-4½
35. F. Boschan	W34	D29	L9	L19*	- -	- -	1½-4½
36. C. Ramsey	W7	L13	L19	L28	L21	L31	1 - 5
37. H. Katz	L19	L24	L33	W34	L26	L16	1 - 5
38. L. Niemi	L18	L12	L26	L32	L34	L30	0 - 6

DELANEY WINS RIVERSIDE AND SAN BERNARDINO SUMMER TOURN.

Tim Delaney won two summer tournaments at Riverside and San Bernardino by identical 3½-½ scores:

RIVERSIDE VERNAL TOURNAMENT, SUMMER 1964

	1	2	3	4	Score
1. Delaney, T.	W8	W4	W2	D3	3½ - ½
2. D. Cotten	W7	W8	L1	W5	3 - 1
3. F. Smyth	W10	D6	W4	D1	3 - 1
4. S. Skrypzak	W5	L1	L3	W9	2 - 3
5. W. Turman	L4	W10	W6	L2	2 - 2
6. C. Walker	W9	D3	L5	D8	2 - 2
7. W. Teal	L2	W9	L8	W10	2 - 2
8. Dr. M. Schlosser	L1	L2	W7	D6	1½-2½
9. N. Zacks	L6	L7	W10	L4	1 - 3
10. W. Giles	L3	L5	L9	L7	0 - 4

SAN BERNARDINO SUMMER TOURNAMENT, 1964

	1	2	3	4	Score
1. T. Delaney	W6	D4	W3	W5	3½ - ½
2. F. Smyth	W8	W3	L1	W4	3 - 1
3. Dr. M. Schlosser	W5	L2	D4	W9	2½-1½
4. S. Skrypzak	W10	D1	D3	L2	2 - 2
5. R. Walker	L3	W7	W10	L1	2 - 2
6. Dr. A. Hendy	L1	W8	W9	L7	2 - 2
7. F. Brock	L9	L5	W8	W6	2 - 2
8. G. Herlick	L2	L6	L7	W10*	1 - 3
9. L. Noel	W7	L10*	L6	L3	1 - 3
10. Beaumont	L4	W9*	L5	L8*	1 - 3

An unrated tournament was held at Riverside at the same time, and L. Corbin beat out R. Myers on tie-breaks, both players scoring 3½-½.

HOKE IS WHITTIER CLUB CHAMPION

Larry Hoke is president of the Southern California Chess League, and he became the Whittier club champion in October when he won the playoff with Dick O'Hara after both players had rung up 5-1 scores.

WHITTIER CHESS CLUB CHAMPIONSHIP, 1964

	1	2	3	4	5	6	Score
1. L. Hoke	W11	W4	W5	D3	D2	W6	5 - 1
2. R. O'Hara	W12	W6	W4	W7	D1	D3	5 - 1
3. Fred Frilling	W8	W7	W9	D1	D5	D2	4½-1½
4. Frank Frilling	W13	L1	L2	W10	W7	W5	4 - 2
5. W. Hayes	D9	W11	L1	W6	D3	L4	3 - 3
6. C. Larson	W10	L2	W8	L5	W9	L1	3 - 3
7. H. Franzen	W14	L3	W10	L2	L4	W9	3 - 3
8. T. Knapp	L3	W14	L6	L13	W12	W10	3 - 3
9. H. Rader	D5	W13	L3	W11	L6	L7	2½-3½
10. K. Fleshman	L6	W12	L7	L4	W14	L8	2 - 4
11. N. Lewis	L1	L5	W12	L9	W13*	L14	2 - 4
12. G. Gardner	L2	L10	L11	W14*	L8	W13*	2 - 4
13. H. Gandara	L4	L9	D14	W8	L11*	L12*	1½-4½
14. D. Gosiewski	L7	L8	D13	L12*	L10	W11	1½-4½

GAME OF THE MONTH

Notes by W. Maillard

The following game features an unusual double-exchange sacrifice -- not to win in the middle game, but in a smothering, strategic endgame. It is a dramatic example of pawn power in the center -- supported by two very well-placed minor pieces.

SAN BERNARDINO OPEN 1964Game No. 815 - French Defense

White Black
E. Wicher W. Maillard

- | | |
|-----------|--------|
| 1. P-Q4 | P-K3 |
| 2. P-K4 | Kt-KB3 |
| 3. Kt-QB3 | P-Q4 |
| 4. B-Kt5 | B-K2 |

5. P-K5 Kkt-Q2

6. P-KR4 P-QB4

7. BxB KxB

If 7... QxB, then 8. Kt-Kt5 is very strong.

8. Q-Q2 ...

An unusual line. 8. Q-Kt4 is considered strongest.

8. . . . K-B1
 8... Kt-QB3 (guarding the Q
 against 9. Q-Kt5+ was also
 possible).

- 9. P-B4 PxP
- 10. Kt-Kt5 Kt-QB3
- 11. Kt-KB3 Q-R4
- 12. QxQ KtxQ
- 13. 0-0-0 P-QR3

Flanning P-QKt4 and Kt-B5 to re-
 move White's Kt on Q6.

- 14. Kt-Q6 K-K2

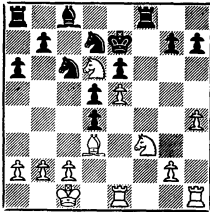
Not P-QKt4 immediately, because
 of the embarrassing 15. Kt-KKt5!

- 15. P-B5? . . .

Weakens the center. Better was

16. KtxQP, after which Black's QB
 may prove to be a handicap.

- 15. . . . Kt-QB3
- 16. PxP PxP
- 17. R-K1 R-B1
- 18. B-Q3 . . .



- 18. . . . RxKt!

Busts up White's center and elimi-
 nates the Knight on Q6.

- 19. PxR Kt3xP
- 20. Kt-B5+? . . .

Better was 20. KtxB+, RxKt; 21. BxP, P-Q6!
 (threatening P-Q7+) after which

Black seems to have only slightly the
 better of it.

- 20. . . . PxKt
- 21. P-KB4 K-B3
- 22. PxKt ch KtxP
- 23. KR-B1 B-Q2
- 24. R-B4 P-KKt3
- 25. R1-B1 Kt-B3
- 26. P-R5 R-K1
- 27. R4-B2 R-K5!

To either straighten out the Pawns, or
 (if White doesn't take) to play P-KKt4
 and P-KB5.

- 28. BxR QPxB
- 29. PxP PxP
- 30. R-R2 Kt-K4
- 31. R-R8 Kt-B6
- 32. R-R7 . . .

The time control in the first and sec-
 ond rounds was 45 minutes in 90 min-
 utes. This and the next move of my
 opponent were influenced by severe
 time-trouble.

- 32. . . . B-B3
- 33. P-B3? . . .

This leads to a quick loss. If 3 con-
 nected passed Pawns are strong, 4
 are unstoppable.

- 33. . . . P-Q6
- 34. R-R3 P-KKt4
- 35. K-Q1 P-Kt5
- 36. RxKt KtPxR
- 37. K-Q2 K-K4
- 38. R-KR1 K-B5
- 39. R-R2 K-Kt6
- 40. Lost on time!

Tournament of Champions

Game No. 816 - Ninzo-Indian Defense the Black King is left without defenders!

White Black
J. Earnest J. Loftsson

Black's 21. . . . , Q-R4 is a refined but quite faulty combination in which a pin is not a pin at all. Even the best can do it!

- | | |
|-----------|----------|
| 1. P-Q4 | Kt-KB3 |
| 2. P-QB4 | P-K3 |
| 3. Kt-QB3 | B-Kt5 |
| 4. P-QR3 | BxKt ch |
| 5. Px B | P-B4 |
| 6. P-K3 | P-QKt3 |
| 7. Kt-B3 | B-Kt2 |
| 8. B-Q3 | Kt-K5 |
| 9. Q-B2 | P-B4 |
| 10. 0-0 | 0-0 |
| 11. Kt-Q2 | Q-R5 |
| 12. P-B3 | Kt-KB3 |
| 13. P-K4 | Kt-B3 |
| 14. QPxP | PxKP |
| 15. KtxP | KtxKt |
| 16. BxKt | PxP |
| 17. B-K3 | Kt-R4 |
| 18. BxBP | BxB |
| 19. Px B | RxRch |
| 20. RxR | KtxP |
| 21. Q-Q3 | Q-R4 |
| 22. QxKt | R-QB1 |
| 23. B-Q6 | Resigns. |

White Black
W. Maillard J. Loftsson

- | | |
|---------------|----------|
| 1. P-K4 | P-QB4 |
| 2. Kt-KB3 | P-K3 |
| 3. P-Q4 | PxP |
| 4. KtxP | Kt-QB3 |
| 5. Kt-QB3 | Q-B2 |
| 6. B-K3 | P-QR3 |
| 7. B-K2 | Kt-B3 |
| 8. 0-0 | B-K2 |
| 9. P-B4 | P-Q3 |
| 10. Q-K1 | 0-0 |
| 11. Q-Kt3 | KtxKt |
| 12. BxKt | P-QKt4 |
| 13. P-K5 | PxP |
| 14. PxP | B-B4 |
| 15. BxB | QxB ch |
| 16. K-R1 | Kt-Q2 |
| 17. B-Q3 | QxP |
| 18. Q-B3 | Q-Kt1 |
| 19. QR-K1 | P-Kt5 |
| 20. Kt-K4 | Kt-K4 |
| 21. Kt-B6 ch! | PxKt |
| 22. QxP | KtxB |
| 23. PxKt | P-QR4 |
| 24. R-K4 | P-K4 |
| 25. R-B3 | Resigns. |

Game No. 817 - Sicilian Defense

Black wins a key center Pawn in a short skirmish, but White has seen further ahead. After 21. Kt-B6 ch

Mechanics' Institute

Game No. 818 - Queens Gambit

White Black
C. Schroth J. Jaffray

- | | |
|---------|--------|
| 1. P-Q4 | Kt-KB3 |
|---------|--------|

2. P-QB4 P-K3
 3. P-Kt5 P-B4
 4. P-K3 PxP
 5. PxP B-Kt5 ch
 6. Kt-Q2 P-KR3
 7. B-R4 P-KKt4
 8. B-Kt3 Kt-K5
 9. Kt-B3 P-B4
 10. B-K5 R-Kt1
 11. P-QR3 KtxKt
 12. KxKt BxKt
 13. KxB! P-Q3
 14. Q-R5 ch K-Q2
 15. Q-B7 ch Q-K2
 16. QxR PxB
 17. PxP K-B2
 18. K-B3 Kt-B3
 19. R-Q1 R-Kt8
 20. P-KR4 B-Q2
 21. Q-Kt6 P-Kt4
 22. P-QKt4 PxBP
 23. Q-B6 P-QR4
 24. QxQ KtxQ
 25. PxKtP PxP ch
 26. PxP PxP
 27. R-R7 Kt-Q4 ch
 28. RxKt PxR
 29. P-K6 K-Q3
 30. PxB R-QR1
 31. B-K2 R-R6 ch
 32. K-B2 K-B2
 33. R-B7 R-R7 ch
 34. K-Q1 R-R8 ch
 35. K-Q2 R-R7 ch
 36. K-K1 R-R8 ch
 37. B-Q1 P-B6
 38. RxP P-Q5?
 I-B7 wins! After 39. QxQP, K-Q1
 V hite cannot stop the pawn. Time
 trouble!

39. K-K2 R-R7 ch
 40. K-B3 K-Q1
 41. R-Q5 R-Q7
 42. B-R4 R-R7
 If P-B7, 43. R-K5!
 43. R-QR5 P-Kt5 ch
 44. K-K4 K-K2
 45. R-K5 ch Resigns.

Game No. 819. - French Defense

	White	Black
	A. Bourke	C. Capps
1.	P-K4	P-K3
2.	P-Q4	P-Q4
3.	Kt-QB3	B-Kt5
4.	P-K5	P-QB4
5.	P-QR3	BxKt ch
6.	PxB	Q-B2
7.	Kt-B3	Kt-K2
8.	B-Q3	...
8.	P-QR4 prevents the restriction of the Q side.	
8.	...	P-B5
9.	B-K2	Q-R5
10.	B-Q2	QKt-B3
	But the last three moves merely re- lieve the tension in the center!	
11.	0-0	0-0
12.	R-K1	B-Q2
13.	B-KB1	QR-Q1
14.	Kt-Kt5	P-KR3
15.	Kt-R3	P-KB4
16.	Kt-B4	K-R2
17.	R-K3	Kt-KKt1
18.	R-Kt3	Kt(3)-K2
19.	P-QR4	...
19.	...	Q-R3

20. B-B1	P-KKt4	50. R-KB1	RxR
21. Kt-R5	Kt-Kt3	51. BxR	R-K7 ch
22. P-B4	P-Kt5	52. K-Kt3	RxBP
23. B-R3	R-B2	53. B-R5	R-QKt7
24. P-R3	PxP	54. P-K6	RxB
25. PxP	B-K1	55. P-K7	R-Kt6 ch
26. B-K2	R-QB1	56. K-B2	R-Kt7 ch
27. K-R1	...	57. B-K2	Resigns.

K-R2, it turns out, was the best place for the King, to protect the RP.

27. ...	K-Q2
28. B-QKt4	Q-Kt3
29. P-R5	Q-Q1
30. P-R6	P-Kt3
31. Q-KKt1	Q-R5
32. Q-Kt2	K-R1
33. R-KKt1	B-B2
34. Q-B2	Q-Q1

RxKt was not yet threatened, so K-R2 was possible.

35. RxKt	BxR
36. RxB	Q-K1
37. Q-Kt3	R-R2
38. B-Q6	...

After 38. Kt-B6, KtxKt, 39. PxKt White threatens 40. R-Kt7 and B-R5.

38. ...	Q-B2
39. Kt-B6	PxKt.
40. RxKt	...

PxKt was still strong.

40. ...	R-KKt1
41. RxQ	RxQ
42. R-B8 ch	K-Kt2
43. K-R2	RxBP
44. B-Q1	R-R1
45. R-B6	R-K1
46. B-QKt4	R-K6
47. B-KR5	R-KKt1
48. RxKP	K-R2
49. R-K7 ch	K-R1

Game No. 820 - English

	White	Black
	D. Clark	V. Radaikin
A neat mating position results from some risky defensive play by White.		
1.	P-QB4	P-KKt3
2.	Kt-QB3	B-Kt2
3.	P-KKt3	Kt-KB3
4.	B-Kt2	0-0
5.	Kt-B3	P-Q3
6.	0-0	Kt-R4
7.	P-Q4	P-KB4
8.	P-K4	P-B5
9.	P-K5	Kt-QB3
10.	R-K1	B-Kt5
11.	KPxP	KPxP
12.	R-K4	Q-Q2
13.	P-Q5	Kt-K4
14.	KtxKt	BxKt
15.	P-B3	B-R6
16.	P-KKt4	BxB
17.	KxB	Kt-B3
18.	R-K1	KtxP!
19.	PxKt	P-B6 ch
20.	K-R3	...
If K-R1, QxP 21. R-KKt, Q-R6.		
20. ...		P-KR4
21.	R-KKt1	PxP ch
22.	RxP	R-B4
23.	RxP ch	K-B2
24.	Resigns.	

Clock Exhibition, Davis, Davis 1964

20. Kt-B5ch

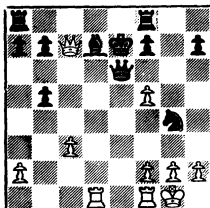
PxKt

21. PxP

QR-B1

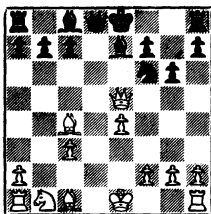
Game No. 821 - Evans Gambit

White	Black
R. Fischer	O. Celle
1. P-K4	P-K4
2. Kt-KB3	Kt-QB3
3. B-B4	B-B4
4. P-QKt4	BxP
5. P-B3	B-K2
6. P-Q4	P-Q3
Fischer prefers.....	Kt-QR4
7. PxP	KtxP
8. KtxKt	PxKt
9. Q-R5	P-KKt3
10. QxKP	Kt-B3



22. RxBch!	QxR
23. P-B6ch	KtxP
24. R-K1ch	Kt-K5
25. RxKtch	K-B3
26. QxQ	KR-Q1
27. Q-Kt4	Resigns

A game in Fischer's best style!

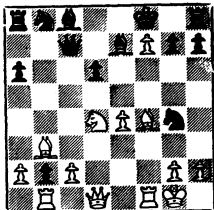


11. B-R3	R-B1
Black is in a terrible bind. The text unpins the Kt. Note that if K-B1; 12. QxKt.	
12. 0-0	Kt-Kt5
13. Q-Kt3	BxB
14. KtxB	Q-K2
15. B-Kt5ch	P-QB3
Now the White Kt will head for Q6.	
16. Kt-B4	Q-K3
17. QR-Q1	PxB
18. Q-B7	B-Q2
19. Kt-Q6ch	K-K2

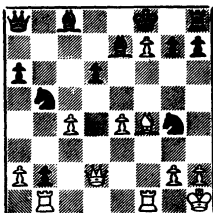
Game No. 822 - Sicilian

White	Black
R. Fischer	J. Blackstone
1. P-K4	P-QB4
2. Kt-KB3	P-Q3
3. P-Q4	PxP
4. KtxP	Kt-KB3
5. Kt-QB3	P-QR3
6. B-QB4	P-K3
7. 0-0	B-K2
8. B-Kt3	Q-B2
9. P-B4	P-QKt4
10. P-B5	P-Kt5
11. PxP	PxKt
Black is playing this game very well. Here White makes an un-sound sacrifice because 11. QKt-K2, P-K4; 12. Kt-KB3, B-Kt2 and Black would have the advantage.	
12. PxPch	K-B1

- 13. B-Kt5 Kt-Kt5!
- 14. B-KB4 PxP
- 15. R-Kt1



- 15. ... Kt-QB3
- 16. B-Q5 KtxKt
- 17. BxR Q-R2
- 18. K-R1 Kt-Kt4
- 19. Q-Q2 QxB
- 20. P-B4



20. ... Kt-R2
 Black has 3 pieces for a R and ought to win this game. But he tries to hang on to everything and his K position goes to pieces. 20. ...Kt-B3 followed by ... KxP would give better chances.

- 21. BxP Kt-QB3
- 22. BxBch KxB
- 23. Q-Kt5ch K-B1
- 24. Q-B5ch Kt-K2
- 25. Q-B7 Kt-KB3
- 26. P-K5 B-B3
- 27. Q-Q8ch KxP
- 28. QxR B-Kt2
- 29. RxP QxBP
- 30. R/2-KB2 Kt-Kt3
- 31. RxKtch PxR
- 32. RxPch K-K2
- 33. QxPch K-Q1
- 34. R-Q6ch K-B1
- 35. Q-Q7ch K-Kt1
- 36. Q-Q8ch K-R2
- 37. Q-Kt6ch K-R1
- 38. RxKt Resigns

Bobby Fischer won all 10 of the clock games at Davis. He played 1. P-K4 in all games. There were 3 Evans Gambits and 1 Vienna Gambit!

SECOND MONTEREY INTERNATIONAL OPEN CHESS TOURNAMENT

March 20-21, 1965

San Carlos Hotel, Monterey

Tournament Director: International Master George Koltanowski

Entry Fee: \$12 USCF Rated

Prizes: 1-\$150, 2-\$75, 3-\$35, etc.

Rounds: 1 - Saturday, 11:00 Am

40 moves in 1½ hours

2 - Saturday, 3:00 Pm

40 moves in 1½ hours

3 - Saturday, 7:00 Pm

40 moves in 2 hours

4 - Sunday, 9:00 Am

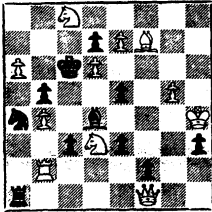
40 moves in 2 hours

5 - Sunday, 1:30 Pm

40 moves in 2 hours

TASKS

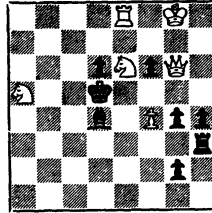
No. 227



Mate in 3

(Frederick Gamage
Second Prize
"Natal Mercury"
1911)

No. 228



Mate in 4

(Hans Bincer
First Prize
"Die Schwalbe"
1930)

The non-problemist will find this month's selections more to his liking than the usual compositions. No. 228 is particularly witty. White lures the two Black pieces to the "b" file so that they will then interfere with each other on "c3". No. 227 contains model mates, but this should not detract from the player's interest in the strategy involved. Free copies of "U. S. Problem Bulletin" will be sent to all who submit correct solutions to both positions.

Solutions:

No. 225: 1. Sa6+ (1. Qg4? , 1. Qd4? met by 1... Qa4 and 1... Qc4)

No. 226: Try, 1. Sf4. Key 1. Se4.