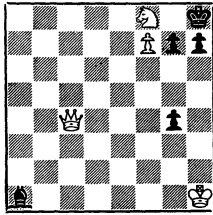


THE CALIFORNIA CHESS REPORTER

VOLUME XV, NUMBER 1

JULY-AUGUST, 1965

Mate in Three



Sam Loyd -- the "Love Chase "

FROM: 244 Kearny Street, 4th Floor
San Francisco, Calif. 94108

TO:

Mr. David Lawson
111 Montague Street
Brooklyn, New York 10002

THE CALIFORNIA CHESS REPORTER

Vol. XV, No. 1 \$2 per year July-August, 1965

THE CALIFORNIA CHESS REPORTER, 244 Kearny Street, San Francisco 94108

Published Bi-monthly

Official Organ of the California State Chess Federation

Editor: Guthrie McClain

Associate Editors: Gordon S. Barrett, Los Angeles; Dr. Mark W. Eudey, Atherton;

Neil T. Austin, Sacramento; Irving Rivise, Los Angeles

Games Editor: William G. Addison

Guest Annotator: Intl. Master Imre Konig

Reporter Tasks: Robert E. Burger

Second-class postage paid at San Francisco, California

CONTENTS

| | |
|--|---|
| Pacific and Southwest Open 2-4 | So. Calif. League Open 13 |
| Statement of Owners'hip 4 | Santa Monica Experts & Masters . . 14 |
| Southern California Open 4-6 | Mechanics' Institute Skittles . . . 14-15 |
| Calif. Junior Championship 6-7 | Game of the Month 15 |
| So. Calif. Expert Candidates . . 8-10 | Games 16-23 |
| San Francisco Amateur 11-12 | Reporter Tasks 24 |

THE REPORTER IN FIFTEENTH YEAR

Eleven years ago there appeared in this space: "With this issue THE REPORTER embarks upon its fourth year. We feel like patting ourselves on the back for having lasted this long. . ." With the start of our fifteenth year we feel that we have lasted a long time, indeed. While we still believe that the odds are against any chess periodical lasting very long, and the odds are even greater against a purely local chess periodical, we are beginning to think that perhaps the official organ of the California State Chess Federation is an exception to the rule. If this is true, it must be because of the strength of the CSCF. Its members are pillars of strength. Whenever we are in trouble, someone comes up to fill the gap.

Our readers will notice two changes this year. We have changed our publication frequency to six issues per year instead of eight, and we have a new Games Editor, William G. Addison.

BISGUIER WINS PACIFIC AND SOUTHWEST OPEN

Arthur Bisguier of New York won the annual Pacific and Southwest Open, held over the July 4th week end, by the fine score of $6\frac{1}{2}$ - $\frac{1}{2}$. The Tournament was a strong one and Grandmaster Bisguier had several long adjourned games. Bisguier's only draw was against young Richard Laver, who also defeated runner-up Carl Pilnick. After Pilnick, who scored 6-1, three players tied for third place: Charles Henin, Jim Schmitt and Joe Mego with $5\frac{1}{2}$ - $1\frac{1}{2}$ scores. Following with 5-2 were seven players, including three juniors: Frank Thornally, David Blohm and Robert Bliss.

The prizes totalled \$725, headed by Bisguier, \$300, and Pilnick \$150. The tournament was held at Joslyn Hall in Santa Monica and was directed by Herbert T. Abel.

PACIFIC AND SOUTHWEST OPEN, JULY 4 WEEK END, 1965

| | 1 | 2 | 3 | 4 | 5 | 6 | 7 | Score |
|-------------------|-----|-----|-----|-----|-----|-----|-----|---------------------------------|
| 1. A. Bisguier | W65 | W42 | W10 | D13 | W6 | W14 | W3 | $6\frac{1}{2}$ - $\frac{1}{2}$ |
| 2. C. Pilnick | W21 | W25 | L13 | W35 | W16 | W22 | W7 | 6 - 1 |
| 3. C. Henin | W51 | W47 | W5 | W22 | D14 | W4 | L1 | $5\frac{1}{2}$ - $1\frac{1}{2}$ |
| 4. J. Schmitt | W50 | W28 | D9 | W40 | W13 | L3 | W14 | $5\frac{1}{2}$ - $1\frac{1}{2}$ |
| 5. J. Mego | W74 | W72 | L3 | W26 | W18 | D27 | W15 | $5\frac{1}{2}$ - $1\frac{1}{2}$ |
| 6. F. Thornally | D58 | W31 | W23 | W15 | L1 | W28 | D11 | 5 - 2 |
| 7. D. Blohm | W46 | W26 | L15 | W71 | W29 | W8 | L2 | 5 - 2 |
| 8. P. Quillen | D56 | W54 | W29 | D9 | W24 | L7 | W23 | 5 - 2 |
| 9. R. Bliss | W70 | W44 | D4 | D8 | L22 | W39 | W27 | 5 - 2 |
| 10. E. Wicher | W53 | W69 | L1 | W25 | D39 | D12 | W24 | 5 - 2 |
| 11. J. Hanken | D19 | W58 | L62 | W21 | W56 | W20 | D6 | 5 - 2 |
| 12. J. Mortz | L72 | W74 | W50 | W67 | D17 | D10 | W26 | 5 - 2 |
| 13. R. Laver | W32 | W18 | W2 | D1 | L4 | L15 | W22 | $4\frac{1}{2}$ - $2\frac{1}{2}$ |
| 14. I Rivise | W36 | W34 | W37 | W24 | D3 | L1 | L4 | $4\frac{1}{2}$ - $2\frac{1}{2}$ |
| 15. N. Lessing | D31 | W63 | W7 | L6 | W41 | W13 | L5 | $4\frac{1}{2}$ - $2\frac{1}{2}$ |
| 16. S. Almgren | W61 | D23 | D19 | W36 | L2 | W29 | D17 | $4\frac{1}{2}$ - $2\frac{1}{2}$ |
| 17. S. Matzner | W59 | L29 | W41 | W62 | D12 | D23 | D16 | $4\frac{1}{2}$ - $2\frac{1}{2}$ |
| 18. S. Hohensee | W33 | L13 | W34 | W42 | L5 | D47 | W43 | $4\frac{1}{2}$ - $2\frac{1}{2}$ |
| 19. D. Anderson | D11 | W56 | D16 | D30 | L20 | W40 | W42 | $4\frac{1}{2}$ - $2\frac{1}{2}$ |
| 20. E. Villasenor | L52 | D32 | W58 | W31 | W19 | L11 | W39 | $4\frac{1}{2}$ - $2\frac{1}{2}$ |
| 21. P. Perillo | L2 | D45 | W32 | L11 | W66 | W44 | W47 | $4\frac{1}{2}$ - $2\frac{1}{2}$ |
| 22. A Spiller | W39 | W35 | W30 | L3 | W9 | L2 | L13 | 4 - 3 |
| 23. A. Weiss | W68 | D16 | L6 | W51 | W62 | D17 | L8 | 4 - 3 |
| 24. W. Maillard | W48 | W57 | W27 | L14 | L8 | W35 | L10 | 4 - 3 |
| 25. A Kempner | W60 | L2 | W72 | L10 | D44 | W45 | D30 | 4 - 3 |
| 26. B. Pollard | W38 | L7 | W61 | L5 | W72 | W33 | L12 | 4 - 3 |
| 27. L. Kupersmith | W49 | W81 | L24 | D28 | W40 | D5 | L9 | 4 - 3 |

THE CALIFORNIA CHESS REPORTER

PACIFIC AND SOUTHWEST OPEN, JULY 4 WEEK END, 1965

| | 1 | 2 | 3 | 4 | 5 | 6 | 7 | Score |
|---------------------|-----|-----|-----|------|-----|-----|-----|---------|
| 28. P. Rhee | W76 | L4 | W52 | D27 | W30 | L6 | W46 | 4½ - 2½ |
| 29. M. Kerllenevich | W67 | W17 | L8 | W57 | L7 | L16 | W52 | 4 - 3 |
| 30. F. Smyth | W55 | W66 | L22 | D19 | L28 | W57 | D25 | 4 - 3 |
| 31. L. Harter | D15 | L6 | W78 | L20 | D32 | W72 | W49 | 4 - 3 |
| 32. P. Donahue | L13 | D20 | L21 | W80 | D31 | W71 | W56 | 4 - 3 |
| 33. F. McReynolds | L18 | W53 | L40 | W38 | W50 | L26 | W48 | 4 - 3 |
| 34. J. Alexander | W75 | L14 | L18 | W69* | W48 | D42 | D37 | 4 - 3 |
| 35. G. Gean | W64 | L22 | W48 | L2 | W74 | L24 | W55 | 4 - 3 |
| 36. M. Newborn | L14 | W77 | W47 | L16 | L43 | W74 | W57 | 4 - 3 |
| 37. K. Stani | W77 | W52 | L14 | L39 | W67 | D43 | D34 | 4 - 3 |
| 38. E. Hoshino | L26 | D51 | W54 | L33 | W81 | W68 | D41 | 4 - 3 |
| 39. J. McDonough | L22 | W55 | W64 | W37 | D10 | L9 | L20 | 3½ - 3½ |
| 40. S. Sloan | W66 | D46 | W33 | L4 | L27 | L19 | W61 | 3½ - 3½ |
| 41. L. Raterman | D54 | W78 | L17 | W44 | L15 | D56 | D38 | 3½ - 3½ |
| 42. S. Rains | W73 | L1 | W59 | L18 | W65 | D34 | L19 | 3½ - 3½ |
| 43. G. Hunnex | L57 | L61 | W49 | W55 | W36 | D37 | L18 | 3½ - 3½ |
| 44. D. Blanchard | W71 | L9 | W69 | L41 | D25 | L21 | W59 | 3½ - 3½ |
| 45. M. Fabian | L47 | D21 | L56 | W54 | W58 | L25 | W62 | 3½ - 3½ |
| 46. R. Smith | L7 | D40 | W63 | L56 | W51 | W62 | L28 | 3½ - 3½ |
| 47. A. Coles | W45 | L3 | L36 | W61 | W59 | D18 | L21 | 3½ - 3½ |
| 48. H. Cillers | L24 | W75 | L35 | W81 | L34 | W50 | L33 | 3 - 4 |
| 49. E. Clarke | L27 | L71 | L43 | W77 | W75 | W65 | L31 | 3 - 4 |
| 50. V. Fagin | L4 | W76 | L12 | W52 | L33 | L48 | W79 | 3 - 4 |
| 51. M. Goodall | L3 | D38 | W80 | L23 | L46 | D58 | W66 | 3 - 4 |
| 52. A. Hatch | W20 | L37 | L28 | L50 | W73 | W66 | L29 | 3 - 4 |
| 53. A. Jiron | L10 | L33 | L66 | L70 | W80 | W73 | W65 | 3 - 4 |
| 54. R. Neustaedter | D41 | L8 | L38 | L45 | D78 | W70 | W71 | 3 - 4 |
| 55. H. Rader | L30 | L39 | W76 | L43 | W60 | W69 | L35 | 3 - 4 |
| 56. S. Salter | D8 | L19 | W45 | W46 | L11 | D41 | L32 | 3 - 4 |
| 57. H. Shipin | W43 | L24 | W81 | L29 | W71 | L30 | L36 | 3 - 4 |
| 58. A. Wicher | D6 | L11 | L20 | W78 | L45 | D51 | W68 | 3 - 4 |
| 59. F. Boschan | L17 | W70 | L42 | W60 | L97 | D61 | L44 | 2½ - 4½ |
| 60. L. Mulinex | L25 | L67 | W68 | L59 | L55 | D75 | W77 | 2½ - 4½ |
| 61. G. Olsson | L16 | W43 | L26 | L47 | W64 | D59 | L40 | 2½ - 4½ |
| 62. H. Rogosin | D78 | W80 | W11 | L17 | L23 | L46 | L45 | 2½ - 4½ |
| 63. Dr. G. Wood | D80 | L15 | L46 | L66 | L79 | W64 | W75 | 2½ - 4½ |
| 64. J. Baldwin | L35 | W65 | L39 | L74 | L61 | L63 | BYE | 2 - 5 |
| 65. Dr. B. Collins | L1 | L64 | W70 | W73 | L42 | L49 | L53 | 2 - 5 |
| 66. R. Cortes | L40 | L30 | W53 | W63 | L21 | L52 | L51 | 2 - 5 |
| 67. G. Freimann | L29 | W60 | W79 | L12 | L37 | - | - | 2 - 5 |
| 68. R. McCollough | L23 | L73 | L60 | W76 | W70 | L38 | L58 | 2 - 5 |
| 69. J. Pyle | BYE | L10 | L44 | L34 | - | L55 | W76 | 2 - 5 |

PACIFIC AND SOUTHWEST OPEN, JULY 4 WEEKEND, 1965

| | 1 | 2 | 3 | 4 | 5 | 6 | 7 | Score |
|-----------------|-----|-----|-----|-----|-----|-----|-----|--------|
| 70. R. Rogers | L9 | L59 | L65 | W53 | L68 | L54 | W78 | 2 - 5 |
| 71. A. Romero | L44 | W49 | W73 | L7 | L57 | L32 | L54 | 2 - 5 |
| 72. W. Stewart | W12 | L5 | L25 | W75 | L26 | L31 | - | 2 - 5 |
| 73. S. Vale | L42 | W68 | L71 | L65 | L52 | L53 | W80 | 2 - 5 |
| 74. G. Wren | L5 | L12 | W77 | W64 | L35 | L36 | - | 2 - 5 |
| 75. B. Klein | L34 | L48 | BYE | L72 | L49 | D60 | L63 | 1½-5½ |
| 76. R. Engler | L28 | L50 | L55 | L68 | L77 | W78 | L69 | 1 - 6 |
| 77. D. Joseph | L37 | L36 | L73 | L49 | W76 | D80 | L60 | 1½- 5½ |
| 78. J. Kent | D62 | L41 | L31 | L58 | D54 | L76 | L70 | 1 - 6 |
| 79. W. McDonald | L81 | BYE | L67 | - | W63 | - | L50 | 2 - 5 |
| 80. K. Miners | D63 | L62 | L51 | L32 | L53 | D77 | L73 | 1 - 6 |
| 81. J. Varis | W79 | L27 | L57 | L48 | L38 | - | - | 1 - 6 |

| | |
|-------------------------|--|
| Statement of Ownership: | THE CALIFORNIA CHESS REPORTER |
| Published..... | Bi-monthly At.....San Francisco, California |
| | Entered as second-class matter at San Francisco, California |
| Publisher..... | Calif. State Chess Federation, 244 Kearny St., S.F. |
| Editor..... | Guthrie McClain, 244 Kearny St., San Francisco |
| Business Manager. | Ralph Hultgren, 244 Kearny St., San Francisco |
| Owned entirely by. | California State Chess Federation, 244 Kearny St., San Francisco 94108. (Ownership divided equally among all members of the Federation.) |

BENKO SOUTHERN CALIFORNIA OPEN CHAMPION

Pal Benko of San Diego took first honors in the annual Southern California Open, held in August, with a 5½-½ score. The grandmaster (who recently became the club pro of John Alexander's Herman Steiner Chess Club of San Diego) drew a game with the tournament's other grandmaster, Larry Evans. Evans dropped a half-point in the first round against Stephen Tarin of New York, and tied for second, 5-1.

The announced prizes were \$200 for first place, \$100 for second, plus 5 other prizes. The tournament was held at Joslyn Hall in Santa Monica and was directed by Herbert T. Abel.

SOUTHERN CALIFORNIA OPEN, AUGUST 27-29, 1965

| | 1 | 2 | 3 | 4 | 5 | 6 | Score |
|-----------------|-----|-----|-----|-----|------|-----|-------|
| 1. P. Benko | W23 | W5 | W8 | W15 | W13 | D2 | 5½ |
| 2. L. Evans | D37 | W48 | W34 | W43 | W21 | D1 | 5 |
| 3. N. Lessing | W18 | D4 | W24 | W6 | W9 | D7 | 5 |
| 4. P. Eberlein | W45 | D3 | D12 | W42 | W15 | W10 | 5 |
| 5. F. Thornally | W40 | L1 | W30 | W36 | W12 | W13 | 5 |
| 6. S. Almgren | W57 | W49 | D21 | L3 | W42* | W20 | 4½ |
| 7. P. Quillen | W60 | W28 | W17 | L13 | W11 | D5 | 4½ |

THE CALIFORNIA CHESS REPORTER

SOUTHERN CALIFORNIA OPEN, AUGUST 27-29, 1965

| | 1 | 2 | 3 | 4 | 5 | 6 | Score |
|---------------------|-----|-----|-----|-----|------|-----|-------|
| 8. H. Mayer | W39 | W36 | L1 | D22 | W31 | W21 | 4½ |
| 9. J. Alexander | W11 | L13 | W19 | W47 | L3 | W33 | 4 |
| 10. R. Bliss | W50 | L21 | W60 | W49 | W17 | L4 | 4 |
| 11. M. Fabian | L9 | W55 | W58 | W16 | L7 | W28 | 4 |
| 12. I. Rivise | W51 | D24 | D4 | W41 | L5 | W37 | 4 |
| 13. A. Spiller | W32 | W9 | W16 | W7 | L1 | L5 | 4 |
| 14. K. Stani | W55 | W50 | L15 | W38 | L22 | W35 | 4 |
| 15. D. Sutherland | W30 | W41 | W14 | L1 | L4 | W22 | 4 |
| 16. J. Tossas | W29 | W25 | L13 | L11 | W30 | W38 | 4 |
| 17. E. Wicher | W33 | W22 | L7 | W28 | L10 | W23 | 4 |
| 18. D. Anderson | L3 | W62 | D25 | D34 | D41 | W42 | 3½ |
| 19. M Goodall | L20 | W44 | L9 | W59 | D42 | W41 | 3½ |
| 20. L. Kupersmith | W19 | D52 | L31 | W26 | W24 | L6 | 3½ |
| 21. C. Henin | W27 | W10 | D6 | W31 | L2 | L8 | 3½ |
| 22. P. Perillo | W47 | L17 | W59 | D8 | W14 | L15 | 3½ |
| 23. Dr. Bullockus | L1 | L57 | W27 | W29 | W49 | L17 | 3 |
| 24. A. Coles | W53 | D12 | L3 | W40 | L20 | D36 | 3 |
| 25. W. Cunningham | W38 | L16 | D18 | D52 | L35 | W39 | 3 |
| 26. F. Downs | L48 | D40 | W46 | L20 | W58* | D31 | 3 |
| 27. V. Fagin | L21 | L50 | L23 | W44 | W40 | W46 | 3 |
| 28. G. Gean | W44 | L7 | W57 | L17 | W32 | L11 | 3 |
| 29. M. Gray | L11 | L58 | W44 | L23 | W59* | W49 | 3 |
| 30. L. Harter | L15 | W56 | L5 | W57 | L16 | W48 | 3 |
| 31. M. Leidner | W54 | D43 | W20 | L21 | L8 | D26 | 3 |
| 32. S. Marford | L13 | W61 | L41 | W53 | L28 | W50 | 3 |
| 33. R. Neustaedter | L17 | L34 | W54 | W51 | W52 | L9 | 3 |
| 34. M. Robinson | D42 | W33 | L2 | D18 | L38 | W45 | 3 |
| 35. S. Salter | L43 | W54 | L47 | W50 | W25 | L14 | 3 |
| 36. K. Schaunburger | W46 | L8 | W53 | L5 | D39 | D24 | 3 |
| 37. S. Tarin | D2 | D42 | L49 | W55 | W48 | L12 | 3 |
| 38. A. Wicher | L25 | W45 | W48 | L14 | W34 | L16 | 3 |
| 39. H. Cillers | L8 | L47 | W56 | W58 | D36 | L25 | 2½ |
| 40. G. Olsson | L5 | D26 | W61 | L24 | L27 | W67 | 2½ |
| 41. S. Rains | W62 | L15 | W32 | L12 | D18 | L19 | 2½ |
| 42. H. Rogosin | D34 | D37 | W50 | L4 | D19 | L18 | 2½ |
| 43. R. Wilcox | W35 | D31 | W52 | L2 | L6* | - | 2½ |
| 44. D. Ackerman | L28 | L19 | L29 | L27 | W55* | W57 | 2 |
| 45. R. Clark | L4 | L38 | L55 | W54 | W51 | L34 | 2 |
| 46. R. Cortes | L36 | L60 | L26 | W62 | W53 | L27 | 2 |
| 47. R. Jacobs | L22 | W39 | W35 | L9 | - | - | 2 |
| 48. R. Klein | W26 | L2 | L38 | W60 | L37 | L30 | 2 |
| 49. S. Mosby | W56 | L6 | W37 | L10 | L23 | L29 | 2 |
| 50. A. Platt | L10 | W27 | L42 | L35 | W60 | L32 | 2 |
| 51. J. Robertson | L12 | L53 | W62 | L35 | L45 | W56 | 2 |

SOUTHERN CALIFORNIA OPEN, AUGUST 27-29, 1965

| | 1 | 2 | 3 | 4 | 5 | 6 | Score |
|------------------|-----|-----|-----|-----|------|-----|-------|
| 52. S. Sawyer | W61 | D20 | L43 | D25 | L33 | - | 2 |
| 53. H. Vaughan | L24 | W51 | L36 | L32 | L46 | W55 | 2 |
| 54. A. Jiron | L6 | W23 | L28 | L30 | W61 | L44 | 2 |
| 55. A. Bullockus | L31 | L35 | L33 | L45 | L56 | BYE | 1 |
| 56. K. Forrest | L14 | L11 | W45 | L37 | L44* | L53 | 1 |
| 57. P. Harding | L49 | L30 | L39 | L61 | W54 | L51 | 1 |
| 58. G. McMahon | L59 | W29 | L18 | L39 | L26* | - | 1 |
| 59. H. Treller | W58 | L14 | L22 | L19 | L29* | - | 1 |
| 60. R. Whittaker | L7 | W46 | L10 | L48 | L50 | L40 | 1 |
| 61. J. Wood | L52 | L32 | L49 | W56 | L57 | - | 1 |
| 62. C. Fotias | L41 | L18 | L51 | L46 | - | - | 0 |

*Forfeit

DAVID BLOHM CALIFORNIA JUNIOR CHAMPION

David Blohm of San Francisco won the 1965 California Junior Championship, held at the Mechanics' Institute in San Francisco at the end of June, with a score of $5\frac{1}{2}$ - $\frac{1}{2}$. Blohm, who tied for second last year behind John Blackstone of Saratoga, won five games and drew with Blackstone, the champion in 1963 and 1964.

Blohm won the first prize of \$100, plus \$350 towards the expenses of attending the U.S. Junior Championship in Boston. (He also received \$250 towards the expenses of attending the U.S. Open in Puerto Rico - an amount which was raised by the members of the Mechanics' Institute.) The second and third prizes of \$50 and \$25 were divided between Blackstone, Gregory Gean, and Steve Hohensee.

Players from outside of San Francisco were furnished hotel accommodations without charge. The prizes and hotel accommodations were made available through the generosity of Mrs. Gregor Piatigorsky and the Mechanics' Institute. The tournament was directed by Guthrie McClain and Henry Gross.

CALIFORNIA JUNIOR CHAMPIONSHIP, JUNE 25-27, 1965

| | 1 | 2 | 3 | 4 | 5 | 6 | Score |
|------------------------------|-----|-----|-----|-----|-----|-----|----------------|
| 1. D. Blohm, S.F. | W15 | W14 | W9 | W13 | D2 | W7 | $5\frac{1}{2}$ |
| 2. J. Blackstone, Saratoga | W21 | W20 | W4 | W7 | D1 | D3 | 5 |
| 3. G. Gean, Palos Verdes | W23 | W10 | D13 | W19 | W14 | D2 | 5 |
| 4. S. Hohensee, Santa Monica | W24 | W5 | L2 | W18 | W13 | W9 | 5 |
| 5. M. Morris, S. F. | W22 | L4 | D20 | D26 | W15 | W10 | 4 |
| 6. A. Kanamori, Berkeley | W25 | L9 | W17 | L14 | W21 | W16 | 4 |
| 7. M. Quinlivan, Oakland | W17 | BYE | W12 | L2 | W19 | L1 | 4 |
| 8. R. Hammie, Berkeley | BYE | L13 | L27 | W28 | W26 | W14 | 4 |
| 9. W. Stewart, Hunt. Beach | W29 | W6 | L1 | D11 | W20 | L4 | $3\frac{1}{2}$ |
| 10. D. Bernstein, L.A. | W31 | L3 | D28 | W27 | W11 | L5 | $3\frac{1}{2}$ |

THE CALIFORNIA CHESS REPORTER

CALIFORNIA JUNIOR CHAMPIONSHIP, JUNE 25-27, 1965

| | 1 | 2 | 3 | 4 | 5 | 6 | Score |
|-----------------------------|-----|-----|-----|-----|-----|-----|-------|
| 11. L. Harter, Man. Beach | W16 | L12 | W15 | D9 | L10 | W20 | 3½ |
| 12. R. Bliss, Man. Beach | D26 | W11 | L7 | L20 | W30 | W19 | 3½ |
| 13. S. Sloan, Berkeley | W27 | W8 | D3 | L1 | - | D18 | 3½ |
| 14. M. Goodall, San Rafael | W30 | L1 | W25 | W6 | L3 | L8 | 3 |
| 15. R. Heisler, Hunt. Beach | L1 | W30 | L11 | W24 | L5 | W26 | 3 |
| 16. S. Gruen, L. A. | L11 | L19 | W22 | W25 | W18 | L6 | 3 |
| 17. A. Vinock, Pasadena | L7 | W23 | L6 | L21 | W29 | W25 | 3 |
| 18. P. Rhee, L. A. | L20 | W31 | W24 | L4 | L16 | D13 | 2½ |
| 19. D. Sacuzzo, S. F. | D28 | W16 | W26 | L3 | L7 | L12 | 2½ |
| 20. D. Forthoffer, Glendale | W18 | L2 | D5 | W12 | L9 | L11 | 2½ |
| 21. E. Clarke, L. A. | L2 | L27 | W29 | W17 | L6 | D22 | 2½ |
| 22. H. Einberg, L. A. | L5 | L24 | L16 | W23 | W31 | D21 | 2½ |
| 23. J. Kent, L. A. | L3 | L17 | W31 | L22 | D24 | W30 | 2½ |
| 24. L. Stevens, Pasadena | L4 | W22 | L18 | L15 | D23 | D28 | 2 |
| 25. M. Fabian, L. A. | L6 | W29 | L14 | L16 | W28 | L17 | 2 |
| 26. R. Engler, L. A. | D12 | W28 | L19 | D5 | L8 | L15 | 2 |
| 27. D. Louie, S.F. | L13 | W21 | W8 | L10 | - | - | 2 |
| 28. J. Crane, L.A. | D19 | L26 | D10 | L8 | L25 | D24 | 1½ |
| 29. G. Fennell, Hunt. Beach | L9 | L25 | L21 | BYE | L17 | D31 | 1½ |
| 30. B. Alexander, L.A. | L14 | L15 | BYE | D31 | L12 | L23 | 1½ |
| 31. G. Ruckman, Hunt. Beach | L10 | L18 | L23 | D31 | L22 | D29 | 1 |

DONALD COTTEN WINS EXPERT CANDIDATES TOURNAMENT

Donal Cotten of Riverside won the annual Southern California Expert Candidates tournament, held at various clubs during June and July, by the fine score of 9-1. The cross-tables:

EXPERT CANDIDATES FINALS, EL SEGUNDO, JULY 1965

| | 1 | 2 | 3 | 4 | 5 | Score |
|---------------------|------|-----|-----|------|-----|-------|
| 1. D. Cotten | W20 | W18 | W8 | W3 | W5 | 9 - 1 |
| 2. F. Alonso | W37 | W30 | W18 | W6 | W9 | 8 - 2 |
| 3. P. Perillo | D8 | W12 | D5 | L1 | W10 | 8 - 2 |
| 4. I Besen | W19 | W11 | D20 | W16 | W12 | 7½-2½ |
| 5. N. Zacks | W42* | W6 | D3 | W10 | L1 | 7½-2½ |
| 6. R. Gish | W15 | L5 | W25 | L2 | W14 | 7 - 3 |
| 7. R. Klein | W16 | - | W38 | W29 | W20 | 7 - 3 |
| 8. D. Littrell | D3 | D10 | L1 | L9 | W17 | 7 - 3 |
| 9. S. Skrypzak | L10 | W28 | W24 | W8 | L2 | 7 - 3 |
| 10. M. Kerllenevich | W9 | D8 | W12 | L5 | L3 | 6½-3½ |
| 11. W. McGruder | D32 | L4 | W23 | W21 | D13 | 6½-3½ |
| 12. R. Pease | W18 | L3 | L10 | W20 | L4 | 6½-3½ |
| 13. F. Pye | W23 | D22 | W28 | W25* | D11 | 6½-3½ |
| 14. C. Larson | W27 | W38 | W22 | W15 | L6 | 6 - 4 |
| 15. G. Olsson | L6 | W21 | L16 | L14 | W27 | 6 - 4 |

EXPERT CANDIDATES FINALS, EL SEGUNDO, JULY 1965

| | 1 | 2 | 3 | 4 | 5 | Score |
|--------------------|-----|------|-----|------|------|-------|
| 16. J. Pyle | L7 | W34* | W15 | L4 | D22 | 6 - 4 |
| 17. S. Rubin | W28 | L25 | W32 | W18 | L8 | 6 - 4 |
| 18. R. Tupanjanin | L12 | L1 | L2 | L17 | W26 | 6 - 4 |
| 19. F. Brock | L4 | L32 | W36 | W28 | D21 | 5½-4½ |
| 20. H. Cillers | L1 | D24 | D4 | L12 | L7 | 5½-4½ |
| 21. J. Postma | W29 | L15 | W27 | L11 | D19 | 5½-4½ |
| 22. M. Schlosser | W40 | D13 | L14 | W32* | D16 | 5½-4½ |
| 23. D. Young | L13 | W36 | L11 | W30 | W29* | 5½-4½ |
| 24. M. Carr | W34 | D20 | L9 | - | - | 5 - 5 |
| 25. W. Giles | W26 | W17 | L6 | L13* | - | 5 - 5 |
| 26. G. Herlick | L25 | W37 | W29 | W33 | L18 | 5 - 5 |
| 27. D. Ozdes | L14 | W41 | L21 | W31 | L15 | 5 - 5 |
| 28. H. Shipin | L17 | L9 | L13 | L19 | W39* | 5 - 5 |
| 29. C. Henderson | L21 | W40 | L26 | L7 | L23* | 4½-5½ |
| 30. H. Rader | W39 | L2 | BYE | L23 | W33 | 4½-5½ |
| 31. A. Allen | L41 | L35 | W39 | L27 | BYE | 4 - 6 |
| 32. M. Carroll | D11 | W19 | L17 | L22 | - | 4 - 6 |
| 33. G. Saudek | L36 | W39 | W41 | L26 | L30 | 4 - 6 |
| 34. W. Boyko | L24 | L16* | - | - | - | 3½-6½ |
| 35. T. Fisher | L38 | W31 | - | - | - | 3½-6½ |
| 36. M. Brown | W33 | L23 | L19 | - | - | 3 - 7 |
| 37. G. Castleberry | L2 | L26 | - | - | - | 3 - 7 |
| 38. D. Choate | W35 | L14 | L7 | - | - | 3 - 7 |
| 39. E. Schulz | L30 | L33 | L31 | W41* | L28* | 3 - 7 |
| 40. R. Cohan | L22 | L29 | - | - | - | 2 - 8 |
| 41. D. Orman | W31 | L27 | L33 | L39 | - | 2 - 8 |
| 42. L. Calvin | L5* | - | - | - | - | 3 - 7 |

* Forfeits.

RIVERSIDE-SAN BERNARDINO SECTION

| | 1 | 2 | 3 | 4 | 5 | Score |
|------------------|-----|-----|-----|-----|-----|-------|
| 1. D. Cotten | W4 | W5 | W3 | L2 | W8 | 4 - 1 |
| 2. S. Skrypzak | W9 | L4 | W7 | W1 | W3 | 4 - 1 |
| 3. F. Brock | W6 | W8 | L1 | W5 | L2 | 3 - 2 |
| 4. G. Herlick | L1 | W2 | D9 | D6 | W10 | 3 - 2 |
| 5. W. Giles | W10 | L1 | W8 | L3 | W7 | 3 - 2 |
| 6. M. Schlosser | L3 | L7 | W10 | D4 | W9 | 2½-2½ |
| 7. D. Choate | L8 | W6 | L2 | W9 | L5 | 2 - 3 |
| 8. W. Teal | W7 | L3 | L5 | W10 | L1 | 2 - 3 |
| 9. P. Orth | L2 | W10 | D4 | L7 | L6 | 1½-3½ |
| 10. Dr. A. Hendy | L5 | L9 | L6 | L8 | L4 | 0 - 5 |

THE CALIFORNIA CHESS REPORTER

STEINER CLUB SECTION

| | 1 | 2 | 3 | 4 | 5 | Score |
|--------------------|-----|-----|-----|-----|-----|-------|
| 1. M. Kerllenevich | - | W5 | W11 | W3 | W4 | 4-1 |
| 2. G. Olsson | D14 | W13 | W6 | W5* | D3 | 4-1 |
| 3. L. Grumette | W7 | W14 | W9 | L1 | D2 | 3½-1½ |
| 4. S. Kossover | L9 | W11 | W12 | W7 | L1 | 3-2 |
| 5. S. Rubin | W8 | L1 | W13 | L2* | W6 | 3-2 |
| 6. E. Clarke | W10 | D7 | L2 | W9 | L5 | 2½-2½ |
| 7. R. Rogers | L3 | D6 | W14 | L4 | W9 | 2½-2½ |
| 8. E. Schulz | L5 | L9 | L10 | W11 | W12 | 2-3 |
| 9. A. Russo | W4 | W8 | L3 | L6 | L7 | 2-3 |
| 10. J. Brown | L6 | L12 | W8 | - | W13 | 2-3 |
| 11. D. Foslien | W12 | L4 | L1 | L8 | - | 1-4 |
| 12. A. Zelman | L11 | W10 | L4 | L13 | L8 | 1-4 |
| 13. McGrann | Bye | L2 | L5 | W12 | L10 | 2-3 |
| 14. H. Einberg | D2 | L3 | L7 | - | - | ½-4½ |

TOURNAMENT CLUB SECTION

| | 1 | 2 | 3 | 4 | 5 | Score |
|------------------|-----|------|-----|-----|-----|-------|
| 1. R. Rupanjanin | W12 | W9 | W2* | W3 | W10 | 5-0 |
| 2. N. Zacks | W15 | W14* | L1* | W10 | W7* | 4-1 |
| 3. W. McGruder | W18 | W5 | D10 | L1 | W9 | 3½-1½ |
| 4. L. Calvin | D13 | D15 | L14 | W16 | W11 | 3-2 |
| 5. D. Ozdes | W8 | L3 | W10 | L6 | W13 | 3-2 |
| 6. J. Heffernan | L14 | W12 | W13 | W5 | - | 3-2 |
| 7. A. Ball | L10 | W17 | D9 | W14 | L2* | 2½-2½ |
| 8. M. Carrol | L5 | D13 | L12 | W18 | W16 | 2½-2½ |
| 9. T. Fisher | W11 | L1 | D7 | W15 | L3 | 2½-2½ |
| 10. C. Henderson | W7 | W16 | D3 | L2 | L1 | 2½-2½ |
| 11. F. Binns | L9 | W18 | L5 | W17 | L4 | 2-3 |
| 12. M. Brown | L1 | L6 | W8 | L13 | W18 | 2-3 |
| 13. M. Thomason | D4 | D8 | L6 | W12 | L5* | 2-3 |
| 14. Varga | W6 | L2* | W4 | L7 | - | 2-3 |
| 15. S. Mosby | L2 | D4 | W16 | L9 | - | 1½-3½ |
| 16. Carter | W17 | L10 | L15 | L4 | L8* | 1-4 |
| 17. H. Harris | L16 | L7 | W18 | L10 | - | 1-4 |
| 18. Stine | L3 | L11 | L17 | L8 | L12 | 0-5 |

EL SEGUNDO SECTION

| | 1 | 2 | 3 | 4 | 5 | 6 | Score |
|----------------|---|---|---|---|---|---|-------|
| 1. H. Cillers | X | 1 | ½ | 1 | 1 | 1 | 4½-½ |
| 2. H. Shipin | 0 | X | 1 | 1 | 1 | 1 | 4-1 |
| 3. H. Walpuski | ½ | 0 | X | 1 | 1 | 1 | 3½-1½ |
| 4. G. Saudek | 0 | 0 | 0 | X | 1 | 1 | 2-3 |
| 5. K. Maeder | 0 | 0 | 0 | 0 | X | 1 | 1-4 |
| 6. J. Porter | 0 | 0 | 0 | 0 | 0 | X | 0-5 |

THE CALIFORNIA CHESS REPORTER

| MONTEREY PARK SECTION | | | | | | |
|-----------------------|-----|------|------|------|------|-------|
| | 1 | 2 | 3 | 4 | 5 | Score |
| 1. R. Pease | W8 | W11 | W6 | W2 | D4 | 4½-1½ |
| 2. J. Pyle | W16 | W4 | D7 | L1 | W13* | 3½-1½ |
| 3. W. Boyko | D15 | L7* | W8 | W11 | W6 | 3½-1½ |
| 4. M. Carr | W9 | L2 | W12 | W10 | D1 | 3½-1½ |
| 5. I. Besen | W12 | L6 | L11 | W14 | W7 | 3-2 |
| 6. F. Alonso | W13 | W5 | L1 | W7 | L3 | 3-2 |
| 7. R. Brow | W14 | W3* | D2 | L6 | L5 | 2½-2½ |
| 8. W. Smith | L1 | W16 | L3 | D9 | W10 | 2½-2½ |
| 9. D. Young | L3 | L12 | W16 | D8 | W11 | 2½-2½ |
| 10. A. Allen | L11 | W14* | W13 | L4 | L8 | 2-3 |
| 11. L. Clark | W10 | L1 | W5 | L3 | L9 | 2-3 |
| 12. S. Glassberg | L5 | W9 | L4 | W13 | W15* | 2-3 |
| 13. A. Hatch | L6 | W15 | L10 | L12 | L2 | 2-3 |
| 14. H. Rader | L7 | L10* | W15 | L5 | D16 | 1½-3½ |
| 15. H. Gandara | D3 | L13 | W14* | W16* | L12* | 1½-3½ |
| 16. E. Mayhew | L2 | L8 | L9 | L15* | D14 | ½-4½ |

| DOWNEY SECTION | | | | | | |
|-------------------|-----|------|-----|------|-----|-------|
| | 1 | 2 | 3 | 4 | 5 | Score |
| 1. D. Littrell | W8 | W2 | W7 | W6 | W5 | 5-0 |
| 2. R. Gish | W10 | L1 | W13 | W3 | W6 | 4-1 |
| 3. R. Benz | W15 | D4 | W8 | L2 | W9 | 3½-1½ |
| 4. G. Castleberry | W9 | D3 | L6 | D10 | W11 | 3-2 |
| 5. J. Postma | W14 | L6 | W10 | W7 | L1 | 3-2 |
| 6. S. Anderson | W13 | W5 | W4 | L1 | L2 | 3-2 |
| 7. F. Pye | W16 | W11 | L1 | L5 | D8 | 2½-2½ |
| 8. R. Cohan | L1 | W14 | L3 | W15 | D7 | 2½-2½ |
| 9. R. Henderson | L4 | W16* | D11 | W13* | L3 | 2½-2½ |
| 10. R. Kretten | L2 | W12 | L5 | D4 | W14 | 2½-2½ |
| 11. C. Larson | W12 | L7 | D9 | D14 | L4 | 2-3 |
| 12. D. Orman | L11 | L10 | L14 | Bye | W15 | 2-3 |
| 13. G. Chicoine | L6 | W15 | L2 | L9* | Bye | 2-3 |
| 14. G. Saulter | L5 | L8 | W12 | D11 | L10 | 1½-3½ |
| 15. R. Hull | L3 | L13 | Bye | L8 | L12 | 1-4 |
| 16. R. Pridonoff | L7 | L9* | - | - | - | 0-5 |

| SAN FERNANDO VALLEY | | | | | | |
|---------------------|-----|-----|-----|-----|-----|-------|
| | 1 | 2 | 3 | 4 | 5 | Score |
| 1. P. Perillo | W9 | W10 | W8 | W2 | W6 | 5-0 |
| 2. B. Hernandez | W7 | W4 | L6 | L1 | W8 | 3-2 |
| 3. R. Klein | - | L6 | Bye | W7 | W5 | 3-2 |
| 4. M. Lubin | W5 | L2 | W7 | L6 | W9 | 3-2 |
| 5. R. Neustaedter | L4 | L7 | W9 | W8 | L3 | 2-3 |
| 6. S. Sawyer | - | W3 | W2 | W4 | L1 | 3-2 |
| 7. J. Brier | L2 | W5 | L4 | L3* | Bye | 2-3 |
| 8. S. Wells | Bye | W9 | L1 | L5 | L2 | 2-3 |
| 9. V. Brach | L1 | L8 | L5 | Bye | L4 | 1-4 |
| 10. A. Rich | - | L1 | - | - | - | 0-5 |

ROBERT TRENBERTH WINS SAN FRANCISCO AMATEUR OPEN

Bob Trenberth of Oakland won his biggest tournament when he took the honors in the San Francisco Amateur in July with a perfect score of 5 - 0. Trenberth, who plays a deceptively simple game in the opening but keeps a "kick" for his opponents in the middle game, led all the way and won the \$50 first prize by a margin of half a point over Ira Pohl, runner-up.

The tournament was open to USCF members with ratings under 2,000 was held at the Mechanics' Institute, and was directed by Michael Goodall. There were prizes for first, second, third, B, C, Unrated and Junior.

SAN FRANCISCO AMATEUR OPEN JULY 10-11, 1965

| | 1 | 2 | 3 | 4 | 5 | Score |
|--------------------|-----|-----|--------|---------|------|---------|
| 1. R. Trenberth | W23 | W19 | W5 | W9 | W14 | 5 - 0 |
| 2. I. Pohl | W54 | W21 | W24 | D2 | W18 | 4½ - ½ |
| 3. D. Balfe | W59 | L9 | W29 | W48 | W19 | 4 - 1 |
| 4. W. Cornwall | W25 | W26 | L9 | W43 | W23 | 4 - 1 |
| 5. R. Henry | W41 | W20 | L1 | W28 | W22 | 4 - 1 |
| 6. H. Rosenbaum | W49 | W40 | W7 | D2 | D8 | 4 - 1 |
| 7. S. Sloan | W48 | W11 | L6 | W47 | W20 | 4 - 1 |
| 8. M. Watson | W47 | D27 | W12 | W16 | D6 | 4 - 1 |
| 9. Wm. Caplan | W56 | W3 | W4 | L1 | D13 | 3½ - 1½ |
| 10. S. Cross | D33 | W59 | D13 | D11 | W36 | 3½ - 1½ |
| 11. L. Eaton | W39 | L7 | W25 | D10 | W33 | 3½ - 1½ |
| 12. R. McCollough | W45 | D36 | L8 | W52*W34 | | 3½ - 1½ |
| 13. R. Menaster | W50 | D52 | D10 | W37 | D9 | 3½ - 1½ |
| 14. M. Morris | W29 | W63 | D17 | W36 | L1 | 3½ - 1½ |
| 15. D. Nieder | D16 | W65 | D27 | W24 | D17 | 3½ - 1½ |
| 16. C. Schroth | D15 | W30 | W52*L8 | W32 | | 3½ - 1½ |
| 17. S. Slotnick | W66 | W28 | D14 | D18 | D15 | 3½ - 1½ |
| 18. J. Smail | W64 | W22 | W38 | D17 | L2 | 3½ - 1½ |
| 19. J. Bush | BYE | L1 | W42 | W38*L3 | | 3 - 2 |
| 20. E. Edelstein | W60 | L5 | W54 | W30 | L7 | 3 - 2 |
| 21. I. Frank | W58 | L2 | L50 | W49 | W43* | 3 - 2 |
| 22. R. Henderson | W34 | L18 | W40 | W50 | L5 | 3 - 2 |
| 23. J. Hurt | L1 | W61 | BYE | W27 | L4 | 3 - 2 |
| 24. A. Mc Kenzie | W44 | W42 | L2 | L15 | W39 | 3 - 2 |
| 25. S. Ockman | L4 | W57 | L11 | W55 | W46 | 3 - 2 |
| 26. L. O'Doan | W67 | L4 | W47 | W57 | W50 | 3 - 2 |
| 27. L. Taylor | W35 | D8 | D15 | L23 | W48 | 3 - 2 |
| 28. P. Vayssie | W61 | L17 | W53 | L5 | W44 | 3 - 2 |
| 29. Dr. J. Walters | L14 | W39 | L3 | W58 | W42 | 3 - 2 |
| 30. D. Wilson | W32 | L16 | W55 | L20 | W47 | 3 - 2 |
| 31. F. Berry | L36 | W45 | L48 | W64 | D37 | 2½ - 2½ |

SAN FRANCISCO AMATEUR OPEN
JULY 10-11, 1965

| | 1 | 2 | 3 | 4 | 5 | Score |
|-------------------|-----|-----|------|------|------|--------|
| 32. J. Dwyer | L30 | W62 | D34 | W51* | L16 | 2½-2½ |
| 33. E. Gaylor | D10 | W51 | L36 | W53 | L11 | 2½-2½ |
| 34. J. Mecorney | L23 | W64 | D32 | W63* | L12 | 2½-2½ |
| 35. E. Meyers | L27 | D41 | L58 | W67* | W60 | 2½-2½ |
| 36. S. Sternlieb | W31 | D12 | W33 | L14 | L10 | 2½-2½ |
| 37. J. Sutherland | L38 | W60 | W63 | L13 | D31 | 2½-2½ |
| 38. K. Bendit | W37 | W46 | L18 | L19* | - | 2 - 3 |
| 39. D. Bennett | L11 | L29 | W59 | W40 | L24 | 2 - 3 |
| 40. R. Clark | W56 | L6 | L22 | L39 | W57 | 2 - 3 |
| 41. J. Cornwell | L5 | D35 | L51 | D62 | W56 | 2 - 3 |
| 42. R. Hammie | W43 | L24 | L19 | W45 | L29 | 2 - 3 |
| 43. P. Herbers | L42 | W44 | W46 | L4 | L21* | 2 - 3 |
| 44. J. Jee | L24 | L43 | W60 | W54 | L28 | 2 - 3 |
| 45. E. McNally | L12 | L31 | W56 | L42 | W61 | 2 - 3 |
| 46. O. Olmstead | W57 | L38 | L43 | W61 | L25 | 2 - 3 |
| 47. G. Olsson | L8 | W49 | W26 | L7 | L30 | 2 - 3 |
| 48. A. Schulz | L7 | W56 | W31 | L3 | L27 | 2 - 3 |
| 49. D. Thompson | L6 | L47 | W67 | L21 | W64 | 2 - 3 |
| 50. L. Trottier | L13 | W67 | W21 | L22 | L26 | 2 - 3 |
| 51. M. Burlingame | D65 | L33 | W41 | L32* | - | 1½-3½ |
| 52. R. Hansen | W53 | D13 | L16* | L12* | - | 1½-3½ |
| 53. R. Hough | L52 | W66 | L28 | L33 | D54 | 1½-3½ |
| 54. T. Toleno | L2 | W58 | L20 | L44 | D53 | 1½-3½ |
| 55. T. Zipser | L40 | Bye | L30 | L25 | D62 | 1½-3½ |
| 56. V. Creek | L9 | L48 | L45 | W59 | L41 | 1 - 4 |
| 57. S. Coren | L46 | L25 | W66 | L26 | L40 | 1 - 4 |
| 58. R. Feliciano | L21 | L54 | W35 | L29 | - | 1 - 4 |
| 59. C. Fotias | L3 | L10 | L39 | L56 | W66 | 1 - 4 |
| 60. N. Johnson | L20 | L37 | L44 | W66 | L35 | 1 - 4 |
| 61. G. Metcalf | L28 | L23 | W62 | L46 | L45 | 1 - 4 |
| 62. E. Meyers | L63 | L32 | L61 | D41 | D55 | 1 - 4 |
| 63. D. Tankersley | W62 | L14 | L37 | L34* | - | 1 - 4 |
| 64. F. Wentworth | L18 | L34 | Bye | L31 | L49 | 1 - 4 |
| 65. R. Eggert | D51 | L15 | - | - | - | ½ - 4½ |
| 66. F. Foley | L17 | L53 | L57 | L60 | L59 | 0 - 5 |
| 67. F. Eiseman | L26 | L50 | L49 | L35* | - | 0 - 5 |

* Forfeit.

CHARLES HENIN SOUTHERN CALIFORNIA LEAGUE OPEN CHAMPION

Charles Henin won easily in the July Open of the Southern California Chess League, held at the San Fernando Valley club in July. Henin finished a full 1½ points ahead of Ben Kakimi and Peter Rhee, who tied for second. Three players qualified for the Tournament of Champions: Kakimi, Rhee, and Robert Bliss.

There were \$350 in guaranteed prizes, with a first prize of \$135 and prizes for second, third, under 2,000, under 1,800, and under 1,600. The tournament director was Arthur Spiller, League tournament director.

SOUTHERN CALIFORNIA LEAGUE OPEN, JULY 1965

| | 1 | 2 | 3 | 4 | 5 | 6 | Score |
|--------------------|-----|-----|-----|-----|------|-----|-------|
| 1. C. Henin | W7 | W14 | W6 | W2 | W3 | W5 | 6 - 0 |
| 2. B. Kakimi | D22 | W23 | W17 | L1 | W18 | W10 | 4½-1½ |
| 3. P. Rhee | W25 | D17 | W8 | W10 | L1 | W6 | 4½-1½ |
| 4. P. Quillen | L6 | W16 | L14 | W15 | W11 | W12 | 4 - 2 |
| 5. R. Bliss | W19 | D8 | D10 | W18 | W7 | L1 | 4 - 2 |
| 6. S. Gruen | W4 | W24 | L1 | W23 | W13 | L3 | 4 - 2 |
| 7. A. Wicher | L1 | W20 | W24 | W8 | L5 | W13 | 4 - 2 |
| 8. L. Harter | W21 | D5 | L3 | L7 | W15 | W19 | 3½-2½ |
| 9. S. Mosby | L24 | D19 | W22 | W17 | L10 | W14 | 3½-2½ |
| 10. H. Rogosin | W12 | W11 | D5 | L3 | W9 | L2 | 3½-2½ |
| 11. M. Fabian | W13 | L10 | L23 | W16 | L4 | W18 | 3 - 3 |
| 12. A. Jiron | L10 | W26 | L13 | W20 | W24* | L4 | 3 - 3 |
| 13. Olson | L11 | W21 | W12 | W14 | L6 | L7 | 3 - 3 |
| 14. P. Perillo | W26 | L1 | W4 | L13 | W23* | L9 | 3 - 3 |
| 15. R. Cortes | L17 | W25 | D16 | L4 | L8 | Bye | 2½-3½ |
| 16. Hall | D18 | L4 | D15 | L11 | W25 | D21 | 2½-3½ |
| 17. R. Neustaedter | W15 | D3 | L2 | L9 | L19 | W20 | 2½-3½ |
| 18. K. Johnson | D16 | W22 | W19 | L5 | L2 | L11 | 2½-3½ |
| 19. H. Rader | L5 | D9 | L18 | W22 | W17 | L8 | 2½-3½ |
| 20. Brady | L23 | L7 | W21 | L12 | W26* | L17 | 2 - 4 |
| 21. J. Kent | L8 | L13 | L20 | W26 | D22 | D16 | 2 - 4 |
| 22. Hall | D2 | L18 | L9 | L19 | D21 | W25 | 2 - 4 |
| 23. J. McDonough | W20 | L2 | W11 | L6 | L14* | - | 2 - 4 |
| 24. G. McMahon | W9 | L6 | L7 | W25 | L12* | - | 2 - 4 |
| 25. C. Fotias | L3 | L15 | W26 | L24 | L16 | L22 | 1 - 5 |
| 26. P. Rogosin | L14 | L12 | L25 | L21 | L20* | - | 0 - 6 |

* Forfeit.

THIRD 1965 SANTA MONICA MASTERS & EXPERTS - ARTHUR SPILLER WINS

Arthur Spiller won the third playing of the Santa Monica masters and experts tournament in 1965. Spiller came from behind to drop Robert Bliss in the last round. First prize was \$100 and the next three players each won \$30. The tournament director was Herbert T. Abel.

THIRD SANTA MONICA MASTERS & EXPERTS, JULY-AUGUST, 1965

| | 1 | 2 | 3 | 4 | 5 | 6 | Score |
|---------------------|-----|------|------|-----|------|------|-------|
| 1. A. Spiller | W16 | W14 | D6 | D3 | W7 | W2 | 5 - 1 |
| 2. R. Bliss | W13 | W5 | W12 | D6 | W3 | L1 | 4½-1½ |
| 3. N. Lessing | W18 | W15 | W7 | D1 | L2 | W6 | 4½-1½ |
| 4. K. Stani | D8 | W20 | L5 | W13 | W15 | W11 | 4½-1½ |
| 5. R. Martin | W10 | L2 | W4 | W9 | L6 | W12* | 4 - 2 |
| 6. S. Parker | W20 | W8 | D1 | D2 | W5 | L3 | 4 - 2 |
| 7. K. Firfaroff | W9 | W12 | L3 | D15 | L1 | W13 | 3½-2½ |
| 8. S. Hohensee | D4 | L6 | W20* | D14 | L11 | W17 | 3 - 3 |
| 9. P. Rhee | L7 | W12* | W10 | L5 | L12 | W15 | 3 - 3 |
| 10. B. Samuelson | L5 | W19 | L9 | L12 | W14 | W16 | 3 - 3 |
| 11. A. Wicher | L15 | D18 | D17 | W16 | W8 | L4 | 3 - 3 |
| 12. E. Wicher | W19 | L7 | L2 | W10 | W9 | L5* | 3 - 3 |
| 13. L. Harter | L2 | W16 | D18 | L4 | W17 | L7 | 2½-3½ |
| 14. F. Leiber | W17 | L1 | L15 | D8 | L10 | W18* | 2½-3½ |
| 15. S. Rains | W11 | L3 | W14 | D1 | L4 | L9 | 2½-3½ |
| 16. R. Edberg | L1 | L13 | W19 | L11 | W18* | L10 | 2 - 4 |
| 17. F. Mortz | L14 | L9* | D11 | W18 | L13 | L8 | 1½-4½ |
| 18. M. Kerllenevich | L3 | D11 | D13 | L17 | L16* | L14* | 1 - 5 |
| 19. G. Gean | L12 | L10 | L16 | - | - | - | 0 - 6 |
| 20. G. Nusbaum | L6 | L4 | L8* | - | - | - | 0 - 6 |

CARROLL CAPPS WINS MECHANICS' INSTITUTE SKITTLES TOURNAMENT

Carroll Capps and Rex Wilcox tied for first place in a summer experiment staged by club director Bill Addison of the Mechanics' Institute. Both players made 5 - 1 scores but Capps had 23 Solkoff points and Wilcox 19½. The tournament was played at 60 moves in 60 minutes.

MECHANICS' INSTITUTE SUMMER SKITTLES TOURNAMENT, 1965

| | 1 | 2 | 3 | 4 | 5 | 6 | Score |
|------------------|-----|-----|-----|-----|-----|-----|-------|
| 1. C. Capps | W18 | W10 | W4 | W9 | D2 | D3 | 5 - 1 |
| 2. R. Wilcox | D17 | W16 | W12 | W8 | D1 | W10 | 5 - 1 |
| 3. D. Sutherland | W15 | L7 | W22 | W6 | W9 | D1 | 4½-1½ |
| 4. A. Wang | W20 | W19 | L1 | W17 | D5 | W7 | 4½-1½ |
| 5. E. Syrett | L22 | W24 | W23 | W7 | D4 | W13 | 4½-1½ |
| 6. D. Nieder | W14 | L8 | W19 | L3 | W12 | W11 | 4 - 2 |
| 7. S. Sloan | W11 | W3 | D17 | L5 | W8 | L4 | 3½-2½ |
| 8. R. Laver | W13 | W6 | D9 | L2 | L7 | W17 | 3½-2½ |

MECHANICS' INSTITUTE SUMMER SKITTLES TOURNAMENT, 1965

| | 1 | 2 | 3 | 4 | 5 | 6 | Score |
|-------------------|-----|-----|-----|------|-----|-----|-------|
| 9. J. Jaffray | W12 | W22 | D8 | L1 | L3 | W16 | 3½-2½ |
| 10. A. Kanamori | W23 | L1 | D11 | W16 | W17 | L2 | 3½-2½ |
| 11. J. Hope | L7 | W15 | D10 | D14 | W18 | L6 | 3 - 3 |
| 12. M. Goodall | L9 | W13 | L2 | W23* | L6 | W20 | 3 - 3 |
| 13. A. Blomquist | L8 | L12 | Bye | W19 | W14 | L5 | 3 - 3 |
| 14. J. Mecorney | L6 | D20 | W21 | D11 | L13 | W18 | 3 - 3 |
| 15. D. Thompson | L3 | L11 | L18 | Bye | W21 | W19 | 3 - 3 |
| 16. R. Trenberth | D21 | L2 | W20 | L10 | W22 | L9 | 2½-3½ |
| 17. R. Hammie | D2 | W21 | D7 | L4 | L10 | L8 | 2 - 4 |
| 18. Dr. B. Gross | L1 | L23 | W15 | W22 | L11 | L14 | 2 - 4 |
| 19. R. McCollough | W24 | L4 | L6 | L13 | W20 | L15 | 2 - 4 |
| 20. H. Duncanson | L4 | D14 | L16 | W21 | L19 | L12 | 1½-4½ |
| 21. N. Johnson | D16 | L17 | L14 | L20 | L15 | Bye | 1½-4½ |
| 22. P. Vayssie | W5 | L9 | - | - | - | - | 1 - 5 |
| 23. R. Eggert | L10 | W18 | L5 | L12* | - | - | 1 - 5 |
| 24. W. Massey | L19 | L5 | - | - | - | - | 0 - 6 |

GAME OF THE MONTH

The California chess scene is currently graced with the presence of two grandmasters and two senior masters, as well as a host of officially rated masters. About two-thirds of this galaxy of chess talent resides and competes in southern California. From all this the reader might legitimately expect to see presented in this column some titanic struggle, such as Benko-Evans, Southern California Open, Santa Monica 1965. Perhaps this struggle resulted in a grandmasterly draw. I don't know. I never got to look at the score of the game.

But there are other games worth publication and examination. There is no doubt of this. There is no doubt that I can get worthy games from tournaments in northern California. There is, unfortunately, no doubt that I can get practically no games at all from southern California. Apparently no games are available from the California Open because this tournament was played at Fresno - and Fresno is closer to southern California than to northern California.

The game of the month for this issue is simply an appeal to the tournament directors of southern California to do their duty by the California State Chess Federation and THE REPORTER and secure games for publication by their official organ. The readers of THE REPORTER and fellow members of the CSCF can expect no less.

William G. Addison

G A M E SCALIFORNIA JUNIOR CHAMPIONSHIP, 1965

DAVID BLOHM Too few players are aware that the player who wins a tournament is the one who makes the fewest mistakes and not the one who makes the greatest number of brilliant moves. Some may criticize David Blohm for employing such conservative openings as the Steinitz, French and Cambridge Springs Defenses and for over-emphasizing the end game as when he adopted the Gruenfeld Defense, but it should be pointed out that this represents a considerably diverse repertory which is in welcome contrast to the overspecialization so prevalent today. David's victory was well deserved.

More natural was 14. Kt-Kt5, P-B5; 15. KtxKt, RxxKt; 16. B-Q2. Black would have a strong attack but White is not without chances.

14. ... PxP
15. B-KKt5 BxB
16. QxB P-K5

At this point Black does not threaten PxKt because of simply BxKt winning the exchange. Nor is KtxB a threat because after KtxKt White threatens Kt-K6. Therefore, White should just defend his QKtP.

17. BxKt? QxB
18. QR-Q1? ...

Game No. 869 - Ruy Lopez

White Black
M. Quinlivan D. Blohm

1. P-K4 P-K4
2. Kt-KB3 Kt-QB3
3. B-Kt5 P-QR3
4. B-R4 P-Q3
5. P-B3 B-Q2
6. O-O P-KKt3
7. P-Q4 P-B3

The book move is B-Kt2. A try at refutation would begin with 8. PxP and/or B-Kt3.

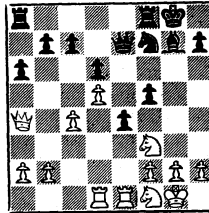
8. QKt-Q2 Kt-R3
9. R-K1 B-Kt2
10. Kt-B1 Kt-B2
11. B-K3 O-O
12. P-Q5 Kt-K2
13. P-B4 ...

Wrong timing. 13. BxB, QxB; 14. Kt(3)-Q2, P-KB4; 15. P-B3 was right.

13. ... P-KB4!?

An excellent alternative was P-QB4! with opportunities on both sides of the board.

14. PxP ...



This provocation is unsound. Black should now play 18...BxP!; with the following 19. Q-Kt3, B-K4; 20. KtxB, KtxKt; 21. QxKtP, KR-Kt1; etc. or 19. R-Kt1, Q-B3; and Black remains a pawn ahead.

18. ... Kt-Kt4?

Black misses the boat and gives White the opportunity to simplify with KtxRt.

19. Kt(3)-Q2? B-K4
20. Kt-KKt3 R-B3
21. Q-Kt3 P-Kt3
22. P-B3 PxP?

Instead 22...P-K6; followed by P-B5 would have won easily.

23. Kt(2)xP KtxKtch
24. QxKt Q-B2

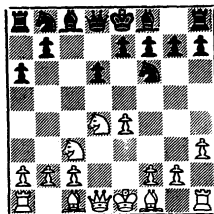
- 25. P-Kt3 K-R1
- 26. Kt-R5 R-Kt3
- 27. Kt-B4 R-Kt5
- 28. Kt-K6? ...

With 28. Kt-Q3 White would have had too chances. After the text he is busted.

- 28. ... QR-KKt1
- 29. R-K2 Q-R4
- 30. R(1)-Q2 QxPch
- 31. K-B2 RxPch
- 32. K-K3 Q-R3ch

JOHN BLACKSTONE In contrast to David Blohm, John Blackstone specialized in the popular Sicilian and King's Indian defenses. While he did not lose any games, he was in hot water more than once as a result of his lack of opening preparation.

In using the Sicilian Defense he had not worked out any answer to the popular modern attack introduced by Weaver Adams and currently favored by Robert Fischer. The line goes: 1.P-K4, P-QB4; 2.Kt-KB3, P-Q3, 3. P-Q4, PxP; 4. KtxP, Kt-KB3; 5. Kt-QB3, P-QR3; 6. P-KR3.



In round 4 against Quinlivan, Blackstone continued in an offhand way with 6...P-K4; 7. Kt-K2, B-K3; 8. P-KKt4, B-K3;(the "liberating" 8...P-Q4; 9. PxP, KtxP; 10. B-Kt2, favors White) 9. P-Kt5, KKt-Q2; and found himself

game with Greg Gean, Blackstone tried 6...P-KKt3; 7. P-KKt4, B-Kt2; 8. P-Kt5, Kt-R4; 9. B-K2 P-K4; 10. Kt-Kt3, Kt-B5; 11. B-Kt4. Gean got a winning end game but missed his way in time trouble and had to settle for a draw. A better plan for Black seems to be 6...P-K3; 7. P-KKt4, P-Q4; as suggested by Evans in MCO.

Blackstone had similar problems with the King's Indian Defense. The root of these problems seems to be one of style; Players who like to conduct the game in an "elephantine" manner (no offense, John!) are very impressive playing White but are apt to get passive positions with Black due to their preference for slowly building up their position. This habit, when facing opponents who are well prepared, is sure to lead to unpleasant experiences.

Below is John Blackstone's best game from this tournament

Game No. 870 - Ruy Lopez

| White | Black |
|---------------|-------------|
| J. Blackstone | S. Hohensee |
| 1. P-K4 | P-K4 |
| 2. Kt-KB3 | Kt-QB3 |
| 3. B-Kt5 | P-QR3 |
| 4. B-R4 | Kt-B3 |
| 5. O-O | P-Q3 |
| 6. Q-K2 | B-Kt5 |

An aggressive move typical of young Hohensee's play. Black could have played for positional advantage with 6...P-QKt4; 7. B-Kt3, Kt-QR4.

| | |
|-----------|------|
| 7. P-B3 | B-K2 |
| 8. BxKtch | |

The standard formula here is 8.
 P-KtR3 and if 8...B-R4 then 9.
 P-Q3 or on 8...B-Q2 then 9. P-Q4.
 8. ... PxB
 9. P-Q4 PxB?

This is the cause of future troubles.
 Kt-Q2 was plainly best since 10. Q-B4,
 Kt-Kt3; 11. QxQBch, B-Q2; 12. Q-Kt7,
 B-QB1; is a draw in hand for Black.

10. PxB 0-0
 11. Kt-B3 Kt-Q2
 12. P-KR3 B-R4?

Black had to try 12...BxKt; 13. PxB,
 (QxB, B-Kt4;) P-QB4; to get some squares
 for his minor pieces.

13. P-KKt4 B-Kt3
 14. B-K3 R-K1
 15. Kt-Q2 Q-Kt1
 16. KR-B1 K-R1

Naturally not 16...QxP; 17. QR-Kt1,
 Q-R6; 18. Kt-B4.

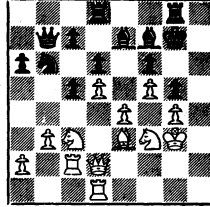
17. P-B4 P-B3
 18. P-B5 ...

White does not permit the shred of activity
 that comes from 18.Q-B4, Kt-Kt3;
 19. QxBP, R-QB1; 20. Kt-K2, B-K1;
 21. Q-B2, P-QB4.

18. ... B-B2
 19. Kt-B3 Q-Kt2
 20. R-B2 QR-Q1
 21. R-Q1 R-B4
 22. P-Q5 P-KKt4?

This makes White's job much easier.
 With 22..Kt-K4; 23. Kt xKt, QPxKt!;
 24. Kt-QR4, P-B3; 25. P-Q6!, BxQP;
 26. BxP, B-B2; 27. P-Kt3 there were
 chances to hold the game. Even 22.
 B-B1 was better than the text.

23. P-KR4 P-R3
 24. K-Kt2 K-Kt2
 25. Q-Q2 R-KKt1
 26. PxB RPxB
 27. K-Kt3 Kt-Kt3
 28. P-Kt3 ...



Another way to keep the bind was 28. Q-Q3, P-B3; 29. R-R2,
 P-B5; 30. Q-Q4, P-B4; 21. Q-Q2.
 The speculation 31.BxP!?, R-KR1,
 32. BxPch, BxB; 33. Q-Q2, is
 not clear.

28. ... Q-B1?

Black could have played P-B3
 here. As things stand he is
 not setting up any targets in
 the White position.

29. Kt-K2! ...

The sacrifice KtxKtP is perfectly
 safe for White but here he
 prepares a second threat-
 P-QKt4 - which is going to
 cause further distortion of
 Black's game in the course of
 defending against this threat.

29. ... QR-K1?

On Kt-Q2 White replies with R
 (1)-QB1 and the treat P-QB4
 hangs even heavier. The only
 move was 29.Kt-R1 after which
 it would have been interesting
 to see which way White would
 chose: P-QKt4 or KtxKtP. Un-
 fortunately, it is too late for
 29...P-B3 as 30.PxB, QxQBP; 31.
 KtxKtP is overwhelming. The
 variations are too long to be
 given here.

30. P-Kt4 Kt-R5
 31. PxB KtxP
 32. BxKt PxB

- 33. P-K5 PxP
- 34. KtxKtP R-Q1
- 35. Kt-QB3 P-B3
- 36. R-KR1

On his 30th move Black could have kept the position closed with P-B5 which would have only cost a pawn. Having decided to lose with an open game he should here be consistent and play 36. BxKt; 37. QxBch, K-B1; 38. Q-R6ch, K-K2; with the threats of QxBP or RXPch for Black. White will win but Black will give him something to think about.

- R-R1
- 37. RxR RxR
- 38. Kt-K6ch BxKt
- 39. QPxB Q-B1
- 40. Kt-K4 Q-QKt1
- 41 P-B6ch RESIGNS

STEVE HOHENSEE...Young Hohensee plays an odd, interesting brand of chess. His style reminds me of players like Bird, Breyer, Ryumin, Simagin and our new talent, Duncan Suttles. Of course style is one thing and strength is another. It should be very interesting to follow Hohensee's play as he develops more strength.

Game No. 871 - Sicilian Defence

| White | Black |
|------------|-------------|
| L. Stevens | S. Hohensee |
| 1. P-K4 | P-QB4 |
| 2. Kt-KB3 | Kt-QB3 |
| 3. P-Q4 | PxP |
| 4. KtxP | Kt-B3 |
| 5. Kt-QB3 | P-Q3 |
| 6. B-KKt5 | P-QR3 |
| 7. B-K2 | Q-R4 |
| 8. BxKt | KtPxP |
| 9. Kt-Kt3 | Q-KKt4 |
| 10. P-Kt3 | B-R6 (!) |

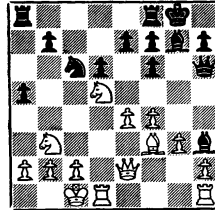
The more routine B-Q2 or P-K3 would have "only" been equal, so Black reaches out for advantage.

- 11. P-B4 Q-Kt3
- 12. B-R5 Q-R3
- On 13. Kt-Q5,0-0-0; 14. BxP,
- B-Kt7; 15. R-Kt1, QxRP; Black
- is on top.

13. B-B3 B-Kt2
 14. Kt-Q5 0-0
 Here the routine 0-0-0 was called for in order to back up a future pawn push in the center.

15. Q-K2 ...
 A logical move was to blunt the Black KB's action on the long diagonal with P-B3. Also to be considered was the positional Pawn sacrifice 15. P-B5, P-K3; 16. Kt-B4 to keep the Black KB out of play for a while.

- 15. ... P-R4
- 16. 0-0-0?



The final mistake. The position might have been held together with P-R4 or P-B3. White has failed to wake up in time to make the game a real contest.

- 16. ... P-B4!
- 17. PxP P-R5
- 18. Kt-Q2 P-R6
- 19. P-Kt3 P-K3!
- 20. PxP PxP
- 21. Kt-K3 Kt-Kt5!

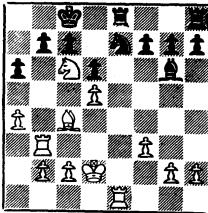
Black shuns trappy lines like 21. Q-R3; 22. Kt(3)-R4,0-Kt7ch;

23. Kt×Q, P×Ktch; 24. K-Kt1, R-RP;
 25. P-B3! or 21...Q-B3; 22. Kt(3)-B4,
 Q-R8ch; 23. Kt-Kt1, B-B6; (threat;
 Q-Kt7ch, KtxQ, P×Kt mate) 24.R-Q3!

22. Kt-K4 P-Q4
 23. Kt-Kt5 Q-B3
 24. P-B3 QxPch
 25. K-Kt1 Q-R8

MATE

GREG GEAN...The most lucky player in the tournament was Greg Gean, who has to be complimented on his tenacity and resourcefulness without which the luck would not have had an opportunity to occur. A good example of the kind of hot water Gean was swimming in occurred in the game Sloan-Gean. Sam Sloan had just played 19. Kt-B6!



The correct defense is 19. P×Kt; with the following: 20. RxKt, RxR; 21. P×P R(2)-K1; 22. BxPch, K-Q1; 23. R-Kt8ch, K-K2; 24. RxRch, RxR; 25. B-Kt7, P-Q4; 26. P-R5, K-Q3; 27. P-R6, P-B3 and White will recover his sacrificed rook while Black will regain the two pawns he lost. The resulting King and Pawn ending is not as simple as it looks but seems to be a draw with best play. Another line is 20. ExPch K-Q2; 21. P×Pch, KtxP; 22. RxR, RxR; 23. B-Kt5, R-K4; 24. P-R5, K-K2; (simplest) 25. ExKt, RxP with equality.

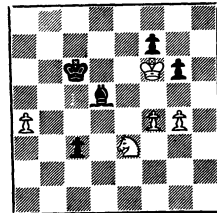
Instead of modestly defending, Gean indulged in some snappy tactics and should have lost.

The game continued:

19. Kt-B6 Kt-B4
 20. R×Rch RxR
 21. Kt-R5 P-Kt4
 22. P×P Kt-Q5
 23. R-Kt4 P×P
 24. B×P KtxQBP
 25. R-QR4 R-K4
 26. B-B6 K-Q1
 27. Kt-B4 R-R4
 28. P-R3 Kt-Q5
 29. R-R8ch K-K2
 30. R-B8 KtxB
 31. P×Kt R-QB4
 32. RxPch K-K3
 33. Kt-K3 P-Q4
 34. P-QKt4 K-Q3
 35. P×Rch KxR

Here White missed a win with 36. K-B3, KxP; 37. K-Q4 followed by KtxP. Instead he played 36. KtxPch, KxP; followed by 37...KxP; and the game was eventually drawn.

An example of rare good luck was the game Saccuzzo-Gean where Gean came from being a pawn behind to reach an ending that had to be adjudicated.



With Roy Hoppe playing Devil's Advocate I adjudicated this position as a win for Black. The decision was a difficult one reached only after a couple of hours' intensive analysis. When I had Gean play the position with me taking White, Gean proceeded to lose with the winning side! Fortunately this has no bearing on the logic of adjudications as the opponent might have collapsed faster than Gean could have thrown the game away.

Below is Greg Gean's best game from the tournament played in the last round. Had Gean won he would have shared first prize with David Blohm and he did come very close to winning it. Better luck next time, Greg!!

Game No. 872 - Sicilian Defense

| White | Black |
|------------|---------------|
| G. Gean | J. Blackstone |
| 1. P-K4 | P-QB4 |
| 2. Kt-KB3 | P-Q3 |
| 3. P-Q4 | PxP |
| 4. KtxP | Kt-KB3 |
| 5. Kt-QB3 | P-QR3 |
| 6. P-KR3 | P-KKt3 |
| 7. P-KKt4 | B-Kt2 |
| 8. P-Kt5 | Kt-KR4 |
| 9. B-K2 | P-K4 |
| 10. Kt-Kt3 | Kt-B5 |
| 11. B-Kt4 | B-K3 |
| 12. BxB | KtxB |

Blackstone said he considered here 12...PxB; 13. BxKt, PxB; 14. Q-Kt4, Q-B1; 15. QxBP; BxKtch; 16. PxB, QxPch; 17. K-B1, but thought it was too wild.

| | |
|-------------|-------|
| 13. Kt-Q5 | Kt-Q2 |
| 14. B-K3 | O-O |
| 15. Q-Q2 | P-B4 |
| 16. PxPe.p. | KtxP |
| 17. KtxKtch | QxKt |
| 18. O-O-O | QR-Q1 |

| | |
|------------|---------|
| 19. Q-Q5! | R-B2 |
| 20. K-Kt1 | Kt-B5 |
| 21. Q-B4 | P-QKt4? |
| 22. Q-B6 | P-Q4 |
| 23. QxQ | RxQ |
| 24. BxKt | RxB |
| 25. PxP | RxBP |
| 26. Kt-B5 | R-QB1 |
| 27. P-QKt4 | B-B1 |
| 28. P-Q6 | R-Q1 |
| 29. Kt-Kt7 | R-Q2 |
| 30. Kt-B5 | ... |

White is getting frisky. If 30.. RxQP; 31. RxR, BxR; 32. Kt-K4 winning. This is pretty sly for a kid whose flag is about to drop.

| | |
|------------|-------|
| 30. ... | R-Q1 |
| 31. Kt-Kt7 | R-QB1 |

Returning the compliment. Now if 32. P-Q7, R(1) xP; with at least a draw.

| | |
|-----------|------|
| 32. Kt-B5 | R-Q1 |
|-----------|------|

DRAWN by repetition of moves.

The following game was won by 13 year old David Louie of San Francisco over 19 year old Richard Hammie of Palo Alto, a rated "A" player. While this game is not going to make anyone fall out of his chair it is good to see an untutored young player practicing sharp, aggressive chess for a change. Too many youngsters play like poorly written encyclopedias of chess.

Game No. 873 - French Defense

| White | Black |
|-----------|-----------|
| D. Louie | R. Hammie |
| 1. P-K4 | P-K3 |
| 2. P-Q4 | P-Q4 |
| 3. PxP | PxP |
| 4. Kt-QB3 | Kt-KB3 |

| | | | |
|--------------|----------|---------------|---------|
| 5. B-KKt5 | B-K2 | 11. QxB | Kt-B4 |
| 6. Kt-B3 | 0-0 | 12. Q-B4 | PxKt |
| 7. B-Q3 | R-K1 | 13. Kt-K4 | PxKtP |
| 8. 0-0 | B-KKt5 | 14. BxP | Q-K2 |
| 9. R-K1 | QKt-Q2 | 15. K-Kt1 | P-B3 |
| 10. P-KR3 | B-R4 | 16. PxP | PxP |
| 11. Q-K2 | P-B4 | 17. R-R3 | K-Kt2 |
| 12. P-KKt4 | PxP | 18. R(1)-R1 | R-R1 |
| 13. BxKt | KtxB | 19. Q-R2 | RxR |
| 14. PxB | PxKt | 20. QxR | R-KKt1 |
| 15. B-Kt5 | PxP | 21. P-Q5 | Kt-K4 |
| 16. QR-Kt1 | B-Kt5 | 22. P-KB4 | Kt-B2 |
| 17. BxR | BxR | 23. Kt-B3 | R-KR1 |
| 18. BxPch! | KxB? | 24. Q-B3 | RxRch |
| 19. Kt-Kt5ch | K-Kt1 | 25. BxR | PxP |
| 20. Q-K6ch | RESIGNS. | 26. Q-B2 | P-B3 |
| | | 27. P-R4 | Q-Kt5 |
| | | 28. Q-Kt2 | QxBP |
| | | 29. Q-K2 | Kt-K4 |
| | | 30. B-Kt2 | Kt-Q5 |
| | | 31. Q-K1 | B-B4 |
| | | 32. K-R2 | BxP |
| | | 33. B-B1 | B-Kt6ch |
| | | 34. K-Kt1 and | |

SAN FRANCISCO AMATEURGame No. 874 - Irregular

| White | Black |
|---------|--------------|
| J. Hurt | R. Trenberth |

- | | |
|-----------|----------|
| 1. P-K4 | P-KKt3 |
| 2. P-Q4 | P-K3 |
| 3. B-K3 | B-Kt2 |
| 4. Kt-QB3 | P-Q4 |
| 5. Q-Q2 | Kt-QB3 |
| 6. Kt-B3 | Kt(1)-K2 |
| 7. 0-0-0 | B-Q2 |
| 8. B-R6 | 0-0 |

Black's first eight moves make up what is known locally as the Trenberth System. This game is presented as an epitome of Amateur Champion Trenberth's play and in order to establish patent rights.

| | |
|----------|-----|
| 9. P-KR4 | PxP |
|----------|-----|

This is an unnecessary concession to White's provocation. Your Editor demonstrated in a number of 5 minute games with Northern California Champion Don Sutherland that Black is not without chances after 9...P-B3.

| | |
|-----------|-----|
| 10. P-R5? | BxB |
|-----------|-----|

White overstepped the time limit.

NORTHERN CALIFORNIA CHAMPIONSHIPGame No. 875 - Sicilian Defense

| White | Black |
|--------------|-----------|
| M. Quinlivan | S. Ockman |

- | | |
|-------------|--------|
| 1. P-K4 | P-QB4 |
| 2. Kt-KB3 | P-Q3 |
| 3. P-Q4 | PxP |
| 4. KtxP | Kt-KB3 |
| 5. Kt-QB3 | P-KKt3 |
| 6. P-B3 | B-Kt2 |
| 7. B-K3 | 0-0 |
| 8. B-QB4 | P-QR3 |
| 9. Q-Q2 | P-QKt4 |
| 10. B-Kt3 | B-Q2 |
| 11. Kt-Q5 | Kt-B3 |
| 12. KtxKt | BxKt |
| 13. B-R6 | BxB |
| 14. KtxKtch | K-Kt2 |
| 15. Kt-R5ch | PxKt |

- 16. Q-B3ch P-B3
- 17. QxB Q-R4ch
- 18. P-B3 QR-B1
- 19. Q-Q7 R-QB2
- 20. Q-B5 R-B4
- 21. B-Q5 B-K6
- 22. K-K2 B-Q5
- 23. Q-K6 KR-B1
- 24. QR-QB1 Q-B2
- 25. PxB R-B7ch
- 26. RxB QxRch
- 27. K-K3 R-B2
- 28. Q-B7ch K-R3
- 29. Q-B8ch K-Kt4
- 30. Q-Kt7ch K-R5
- 31. Q-Kt3 MATE.

- 26. RxB P-B4
- 27. Kt-Q6 QxPch
- RESIGNS.

Game No. 877 - Sicilian Defense

White Black
C. Capps R. Laver

- 1. P-K4 P-QB4
- 2. Kt-QB3 P-Q3
- 3. P-KKt3 Kt-QB3
- 4. B-Kt2 P-KKt3
- 5. KKt-K2 B-Kt2
- 6. 0-0 P-K3
- 7. P-Q3 KKt-K2
- 8. B-K3 0-0
- 9. P-Q4 P-Q4
- 10. KPxB KPxB
- 11. Q-Q2 B-Kt5
- 12. P-KR3 P-K3
- 13. QR-Q1 Kt-B4
- 14. PxP P-Q5
- 15. Q-B1 Q-B1
- 16. BxKt QxB
- 17. BxB KtxB
- 18. KtxKt BxKt
- 19. RxB BxKRP
- 20. Kt-Q5! KR-K1
- 21. R(1)-Q1 R-K4
- 22. Q-R6 B-Kt5
- 23. Q-B4 RxB
- 24. QxB RxB
- 25. R-Q8ch RxB
- 26. RxBch K-Kt2
- 27. Q-Q4ch K-R3
- 28. R-Q6 Q-Kt4
- 29. Q-B4ch K-Kt2
- 30. Q-B6ch K-R3
- 31. QxB R-B4
- 32. R-KB6 R-Q4
- 33. Q-B8ch K-R4
- 34. R-B4 R-Q8ch
- 35. K-R2 Q-K4
- 36. R-R4ch K-Kt4
- 37. P-B4ch RESIGNS.

Game No. 876 - Gruenfeld Defense

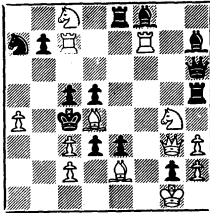
White Black

- J. Hudson F. Thornally
- 1. P-Q4 P-Q4
- 2. Kt-KB3 Kt-KB3
- 3. B-B4 P-KKt3
- 4. P-K3 B-Kt2
- 5. P-B4 0-0
- 6. Kt-B3 P-B4
- 7. QPxP Q-R4
- 8. Q-Kt3 Kt-K5
- 9. R-B1 KtxKt
- 10. PxKt PxP
- 11. BxB QxBP
- 12. Kt-Kt5 Q-B4
- 13. R-Q1 Kt-B3
- 14. P-Kt4 Q-B3
- 15. Kt-K4 Q-R5
- 16. B-K2 BxB
- 17. QxB BxB
- 18. KxB P-K4
- 19. QxB PxP
- 20. R-Q3 QR-K1
- 21. P-B3 R-K3
- 22. Q-B4 KR-K1
- 23. K-Q2 PxPch
- 24. RxB B-R3
- 25. KR-K1 BxRch

TASKS: PROBLEMS ARE NOT MEANT TO BE SOLVED

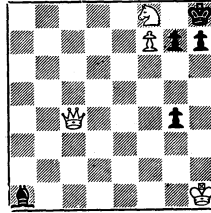
It is a paradox of problem composition that a composer must never forget the solving process (including such things as surprise keys, difficult variations, etc.), but he must not expect the enjoyment of his problems to come from solving them. This does not mean that solving problems cannot be enjoyable, or that some chessplayers will never go beyond this phase.

VINCENT L. EATON



Mate in Three

SAM LOYD



Mate in Three

The real worth of a problem (and hence the enjoyment it is capable of giving) come from the logical relationships of all the variations in it.

One of the first revelations of a student of problems is a composer cannot create a variation simply by showing that white can mate in that way. The black "defense," therefore, contains at least two elements: one which permits white to mate (a "weakening" element), and one which precludes other white mates (a "strengthening" element).

As an introduction, above are two classic examples of problems which are enjoyable to solve -- but more enjoyable to analyze. The key of "A" is 1. Qe5, the intersection (or critical square) of the black rooks. What does this threaten and why? After 1...Rh3 (why does this stop the threat?), 2. Qe7 (why? why not Qd6?) forces mate. In the solution, the Queen must go to e7, f5, and d6, among other things. In "B" -- the "Love Chase" as Loyd named it -- the Queen very rationally stations herself on a square from which she can threaten to simultaneously attack the Bishop and h7, no matter where he goes. Note that if the White King were at a8, 1...Pg3 would not force 2. Sg6ch (its weakening element is the unguard of h3, its strengthening element is the threat to check, preventing 2. Qb1, the threat).