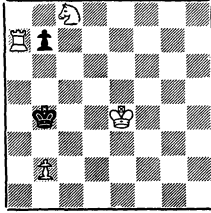


15-

# THE CALIFORNIA CHESS REPORTER

VOLUME XV, NUMBER 4

JANUARY-FEBRUARY, 1966



Mate in Seven

FROM: 244 Kearny Street, 4th Floor  
San Francisco, Calif. 94108

TO:

David Lawson  
111 Montague Street  
Brooklyn, New York 10002



BLUE UNICORNS WIN SAN FRANCISCO BAY AREA TEAM TITLE

The Blue Unicorn team won the 1966 team tournament of the San Francisco Bay Area Chess League by outscoring the Golden Gate team, last year's champions, by three points. After finishing last in 1965 the Unicorns picked up Jim Schmitt from southern California and Earl Pruner and Alan Benson from the University of California 1965 team. With Dave Blohm, California junior champion, Frank Thornally, Max Wilkerson and Walter Dorne from the 1965 lineup, the team had too much power for the rest of the league (particularly since Golden Gate lost such players as Don Sutherland, State Champion, Norris Weaver 1964 co-champion and Carroll Capps).

The rules of play were changed in 1966. The number of players to a team was reduced from 7 to 6 and total points, instead of matches, became the measure of victory. A new team, Chess Friends of Northern California, entered the tournament and a team from Stanford University returned after an absence of a couple of years.

The individual high point prize was won by Alan Benson, with a perfect score of 5-0. Second was Frank Thornally with  $4\frac{1}{2}$ - $\frac{1}{2}$ , while Rex Wilcox and Peter Dahl scored 4-1.

	1	2	3	4	5	6	Points	Matches
1. Blue Unicorns	X	$4\frac{1}{2}$	3	3	5	5	$20\frac{1}{2}$ - $9\frac{1}{2}$	4 - 1
2. Golden Gate	$1\frac{1}{2}$	X	$2\frac{1}{2}$	3	$5\frac{1}{2}$	5	$17\frac{1}{2}$ - $11\frac{1}{2}$	$2\frac{1}{2}$ - $2\frac{1}{2}$
3. Mechanics' Institute	3	$3\frac{1}{2}$	X	3	1	5	$15\frac{1}{2}$ - $14\frac{1}{2}$	3 - 2
4. Stanford	3	2	3	X	3	2	13 - 16	$1\frac{1}{2}$ - $3\frac{1}{2}$
5. Castle	1	$\frac{1}{2}$	5	3	X	3	$12\frac{1}{2}$ - $17\frac{1}{2}$	2 - 3
6. Chess Friends	1	1	1	4	3	X	10 - 20	$1\frac{1}{2}$ - $3\frac{1}{2}$

The match reported on the left, below, was the deciding contest of the team tournament. The other was the most one-sided, and shows the old champions in fine style.

Blue Unicorns	$4\frac{1}{2}$	Golden Gate	$1\frac{1}{2}$	Golden Gate	$5\frac{1}{2}$	Castle	$\frac{1}{2}$
1. E. Pruner	$\frac{1}{2}$	A. Wang	$\frac{1}{2}$	1. R. Currie	$\frac{1}{2}$	R. Burger	$\frac{1}{2}$
2. J. Schmitt	1	H. Gross	0	2. A. Wang	1	N. Falconer	0
3. D. Blohm	0	P. Dahl	1	3. H. Gross	1	C. Stamer	0
4. F. Thornally	1	E. Krestini	0	4. E. Krestini	1	C. Wilson	0
5. M. Wilkerson	1	A. Palmin	0	5. P. Dahl	1	K. Grivainis	0
6. A. Benson	1	C. Huneke	0	6. V. Radaikin	1	W. Hendricks	0

The following matches show the other teams in the San Francisco Bay Area League in action:

Mechanics' Inst.	3½	Golden Gate	2½	Stanford	3	Blue Unicorns	3
1. J. Murray	1	R. Currie	0	1. J. Blackstone	1	E. Pruner	0
2. R. Wilcox	1	A. Wang	0	2. W. Batchelder	½	J. Schmitt	½
3. E. Osburn	0	H. Gross	1	3. I. Pohl	½	D. Blohm	½
4. C. Capps	0	E. Krestini	1	4. E. Syrett	0	F. Thornally	1
5. A. Bourke	½	P. Dahl	½	5. Teslawsky	0	A. Benson	1
6. J. Jaffray	1	D. Nasen	0	6. R. Hammie	1	W. Dorne	0
Castle	5	Mechanic's Inst.	1	Chess Friends	4	Stanford	2
1. R. Burger	1	R. Wilcox	0	1. D. Sutherland	1	J. Dedinsky	0
2. N. Falconer	1	C. Capps	0	2. A. Kanamori	1	I. Pohl	0
3. G. McClain	1	E. Osburn	0	3. J. Smail	0	E. Syrett	1
4. D. Belmont	0	H. Bullwinkell	0	4. Mugnani	1	T. Terman	0
5. C. Wilson	1	S. Sloan	0	5. P. Gray	1	J. Bjork	0
6. W. Hendricks	1	M. Goodall	0	6. forfeit	0	K. Zangerle	1

GROSS, ZEMITIS TIE FOR FIRST IN CASTLE CLUB CHAMPIONSHIP

Henry Gross and Valdemars Zemitis tied for first place in the 1965 Castle Chess Club championship. Both players had one loss and one draw. Gross losing to Zemitis and the latter losing to Burger. The tournament was a close contest right up to the last round, when Zemitis failed to win an adjourned game with Chet Stamer.

Bob Burger, 1964 club champion, was also in contention until near the end, when he lost an important game to Stamer and was held to a draw by Les Talcott. The cross-table:

CASTLE CHESS CLUB, 1965

	1	2	3	4	5	6	7	8	9	10	11	12	Score
1. H. Gross	X	0	½	1	1	1	1	1	1	1	1*	1	9½-1½
2. V. Zemitis	1	X	0	1	1	½	1	1	1	1	1*	1	9½-1½
3. R. Burger	z	1	X	1	½*	0	½	1	1	1	1	1	8½-2½
4. R. Freeman	0	0	0	X	½	1	½	0	1	1	1	1	6 - 5
5. G. McClain	0	0	½*	½	X	½*	½	½	½*	1	1	1	6 - 5
6. C. Stamer	0	½	1	0	½*	X	½	½	0	1	1*	1	6 - 5
7. L. Talcott	0	0	½	½	½	1	X	0	½	1	1	1	5½-5½
8. R. Hultgren	0	0	0	1	½	½	1	X	1	0	0	1	5 - 6
9. E. Lien	0	0	0	0	½*	1	½	0	X	1	1	½	4½-6½
10. C. Wilson	0	0	0	0	0	0	0	1	0	X	1	1	3 - 8
11. P. Traum	F	F	0	0	0	F	0	1	0	0	X	1	2 - 9
12. G. Farly	0	0	0	0	0	0	0	0	½	0	0	X	½-10½

WANG, BOURKE TIE FOR GOLDEN GATE CLUB CHAMPIONSHIP

Arthur Wang of Berkeley and Alan Bourke of San Francisco tied for first place in the annual Golden Gate club championship for 1965. The winners each lost one game and drew two. Bourke defeated Wang and lost to David Blohm. Wang's two draws were with George Farly and Blohm, while Bourke's two draws were with Al Palmin and Frank Thornally. The draw with Thornally was in the last round and cost Bourke the title.

David Blohm and Peter Dahl of San Francisco tied for third place half a point behind the leaders. Blohm is the current State Junior Champion, while Dahl is the Golden Gate Club team captain. Both players had opportunities to win it all, but Blohm lost a game to Dahl and had three draws, while Dahl lost to Wang and Bourke in addition to drawing a game with Henry Gross.

Frank Thornally was fifth with a 7-3 score, Gross was sixth with a 6-4 score, and the other players were pretty well bunched. Five players had 5-5 scores, three had 4½-5½, three had 4-6, and three had 3½-6½. The tournament director was Mike Goodall.

## GOLDEN GATE CHESS CLUB CHAMPIONSHIP, 1965

	1	2	3	4	5	6	7	8	9	10	Score
1. A. Wang	D8	W4	W15	W17	W5	D3	L2	W9	W7	W6	8 - 2
2. A. Bourke	BYE	W16	D7	L3	W15	W12	W1	W4	W6	D5	8 - 2
3. D. Blohm	W14	D15	W10	W2	W6	D1	L4	W16*D5	W13	7½-2½	
4. P. Dahl	W13	L1	W21	W12	W7	D6	W3	L2	W9	W14	7½-2½
5. F. Thornally	W19	W10	L6	W16	L1	W9	W7	W17	D3	D2	7 - 3
6. H. Gross	D20	W8	W5	W7	L3	D4	W16*W12	L2	L1	L1	6 - 4
7. A. Palmin	W12	W17	D2	L6	L4	D15	L5	W11	L1	W8	5 - 5
8. G. Farly	D1	L6	W20	L15	W19	L13	W14	D18	W17*	L7	5 - 5
9. R. Cuneo	L16	L12	BYE	W21	W17	L5	W18	L1	L4	W19	5 - 5
10. C. Wilson	W21	L5	L3	L13	L14	L19	BYE	W20	W15	W18	5 - 5
11. M. Goodall	L15	BYE	L16	W18	L12	L17	W19	L7	W21	W20	5 - 5
12. V. Radaikin	L7	W9	W18*L4	W11	L2	D13	L6	W16* F			4½-5½
13. Dr. B. Gross	L4	W20	L17	W10	L16	W8	D12	L15	BYE	L3	4½-5½
14. R. Freeman	L3	L21	D19	W20	W10	L16	L8	BYE	W18	L4	4½-5½
15. K. Bendit	W11	D3	L1	W8	L2	D7	L17	W13	L10	F	4 - 6
16. M. Wilkerson	W9	L2	W11	L5	W13	W14	L6* L3*	L12*	--		4 - 6
17. A. Kanamori	W18	L7	W13	L1	L9	W11	W15	L5	L8*	L21*	4 - 6
18. C. Schroth	L17	W19	L12*L11	W21	W20	L9	D8	L14	L10		3½-6½
19. G. Lutz	L5	L18	D14	BYE	L8	W10	L11	W21	L20	L9	3½-6½
20. C. Huneke	D6	L13	L8	L14	BYE	L18	W21	L10	W19	L11	3½-6½
21. N. Nielsen	L10	W14	L4	L9	L18	BYE	L20	L19	L11	W17*	3 - 7

WHITTIER CLUB TOURNAMENTS GUADARRAMA, BARNARD THE WINNERS

Hector Guadarrama won the 1965 championship of the Whittier Club by the convincing margin of  $5\frac{1}{2}-1\frac{1}{2}$ , a whole point over the four players who were tied for second with  $4\frac{1}{2}$  points. He even dropped half a point in the last round to Gary Chicoine, but was too far ahead to be caught.

John Kuehn (an unrated dark horse), Chicoine, Bill Hayes and Larry Hoke tied for second,  $4\frac{1}{2}-1\frac{1}{2}$ . There were 24 players in the tournament.

WHITTIER CLUB CHAMPIONSHIP, 1965

	1	2	3	4	5	6	Score
1. H. Guadarrama	W24	W12	W6	W16	W2	D3	$5\frac{1}{2}-1\frac{1}{2}$
2. J. Kuehn	W3	W11	W7	W10	L1	D4	$4\frac{1}{2}-1\frac{1}{2}$
3. G. Chicoine	L2	W17	W14*	W6	W9	D1	$4\frac{1}{2}-1\frac{1}{2}$
4. W. Hayes	L9	W19	W15	W18	W10	D2	$4\frac{1}{2}-1\frac{1}{2}$
5. L. Hoke	L13	W24	D8	W19	W11	W10	$4\frac{1}{2}-1\frac{1}{2}$
6. F. Pye	W8	W16	L1	L3	W18	W9	4 - 2
7. J. Barnard	W19	W18	L2	L9	W14	W8	4 - 2
8. K. Fleshman	L6	W21	D5	W11	W16	L7	$3\frac{1}{2}-2\frac{1}{2}$
9. D. Gosiewski	W4	W13	L10	W7	L3	L6	3 - 3
10. J. Postma	W23	W15	W9	L2	L4	L5	3 - 3
11. R. O'Hara	W20	L2	W12	L8	L5	W19	3 - 3
12. R. Henderson	W22	L1	L11	D15	W17	D13	3 - 3
13. H. Rader	W5	L9	L18	W20	D15	D12	3 - 3
14. J. Thomas	L18	W23	L3*	W22	L7	W20	3 - 3
15. H. Gandara	W21	L10	L4	D12	D13	D16	$2\frac{1}{2}-3\frac{1}{2}$
16. C. Larson	W17	L6	W20	L1	L8	D15	$2\frac{1}{2}-3\frac{1}{2}$
17. G. Gardner	L16	L3	D23	W21	L12	W18	$2\frac{1}{2}-3\frac{1}{2}$
18. T. Knapp	W14	L7	W13	L4	L6	L17	2 - 4
19. C. Bardley	L7	L4	W21	L5	W22	L11	2 - 4
20. E. Brickner Jr.	L11	W22	L16	L13	W23	L14	2 - 4
21. A. Pantaleoni	L15	L8	L19	L17	BYE	W23	2 - 4
22. H. Franzen	L12	L20	W24	L14	L19	BYE	2 - 4
23. N. Lewis	L10	L14	D17	BYE	L20	L21	$1\frac{1}{2}-4\frac{1}{2}$
24. E. Brickner Sr.	L1	L5	L22	-	-	-	0 - 6

John Barnard won the rating tournament held at the Whittier club in January and February. In a close event, Barnard's 6 - 1 score was half a point ahead of club champion Guadarrama's  $5\frac{1}{2}-1\frac{1}{2}$ . The winner allowed two draws, to Guadarrama and Gosiewski. Guadarrama lost a critical game in the third round to Jack Freed, who was tied for third place with Kyril Firfaroff and John Kuehn.

There were 22 players in the rating tournament, among them being Fred and Frank Frilling who were out of tournaments for a time because of illness.

## WHITTIER CLUB RATING TOURNAMENT, JANUARY-FEBRUARY 1966

	1	2	3	4	5	6	7	Score
1. J. Barnard	D18	W15	W11	W5	W3	W4	D2	6 - 1
2. H. Guadarrama	W10	W20	L4	W13	W6	W3	D1	5½-1½
3. K. Firfaroff	W6	W13	W9	W4	L1	L2	W7	5 - 2
4. J. Freed	W7	W22	W2	L3	W8	L1	W12*	5 - 2
5. J. Kuehn	L22	W19	W14	L1	W17	W12	W6	5 - 2
6. R. Tupanjanin	L3	W21	W20	W9	L2	W8	L5	4 - 3
7. H. Rader	L4	L17	W19	W20	W15	W9	L3	4 - 3
8. L. Hoke	L14	W10	W17	W22	L4	L6	W13	4 - 3
9. F. Pye	W19	W14	L3	L6	W13	L7	W17	4 - 3
10. R. Cohan	L2	L8	W21*	L17	W20	W18	D11	3½-3½
11. Fd.Frilling	D15	W16	L1	L14	W18	D17	D10	3½-3½
12. Fk.Frilling	D16	W18	L22	W15	W14	L5	L4*	3½-3½
13. T. Knapp	W8	L9	L5	W11	L12	L14	W20*	3 - 4
14. R. O'Hara	W21	L3	W16	L2	L9	W13	L8	3 - 4
15. C. Larson	D11	L1	W18	L12	L7	D16	W19	3 - 4
16. H. Franzen	D12	L11	L14	L18	W19	D15	W21	3 - 4
17. R. Henderson	L20	W7	L8	W10	L5	D11	L9	2½-4½
18. D. Gosiewski	D1	L12	L15	W16	L11	L10	BYE	2½-4½
19. H. Freed	L9	L5	L7	W21	L16	BYE	L15	2 - 5
20. J. Thomas	W17	L2	L6	L7	L10	W21	L13*	2 - 5
21. G. Gardner	L14	L6	L10*	L19	BYE	L20	L16	1 - 6
22. G. Chicoine	W5	L4	W12	L8	-	-	-	2 - 2

CUNNINGHAM WINS BI-CLUB INVITATIONAL AT MONTEREY PARK

Walt Cunningham of Monterey Park won a strong tournament held at Monterey Park in the winter of 1965-66 by the close score of 5½-1½ over four players with 5-2 scores. Cunningham overcame a loss to Steve Rains in the third round and managed to stay ahead of Saul Yarmak, Sid Rubin, Jerry Hanken and Rains.

Last year's winner Hanken was in contention all the way, but he lost to Rubin in the second round, drew with Benz in the third, and then drew his last-round game while Cunningham was winning. In the next-to-the-last round Yarmak was sitting pretty, but he lost to Hanken. In fact, Yarmak dropped two points in the last two rounds.

Cunningham won the first prize of \$150. Rubin won the Class A prize and the other players with 5 points divided second prize of \$50.

Jurado and Cross evidently won the B Class and C Class prizes. There were 28 players and the tournament director was Bob Gish.

BI-CLUB INVITATIONAL, MONTEREY PARK NOVEMBER 1965 - JANUARY 1966								
	1	2	3	4	5	6	7	Score
1. W. Cunningham	W18	W11	L5	W9	D2	W6	W8	5½-1½
2. S. Yarmak	W24	W13	W6	W5	D1	L4	D3	5 - 2
3. S. Rubin	W14	W4	L7	W10	D6	W17	D2	5 - 2
4. J. Hanken	W16	L3	D14	W12	W9	W2	D7	5 - 2
5. S. Rains	W27	W22	W1	L2	W11	L8	W10	5 - 2
6. B. Kakimi	W12	W23	L2	W13	D3	L1	W14	4½-2½
7. S. Szirmay	W20	L9	W3	L11	W19	W18	D4	4½-2½
8. K. Firfaroff	L10	W15	D18	W25	W14	W5	L1	4½-2½
9. G. Barrett	W19	W7	D10	L1	L4	W12	D17	4 - 3
10. D. Argall	W8	D17	D9	L3	W23	W11	L5	4 - 3
11. E. Barrios	W28	L1	W20	W7	L5	L10	W23	4 - 3
12. S. Jurado	L6	W26	W23	L4	W13	L9	W20	4 - 3
13. N. Hultgren	W25	L2	W21	L6	L12	W19	W18	4 - 3
14. R. Benz	L3	W27	D4	W15	L8	W24*	L6	3½-3½
15. Cross	D17	L8	W22*	L14	L24	BYE	W21	3½-3½
16. D. Rader	L4	L21	W28*	L23	D22	W25	W24	3½-3½
17. R. Syvertsen	D15	D10	D25	D18	W20	L3	D9	3½-3½
18. I. Besen	L1	W24	D8	D17	W25	L7	L13	3 - 4
19. J. Pyle	L9	L20	W27	W22	L7	L13	W26	3 - 4
20. J. Zizda	L7	W19	L11	W21	L17	W22	L12	3 - 4
21. A. Allen	L22	W16	L13	L20	W26	D23	L15	2½-4½
22. Dr. R. Brow	W21	L5	L15*	L19	D16	L20	W27*	2½-4½
23. R. Gish	W26	L6	L12	W16	L10	D21	L11	2½-4½
24. S. Glassberg	L2	L18	W26	D27	W15	L14*	L16	2½-4½
25. D. Young	L13	W28	D17	L8	L18	L16	BYE	2½-4½
26. McGrann	L23	L12	L24	BYE	L21	W27	L19	2 - 5
27. R. Cohan	L5	L14	L19	D24	BYE	L26	L22*	1½-5½
28. Johnson	L11	L25	L16*	-	-	-	-	0 - 7

#### TARJAN WINS KING'S GAMBIT TOURNAMENT AT CITY TERRACE

Thirteen-year-old J. Tarjan walked off with the Spielmann Memorial Gambit Tournament held at the City Terrace Club in February. The young chessplayer from the Valley made a perfect 8-0 score. Tournament director Frank Metz finished second, 1½ points behind.

We see few special events like the gambit tournament nowadays. The tournaments with pre-arranged opening moves used to be very popular, and many of the lines in the opening books came from those tournaments. The gambit tournament is meant to be a romantic affair - an effort to avoid the staleness of modern openings. (Unfortunately, with correct play the



attacking lines peter out, the pieces are exchanged, and the strategy is to play for the end game.) In the City Terrace event, the opening moves were: 1.P-K4, P-K4; 2.P-KB4, PxP; 3. Kt-KB3, P-KKt4.

SPIELMANN MEMORIAL GAMBIT TOURNAMENT, CITY TERRACE CLUB, FEBRUARY 1966

	1	2	3	4	5	6	7	8	Score
1. J. Tarjan	W10	W8	W2	W4	W3	W5	W7	W6	8 - 0
2. F. Metz	W11	W3	L1	W7	W4	W8	D5	W5	6½-1½
3. R. Edberg	W12	L2	W5	W9	L1	D4	W8	W7	5½-2½
4. D. Amneus	W9	W5	W10	L1	L2	D3	D6	W8	5 - 3
5. I. Besen	W6	L4	L3	W10	W11	L1	D2	L2	3½-4½
6. J. Pyle	L5	W12	L9	W8	L7	W11	D4	L1	3½-4½
7. D. Schey	D8	L9	W12	L2	W6	W10	L1	L3	3½-4½
8. A. Ferraz	D7	L1	W11	L6	W10	L2	L3	L4	2½-5½
9. R. Cohan	L4	W7	W6	L3	-	-	-	-	2 - 6
10. F. Sleep	L1	W11	L4	L5	L8	L7	-	-	1 - 7
11. L. Stevens	L2	L10	L8	W12	L5	L6	-	-	1 - 7
12. S. Rubin	L3	L6	L7	L11	-	-	-	-	0 - 8

RONALD GROSS WINS DOWNEY OPEN

Ronnie Gross overtook Jerry Hanken in the last round and won the Downey Open by half a point. The first prize was \$100, and second-third totalled \$90. The cross-table:

DOWNEY OPEN, 1966

	1	2	3	4	5	6	Score
1. R. Gross	W15	W6	D5	W8	W4	W2	5½- ½
2. J. Hanken	W18	W12	W4	W9	W5	L1	5 - 1
3. R. Gish	W27	L4	W12	W15	W9	W7	5 - 1
4. T. Ellis	W22	W3	L2	W6	L1	W15	4 - 2
5. T. Saidi	W17	W7	D1	W16	L2	D8	4 - 2
6. D. Littrell	W20	L1	W17	L4	W13	W12	4 - 2
7. R. Benz	W14	L5	W25	W21	W16*	L3	4 - 2
8. G. Barrett	D16	W13	W23	L1	W18	D5	4 - 2
9. Jones	W13	W22	W21	L2	L3	D10	3½-2½
10. G. Van T'hof	W19	L21	L15	W14	W22	D9	3½-2½
11. W. Thornton	W26	D23	L16	L18*	W19	W20	3½-2½
12. J. Kuehn	W28	L2	L3	W20	W17	L6	3 - 3
13. S. Mosby	L9	L8	W28	W25	L6	W22*	3 - 3
14. D. Orman	L7	L17	W20	L10	W27	W18	3 - 3
15. J. Postma	L1	W19	W10	L3	W21	L4	3 - 3
16. G. Chicoine	D8	W26	W11	L5	L7*	-	2½-3½
17. R. Cohan	L5	W14	L6	D19	L12	W25	2½-3½

## Downey Open, 1966 (Continued)

	1	2	3	4	5	6	Score
18. D. Rader	L2	D28	W24	W11*	L8	L14	2½-3½
19. Wingfield	L10	L15	W27	D17	L11	W24	2½-3½
20. Hoier	L6	W24	L14	L12	W28*	L11	2 - 4
21. J. Mortz	W24	W10	L9	L7	L15	-	2 - 4
22. Naiditch	L4	L9	W26	W28	L10	L13*	2 - 4
23. B. Kakimi	W25	D11	L8	-	-	-	1½-4½
24. L. Mulinex	L21	L20	L18	W26	D25	L19	1½-4½
25. R. Pridonoff	L23	W27*	L7	L13	D24	L17	1½-4½
26. McGrann	L11	L17	L22	L24	BYE	-	1 - 5
27. Roberts	L3	L25*	L19	BYE	L14	-	1 - 5
28. W. Boyko	L12	D18	L13	L22*	L20*	-	½-5½

YEAR-END ELECTIONS CHOOSE CHESS OFFICIALS FOR 1966

As the 1966 chess season in California began, the following persons were selected as leaders:

SOUTHERN CALIFORNIA CHESS LEAGUE

President	Dr. Allen Hendy	(San Bernardino)
Vice-President	Allan Troy	(Oxnard)
Secretary	Neilen Hultgren	(Pasadena)
Treasurer	Robert Corey	(El Segundo)
Tournament Director	Arthur Spiller	(Santa Monica)
Assistant T.D.	Henry Shipin	(El Segundo)
Publicity Director	H. D. Rader	(Los Angeles)

SAN FRANCISCO BAY AREA CHESS LEAGUE

President	Carroll M. Capps	(San Francisco)
Secretary-Treasurer	Russell Freeman	(Oakland)
Tournament Director	Mike Goodall	(San Rafael)

CASTLE CHESS CLUB

President	Robert Burger
Vice-Pres.	Curtis Wilson
Sec.-Treas.	Russell Freeman
Tourn. Dir.	Guthrie McClain

SAN FERNANDO VALLEY CHESS CLUB

President	Paul Perillo
Vice-Pres.	Eugene Berez
Sec.-Treas.	Martin Rubin
Tourn. Dir.	Heino Kurruk

NORTHRIDGE CHESS CLUB

President	Ronald Stein
Vice-Pres.	Ed Wishnow
Secretary	Clyde Piephoff
Treasurer	Harlene Stein
Tourn. Dir.	Howard Steinberg

VERDUGO HILLS SMOKELESS CHESS CLUB

President	Aarno Davidson
Vice-Pres.	Allan Pollard
Secretary	Walter Look
Treasurer	Emil Schauerte

GAME OF THE MONTH

In the International and Historical Rating List published in CHESS LIFE, April 1964, I was amazed to see that the Soviet player Lev Polugaevsky was listed among the top ten players in the world according to our rating system. Since then I have followed his games with interest. Like Petrosian, he loses few games. Polugaevsky's most recent success was in the last Soviet Championship where he finished second. The following game is from that event.

Game No. 903 - English

White	Black
L. Polugaevsky	D. Bronstein
1. P-QB4	Kt-KB3
2. Kt-QB3	P-K3
3. Kt-B3	P-B4
4. P-KKt3	P-QKt3
5. B-Kt2	B-Kt2
6. P-Kt3	B-K2
7. B-Kt2	O-O
8. O-O	P-Q4
9. P-K3	QKt-Q2

Another line is 9...Kt-B3;10. PxP, PxP;11.P-Q4,R-K1;12.R-B1, R-QB1; 13.B-R3,R-Kt1;14.R-K1, PxP;15.PxP,B-Kt5;16.RxRch,QxR; 17.P-R3,B-KB1;18.Q-Q3 as in Botvinnik-Petrosian, 1964 Soviet Team Championship.

10. Q-K2	R-B1
11. P-Q3	PxP
12. QPxP	

On 12.KtPxP,BxKt; 13.BxB,Kt-K4; 14.KR-Q1, KtxBch;15.QxKt,Kt-Q2; Black can simplify in an orderly way.

12.	Kt-K5
-----	-------

Hindsight indicates that this move is the source of future difficulties. White threatened P-K4 and eventually P-K5 which would involve Black in other difficulties.

13. KtxKt	BxKt
14. KR-Q1	Q-B2
15. Kt-K5	KtxKt

16. BxB	B-B3
---------	------

For the next few moves the scene is overshadowed tactically by the small combination BxPch followed by Q-R5ch and capturing on K5 which would net a pawn. Abolishing the threat by P-B4 leads to other difficulties. One example will do: 16...P-B4;17.B-Kt2,QR-Q1;18. P-B4,Kt-B3;19.Q-B3,RxRch;20.RxR, R-Q1;21.RxRch,KtxR;22.P-K4,Q-Q2; 23.PxP,PxP;24.Q-K2 followed by B-Q5.

17. R-Q2	KR-Q1
18. QR-Q1	RxR
19. RxR	Kt-Kt3

The small combination mentioned above would come about should Black play R-Q1 here. An alternative to the text was 19...Kt-Q2; 20.Q-Q1,Kt-B1;21.BxB,PxB;22.R-Q6. White would then try to break through by a carefully timed advance of the King-side Pawns using KKt5 as the breaking point.

20. BxB	PxB
21. BxKt	

The alternative, discussed above, is 21.Q-Q1,Kt-B1. The text is not mere wood chopping. White has in mind a concrete plan of considerable force.

21.	RPxB
22. Q-Q1	Q-B3
23. R-Q7	R-B2

24. R-Q6            Q-K5  
 25. R-Q8ch        K-Kt2  
 26. P-KR4

The immediate Q-Q6 would allow perpetual check so White gives himself an out at R2 and also puts another arrow in his bow.

26.                    Q-B3

27. P-R5

The threat is now 28. P-R6ch, K-R2; 29. R-R8ch, KxR; 30. Q-Q8ch, K-R2; 31. Q-KB8 with mate to follow. Also 28. P-R6ch, KxP; 29. R-R8ch, K-Kt2; 30. Q-Q8, P-B4; 31. R-Kt8ch, K-R2; 32. Q-KB8 and shortly mate. Finally 28. P-R6ch KxP; 29. R-R8ch, K-Kt4; 30. P-B4ch, K-B4; 31. P-Kt4ch, K-K5; 32. R-R3, Q-Q2; 33. Q-B2 ch, Q-Q6; 34. Q-KKt2 Mate.

27.                    R-B1

28. PxP                RxR

29. QxR                Q-K5

Both 29... , KxP; 30. Q-Kt8ch followed by QxBP and 29... , PxP; 30. Q-K7ch with 31. QxBP are out of the question.

30. PxP                Q-Kt8ch

31. K-Kt2              Q-K5ch

32. K-B1                Q-Kt8ch

Too passive was 32... , Q-R8ch; 33. K-K2, Q-R4ch; 34. K-Q2, QxP. White would then force matters by 34. P-R3 threatening P-QKt4.

33. K-K2                QxPch

34. K-B3                KxP

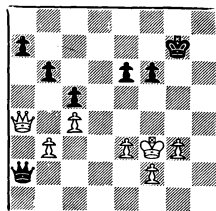
35. Q-Q7ch             Q-Kt3

36. Q-K8ch             K-Kt2

37. Q-R4

Black could now enter an interesting King and Pawn ending with 37... , QxQ; 38. PxQ,

(See diagram.)



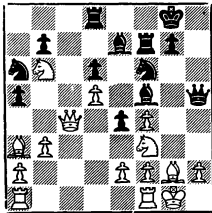
The first phase of this ending is dominated by the following considerations: I. Black's three Pawns on the Queen-side are held by White's two Pawns so that Black will have to sacrifice a Pawn to create a passed pawn. Not only is White's King presently in position to catch the resulting passed Pawn but also White's extra passed pawn will Queen first. II. On the King-side P-KB4 White can threaten in a couple of different ways to create a passed Pawn. This ties down the Black King to the King-side. When P-KKt4 and P-KB4 are achieved with the King at KB3 White will also threaten P-QR5. If this is permitted White walks over to the Queen-side and collects material since when Black follows White diverts with P-KKt5. So the ending might go: (37... , QxQ; 38. PxQ) P-QR4; Black submits to the inevitable and gives his King freedom of maneuver. 39. P-Kt4, K-B2; 40. K-Kt3, K-K2; 41. P-B4, K-B2; 42. P-B5, P-K4; 43. P-Kt5, PxP; 44. K-Kt4, P-Kt4; 45. RPxP, P-R5; 46. P-Kt6, P-R6; 47. P-Kt7, P-R7; 48. P-Kt8(Q), P-R8(Q). In this resulting Queen ending White uses the following factors: I. Threats to win a couple of Pawns and so achieve a won straight Queen ending. 2. Threats to exchange



AMERICAN OPEN 1965

Game No. 904 - Dutch Defense

White	Black
Dr. A. F. Saïdy	T. Weinberger
(Notes by Dr. Saïdy)	
1. P-QB4	P-KB4
2. Kt-KB3	Kt-KB3
3. P-KKt3	P-K3
4. B-Kt2	B-K2
5. O-O	O-O
6. P-Kt3	P-Q3
7. P-Q4	Q-K1
8. Kt-B3	Q-R4?!
9. B-QR3	R-B2
10. Q-B2	P-QR4
11. P-Q5!?	P-K4
12. P-B5	Kt-R3
13. PxP	PxP
14. Kt-QR4	P-B5
15. Kt-Kt6	B-B4
16. Q-B4	R-Q1(?)
17. PxP	P-K5?



Correct is 17...Kt-KKt5!; e.g. I. 18. PxP?, B-Q6!; 19. PxB, RxKt; 20. P-R3, RxRP!; 21. BxR, QxB; 22. Q-B4, PxP!; winning a piece. II. 18. P-R3?, Kt-R3; with strong attacking chances for Black. III. 18. P-K4!, BxP!; 19. QxB, RxP; 20. Q-K2, P-K5!; (not 20... RxKt?; --threatening mate-- 21. P-R3, RxRP; 22. P-B3!, Kt-R3; 23. BxR, QxB; with only two pawns for the Exchange.) 21. P-R3, PxKt; 22. QxB, R-K1! (not 22... QR-KB1; 23. BxQP!, PxB; 24. KxP) 23. QxQP with an unclear

position. I saw all this at move 17.

18. Kt-Kt5	Kt-KKt5
19. P-R3	Kt-K6??
20. PxKt	BxKt
21. PxB	QxKtP
22. RxB	RxR
23. QxP	Kt-B2
24. Kt-B4	RxP
25. Q-B4	P-Kt4
26. KtxRP	Q-Kt3
27. Kt-B6	R-K1
28. R-KB1	Kt-K3
29. Q-K4	QxQ
30. BxQ	R-Q7
31. B-Q3	P-Kt3
32. BxQP	Kt-Kt4
33. Kt-K7ch	K-Kt2
34. P-KR4	K-B2
35. B-Kt4	RxRP
36. BxQKtP	Kt-K4
37. BxR	Resigns

Game No. 905 - Sicilian

White	Black
J. Grefe	P. Lamasney
1. P-K4	P-QB4
2. Kt-KB3	P-KKt3
3. P-Q4	PxP
4. QxP	Kt-KB3
5. P-K5	Kt-B3
6. Q-KB4	Kt-Q4
7. Q-K4	Kt-B2
8. Kt-B3	B-Kt2
9. B-QB4	O-O
10. B-B4	P-Kt3
11. R-Q1	B-Kt2
12. Q-K2	Q-B1
13. O-O	K-R1
14. R-Q2	P-B3
15. KR-Q1	PxP
16. BxP	P-Q3
17. BxBch	KxB
18. Kt-Q5!	Q-Q2
19. KtxKt	QxKt
20. Kt-Kt5	Kt-Q1

21. R-K1!	P-K4	33. Q-K5	R-KR2
22. KR-Q1!	R-B3	34. RxR	BxR
23. RxP	RxR	35. Kt-Q5	Q-B3
24. QxPch	K-R3	36. Q-Kt8ch	Q-B1
25. RxR	QxB	37. Kt-B7ch	K-Q1
26. R-Q7	Q-Kt1	38. KtxRP	RxP
27. Q-B4	Resigns	39. Q-Kt6ch	K-K2
		40. Q-Q6ch	K-K1
		41. Kt-B7ch	K-Q1
		42. Kt-R8	Resigns

The following game won the Best Played Game Prize.

Game No. 906 - Sicilian

White	Black
L. Evans	J. Blackstone
1. P-K4	P-QB4
2. Kt-KB3	P-Q3
3. P-Q4	PxP
4. KtxP	Kt-KB3
5. Kt-QB3	P-QR3
6. B-K2	P-K3
7. P-B4	Q-B2
8. B-B3	B-Q2
9. P-KKt4	P-R3
10. P-Kt5	PxP
11. PxP	Kt-Kt1
12. B-K3	Kt-K2
13. P-KR4	QKt-B3
14. Kt-Kt3	Kt-Kt3
15. P-R5	KKt-K4
16. B-K2	P-Kt4
17. Q-Q2	Kt-B5
18. BxKt	PxB
19. Kt-Q4	Kt-K4
20. Q-Kt2	R-QKt1
21. R-QKt1	Q-R4
22. K-K2	K-Q1
23. Kt-B3	B-B3
24. KtxKt	QxKt
25. Q-B3	R-Kt2
26. B-B4	Q-QB4
27. KR-Q1	R-Q2
28. R-Q2	B-K2
29. QR-Q1	BxKtP
30. BxP	Q-Kt3
31. B-B4	BxB
32. QxB	K-K1

The following game won Second Prize for the Best Played Game.

Game No. 907 - Slav Defense

White	Black
P. Shuey	A. Rankis
1. P-Q4	P-Q4
2. Kt-KB3	Kt-KB3
3. P-B4	P-K3
4. Kt-B3	P-B3
5. B-Kt5	PxP
6. P-K4	P-Kt4
7. P-K5	P-KR3
8. PxKt?	PxB
9. KKtxP	PxP
10. Kt-B3	B-QKt2
11. B-K2	P-R3
12. O-O	Kt-Q2
13. Kt-K1?	Q-B2
14. P-KR3	O-O-O
15. B-B3	P-KB4
16. P-QR4	P-Kt5
17. Kt-Kt1	P-R4
18. Kt-Q2	Kt-Kt3
19. Q-K2	RxQP
20. Kt-B2	QR-R5
21. Kt-K3	B-B4
22. Kt(K)xQBP	KtxKt
23. KtxKt	R-Kt1
24. K-R1	Q-B5
25. QR-B1	B-R3
26. P-QKt3	Q-R3
27. Kt-Q6ch	K-Kt1
28. Q-K5	RxRch
	Resigns

CALIFORNIA CHAMPIONSHIP, 1965

Game No. 908 - Sicilian

White	Black
D. Sutherland	A. Spiller
(Notes by Eric Osbun)	

- |           |       |
|-----------|-------|
| 1. P-K4   | P-QB4 |
| 2. Kt-QB3 | P-Q3  |

This move lacks the flexibility of 2...Kt-QB3; . Two interesting and perhaps stronger - paths eliminated by 2...P-Q3; are: (1)2...Kt-QB3; 3.P-B4,P-K3;4.Kt-B3,P-Q4; and (2) 2...Kt-QB3; 3.P-B4,P-KKt3;4.Kt-B3, B-Kt2;5.B-Kt5,Kt-Q5;.

- |          |        |
|----------|--------|
| 3. P-B4  | Kt-QB3 |
| 4. B-Kt5 | Kt-B3  |
| 5. Kt-B3 | P-KKt3 |
| 6. 0-0   | B-Q2   |

Black decides to avoid the doubled Pawn. However, this plan requires two extra moves of the Queen Bishop which do not make counterplay against White's thematic King-side buildup. Passive defense by 6... B-Kt2;7.P-Q3,0-0;8.BxKt,PxB;9.Q-K1, Kt-K1;10.Q-R4,P-B4;11.Kt-KKt5,Kt-B3; 12.K-R1,(12.P-K5?,PxP;13.PxP, Q-Q5ch;14.QxQ,PxQ;15.PxKt,PxP; is satisfactory for Black). P-KR3;13. Kt-B3 apparently favors White.

Probably best is 6...B-Kt2;7.P-Q3, B-Kt5!;8.Q-K1, BxKt;9.RxB,Kt-Q2!; 10.BxKt,PxB; and 11. P-B5, can be met with 11...Kt-K4;12.R-R3,P-K3; with at least better defensive resources than in the game. White maintains a problematic positional advantage with 11.P-QKt3,0-0;12. B-Kt2; however.

- |            |        |
|------------|--------|
| 7. P-Q3    | B-Kt2  |
| 8. Q-K1    | 0-0    |
| 9. BxKt    | BxB    |
| 10. Q-R4   | P-QKt4 |
| 11. P-KKt4 | P-Kt5  |

- |           |      |
|-----------|------|
| 12. Kt-K2 | P-B5 |
|-----------|------|

Likely the only counterchance against the impending mating attack, but now White will control his Q4.

- |          |      |
|----------|------|
| 13. B-K3 | Q-B1 |
|----------|------|

Too slow; but after the stronger 13...PxP;14.PxP,B-Kt4;15.0R-Q1, Q-R4; (15...KtxKP?;16.Kt(3)-Q4 wins) 16.Kt(3)-Q4,B-Q2;17.P-B5, White maintains his great advantage. (17...QxRP; 18.R-R1, QxP;19.R(B)-Kt1, wins the Queen).

- |           |       |
|-----------|-------|
| 14. P-B5  | PxQP  |
| 15. PxQP  | B-Kt4 |
| 16. Kt-B4 | Q-R3  |
| 17. P-Kt5 |       |

Crushing, for if 11...Kt-K1;12. Kt-Q5,Q-Kt2;13.P-B6, wins a piece

- |            |      |
|------------|------|
| 17.        | BxP  |
| 18. PxKt   | BxBP |
| 19. Kt-Kt5 | BxKt |
| 20. QxB    | BxP  |

Black sees that 20...BxR; 21.RxB Q-B5;22.P-B6,PxP;23.QxP,or 22... QxKP;23.Kt-Q5, is hopeless so he takes a desperate throw.

- |             |         |
|-------------|---------|
| 21. P-B6    | PxP     |
| 22. QxP     | KR-K1   |
| 23. B-Q4    | K-B1    |
| 24. Kt-K6ch | Resigns |

Game No. 909 - Queen's Indian

White	Black
-------	-------

<u>Z. Kovacs</u>	<u>D. Blohm</u>
------------------	-----------------

(Notes by E. Osbun)

- |           |        |
|-----------|--------|
| 1. P-Q4   | Kt-KB3 |
| 2. P-QB4  | P-K3   |
| 3. P-QR3  | P-QKt3 |
| 4. Kt-QB3 | B-Kt2  |
| 5. B-Kt5  |        |

White obtains a negative opening result with this idea. Petrosian-Smyslov, 28th USSR Champ., Moscow 1961 avoided this development of the QB.



- |          |      |                                   |
|----------|------|-----------------------------------|
| 5.       | B-K2 | 22. Q-Kt4                         |
| 6. Q-B2  | P-B4 | Even stronger in my opinion would |
| 7. P-K3  | O-O  | be 22.Q-R5, accelerating the      |
| 8. Kt-B3 | P-Q4 | attack on KB7.                    |
| 9. B PxP | KtxP | 22. PxB                           |
| 10. BxB  | QxB  | 23. PxP                           |
| 11. B-Q3 |      | 24. P-Q6?                         |
- White cannot play 11.KtxKt, PxKt; 12.PxP?, PxP; 13.B-K2, because of 13...P-Q5.
11. KtxKt
- Is 11...P-KR3 correct?
12. PxKt
- If 12.BxPch, K-R1; 13.P any, P-Kt3; 14.BxP, PxB; 15.QxP, Kt-Q2; wins for Black.
- |           |       |
|-----------|-------|
| 12.       | P-KR3 |
| 13. O-O   | Kt-B3 |
| 14. KR-Q1 | KR-Q1 |
| 15. B-K4  |       |
- Hoping for simplification and a draw; but is this correct judgement? 15.B-K2 deserves consideration.
- |          |       |
|----------|-------|
| 15.      | QR-B1 |
| 16. Q-K2 | PxP   |
- Releases the tension too soon. Stronger is 16...Kt-R4; 17.BxB, QxB; 18.P-K4, Q-K2!; which keeps White guessing.
- |           |       |
|-----------|-------|
| 17. B PxP | Kt-R4 |
| 18. BxB   |       |
- Kovacs offered a draw.
- |           |     |
|-----------|-----|
| 18.       | QxB |
| 19. Kt-K5 |     |
- Instead 19.QR-B1 is prudent.
- |          |      |
|----------|------|
| 19.      | R-B6 |
| 20. P-K4 |      |
- A gamble is a compromised situation.
- |     |           |
|-----|-----------|
| 20. | R(1)-QB1? |
|-----|-----------|
- Better is 20...Q-B2; preventing P-Q5 and tightening his grip on the only open file.
- |          |      |
|----------|------|
| 21. P-Q5 | R-B7 |
|----------|------|
- Necessary is 24.QR-Kt1. Best for both sides appears to be 24...Kt-Q7; 25.P-Q6, KtxR; 26.P-Q7, R-Q1; 27.Q-B5, (27.KtxP?, QxQP!; or 27.RxKt, Q-Q4; wins for Black,) RxP!; (27...R-Q7?; 28.QxPch, draws at the very least, or 27...Q-Q4?; 28.QxR, probably wins for White) 28.KtxR, (28.QxR(2)?, KtxP; 29.RxR, QxR!; wins for Black.) R-Q7!; (28...Q-B2?; 29.Q-K4!, R-B8; 30.Q-K8ch, K-R2; 31.Kt-B8ch draws. The purpose of 28...R-Q7 is to thwart the threat of 29.Kt-B6ch, PxKt; 30.R-Q8ch Winning for White. 29.Kt-B6ch, PxKt; 30.QxKt, Q-Q2; 31.RxR, QxR; with Black on top, although White is not without an outside chance for the draw.
- |          |      |
|----------|------|
| 24.      | KtxR |
| 25. P-Q7 | R-Q1 |
| 26. Q-B5 | Q-Q4 |
- Overlooked by White.
- |          |      |
|----------|------|
| 27. QxR  | QxKt |
| 28. Q-B8 |      |
- Relatively best is 28.Q-Kt1, Q-K2; 29. Q-Q3; Kt-Kt6; 30.QxKt, RxP; 31.RxR, QxR; but Black must win.
- |            |       |
|------------|-------|
| 28.        | Q-K2  |
| 29. RxKt   | QxQP  |
| 30. QxQ    | RxQ   |
| 31. P-Kt3  | K-R2  |
| 32. K-Kt2  | K-Kt3 |
| 33. P-KR4  | P-Kt4 |
| 34. R-QKt1 | R-Kt2 |
| 35. K-B3   | P-QR4 |
| 36. K-K3   | P-Kt5 |
| 37. P-R4?  | P-Kt6 |

More effecient is 37...,R-B2;but the text is sufficient.

- 38. K-Q3           K-B4
- 39. K-B3           K-Kt5
- 40. RxP           RxRch
- 41. KxR           K-B6
- 42. K-B4           KxP
- 43. P-Kt4         K-Kt6
- 44. P-Kt5         KxP
- 45. PxP           PxP
- Resigns

Game No. 910 - Guenfeld Defense

White	Black
A. Spiller	B. Maillard

(Notes by A. Spiller)

- 1. P-Q4           Kt-KB3
- 2. P-QB4         P-KKt3
- 3. Kt-QB3        P-Q4
- 4. PxP           KtxP
- 5. P-K4

My favorite line.

- 5.                KtxKt
- 6. PxKt          B-Kt2
- 7. B-QB4         0-0
- 8. Kt-K2         Kt-B3

One of the recent systems-Pieces before pawns.

- 9. B-K3           Kt-R4
- 10. B-Q3          P-Kt3
- 11. 0-0           Q-Q2
- 12. Q-Q2          R-Q1
- 13. QR-Q1

Overprotecting Q4 and also getting the Rook off the long diagonal.

- 13.               B-Kt2
- 14. B-KR6

Intending if B-R1 to play P-KB4-KB5 and Black's Rook cannot go to KB1.

- 14.               P-QB4
- 15. BxB           KxB
- 16. P-Q5

Threatening P-QB4.

- 16.               P-B5

17. BxP

Also good is 17.B-B2 and P-KB4-5 and Kt-Q4. If 17...,P-K3;18.Q-Q4ch and 19.PxP.

- 17.               KtxB
- 18. Q-Q4ch       P-K4

To keep the White Knight out of Q4 and KB4.

- 19. QxKt           QR-B1
- 20. Q-Kt3

Not 20.Q-Q3,Q-R5; with advantage to Black.

- 20.               B-R3
- 21. KR-K1         R-B4
- 22. Kt-Kt3        KR-QB1
- 23. R-K3          B-B5

Black is threatening to win back one or even two pawns.

- 24. Q-B2          R-R4
- 25. R-R1          Q-Kt4
- 26. P-KR4

If 26.Q-Q2,RxP; 27.RxR,Q-Kt8ch, etc.

- 26.               R-R6
- 27. Q-Q2          Q-R4
- 28. R-B3

Unclear is 28.Kt-B5ch,PxKt;29. R-Kt3ch but after the text Black is lost.

- 28.               P-B3

Best is 28...,P-KR3;29.P-R5. On 29.Kt-B5 or R5ch?,PxKt;30.R-Kt3ch, K-R2; and the White Queen can't get in for checks. Continuing 29. P-R5,RxP; 30.RxR,QxR;31.RxPch!! KxR;32.QxP,R-KKt1;33.Q-R7ch,K-B1; 34.PxP and wins.

- 29. Kt-R5ch       PxKt
- 30. R-Kt3ch       K-B2
- 31. Q-R6          K-K2

On 31. R-KB1, 32. R-Kt7ch,K-K1 R-QB7.

- 32. R-Kt7ch       Resigns

Game No. 911 - Dutch Defense

White	Black
A. Spiller	G. Pickler

1. P-Q4	P-KB4
2. P-K4	PxP
3. Kt-QB3	Kt-KB3
4. B-KKt5	P-K3
5. KtxP	B-K2
6. BxKt	BxB
7. Kt-KB3	P-Q4
8. KtxBch	QxKt

Much better is PxKt to guard the weak K4 square with a pawn.

9. Q-Q2	Kt-B3
---------	-------

It is hard to suggest remedies for Black's weak position but on no account must he let his Knight be exchanged for White's Bishop. Now White can play 10.B-Kt5,B-Q2; 11.BxKt,BxB;12.Kt-K5,with a text book bind that is decisive.

10. 0-0-0	B-Q2
11. B-Kt5	0-0-0
12. KR-K1	KR-K1
13. R-K3	Kt-Kt1
14. B-B1	R-K2
15. Kt-K5	Q-R3
16. P-KR3	B-K1
17. Kt-Kt4	Q-Kt4
18. R(1)-K1	R-Q3
19. P-KKt3	P-KR3
20. P-KB4	Q-B4
21. Kt-K5	Kt-B3
22. P-KR4	KtxKt
23. RxxKt	Q-Kt3
24. Q-K3	B-B2
25. P-B5	Q-B3
26. B-Kt2	K-Q2
27. P-B4	PxP
28. P-Q5	B-R4
29. QPxPch	K-B1
30. QxRP	P-B3
31. R-Kt5	R(3)xP

32. Q-R8ch	K-B2
33. QxPch	K-Q3
34. QxP MATE	

Game No. 912 - French

White	Black
D. Blohm	B. Maillard

1. P-K4	P-K3
2. P-Q4	P-Q4
3. P-K5	P-QB4
4. Q-Kt4	Kt-QB3
5. Kt-KB3	KtxQP
6. KtxKt	PxKt
7. B-Q3	P-B4
8. Q-Kt3	Kt-K2
9. Kt-Q2	Kt-B3
10. 0-0	Q-B2
11. Kt-B3	B-B4
12. P-QR3	P-QR3
13. P-Kt4	B-R2
14. R-K1	0-0
15. Kt-Kt5	B-Kt1
16. P-KB4	Q-K2
17. Q-R3	P-KR3
18. Kt-B3	B-Q2
19. P-Kt4	PxP
20. QxKtP	Q-B2
21. K-R1	Kt-K2
22. R-KKt1	B-R2
23. Q-R3	B-Kt4
24. Kt-Kt5	BxB
25. KtxQ	B-K5ch
26. R-Kt2	KxxKt
27. Q-Kt4	QR-B1
28. R-R2	Kt-B4
29. P-R3	R-B6
30. K-R2	R(1)-B1
31. B-Q2	RxBP
32. RxxR	RxxR
33. P-Kt5	BxxR
34. QxB	Kt-K6
35. Q-B3	RxBch
36. K-R1	R-KKt7

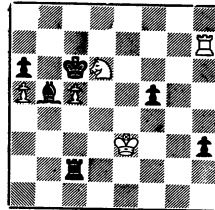
- |             |           |               |          |
|-------------|-----------|---------------|----------|
| 37. P-B5    | P-Q6      | 26. B-R5      | Q-Q2     |
| 38. Q-R5ch  | K-K2      | 27. B-Kt6     | R-B1     |
| 39. Q-R4ch  | K-Q2      | 28. B-Q2      | B-B2     |
| 40. Q-R4    | K-K2      | 29. P-K5      | Kt(1)-K2 |
| 41. PxRP    | P-Q7      | 30. R-Kt2     | KtxB     |
| 42. Q-Kt4ch | K-K1      | 31. QxKt      | R-KKt1   |
| 43. Q-R4ch  | K-B1      | 32. R(1)-KKt1 | P-R3     |
| 44. PxKtP   | P-Q8(Q)ch | 33. B-K1      | B-Q1     |
| 45. QxQ     | KtxQ      | 34. Q-R5      | Q-Q4     |
| 46. KxR     | PxP       | 35. P-R3      | P-B5     |
| 47. K-B3    | P-Kt4     | 36. K-R2      | Q-Q2     |
| 48. K-K2    | Kt-Kt7    | 37. R-Kt6     | K-R2     |
| 49. K-Q2    | Kt-B5ch   | 38. Q-K2      | Kt-K2    |
| 50. K-B3    | Kt-R4     | 39. R-Kt2     | Kt-Q4    |
- Resigns

Game No. 913 - Sicilian

- | White        | Black     |           |       |
|--------------|-----------|-----------|-------|
| I. Pohl      | Z. Kovacs | 40. B-Q2  | P-B6  |
|              |           | 41. PxP   | PxP   |
|              |           | 42. B-B1  | B-Kt3 |
|              |           | 43. R-B1  | B-B4  |
|              |           | 44. Q-R5  | P-Kt3 |
|              |           | 45. Q-K2  | Q-K2  |
| 1. P-K4      | P-QB4     | 46. P-Q4  | BxQP  |
| 2. P-KB4     | P-Q3      | 47. P-QR4 | P-Kt5 |
| 3. Kt-KB3    | Kt-QB3    | 48. QxP   | B-K6  |
| 4. B-K2      | Kt-KB3    | 49. Q-Q6  | Q-K1  |
| 5. P-Q3      | P-K3      | 50. R-Kt3 | BxB   |
| 6. 0-0       | B-K2      | 51. RxB   | KtxP  |
| 7. K-R1      | 0-0       | 52. R-QR1 | P-Kt4 |
| 8. Q-K1      | P-Q4      | 53. QxKtP | Kt-Q4 |
| 9. Kt-B3     | P-Q5      | 54. Q-Kt5 |       |
| 10. Kt-Q1    | Kt-QKt5   |           |       |
| 11. Q-Q2     | B-Q2      |           | Drawn |
| 12. P-QR3    | Kt-B3     |           |       |
| 13. Kt-B2    | R-B1      |           |       |
| 14. P-KKt4   | K-R1      |           |       |
| 15. P-Kt5    | Kt-KKt1   |           |       |
| 16. R-KKt1   | P-Kt4     |           |       |
| 17. Kt-Kt4   | P-B3      |           |       |
| 18. Q-K1     | B-K1      |           |       |
| 19. Q-Kt3    | P-B4      |           |       |
| 20. Kt(4)-K5 | B-Q3      |           |       |
| 21. P-Kt6    | P-KR3     |           |       |
| 22. Kt-Kt5   | Q-K2      |           |       |
| 23. KKt-B7ch | BxKt      |           |       |
| 24. KtxBch   | RxKt      |           |       |
| 25. PxR      | QxP       |           |       |

White to move and win:

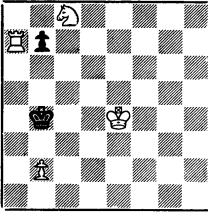
46. Kt-Kt4 ch!?!? (Radaikin-Rubin, American Open 1965)



TASKS

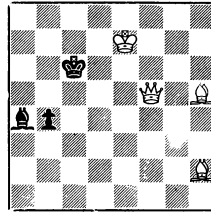
Werner Speckman in No. 245 renders an echo from an old problem. In No. 246, the Queen sacrifice and model mates occur in parallel lines.

No. 245  
W. Speckman  
U.S. Problem Bulletin 1966



Mate in Seven

No. 246  
W. Shinkman  
Dubuque Chess Journal 1890



Mate in Three