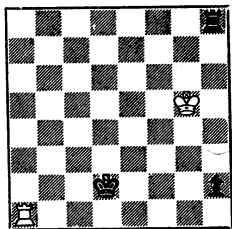


# THE CALIFORNIA CHESS REPORTER

MAY - JUNE, 1968

VOLUME XVII, NUMBER 6



White to Play and Draw

FROM: 244 Kearny Street, 4th Floor  
San Francisco, Calif. 94108

TO:

TOURNAMENT ANNOUNCEMENTS

AMERICAN OPEN

November 28 - December 1, 1968  
Hotel Miramar, Santa Monica

Entry Fee: \$25 Seniors; \$17.50 Juniors, \$12.50 Juniors  
under 18. (Advance Registration \$20, \$15, & \$10)

Guaranteed Prizes: First \$600; Second, Third, Fourth, Class Prizes  
for a guaranteed total of \$2,400.

Two rounds per day November 28 through December 1.

Tournament Director: Andy Kempner, 1025 Ocean Ave., Santa Monica.

NORTHERN CALIFORNIA CHAMPIONSHIP

(Qualifies one player to State Championship finals)  
November 30 - December 1, 1968

Mechanics' Institute Chess Room  
57 Post Street, Fourth Floor  
San Francisco

Entry Fee: \$10 in advance of November 30; \$12 thereafter.

Guaranteed Prizes: First \$100 plus \$50 entry fee in State Finals;  
Second, Third, and Class Prizes: Guaranteed  
total \$400.

First round 10:00 am Saturday, November 30. Three rounds  
Saturday, two rounds Sunday.

Tournament Director: Mike Goodall.

USCF and CSCF membership required.

# THE CALIFORNIA CHESS REPORTER

Vol. XVII No. 6

\$2 per year

May-June, 1968

THE CALIFORNIA CHESS REPORTER, 244 Kearny Street, San Francisco 94108

Published Bi-monthly

Official Organ of the California State Chess Federation

Editor: Guthrie McClain

Associate Editors: Gordon S. Barrett, Los Angeles; Dr. Mark W. Eudey, Atherton;

Neil T. Austin, Sacramento; Irving Rivise, Los Angeles

Games Editor: Robert E. Burger

Guest Annotator: Intl. Master Imre Konig

Reporter Tasks: Robert E. Burger

Second-class postage paid at San Francisco, California

## CONTENTS

North vs. South Team Match . . . . .	98	West Coast Open . . . . .	106-108
San Bernardino Open . . . . .	99-100	Game of the Month . . . . .	108-109
Galbreth Open . . . . .	100-102	Games . . . . .	110-111
Experts Candidates . . . . .	102-105	Tasks . . . . .	112

## NORTH DEFEATS SOUTH, 21-9

The Northern California team defeated an undermanned team from Southern California at the annual Memorial Day match, held on June 2nd at the Hacienda Motel in Fresno. It was the 35th annual staging of the blue-ribbon classic of the California chess world.

The teams were unusually weak this year. The South, particularly, had numerous rookies in the lineup, and there were no less than eight youngsters playing the bottom boards who lost their games in less than half an hour. The Statistical Report by W. C. Jonas will appear in our next issue.

On Saturday, June 1st, the California Speed Championship was won by John Blackstone, who scored 6-0 in the finals. Blackstone scored 11-1 in the preliminaries, losing only to J. Rowell. Irving Rivise was second in the finals, 5-1, after scoring 9-3 earlier. There were 25 contestants, who were divided into two preliminary sections.

The annual business meeting of the CSCF was held on Saturday night. The minutes of the meeting will be published in our next issue.

NORTHERN CALIFORNIA 21, SOUTHERN CALIFORNIA 9

The 35th playing of the North-South Match reminds us of a notice in a bar we know: "Tomorrow has been cancelled due to lack of interest." The 1968 match was not cancelled, but there was a great lack of interest.

Of the multitude of masters, experts and Class A players who could have participated, only a handful came to Fresno. Whether the disappointing turnout was due to the location, or to the great number of tournaments with cash prizes which seem to compete with the match, or to some other reason is being investigated by the GSCF. A questionnaire will be sent out shortly to members as a part of the investigation.

<u>NORTHERN CALIFORNIA</u>		<u>SOUTHERN CALIFORNIA</u>	
1. R. Burger	$\frac{1}{2}$	J. Lazos	$\frac{1}{2}$
2. J. Blackstone	$\frac{1}{2}$	E. Pruner	$\frac{1}{2}$
3. H. Gross	$\frac{1}{2}$	I. Rivise	$\frac{1}{2}$
4. B. Lainson	0	S. Almgren	1
5. P. Smith	$\frac{1}{2}$	L. Standers	$\frac{1}{2}$
6. Dr. F. Ruys	0	N. Hultgren	1
7. O. Bender	0	D. Benge	1
8. J. Cortheil	$\frac{1}{2}$	G. Barrett	$\frac{1}{2}$
9. R. Baker	1	A. Gates	0
10. C. Wilson	0	W. Stellmacher	1
11. G. Rasmussen	1	E. Shields	0
12. Dr. R. Hultgren	1	A. Baker	0
13. R. Wrany	1	C. Fotias	0
14. F. Kimball	1	J. Nanassy	0
15. S. Van Gelder	1	A. Jones	0
16. E. Mueller	0	D. Quarve	1
17. W. Adams	1	L. Goodacre	0
18. C. Smith	$\frac{1}{2}$	H. Wingfield	$\frac{1}{2}$
19. D. Tiffin	1	J. Newsom	0
20. G. Oakes	1	M. Mills	0
21. J. Rowell	0	W. Van Gelder	1
22. F. Olvera	1	A. Brethen	0
23. F. Christensen	1	F. Willis	0
24. E. Schnoor	1	D. Keeler	0
25. R. Walker	1	M. Fitzmorris	0
26. M. Rivera	1	E. Garrett	0
27. V. Pope	1	R. Bendel	0
28. C. Himes	1	M. Leonard	0
29. Mrs. Smith	1	I. Nanassy	0
30. W. Stuart	1	E. Van Gelder	0

WEINBERGER, RHEE TIE FOR FIRST IN SAN BERNARDINO OPEN

Tibor Weinberger and Peter Rhee won five games and drew with one another to score  $5\frac{1}{2}-\frac{1}{2}$  in the annual San Bernardino Open, but Weinberger had 16 tie-breaking points to 15 for Rhee and so was declared champion.

SAN BERNARDINO OPEN, MAY 3-5, 1968

	1	2	3	4	5	6	Score
1. T. Weinberger	W41	W28	D2	W8	W5	W4	$5\frac{1}{2}-\frac{1}{2}$
2. P. Rhee	W6	W36	D1	W20	W25	W10	$5\frac{1}{2}-\frac{1}{2}$
3. M. Leidner	W47	W12	D18	D10	W14	W9	5 - 1
4. J. Tarjan	W58	W24	W27	D5	W7	L1	$4\frac{1}{2}-1\frac{1}{2}$
5. S. Yarmak	W51	W15	W38	D4	L1	W18	$4\frac{1}{2}-1\frac{1}{2}$
6. S. Skrypzak	L2	W49	W24	W27	D17	W20	$4\frac{1}{2}-1\frac{1}{2}$
7. W. Bragg	D46	W32	W13	W25	L4	W22	$4\frac{1}{2}-1\frac{1}{2}$
8. S. Rubin	W60	W16	D10	L1	W21	D11	4 - 2
9. C. Batchelder	W30	D13	W22	D18	W12	L3	4 - 2
10. T. Devine	W59	W26	D8	D3	W29	L2	4 - 2
11. F. Flores	W37	W14	L25	W15	D18	D8	4 - 2
12. M. Thomason	W35	L3	W43	W16	L9	W25	4 - 2
13. C. Yergin	W44	D9	L7	W31	D26	W29	4 - 2
14. F. Fornoff	W55	L11	W40	W7	L3	W27	4 - 2
15. J. Levin	W50	L5	W44	L11	W30	W26	4 - 2
16. D. Cotten	W48	L8	W50	L12	W43	W28	4 - 2
17. L. Harter	L43	W57	D39	W34	D6	W37	4 - 2
18. H. Blajwas	W56	W19	D3	D9	D11	L5	$3\frac{1}{2}-2\frac{1}{2}$
19. H. Keesey	W52	L18	D23	L26	W51	W41	$3\frac{1}{2}-2\frac{1}{2}$
20. A. Spiller	D32	W46	W21	L2	W38	L6	$3\frac{1}{2}-2\frac{1}{2}$
21. D. Welsh	D22	W34	L20	W23	L8	W39	$3\frac{1}{2}-2\frac{1}{2}$
22. J. Brady	D21	W45	L9	W56	W33	L7	$3\frac{1}{2}-2\frac{1}{2}$
23. M. Kovacevic	L33	W56	D19	L21	W40	W38	$3\frac{1}{2}-2\frac{1}{2}$
24. R. Shepard	W42	L4	L6	D40	W54	W36	$3\frac{1}{2}-2\frac{1}{2}$
25. W. Dorne	W45	W31	W11	L7	L2	L12	3 - 3
26. R. Berggren	W40	L10	D30	W19	D13	L15	3 - 3
27. R. Neustaedter	W39	W33	L4	L6	W47	L14	3 - 3
28. M. Ek	W57	L1	D31	D30	W32	L16	3 - 3
29. Dr. F. Gamboa	L31	W42	W41	W36	L10	L13	3 - 3
30. Dr. M. Schlosser	L9	W52	D26	D28	L15	W50	3 - 3
31. C. Batchelder	W29	L25	D28	L13	D44	W49	3 - 3
32. R. Newbold	D20	L7	D46	W50	L28	W44	3 - 3
33. T. O'Connell	W23	L27	W48	---	L22	W45	3 - 3
34. D. Linn	W53	L21	L36	L17	W57	W43	3 - 3
35. M. Knabe	L12	L53	D58	W52	D46	W47	3 - 3
36. P. Weisz	W49	L2	W34	L29	D39	L24	$2\frac{1}{2}-3\frac{1}{2}$

## San Bernardino Open (Continued)

	1	2	3	4	5	6	Score
37. W. Howeth	L11	W54	W53	L14	D41	L17	2½-3½
38. L. Corbin	W54	W43	L5	D39	L20	L23	2½-3½
39. Ross Stoutenbro	L27	W51	D17	D38	D36	L21	2½-3½
40. R. Whittaker	L26	W59	L14	D24	L23	W51	2½-3½
41. D. Lucero	L1	W55	L29	W45	D37	L19	2½-3½
42. H. Rader	L24	L29	D51	L54	W55	W53*	2½-3½
43. H. Vaughan	W17	L38	L12	W53	L16	L34	2 - 4
44. Ryan Stoutenbro	L13	BYE	L15	D46	D31	L32	2 - 4
45. J. Nanassy	L25	L22	W49	L41	W48	L33	2 - 4
46. L. Beavers	D7	L20	D32	D44	D35	-	2 - 4
47. L. Cantafio	L3	L50	W57	W48	L27	L35	2 - 4
48. C. Ek	L16	W58	L33	L47	L45	W52	2 - 4
49. A. Kercheval	L36	L6	L45	W59	W56*	L31	2 - 4
50. L. Christiansen	L15	W47	L16	L32	D53	L30	1½-4½
51. J. Surlow	L5	L39	D42	W58	L19	L40	1½-4½
52. M. Grotke	L19	L30	D54	L35	W58	L48	1½-4½
53. S. Vigneau	L34	W35	L37	L43	D50	L42*	1½-4½
54. J. Mckone	L38	L37	D52	W42	L24	-	1½-4½
55. Donna Bragg	L14	L41	L56	D57	L42	W59	1½-4½
56. P. Orth	L18	L23	W55	L22	L49*	-	1 - 5
57. L. Bronson	L28	L17	L47	D55	L34	-	½ - 5½
58. Noel	L4	L48	D35	L51	L52	-	½ - 5½
59. I. Nanassy	L10	L40	L49	L55	-	-	0 - 6
60. Morris	L8	-	-	-	-	-	0 - 6

WEINBERGER, HENIN TIE FOR FIRST IN LONG BEACH

Tibor Weinberger won another trophy in the John Gilbreth Memorial Open at Long Beach, this time edging out Charles Henin. Weinberger, as he did at San Bernardino, won 5 games, drew with his challenger, and had one-half tie-breaking point more. There were 81 contestants and the tournament director was Gordon Barrett. The cash prizes of \$300 first and \$150 second were, of course, divided evenly.

JOHN GILBRETH MEMORIAL OPEN, LONG BEACH MAY 17-19, 1968

	1	2	3	4	5	6	Score
1. T. Weinberger	W57	W38	W4	W3	D2	W6	5½-½
2. C. Henin	W42	W19	W13	W5	D1	W11	5½-½
3. J. Tarjan	W47	W8	W22	L1	W27	W12	5 - 1
4. D. Anderson	W31	W40	L1	W23	W15	W14	5 - 1
5. R. Gross	W51	W35	W14	L2	W21	W17	5 - 1
6. S. Yarmak	W30	W44	W10	D7	W11	L1	4½-1½

## JOHN GILBRETH MEMORIAL OPEN (CONTINUED)

	1	2	3	4	5	6	Score
7. J. Lazos	W56	W20	D32	D6	D8	W24	4½-1½
8. P. Rhee	W58	L3	W73	W70	D7	W29	4½-1½
9. Dr. A. Saigy	W25	W34	L11	W35	D20	W22	4½-1½
10. J. Blackstone	W50	W39	L6	D21	W34	W20	4½-1½
11. M. Siero	W49	W27	W9	W32	L6	L2	4 - 2
12. W. Maillard	W71	D23	W16	W37	D17	L3	4 - 2
13. R. Reynolds	W62	W18	L2	L15	W43	W33	4 - 2
14. D. Littrell	W73	W28	L5	W59	W33	L4	4 - 2
15. C. Yergin	D36	D59	W52	W13	L4	W35	4 - 2
16. F. Fornoff	W52	D29	L12	D38	W53	W32	4 - 2
17. G. Nowak	W77	D33	W63	W40	D12	L5	4 - 2
18. V. Fagin	W79	L13	W25	L20	W65	W40	4 - 2
19. J. Alexander	W61	L2	W60	D24	D32	W36	4 - 2
20. G. Hunnex	W60	L7	W42	W18	D9	L10	3½-2½
21. R. Neustaedter	W78	W70	D23	D10	L5	D25	3½-2½
22. A. Spiller	W46	W55	L3	D28	W37	W9	3½-2½
23. R. DeLaura	W41	D12	D21	L4	W60	D26	3½-2½
24. C. Batchelder	W68	D37	D33	D19	W28	L7	3½-2½
25. S. Vigneau	L9	W54	L18	W67	W39	D21	3½-2½
26. R. Engler	L39	W56	L27	W43	W45	D23	3½-2½
27. K. Commons	W66	L11	W26	W61	L3	D34	3½-2½
28. D. Welsh	W53	L14	W36	D22	L24	W51	3½-2½
29. G. Gean	W76	D16	L37	W49	W44	L8	3½-2½
30. R. Glass	L6	W66	D38	L34	W59	W50	3½-2½
31. B. Weiner	L4	L41	W66	D52	W72	W49	3½-2½
32. W. Stewart	W48	W45	D7	L11	D19	L16	3 - 3
33. S. Salter	W80	D17	D24	W39	L14	L13	3 - 3
34. L. Kupersmith	W54	L9	D49	W30	L10	D27	3 - 3
35. G. Schain	W64	L5	W62	L9	W47	L15	3 - 3
36. J. Owen	D15	D43	L28	W46	W55	L19	3 - 3
37. D. Cotten	W75	D24	W29	L12	L22	D44	3 - 3
38. W. Bragg	W67	L1	D30	D16	D51	D42	3 - 3
39. S. Robin	W26	L10	W48	L33	L25	W60	3 - 3
40. W. Dorne	W74	L4	W64	L17	W63	L18	3 - 3
41. B. Hall	L23	W31	L45	L51	W77	W63	3 - 3
42. D. Sefton	L2	W71	L20	D72	W54	D38	3 - 3
43. L. Portillo	D59	D36	W65	L26	L13	W62	3 - 3
44. L. Harter	W72	L6	D61	W75	L29	D37	3 - 3
45. D. Zes	W69	L32	W41	-	L26	W68	3 - 3
46. D. Hinrichsen	L22	L52	W69	L36	W78	W59	3 - 3
47. D. Lucero	L3	L61	W74	W71	L35	W64	3 - 3
48. K. Smith	L32	W69	L72	L53	W80	W65	3 - 3
49. S. Skrypzak	L11	W74	D34	L29	W52	L31	2½-3½

## JOHN GILBRETH MEMORIAL OPEN (CONTINUED)

	1	2	3	4	5	6	Score
50. E. Hurt	L10	W58	L70	D54	W61	L30	2½-3½
51. T. Devine	L5	L64	W78	W41	D38	L28	2½-3½
52. D. Linn	L16	W46	L15	D60	L49	W76	2½-3½
53. R. LaBre	L28	L73	W77	W48	L16	D55	2½-3½
54. H. Vogt	L34	L25	W79	D50	L42	W72	2½-3½
55. E. Blackmore	W65	L22	L59	W62	L36	D53	2½-3½
56. F. Luederitz	L7	L26	L71	W66	D67	W74	2½-3½
57. L. Piliavin	L1	D67	D72	L60	D58	W71	2½-3½
58. P. Bronson	L8	L50	D80	D76	D57	W75	2½-3½
59. L. Wolfley	D43	D15	W55	L14	L30	L46	2 - 4
60. H. Gandara	L20	W80	L19	W57	L23	L39	2 - 4
61. Donna Bragg	L19	W47	D44	L27	L50	D73	2 - 4
62. G. Fennell	L13	W79	L36	L55	W75	L43	2 - 4
63. R. Walmisley	L70	W78	L17	W64	L40	L41	2 - 4
64. M. Knabe	L35	W51	L40	L63	W73	L47	2 - 4
65. R. Smith	L55	W77	L43	W68	L18	L48	2 - 4
66. H. Hoekman	L27	L30	L31	L56	W79	W77	2 - 4
67. Olga Higgins	L38	D57	L68	L25	D56	W80	2 - 4
68. J. Nanassy	L24	D75	W67	L65	D74	L45	2 - 4
69. R. Korte	L45	L48	L46	L77	W81	W78	2 - 4
70. J. Hanken	W63	L21	W50	L8	-	-	2 - 4
71. G. Saunders	L12	L42	W56	L47	D76	L57	1½-4½
72. M. Kovacevic	L44	D76	D57	D42	L31	L54	1½-4½
73. J. Batchelder	L14	W53	L8	-	L64	D61	1½-4½
74. C. Davidson	L40	L49	L47	W80	D68	L56	1½-4½
75. R. Sevilla	L37	D68	W76	L44	L62	L58	1½-4½
76. C. Fotias	L29	D72	L75	D58	D71	L52	1½-4½
77. P. Sulky	L17	L65	L53	W69	L41	L66	1 - 5
78. M. Afendykin	L21	L63	L51	W79	W46	L69	1 - 5
79. A. Thomas	L18	L62	L54	L78	L66	W81	1 - 5
80. J. Wilson	L33	L60	D58	L74	L48	L67	½ - 5½
81. I. Nanassy	-	-	-	-	L69	L79	0 - 6

RHEE WINNER OF EXPERT CANDIDATES TOURNAMENT

Peter Rhee scored 4-1 in the finals, following a 5-0 score in his preliminary section at the El Segundo Club, to win the annual Southern California Expert Candidates tournament of 1968. Rhee's only loss was to Steve Cross in the last round, after the championship was already won. Runner-up was Larry Neuton with an 8 - 2 score.



SOUTHERN CALIFORNIA EXPERT CANDIDATES TOURNAMENT, MAY-JUNE, 1968

The Experts Candidates consists of preliminary sections where about half of the field qualifies for the finals, and the final tournament, where scores made in the preliminaries are carried over. Thus, Rhee entered the finals a point ahead of Neuton, and was actually tied with Syvertson, 5-0, as the finals began.

	1	2	3	4	5	Prelim.	Final
1. P. Rhee	W10	W18	W8	W2	L3	5 - 0	9 - 1
2. L. Neuton	W8	W10	W18	L1	W6	4 - 1	8 - 2
3. S. Cross	W31	W12	D5	W8	W1	3 - 2	7½-2½
4. R. Taylor	D11	D5	D9	W20	W10	4 - 1	7½-2½
5. L. Corbin	L18	D4	D3	D10	W15	4½- 1	7 - 3
6. A. Gojich	W7	W14	W13	W36	L2	3 - 2	7 - 3
7. G. Istvanyi	L6	W24	W22	W13	W11	3 - 2	7 - 3
8. T. Devine	L2	W11	L1	L3	W21	4½- ½	6½-3½
9. A. Ramirez	W20	L13	D4	W23	D14	3½-1½	6½-3½
10. R. Syvertsen	L1	L2	W15	D5	L4	5 - 0	6½-3½
11. D. Argall	D4	L8	W16	D15	L7	4 - 1	6 - 4
12. H. Cillers	W24	L3	L20	W29	W19	3 - 2	6 - 4
13. D. Cotten	W19	W9	L6	L7	W20	3 - 2	6 - 4
14. R. Stoutenbro	L15	L6	W21	W16	D9	3½-1½	6 - 4
15. J. Whitcomb	W14	W23	L10	D11	L5	3½-1½	6 - 4
16. D. Linn	W17	W31	L11	L14	W29	2½-2½	5½-4½
17. R. Newbold	L16	W30	L23	W32	W27	2½-2½	5½-4½
18. M. Thomason	W5	L1	L2	-	-	4½- ½	5½-4½
19. F. Castro	L13	L20	W31	W22	L12	3 - 2	5 - 5
20. T. Mishler	L9	W19	W12	L4	L13	3 - 2	5 - 5
21. J. Nanassy	W36	W29	L14	W25	L8	2 - 3	5 - 5
22. Y. Oganessov	W28	W26	L7	L19	D25	2½-2½	5 - 5
23. A. Caldwell	W29	L15	W17	L9	L24	2½-2½	4½-5½
24. H. Vaughan	L12	L7	D25	L27	W23	3 - 2	4½-5½
25. C. Young	W33	W35	D24	L21	E22	1½-3½	4½-5½
26. M. Cowdrey	W34	L22	-	L33	W32	2 - 3	4 - 6
27. M. Gojich	L32	W33	W35	W24	L17	1 - 4	4 - 6
28. H. Shipin	L22	L32	W36	D30	W33	1½-3½	4 - 6
29. E. Stuckey	L23	L21	W30	L12	L16	3 - 2	4 - 6
30. D. Rader	W35	L17	L29	D28	W36	1 - 4	3½-6½
31. W. Korst	L3	L16	L19	-	-	3 - 2	3 - 7
32. L. Magzico	W27	W28	W33	L17	L26	0 - 5	3 - 7
33. R. Osterwald	L25	L27	L32	W26	L28	2 - 3	3 - 7
34. Mrs. H. Manchel	L26	-	-	-	-	2 - 3	2 - 8
35. S. Oliva	L30	L25	L27	-	-	2 - 3	2 - 8
36. I. Nanassy	L21	L28	L6	L30	-	0 - 0	0 - 4

## EL SEGUNDO SECTION

	1	2	3	4	5	Score
1. P. Rhee	W10	W3	W2	W4	W5	5 - 0
2. R. Taylor	W8	W7	L1	W5	W3	4 - 1
3. H. Cillers	W12	L1	W7	W6	L2	3 - 2
4. A. Gojich	W11	D5	W9	L1	D7	3 - 2
5. A. Caldwell	W6	D4	W12	L2	L1	2½-2½
6. D. Linn	L5	D8	W10	L3	W9	2½-2½
7. J. Porter	W9	L2	L3	W8	D4	2½-2½
8. N. Morrison	L2	D6	W11	L7	D10	2 - 3
9. J. Nanassy	L7	W11	L4	W12	L6	2 - 3
10. H. Shipin	L1	L12	L6	W11	D8	1½-3½
11. Dr. B. Glazer	L4	L9	L8	L10	W12	1 - 4
12. M. Gojich	L3	W10	L5	L9	L11	1 - 4

## MONTEREY PARK SECTION

	1	2	3	4	5	Score
1. R. Syvertsen	W15	W8	W9	W5	W4	5 - 0
2. D. Argall	W16	D9	W8	D3	W5	4 - 1
3. A. Ramirez	D11	D6	W7	D2	W13	3½-2½
4. F. Castro	W7	L5	W6	W10	L1	3 - 2
5. S. Cross	W12	W4	W11	L1	L2	3 - 2
6. E. Stuckey	W13	D3	L4	D8	W14	3 - 2
7. R. Benz	L4	D14	L3	W12	W15	2½-2½
8. Y. Oganesev	W14	L1	L2	D6	W9	2½-3½
9. Dr. R. Brow	W10	D2	L1	D11	L8	2 - 3
10. M. Carter	L9	W16*	W12	L4	L11*	2 - 3
11. J. Crawford	D3	W13	L5	D9	L10*	2 - 3
12. J. Flores	L5	W15	L10	L7	BYE	2 - 3
13. R. Osterwald	L6	L11	BYE	W15	L3	2 - 3
14. H. Wingfield	L8	D7	L15	BYE	L6	1½-3½
15. D. Rader	L1	L12	W14	L13	L7	1 - 4
16. L. Clark	L2	-	-	-	-	0 - 6

## STEINER SECTION

	1	2	3	4	5	Score
1. A. Bisno	W8	W9*	W6	W4*	L2	4 - 1
2. L. Neuton	W5	W3	L4	W8	W1	4 - 1
3. Mrs. Grumette	W10	L2	W8	D6	-	2½-2½
4. M. Topiol	D6	W10*	W2	L1*	-	2½-2½
5. Mrs. H. Manchel	L2	L8	W10*	W7*	-	2 - 3
6. D. Welsh	D4	W7	L1	D3	-	2 - 3
7. J. Brady	L9	L6	W9*	L5*	-	1 - 4
8. Dr. B. Collins	L1	W5	L3	L2	-	1 - 4
9. R. Neustaedter	W7	L1*	-	-	-	1 - 4
10. L. Magsoico	L3	L4*	L5*	-	-	0 - 5

## RIVERSIDE SECTION

	1	2	3	4	5	Score
1. L. Corbin	W7	W9	D2	W6	W4	4½-½
2. T. Devine	W11	W3	D1	W5	W6	4½-½
3. R. Stoutenbro	W10	L2	D5	W11	W8*	3½-1½
4. D. Cotten	L5	W12	W7	W9	L1	3 - 2
5. H. Vaughan	W4	D6	D3	L2	W9	3 - 2
6. R. Newbold	W12	D5	W11	L1	L2	2½-2½
7. R. Whittaker	L1	D10	L4	W12*	W11	2½-2½
8. R. Miller	L9	L11	W12	W10	L3*	2 - 3
9. S. Skrypzak	W8	L1	W10	L4	L5	2 - 3
10. C. Young	L3	D7	L9	L7	W12	1½-3½
11. M. Grotke	L2	W8	L6	L3	L7	1 - 4
12. A. Kercheval	L6	L4	L8	L7*	L10	0 - 5

## PASADENA SECTION

	1	2	3	4	5	Score
1. M. Thomason	W9	W12	W5	W7	D3	4½-½
2. S. Morford	W8	W10	L6	W9	W7	4 - 1
3. D. Powell	W14*	W15	L7	W10	D1	3½-1½
4. J. Whitcomb	L6	W13	D10	W5	W8	3½-1½
5. C. Chrones	W15	W14*	L1	L4	W12	3 - 2
6. M. Cotter	W4	L7	W2	L8	W11*	3 - 2
7. J. Cromshaw	W13	W6	W3	L1	L2	3 - 2
8. G. Istvanyi	L2	W16	W14*	W6	L4	3 - 2
9. T. Mishler	L1	W11	W12	L2	W13	3 - 2
10. D. Young	W16	L2	D4	L3	W15	2½-2½
11. M. Cowdrey	L12	L9	W16*	W15	L6*	2 - 3
12. R. Kotz	W11	L1	L9	W13	L5	2 - 3
13. J. Thiessen	L7	L4	W15	L12	L9	1 - 4
14. R. Williams	L3*	L5*	L8*	-	-	1 - 4
15. B. Lambros	L5	L3	L13	L11	L10	0 - 5
16. D. Taliaferro	L10	L8	L11*	-	-	0 - 5

WEINBERGER INVITED TO U.S. CHAMPIONSHIP

As a result of his recent triumphs and gain in rating points, Tibor Weinberger has been invited to play in the U.S. Chamionship in New York. It isn't often that a California chessplayer makes it, and we congratulate Tibor on a great tournament season. (Parenthetically, we regret that we can't show some of his wins in these pages. But we must make do with what we have, and Tibor doesn't send us games. John Blackstone does, and so we have to publish one of Tibor's few losses, on pages 110-111 of this issue.)

WEST COAST OPEN

As reported in our last issue, Tibor Weinberger won the West Coast Open in March. The cross-table is now available:

WEST COAST OPEN, SANTA MONICA, MARCH 15-17, 1968

	1	2	3	4	5	6	Score
1. T. Weinberger	W85	W89	W26	W6	W8	W5	6 - 0
2. P. Quillen	W101	D73	W57	W27	W7	W13	5½ - ½
3. P. Benko	W56	L16	W82	W54	W25	W21	5 - 1
4. L. Binet	W48	W44	W24	L8	W14	W19	5 - 1
5. J. Blackstone	W77	W47	W45	W21	W19	L1	5 - 1
6. P. Eberlein	W29	W50	W16	L1	W38	W34	5 - 1
7. W. Maillard	W49	W54	W14	W9	L2	W20	5 - 1
8. J. Tarjan	W86	W36	W38	W4	L1	W24	5 - 1
9. W. Bragg	W93	W98	W42	L7	W*	D11	4½ - 1½
10. P. Forsee	L*	D95	W65	W77	W41	W42	4½ - 1½
11. C. Henin	W72	W61	W25	L19	W45	D9	4½ - 1½
12. S. Rubin	W75	W23	E13	L22	W66	W40	4½ - 1½
13. A. Spiller	W64	W30	E12	W41	W22	L2	4½ - 1½
14. S. Almgren	W46	W43	L7	W81	L4	W58	4 - 2
15. B. Antman	W80	L68	W48	W50	L20	W57	4 - 2
16. R. De Laura	W35	W3	L6	W74	L21	W49	4 - 2
17. R. Glass	W102	L19	D60	W32	W31	E26	4 - 2
18. B. Hall	W88	L45	L66	W86	W56	W61	4 - 2
19. S. Hohensee	W95	W17	W33	W11	L5	L4	4 - 2
20. R. Klein	L70	W104	W72	W29	W15	L7	4 - 2
21. H. Mayer	W79	W28	W68	L5	W16	L3	4 - 2
22. F. McReynolds	W104	W58	E41	W12	L13	D27	4 - 2
23. J. Owen	W63	L12	E36	E58	W82	W44	4 - 2
24. R. Reynolds	W52	W97	L4	W33	W61	L8	4 - 2
25. P. Rhee	W76	W32	L11	W28	L3	W51	4 - 2
26. K. Stani	W89	W70	L1	E66	W50	D17	4 - 2
27. D. Tashjian	D40	W69	W56	L2	W70	D22	4 - 2
28. J. Varis	W60	L21	W97	L25	W83	W45	4 - 2
29. E. Bohanan	L6	W80	W84	L20	D33	W71	3½ - 2½
30. M. Fabian	W84	L13	L83	W37	W46	D39	3½ - 2½
31. G. Gean	D65	W67	D73	D68	L17	W54	3½ - 2½
32. R. Harvey	W66	L25	D71	L17	W77	W73	3½ - 2½
33. J. Hoggatt	W91	W39	L19	L24	D29	W65	3½ - 2½
34. J. Klinger	W74	L41	D77	W95	W73	L6	3½ - 2½
35. S. Levine	L16	D88	W64	L59	W*	W68	3½ - 2½
36. C. Lowery	W94	L8	D23	L70	W75	W62	3½ - 2½
37. Milorad	L61	L56	W102	W30	W85	D38	3½ - 2½
38. D. Roy	W82	W83	L8	W49	L6	D37	3½ - 2½

## WEST COAST OPEN, SANTA MONICA (CONTINUED)

	1	2	3	4	5	6	Score
39. M. Siero	W81	L33	W85	D73	D57	D30	3½-2½
40. D. Slough	D27	L57	W88	W71	W*	L12	3½-2½
41. D. Welsh	W87	W34	D22	L13	L10	W70	3½-2½
42. P. Wrangell	D69	W65	L9	W75	W68	L10	3½-2½
43. H. Babel	W71	L14	L50	W52	L58	W81	3 - 3
44. G. Bromley	W78	L4	L74	W76	W81	L23	3 - 3
45. R. Edberg	W103	W18	L5	W51	L11	L28	3 - 3
46. G. Fitzgerald	L14	BYE	L47	W98	L30	W85	3 - 3
47. J. Guilaroff	W96	L5	W46	W83	-	-	3 - 3
48. J. Kent	L4	W96	L15	D62	W67	D59	3 - 3
49. B. Kohn	L7	W53	W98	L38	W*	L16	3 - 3
50. N. Kurtz	W55	L6	W43	L15	L26	W66	3 - 3
51. L. Nezhni	L97	W76	W62	L45	W55	L25	3 - 3
52. A. Patsch	L24	L71	W94	L43	W96	W82	3 - 3
53. A. Pealman	L73	L49	W93	L82	W76	W79	3 - 3
54. H. Rogosin	W100	L7	W55	L3	W74	L31	3 - 3
55. G. Reissman	L50	W101	L54	W89	L51	W86	3 - 3
56. D. Sefton	L3	W37	L27	W91	L18	W83	3 - 3
57. V. Tokareff	D67	W40	L2	W60	D39	L15	3 - 3
58. S. Vigneau	W90	L22	D70	D23	W43	L14	3 - 3
59. D. Wildschutz	L83	W89	D75	W35	L*	D48	3 - 3
60. L. Wolfley	L28	W86	D17	L57	D64	W74	3 - 3
61. H. Zwerdling	W37	L11	W97	W67	L24	L18	3 - 3
62. G. Abe	L68	W79	L51	D48	W72	L36	2½-3½
63. L. Beavers	L23	L75	D92	W87	L*	W90	2½-3½
64. P. Bronson	L13	D87	L35	W92	D60	D77	2½-3½
65. J. Chen	D31	L42	L10	W93	W*	L33	2½-3½
66. K. Commons	L32	W103	W18	D26	L12	L50	2½-3½
67. D. Gershuny	D57	L31	W69	L61	L48	W95	2½-3½
68. R. Melniker	W62	W15	L21	D31	L42	L35	2½-3½
69. K. Morrisey	D42	L27	L67	L88	W92	W89	2½-3½
70. S. Schwartz	W20	L26	D58	W36	L27	L41	2½-3½
71. S. Telingator	L43	W52	D32	L40	W95	L29	2½-3½
72. J. Wilson	L11	W100	L20	D97	L62	W94	2½-3½
73. C. Yergin	W53	D2	D31	D39	L34	L32	2½-3½
74. J. Brady	L34	W90	W44	L16	L54	L60	2 - 4
75. Donna Bragg	L12	W63	D59	L42	L36	D80	2 - 4
76. E. Briggs	L25	L51	W90	L44	L53	W98	2 - 4
77. J. Dix	L5	W91	D54	L10	L32	D64	2 - 4
78. R. Ervin	L44	L82	L86	L79	BYE	W96	2 - 4
79. L. Gilbert	L21	L62	L96	W78	W91	L53	2 - 4
80. R. Goldie	L15	L29	L89	W104	D90	D75	2 - 4
81. Olga Higgins	L39	W94	W104	L14	L44	L43	2 - 4

## WEST COAST OPEN, SANTA MONICA (CONTINUED)

	1	2	3	4	5	6	Score
82. S. Holbrock	L38	W78	L3	W53	L23	L52	2 - 4
83. G. Istvanyi	W59	L38	W30	L47	L28	L56	2 - 4
84. R. Jester	L30	W93	L29	W98	-	-	2 - 4
85. P. Razien	L1	W92	L39	W96	L37	L46	2 - 4
86. T. Twaiten	L8	L60	W78	L18	W98	L55	2 - 4
87. J. Adamson	L41	D64	L95	L63	-	W104	1½-4½
88. M. Bramson	L18	D35	L40	W69	-	-	1½-4½
89. R. Couch	L26	L59	W80	L55	D94	L69	1½-4½
90. D. Crowther	L58	L74	L76	BYE	D80	L63	1½-4½
91. D. Houghton	L33	L77	W*	L56	L79	D93	1½-4½
92. R. Korte	L99	L85	D63	L64	L69	W100	1½-4½
93. B. Murdock	L9	L84	L53	L65	W*	D91	1½-4½
94. D. Richardson	L36	L81	L52	W100	D89	L72	1½-4½
95. C. Valkenburg	L19	D10	W87	L34	L71	L67	1½-4½
96. F. Calvert	L47	L48	W79	L85	L52	L78	1 - 5
97. J. Toulouse	W51	L24	L28	D72	-	-	1½-4½
98. W. Mohawk	BYE	L9	L61	L84	L86	L76	1 - 5
99. R. Neustaedter	W92	L1	L49	L46	-	-	1 - 5
100. R. Campbell	L54	L72	L37	L94	-	L92	0 - 6
101. K. Leonhardt	L2	L55	-	-	-	-	0 - 6
102. L. Moore	L17	-	-	-	-	-	0 - 6
103. S. Stewart	L45	-	-	-	-	-	0 - 6
104. G. Tuttle	L22	L20	L81	L80	L*	L87	0 - 6

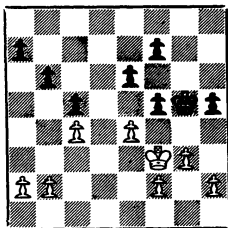
## GAME OF THE MONTH

Former Games Editor Val Zemitis arrived in Moscow right after the first game of the Tal-Korchnoi match and discovered that various USSR masters thought Tal should have won. Is the secret of Korchnoi's mastery over Tal psychological? It must be bothersome to a combinational player to have his pieces traded off before he can get something going. But it looks as though Tal, who is not physically strong, simply got tired.

## Game No. 1050 - Queen's Indian

White	Black		
<u>M. Tal</u>	<u>V. Korchnoi</u>	7. Kt-B3	Kt-K5
1. P-Q4	Kt-KB3	8. Q-B2	KtxKt
2. P-QB4	P-K3	9. QxKt	P-QB4
3. Kt-KB3	P-QKt3	10. B-K3	B-B3
4. P-KKt3	B-Kt2	11. KR-Q1	BxKt
5. B-Kt2	B-K2	12. BxB	Kt-B3
6. 0-0	0-0	13. BxKt	PxB

- |          |       |
|----------|-------|
| 14. Q-Q3 | PxP   |
| 15. BxP  | P-B4  |
| 16. B-B3 | Q-K2  |
| 17. Q-Q7 | KR-Q1 |
| 18. QxQ  | BxQ   |
| 19. P-K4 | P-KR4 |
| 20. K-B1 | B-B3  |
| 21. BxB  | PxB   |
| 22. K-K2 | K-Kt2 |
| 23. RxR  | RxR   |
| 24. R-Q1 | RxR   |
| 25. KxR  | K-Kt3 |
| 26. K-K2 | K-Kt4 |
| 27. K-B3 | P-B4  |

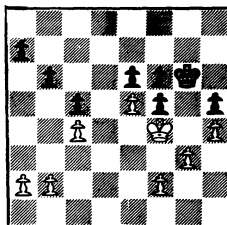


28. P-KR3?

Although King and Pawn endings are notoriously tricky and we hesitate to proclaim the following analysis the last word, it looks as though Tal missed an easy win here with 28. P-K5! Some of the Moscow on-lookers thought the game would continue ... P-B3; 29. P-R4ch, K-Kt3; 30. K-B4, reaching the position diagrammed opposite.

Now White threatens to break through on the King-side and set up an outside passed Pawn. If Black starts action on the Queen-side, White locks the King-side and moves to the Queen side, again obtaining the outside passed Pawn.

If 30...P-R3; 31. P-R3, P-Kt4; 32. PxP, PxP; 33. P-Kt3 and now White



transfers the King to the Queen-side and plays P-R4 with the outside passed Pawn. For example: 33...K-Kt3; 34. K-K3 and wins. If Black does not become active on the Queen-side, White plays P-B3 and, when the Black King moves away from Kt3, plays P-Kt4 setting up an outside passed P.

The game continued:

- |            |        |
|------------|--------|
| 28. ...    | K-B3   |
| 29. K-B4   | P-K4ch |
| 30. K-K3   | P-R3   |
| 31. P-Kt3  | K-K3   |
| 32. PxPch  | KxP    |
| 33. P-B3   | K-K3   |
| 34. P-KKt4 | P-B4!  |
| 35. PxPch  | KxP    |

and the game was drawn at move 40. This game was analyzed for many hours by the Reporter staff, and we recommend that the reader also play around with the ramifications of the deceptively simple position. For example, Black might try P-R5 after the original 28. P-K5. White then gets the passed Pawn, but how he wins is tricky. One line is 28. P-K5, P-R5; 29. P-KR3, K-R3; 30. K-B4, K-Kt6; 21. P-KKt4, PxP; 32. KxP. The play on the Q-side is also very interesting.

ROUND 6  
LA COUNTY OPEN 1968

B-Q2 and Black is attacking two pieces at once.

Game No. 1051 - King's Indian  
(Notes by John Blackstone)

White	Black
<u>T. Weinberger</u>	<u>J. Blackstone</u>
1. P-Q4	Kt-KB3
2. P-QB4	P-KKt3
3. Kt-QB3	B-Kt2
4. P-KKt3	

Weinberger usually plays this line as White.

4. ...	O-O
5. B-Kt2	P-B4
6. Kt-B3	Kt-B3
7. O-O	

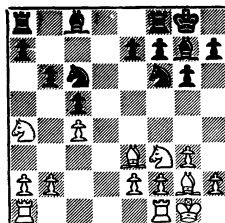
With Weinberger leading by a half point going into the last round he is not willing to play the more aggressive 7.P-Q5. He wants to play safe. He later criticized himself for not playing more aggressively during this game. He follows these same tactics down the path till he gets a lost game. One must be willing to fight in a Swiss System tournament where one would not normally want to do so in a round robin.

7. ...	P-Q3
8. PxP	PxP
9. B-K3	Q-R4
10. Q-R4	

This is going too far. Best is 10. B-Q2 though latest analysis seems to indicate 10...B-B4 will equalize for Black.

10. ...	QxQ
11. KtxQ	P-QKt3

After this last move by Black, I would go as far as saying that Whitenow has the worst of the game and is probably lost. The tactical justification of my last move is



12. QR-Q1	B-R3!
-----------	-------

With this move Black attacks White's QBP and covers the square QKt4 which will turn out to be a key point later on.

13. P-Kt3	...
-----------	-----

Not 13.Kt-Q2 as after QR-Bi White's pieces are getting into each others way.

13. ...	QR-Q1
14. P-KR3	Kt-QKt5!
15. Kt-B3	...

If 15.P-R3,Kt-B7;16.B-B1,Kt-K5; 17.B-Kt2 (17.Kt-R4,Kt-Q3 with the threats of Kt-Q5 and Kt-R8 plus the additional advantage that Black's pieces, piece for piece, are more active), BxB;18.KtxB,Kt-B6 and Black wins.

15...	Kt-R4
16. Kt-QKt5	BxKt

See note after move 12. Also note that 16.Kt-Q5 was impossible because after all the exchanges on Q5 White's KP is hanging.

17. PxB	KtxRP
18. P-KKt4	...

White now tries to get some play but it's too late.

18. ...	Kt-B3
19. RxR	RxR
20. R-R1	Kt-B6
21. ...	B-Q2



White's loose pawns will not run away. First of all Black activates his last piece and lays the ground work for a small tactical twist.

22. Kt-K1 ...  
 Better is perhaps either Kt-R2 or R4 but then KtxPch followed by Kt7-B6 leads to a hopelessly lost position anyway.

22. ... KtxP  
 23. R-Kt7 Kt-Q3!  
 24. R-R7 ...  
 Not 24. BxKt,KtxR; 25. BxKt,R-Q8 followed by B-B6 wins outright for Black.

24. ... KtxB  
 25. PxKt B-B3  
 The end of Black's little combination. He is now not only material ahead but also positionally as White's pawn structure is extremely weak. Black's last move is best as it protects his King Pawn and at the same time fixes White's King side Pawns.

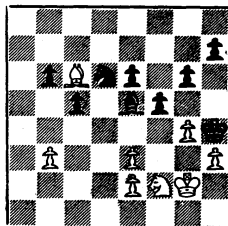
26. Kt-Q3 R-QB1  
 27. R-R8 ...  
 A sad necessity otherwise 27...P-QKt4 followed by the advance of the QBP wins rather easily.

27. ... RxR  
 28. BxR P-K3  
 29. K-B2 K-Kt2  
 30. B-B6 B-B6  
 31. K-B3 K-B3  
 32. Kt-B2 ...  
 Better is 32.P-R4 to stop Black's next move which is based on the following ideas. 1)If White exchanges into a Bishop of opposite color ending he loses a second Pawn 2)Black will eventually play P-KB4 and secure 2 passed pawns on the K side. Either of which results in a win for Black.

32. ... K-Kt4

33. Kt-Q1 ...  
 If 33.Kt-K4+,KtxKt;34. BxKt, K-R5; 35.K-Kt2,B-Q7 and the second Pawn goes.

33. ... B-K4  
 34. Kt-B2 K-R5  
 35. K-Kt2 P-B4



After the game Weinberger claimed this was a mistake and he should have been able to draw someplace but he lost the postmortem also.

36. R-Q7 B-Kt6  
 37. Kt-R1 B-K8!  
 38. BxP P-QKt4  
 39. PxP PxP  
 40. K-B1 B-Q7  
 41. K-B2 P-QB5  
 42. PxP PxP  
 43. K-B3 P-B6  
 44. B-Kt3 B-K8  
 45. K-Kt2 Kt-B5  
 46. K-B1 B-Q7  
 47. K-B2 KtxP  
 48. Kt-Kt3 KxP  
 49. K-B3 K-R5  
 50. B-R4 K-Kt4  
 51. K-B2 P-B7  
 52. BxP KtxB

RESIGNS

In this endgame White's King maneuvers clearly demonstrates his hopelessness.

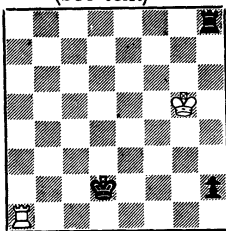
**TASKS:**

The North-South Match would be open to all of the critics' barbs if it were nothing more than a match and a business meeting. There is more to it than that. One of the more enjoyable aspects of this gathering - one that was far from absent at the 1968 event - is the chance to "talk chess" with old friends . . . everything from anecdotes to sharing endgame studies or unpublished game positions.

Sven Almgren called our attention to a game score won by Tolstoi, in addition to showing some of his recent compositions. Dr. Frank Ruys and Irving Rivise perennially pass around some old chestnuts. Earl Pruner showed an ending played several years ago in a skittles game - in which Bill Addison quickly found a subtle draw (see below).

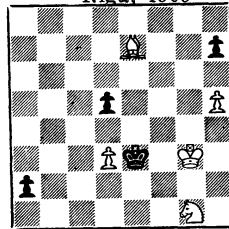
The Tasks section of the Reporter, we are happy to point out, is a center of attraction at such sessions. The two Knights vs. two Pawns ending from last issue was played out to the last move (no easy task!) in the Henry Gross hospitality suite, by all assembled. Task No. 274 would be an excellent addition to the North-South gallery of favorites.

No. 273  
Addison-Pruner  
(see text)



White plays and draws

No. 274  
V. & M. Platov  
Riga, 1909



White plays and wins