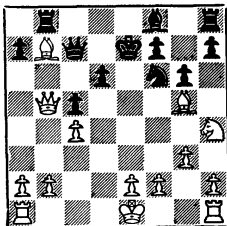


THE CALIFORNIA CHESS REPORTER

E. Pruner vs N. Wood



White Plays a Devas-
tating Attacking Move
(15. Kt-Kt2!)

FROM: 244 Kearny Street, 4th Floor
San Francisco, Calif. 94108

TO:

HENIN WINS BAKERSFIELD OPEN CHAMPIONSHIP

Charles Henin of Los Angeles won the Ernest Shields Open and the \$500 first prize by a 5½-½ score. Bruce Antman of Los Angeles, William Bills of Houston, Texas, Ronald Gross of Manhattan Beach and Touradj Saidi of Long Beach tied for second through fifth places. David Molnar and David Roy tied for the Class A prize. Mark Gazse won Class B with Roger Myers second. William Stuart won Class C with Mike Mills second. The tournament director was Gordon S. Barrett.

ERNEST SHIELD OPEN, BAKERSFIELD, JULY 19-21, 1968

	1	2	3	4	5	6	Score
1. C. Henin	W31	W23	W22	W8	W6	D2	5½-½
2. B. Antman	W52	W29	W4	D7	W15	D1	5 - 1
3. W. Bills	W60	W43	D9	D14	W7	W12	5 - 1
4. R. Gross	W44	W58	L2	W37	W18	W16	5 - 1
5. T. Saidi	W36	L12	W72	W58	W17	W20	5 - 1
6. J. Acers	W38	W32	W16	W12	L1	D8	4½-1½
7. D. Molnar	W62	W19	W41	D2	L3	W46	4½-1½
8. S. Subramanian	W34	W24	S33	L1	W14	D6	4½-1½
9. L. Remlinger	W47	W37	D3	D17	D22	W23	4½-1½
10. D. Fritzinger	W72	W49	L12	W32	D23	W24	4½-1½
11. D. Roy	L55	W61	W21	D34	W49	W22	4½-1½
12. R. Neustaedter	W28	W5	W10	L6	W42	L3	4 - 2
13. J. Schmitt	W21	W63	D18	D15	L20	W43	4 - 2
14. J. Lazos	W75	D33	W39	D3	L8	W40	4 - 2
15. A. Spiller	W54	D25	W35	D13	L2	W30	4 - 2
16. R. Hammie	W61	W55	L6	W29	W41	L4	4 - 2
17. R. Klein	W76	D39	W30	D9	L5	W38	4 - 2
18. A. Kanamori	W57	W56	D13	D42	L4	W29	4 - 2
19. D. Anderson	W45	L7	L29	W52	W47	W34	4 - 2
20. K. Stani	L59	W64	W38	W31	W13	L5	4 - 2
21. M. Gazse	L13	W73	L11	W69	W37	W33	4 - 2
22. G. Hunnex	W70	W59	L1	W40	D9	L11	3½-2½
23. R. Harshbarger	W65	L1	W36	W55	D10	L9	3½-2½
24. H. Blajwas	W64	L8	W44	D49	W39	L10	3½-2½
25. R. Myers	W26	D15	L42	L30	W53	W35	3½-2½
26. P. Smith	L25	W70	L31	D53	W72	W49	3½-2½
27. J. Stremel	L56	L57	W65	W36	D31	W54	3½-2½
28. W. Stuart	L12	L36	W76	W67	D60	W57	3½-2½
29. D. Cotten	W69	L2	W19	L16	W51	L18	3 - 3
30. P. Klimek	D46	W51	L17	W25	D34	L15	3 - 3
31. S. Schwartz	L1	W65	W26	L20	D27	D39	3 - 3
32. A. Gates	W71	L6	W56	L10	W45	"	3 - 3
33. N. Miller	W77	D14	L8	D35	W44	L21	3 - 3

Ernest Shields Open (continued)

	1	2	3	4	5	6	Score
34. D. Wildschutz	L8	W76	W59	D11	D30	L19	3 - 3
35. D. Lucero	D42	W46	L15	D33	W58*	L25	3 - 3
36. S. Skrypzak	L5	W28	L23	L27	W61	W59	3 - 3
37. B. Pollard	W68	L9	W52	L4	L21	W56	3 - 3
38. S. Levine	L6	W71	L20	W74	W63	L17	3 - 3
39. G. Brinkley	BYE	D17	L14	W60	L24	D31	3 - 3
40. L. Harter	W74	L41	W57	L22	W48	L14	3 - 3
41. G. Padilla	W53	W40	L7	W63	L16	-	3 - 3
42. R. Schultz	D35	W60	W25	D18	L12	-	3 - 3
43. D. Welsh	W48	L3	L55	W50	W57	L13	3 - 3
44. V. Fagin	L4	W66	L24	W62	L33	W64	3 - 3
45. S. Vigneau	L19	W62	L58	W72	L32	W55	3 - 3
46. D. Baker	D30	L35	W67	D51	W55	L7	3 - 3
47. F. Berry	L9	L68	W73	W56	L19	W60	3 - 3
48. M. Mills	L43	L50	W61	W68	L40	W66	3 - 3
49. D. Maxwell	W67	L10	W68	D24	L11	L26	2½-3½
50. D. Hinrichsen	L3	W48	L63	L43	W69	D51	2½-3½
51. M. Leidner	D60	L30	W54	D46	L29	D50	2½-3½
52. C. Fotias	L2	W69	L37	L19	D66	W71	2½-3½
53. G. Oakes	L41	L74	W66	D26	L25	W67	2½-3½
54. J. Rowell	L15	D67	L51	W70	W62	L27	2½-3½
55. K. Morrisey	W11	L16	W43	L23	L46	L45	2 - 4
56. J. Nanassy	W27	L18	L32	L47	W71*	L37	2 - 4
57. J. Surlow	L18	W27	L40	W59	L43	L28	2 - 4
58. V. Radaikin	W66	L4	W45	L15	L35*	-	2 - 4
59. Burkitt	W20	L22	L34	L57	W74	L36	2 - 4
60. P. Vayssie	D51	L42	W74	L39	D28	L47	2 - 4
61. D. Linn	L16	L11	L48	W73	L36	W72	2 - 4
62. R. Evans	L7	L45	W64	L44	L54	W73	2 - 4
63. J. Alexander	W73	L13	W50	L41	L38	-	2 - 4
64. A. Rackett	L24	L20	L62	W77	W68	L44	2 - 4
65. C. Himes	L23	L31	L27	L71	W76	W74*	2 - 4
66. W. Barlow	L58	L44	L53	W76	D52	L48	1½-4½
67. L. Williams	L49	D54	L46	L28	W70	L53	1½-4½
68. A. Alpert	L37	W47	L49	L48	L64	D69	1½-4½
69. P. Wise	L29	L52	W77	L21	L50	D68	1½-4½
70. V. Saporito	L22	L26	D71	L54	L67	W76	1½-4½
71. B. Horton	L32	L38	D70	W65	L56*	L52	1½-4½
72. E. Shields	L10	W77	L5	L45	L26	L61	1 - 5
73. M. Andrews	L63	L21	L47	L61	W77	L62	1 - 5
74. H. Mason	L40	W53	L60	L38	L59	L65*	1 - 5
75. C. Linebaugh	L14	-	-	-	-	W77	1 - 5
76. J. Narcisi	L17	L34	L28	L66	L65	L70	0 - 6
77. L. Frasier	L33	L72	L69	L64	L73	L75	0 - 6

KAUFMAN, BILLS, PILNICK TIE IN SOUTHERN CALIFORNIA OPEN

Larry Kaufman of Silver Spring, Maryland, tied with William Bills of Houston, Texas, and Carl Pilnick of Los Angeles for first place in the Southern California Open and was awarded first on tie-breaking points. Each player had four wins and one draw.

There also was a tie in the second section, limited to players with less than 1800 rating points, between Donald Cotten of Riverside and Louis Portillo of Diamond Bar. Both players had perfect 5 - 0 scores. The grand total was 165 contestants. The tournament was sponsored by the Santa Monica Bay Chess Club and was directed by Andy Kempner.

SOUTHERN CALIFORNIA OPEN, SANTA MONICA, AUGUST 2-4, 1968

	1	2	3	4	5	Score
1. L. Kaufman	W38	W40	D2	W30	W7	4½ - ½
2. W. Bills	W53	W23	D1	W12	W6	4½ - ½
3. C. Pilnick	W52	W42	W11	W10	D4	4½ - ½
4. R. Kirby	W51	W17	W5	D6	D3	4 - 1
5. S. Hohensee	W32	W36	L4	W *	W12	4 - 1
6. T. Weinberger	W18	W22	W13	D4	L2	3½ - 1½
7. J. Acers	D23	W50	W8	W *	L1	3½ - 1½
8. P. Rhee	W20	D10	L7	W43	W28	3½ - 1½
9. J. Mego	D50	D28	W36	D20	W29	3½ - 1½
10. S. Subrammian	W37	D8	W38	L3	W30	3½ - 1½
11. H. Mayer	D44	W41	L3	W22	W13	3½ - 1½
12. R. Gross	W27	W25	W16	L2	L5	3 - 2
13. E. Kennedy	W35	W43	L6	W25	L11	3 - 2
14. D. Wildschutz	L15	L18	W32	W*	W34	3 - 2
15. W. Cornwall	W14	L21	W47	L*	W35	3 - 2
16. M. Leidner	D42	W52	L12	W18	D20	3 - 2
17. A Spiller	W29	L4	W44	L28	W37	3 - 2
18. L. Kupersmith	L6	W14	W46	L16	W36	3 - 2
19. D. Fritzingier	L36	W32	D28	D27	W38	3 - 2
20. C. Yergin	L8	W31	W48	D9	D16	3 - 2
21. J. Lazos	W47	W15	D30	L*	L*	2½ - 2½
22. P. Eberlein	W41	L6	D35	L11	W43	2½ - 2½
23. H. Kurruk	D7	L2	L27	W42	W44	2½ - 2½
24. E. Wicher	L43	D27	W42	D35	D25	2½ - 2½
25. F. Mereynolds	W34	L12	W45	L13	D24	2½ - 2½
26. G. Herlich	D28	D46	D29	D37	D27	2½ - 2½
27. R. Harshbarger	L12	D24	W23	D19	D26	2½ - 2½
28. W. Marvin	D26	D9	D19	W17	L8	2½ - 2½
29. R. Latta	L17	W*	D26	W*	L9	2½ - 2½
30. R. Klein	W39	W45	D21	L1	L10	2½ - 2½

Southern California Open, Santa Monica (Continued)

	1	2	3	4	5	Score
31. K. Stani	L45	L20	W33	D44	D41	2 - 3
32. T. Smith	L5	L19	L14	W53	W47	2 - 3
33. K. Commons	L40	L38	L31	W50	W48	2 - 3
34. M. Siero	L25	L35	W53	W41	L14	2 - 3
35. R. DeLaura	L13	W34	D22	D24	L15	2 - 3
36. D. Molnar	W19	L5	L9	W47	L18	2 - 3
37. F. Falkowitz	L10	D39	W52	D26	L17	2 - 3
38. D. Roy	L1	W33	L10	W46	L19	2 - 3
39. C. Henin	L30	D37	W50	L*	L*	1½-3½
40. B. Antman	W33	L1	D43	L*	L*	1½-3½
41. E. Bromley	L22	L11	W*	L34	D31	1½-3½
42. S. Weinbaum	D16	L3	L24	L23	W50	1½-3½
43. P. Heinrich	W24	L13	D40	L8	L22	1½-3½
44. H. Rogosin	D11	D48	L17	D31	L23	1½-3½
45. F. G. Padilla	W31	L30	L25	L*	L*	1 - 4
46. R. Neustadter	D48	D26	L18	L38	L*	1 - 4
47. S. Salter	L21	BYE	L15	L36	L32	1 - 4
48. P. Perillo	D46	D44	L20	L*	L33	1 - 4
49. I. Lyon, Sr.	-	-	-	-	W53	1 - 4
50. D. Steers	D9	L7	L39	L33	L42	½-4½
51. G. Gean	L4	L*	L*	L*	L*	0 - 5
52. G. Hunnex	L3	L16	L37	L*	L*	0 - 5
53. I. Bullockus	L2	L*	L34	L32	L49	0 - 5

SECTION 11

1. D. Cotton	W53	W20	W5	W29	W15	5 - 0
2. L. Portillo	W109	W42	W10	W40	W14	5 - 0
3. J. Katz	W86	W67	D23	W19	W25	4½-½
4. T. Devine	W87	L58	W70	W33	W36	4 - 1
5. R. Engler	W81	W49	L1	W38	W21	4 - 1
6. W. Fleissner	W110	L29	W81	W45	W40	4 - 1
7. P. Klimek	W27	W18	L11	W86	W50	4 - 1
8. A. Levi	L50	W61	W48	W65	W29	4 - 1
9. D. Lucero	W70	W44	W36	L14	W26	4 - 1
10. H. Maeger	W82	W83	L2	W84	W30	4 - 1
11. P. McCarthy	W92	W94	W7	L25	W43	4 - 1
12. R. Newbold	D56	W105	W88	W58	D13	4 - 1
13. L. Neznhi	W71	D28	W89	W62	D12	4 - 1
14. U. Schmidt	W102	W84	W65	W9	L2	4 - 1
15. K. Valdma	W64	W51	W45	W30	L1	4 - 1
16. R. Anthony	W95	D69	L53	W90	W60	3½-1½
17. P. Donahoe	L93	W106	W98	D46	W53	3½-1½
18. M. Flood	W39	L7	D42	W89	W62	3½-1½

Southern California Open, Santa Monica, Section II (continued)

	1	2	3	4	5	Score
19. M. Gazse	W55	D22	W91	L3	W58	3½-1½
20. D. Hinrichsen	W57	L1	W67	W35	D24	3½-1½
21. B. Kohn	W74	D91	W28	W23	L5	3½-1½
22. K. Leonhardt	W75	D19	D52	D60	W73	3½-1½
23. R. Stoutenborough	W103	W79	D3	L21	W57	3½-1½
24. R. Taylor	W26	L65	W55	W79	D20	3½-1½
25. C. Whitman	W78	W50	D58	W11	L3	3½-1½
26. J. Adamson	L24	W104	W96	W*	L9	3 - 2
27. R. Anderson	L7	W103	W92	D57	D41	3 - 2
28. L. Beavers	W38	D13	L21	W56	D51	3 - 2
29. E. Bobanan	W35	W6	W80	L1	L8	3 - 2
30. C. Ditlow	W46	W85	W43	L15	L10	3 - 2
31. C. Fotias	L36	L38	W99	W63	W67	3 - 2
32. P. Glass	W98	L40	W71	D53	D46	3 - 2
33. H. Kaufler	W61	L36	W72	L4	W86	3 - 2
34. J. Kent	L43	D87	D47	W74	W69	3 - 2
35. V. Lambros	L29	W39	W44	L20	W65	3 - 2
36. M. Leglaire	W31	W33	L9	W47	L4	3 - 2
37. T. Levin	W107	L80	L40	W94	W79	3 - 2
38. D. Lubin	L28	W31	W94	L5	W72	3 - 2
39. R. Miller	L18	L35	W108	W98	W71	3 - 2
40. R. Myers	W77	W32	W37	L2	L6	3 - 2
41. S. Parker	L44	W68	D90	W91	D27	3 - 2
42. P. Razien	W97	L2	D18	D69	W82	3 - 2
43. T. Rook	W34	W93	L30	W49	L11	3 - 2
44. V. Saporito	W41	L9	L35	W*	W80	3 - 2
45. D. Sefton	W66	W72	L15	L6	W64	3 - 2
46. Ryan Stoutenborough	L30	W101	W83	D17	D32	3 - 2
47. J. Surlow	L80	W95	D34	L36	W81	2½-2½
48. R. Uchizono	W60	D62	L8	W96	W84	3½-1½
49. R. Walmisley	W63	L5	W66	L43	W68	3½-1½
50. John Whitcomb	W8	L25	W93	W80	L7	3½-1½
51. J. Williams	W76	L15	W*	W*	D28	3½-1½
52. P. Wrangel	W68	D89	D22	L*	W66	3 - 2
53. W. Burkitt	L1	W99	W16	D32	L17	2½-2½
54. C. Castle	L62	L86	W109	W85	D61	2½-2½
55. J. Coan	L19	W59	L24	D101	W89	2½-2½
56. D. Crowther	D12	L88	W87	L28	W90	2½-2½
57. R. Iabre	L20	W107	W85	D27	L23	2½-2½
58. K. Morrissey	W100	W4	D25	L12	L19	2½-2½
59. T. Myer	L91	L55	D101	W87	W88	2½-2½
60. P. Shively	L48	W74	W64	D22	L16	2½-2½
61. D. Slechta	L33	L8	W103	W70	D54	2½-2½

Southern California Open, Santa Monica, Section II (continued)

	1	2	3	4	5	Score
62. B. Weiner	W54	D48	W69	L13	L18	2½-2½
63. A. Alpert	L49	W111	L86	L31	W101	2 - 3
64. D. Bragg	L15	W73	L60	W75	L45	2 - 3
65. C. Carter	W96	W24	L14	L8	L35	2 - 3
66. P. Coleman	L45	W*	L49	W83	L52	2 - 3
67. H. Dubach	W112	L3	L20	W*	L31	2 - 3
68. R Ervin	L52	L41	W111	W100	L49	2 - 3
69. E. Garvin	W101	D16	L62	D42	L34	2 - 3
70. L. Joblon	L9	W112	L4	L61	W96	2 - 3
71. D. Linn	L13	W108	W32	W77	L39	2 - 3
72. D. Martin	W104	L45	L33	W92	L38	2 - 3
73. J. Masamitsu	L89	L64	W*	W78	L22	2 - 3
74. R. Mason	L21	L60	BYE	L34	W100	2 - 3
75. M. Mills	L22	W78	L79	L64	W98	2 - 3
76. B. Murdock	L51	W77	L84	L81	W99	2 - 3
77. D. Narikawa	L40	L76	W95	L71	W94	2 - 3
78. A. Patsch	L25	L75	W104	L73	W 95	2 - 3
79. J. Porter	W111	L23	W75	L24	L37	2 - 3
80. R. Radwin	W47	W37	L29	L50	L44	2 - 3
81. D. Ryder	L5	W109	L6	W76	L47	2 - 3
82. R. Schain	L10	L*	L*	W111	W104	2 - 3
83. A. Thomas	W106	L10	L46	L66	W108	2 - 3
84. M. Tyszler	W90	L14	W76	L10	L48	2 - 3
85. H. Vogt	W99	L30	L57	L54	W97	2 - 3
86. W. Wilson	L3	W54	W63	L7	L33	2 - 3
87. D. Berry	L4	D34	L56	L59	W103	1½-3½
88. J. Brady	D105	W56	L12	L*	L59	1½-3½
89. J. Brown	W73	D52	L13	L18	L55	1½-3½
90. G. Fitzgerad	L84	W97	D41	L16	L56	1½-3½
91. J. Kitsianis	W59	D21	L19	L41	L*	1½-3½
92. K. Arnold	L11	W*	L27	L72	L*	1½-3½
93. L. Bellettini	W17	L43	L50	L*	L*	1½-3½
94. A. Callaway	W108	L11	L38	L37	L77	1½-3½
95. K. Linebaugh	L16	L47	L77	W*	L78	1½-3½
96. G. Lucas	L65	W102	L26	L48	L70	1½-3½
97. C. McNabb	L42	L90	L100	W108	L85	1½-3½
98. J. Narcisi	L32	W100	L17	L39	L75	1½-3½
99. R. Norton	L85	L53	L31	W106	L76	1½-3½
100. C. Schwartz	L58	L98	W97	L68	L74	1½-3½
101. E. Simon	L69	L46	D59	D55	L63	1½-3½
102. H. Vaughan	L14	L96	W106	L*	L*	1½-3½
103. R. Evans	L23	L27	L61	D104	L87	½-4½
104. M. Masters	L72	L26	L78	D103	L82	½-4½

Southern California Open, Santa Monica, Section II (continued)

	1	2	3	4	5	Score
105. M. Sabin	D88	L12	L*	L*	L*	$\frac{1}{2}$ - 4 $\frac{1}{2}$
106. R. Binger	L83	L17	L102	L99	L*	0 - 5
107. E. Hurt	L37	L57	L*	L*	L*	0 - 5
108. P. Pedersen	L96	L71	L39	L97	L83	0 - 5
109. J. Prusinskits	L2	L81	L54	L*	L*	0 - 5
110. R. Singerman	L6	L*	L*	L*	L*	0 - 5
111. R. Snyder	L79	L63	L68	L82	L*	0 - 5
112. L. Gurwin	L67	L70	L*	L*	L*	0 - 5

TOSSAS WINS SAN DIEGO OPEN TITLE

Jose Tossas of San Diego won the San Diego Open in June by winning five straight games and then conceding a draw in the last round to Leo Raterman of Riverside. Tossas thus won \$50, while Raterman and David Anderson of San Diego tied for second and received \$20 each. T. Morris of Lancaster and J. Williamson of San Diego won class prizes.

The tournament was sponsored by the Clairemont Chess Club and was directed by John Alexander (who found himself for once on the side of Management). The cross-table:

SAN DIEGO OPEN, JUNE 22,23, 1968

	1	2	3	4	5	6	Score
1. J. Tossas	W27	W23	W7	W6	W4	D2	5 $\frac{1}{2}$ - $\frac{1}{2}$
2. L. Raterman	W17	W9	W26	D14	W16	D1	5 - 1
3. D. Anderson	W38	W12	W12	L4	W14	W6	5 - 1
4. D. Molnar	W34	W24	W18	W2	L1	D5	4 $\frac{1}{2}$ - 1 $\frac{1}{2}$
5. R. Castle	L18	W42	W17	W15	W12	D4	4 $\frac{1}{2}$ - 1 $\frac{1}{2}$
6. F. Fornoff	W29	W20	W10	L1	W14	L3	4 - 2
7. J. Wilson	W25	W22	L1	W31	D8	D10	4 - 2
8. F. Brock	L30	W32	W28	W26	D7	D16	4 - 2
9. W. Kalber	W15	L2	W20	L10	W19	BYE	4 - 2
10. D. Schey	W41	D30	L6	W9	W18	D7	4 - 2
11. J. Horning	W32	L14	W34	W19	L3	W28	4 - 2
12. S. Luckhardt	W42	W31	L3	W18	L5	W24	4 - 2
13. R. Gardner	W33	L3	L19	W34	W30	W22	4 - 2
14. R. McIntyre	D22	W11	W30	D2	L6	D15	3 $\frac{1}{2}$ - 2 $\frac{1}{2}$
15. J. Williamson	L9	W21	W23	L5	W26	D14	3 $\frac{1}{2}$ - 2 $\frac{1}{2}$
16. R. Mann	W28	L26	W27	W24	L2	D8	3 $\frac{1}{2}$ - 2 $\frac{1}{2}$
17. T. Morris	L2	W41	L5	W39	D28	W27	3 $\frac{1}{2}$ - 2 $\frac{1}{2}$
18. P. Klimek	W5	W19	L4	L12	L10	W31	3 - 3
19. E. Contreras	W21	L18	W13	L11	L9	W34	3 - 3

San Diego Open (continued)

	1	2	3	4	5	6	Score
20. E. Schmidt	W37	L6	L9	W38	W23	-	3 - 3
21. V. Fagin	L19	L15	W25	L28	W39	W32	3 - 3
22. P. Wise	D14	L7	W38	D30	W36	L13	3 - 3
23. M. Thomas	W39	L1	L15	W29	L20	W30	3 - 3
24. H. Krakau	W35	L4	W39	L16	W32	L12	3 - 3
25. H. Woo	L7	L27	L21	W40	W33	W36	3 - 3
26. H. Vogt	W40	L16	L2	L8	L15	D29	2½-3½
27. R. Samuel	L1	W25	L16	D36	W31	L17	2½-3½
28. W. Burkitt	L16	W40	L8	W21	D17	L11	2½-3½
29. B. Hardeman	L6	L37	W40	L23	W35	D26	2½-3½
30. J. Woodward	W8	D10	L14	D22	L13	L23	2½-3½
31. T. Collingwood	W36	L12	W37	L7	L27	L18	2 - 4
32. A. Wright	L11	L8	W41	W33	L23	L21	2 - 4
33. P. Coleman	L13	L39	W35	L32	L25	W40	2 - 4
34. J. Narcisi	L4	W36	L11	L13	W42	L19	2 - 4
35. R. Olson	L24	L38	L33	W41	L29	BYE	2 - 4
36. S. Buffington	L31	L34	W42	D27	L22	L25	1½-4½
37. T. O'Connell	L20	W29	L31	-	-	-	1 - 5
38. O. Higgins	L3	W35	L22	L20	-	-	1 - 5
39. R. Schwartz	L23	W33	L24	L17	L21	-	1 - 5
40. C. Johnson	L26	L28	L29	L25	W41	L33	1 - 5
41. J. Silman	L10	L17	L32	L35	L40	W42	1 - 5
42. R. Laiva	L12	L5	L36	BYE	L34	L41	1 - 5

MORTON SACRAMENTO CITY TITLEHOLDER

Joe Morton, Sr. won the Sacramento City tournament held in May by half a point over three players who were tied for second:

SACRAMENTO CITY TOURNAMENT, MAY 1968

	1	2	3	4	Score
1. J. Morton, Sr.	W10	W8	W6	D2	3½ - ½
2. D. Litowsky	W8	D3	W4	D1	3 - 1
3. C. Parcells	W7	D2	BYE	D5	3 - 1
4. S. Markmon	W9	BYE	L2	W6	3 - 1
5. M. Mattingley	BYE	L6	W7	D3	2½-1½
6. A. DiMilo	W11	W5	L1	L4	2 - 2
7. J. Kirkpatrick	L3	W9	L5	W11	2 - 2
8. S. Bailey	L2	L1	W11	BYE	2 - 2
9. T. Santos	L4	L7	BYE	W10	2 - 2
10. F. Jody	L1	W11	BYE	L9	1 - 3
11. G. Shaffer	L6	L10	L8	L7	0 - 4

RADIATION LAB WINS BAY AREA INDUSTRIAL LEAGUE TEAM TITLE

The six man team from the University of California Radiation Laboratory at Berkeley tied for first place in the 1967-68 team tournament of the Bay Area Industrial League with the San Quentin team and defeated the "Morphys" in a playoff match, $3\frac{1}{2}$ - $2\frac{1}{2}$ on boards plus the usual two points for a victory. Last year's champions, the Pacific Gas & Electric Company "Bishops", finished in third place.

UCRL amassed an imposing point total against all teams except the Bechtel "Rooks" and defeated the strong San Quentin and P.G.&E teams by identical $6\frac{1}{2}$ - $1\frac{1}{2}$ scores. The Morphys amassed an even more imposing score against the other teams, but lost the crucial battle.

High point men were K. Yamamoto of the Champions, with a perfect 10-0 score, and H. Bullwinkel of the Bishops, with 9 points. Dagoberto Romero of the P.G.&E was Chairman of the league for the year, Frank Norton of the P.G.&E assistant Tournament Director, and William G. Addison of the Mechanics' Institute was Adjudicator.

	1	2	3	4	5	6	7	8	9	10	11	Score
1. U.C.R.L.	X	$6\frac{1}{2}$	$6\frac{1}{2}$	2	$6\frac{1}{2}$	6	8	$6\frac{1}{2}$	7	8	6	63 - 17
2. S.Q. Morphys	$1\frac{1}{2}$	X	$6\frac{1}{2}$	6	$6\frac{1}{2}$	$5\frac{1}{2}$	7	8	8	7	7	63 - 17
3. P.G.&E. Bishops	$1\frac{1}{2}$	$1\frac{1}{2}$	X	6	$5\frac{1}{2}$	7	$6\frac{1}{2}$	6	$7\frac{1}{2}$	8	8	$57\frac{1}{2}$ - $22\frac{1}{2}$
4. Bechtel Rooks	6	2	2	X	2	7	4	2	8	8	8	49 - 31
5. Chevron	$1\frac{1}{2}$	$1\frac{1}{2}$	$2\frac{1}{2}$	6	X	6	$1\frac{1}{2}$	4	6	7	6	42 - 38
6. Supershell	2	$2\frac{1}{2}$	1	1	2	X	6	$5\frac{1}{2}$	7	$5\frac{1}{2}$	8	$40\frac{1}{2}$ - $39\frac{1}{2}$
7. Kaiser	0	1	$1\frac{1}{2}$	4	$6\frac{1}{2}$	2	X	$5\frac{1}{2}$	2	7	$2\frac{1}{2}$	32 - 48
8. P.G.&E Knights	$1\frac{1}{2}$	0	2	6	4	$2\frac{1}{2}$	$2\frac{1}{2}$	X	4	6	$1\frac{1}{2}$	30 - 50
9. Friden	1	0	$\frac{1}{2}$	0	2	1	6	4	X	$1\frac{1}{2}$	8	24 - 56
10. Highwaymen	0	1	0	0	1	$2\frac{1}{2}$	1	2	$6\frac{1}{2}$	X	7	21 - 59
11. SQ Chessnuts	2	1	0	0	2	F	$5\frac{1}{2}$	$6\frac{1}{2}$	0	1	X	18 - 62

PLAYOFF MATCH

SQ Morphys	$2\frac{1}{2}$	UCRL	$5\frac{1}{2}$
1. N. Mihailoviki	0	A. Wang	1
2. W. Chamberlain	0	D. Blohm	1
3. E. Albrecht	1	K. Yamamoto	0
4. W. Allen	$\frac{1}{2}$	G. Farly	$\frac{1}{2}$
5. A. McFarlin	1	B. Kortegaard	0
6. E. Deriso	0	R. Bentson	1

GAME OF THE MONTH

The following fighting game was played in the final round of the Southern California Open. It is difficult to convey to the reader the tremendous excitement that the final positions aroused in the minds of all the spectators. Everyone was second-guessing William Bills, the winner, and even the trappy play of Tibor Weinberger, the loser. Bills was given a standing ovation at the conclusion of the game.

SOUTHERN CALIFORNIA OPEN, 1968Game No. 1053 - Pirc Defense

White	Black
<u>W. Bills</u>	<u>T. Weinberger</u>
1. P-K4	P-Q3
2. P-Q4	Kt-KB3
3. P-K4	PxP, PxP,
4. QxQch, KxQ	cedes all winning
chances. In view of the astonishing end game "desire to kill" shown by both antagonists it might well have saved a good deal of time to proceed to the final festivities at this point.	
3. Kt-QB3	
All Robert Fischer ever uses against fianchetto systems and so go we.	
3. . . .	P-KKt3
4. B-Q3	Kt-B3
Avoiding . . . B-Kt2; 5. P-KB4, 0-0; 6. Kt-B3, B-Kt5; 7. P-KR3, BxKt; 8. QxB with a bind.	
5. KKt-K2	B-Kt2
6. P-B3	

A Saemisch relative which has been played against the Pirc in Baytown and Houston chess clubs. Eric Bone and Kenneth Smith have also used systems of attack with B-QB4 but the potentially blunted diagonal this bishop holds, as well as the ever-present fork trick (KtxP) later hardly makes it appealing. Bills is most comfortable in the clash pawn structure and the standard middle

game, which approaches. Weinberger cannot be expected to know this, having only played Bills twice.

6. . . .	0-0
7. B-K3	P-K4

The whole idea is a King's Indian Defense where White omits c4 and gets in B-d3, the latter being of debatable value save for the clearance of the back rank for the lateral action of the Rooks.

8. P-Q5	Kt-K2
---------	-------

. . . Kt-QKt5; 9. B-QB4, P-QR4 is interesting.

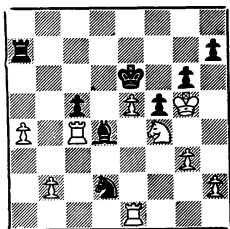
9. Q-Q2	P-B3
---------	------

Weinberger has maneuvered simply to achieve fluid equality as White has to cede his Q5 outpost due to his misplaced KB and the impossibility of supporting Q5 by P-QB4. Tibor, whose unfortunate recent U.S. Championship result is hopefully the mere beginning of major national success, now rather casually subjects White to artificial pressure without really thorough analysis, a form of comfortable drifting from move to move without real planning. It is exactly in these circumstances that Bills' is so dangerous, the case of the violin player vs. the sleeping

- giant.
10. PxP PxB 20. B-R6 QR-Q1
11. O-O 21. P-B4 Kt-Q6
- 0-0-0 castles into the lion's den. 22. BxKt RxB
11. ... P-Q4 23. BxP R-R1
- Necessary and seemingly strengthening Black's position. 11...Q-R4; 24. Kt-B5 R-K6
12. Kt-Q5, or 11...R-Kt1; 12.BxP RxB; 13. QR-Kt1 both favor White. Bad, according to Bills, but really the best drawing possibility, as White is forced to play THE move rather than select from a variety of moves.
12. B-B5 25. KtxB RxB
- A clever prophylactic which harbors a drop of poison. 26. Kt-B5 P-B4
- 12... B-K3 ...P-KKt4 at first appears more promising but 27. P-B5, P-Kt5; 28. K-B2 wins.
13. KR-Q1 P-Q5?! 27. K-B2 RxBKtch
14. Kt-R4 28. KxR BxP
- A Knight on the rim and a lure for the unwary. Bills plays for the text line. 29. P-KKt3 B-K4
14. ... R-K1 30. Kt-Q3
- Despite appearances White's pieces do not function in an orderly manner. As Black now threatens Kt-B1 Kt3 and the immediate Kt-Q2 as well, White sets "Trap No. A4701" from the beginner's manual of survival and repairs his position. Sounder is P-QR3, to free the QR.
15. P-B3 Q-R4 30. ... B-Q5
- A horrible blunder which loses a P without any compensation whatever. 15...PxP in necessary, although White is better. 31. P-K5 PxP; PxP leaves Black helpless.
16. PxP QxQ 31. ... R-R4
- If QxKt; 17. P-QKt3, BxB; 18. PxB, QxP; 19. PxP 32. P-QR4 P-B4
17. RxQ B-R3 33. K-B3 K-B2
- Black is now lost, but amazingly White does not exploit his advantage and allows him to obtain problem like compensation for his material loss. 34. R-B4 Kt-B3
18. R-B2 Kt-Q2 35. R-K1 R-R2
- Desperation. Black invites 19. BxB; 20. RxP, B-K6ch; 21. K-B1, PxP; 22. Kt-B5, Kt-K4. 36. K-B4 Kt-R4
19. PxP KtxP 37. R-B2
- Another blunder. White retains the exchange while giving Black counter-play. 37. RxB, PxR; 38. P-QKt4 wins simply. Fatigue had its effects on both players during this game.
37. ... Kt-Kt6
38. R-B4 K-K3
39. K-Kt5
39. R-K2 (suggested by Bills and Hall) does not win safely, but is answered by ...K-Q4; 40. R/2-B2; Kt-R8; 41. RxPch, BxR; 42. RxBch, K-Q5 followed by ...RxP and draws. Black now has good chances despite his enormous material deficiency

(in effect a full piece) due to White's total misunderstanding of the role of activity in this ending which outweighs all other considerations. Fear not, Bills fans! He rises to grandmasterly tasks in the 11th hour after the endgame has thinned to nothingness and the cigarette smoke thickens. Onward. The test likewise achieves nothing.

39. ... Kt-Q7
40. Kt-B4ch



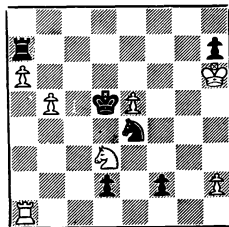
40. ... K-K2

Black could have played ...K-B2 because 41. P-K6ch would lead to a situation fraught with peril to the White King. For example: 41...K-Kt2, threatening ...Kt-B6 mate, compels White to move either the King or the Knight. If 42. Kt-Q5, Kt-B6ch followed by KtxR and now White must play 44. RxB or else Black will fork the King and Rook by Kt-Q6ch and Kt-K4ch. So...41. P-K6ch would leave White a Rook down!

41. RxB PxR
42. R-QR1 Kt-K5ch?
...Kt-B6ch would threaten a mating net with ...R-Q2 and ...K-B3. However, Black gets a lot of mileage out of the line he plays.
43. K-R6 P-Kt4
44. Kt-K2

This move should lose. After Kt-Q3 a draw is likely.

44. ... R-Q2!
45. P-R5 P-Q6
46. Kt-B3 P-Q7
After 46...KtxKt; 47. PxB, P-Q7;
48. R-Q1, P-B5; 49. P-R6, P-B6;
50. P-R7, RxP; 51. RxP, K-K3
and Black's King penetrates on the King-file.
47. Kt-Q1 P-B5
47...R-B2 was a powerful move.
48. PxB PxP
49. P-R6 R-R2
50. P-Kt4 P-B6
51. P-Kt5 P-B7
52. Kt-Kt2 K-K3
53. Kt-Q3 K-Q4



Tibor Weinberger later suggested 53...K-B4; 54. Kt-Kt4, Kt-B6; 55. P-Kt6, P-Q8(Q); 56. RxQ, KtxR; 57. PxB, P-Q; 58. P-Q, Q-B5ch, leading to a draw.

54. P-Kt6 RxP
55. Kt-Kt4ch K-B4

If 55...KxP; 56. KtxR, Kt-B6; 57. P-Kt7, P-Q8(Q); 58. RxQ, KtxR; 59. P-Q CHECK! And 55...K-K3; 56. KtxR, Kt-B6; 57. Kt-B5ch and the Kt returns to stop the little Indians at the pass.

56. KtxRch KxP
57. P-K6

57. Kt-Kt4, Kt-B6; 58. Kt-Q3, P-Q8; 59. RxQ, KtxR; 60. KtxP, KtxKt; 61. P-K6, K-B3; 62. K-Kt7,

K-Q3, 63. K-B7, Kt-Kt5; 64. P-K7, K5; 65. R-QR1 is zugswang.
 Kt-K4ch; 65. K-B8, Kt-Kt3ch draws. 64. KxP Kt-B3
 57. ... K-B3? 65. K-B3 Kt-K1
 ...Kt-B6 draws, but nobody wants to 66. P-R4 P-R3
 draw this game. It is hard to be- 67. P-R5
 lieve that Black, a full Rook down, 67. K-B4, K-B7; 68.RxPch, KxR; 69.
 has the opportunity to set difficult K-B5, K-K6; 70. K-Kt6, K-B5; 71.
 problems. White had to discount KxP, K-B4 only draws.
 many plausible lines which actually 67. ... Kt-Kt2
 win for Black. 68. R-QR1 Kt-K1
 58. R-Q1 69. K-B4 K-K7
 Preparing a superb and forced nine- 70. K-B5 P-Q8(Q)
 teen-move queening combination that 71. RxQ KxR
 is so unusual as to make the game a 72. K-Kt6 Kt-Q3
 rarity in chess history. 73. KxP Kt-B4ch
 58. ... K-Q3 74. K-Kt5 Kt-P
 59. Kt-B5 KxKt 75. P-R6 Kt-B1
 60. P-K7 Kt-Q3 76. P-R7 Kt-Q3
 61. K-Kt5 K-B5 77. K-Kt6 Resigns
 62. K-B4 K-Q6 A fiercely fought game made pos-
 63. K-B3 Kt-K1 sible by the ingenuity of the
 Not ...K-B7 because 64. K-K2, Kt- loser's defense.

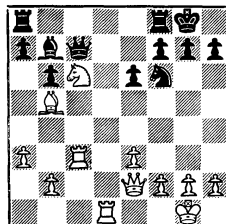
MASTER POINT CHESS,

by Hyman Gordon

The following three positions have been selected from the Spassky vs. Reshevsky game (No. 56) in the Piatigorsky Cup Tournament, 1966. I hope the reader will derive pleasure from solving these challenging situations and earn the chess point for finding the key line of play. The writer will greatly appreciate comments on the problems, particularly if the reader would like to see a book on the subject. Write Hyman Gordon, 6238 Orange Street, Los Angeles, California 90048.

This position will test the skill of the beginner. The beginner should make good combinations and positional moves. A good combination is one involving an effective coordination of the pieces to gain material. A good positional move is one involving effective coordination of the pieces to gain more board space or better timing. Usually the idea for a combination will evolve when there is an edge in board control and when the pieces are poised to cooperate with one

Tyro Chess point



White to Move

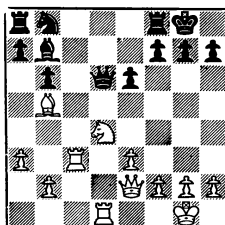
another. Here, White's Rooks control more board space than Black's Rooks. In addition, he has an indirect threat against the Black Queen. How can White gain the exchange for a minor piece?

The Solution:

20. Kt-R5, Q-K2 or Q-Kt1; 21. KtxB, QxKt; 22. B-B6

The expert must make very good combinations and very good positional moves. If he has an edge in mobility, he must know how to coordinate the effective movement of his pieces so that he can evolve a winning plan. In this position White has the advantage in board space and has threats against the Black Queen.

Expert Chess Point



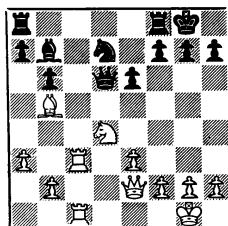
White to Move

How does White win by blending a nice little combination with logical moves? How does White increase the control of the board space by the White pieces and limit the board space control of the Black Pieces?

The Solution:

19. Kt-B6, Q-R2; 20. Kt-R5, Q-K2; 21. KtxB, QxB; 22. Q-B2, Q-K2; 23. R-B7, Q-Kt4; 24. B-Q3, P-KKt3; 25. B-K2 and White wins easily, for Black has no good moves.

Master Chess Point



White to Move

The master player must make the best move in a challenging situation. He must be able to choose the key line from a number of very good lines of play. Before finding the key move or best line of play the champion chessplayer utilizes a fine blend of imagination, logic, courage and inspiration. He also possesses a keen sense of timing and a fine sense of board space. Finally, the master plans ahead and rejects many lines of play that appear good.

The master player applies specific techniques to aid in finding the best line of play. Novel ways of pinning pieces, quiet positional moves that may appear awkward at first but are a part of a larger concept to restrict the enemy's movement; exchanging pieces as if seeking a draw, sacrificing pieces to disrupt the enemy pawn position; and imaginative ways to coordinate the power of his pieces are a few of the tactics used by

the master. In the above position, a high degree of logic and some subtle strategy must be used to earn the master point.

The solution:

18. R-Q1
 A very difficult move to see. It then 20. P-K4 wins. If ..Q-B2, looks like a retreating for White from the original position. White must logically anticipate at least six defensive lines of play for Black by moving the Queen or Knight and see the winning plan. White must evaluate the indirect pinning threats against the Black Queen and Knight. Whitest must not only be logical to make the move R-Q1 but also a little inspired.
 18. ... Kt-B4
 19. Kt-Kt3
 Q-K4
 compensation for the loss of a P.

<u>North vs South, 1968</u>		<u>GAMES</u>	
<u>Game No. 1054 - Robatsch</u>			
White	Black		
<u>R. Burger</u>	<u>J. Lazos</u>		
(Board No. 1)			
1. P-K4	P-KKt3	19. P-Q5	P-B5
2. P-Q4	B-Kt2	20. P-K5	PxB
3. Kt-QB3	P-Q3	21. QxP	Kt-R4
4. Kt-B3	Kt-B3	22. B-R2	QR-B1
5. B-K3	P-B3	23. P-Kt4	KKt-B3
6. Q-Q2	Q-R4	24. PxB	QxP
7. B-K2	Kt-K5	25. Kt-K4	Q-Kt3
8. B-KKt5	Kt-Q2	26. Kt-Q6	DRAWN
9. BxP	Q-B2		
10. B-Kt5	0-0	<u>Game. No. 1055 - Four Knights</u>	
11. P-KR3	KKt-B3	White	Black
12. 0-0	R-K1	<u>H. Gross</u>	<u>I. Rivise</u>
13. B-Q3	P-QR3	(Board No. 3)	
14. KR-K1	P-Kt4	1. P-K4	P-K4
15. P-R3	B-Kt2	2. Kt-KB3	Kt-QB3
16. P-QKt4	P-B4	3. Kt-B3	Kt-B3
17. KtPxP	PxP	4. P-Q4	P-Q3
18. B-KR4	Q-Kt3	5. PxP	KtxP
		6. KtxKt	PxKt
		7. QxQch	KxQ
		8. B-KKt5	P-B3
		9. 0-0-0ch	K-K
		10. P-B4	P-KR3

11. B-R4	B-Kt5	27. R-R4	QxP
12. R-K	PxP	28. QxQ	RxQ
13. P-Kt5	Kt-Q2	29. RxP	R-Kt7
14. Kt-K4	Kt-B4	30. RxKP	RxP
15. Kt-Q6ch	BxKt	31. R-K7	R-Kt8ch
16. PxBch	Kt-K3	32. K-B2	P-Kt6
17. B-K7	K-Q2	33. QR-Q7	R-Kt1
18. B-Q3	Kt-B4	34. RxPch	K-B1
19. B-K4	B-K3	35. QR-B7ch	K-K1
20. P-KR4	Kt-R5	36. R-K7ch	DRAWN
21. KR-B	Kt-B4		
22. RxP	KtxB		
23. R(4) xKt	P-QKt4		
24. DRAWN			

Game No. 1057 - Robatsch

White Black

A. Jones S. Van Gelder

(Board No. 8)

Game No. 1056 - Sicilian

White Black

J. Corthell G. Barrett

(Board No. 8)

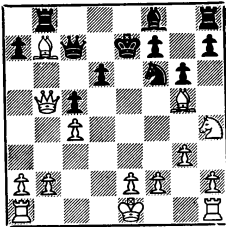
1. P-K4	P-QB4	1. P-K4	P-Q3
2. Kt-KB3	P-Q3	2. P-Q4	P-KKt3
3. P-Q4	PxP	3. P-QB4	B-Kt2
4. KtxP	Kt-KB3	4. Kt-QB3	Kt-KB3
5. Kt-QB3	P-QR3	5. P-B4	P-B4
6. B-K2	P-K3	6. P-Q5	0-0
7. P-KB4	B-K2	7. Kt-B3	Kt-R3
8. 0-0	0-0	8. B-K2	Kt-B2
9. B-K3	P-QKt4	9. 0-0	P-QR3
10. B-B3	P-K4	10. P-QR4	R-Kt1
11. Kt-B5	Kt-B3	11. R-K1	P-K3
12. P-QR4	P-Kt5	12. P-K5	Kt-K1
13. Kt-Q5	KtxKt	13. Kt-K4	BPxQP
14. PxKt	BxKt	14. BPxP	B-B4
15. PxKt	P-K5	15. Kt-B3	P-QKt4
16. B-Kt4	Q-B1	16. PxKtP	RPxP
17. BxB	QxB	17. B-K3	P-Kt5
18. B-Kt6	P-QR4	18. Kt-QR4	B-K5
19. Q-K2	KR-Kt1	19. PxP	KKtxP
20. B-Q4	Q-Q4	20. BxP	KtxP
21. QR-Q1	QxP	21. Kt-K5	KtxP
22. P-QKt3	P-Q4	22. BxKt	BxKt
23. P-B5	P-B3	23. BxB	Q-Kt4
24. R-B4	B-B4	24. B-Kt4	QxQB
25. K-B1	BxB	25. B-B3	P-B4
26. RxB	R-QB1	26. BxB	PxB
		27. Q-Kt3	K-Kt2
		28. Q-B4	P-K6
		29. P-Kt3	KtxP
		30. Kt-B5	KtxR

31. Kt-K6 K-R1
RESIGNS

AMERICAN OPEN, 1967

Game No. 1058 - Catalan

White	Black
<u>E. Pruner</u>	<u>N. Wood</u>
1. P-Q4	Kt-KB3
2. P-QB4	P-K3
3. P-KKt3	P-B4
4. Kt-KB3	P-QKt3?
5. B-Kt2	B-Kt2
6. P-Q5	PxP
7. Kt-R4	P-Kt3
8. Kt-QB3	P-Q3
9. B-Kt5	QKt-Q2
10. KtxQP	R-QKt1
11. KtxKtch	KtxKt
12. Q-R4ch	P-Kt4
13. QxPch	K-K2
14. BxB	Q-B2



In this position, White makes a move which reminds us of Game No. 53, (Vol 1, No. 5 - November 1951) in which A. Nimzovitch made the brilliant move 18.Kt-R1! (the move devastated A. Rubinstein) - and also reminds us of Game No. 867 (Vol XIV, No. 8 - June 1965) in which Charles Henderson compelled Dr. Ralph Hultgren's resignation with 22...Kt-R1!

15. Kt-Kt2! RxB
16. Kt-B4 Q-B1
17. Q-R6 B-Kt2

18. 0-0-0 R-Q2
19. Kt-Q5ch K-K3
20. Q-R3 Kt-K5
21. Q-K3 P-B4
22. P-B3 B-Q5
23. RxB PxR
24. QxP Q-B4
25. Kt-B4ch K-B2
26. QxR QxPch
27. K-Kt1 KtxB
28. R-QB1 Q-R5
29. P-KR4 RESIGNS

WEST COAST OPEN

Game No. 1059 - Sicilian

White	Black
<u>T. Weinberger</u>	<u>J. Blackstone</u>
(notes by John Blackstone)	
1. Kt-KB3	P-KKt3
2. P-K4	P-QB4
3. P-Q4	PxP
4. QxP	P-B3?!

This is not particularly good but it was played once before by Lasker in his match with Schlechter.

5. B-QB4 Kt-B3
6. Q-Q3 B-Kt2
7. P-KR4 Kt-R3
8. Kt-B3 Kt-B2
9. B-Kt3 P-Q3

Black must control his K4 or his position would fall apart.

10. Kt-Q5 P-B4

Black must undertake something or White would build up an overwhelming position by Kt-B4-K6.

11. Kt-B4 PxP
12. BxKt ch

This move came as a surprise. I had planned to meet 12.QxKP by Q-R4ch and Q-KB4.

12. ... KxB
13. Kt-Kt5ch K-K1
14. QxKP B-B4
15. Q-B4

Not 15.Q-Q5 because of Q-R4ch. White's

plans for the last few moves have been held up by this last move but now Black's position has become critical.

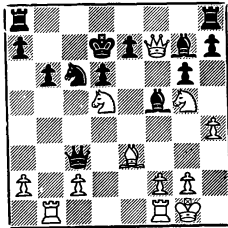
- 15. ... Q-R4ch
- 16. B-Q2 Q-K4ch
- 17. B-K3 QxP

Black must do something. But this is risky as it opens the QKt file for White.

18. 0-0 Q-B6
 Not 18...QxR; 19.RxQ,BxR because of 20.P-B3 and Black has no good move.

19. Q-B7ch
 This came as a surprise once more, I had expected 19.Q-Kt5.

- 19. ... K-Q2
- 20. QR-Kt1 P-Kt3
- 21. Kt-Q5!



This move wins the exchange because if 21...Q-K4, then 22.P-KB4 wins a piece.

- 21. ... KR-KB1!
- 22. QxR RxQ
- 23. KtxQ BxKt
- 24. R-Kt3

If 24.KtxP, R-R1; 25.Kt-Kt5, B-K4 and White eventually loses his QBP.

- 24. ... B-Kt2
- 25. P-QB3 Kt-R4
- 26. R-R3 P-KR3
- 27. Kt-B3 R-QB1

White must have had a win in here

someplace, or at least Weinberger and Benko think so, but they didn't tell me where. But now the tables are reversed. With Black's 2 Bishops controlling most of the squares on the Q side and with White's Rook completely out of play on the Q-side he should lose. Black's idea consists of playing P-Q4 and K4, K-Q3, B-Q2 and K-B1 and K-K3 winning the Rook but he stumbles along the way.

- 28. B-Q4 P-K4
- 29. B-K3 P-Q4
- 30. R-K1 B-Q6?

The move before I considered 30. BxRP but decided it lost for White now I make a move that allows it. Either 30...K-Q3 or R-B2 is better. The time scramble now starts and lasts to move 45.

- 31. BxRF! BxB
- 32. KtxPch K-Q3
- 33. Kt-B7ch K-B4
- 34. KtxB R-B2

Better is 34...R-R1 though it still loses in the long run.

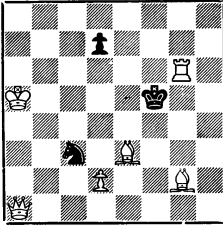
- 35. Kt-Kt4 Kt-B5
- 36. R-Kt3 B-B7

Winning back the exchange but it does not change the pending result any.

- 37. Kt-K5 BxR
- 38. PxB Kt-Q7
- 39. KtxP KtxP
- 40. P-R5 P-R4
- 41. Kt-K7 R-R2
- 42. P-R6 R-R1
- 43. Kt-Kt6 R-R2
- 44. R-K7 RxR
- 45. KtxR P-R5
- 46. P-R7 P-R6
- 47. P-R8-Q P-R7
- 48. Q-B8ch K-Q3
- 49. Q-Q8ch K-R3
- 50. Q-KtPch KxKt...

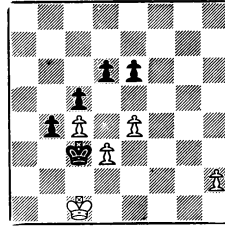
TASKS:

No. 277
 J. Buchwald
 First Prize, U.S. Problem Bulletin
 1967



Mate in 3

No. 278
 A. Simones
 1941



White to play and win

Attack and Defense in the Same Move

Every good move assumes some consideration for the opponent's reply - hence the strongest move is often not the most obviously aggressive. Studies and problems make this clear. They are balanced in such a way that the opponent's (or Black's) defenses are more subtle than is ordinarily the case. In the study at right, for example, 1. P-K5, PxP; 2. P-R4, P-K5; 3. P-R5, P-K6 wins for Black. In the three-mover, White's first move, although not overly subtle, must provide for KxR. The particular beauty of problems like this is that the key move has a balance of attack and defense in it.

Incidentally, the Buchwald problem is in the final issue of the U.S. Problem Bulletin, whose demise has been foretold by the disappearance of problem columns in many leading magazines.