

THE CALIFORNIA CHESS REPORTER

VOL. III, No. 8

\$1.50 per year

May, 1954

The California Chess Reporter - Ten numbers per year

Official Organ of the California State Chess Federation

Editor: Guthrie McClain, 244 Kearny Street, San Francisco 8

Associate Editors: Bob Burger, Lafayette; Valdemars Zemitis,
Dr. Mark W. Eudey, Berkeley; Neil T. Austin,
Sacramento; Francis Crofut, San Jose;
George Goehler, Irving Rivise, Los Angeles

Task Editor: Dr. H. J. Ralston

Games Editor: N. E. Falconer, Lafayette

Guest Annotator: Imre König, San Francisco

CONTENTS

California Women's		So. Calif Championship	144
Championship	137-138	U.S. Junior Championship	145
S.F. vs East Bay Match	138-139	2nd Pan-Am. Tournament	145-146
Russian Club vs San Quentin	140	U.S. Open Championship	146
König Lectures	140	Calif. State Championship	146
Chess Friends Open	141	Calif. Open Championship	147
Game of the Month	142-143	Games	147-151
Tournament Calendar	144	Reporter Tasks	152

SONJA GRAF CALIFORNIA WOMEN'S CHAMPION

The 1954 California Women's Championship, played between April 19 and May 1 at the Hollywood Chess Group, was won very convincingly by Sonja Graf Stevenson with a perfect score of 8-0. Tied for second and third were Mrs. L. Grumette and Mrs. G. Piatigorsky, with $6\frac{1}{2}$ - $1\frac{1}{2}$ scores. Nine women, all from southern California, competed in the round robin event.

Mrs. Stevenson, who was runner-up to the late, great world's champion Vera Menchik in Buenos Aires, 1939, was clearly the class of the tournament. Her aggressive style and great experience make Mrs. Stevenson a formidable opponent for any master, and she would doubtless be the favorite in the U.S. Women's Championship any time she were able to go East to compete.

	1	2	3	4	5	6	7	8	9	Score
1. Mrs. Sonja Graf Stevenson	X	1	1	1	1	1	1	1	1	8-0
2.) Mrs. L. Grumette	0	X	$\frac{1}{2}$	1	1	1	1	1	1	$6\frac{1}{2}$ - $1\frac{1}{2}$
3.) Mrs. G. Piatigorsky	0	$\frac{1}{2}$	X	1	1	1	1	1	1	$6\frac{1}{2}$ - $1\frac{1}{2}$
4. Mrs. O. Higgins	0	0	0	X	1	1	0	1	1	4-4
5.) Miss F. Frazier	0	0	0	0	X	$\frac{1}{2}$	1	1	1	$3\frac{1}{2}$ - $4\frac{1}{2}$
6.) Miss F. Oswald	0	0	0	0	$\frac{1}{2}$	X	1	1	1	$3\frac{1}{2}$ - $4\frac{1}{2}$
7. Mrs. M. Harmat	0	0	0	1	0	0	X	1	1	3-5
8. Miss H. Page	0	0	0	0	0	0	0	X	1	1-7
9. Mrs. M. Shepard	0	0	0	0	0	0	0	0	X	0-8

SAN FRANCISCO vs. EAST BAY TEAM MATCH

San Francisco $14\frac{1}{2}$ -East Bay $11\frac{1}{2}$: On May 15, 1954, the annual team match between San Francisco and the Peninsula on one side and the East Bay and valley points on the other side produced one of the close, hard fought contests for which this event has come to be noted. As usual, the San Francisco side won; and as usual, the East Bay team went home wondering what had happened.

The East Bay started off with a rush, piling up a three-point lead early in the evening. But the west team gradually forged ahead and eventually won fairly handily. Just before the end, the west needed a bare half-point to clinch a tie, but with three games going it was not clear where it was going to come from! The score was $12\frac{1}{2}$ - $10\frac{1}{2}$ and the three games were Gross-Hendricks, where Gross was playing without his Queen; Falconer-Addison, where Falconer was pushing two passed pawns; and Olvera-Leeds, in which the result was in doubt.

The first break came when Leeds pushed a pawn to victory. The west now had the win clinched with $13\frac{1}{2}$ points. The remaining games were anti-climactic, but were played out to the bitter end with Gross and Falconer the winners, thus adding a point to each side and giving San Francisco the comfortable-appearing margin of three points.

SAN FRANCISCO vs EAST BAY TEAM MATCH

<u>SAN FRANCISCO</u>		<u>EAST BAY</u>		
1.	J. Schmitt	$\frac{1}{2}$	V. Zemitis	$\frac{1}{2}$
2.	D. Poliakoff	1	R. Burger	0
3.	W. Addison	0	N. Falconer	1
4.	C. M. Capps	1	C. McClain	0
5.	E. Pruner	1	C. Bergman	0
6.	H. Gross	1	W. Hendricks	0
7.	R. P. Willson	0	C. Stamer	1
8.	C. Svalberg	0	C. Sedlack	1
9.	P. Petersen	$\frac{1}{2}$	R. Trenberth	$\frac{1}{2}$
10.	J. Petriceks	$\frac{1}{2}$	E. Simanis	$\frac{1}{2}$
11.	M. Rudniansky	1	J. Kalnins	0
12.	C. Bagby	$\frac{1}{2}$	C. R. Wilson	$\frac{1}{2}$
13.	F. Arvidson	0	R. Freeman	1
14.	Dr. E. Wrany	$\frac{1}{2}$	J. Fredgren	$\frac{1}{2}$
15.	T. Eisenstadt	0	N. Hultgren	1
16.	D. Peizer	1	S. Poulsen	0
17.	L. Tomori	$\frac{1}{2}$	N. Pree, Jr.	$\frac{1}{2}$
18.	P. Prokoodin	1	E. Yaeger	0
19.	G. Olshausen	0	E. Lien	1
20.	C. Huneke	0	C. Fontan	1
21.	W. Leeds	1	F. Olvera	0
22.	W. Shugert	1	W. Whisler	0
23.	H. S. King	$\frac{1}{2}$	R. Guzman	$\frac{1}{2}$
24.	Dr. M. Korshet	1	W. Landfair	0
25.	G. Lutz	1	J. W. Maier	0
26.	D. Buchanan	0	G. Hultgren	1
		$\frac{14\frac{1}{2}}$		$\frac{11\frac{1}{2}}$

CANADIAN CHESS CHAT

Canadian Chess Chat is the Official Organ of the Chess Federation of Canada. It is the only publication with complete Canadian coverage: Events, Games, Articles and Personalities.

Annual subscription, \$2.75. Editor-Publisher: D. A. MacAdam,
2084 Decarie Blvd., Montreal 28, Quebec, Canada

RUSSIAN CHESS CLUB vs. SAN QUENTIN by Peter Prokoodin

The Russian Chess Club of San Francisco, augmented by several players from the Mechanics Institute, journeyed to San Quentin Prison on Saturday, May 8, 1954 for a 19-man team match. The match started at 10:30 A.M. All games were played to a finish and conducted in a very amicable way.

The San Quentin management and the host team showed fine courtesy in every respect to their guests. After the match the visiting team were treated to a very good lunch, which everybody enjoyed greatly.

RUSSIAN CHESS CLUBSAN QUENTIN CHESS CLUB

1. Mike Rudniansky	1	David Hansen (Captain)	0
2. Jim Schmitt	1	Zamubio	0
3. Earl Pruner	1	Green	0
4. Anatol Palmin	1	Kerr	0
5. Charles Svalberg	1	White	0
6. Wilber Leeds	1	Benevides	0
7. Peter Prokoodin (Captain)	1	Delehanty	0
8. Andrew Tokmakoff	1	Hagenios	0
9. Dr. Ernst Wrany	1	Magidow	0
10. Dmitry Shishkin	0	Snider	1
11. G. Lutz	1	Williams	0
12. Alfred Johnson	1	Corrigan	0
13. H. Bullwinkel	0	Sensell	1
14. H. S. King	1	Balbuena	0
15. Paul Andreeff	0	Sorentino	1
16. Mike Razumoff	0	Gonzales	1
17. Karl Bopp	1	Krollenberg	0
18. John Wingate	0	Fiches	1
19. Bert Ehrlich	<u>0</u>	Davis	<u>1</u>
Total	13		6

KÖNIG LECTURES International master Imre König gave the first of a series of chess lectures on Saturday, May 23, 1954, at the Golden Gate Chess Club. The series will continue in June on dates to be announced, and will deal with the games played in the Botvinnik vs. Smyslov world championship match. The games will be considered in groups, arranged according to openings. The lectures

are sponsored by the San Francisco Bay Area Chess League and the Golden Gate Chess Club. At the first lecture, about thirty persons paid 50¢ each to see a comparison between two Nimzo-Indian games; Botvinnik-Bronstein, 1951, and Botvinnik-Smyslov, 1954.

CHESS FRIENDS OF NORTHERN CALIFORNIA OPEN May 1-2, 1954

By drawing his last round game with last year's winner, Bob Burger annexed the "A" Class title in this five-round Swiss event. Valdemars Zemitis came second, one-half point behind the winner with 4 points, ahead of Charles Fontan and Robert Bloom, also with four points, by virtue of Sonneborn points. Zemitis' first round draw with Connor Schroth, who finished fifth, turned out to be the deciding factor. The younger players, Petriceks, Ramirez, Eisenstadt, and Shugert were all in the running until they met the eventual prizewinners.

James Stowe of San Pablo swept the "B" section with five wins, with Charles McGinley of Oakland second and the young Concord player Billy Whisler third.

In the "C" section Walter Landfair of Oakland allowed one draw to come ahead of Ben Zeiler and Tom Tripodes.

The event attracted some eighty players from the Bay Area. Cash prizes were awarded in the "A" section, and special book prizes in the other divisions. Lloyd Lund came up from Shandon to direct the tournament, and was assisted by Leah Koltanowski.

CHESS FRIENDS OF SOUTHERN CALIFORNIA OPEN

Veteran George Chase added another title to his collection by winning the Class "A" Swiss held at the Los Angeles Water and Power Chess Club on March 27-28 and April 3-4, 1954. There followed: 2) Ralph Syvertson, 3) Ray Martin, 4) George McMayon and 5) Calving Taber. A radio match with Northern California on ten boards each in Class "A", Class "B" and Class "C" is the next scheduled event.

GAME OF THE MONTH by Valdemars Zemitis

The recently concluded Botvinnik-Smyslov Championship match followed the course of the Botvinnik-Bronstein match in several ways. But besides the drawn outcome of both and the rapid change of the lead, the most significant feature of both was the necessity of Botvinnik's opponents to resort to tactical complications. In Bronstein's case this was natural; but Smyslov has always been the master of positional chess leading to razor-fine endings. And when Botvinnik the strategist had completely stifled Smyslov's positional attempts of the early games, the challenger's reversal of style was striking. Gruenfelds and Nimzo-Indians now disappeared in favor of King's Indians, with a typical result being the following bright encounter:

14TH MATCH GAMEGame No. 228 - King's Indian

with ample King-side play for Black.

White	Black
<u>M. Botvinnik</u>	<u>V. Smyslov</u>
1. P-Q4	Kt-KB3
2. P-QB4	P-KKt3
3. P-KKt3	

6. ... QKt-Q2
In recent years Kkt-Q2 has also been played with success.

7. O-O P-K4

8. P-K4

P-QKt3 is also good.

8. ... P-B3

Tournament praxis has shown that it is a matter of individual taste where to develop the King's Bishop. While the Russians in general prefer to fianchetto it, the Westerners seem to like P-K4 and B-K2.

And here R-K1 with pressure on the King file is playable.

9. B-K3

3. ... B-Kt2

4. B-Kt2 O-O

5. Kt-QB3 P-Q3

6. Kt-B3

In this position Botvinnik usually adopted the line P-KR3, and only then B-K3, but this allows Black to play the Exchange Variation with advantage. The immediate B-K3 was played by Botvinnik in the Absolute Russian Championship of 1941, and has since been seen in the more recent Reshevsky-Najdorf match.

9. ... Kt-Kt5

10. B-Kt5 Q-Kt3

It is noteworthy that in the 16th match game Botvinnik deviated here with 6. P-K3 and after QKt-Q2, 7. Kkt-K2, P-K4; 8. P-Kt3, R-K1; 9. B-R3 had a slight opening advantage. On the other hand White cannot very well play 6. P-K4, for there follows P-K4; 7. Kkt-K2, Kt-B3; 8. P-Q5, Kt-K2

Instead of the customary P-B3, Smyslov enters into uncharted complications.

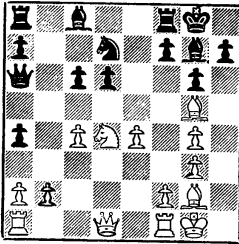
11. P-KR3 Pxp!

The Knight retreats with great loss of time.

12. Kt-QR4 Q-R3
13. PxKt

This very sharp line seems to be in Black's favor. KtxP might have been better.

13. ... P-Kt4
14. KtxP PxB



15. KtxP!

This looks like assassination but is actually suicide. But also if 15. B-K7, R-K1; 16. BxP, QxP and Black has the better game.

15. ... QxKt
16. P-K5 QxP
17. BxR KtxP
18. R-B1

The alternative QxQP, BxP does not look rosy for White either.

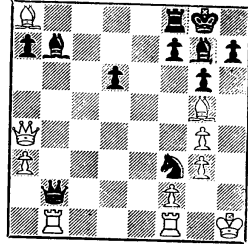
18. ... Q-Kt5
19. P-R3

If White could foresee the role the Black Knight would play in the sequel, he would certainly play here 19. B-K7, R-K1; 20. BxP to be followed by BxKt with drawing chances.

19. ... QxKtP(7)
20. QxRP B-Kt2!

Anticipating the following sharp combination. Of course, BxB leaves White defenseless.

21. R-Kt1 Kt-B6ch
22. K-R1



22. ... BxB!

One surprise after another!

23. RxQ KtxBch
24. K-R2 Kt-B6ch
25. K-R3 BxR

After the dust has settled the material remains approximately equal; but with the wonderful posts the Black pieces command White awaits a slow death.

26. QxP B-K5
27. P-R4 K-Kt2
28. R-Q1 B-K4
29. Q-K7 R-B1
30. P-R5 R-B7

White's passed Pawn is his only hope, and Black doesn't even go to the trouble of noticing it.

31. K-Kt2 Kt-Q5ch
32. K-B1 B-B6
33. R-K1 Kt-B3!
34. Resigns

A forceful finish. The threat of B-Q5 is too much.

TOURNAMENT CALENDARNORTHERN CALIFORNIA CHAMPIONSHIP

The Northern California Championship, which is also a qualifying preliminary for the State Championship, will be a 9-round Swiss, to be staged over three consecutive week ends in June. Play will alternate between the Mechanics' Institute and the Golden Gate Chess Club (Hotel Cecil). Entry fee: \$5. CSCF membership required; membership may be obtained upon entering. First prize: trophy. All receipts will be carried over to the prize fund of the State Championship. The first three to qualify will be entered in the State Championship finals.

The time limit will be 40 moves in 2 hours, and 20 moves per hour subsequently. The dates of play:

Saturday, June 12:	Sign-up and first round, 1:00 P.M.
	Second round, 8:00 P.M.
Sunday, June 13:	Third round, 1:00 P.M.
Saturday, June 19:	Fourth round, 1:00 P.M.
	Fifth round, 8:00 P.M.
Sunday, June 20:	Sixth round, 1:00 P.M.
Saturday, June 26:	Seventh round, 1:00 P.M.
	Eighth round, 8:00 P.M.
Sunday, June 27:	Ninth round, 1:00 P.M.

The sign-up and first round will take place at the Mechanics' Institute. Subsequent rounds will alternate between the Mechanics' Institute and the Golden Gate club in a rotation to be voted by the players.

It will be possible to play rounds 3, 4, 6, and 7 on days other than the scheduled days by mutual agreement of both players involved; rounds 3 and 6 may be played during the week following the pairing, and rounds 4 and 7 may be played in advance.

SOUTHERN CALIFORNIA CHAMPIONSHIP

To be announced. This tournament is also a qualifying preliminary for the State Championship. Since other scheduled tournaments take up most of the time between the North-South match on May 30 and the State Championship in September, it is likely that the Southern California Championship will also be scheduled for June.

U.S. JUNIOR CHAMPIONSHIP

The U.S. Junior Chess Championship, sponsored by the Lincoln Park Chess and Checker Club of Long Beach, will be played at Long Beach from June 29 through July 9. Participants must be under 21 years of age at the time of entry and must be a member of the USCF. No entrance fee will be required. All entrants should furnish the following information to John P. Looney, secretary: Full name, address, street, city, zone, State, and name of parents or nearest relatives, with their address and telephone number. According to Looney, the first 40 entries will receive free lodging. Write Looney, Lincoln Park Chess Club, Lincoln Park, Long Beach 2, Calif. Long Beach 709302.

SECOND PAN-AMERICAN OPEN CHESS TOURNAMENT

In a recent meeting of the committee for the Second Pan American International Open Chess Tournament, to be played at the Hollywood Athletic Club, 6525 Sunset Boulevard, July 10-24 inclusive, the directors agreed to the following prizes and rules:

Prize List for Masters: First, \$1,000; second, \$750; third, \$500; fourth, \$400; fifth, \$300; sixth, \$250; seventh, \$200; eighth, \$150; ninth, \$100; tenth, \$50; totaling \$3700.

Master Candidates: First, \$150; second, \$100; third, \$75; fourth, \$50; fifth, \$25; totaling \$400.

Ladies: Two cups \$50.

Qualifications of Players:

Section 1: Recognized and qualified master players with U.S. Chess Federation ratings of not less than 2300 or equivalent ratings with other organizations.

Section 2: Master candidates for players with USCF ratings from 2100 to 2299 inclusive or equivalent.

Section 3: Group A players having USCF ratings from 1900 to 2099 inclusive or equivalent.

Section 4: Group B players having USCF ratings from 1700 to

1899 inclusive or equivalent.

Section 5: Group C players having USCF ratings from 1500 to 1699 or equivalent.

Section 6: Group D players having USCF ratings lower than 1500.

For players not rated by USCF, California Chess Federation ratings will be used. For players not having recent ratings a committee consisting of Dr. H. J. Ralston, John Keckhut, Neil T. Austin and Francis Crofut has been appointed to determine players' eligibility for the different groups. Entry fee of \$15 must be enclosed with all registrations.

For further information write to the Hollywood Chess Group, 108 North Formosa Avenue, Los Angeles 36, or call Webster 18817 or Wyoming 3510.

U.S. OPEN CHAMPIONSHIP

The U.S. Open Championship Tournament for 1954 will be held in New Orleans, Louisiana, August 2-14 inclusive. The sponsors are the Louisiana Chess Association and the USCF. The tournament will be played at the Roosevelt Hotel. The tournament will be a 12-round Swiss System, according to Mrs. C. L. Daniel, publicity director. The requirement is membership in USCF. For details write A. L. McAuley, 4225 South Liberty Street, New Orleans, Louisiana.

CALIFORNIA STATE CHAMPIONSHIP

The State Championship will be played over the Labor Day week end, September 4-6, at the Mechanics' Institute in San Francisco. It will be a 10-man round robin. Games between players from the same section of the State will be played in advance.

The ten participants will be: Herman Steiner (1953 State Champion), Eugene Levin (1953 Open Champion), four players from the Southern California qualifying tournament, three players from the Northern California qualifying tournament, and one player from the Central California qualifying tournament.

CALIFORNIA OPEN CHAMPIONSHIP

The Open will be held at Santa Barbara at the same time as the State Championship, September 4-6. The tournament will be a 7-round Swiss, and will be directed by Guthrie McClain. The rounds will be: Saturday, September 4, Round I at 10:00 A.M.; Round II at 2:30 P.M.; Round III at 7:30 P.M. Sunday, September 5, Round IV at 1:30 P.M.; Round V at 7:30 P.M. Monday, September 6, Round VI at 9:00 A.M.; Round VII at 1:30 P.M.

Rate of play: Rounds I and II, 30 moves in the first two hours and 15 moves per half hour thereafter; subsequent rounds, 40 moves in the first two hours and 10 moves per half hour thereafter. Entry fee: \$5. Prizes: Trophy plus cash (all entry fees go toward prizes).

Play will be in the "Mantilla Room" of the Californian Hotel. Rooms at the Californian range from \$3.00-\$4.50 single and \$4.50-\$8.00 double. The hotel is one block from the beach, and rooms with an ocean exposure will be on the quiet side. Since the Labor Day week end is the very peak of the summer season in Santa Barbara, it will be advisable to reserve accommodations as early as possible. Reservations with a \$5.00 deposit received prior to August 10 will be accorded priority.

L.A. COUNTY CHAMPIONSHIP - 1954

Game No. 229 - K's Indian

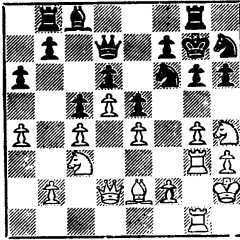
White	Black
S. Almgren	R. Gross

- | | |
|-----------|--------|
| 1. P-Q4 | Kt-KB3 |
| 2. P-QB4 | P-KKt3 |
| 3. Kt-QB3 | B-Kt2 |
| 4. P-K4 | P-Q3 |
| 5. Kt-B3 | O-O |
| 6. B-K2 | P-K4 |
| 7. B-Kt5 | QKt-Q2 |
| 8. O-O | P-QB3 |
| 9. Q-Q2 | Q-B2 |
| 10. KR-Q1 | R-K1 |
| 11. P-Q5 | P-B4 |

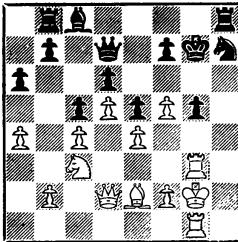
Forced.

- | | |
|-----------------------------------|---------------|
| 12. QR-Kt1 | K-R1 |
| 13. P-KR3 | P-QR3 |
| 14. B-R6 | R-QKt1 |
| 15. P-QR4 | Kt-Kt1 |
| 16. BxBch | KxB |
| 17. P-KKt4 | KKt-B3 |
| 17....P-B3; 18... Kt(Q2)-B1; and | |
| 19... Q-B2 seems better. | |
| 18. K-R2 | Kt-B1 |
| 19. R-Kt1 | Q-Q2 |
| 20. R-Kt3 | P-R3 |
| 21. QR-Kt1 | Kt(1)-R2 |
| 22. Kt-R4 | R-KKt1 |
| | (See diagram) |
| 23. Kt-B5ch! | PxKt |
| 24. PxPch | Kt-Kt4 |
| If 24... K-R1; 25. QxP, RxR; 26. | |
| RxR, Kt-K1; 27. P-B6, Q-Q1; 28. | |
| R-Kt7, Kt(K1)xP; 29. RxBP, Q-Kt1; | |
| 30. RxKt and wins. | |

Position after 22... R-KKt1



25. P-R4 R-KR1
 Not 25... Kt(B3)-R2; 26. PxKt,
 PxP; 27. RxPch winning.
 26. PxKt PxP dis ch
 27. K-Kt2 Kt-R2



28. RxPch! K-B1
 28... KtxR; 29. QxPch, K-B1; 30.
 K-B1 (necessary), K-K1 loses
 after 31. Q-Kt7, R-B1; 32. R-R1
 (threatening 33. P-B6 and 34. Qx
 Rch), Q-Q1; 33. B-R5 (threaten-
 ing 34. BxPch), Q-K2; 34. P-B6,
 Q-Q2; 35. B-K2 and there is no
 answer to the threat of 36. Qx
 Rch.

29. K-B1 P-B3
 30. R-Kt6 Q-KB2
 31. Q-R6ch K-K1
 32. B-R5 K-Q1
 33. R-Kt7 Q-B1

34. Q-Kt6 Resigns
 If 34... Kt-Kt4; 35. RxKt wins.

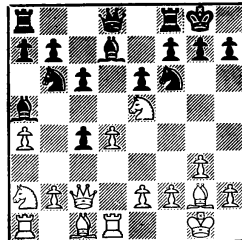
Game No. 230 - Q's Pawn

White R. Gross Black H. Borochow

- | | |
|-----------|--------|
| 1. P-Q4 | Kt-KB3 |
| 2. P-QB4 | P-K3 |
| 3. P-KKt3 | P-B3 |
| 4. B-Kt2 | P-Q4 |
| 5. Kt-QB3 | PxP |
| 6. Kt-B3 | PxP |
| 7. O-O | B-Kt5 |
| 8. P-QR4 | O-O |
| 9. Kt-R2! | B-R4 |
| 10. Q-B2 | Kt-Kt3 |
| 11. R-Q1 | B-Q2 |

11... Q-K2; 12. Kt-K5, R-Q1 (plan-
 ning, after 13. KtxP, KtxKt; and
 14...P-K4) fails on 13. BxP! PxB;
 14. KtxBP, Q-B2; 15. KtxB (if 15...
 B-R3; 16. P-QKt4; if 15... B-Q2;
 16. P-QKt3).

12. Kt-K5



12. ... Kkt-Q4
 Black's position is difficult. 12.
 ...Q-K2; 13. KtxP(B4), KtxKt; 14.
 QxKt, P-K4; 15. PxP, QxP; 16. B-B4,
 Q-K3 seems preferable, though it is
 touch and go after 17. QxQ, BxQ;

18. P-Qk4, B-Ql1 (not 18... B-Kt3?; 19. P-R51, B-Q1; 20. B-Q6, R-K1; 21. P-R61 winning). 19. P-Kt5, B-Q4; 20. PxP, BxP; 21. BxB, PxB; 22. P-K3, Kt-K5; 23. B-R3 (not 23. B-B4, P-KKt4), P-B4 etc.

- | | | |
|-----|-------|--------|
| 13. | P-K4 | Kt-Kt5 |
| 14. | KtxKt | BxKt |
| 15. | P-R5 | Kt-B1 |
| 16. | QxP | B-K2 |
| 17. | KtxB | |

It is curious White relieves the pressure. Either 17. P-Qk4, or 17. P-Q5, or 17. P-R6 seems stronger.

- | | | |
|-----|-------|--------|
| 17. | ... | Kt-Q3 |
| 18. | Q-B2 | QxKt |
| 19. | P-R61 | Kt-Kt4 |
| 20. | P-K5 | QR-B1 |

Not 20... KtxP, 21. PxP, QR-Kt1; 22. Q-R4.

- | | | |
|-----|-------|--------|
| 21. | B-K3 | KR-Q1 |
| 22. | QR-B1 | PxP |
| 23. | BxP | Q-B2 |
| 24. | Q-R4 | Q-Kt1 |
| 25. | QxRP | Kt-B2 |
| 26. | Q-Kt7 | Kt-Q4? |

Time pressure. But Black's game seems lost. e.g., 26... B-B1; 27. B-KKt51 wins. Or 26... B-Kt5; 27. B-Kt5, R-B1; 28. R-B4, P-QR4; 29. KR-QB1 and 30. B-Kt2 threatens. Black cannot prevent White's rooks from entering on the Q-side. 27 27. BxKt Resigns

This game, played in the fifth round between the two players with 4-0 scores, was on of the major upsets in a tournament notable for upsets.

Game No. 231 - Ruy Lopez

White	Black
<u>I. Rivise</u>	<u>B. Madrid</u>

(Notes by Irving Rivise)

- | | | |
|----|--------|--------|
| 1. | P-K4 | P-K4 |
| 2. | Kt-KB3 | Kt-QB3 |
| 3. | B-Kt5 | P-QR3 |
| 4. | B-R4 | Kt-B3 |
| 5. | O-O | B-K2 |
| 6. | Q-K2 | P-Qk4 |
| 7. | B-Kt3 | O-O |
| 8. | P-B3 | P-Q4 |
| 9. | P-Q3 | |

If 9. PxP, KtxKt; 11. QxKt, B-Kt2; 12. P-Q4, P-QR4; 13. B-K3, R-R3 gives Black excellent attacking chances.

- | | |
|-----------|---|
| 9. ... | B-Kt2 |
| 9... P-Q5 | is more usual. Black's B is misplaced on this diagonal. |
| 10. | B-KKt5 |

A premature sortie, as Black quickly demonstrates. Better is 10. R-Q1.

- | | | |
|---------|------|-------|
| 10. ... | PxP | |
| 11. | PxP | Kt-Q2 |
| 12. | B-B1 | |

12. BxB aids Black's development. If 12. B-K3, Kt-QR4 and 13... Kt-B5, embarrassing White.

- | | |
|---------|--------|
| 12. ... | Kt-Kt3 |
|---------|--------|

Much better is 12... Kt-R4 and 13... P-QB4 with a satisfactory game.

- | | | |
|-----|--------|-------|
| 13. | R-Q1 | B-Q3 |
| 14. | B-Kt5 | Q-B1 |
| 15. | QKt-Q2 | Kt-Q1 |

Very awkward. 15... Kt-QR4 was still correct.

- 16. Kt-B1 Kt-K3
- 17. Kt-Kt3 KtxB

MATCH, 1954

This only aids White's attack.
17... Kt-KB5 was to be considered.

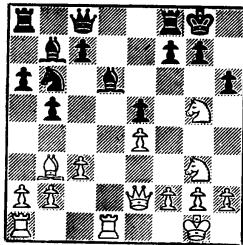
- 18. KtxKt P-R3

Game No. 232 - Two Knights'

White	Black
<u>S. Almgren</u>	<u>H. Borochow</u>
(2nd game of Match)	

(Ed.: 18... P-Kt3 is likewise insufficient, being answered by the same move. It is surprising how quickly Black's game now falls apart.)

- | | | |
|-----|---------|--------|
| 1. | P-K4 | P-K4 |
| 2. | Kt-KB3 | Kt-QB3 |
| 3. | B-B4 | Kt-B3 |
| 4. | Kt-Kt5 | P-Q4 |
| 5. | PxP | Kt-QR4 |
| 6. | B-Kt5ch | P-B3 |
| 7. | PxP | PxP |
| 8. | B-K2 | P-KR3 |
| 9. | Kt-KB3 | P-K5 |
| 10. | Kt-K5 | Q-Q5 |
| 11. | P-KB4 | B-QB4 |
| 12. | R-B1 | Q-Q1 |
| 13. | P-B3 | Kt-Q4 |
| 14. | Q-R4 | O-O |
| 15. | QxKP | P-KB3 |
| 16. | B-Q3 | P-B4 |
| 17. | Q-B3 | B-Q3 |



This wild and woolly line is - according to Rivise - all "book" (Euwe's Chess Archives).

- 19. Kt-B5!

A rude shock for Black. If now 19... PxKt; 20. RxB, Q moves; 21. R-KKt6 wins. (Ed.: Or 19... Kt-B5; 20. RxB, Q-K1; 21. BxKt, PxR; 22. Q-R5, PxB; 23. KtxRPch wins)

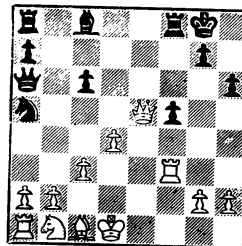
- | | | |
|-----|------|------|
| 18. | K-Q1 | KtxP |
| 19. | QxKt | BxKt |
| 20. | QxB | QxB |
| 21. | R-B3 | Q-R3 |
| 22. | P-Q4 | |

- 19. ... Q-K1
- 20. Q-R5 PxKt

(There is no other answer to the threat of 21. KtxRPch - Ed.)

- 21. Q-Kt6 Resigns

A cute final position.



22. ... P-B5†
 23. P-KR3
 Not 23. BxP, B-K5; nor 23. RxP, B-Kt5ch†; 24. RxB, Q-Q6ch; 25. Kt-Q2, R-B8ch (or 25. K-KL, QR-KL).
 23. ... B-Kt5†
 24. Q-K2
 24. PxB, QR-KL and White's Q is lost, as Q-K7 mate is threatened.
 24. ... BxR
 25. PxB QxQch
 26. KxQ QR-Klch

with a winning game.
 (Black subsequently made a blunder and lost).

Note: Borochoy won this match, 3-1 - Ed.

12. RxKt P-Q4
 Black makes the pawn position flexible in order to put her Bishop to full use.

13. PxP PxB
 14. Kt-K5 Kt-Q5
 15. B-B3 B-Kt2
 16. Kt-K2 KtxB
 17. RxKt P-B3
 18. Kt-Kt4 P-KR4
 19. Kt-B2 P-Q5
 20. R-Kt3 P-B4

Black has deprived the White Knights of immediate squares, the first success of the Bishop-pair.

21. P-B3 P-R5
 22. R-R3

After R-Kt6, K-B2! The Rook is singularly trapped.

22. ... Q-Q4
 23. R-B3 R-B3
 24. Kt-R3 R-Kt3
 25. K-R1

CALIFORNIA WOMEN'S CHAMPIONSHIP

Game No. 233 - Sicilian

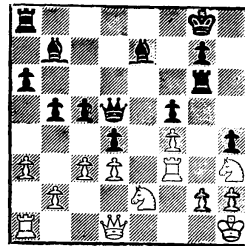
White Black
Mrs.O.Higgins Mrs.L.Grumette

1. P-K4 P-QB4
 2. P-KB4 P-Q3
 3. Kt-KB3 Kt-QB3
 4. Kt-QB3 P-QR3
 5. B-B4 P-K3

The best reaction to White's second move is P-K3, preparing for an eventual P-Q4.

P-QKt4 immediately was better, since White could now play P-QR4.

6. O-O? P-QKt4
 7. B-K2 Kt-KB3
 8. P-Q3 B-K2
 9. P-QR3 O-O
 10. B-K3 Kt-KKt5
 11. B-B2 KtxB



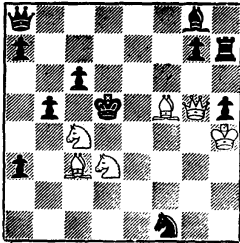
25. ... QxR†
 Resigns

A consistent and forceful game.

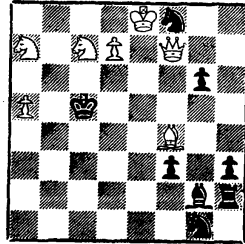
REPORTER TASKS We continue our seventh problem-solving contest with two three-movers by the late, great problemist, Godfrey Heathcote.

Due to the fact that this issue of the REPORTER is coming out so soon after the previous issue, we shall defer giving the solutions to TASKS Nos. 49 and 50 until next month.

TASK No. 51
White Mates in Three



TASK No. 52
White Mates in Three



Answers to TASKS should be sent to: Dr. H. J. Ralston
184 Edgewood Avenue
San Francisco 17, Calif.