

# THE CALIFORNIA CHESS REPORTER

Vol. VIII, No. 4                      \$2.00 per year                      December, 1958

THE CALIFORNIA CHESS REPORTER — Ten numbers per year  
Official Organ of the California State Chess Federation  
Editor: Guthrie McClain, 244 Kearny Street, San Francisco 8  
Associate Editors: Robert E. Burger, Lafayette; Dr. Mark W. Eudey,  
Berkeley; Neil T. Austin, Sacramento; Irving Rivise, Los Angeles  
Task Editor:                      Dr. H. J. Ralston  
Games Editor:                      N. E. Falconer, Lafayette  
Guest Annotator:                      Imre König, San Francisco

## CONTENTS

Bagby Wins State Title... 61-64	Postal Championship..... 73
Northern Calif. Chp. 1958 64-68	Game of the Month..... 74-75
Southern Calif. Chp. 1958... 69	Inland Chess League..... 75
Santa Monica Open 1958..... 70	Games..... 76-79
Sacramento Chess League.. 71-73	Precita Vly. Club Election... 79
Central Calif. League..... 73	Reporter Tasks..... 80

## CHARLES BAGBY STATE CHAMPION

Charles Bagby of San Francisco won the Thanksgiving week tournament for the California State Championship by the fine score of  $3\frac{1}{2}-\frac{1}{2}$ , over Bill Addison 5-2, and Irving Rivise 4-3. Bagby was the only player in the finals to go undefeated. It was a triumph for the veteran who has been close many times but never champion in over 30 years of trying.

The finals were the culmination of qualifying tournaments in which some 70 players competed (not to mention the large California Open which qualified one of the finalists). In southern California, Irving Rivise, already qualified as Open Champion, tied with ex-U.S. Junior Champion Saul Yarmak and won first place on tie-breaking points. In northern California, 1957's Open Champion Jim Schmitt scored a fine victory (but was ill during the finals and withdrew). In central California, P. D. Smith, perennial Fresno titleholder, qualified.

The finals were held at San Francisco's 100-year-old Mechanics' Institute and were directed by Arthur B. Stamer.

BAGBY WINS STATE TITLE

Mechanics' Institute Chess Club has been the scene of many triumphs by Charles Bagby, but this last one was the sweetest. Scoring a solid  $5\frac{1}{2}$ - $1\frac{1}{2}$  over the Thanksgiving holidays - against California's finest players - he became State Champion for the first time in an otherwise highly successful career.

The victory was hard won. First of all, Bagby had to outstrip Addison, whose impressive score of 5-2 was marred by the loss of a full point and a half to the last two finishers. There were also some uncertain moments when Wang, for example, held a win over Bagby in his hand, only to let it slip. Incidentally, Wang seemed to play hardest against the top players, as if this were something that "really mattered."

Rivise was understandably disappointed in his play - which was competent enough but lacking in his usual imagination. The rest of the field was never in contention, but contributed many interesting games. The final standings were as follows:

CALIFORNIA STATE CHAMPIONSHIP	1	2	3	4	5	6	7	8	Score
1. Charles Bagby, San Francisco	X	$\frac{1}{2}$	$\frac{1}{2}$	1	$\frac{1}{2}$	1	1	1	$5\frac{1}{2}$ - $1\frac{1}{2}$
2. William Addison, San Francisco	$\frac{1}{2}$	X	1	1	1	1	$\frac{1}{2}$	0	5-2
3. Irving Rivise, Los Angeles	$\frac{1}{2}$	0	X	0	1	1	1	$\frac{1}{2}$	4-3
4) Joe Mego, Los Angeles	0	0	1	X	$\frac{1}{2}$	0	1	1	$3\frac{1}{2}$ - $3\frac{1}{2}$
5) Phil D. Smith, Fresno	$\frac{1}{2}$	0	0	$\frac{1}{2}$	X	$\frac{1}{2}$	1	1	$3\frac{1}{2}$ - $3\frac{1}{2}$
6) Saul Yarmak, Los Angeles	0	0	0	1	$\frac{1}{2}$	X	1	1	$3\frac{1}{2}$ - $3\frac{1}{2}$
7) Gordon Palmer, Venice	0	$\frac{1}{2}$	0	0	0	0	X	1	$1\frac{1}{2}$ - $5\frac{1}{2}$
8) Arthur Wang, Berkeley	0	1	$\frac{1}{2}$	0	0	0	0	X	$1\frac{1}{2}$ - $5\frac{1}{2}$

The first surprise of the tournament came when Wang got the better of Addison in a middle game combination. Here's how it happened:

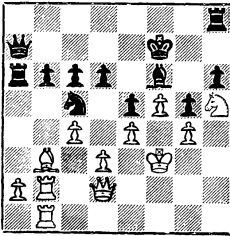
Game No. 458 - QP, Tarrasch Defense	9.	0-0	0-0
White	10.	B-Kt5	P-Q5
A. Wang	11.	Kt-K4	B-K2
Black	12.	KtxKt	BxKt
W. Addison	13.	BxB	QxB
(Notes by Bob Burger)	14.	Kt-K1	R-K1
1. P-QB4	15.	Kt-Q3	B-Kt5
2. P-KKt3	16.	R-K1	QR-Q1
3. B-Kt2	17.	R-QB1	Kt-K4
4. P-Q4	18.	BxP	Q-QKt3
5. Kt-KB3	19.	Q-Kt3!	QxQ
6. BPxP	20.	PxQ	BxP?
7. Kt-B3	21.	KtxKt	RxKt
8. PxP			

22. B-R6 BxB

Forced, as the back rank is un-  
guarded after QR-K1.

23. RxR and won.

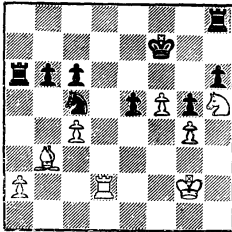
There was more than one surprise  
in the game Bagby-Wang, where  
Bagby built up a commanding posi-  
tion, carefully prepared for the  
break-through, then overlooked a  
little combination. Not to be out-  
done in generosity, Wang almost  
immediately gave the game back:



45. P-Q4 PxB  
46. KtxB Q-K2!  
47. Kt-R5 QxPch  
48. K-Kt3 QxR!

This was the move that White had  
overlooked in preparing P-Q4.  
The Black Queen had no other good  
squares - except the one occupied  
by the Rook.

49. QxQP Q-K8ch  
50. K-Kt2 Q-K4  
51. QxQ PxB  
52. R-Q2



52. ... KtxB?

There was no hurry for this.  
Simple enough was QR-RL; for ex-  
ample: 53. R-Q6, QR-Q1; 54. RxBP,  
R-Q7ch; 55. K-B1, R-RL, threaten-  
ing KtXB, winning.

53. R-Q7ch K-K1  
54. Kt-B6ch K-B1  
55. PxBt R-R6

Still mesmerized by his move 52.

56. K-B3! RxPch  
57. K-K4 R-Kt8  
58. R-Q8ch K-Kt2  
59. Kt-R5ch K-R2  
60. R-Q7ch K-Kt1

White's little maneuver with the  
Rook and Knight tie up Black even  
further.

61. KxP R-K8ch  
62. K-B6 R-K1  
63. R-Kt7ch K-B1  
64. R-B7ch K-Kt1  
65. K-Kt6 Resigns.

Addison's trenchant style  
produced some fine wins, the most  
abrupt of which was the following:

QP Opening

White Black  
W. Addison S. Yarmak

1. P-Q4 P-Q4  
2. P-QB4 Kt-QB3

Irregular openings are sometimes  
tried against Addison - with the  
opposite effect! He usually  
knows them better than the one  
who has "prepared" it.

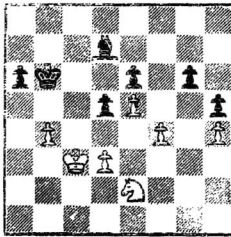
3. Kt-KB3 B-Kt5  
4. Q-R4 BxKt  
5. KPxB PxP  
6. Kt-B3! QxP

This is madness.

7. B-K3 Q-Q3  
8. Kt-Kt5 Q-K4  
9. O-O-O P-KKt4  
10. R-Q5 and the Queen

is lost, or worse. White mated on  
the 20th move.

Here Rivise shows how to win a won ending of Knight versus "bad" Bishop:



45. P-B5! KtPxP

Either way, the Black Kingside Pawns are defenseless.

46. Kt-B4 K-B2  
 47. KtxRP K-Q1  
 48. K-Q4 B-Kt4  
 49. Kt-B4 K-K2  
 50. K-B5 B-K1  
 51. P-R5 B-Kt4  
 52. P-R6 K-B2  
 53. K-Q6 P-Q5  
 54. P-R7 K-Kt7  
 55. KxP KxP  
 56. KxP K-Kt2  
 57. P-K6 K-B1  
 58. K-K5 K-K2  
 59. Kt-Q5ch K-K1  
 60. KxP Resigns.

For more games from this tournament, see Games Section.

#### NORTHERN CALIFORNIA CHAMPIONSHIP, 1958

James Schmitt clearly dominated this annual event, allowing but two draws and no losses in nine games. Addison, Bagby, and Gross fought among themselves for the two other qualifying places for the State Championship. Two surprises were Arthur Wang, who challenged the leaders with a consistent score, and Walter Pafnutieff, who was unfortunately not "up" for this tourney. It was also unfortunate for the State Tourney that Schmitt was unable to participate, and his place had to be filled from below. Henry Gross deferred, so the qualifiers became Addison, Bagby, and Wang.

	1	2	3	4	5	6	7	8	9	10	11	12	13	14	Score
1 J Schmitt	X	$\frac{1}{2}$	$\frac{1}{2}$	1	1	1	1	1	1f				1		8-1
2 W Addison	$\frac{1}{2}$	X	$\frac{1}{2}$	0	$\frac{1}{2}$	1	1	1	1	1					6 $\frac{1}{2}$ -2 $\frac{1}{2}$
3 C Bagby	$\frac{1}{2}$	$\frac{1}{2}$	X	1	$\frac{1}{2}$	$\frac{1}{2}$	$\frac{1}{2}$	1	1f			1			6 $\frac{1}{2}$ -2 $\frac{1}{2}$
4 H Gross	0	1	0	X	0	1	1			1	1	1			6-3
5 A Wang	0	$\frac{1}{2}$	$\frac{1}{2}$	1	X	0			$\frac{1}{2}$	1	1		1		5 $\frac{1}{2}$ -3 $\frac{1}{2}$
6 R Walker	0	0	$\frac{1}{2}$	0	1	X	0	1			1	1			4 $\frac{1}{2}$ -4 $\frac{1}{2}$
7 L Frankenstein	0	0	$\frac{1}{2}$	0			X	1	0	$\frac{1}{2}$	1		1		4-5
8 R Smith		0	0		1	0	X		1	1	1	0	0		4-5
9 R Plock	0	0	0f		$\frac{1}{2}$	0	1		X		1		0	1	3 $\frac{1}{2}$ -5 $\frac{1}{2}$
10 W Pafnutieff	0f	0		0		$\frac{1}{2}$	0		X	$\frac{1}{2}$	$\frac{1}{2}$	1	$\frac{1}{2}$		3-6
11 J Kalisch				0	0		0	0	0	$\frac{1}{2}$	X	$\frac{1}{2}$	1	1	3-6
12 S Van Gelder				0	0	0	0	0		$\frac{1}{2}$	$\frac{1}{2}$	X	1f	1	3-6
13 R Cuneo						0	0	1	1	0	0	0f	X	1	3-6
14 D Nieder	0				0			1	0	$\frac{1}{2}$	0	0	0	bye	2 $\frac{1}{2}$ -6 $\frac{1}{2}$

As to the play, the table is clear enough. Gross, true to his style, allowed no draws (but three losses!). His loss to Wang was the result of a gross oversight. (And having used that pun, let it be retired for another year.) On the other hand, the closest Schmitt came to losing was probably to Wang. In spite of Bagby's five draws, his games were exciting and full of combinational play. Addison's single loss was the result of his uncompromising, pressing style. He overstepped himself in a combination that seemed to justify his opening play (see below).

But one has only to play over a few of the games to see the real force of Schmitt's winning play. In very sharp company he consistently sacrificed pawns - and made them stick. For example:

Game No. 459 - Gruenfeld

White	Black
J. Schmitt	H. Gross

(Notes by Bob Burger)

1.	Kt-KB3	Kt-KB3
2.	P-Q4	P-KKt3
3.	P-B4	B-Kt2
4.	P-KKt3	P-Q4
5.	B-Kt2	O-O
6.	PxP	KtxP
7.	O-O	Kt-Kt3
8.	Kt-B3	Kt-B3
9.	P-Q5	Kt-Kt5
10.	P-K4	P-K3
11.	B-Kt5	Q-K1
12.	R-K1	B-Q2
13.	P-Q6!	PxP
14.	P-QR3	Kt-R3
15.	B-KB1	P-R3
16.	B-KB4	P-K4
17.	B-K3	B-Kt5
18.	P-R3	BxKt
19.	QxB	Kt-B2
20.	Q-Q1	

20.	...	Q-K3
21.	R-B1	QR-B1
22.	P-QR4!	KR-Q1
23.	P-R5	Kt-Q2
24.	BxQRP	Kt-K1
25.	Q-Q5	QxQ
26.	KtxQ	B-B1
27.	B-Kt5	RxR
28.	RxR	P-B4
29.	P-B3	K-B2
30.	P-QKt4	B-K2
31.	K-Kt2	Kt2-B3
32.	B-B4	K-B1
33.	B-K3	Kt-Kt1

Mistakes like this are easy in positions like this!

34.	KtxB	KxKt
35.	BxKt	Resigns.

Again, in the following game, Schmitt makes a purely positional pawn sacrifice. Only this time we are deprived of a full game by an agreement to draw - at a critical moment.

A pawn down for seven moves, White calmly betters his position. And it turns out that he doesn't even need to regain the Queen pawn. Backward, it gives Black a difficult game.

Game No. 460 - English

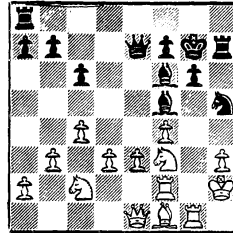
White	Black
C. Bagby	J. Schmitt

1.	P-QB4	Kt-KB3
----	-------	--------

- 2. P-KKt3 P-KKt3
- 3. P-QKt3 B-Kt2
- 4. B-QKt2 C-C
- 5. B-Kt2 P-B3
- 6. Kt-KB3 P-Q4
- 7. C-C QKt-Q2
- 8. Kt-R3 Q-R4
- 9. P-Q3 P-K4
- 10. Q-B1 R-K1
- 11. B-B3 Q-Q1
- 12. Q-Kt2 Q-K2
- 13. QR-Q1

- 27. Q-K1 B-B4
- 28. B-B1 R-R2

Final position:



If Nimzowitsch can be credited with the maneuver B-Kt2, R-R2, and Q-R1, can White's last three moves be called Bagbian? White is true to the English motif of inviting Black to advance in the center, and he does, too - with gusto.

- 13. ... P-Q5
- 14. B-K1 P-K5!
- 15. KtxP P-K6!
- 16. P-B4

If PxP, then Kt-Kt5, threaten- ing both KtxKP and P-QB4.

- 16. ... P-KR4!

Black uses the time he has gained to break up the King- side to his advantage.

- 17. Kt/3-B2 Kt-Kt5
- 18. Q-B1 P-R5
- 19. Kt-B3 Pxp
- 20. Bxp Kt2-B3
- 21. P-KR3 Kt-B7

A second Pawn goes, as Black must have foreseen at the start of his combination.

- 22. BxKt PxBch
- 23. Rxp Kt-R4
- 24. K-R2 B-B3
- 25. P-K3 K-Kt2
- 26. R-Kt1 R-R1

Here a draw was agreed upon. (Draws are agreed upon when the position is either too certain or too uncertain.) White cannot play 29. P-K4 because of BxRP followed by KtxP, etc. But he can try QKt-Q4, B-Q2; Q-Q2, with the threat of P-K4. In any case, a very uncertain position, the result of Black's energetic play.

Game No. 461 - Caro-Cann

White Black  
H. Gross W. Addison

- 1. P-K4 P-QB3
- 2. Kt-K2

The idea of this unusual move is to play P-K5 and be better prepared to chase Black's Queen Bishop than after Kt-B3.

- 2. ... P-Q4
- 3. P-K5 B-Kt5

A refinement on B-B4, but the position soon comes to the same thing.

- 4. P-Q4 P-K3
- 5. P-KB3 B-KB4
- 6. Kt-Kt3 B-Kt3
- 7. B-Q3 Q-Kt3

Black takes advantage of the fact that White's Q4 is not protected by a Kt at B3, as it usually is in this variation, and it soon becomes apparent that the Kt at Kt3 must return.

- 8. P-B3 P-QB4
- 9. P-KB4 BxB

Avoiding the complications of allowing P-B5.

- 10. QxB PxB
- 11. PxB Kt-QB3
- 12. Kt-K2 Kt-R3

And Black gets a good Caro-Cann position, with the gain of a move. If the White Knight could have remained at Kt3, his first move might have been justified.

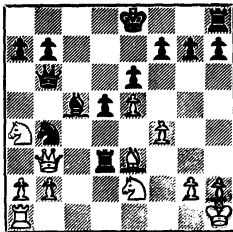
- 13. O-O-O Kt-B4
- 14. R-Q1 Kt-Kt5
- 15. Q-QKt3 R-B1
- 16. QKt-B3 R-B5
- 17. K-R1 KtxQP

The beginning of a complicated combination which Black has seen further into.

- 18. RxKt! RxR
- 19. B-K3 B-B4
- 20. Kt-R4

BxB first seems just as strong, and simpler.

- 20. ... R-Q6



- 21. BxB! RxQ
- 22. BxQ KtxP
- 23. B-Q4

The point. Black cannot save the Knight (Kt-Kt5; Kt-B5, etc.).

- 23. ... R-Q6
- 24. RxKt R-Q7
- 25. QKt-B3

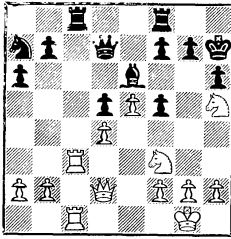
Now the Rook is ensnared.

The remainder of the game is interesting from the point of view of the care necessary, even with such a material superiority. The final plight of the Black King is pathetic.

- 25. ... P-QR3
- 26. K-Kt1 O-O
- 27. B-K3 R-Q6
- 28. K-B2 R-B1
- 29. Kt-B1 R6xKt
- 30. PxB RxP
- 31. K-K2 P-KR4
- 32. K-Q2 R-B5
- 33. R-B2 K-R2
- 34. RxR PxB
- 35. B-Kt6 K-Kt3
- 36. K-B3 K-B4
- 37. Kt-K2 P-Kt3
- 38. KxB K-K5
- 39. K-B3 P-R4
- 40. BxB K-K6
- 41. Kt-Kt1 K-B7
- 42. B-Kt6ch KxB
- 43. P-R3 K-Kt6
- 44. B-K3 K-Kt7
- 45. K-Kt4 K-B8
- 46. K-B5 K-K8
- 47. K-Kt6 Resigns.

The following four positions give some idea of the combinational fireworks exhibited by the top five players:

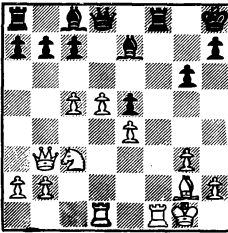
H. Gross - W. Pafnutieff



19. Kt-Kt5ch! K-R1  
 If PxKt, then QxP.  
 20. Kt-B6! Q-K2  
 If PxKt/6, then Kt-K4!, with  
 innumerable threats.  
 21. R-R3 RxRch  
 22. QxR P-B5 and  
 Resigns,  
 for he sees that Q-B2 is murder.

W. Addison - R. Plock

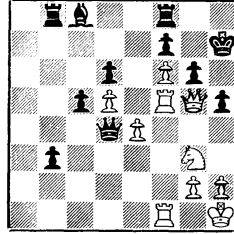
Having won a pawn earlier, Addison finishes off the game in typical style, returning the pawn for a killing combination...



21. P-Q6! PxP  
 22. PxP BxP  
 23. Q-Q5 Q-Kt3ch  
 24. K-R1 RxRch  
 25. BxR! B-B2  
 26. Q-B7 B-K3  
 27. Q-B6ch K-Kt1  
 28. R-Q7!! Resigns.

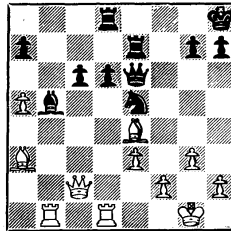
A. Wang - J. Schmitt

Position after 29... P-Kt6:



30. KtxP  
 P-KR4 threatens a draw, starting  
 QxRPch, but the move played looks  
 strong.  
 30. ... P-Kt7  
 31. Kt-Kt3  
 And not Kt-B4; BxR, PxB; P-Kt8/Q,  
 etc. Also, Q-R4 is answered by R-R1.  
 31. ... R-KR1  
 32. R/5-B4 K-Kt1  
 33. Kt-B5 BxKt  
 34. RxB Q-Q6  
 35. R-R4? QxR mate.

C. Bagby - H. Gross



25. BxQP! RxB  
 26. RxR QxR  
 27. RxB P-KR3  
 28. Q-B5 Resigns.

A neat combination based on the vulnerable back rank.



SOUTHERN CALIFORNIA CHAMPIONSHIP, 1958

This annual event saw Irving Rivise, fresh from his victory in the Open at Santa Barbara, tie for first place with Saul Yarmak and win the title on tie-breaking points. Both players scored 7-1; Rivise allowed draws to Leslie Simon and Jim Barry, while Yarmak won seven games and lost to the winner. Leslie Simon and Joe Mego tied for third and fourth,  $5\frac{1}{2}$ - $2\frac{1}{2}$ , while Gordon Palmer and Ray Martin tied for fifth. As Rivise had already qualified for the State Championship finals as Open Champion, the next four players were invited to San Francisco. Simon and Martin were unable to make the trip, so Yarmak, Mego and Palmer went on to the finals.

The tournament was held from September 21 to November 15. It was open to any player with a USCF rating of 2,100 or better, plus the winners of four regional qualifying tournaments. In spite of the qualifying procedure having been adopted at the last minute, about 50 players participated. The tournament director was Ralph Hagedorn. The scores:

	1	2	3	4	5	6	7	8	Score	Median
1) I Rivise	W17	D7	W14	W5	W2	D3	W6	W11	7	$28\frac{1}{2}$
2) S Yarmak	W26	W27	W10	W18	L1	W4	W3	W5	7	$26\frac{1}{2}$
3) Leslie Simon	W24	L18	W19	W7	W8	D1	L2	W9	$5\frac{1}{2}$	$27\frac{1}{2}$
4) J Mego	L8	W13	W27	W23	W18	L2	D5	W10	$5\frac{1}{2}$	$23\frac{1}{2}$
5) G Palmer	D21	W12	W6	L1	W11	W10	D4	L2	5	$30\frac{1}{2}$
6) R J Martin	W25	D9	L5	D14	W7	W8	L1	W13	5	$26\frac{1}{2}$
7) J E Barry	W13	D1	D9	L3	L6	W17	D8	W19	$4\frac{1}{2}$	$27\frac{1}{2}$
8) G Soules	W4	W19	L18	W9	L3	L6	D7	W14	$4\frac{1}{2}$	26
9) H Gordon	W15	D6	D7	L8	W27	D18	W19	L3	$4\frac{1}{2}$	$25\frac{1}{2}$
10) S Almgren	W28	W23	L2	D11	W12	L5	W15	L4	$4\frac{1}{2}$	$25\frac{1}{2}$
11) M Gordon	L23	W22	W16	D10	L5	W12	W18	L1	$4\frac{1}{2}$	24
12) R Syvertsen	D14	L5	W20	W21	L10	L11	W23	W18	$4\frac{1}{2}$	$23\frac{1}{2}$
13) H Milner	L7	L4	W15	W25	W14	D19	D16	L6	4	25
14) T M Fries	D12	W21	L1	D6	L13	W27	W20	L8	4	$24\frac{1}{2}$
15) E Bean	L9	D17	L13	W28	W26	W20	L10	D16	4	$22\frac{1}{2}$
16) R Villanueva	L18	W28	L11	D20	D17	W24	D13	D15	4	22
17) L Standers	L1	D22	L1	W22	D16	L7	W24	W25	4	$21\frac{1}{2}$
18) R Hamman	W16	W3	W8	L2	L4	D9	L11	L12	$3\frac{1}{2}$	$28\frac{1}{2}$
19) N Robinson	W22	L8	L3	W24	W21	D13	L9	L7	$3\frac{1}{2}$	24
20) Leroy Johnson	L27	W24	L12	D16	W23	L15	L14	W26	$3\frac{1}{2}$	$19\frac{1}{2}$
21) R Seltzer	D5	L14	W17	L12	L19	bye1	W27	-	$3\frac{1}{2}$	18
22) E Milcas	L19	L11	L24	L17	bye1	W26	L25	W23	3	$17\frac{1}{2}$
23) W Cunningham	W11	L10	D26	L4	L20	bye1	L12	L22	$2\frac{1}{2}$	23
24) F Burke	L3	L20	W22	L19	D25	L16	L17	W27	$2\frac{1}{2}$	$20\frac{1}{2}$
25) L G Thompson	L6	L26	W28	L13	D24	-	W22	L17	$2\frac{1}{2}$	19
26) F Hufnagel	L2	W25	D23	L27	L15	L22	bye1	L20	$2\frac{1}{2}$	$17\frac{1}{2}$
27) C J Gibbs	W20	L2	L4	W26	L9	L14	L21	L24	2	$23\frac{1}{2}$
28) J W Blaney	L10	L16	L25	L15	L22	-	-	-	0	

SANTA MONICA OPEN, 1958

Fritz Leiber took first prize with an impressive score of  $7\frac{1}{2}-\frac{1}{2}$ , allowing a draw with Paul Wrangell. Mr. Leiber, who came from Chicago last summer, is a well-known writer of science-fiction and fantasy. The strong field included Gordon Palmer, a clear second, who later qualified for the State Finals. The tournament was ably directed over a period of a month and a half by Herbert T. Abel, President of the Santa Monica Bay Club. A USCF-rated event.

## SANTA MONICA OPEN, 1958

	1	2	3	4	5	6	7	8	Score
1. Fritz Leiber	W5	W15	W22	W16	D4	W2	W9	W6	$7\frac{1}{2}-\frac{1}{2}$
2. Gordon Palmer	W24	W18	W9	L4	W6	L1	W8	W10	6-2
3) Robert Sale	L7	D23	W21	W22	W18	W14	L4	W9	$5\frac{1}{2}-2\frac{1}{2}$
4) Paul Wrangell	W10	W19	W16	W2	D1	L9	W3	L8	$5\frac{1}{2}-2\frac{1}{2}$
5) Donald Benge	L1	W17	W26	L6	W13	L15	W14	W16	5-3
6) Emil Bersbach	W21	L9	W8	W5	L2	W10	W15	L1	5-3
7) Jack Kliger	W3	L16	L10	W11	W24	L8	W19	W15	5-3
8) Sidney Weinbaum	L9	W14	L6	W12	W22	W7	L2	W4	5-3
9) Andy Kempner	W8	W6	L2	W18	D15	W4	L1	L3	$4\frac{1}{2}-3\frac{1}{2}$
10) Marcos Kerilenevich	L4	D25	W7	W26*W19	L6	W18	L2		$4\frac{1}{2}-3\frac{1}{2}$
11) Tony Loera	L16	L13	W20	L7	W12	D12	W24	W21	$4\frac{1}{2}-3\frac{1}{2}$
12) R. D. Carter	L26	D21	D23	L8	L1	W23	W20	W17	4-4
13) Aurei Cherestes	L14	W11	L18	W25	L5	W24	L16	W22*	4-4
14) Kyle Forrest	W13	L8	L19	W17	W16	L3	L5	W18	4-4
15) Al Michaelson	W25	L1	W13	D19	D9	W5	L6	L7	4-4
16) Gene Olson	W11	W7	L4	L1	L14	W19	W13	L5	4-4
17. Berle Mintz	L18	L5	W23	L14	W25	D11	W22	L12	$3\frac{1}{2}-4\frac{1}{2}$
18) Bruce Collins	W17	L2	W24	L9	L3	W20	L10	L14	3-5
19) Marshall Neuss	W23	L4	W14	D15	L10	L16	L7	D24	3-5
20) Arkady Savvon	L22	L24	L11	W23	W21	L18	L12	Wbye	3-5
21) Austin Gates	L6	D12	L3	L24	L20	Wbye	W23	L11	$2\frac{1}{2}-5\frac{1}{2}$
22) S. H. Lewis	W20	D26	L1	L3	L8	W25	L17	L13*	$2\frac{1}{2}-5\frac{1}{2}$
23) George Sturges	L19	D3	L17	L20	Wbye	L12	L21	W25	$2\frac{1}{2}-5\frac{1}{2}$
24) Selma Sturges	L2	W20	L18	W21	L7	L13	L11	D19	$2\frac{1}{2}-5\frac{1}{2}$
25. Charles Lowery	L15	D10	D12	L13	L17	L22	Wbye	L23	2-6
26. Ralph Clark	W12	D22	L5	L10*-	-	-	-	-	$1\frac{1}{2}-6\frac{1}{2}$

\* Forfeit.

THE CALIFORNIA CHESS REPORTER

71

SACRAMENTO CHESS LEAGUE - by William A. Chesney, League Director

ROUND 1 - Oct. 1, 1958

<u>Air Force 4, Students 3</u>				4 D Cotton	1	J Morton	0
1 E Edmondson	0	W Rogers	1	5 E Waddell	1	Forfeit	0
2 W Rebold	0	W Haines	1	6 P Farrell	0	B James	1
3 D Gold	1	H Yee	0	7 H Kooi	1	F Altweis	0

<u>Bridge Dept. 9½, U.S. Corps of Engrs. ½</u>				6 W Egloff	1	C Knowlton	0
1 O Bender	1	A Survila	0	7 A Hoerchner	1	R Silva	0
2 W Kiedaisch	1	H Keith	0	8 A Banke	1	W Goecker	0
3 L Lovelace	1	H Justiniano	0	9 J Canfield	½	P Leatham	½
4 W Chesney	1	N Kerimly	0	10 R Shields	1	E Johnson	0
5 L Hollister	1	E Rock	0				

<u>Div. of Hwys. 4, Div. of Arch. 3</u>				4 F Volkert	1	J Pulsha	0
1 L Wolfson	0	M Mattingly	1	5 T Santos	0	K Musial	1
2 N Austin	1	J Andrewson	0	6 G Ebenhack	1	L Jamieson	0
3 D Nance	1	W Klose	0	7 O Arnold	0	L Fankhauser	1

<u>Cap. City CC 6½, Independents 2½</u>				5 E Horton	1	L Johnson	0
1 W Sprague	1	A Toth	0	6 M Tamres	0	N Talcot	1
2 J Morton	1	K Kline	0	7 R Greiner	1	H Yee	0
3 J Hunting	0	G Flynn	1	8 L Wilcox	1	H Burns	0
4 V Belmont	1	C Nerson	0	9 W Curdy	½	Gerharder	½

<u>Davis 6, Healing Arts 0</u>				4 J Brown	1	W Garrett	0
1 M Sata	1	Forfeit	0	5 J Votn	1	F Duyanovich	0
2 L. L. Osterwald	1	A Trent	0	6 C Brown	1	Forfeit	0
3 E G. Gillette	1	W Wilson	0				

ROUND 2 - Oct. 22, 1958

<u>Students 5, Div. of Arch. 4</u>				5 E Treisman	1	W Klose	0
1 W Haines	1	M Mattingly	0	6 B James	0	L Fankhauser	1
2 R Yee	1	D Alioshin	0	7 F Altweis	0	P McKoy	1
3 B Walson	1	C Roberts	0	8 L Kertesz	0	W Jensen	1
4 J Morton	1	K Musial	0	9 R Combs	0	L Jamieson	1

<u>U.S. Corps Engrs. 4, Cap. City CC 5</u>				5 C Knowlton	0	J Celle	1
1 A Survila	1	W Sprague	0	6 R Silva	0	L Wilcox	1
2 H Keith	1	J Morton	0	7 W Goecker	1	W Curdy	0
3 N Kerimly	1	E Horton	0	8 R Jamieson	0	M Tamres	1
4 H Justiniano	0	S Johnson	1	9 C Matlock	0	R Greiner	1

<u>Air Force 7, Bridge Dept. 3</u>				6 N Graham	1	A Hoerchner	0
1 E Edmondson	0	O Bender	0	7 G Sartwell	1	W Egloff	0
2 W Rebold	1	W Kiedaisch	0	8 P Farrell	0	A Banke	1
3 D Gold	1	J Mitchell	0	9 L Woods	0	J Canfield	1
4 D Cotton	1	L Lovelace	0	10 S Travis	1	R Shields	0
5 E Waddell	1	L Hollister	0				

Healing Arts 2, Div. of Hwys. 4

1 A Janushkowsky	1	L Wolfson	0	4 W Garrett	0	F Volkert	1
2 A Trent	0	N Austin	1	5 Forfeit	0	G Ebenhack	1
3 W Wilson	1	D Nance	0	6 Forfeit	0	T Santos	1

Independents 1½, Davis 6½

1 G Flynn	0	M Saca	1	5 C Iverson	0	D Olmsted	1
2 F Brandeis	0	I Lichtensten	1	6 J Fidelli	0	D Gillette	1
3 E Treisman	0	S Sosnik	1	7 N Talcot	½	J Voth	½
4 H Tejes	0	J Brown	1	8 L Johnson	1	C Brown	0

ROUND 3 - Nov. 5, 1958Bridge Dept. 3, Students 4

1 O Bender	½	W Haines	½	4 L Hollister	½	B Walson	½
2 W Chesney	0	W Rogers	1	5 A Banke	0	R Yee	1
3 W Kiedaisch	1	J Morton	0	6 W Egloff	0	E Treisman	1
				7 A Hoerchner	1	W James	0

Cap. City CC 6, Air Force 4

1 W Sprague	1	E Edmondson	0	6 L Wilcox	0	N Graham	1
2 J Morton	1	W Rebold	0	7 M Tamres	1	G Sartwell	0
3 J Celle	0	D Gold	1	8 J Hunting	1	F Roman	0
4 S Johnson	1	D Cotton	0	9 R Greiner	1	P Farrell	0
5 E Horton	0	E Waddell	1	10 W Curdy	0	I Primus	1

Div. of Architecture 3½, Healing Arts 2½

1 M Mattingly	0	A Janushkowsky	1	4 K Musial	1	W Garrett	0
2 J Andrewson	0	A Trent	1	5 L Jamieson	½	F Duyanovich	½
3 W Klose	1	W Wilson	0	6 L Fankhauser	1	W Bromberg	0

Div. of Highways ½, Independents 5½

1 N Austin	½	G Flynn	½	4 G Ebenhack	0	J Fidelli	1
2 D Nance	0	C Iverson	1	5 T Santos	0	H Yee	1
3 F Volkert	0	N Talcott	1	6 O Arnold	0	L Johnson	1

Davis 7, U.S. Corps Engrs. 1

1 M Saca	1	A Survila	0	5 D Gillette	0	C Knowlton	1
2 I Lichtenstein	1	H Keith	0	6 E Lemert	1	R Silva	0
3 S Sosnik	1	N Kerimly	0	7 J Voth	1	W Goecker	0
4 J Brown	1	P Leatham	0	8 C Brown	1	R Jamieson	0

ROUND 4 - Dec. 3, 1958Independents 9, Div. of Arch. 0

1 G Flynn	1	M Mattingly	0	5 J Fidelli	1	P McKoy	0
2 F Brandeis	1	J Andrewson	0	6 L Johnson	1	W Klose	0
3 C Iverson	1	D Alioshin	0	7 F Jackson	1	K Musial	0
4 N Talcott	1	C Roberts	0	8 H Tejes	1	L Jamieson	0
				9 O Turley	1	L Fankhauser	0

U.S. Corps Engrs. 4, Div. of Highways 4

1 A Survila	O	N Austin	1	5 R Silva	1	J Lacey	0
2 H Kieth	O	D Nance	1	6 W Goecker	1	T Santos	0
3 N Kerimly	1	F Volkert	0	7 R Jamieson	0	R Zook	1
4 E Rock	O	G Ebenhack	1	8 H Justiniano	1	O Arnold	0

Air Force 1½, Davis 5½

1 E Edmondson	O	M Saca	1	4 N Graham	0	J Brown	1
2 D Cotton	O	I Lichtenstein	1	5 E Waddell	0	D Gillette	1
3 W Rebold	½	S Sosnik	½	6 D Gold	0	D Olmsted	1
				7 G Sartwell	1	C Brown	0

Students 4, Healing Arts 2

1 W Haines	½	A Janushkowsky	½	4 B Walson	½	F Duyanovich	½
2 J Morton	1	A Trent	0	5 E Treisman	1	W Garrett	0
3 R Yee	0	W Wilson	1	6 F Altweis	1	W Bromberg	0

Bridge Dept. 4, Cap. City CC 2

1 W Kiedaisch	1	W Sprague	0	4 L Hollister	0	V Belmont	1
2 W Chesney	1	J Morton	0	5 A Banke	1	S Johnson	0
3 A Hoerchner	0	J Hunting	1	6 J Canfield	1	W Curdy	0

CENTRAL CALIFORNIA CHESS LEAGUEROUND 1Pittsburg 6½, Stockton ½

1 L Talcott	½	R Leigh	½	4 R Guzman	1	M Sanders	0
2 S Poulsen	1	H Minchaca	0	5 F Olvera	1	A Saxon	0
3 A Loera	1	W Jarvis	0	6 T Tracy	1	A Radinsky	0
				7 F Weinberg	1	H Keibler	0

Sacramento #1 6, Modesto 0

1 W Haines	1	L Davis	0	4 W Rebold	1	L Bennett	0
2 O Bender	1	M Morgan	0	5 J Morton Sr	1	E Jones	0
3 N Austin	1	R Ewing	0	6 E Edmondson	1	L Krogness	0

Sacramento #2 4, Oakdale 3

1 W Rogers	1	E Sai	0	4 J Celle	1	H Mortenson	0
2 M Mattingly	0	J Sutherland	1	5 J Hunting	1	V Smith	0
3 V Belmont	0	C Smith	1	6 J Morton Jr	1	W Smith	0
				7 W Wilson	0	J Christianson	1

POSTAL CHAMPIONSHIP TOURNAMENT - RESULTS RECEIVED THROUGH 12/21/58:

	Section 59-4:	Burrell	1	Winston	0
	Section 59-5:	Hultgren	1	Johnston	0
The tournament seems	Section 59-6:	Johnson	½	Gelbard	½
to be progressing well.	Section 59-8:	Gibbs	1	A Thompson	0
There have been a minimum	Section 59-9:	Betzer	withdrawn;	wins	
number of complaints and			accredited to	Ruys, White, Curdy,	
confusion.			Buchanan, Harris and	Rand.	
- J. A. Hamilton					

GAME OF THE MONTH

Henry Gross has been winning the Castle Chess Club Championship with regularity, but not with monotony. In individual games there are always "close calls," always weird complications. The following game from the 1958 tourney is perhaps the wildest of all. It grows out of that "tame" opening, the Four Knights.

Game No. 462 - Scotch Four Knights

White	Black
H. Gross	W. Hendricks

(Notes by Henry Gross)

- |           |        |
|-----------|--------|
| 1. P-K4   | P-K4   |
| 2. Kt-KB3 | Kt-QB3 |
| 3. Kt-B3  | Kt-B3  |
| 4. P-Q4   | B-Kt5  |

More usual is 4...PxP; 5. KtxP, B-Kt5. But that is not to say that 4...B-Kt5 is not equally strong.

5. P-Q5

"As is often the case in this kind of position, the closing up of the center is advantageous to Black rather than to White." So says Euwe in his Archives. But it is not White's intention to keep the center closed.

- |         |       |
|---------|-------|
| 5. ...  | Kt-K2 |
| 6. KtxP |       |

Here Euwe gives 6. B-Q2 as the main line...

- |            |      |
|------------|------|
| 6. ...     | P-Q3 |
| 7. B-Kt5ch | K-B1 |

...and suggests 7...P-B3; 8. PxP, O-O and concludes that "Black's start in development forms sufficient compensation for the sacrificed pawn." But Euwe's note was written before the game Persitz vs. Milner-Barry played at Paignton in 1955 where White now played 9. Kt-Q7 with an ex-

cellent game. So 7...K-B1 proves best after all.

- |          |       |
|----------|-------|
| 8. Kt-B3 | KtxKP |
| 9. Q-Q4  | KtxKt |
| 10. PxKt | B-QB4 |
| 11. Q-Q1 |       |

11. Q-QR4, B-Q2 and the question is: Is White's weak pawn position adequate compensation for Black's inability to Castle.

- |          |       |
|----------|-------|
| 11. ...  | P-QB3 |
| 12. PxP  | Kt-K3 |
| 13. Q-K2 | Kt-Q4 |

13...BxPch; 14. QxB, QxB would be bad for Black because it would leave an open file on which White could work up an attack against the Black King position.

14. B-Q2 PxP  
14. Q-K8ch, KxQ; 15. PxPch, QxB; 16. PxR/Q would win the exchange but lose the game because the Knight is indirectly defended.

- |             |        |
|-------------|--------|
| 15. B-QB4   | B-KKt5 |
| 16. O-O     | R-K1   |
| 17. Q-Q3    | Kt-B3  |
| 18. QR-Kt1? |        |

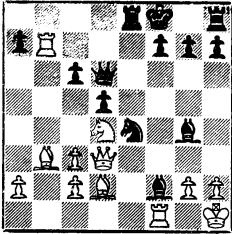
White's strategy is poor. He should challenge Black's only active Rook on the King's file.

- |           |       |
|-----------|-------|
| 18. ...   | BxPch |
| 19. K-R1  | Q-B4  |
| 20. Kt-Q4 |       |

20. RxB, QxR; 21. QxPch, K-Kt1; 22. Kt-Kt5 fails against B-R4 and what else is there?

20. ... Kt-K5

Threatening 21...Kt-Kt6ch; 22.  
PxBt, Q-R4 mate.  
21. R-Kt7  
If now Kt-Kt6ch, 22. QxKt, BxQ;  
23. QRxPch, K-Kt1; 24. R-B8 mate.  
21. ... P-Q4  
22. B-Kt3 Q-Q3



23. B-K3  
(An interesting try is 23. KtxP, with so many threats that, over-the-board, it would probably win. For example, 23...QxKt; 24. BxP with RxPch to come. Or 23...B-K7; 24. QxP! Or 23...B-K3; 24. Kt-Q4, Kt-B4; 25. KtxBch, QxKt; 26. BxP, KtxQ; 27. BxQ followed by PxBt. Or 23...Kt-B4; 24. BxP, KtxQ?; 25. RxPch, K-Kt1; 26. RxB dis. ch., R-K3; 27. PxBt, P-KR3; 28. P-B4 with five active pieces and the initiative vs. Black's Queen. Black's best appears to be 23...Kt-B4; 24. BxP, KtxR! and White has difficulty maintaining his advantage.)

23. ... Kt-Kt6ch

- 24. PxBt RxB
- 25. Kt-B5 BxKt
- 26. QxB Q-R3ch
- 27. Q-R3 BxP
- 28. R7xPch K-K1
- 29. RxBP B-Kt1
- 30. QxQ PxBt
- 31. R-QKt7 B-Q3
- 32. P-B4 R-B1
- 33. RxBch KxR
- 34. P-Kt4 PxBt
- 35. BxP R-R6ch
- 36. K-Kt2 R-R7ch
- 37. K-B3 RxBP

(These moves are being played under time pressure. White has perhaps not made the best moves; now Black goes wrong. There would be no winning chances for White if Black took the KtP.)

- 38. B-Kt3 R-B6ch
- 39. K-K4 R-Kt6
- 40. K-B5 R-K6?
- 41. RxB R-B6ch
- 42. K-Kt6 B-B5
- 43. R-B7ch K-K1
- 44. B-R4 R-B7
- 45. BxPch K-Q1
- 46. B-K4 K-K1
- 47. P-R4 P-R4
- 48. PxBt R-B8
- 49. B-B6ch K-Q1
- 50. K-R7 R-B7
- 51. P-R6 R-B8
- 52. P-R5 R-B8
- 53. RxB RxB
- 54. K-Kt7 R-B4
- 55. P-R7 Resigns.

INLAND CHESS LEAGUE

In October the former Tri-County team tournament expanded considerably. Teams from Anaheim, Lancaster, China Lake, and Victorville joined the Riverside, Pomona and San Bernardino clubs in a round-robin which covers a lot of country. The schedule runs until May, 1959.

CALIF. STATE CHAMPIONSHIP, 1958Game No. 463 - French Defense

White	Black
G. Palmer	A. Wang

(Notes by Gordon Palmer)

- |           |        |
|-----------|--------|
| 1. P-K4   | P-K3   |
| 2. P-Q4   | P-Q4   |
| 3. Kt-QB3 | Kt-KB3 |
| 4. P-K5   | KKt-Q2 |
| 5. Kt-B3? |        |

A mistake which should lead to White's downfall. Correct here is 5. P-B4, P-QB4; 6. Pxp, Kt-QB3; 7. P-QR3, Bxp; 8. Q-Kt4, O-O; 9. Kt-B3, P-B4; 10. Q-R3, Kt-Q5; 11. B-Q3, KtxKtch; 12. QxKt, B-Kt3 with equal chances.

- |          |        |
|----------|--------|
| 5. ...   | P-QB4  |
| 6. B-KB4 | QKt-B3 |

Better is 6...Q-Kt3 gaining the initiative taking advantage of White's inferior 5th move.

- |          |       |
|----------|-------|
| 7. Pxp   | P-QR3 |
| 8. B-Q3  | Bxp   |
| 9. O-O   | Q-B2  |
| 10. Q-K2 | Kt-Q5 |

This wins a pawn but 10... Kt-Kt5 may have been better - ridding himself of the menacing White KB and giving White no initiative.

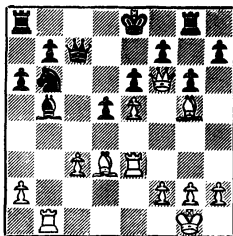
- |           |        |
|-----------|--------|
| 11. KtxKt | BxKt   |
| 12. QR-K1 | BxKt   |
| 13. PxB   | Qxp    |
| 14. Q-Kt4 | P-KKt3 |

14...K-B1 was also possible but after 15. R-K3, Q-B2; 16. R-Kt3, P-KKt3; Black's position is none too pleasant.

- |           |      |
|-----------|------|
| 15. R-K3  | Q-B2 |
| 16. P-QB3 |      |

This was done to retain the KB in case of 16...Kt-B4.

- |            |        |
|------------|--------|
| 16. ...    | Kt-Kt3 |
| 17. Q-R4   | B-Q2   |
| 18. Q-B6   | R-KKt1 |
| 19. B-KKt5 | B-Kt4  |
| 20. R-Kt1  |        |



- |         |      |
|---------|------|
| 20. ... | BxB? |
|---------|------|

Probably best is 20...Kt-B5; 21. R-R3, Kt-R6 (21...KtxP; 22. RxBch, PxB; 23. P-KB4 followed by 24. RxB with advantage); 22. BxBch, PxB (best); 23. R-Kt2 with about equal chances.

- |         |       |
|---------|-------|
| 21. RxB | P-KR3 |
|---------|-------|

There was still a chance to stave off destruction with 21...B-B4.

- |           |          |
|-----------|----------|
| 22. RxBch | PxB      |
| 23. QxBch | K-B1     |
| 24. BxBch | R-Kt2    |
| 25. RxB   | Resigns. |

Game No. 464 - French Defense

White	Black
P. Smith	G. Palmer

(Notes by Phil Smith)

- |          |       |
|----------|-------|
| 1. P-K4  | P-K3  |
| 2. P-Q4  | P-Q4  |
| 3. Kt-Q2 | P-QB4 |

Also played by Mego against me. I was hoping both would play 3...Kt-KB3; allowing 4. P-K5, Kt-Q2; 5. B-Q3, P-QB4; 6. P-B3,



Kt-QB3; 7. Kt-K2, Q-KL3; 8. Kt-B3, PxB; 9. PxB, P-B3; 10. PxB, KtXP; 11. O-O, B-Q3; 12. Kt-B3, O-O; 13. B-K3, Kt-KKt5; 14. P-KR3, KtXB; 15. PxB, O-O?; 16. BxPch, KxB; 17. Kt-KtSch, K-Kt5; 18. Kt-B7 with a winning attack.

4. KPxB KPxB

This is an easier way to equalize, despite the isolated pawn, than 4...QxP; 5. KKt-B3, PxB; 6. B-B4, etc.

5. B-Kt5ch Kt-B3

This is more enterprising than 5...B-Q2, but also more risky, because Black often gets a bad endgame, as Palmer does in this game. Smith-Mego went 5...B-Q2; 6. Q-K2ch, Q-K2; 7. BxBch, KtXB; 8. PxB, KtXP; 9. QKt-B3 (recommended by Keres and possibly better than 9. Kt-Kt3, played by Euwe against Botwinnik, Amsterdam, 1948); Kt-B3; 10. QxQch? (correct is 10. B-K3).

6. Q-K2ch B-K3

Safer and better are 6...B-K2 or Q-K2.

7. PxB

Better is 7. KKt-B3, B-Q3; and then 8. PxB, etc. But I was afraid of 7. KKt-B3, P-B5!? - probably without good reason. P-B5 in similar positions has been suggested by Barden, and it has been played by Gligoric.

7. ... BxB  
8. KKt-B3 KKt-K2  
9. Kt-Kt3 B-Q3

More usual is 9...B-Kt3.

10. Kt-Kt5

This probably starts a coffee-house attack and 10. B-Kt5 is probably sounder, but I was trying to weaken Black's Kingside pawns.

10. ... B-Q2  
11. Q-R5

Still coffeehousish, but consistent with the previous move.

11. ... P-KKt3  
12. Q-B3 O-O

There was a trap - if 12... Kt-K4?; 13. Q-B6 wins a piece. However, Kt-K4 was probably playable on the previous move, and perhaps it may have led to a good game for Black.

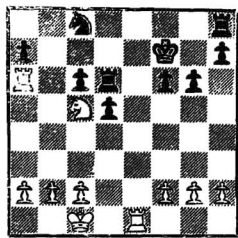
13. BxKt PxB  
14. B-B4 BxB

14...Q-B2 seems better.

15. QxB P-KB3  
16. Kt-B3 Q-Kt1  
17. QxQ QRxQ  
18. O-O-O B-Kt5  
19. R-Q3 QR-Q1

Maybe Black should get rid of his bad bishop at once, and perhaps White should have avoided the exchange on the next move, but White felt the endgame was just as strong for him with the "bad" bishop off the board!

20. Kt-B5 BxKt  
21. RxB K-B2  
22. R-KR3 R-KR1  
23. R-QR3 Kt-B1  
24. R-R6 R-Q3  
25. R-K1



25. ... R-K1

If Black does not play 25...R-K1; then White will play 26. R-K3 and get his other rook into active play as Barcza did against Szabo in a similar endgame that is now a classic in this opening. However, White has seen that if Black plays R-K1, the exchange will put the Black king in the way of the other Black rook - preventing him from going back to the first rank and K2 to oppose the White rook, when it gets to the 7th rank! Now not only does White get his rook on the 7th, but Black must lose a pawn.

26. RxR KxR  
 27. R-R3 K-B2  
 28. R-QKt3 R-Q1  
 29. R-Kt7ch K-Kt1  
 30. R-QB7 R-K1  
 31. RxBP Kt-Kt3  
 32. K-Q1 P-B4  
 33. R-B7 R-QB1  
 34. RxR KtxR  
 35. K-Q2 K-B1  
 36. K-Q3 K-K2  
 37. K-Q4 K-Q3  
 38. Kt-Kt7ch K-B2  
 39. Kt-R5 K-Q3  
 40. P-QB4 Kt-K2

If 40...PxP; 41. KtxPch and the White king will penetrate on either side, depending on Black's move.

41. P-B5ch K-K3  
 42. P-B4 P-Kt4  
 43. PxP P-B5  
 44. K-Q3 K-B4  
 45. P-QKt4 KxP  
 46. P-Kt5 Kt-B1  
 47. Kt-B6! K-Kt5  
 48. K-Q4 P-B6  
 49. Kt-K5ch Resigns.

SANTA MONICA INVITATIONAL - 1959

Game No. 465 - Sicilian  
 White Black  
 S. Almgren A. Michaelson

(Notes by R. E. Burger)

1. P-K4 P-QB4  
 2. Kt-KB3 Kt-QB3  
 3. P-Q4 PxP  
 4. KtxP Kt-B3  
 5. Kt-QB3 P-Q3  
 6. B-QB4 P-K3  
 7. O-O B-K2  
 8. B-K3 P-QR3  
 9. P-QR4 O-O  
 10. P-R3 Q-B2  
 11. B-Kt3 B-Q2  
 12. P-B4 KtxKt  
 13. QxKt B-B3  
 14. P-B5 P-K4  
 15. Q-Q3 K-R1  
 16. P-Kt4 Kt-Q2  
 17. Kt-Q5 BxKt  
 18. BxB QR-B1  
 19. R-B2 Kt-Kt3  
 20. P-Kt5 KtxB  
 21. PxKt P-KKt3  
 22. P-B6 B-Q1  
 23. QR-KB1 Q-B5  
 24. QxQ RxQ

White stakes his advantage on the confined position of the Black King. Black should free his King before any other plans.

25. P-Kt3 R-K5  
 26. B-R7 B-R4  
 27. R-B3 R-B1  
 28. P-B4 P-Kt3

Here, for example, P-R3 was possible (PxP, K-R2; 30. B-K3, RxB).

29. R-Kt1 R-R1  
 30. P-Kt4 RxB  
 31. PxB RxP  
 32. RxP R-R1

- |             |       |           |        |
|-------------|-------|-----------|--------|
| 33. KR-QKt3 | P-R3  | 3. Kt-QB3 | PxP    |
| 34. PxP     | RxP   | 4. KtxP   | Kt-KB3 |
| 35. RxQP    | RxP   | 5. B-Q3   | Kt-B3  |
| 36. R-Q7    | K-R2  | 6. KtxKt  | QxKt   |
| 37. RxPch   | KxP   | 7. Kt-B3  | B-K2   |
| 38. R-Q3    | K-Kt4 | 8. B-Kt5  | Q-B2   |
| 39. P-Q6    | R-Q1  | 9. P-B3   | O-O    |
| 40. P-Q7    | P-K5  | 10. Q-B2  | P-KKt3 |
| 41. R-Q6    | K-B5  | 11. B-R6  | R-K1   |
| 42. R-K7    | K-B6  | 12. P-KR4 |        |
| 43. R-Q1    | P-K6  |           |        |
| 44. R-K1    | P-K7  |           |        |
| 45. P-B7    |       |           |        |

Already Black's Kingside is helpless against this direct attack.

Nicely calculated.

- |          |          |
|----------|----------|
| 45. ...  | R-Kt5ch  |
| 46. K-R1 | Resigns. |

If 46...R-KR1; 47. P-B8/Qch, RxQ; 48. R-K8, and if 46... R-Kt6; 47. R-K8.

BAY AREA TEAM MATCHES - 1959  
MECHANIC'S KNIGHTS VS. OAKLAND

Game No. 466 - French

White	Black
E. Pruner	C. Sedlack

(Notes by R. E. Burger)

- |         |       |
|---------|-------|
| 1. P-K4 | P-K3  |
| 2. P-Q4 | P-KB4 |

As White demonstrates, irregular openings of this kind are often best met by simple development. In many ways, it's like a Dutch Defense, without White's P-QB4.

12. ...	B-B1
13. Kt-Kt5	

A subtlety: the Knight takes up a better position without loss of time.

- |           |       |
|-----------|-------|
| 13. ...   | Q-B3  |
| 14. Kt-K4 | Q-B2  |
| 15. BxB   | RxB   |
| 16. P-R5  | Kt-K2 |
| 17. R-R3  | Kt-B4 |
| 18. O-O-O |       |

There is no hurry, as Black's Queenside will take time to develop.

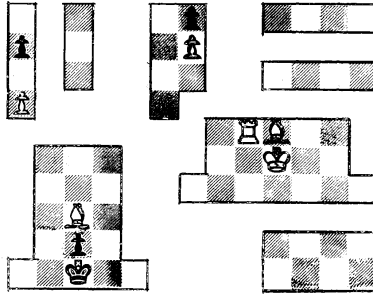
- |            |          |
|------------|----------|
| 18. ...    | Q-K2     |
| 19. PxP    | P-Q4     |
| 20. Kt-Q2  | PxP      |
| 21. Kt-B3  | Q-B3     |
| 22. Kt-K5  | Q-Kt4ch  |
| 23. K-Kt1  | K-Kt2    |
| 24. QR-R1  | K-B3     |
| 25. P-KKt4 | Kt-K2    |
| 26. P-KB4  | Resigns. |

PRECITA VALLEY CLUB ELECTS OFFICERS

Lowell Tullis will guide the affairs of Precita Valley during 1958-59 as Club Director, following the annual September elections. Paul Bogosian will be assistant director for the third successive year. John Ramirez was reelected club treasurer. Team captains are Leighton Allen (Precita Valley) and Mike Kramer (Missions).

REPORTER TASKS: Again we are filling in for our Task Editor, who is in the East on a business trip; so don't blame him for the novelty below. The jig-saw segments are to be set up into a chessboard. For setting up a mate in three, ten points; for each additional thematic three-mover, five points. How many can you find?

TASK No. 143  
(D. G. McIntyre)  
Mate in Three



Solutions should be sent to: Dr. H. J. Ralston  
184 Edgewood Avenue  
San Francisco 17, Calif.