

# CHESS

By E. J. CLARKE

Twenty-two masters are participating in the international chess tournament at Karlsbad. Seventeen countries are represented. Among the contestants is Miss Vera Menchik. Dr. Alexander Alekhine is present in a journalistic capacity, but is not playing. Unfortunately, press dispatches are so irregular it is impossible to give a complete report.

\* \* \* \*

The current British Chess Magazine contains an interesting letter on the subject of the whereabouts of the beautiful inlaid chessboard and gold and silver chessmen presented to Paul Morphy on his return from his European triumphs in 1859 at Columbia University. For some reason it has been assumed that these trophies were owned by the Manhattan Chess Club of New York city. But it is now known that that club never possessed them. A certain Count Gasquet of France is said to have the board. Just where the chess pieces may be is a mystery. The British Chess Magazine writer thinks that they will be discovered somewhere in France.

\* \* \* \*

Since the period when the late Professor Isaac L. Rice of Rice Gambit fame lent his aid to developing chess in colleges and universities, the game has steadily prospered. In the East there are several leagues among the colleges and here at the University of California the chess club numbers over 100 members. In New York city the collegians have the advantage of practice with experts at the regular chess clubs. Following are two games won by Fred Reinfeld of New York University: The one against United States Champion Marshall was played in the Dimock tourney at Marshall's Chess Club, and the victory over Bornholz was played in the important deciding match of the Metropolitan Chess League tourney, Marshalls vs. Manhattans.

### GAME NO. 201

#### RUY LOPEZ

Reinfeld White	Bornholz Black	Reinfeld White	Bornholz Black
1 P-K4	P-K4	16 B-KS3	B-K2
2 S-KB3	S-QB3	17 R-K	S-S3
3 B-S5	P-QR3	18 P-K6	Q-Q3
4 B-R4	S-B3	19 PxPch	KxP
5 Castles	P-QS4	20 QxQ	BxQ
6 B-S3	P-Q3	21 BxR	SxB
7 P-B3	S-QR4	22 R-R7ch	S(S)-Q2
8 B-B2	P-B4	23 S-B3	P-S3
9 P-Q4	Q-B2	24 S-KS5ch	K-B
10 P-QR4	R-QS	25 S-Q5	SxS(K4)
11 RPxP	KPxP	26 RxS	SxS
12 BPxP	RPxP	27 RxS	B-S3
13 PxP	PxP	28 R-R8	K-B2
14 P-K5	S-Q2	29 B-S3	Resigns(a)
15 B-B4	S-QB3		

(a) Black cannot avoid the loss of a piece.

### GAME 202

	ENGLISH		OPENING
Reinfeld White	Marshall Black	Reinfeld White	Marshall Black
1 P-QB4	P-K4	19 Castles (Q)	S-K4
2 P-K3	S-KB3	20 B-K4	B-B3
3 S-QB3	B-S5	21 P-S5	Q-K3
4 Q-S3	S-B3	22 P-Q3	BxB
5 S-B3	Castles	23 QPxP	Q-QB3
6 SxP	BxS	24 QxQ	PxQ
7 QxB	SxS	25 BxS	RxB
8 QxS	R-K	26 P-KR4	P-QR4
9 Q-B3	P-Q4	27 R-Q4	P-R5
10 Q-B2	S-S5	28 RXP	RxR
11 P-B3	S-K4	29 PxR	P-R3
12 PxP	QxP	30 PxP	P-B4
13 B-K2	S-B3	31 R-S	P-P
14 Q-B3	Q-Q3	32 RxPch	K-R
15 P-QS3	B-B4	33 P-B4	R-KR4
16 B-S2	Q-S3	34 RXP	RXP (R5)
17 P-KS4	B-Q2	35 P-R5	and wins
18 B-Q3	Q-R3		

### GAME NO. 203

The following game was played in a team match between the Mercantile Library Chess Association of Philadelphia and the University of Pennsylvania. Stasch

Mlotkowski is well known in Pacific Coast chess circles.

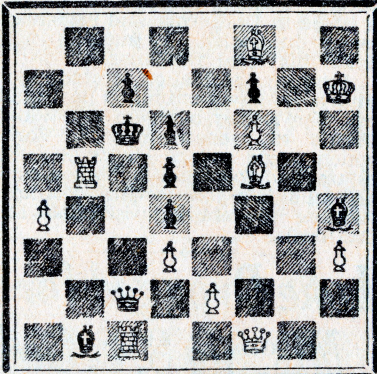
### MUZIO GAMBIT

Mlotkowski White	Drasin Black	Mlotkowski White	Drasin Black
1 P-K4	P-K4	13 BxP	B-S2
2 P-KB4	PxP	14 P-K6	P-Q3
3 S-KB3	P-KB4	15 S-B3	Castles (Q)
4 P-K5	P-KS4	16 QR-K	S-K2
5 B-B4	P-S5	17 B-K2	KR-S
6 Castles	PxS	18 B-B3	BxB
7 QxP	B-B4ch	19 RxB	R-S3
8 P-Q4	BxPch	20 Q-B	QR-S
9 K-R	Q-R5	21 R-R3	Q-B3
10 Q-Q5	S-KR3	22 Q R6ch	K-S
11 QxB	S-B3	23 S-S5	S-B
12 Q-S	P-S3	24 SxRPI	Resigns

## PROBLEMS

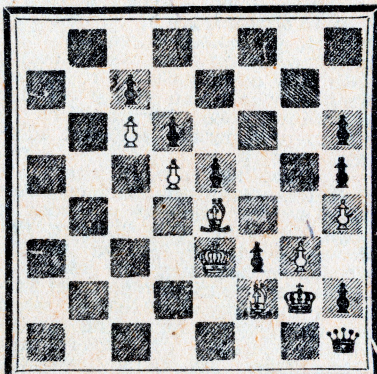
A. J. F.

No. 232—J. Hood, London, England



W(11), B(9)—Mate in Three Moves

No. 233—A. J. Fink, San Francisco



W(7), B(9)—White to play, announced mate in .. moves, without promoting a pawn. In how many moves did White mate?

A prize is offered to the first correct solutions of today's problems. No. 232 has a clever idea, well hidden, and it has proved difficult to many solvers. No. 233 is an example of "zug-zwang."

Solutions: No. 230 (C. L. Bagby), R-B3. No. 231 (Anon's), PxP en passant (instead of RxP from S8).

Solvers' list: Q. M. Spencer, Vallejo; B. Dunipace, Palo Alto; S. A. Reynolds, Butte Meadows; L. E. Davis, Merced; R. W. King, Willits; J. M. Einfalt, Merced; A. R., city; J. E. E., Los Gatos; "X," Stockton; "Typographical" errors will creep in. We notice several in your note! Problem No. 228 is O. K.

## Retail Merchants Arrive Tomorrow

More than 8000 retail merchants and buyers from the Western States, Alaska, Canada and Mexico are expected to pour into San Francisco, beginning tomorrow, for a two weeks' buying bee. Even the Hawaiian islands are sending a contingent of spenders for the annual market week, fostered by the Manufacturers' and Wholesalers' Association. Market week serves to impress upon Western merchants the significance of this city as a market place. B. Reed Munsten is chairman of the venture.