

CHESS

By E. J. CLARKE

El D. Boguljubow of Ukrania, winner of the international tourney at Moscow, 1925, but who finished second to the new German star, Alfred Brinckmann, in the recent Berlin masters' tournament and but seventh at Scarborough, England, has returned to form by winning at Homberg, Germany, over Richard Reti and Dr. Tartakower. Score of the leaders: Boguljubow, 7-3; Reti, 6½ to 3½; Tartakower, 6 to 4.

* * * *

Bernardo Smith, well-known local chess enthusiast and instructor, has just returned from a visit to several nearby chess centers where he succeeded in stirring up considerable interest in the royal game. He visited San Jose, Palo Alto, Santa Cruz, Carmel and reports a lively interest in The Chronicle chess column by chess players of those towns.

* * * *

Rev. Leander Turney of Woodland, nationally known in chess circles since the days of the Pillsbury National Correspondence Chess Association and a periodic visitor at the Mechanics' Institute Chess Club whenever possible for a score of years, writes from Santa Cruz, where he is recuperating from a long illness, to express appreciation of The Chronicle chess column. "I like the sprightly sort of games you have been giving us lately. Thank you very much."

GAME NO. 44

PHILIDOR

The following game, between E. Z. Adams of New Orleans and Carlos Torre, the young Mexican expert, whose rapid rise to fame and mastership startled the chess world several years ago, is most noteworthy. It was probably played while Torre was still a pupil. It will readily be seen that the proffered queen sacrifices cannot be accepted.

Adams (White)	Torre (Black)	Adams (White)	Torre (Black)
1 P-K4	P-K4	13 PxP	P-QB4(d)
2 S-KB3	P-Q3(a)	14 KR-K	R-K
3 P-Q4	PxP	15 R-K2	R-QB
4 QxP	S-QB3(b)	16 QR-K	Q-Q2(e)
5 B-QS5	B-Q2	17 BxS	BxB
6 BxS	BxB	18 Q-KS4	Q-S4(f)
7 S-B3(c)	S-B3	19 Q-QB4(g)	Q-Q2
8 Castles	B-K2	20 Q-B7(h)	Q-S4
9 S-Q5	BxS	21 P-QR4	QxRP(i)
10 PxR	Castles	22 R-K4	Q-S4(j)
11 B-S5	P-B3	23 QxSP(k)	Resigns
12 P-B4	PxP		

NOTES

(a) The Philidor isn't played very often nowadays. Several years ago Nimzowitsch revived it, introducing 3... S-KB3, followed by QS-Q2, etc.

(b) In the notes to the Morphy-Harrwitz match, the correct move here is said to be B-Q2, to prevent the pin.

(c) Morphy vs. Harrwitz here played the forcible B-S5.

(d) Substitute for this indifferent move P-KR3 and the subsequent brilliant queen maneuvers would have been impossible.

(e) A natural move made to free his game by B-Q.

(f) For the benefit of beginners: If QxQ, White mates in two; and if 18, R-Q; 19, QxQ, RxQ, and White mates.

(g) Ditto: The Black queen must defend the KR. Therefore, RxQ is also impossible.

(h) Beautiful!

(i) Ditto (f) note: If QxR; 22 RxQ wins; while if RxQ, White again mates in two moves. Nor will RxR avoid the mate.

(j) Ditto: RxQ, RxR, and QxR are all unavailing.

(k) At last the Black queen is forced off the diagonal, K1 to QR5.

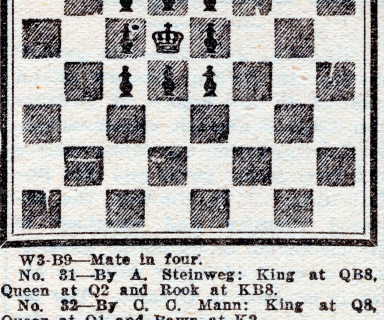
* * * *

PROBLEMS

By A. J. F.

PROBLEMS NOS. 31, 32, 33

(For white force see notations below diagram.)



W3-B9—Mate in four.

No. 31—By A. Steinweg: King at QB8, Queen at Q2 and Rook at KB8.

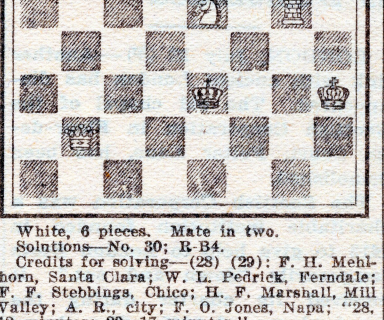
No. 32—By C. O. Mann: King at Q8, Queen at Q1 and Pawn at K2.

No. 33—By A. J. Fink: King at QR4, Queen at KB2 and Knight at QB2.

PROBLEM NO. 34

By S. Loyd

(New York State Chess Association, 1892)
Black—3 pieces



White, 6 pieces. Mate in two.

Solutions—No. 30; R-B4.

Credits for solving—(28) (29): F. H. Mehlhorn, Santa Clara; W. L. Pedrick, Ferndale; F. F. Stebbings, Chico; H. F. Marshall, Mill Valley; A. R., city; F. O. Jones, Napa; "28, 12 minutes; 29, 17 minutes."

R. B. Green, Council Bluffs—First version best and in line for publication.

H. F. M., Mill Valley—Cannot use; not up to standard.

G. Hume, Nottingham—Letter follows.

J. F. S., Tahiti—Original in "De Maasbede" noted.