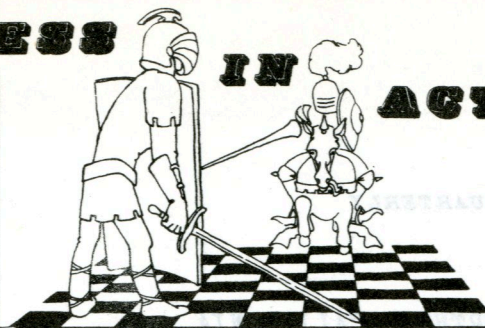
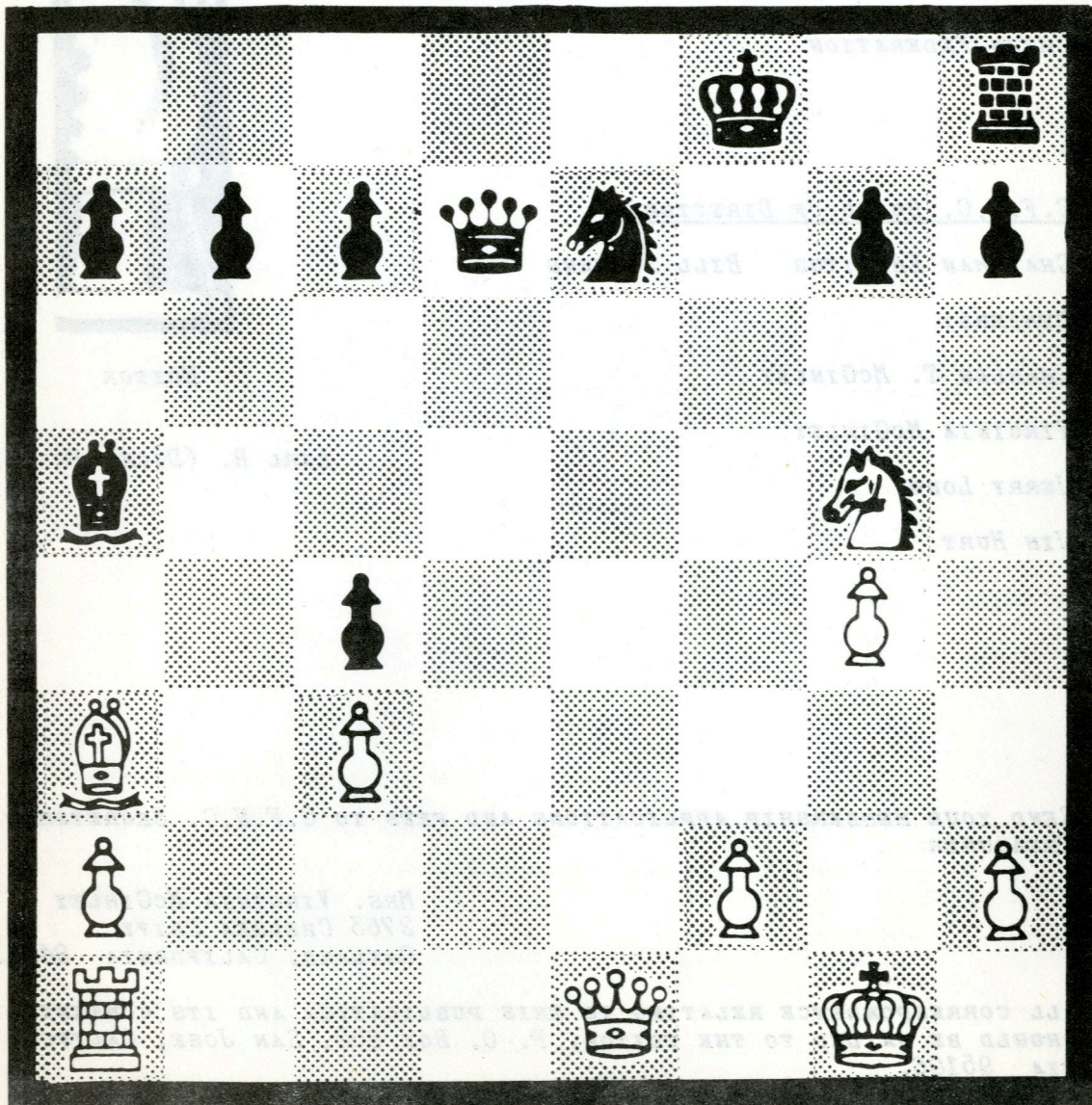


# CHESS IN ACTION



SUMMER 1967



WHITE TO PLAY AND A WIN IS FORCED - KOLTANOWSKI



PUBLISHED QUARTERLY

BY

CHESS FRIENDS OF NORTHERN CALIFORNIA

A CHARTER MEMBER OF THE UNITED STATES  
CHESS FEDERATION

C.F.N.C. BOARD OF DIRECTORS

CHAIRMAN EMERITUS BILL STEVENS

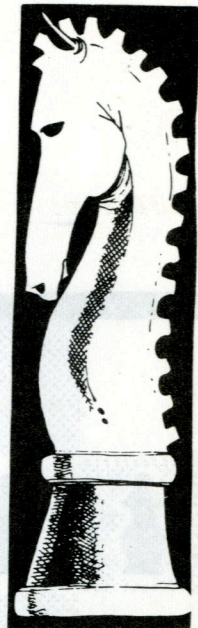
MEMBERS:

CHARLES T. MCGINLEY

VIRGINIA MCGINLEY

JERRY LONG

JIM HURT



EDITOR

EARL R. (DICK) PHILLIPS

SEND YOUR MEMBERSHIP APPLICATIONS AND FEES TO C.F.N.C. SECRETARY-  
TREASURER

MRS. VIRGINIA MCGINLEY  
2763 CHELSEA DRIVE  
OAKLAND, CALIFORNIA 94611.

ALL CORRESPONDENCE RELATING TO THIS PUBLICATION AND ITS CONTENTS  
SHOULD BE MAILED TO THE EDITOR, P. O. BOX 652, SAN JOSE, CALIFOR-  
NIA 95106.



## EDITORIAL

THE POSITION ON OUR COVER WAS SOLVED BY GEORGE KOLTANOWSKI IN BLINDFOLD PLAY. THE KEY MOVE IS 1. R-Q! A KOLTY COMBINATION? OF COURSE, YOU EXPECTED THAT. FRANKLY, WE HAVE COME TO EXPECT A GREAT DEAL OF KOLTY. KOLTY IS AN INSTITUTION IN AMERICAN CHESS; INTERNATIONAL CHESS. WE EXPECT QUALITY WHEN WE HEAR THE NAME KOLTY.

WE STRAY FROM THE STORY. LAST JANUARY YOUR EDITOR WAS TOLD TO REMOVE KOLTY'S NAME FROM THE BOARD OF DIRECTORS' ROSTER. THE REQUEST WAS OVERLOOKED IN OUR SPRING ISSUE. CONSISTENT AND UNRELENTING PRESSURE FORCES OUR ADMISSION AT THIS TIME THAT KOLTY'S RETIREMENT FROM THE C.F.N.C. IS FACT. ALL OF US HOPE HIS ABSENCE IS ONLY TEMPORARY.

THROUGHOUT AMERICAN CHESS CIRCLES KOLTY IS KNOWN TO BE A VITAL PART OF CHESS. PERHAPS TOO MUCH SO. WE PERSONALLY HAVE TRAVELED ACROSS THE COUNTRY AND FOUND THAT WHEREVER CHESS PLAYERS CONGREGATE THERE IS ALWAYS SOMEBODY WHO "KNOWS" KOLTY. NOWHERE HAVE WE FOUND THESE SAME CHESS PLAYERS DISPLAYING THEIR GRATITUDE FOR THE PRODIGIOUS EFFORTS OF KOLTY. THEY EXPECT KOLTY TO DO WHAT HAS TO BE DONE.

NOTWITHSTANDING THE PETTY PERSONAL QUARRELS OF VARIOUS STATE AND NATIONAL CHESS BODIES, THE FACT REMAINS KOLTY DID MORE FOR AMERICAN CHESS THAN ANY OTHER MASTER PLAYER. DURING OUR PROMOTIONAL DAYS, WE HAD THE OPPORTUNITY ON MORE THAN ONE OCCASION TO BE INVOLVED WITH A CHESS CLUB WHOSE REGULAR WEEKLY ATTENDANCE NUMBERED TWENTY-FIVE; WHOSE MEMBERSHIP ROLES NUMBERED ABOUT SEVENTY; AND WHOSE COFFERS HAD A NORMAL STATE OF INSOLVENCY. WE HAVE NEVER CEASED TO WONDER AT THE SHOT IN THE ARM KOLTY COULD GIVE TO SUCH A GROUP.

WE FEEL THAT MR. PATZER OF AMERICAN CHESS OWES KOLTY A SPECIAL THANKS. MORE IMPORTANT WE KNOW THE CURRENT CROP OF EXPERTS AND MASTERS AS WELL AS A MAJORITY OF CURRENT ACTIVE CHESS ORGANIZATIONS, SHOULD GIVE TIME AND EFFORT TO CONTINUING GROWTH IN CHESS AS THIS IS THE REAL COMPLEMENT KOLTY DESIRES.

NO CHESS PLAYER KNOWN TO US WOULD WILLINGLY AND ENTHUSIASTICALLY GIVE THIRTY YEARS OF DEDICATED INTEGRITY TO CHESS IN RETURN FOR THE MEAGER REWARDS AND RECOGNITION GIVEN GEORGE AND LEAH KOLTANOWSKI. LET'S MAKE C.F.N.C. A LEADER IN THE MOVEMENT TO BRING WIDESPREAD RECOGNITION TO KOLTY.



PENINSULA OPEN CHESS CHAMPIONSHIP TOURNAMENT 4/8/67 - 4/9/67

The Second Annual Peninsuls Open Chess Championship Tournament was held at the LERA Chess Club facility in Sunnyvale on the weekend of April 8/9, 1967. A total of 144 players participated. George Koltanowski acted as Tournament Director. John Blackstone won the 27-player USCF Division (\$150.00), and thereby qualified to play in the 1967 California State Championship Tournament to be held in Los Angeles next December. Congratulations John!

Results in the CFNC "A" Division were: First (\$75) J. Hurt; Second (\$40) D. Saccuzzo; Third, Fourth, and Fifth were D. Card, M. Watson, and J. Mecorney (tie-breaks).

Results in the CFNC "B" Division were: First, Second, and Third (\$38.33) were J. Hamaker, L. Wilson, and J. Sutherland (tie-breaks); Fourth and Fifth were R. Miao and J. Verhagen.

Results in the CFNC "C" Division were: First, Second, Third, Fourth, and Fifth (\$23 each) were T. Canfield, J. Scott, F. Valenzuela, J. Allen, and D. Meixsell (tie-breaks). The top five finishers in each CFNC Division were awarded trophies.

The Round-by-Round results for each CFNC Division are presented below. Fifth-round ratings have been altered to include late league-play rating results for those players whose starting ratings did not include all rating changes due to play in the CFNC Winter League. The ratings presented below are thoroughly up-to-date.

CLASS "A"

NAME	START RATING	ROUND 1	ROUND 2	ROUND 3	ROUND 4	ROUND 5	SCORE
1. J. Hurt	1998	D11 1994 W9	2007 BYE	2007 W2	2021 W3	2034	4*-*
2. D. Saccuzzo	1910	W6 1922 W16	1936 W8	1954 L1	1940 W5	1944	4 - 1
3. D. Card	1900	W17 1913 D5	1910 W4	1924 W14	1941 L1	1928	3*-1*
4. M. Watson	1839	D9 1843 W10	1861 L3	1847 W15	1865 W7	1883	3*-1*
5. J. Mecorney	1841	BYE 1841 D3	1844 W16	1860 W11	1880 L2	1866	3*-1*
6. D. Ackerman	1820	L2 1808 BYE	1808 D10	1811 W8	1831 W12	1852	3*-1*
7. A. McKenzie	1884	L8 1871 W11	1888 W12	1901 W10	1915 L4	1897	3 - 2
8. R. Hammie	1957	W7 1970 W13	1982 L2	1964 L5	1944 D11	1944	2*-2*
9. R. Ng	1933	D4 1929 L1	1916 L11	1899 W13	1912 W14	1903	2*-2*
10. J. Barlow	1875	W14 1893 L4	1875 D6	1872 L7	1858 W17	1881	2*-2*
11. A. Lavergne	1900	D1 1904 L7	1887 W9	1904 L6	1884 D8	1873	2 - 3
12. J. Fredgren	1813	L13 1798 W15	1818 L7	1805 W17	1821 L6	1904	2 - 3
13. K. Yamamoto	1846	W12 1861 L8	1849 L14	1836 L9	1823 W15	1841	2 - 3
14. S. Johnson	1936	L10 1918 D17	1913 W13	1926 L3	1909 L9	1881	1*-3*
15. L. Jacobsen	1919	L16 1900 L12	1880 W17	1893 L14	1875 L13	1866	1 - 4
16. R. Cuneo	1844	W15 1863 L2	1849 L5	1833 F	1833 F	1833	1 - 4
17. G. French	1820	L3 1807 D14	1812 L15	1799 L12	1783 L10	1770	* -4*

CLASS "B"

1. Hamaker	1794	W45 1806 W8	1817 W15	1830 W5	1842 D2	1839	4*-*
2. L. Wilson	1714	W38 1727 W41	1743 W4	1762 W9	1779 D1	1782	4*-*
3. J. Sutherland	1605	W46 1621 W20	1640 D10	1645 W7	1666 W11	1683	4*-*
4. R. Miao	1795	W40 1807 W22	1819 L2	1800 W14	1811 W16	1826	4 - 1
5. J. Verhagen	1678	W47 1698 W14	1713 W27	1733 L1	1721 W17	1734	4 - 1
6. D. Amkraut	1785	L22 1765 W38	1775 W31	1790 W33	1800 W15	1839	4 - 1
7. J. Mathis	1746	D44 1742 W23	1757 W13	1775 L3	1754 W18	1778	3*-1*
8. J. Malig	1671	W31 1690 L1	1679 W25	1694 W27	1714 D9	1717	3*-1*
9. W. Thomas	1764	W26 1777 W25	1788 W28	1796 L2	1779 D8	1776	3*-1*
10. V. Fong	1750	W29 1763 W12	1772 D3	1767 L11	1747 F	1747	3*-1*

\* is equal to 1/2.



Peninsula Open Chess Championship Tournament (Cont'd.) - Class "B" (Cont'd.)

NAME	START RATING	ROUND 1	ROUND 2	ROUND 3	ROUND 4	ROUND 5	SCORE
11. J. Fosaaen	1634	D23 1637	W44 1653	W37 1672	W10 1692	L3 1675	3*-1*
12. B. Chinn	1589	D24 1593	L10 1584	W44 1601	W23 1621	W29 1639	3*-1*
13. D. Hoekman	1790	W43 1802	W37 1815	L7 1798	D22 1793	W25 1773	3*-1*
14. R. Yaranon	1663	W35 1682	L5 1667	W21 1685	L4 1674	W30 1689	3 - 2
15. N. Wild	1710	W42 1722	W16 1739	L1 1726	W28 1736	L6 1722	3 - 2
16. M. Lane	1746	W30 1758	L15 1741	W32 1755	W19 1767	L4 1753	3 - 2
17. Z. Vancura	1791	W18 1803	L28 1782	W22 1794	W37 1807	L5 1788	3 - 2
18. R. Gribble	1690	L17 1678	W30 1692	W35 1710	F 1710	L7 1676	3 - 2
19. B. Jansen	1641	L41 1628	W42 1643	W26 1661	L16 1649	W27 1670	3 - 2
20. G. Olsson	1690	W32 1706	L3 1687	F 1687	F 1687	W33 1701	3 - 2
21. H. Poschmann	1716	L25 1697	W47 1715	L14 1697	W39 1709	W26 1724	3 - 2
22. E. Phillips	1679	W6 1699	L4 1687	L17 1675	D13 1679	W28 1691	2*-2*
23. J. Wissel	1712	D11 1709	L7 1694	F 1694	L12 1674	W37 1691	2*-2*
24. H. Richards	1700	D12 1696	W29 1711	W39 1723	F 1723	F 1723	2*-2*
25. D. Burgess	1642	W21 1661	L9 1650	L8 1635	W32 1653	L13 1642	2 - 3
26. E. Devore	1678	L9 1665	W34 1682	L19 1664	W35 1682	L21 1667	2 - 3
27. T. Makens	1790	W36 1802	W39 1811	L5 1791	L8 1771	L19 1750	2 - 3
28. M. Sullivan	1570	BYE 1570	W17 1591	L9 1583	L15 1573	L22 1561	2 - 3
29. H. Tweeden	1669	L10 1656	L24 1642	W45 1659	W31 1678	L12 1673	2 - 3
30. W. Parker	1651	L16 1639	L18 1625	W40 1643	W38 1659	L14 1620	2 - 3
31. J. Bikulcius	1751	L8 1732	W36 1746	L6 1731	L29 1712	F 1712	2 - 3
32. B. Cohen	1700	L20 1684	W46 1696	L16 1682	L25 1664	W39 1677	2 - 3
33. L. Trottier	1642	L37 1629	BYE 1629	W43 1647	L6 1637	L20 1623	2 - 3
34. B. Komsthoeft	1700	L39 1680	L26 1663	W46 1675	D36 1674	D35 1675	2 - 3
35. P. Aubry	1747	L14 1728	W40 1742	L18 1724	L26 1706	D34 1705	1*-3*
36. I. Railey	1682	L27 1670	L31 1656	L38 1638	D34 1639	W45 1655	1*-3*
37. H. Duncanson	1722	W33 1735	L13 1722	L11 1703	L17 1683	L23 1667	1 - 4
38. D. Harris	1638	L2 1625	L6 1615	W36 1633	L30 1617	F 1655	1 - 4
39. R. Harper	1608	W34 1628	L27 1619	L24 1607	L21 1595	L32 1582	1 - 4
40. R. Sharp	1700	L4 1688	L35 1676	L30 1658	W45 1674	F 1674	1 - 4
41. P. Wong	1721	W19 1734	L2 1718	F 1718	F 1718	F 1718	1 - 4
42. A. Gullmes	1619	L15 1607	L19 1592	BYE 1592	F 1592	F 1592	1 - 4
43. P. Vayssie	1681	L13 1669	W45 1686	L33 1668	F 1668	F 1668	1 - 4
44. E. Mugnani	1643	D7 1647	L11 1631	L12 1613	F 1613	F 1612	* - 4*
45. J. Mikl	1700	L1 1688	L43 1671	L29 1654	L40 1638	L36 1622	0 - 5
46. J. Hess	1602	L3 1586	L32 1574	L34 1562	F 1562	F 1562	0 - 5
47. J. Evans	1770	L5 1750	L21 1732	F 1732	F 1732	F 1732	0 - 5

CLASS "C"

1. T. Canfield	1550	W29 1567	W15 1584	W7 1600	W25 1615	D2 1614	4*- *
2. J. Scott	1523	W40 1539	W18 1556	W14 1574	W8 1591	D1 1592	4*- *
3. F. Valenzuela	1581	W21 1596	D4 1595	W42 1609	W43 1622	W10 1638	4*- *
4. J. Allen	1550	W24 1564	D3 1565	W43 1580	W40 1595	W9 1612	4*- *
5. D. Meixsell	1571	D25 1570	W43 1586	W33 1600	W16 1612	W18 1627	4*- *
6. J. Carter	1550	W51 1564	W35 1581	L9 1566	W14 1583	W15 1600	4 - 1
7. T. Cathey	1550	W54 1567	W38 1584	L1 1568	W13 1584	W41 1598	4 - 1
8. J. Johnson	1562	W28 1577	W23 1590	W13 1606	L2 1589	D21 1592	3*-1*
9. E. Ipsen	1575	W36 1590	W41 1605	W6 1620	D10 1619	W4 1602	3*-1*
10. C. Murray	1554	W33 1569	W27 1582	W26 1600	D9 1602	L3 1586	3*-1*

\* is equal to 1/2.



Peninsula Open Chess Championship Tournament (Cont'd.) - Class "C" (Cont'd.)

	NAME	START RATING	ROUND 1	ROUND 2	ROUND 3	ROUND 4	ROUND 5	SCORE
11.	R. Otten	1534	L19 1519	W47 1536	W35 1554	W28 1570	D12 1572	3*-1*
12.	T. Kopczyński	1599	L17 1581	BYE 1581	W32 1596	W26 1612	D11 1610	3*-1*
13.	F. Sommer	1552	W34 1566	W16 1579	L8 1563	L7 1547	W25 1563	3 - 2
14.	C. Isberg	1588	W47 1602	W17 1617	L2 1599	L6 1582	W34 1595	3 - 2
15.	A. Eiche	1585	W46 1600	L1 1583	W41 1598	W17 1613	L6 1596	3 - 2
16.	S. Hibbard	1470	W20 1489	L13 1476	W45 1495	L5 1483	W32 1502	3 - 2
17.	B. Tucker	1550	W12 1568	L14 1553	W50 1567	L15 1552	W27 1566	3 - 2
18.	K. Nail	1554	W44 1568	L2 1551	W51 1564	W20 1580	L5 1560	3 - 2
19.	W. Zimmerman	1562	W11 1577	D42 1576	L25 1559	W44 1573	D22 1573	3 - 2
20.	R. Thompson	1550	L16 1531	W51 1545	W23 1559	L18 1543	W38 1561	3 - 2
21.	A. Schumacher	1548	L3 1533	D40 1532	W52 1547	W42 1563	D8 1564	3 - 2
22.	G. Zonoff	1558	W39 1574	L26 1559	W44 1573	D41 1571	D19 1571	3 - 2
23.	C. O' Brien	1496	W52 1514	L8 1501	L20 1487	F 1487	W37 1507	3-- 2
24.	C. McGhie	1512	L4 1498	L45 1484	W47 1501	W46 1518	W44 1533	3 - 2
25.	F. Goss	1534	D5 1535	W30 1551	W19 1568	L1 1553	L13 1537	2*-2*
26.	D. Lonie	1597	W45 1611	W22 1626	L10 1608	L12 1592	D28 1590	2*-2*
27.	B. Uomini	1470	W31 1489	L10 1476	D30 1478	W34 1496	L17 1486	2*-2*
28.	G. Lee	1534	L8 1519	W48 1536	W37 1554	L11 1538	D26 1566	2*-2*
29.	E. Rowe	1581	L1 1564	W36 1578	L34 1560	D30 1558	W42 1573	2*-2*
30.	R. Segura	1531	D32 1532	L25 1516	D27 1514	D29 1516	W40 1532	2*-2*
31.	J. Spingarn	1550	L27 1531	D32 1532	L40 1515	W33 1531	W43 1547	2*-2*
32.	J. McCavley	1555	D30 1554	D31 1553	L12 1539	W36 1555	L16 1536	2 - 3
33.	J. Cutburth	1525	L10 1510	W46 1527	L5 1513	L31 1497	W48 1514	2 - 3
34.	H. Radke	1513	L13 1499	W52 1516	W29 1534	L27 1516	L14 1503	2 - 3
35.	T. Stewart	1580	W49 1595	L6 1578	L11 1560	W39 1574	F 1574	2 - 3
36.	W. Lang	1541	L9 1526	L29 1512	W48 1528	L32 1512	W49 1528	2 - 3
37.	R. Tucker	1599	L43 1581	W49 1595	L28 1577	F 1577	L23 1557	2 - 3
38.	A. Gardner	1589	W48 1603	L7 1586	BYE 1586	W52 1599	L20 1581	2 - 3
39.	H. Norton	1550	L22 1534	L44 1517	F 1517	L35 1503	W46 1520	2 - 3
40.	T. Adams	1534	L2 1518	D21 1519	W31 1536	L4 1522	L30 1506	1*-3*
41.	W. Richards	1550	W50 1564	L9 1549	L15 1534	D22 1536	L7 1522	1*-3*
42.	J. Dennis	1534	W53 1551	D19 1552	L3 1538	L21 1522	L29 1507	1*-3*
43.	T. Wickham	1550	W37 1568	L5 1552	L4 1537	L3 1524	L31 1508	1 - 4
44.	G. Hackbarth	1514	L18 1500	W39 1517	L22 1503	L19 1489	L24 1474	1 - 4
45.	J. Wilson	1550	L26 1539	W24 1553	L16 1534	F 1534	F 1534	1 - 4
46.	D. Harmon	1550	L15 1535	L33 1518	W49 1534	L24 1517	L39 1500	1 - 4
47.	S. Ferris	1550	L14 1536	L11 1519	L24 1502	L49 1486	W51 1500	1 - 4
48.	V. Schmidt	1550	L38 1536	L28 1519	L36 1503	W51 1517	L33 1500	1 - 4
49.	R. Martin	1544	L35 1529	L37 1515	L46 1499	W47 1515	L36 1499	1 - 4
50.	J. Warner	1490	L41 1476	W53 1494	L17 1480	F 1480	F 1480	1 - 4
51.	B. Hartwell	1499	L6 1485	L20 1471	L18 1458	L48 1444	L47 1430	0 - 5
52.	B. Saccuzzo	1550	L23 1532	L34 1515	L21 1500	L38 1487	F 1487	0 - 5
53.	W. Arcemont	1550	L42 1533	L50 1515	F 1515	F 1515	F 1515	0 - 5
54.	E. Cole	1581	L7 1564	F 1564	F 1564	F 1564	F 1564	0 - 5

\* is equal to 1/2.



WALNUT CREEK CHESS CHAMPIONSHIP TOURNAMENT 4/22/67 - 4/23/67

The Walnut Creek Open Chess Championship Tournament was held at the Walnut Creek Recreation Center on the weekend of April 22/23, 1967. A total of 61 players participated in this CFNC event. The CFNC Tournament Director, Mr. Jerry Long, acted as tournament director.

Congratulations are extended to K. Grivainis as First Place (\$15.00) winner of the "E/A" Division, to D. Betanco as First Place (\$10.00) winner of the "B" Division, and to P. Lekas as First Place (\$5.00) winner of the "C" Division. Second and Third Place winners of the "E/A" Division were R. Mitchell and D. Forthoffer, respectively (tie-breaks). Second and Third Place Winners of the "B" Division were P. Fong and D. Clapp, respectively (tie-breaks). Second and Third Place winners of the "C" Division were A. Eiche and E. Erikson, respectively (tie-breaks). The top three finishers in each Division received trophies.

The Round-by-Round results for each division are presented below. Fifth-round ratings have been altered to include late league-play rating results for those players whose starting ratings did not include all rating changes due to play in the CFNC Winter League.

CLASS "A"

NAME	START RATING	ROUND 1	ROUND 2	ROUND 3	ROUND 4	ROUND 5	SCORE
1. K. Grivainis	2027	W13 2035	W6 2044	W9 2049	D2 2042	D3 2039	4 - 1
2. R. Mitchell	1829	W3 1851	W8 1868	D5 1868	D1 1875	D4 1876	3*-1*
3. D. Forthoffer	1968	L2 1946	W10 1950	W7 1957	W5 1969	D1 1972	3*-1*
4. M. Watson	1883	W7 1893	L9 1871	W6 1886	W11 1897	D2 1886	3*-1*
5. R. Cuneo	1856	D10 1848	W11 1861	D2 1861	L3 1849	W9 1843	3 - 2
6. R. McCollough	1858	W12 1867	L1 1858	L4 1843	W13 1858	W10 1879	3 - 2
7. E. Bartholomew	1737	L4 1727	W14 1735	L3 1728	W12 1742	W8 1726	3 - 2
8. J. Mecorney	1866	W11 1879	L2 1862	D10 1854	W9 1866	L7 1869	2*-2*
9. S. Kilker	1732	W14 1740	W4 1762	L1 1757	L8 1745	L5 1710	2 - 3
10. C. Vail	1650	D5 1658	L3 1654	D8 1662	W14 1672	L6 1678	2 - 3
11. G. French	1783	L8 1770	L5 1757	W12 1770	L4 1759	W13 1776	2 - 3
12. P. Brown	1671	L6 1662	W13 1685	L11 1672	L7 1658	W14 1668	2 - 3
13. D. Hardy	1835	L1 1827	L12 1804	W14 1809	L6 1794	L11 1777	1 - 4
14. J. Barrientos	1535	L9 1527	L7 1519	L13 1514	L10 1504	L12 1494	0 - 5

CLASS "B"

1. D. Betanco	1728	W20 1741	D14 1739	W5 1754	W7 1769	W6 1785	4*- *
2. P. Fong	1747	W24 1760	W15 1773	W3 1788	D6 1787	W12 1800	4*- *
3. D. Clapp	1727	W17 1740	W16 1754	L2 1739	W15 1753	W7 1790	4 - 1
4. J. Evans	1732	L16 1713	W9 1726	W17 1739	W8 1753	W10 1764	4 - 1
5. S. Mujahed	1706	D9 1703	W13 1715	L1 1700	W14 1715	W17 1662	3*-1*
6. H. Poschman	1724	W21 1736	W25 1749	W18 1764	D2 1765	L1 1749	3*-1*
7. N. Smith	1681	W23 1694	W11 1706	W14 1721	L1 1706	L3 1606	3 - 2
8. B. Jansen	1670	L11 1651	W26 1665	W13 1678	L4 1664	W19 1677	3 - 2
9. J. Friedman	1627	D5 1630	L4 1617	D20 1617	W21 1632	W18 1644	3 - 2
10. A. Gullmes	1592	L15 1579	W20 1597	W16 1616	W18 1636	L4 1625	3 - 2
11. R. Jacob	1586	W8 1605	L7 1593	F 1593	L12 1582	W16 1541	3 - 2
12. R. Schneider	1702	L22 1683	W21 1696	W23 1709	W11 1720	L2 1707	3 - 2

\* is equal to 1/2



Walnut Creek Chess Championship Tournament (Continued) - Class "B" (Cont'd.)

NAME	START RATING	ROUND 1	ROUND 2	ROUND 3	ROUND 4	ROUND 5	SCORE
13. G. Bigelow	1604	BYE 1604	L5 1592	L8 1579	W20 1597	W15 1590	3 - 2
14. J. Fosaaen	1675	W19 1688	D1 1690	L7 1675	L5 1660	W22 1664	2*-2*
15. E. Phillips	1679	W10 1692	L2 1679	W22 1693	L3 1679	L13 1660	2 - 3
16. W. Cox	1660	W4 1679	L3 1665	L10 1646	W22 1661	L11 1642	2 - 3
17. B. McGee	1641	L3 1628	W19 1642	L4 1629	W23 1644	L5 1631	2 - 3
18. R. Quintero	1705	W26 1718	W22 1731	L6 1716	L10 1696	L9 1697	2 - 3
19. J. Scott	1592	L14 1579	L17 1565	W21 1583	W24 1601	L8 1588	2 - 3
20. J. Bush	1652	L1 1639	L10 1621	D9 1621	L13 1603	W23 1604	1*-3*
21. J. Mikl	1632	L6 1620	L12 1607	L19 1589	L9 1574	BYE 1574	1 - 4
22. L. Trotter	1623	W12 1642	L18 1629	L15 1615	L16 1600	L14 1582	1 - 4
23. J. Gillis	1615	L7 1602	W24 1620	L12 1607	L17 1592	L20 1590	1 - 4
24. J. Weiler	1661	L2 1648	L23 1630	F 1630	L19 1612	F 1611	1 - 4
25. A. Schulz	1660	BYE 1660	L6 1647	F 1647	F 1647	F 1647	1 - 4
26. F. Miller	1624	L18 1611	L8 1597	F 1597	F 1597	F 1597	0 - 5

CLASS "C"

1. P. Lekas	1544	W19 1561	W6 1573	W2 1591	W5 1604	W3 1619	5 - 0
2. A. Eiche	1596	W4 1610	W8 1622	L1 1604	W14 1618	D10 1616	3*-1*
3. E. Erikson	1550	D7 1547	W21 1559	W13 1570	W9 1586	L1 1571	3*-1*
4. N. Zadeh	1550	L2 1536	W15 1552	W8 1566	W18 1580	D7 1577	3*-1*
5. D. Glanville	1502	L11 1488	W7 1504	W17 1523	L1 1510	W14 1541	3 - 2
6. D. Mitchell	1432	W15 1453	L1 1441	W21 1457	D10 1462	D9 1466	3 - 2
7. G. Hackbarth	1474	D3 1477	L5 1461	W19 1480	W16 1499	D4 1502	3 - 2
8. B. Lamont	1496	W14 1514	L2 1502	L4 1488	W20 1505	W16 1522	3 - 2
9. D. Reich	1550	D21 1546	W11 1563	W18 1577	L3 1561	D6 1618	3 - 2
10. R. Thompson	1561	L18 1543	W16 1560	W20 1575	D6 1570	D2 1572	3 - 2
11. G. Zonoff	1558	W5 1572	L9 1555	F 1555	W21 1566	W15 1580	3 - 2
12. S. Smith	1450	W20 1470	L17 1458	L14 1446	BYE 1446	W18 1464	3 - 2
13. J. Dorfman	1430	BYE 1430	D18 1434	L3 1423	L15 1411	W19 1432	2*-2*
14. J. Breen	1550	L8 1532	W19 1549	W12 1561	L2 1547	L5 1530	2 - 3
15. P. Westerline	1550	L6 1529	L4 1513	BYE 1513	W13 1525	L11 1555	2 - 3
16. C. Hiden	1548	W17 1566	L10 1549	F 1549	L7 1530	L8 1513	2 - 3
17. D. Campbell	1588	L16 1570	W12 1582	L5 1563	L19 1545	W21 1556	2 - 3
18. J. Dennis	1507	W10 1525	D13 1521	L9 1507	L4 1493	L12 1539	1*-3*
19. A. Boyd	1566	L1 1549	L14 1532	L7 1513	W17 1531	L13 1510	1 - 4
20. H. Walsh	1550	L12 1530	BYE 1530	L10 1515	L8 1498	F 1498	1 - 4
21. S. Bass	1451	D9 1455	L3 1443	L6 1427	L11 1416	L17 1365	* -4*

\* is equal to 1/2.



CFNC FINAL RATING LIST AS OF JUNE 1, 1967,  
BY RATING ADMINISTRATOR JIM HURT

This rating list has been established from the following events: 1. Fall 1966 CFNC Rating List; 2. Northern California Class Champ. at Lockheed 9/17 & 9/18/66; 3. Oct. Open - Berkeley 10/22 & 10/23/66; 4. CFNC - Berkeley 1/22 & 1/23/67; 5. Concord Open 2/18 & 2/19/67; 6. Peninsula Open 4/8 & 4/9/67; 7. Walnut Creek 4/22 & 4/23/67; 8. Peninsula League; 9. East Bay League; 10. El Camino Real League; 11. IBM at 3/27/67; 12. Lockheed A, B, and C Tourney.

M . . . Master . . . . . 2200 and above  
E . . . Expert . . . . . 2000 to 2199  
A . . . Advanced . . . . . 1800 to 1999  
B . . . Intermediate . . . 1600 to 1799  
C . . . Average . . . . . 1599 and below

R. Abelson	1721	J. Barrientos	1494	D. Bogdanoff	1954
D. Ackerman	1852	P. Barry	1675	R. Boles	1819
W. Adair	1412	E. Bartholomew	1726	M. Bowen	1642
T. Adams	1506	C. Barton	1563	G. Bower	1530
W. Adams	1962	T. Bartos	1557	A. Boyd	1566
S. Adelman	1864	S. Bass	1365	C. Boynton	1470
L. Adkins	1716	M. Bastiani	1536	G. Bradley	1464
E. Albrecht	1585	DR. H. Bauer	1828	O. Brandt	1608
Dr. J. Alden	1782	C. Beale	1603	J. Breen	1530
R. Alexander	1653	F. Beans	1492	O. Bridges	1630
Rob. Alexander	1572	H. Bear	1623	E. Britton	1545
D. Allais	1640	G. Bechtell	1394	K. Brown	1516
J. Allen	1612	C. Beem	1515	L. Brown	1814
W. Allen	1536	P. Beem	1500	P. Brown	1651
J. Almond	1554	R. Belcher	1640	S. Brown	1568
K. Altman	1588	J. Bell	1500	T. Brown	1901
W. Amberstone	1542	D. Beltram	1680	A. Buchanan	1682
E. Ambrose	1661	D. Bennett	1634	G. Budowski	2111
D. Amkraut	1839	E. Bent	1470	J. Burchfield	1425
E. Anders	1924	F. Bent	1476	D. Burgess	1605
A. Anderson	1846	R. Bentson	1684	M. Burns	1428
T. Anderson	1497	F. Berry	1734	J. Bush	1604
N. Andres	1648	D. Betanco	1814	G. Butler	1968
J. Antuna	1519	S. Bettencourt	1802	H. Byrne	1715
W. Arcemont	1515	W. Bettencourt	1680	T. Byrne	1726
T. Arkley	1594	T. Beyrle	1510		
P. Arnstein	1507	J. Biernat	1664	A. Cabral	1652
P. Aubry	1705	G. Bigelow	1590	Caccamo	1607
E. Aurand	1608	J. Bikulcius	1693	J. Camahort	1767
R. Ausmus	1570	C. Black	1548	D. Campbell	1556
		J. Blackstone	2238	T. Canfield	1614
		M. Block	1402	E. Caracciola	1566
N. Babbitt	1817	D. Blohm	2154	D. Card	1962
A. Bacalski	1430	L. Blonarouych	2008	R. Carlisle	1882
R. Baker	1882	L. Bobeda	1842	C. Carothers	1397
D. Balfe	1922	R. Boehme	1532	B. Carter	1901
J. Barlow	1897	G. Boer	1902	C. Carter	1783
H. Barnett	1566	E. Bogas	2065	J. Carter	1600
Z. Baroudi	2224	T. Beard	1516	T. Cathey	1598
				P. Bryant	1510



R. Castro	1594	M. Crossland	1607	C. Ehman	1646
R. Chako	1633	J. Culp	1533	A. Eiche	1616
W. Chamberlain	1712	R. Cuneo	1843	D. Ekman	1431
Dr. A. Chappell	1867	W. Currie	1718	E. Engel	1784
J. Charman	1742	J. Cutburth	1514	P. Enright	1633
C. Chattin	1653			E. Erikson	1571
L. Chill	1774	Col. C. Daly	1784	J. Evans	1764
D. Chin	1838	E. Dana	1868	N. Evans	1533
W. Chin	1626	M. Davis	1586	F. Everitt	1386
B. Chinn	1639	P. Davis	1548		
R. Chinn	1589	D. Day	1458	C. Falbo	1726
W. Chong	1778	T. Defisi	1517	J. Falbo	1414
R. Christian	1842	K. Deibler	1547	G. Farly	1924
L. Cizinsky	1924	P. Delmonte	1714	R. Farris	1516
D. Clapp	1790	G. Denisenko	1586	M. Feliz	1558
D. Clark	2008	J. Dennis	1539	E. Fenzl	1506
A. Clarren	1556	E. Deriso	1662	S. Ferris	1500
R. Clipson	1666	D. Detrick	1484	K. Field	1746
W. Clipson	1557	E. Devore	1667	W. Fields	1679
E. Clot	1501	D. Dickinson	1530	R. Fifer	1705
P. Coffino	1968	R. Dickinson	2016	P. Flax	1558
A. Cohen	1642	G. Dillon	1480	P. Fleischer	1432
B. Cohen	1677	J. Dirks	1460	J. Fliegel	2182
E. Cole	1564	B. Dobsevege	1651	G. Foley	1468
O. Conger	1566	H. Dodson	1476	P. Fong	1800
J. Conness	1394	I. Dolnicar	1502	V. Fong	1747
D. Conwit	2042	J. Dorfman	1432	B. Foreman	1910
E. Cook	1564	W. Dorne	1978	W. Forest	1430
F. Cook	1814	A. Dos Santos	1609	R. Forsyth	1747
L. Cook	1634	C. Drew	1538	D. Forthoffer	1972
T. Cook	1760	D. Drinkwater	1621	J. Fosaaen	1664
D. Cooke	1857	H. Dryfoos	1518	R. Fournier	1972
W. Coombs	1539	H. Duncanson	1667	F. Fraass	1544
J. Cornwell	1647	L. Dunning	1687	T. Franciotti	1698
W. Cox	1642	J. Dwyer	1721	Frank	1792
D. Crawford	1888			J. Fredgren	1904
R. Creet	1674	L. Eaton	1859	C. Freeman	2002
R. Cromwell	1704	P. Eckles	1446	Don French	1558
		S. Edlund	1552	Doug. French	1512
				G. French	1776

**NOTE:** For those players who are unfamiliar with the IRS (Instantaneous Rating System) utilized by the CFNC, the following explanation will be helpful. The IRS gives each player the opportunity to calculate his own rating at the end of each tournament game. The calculation is quite simple, and is verified by the CFNC Rating Administrator or his designated alternate, and is then posted on the wall charts in the tournament hall. The change in rating is calculated in two steps as follows: **STEP One:** your handicap rating is determined before the game is played by (a) subtracting 4% of the difference in ratings from the rating of the higher-rated player, and (b) adding this 4% figure to the rating of the lower-rated player. This establishes the handicap rating of each player. The game is then played. **STEP Two:** after the game has been played, 16 points is subtracted from

(continued on next page)



J. Friedman	1644	R. Gunderson	1620	F. Hodger	1486
D. Fritzingler	1968	A. Gunston	1608	D. Hoekman	1773
R. Furnoy	1630	Guzman	1652	R. Hofvendahl	1579
A. Gaede	1531	G. Hackbarth	1502	T. Hogan	1657
M. Galindez	1640	A. Hall	1630	Dr. H. Hook	1656
G. Garcia	1640	B. Hall	1584	R. Horn	1622
A. Gardner	1581	R. Hall	1708	D. Horodysky	1568
M. Gardner	1643	D. Hallinan	1854	R. Hough	1861
B. Garrison	1714	F. Hamaker	1839	J. Hudson	2248
M. Gazse	1839	R. Hammie	1944	L. Hughes	1802
R. Geis	1450	R. Hansen	1859	C. Huneke	1899
J. Gensler	1482	D. Hardy	1777	Huntington	1523
L. Gerard	1607	D. Harmon	1500	J. Hurt	2034
C. Giallanza	1493	J. Harper	1501	Dr. J Hutch	1680
W. Giles	1632	R. Harper	1582	R. Hutchinson	1550
J. Gillis	1590	D. Harris	1655	R. Ingram	1778
D. Giuliani	1786	T. Harris	1669	E. Ipsen	1602
H. Glading	1600	R. Hart	1824	H Irwin	1968
D. Glanville	1541	Robert Hart	1974	J. Irwin	1528
A. Golbert	1765	R. Hartman	1921	C. Isberg	1727
M. Goodall	1924	B. Hartwell	1430	W. Jachens	1652
J. Goodwin	1482	T. Hattery	1567	B. Jacks	1545
W. Goodwin	1604	J. Hauke	1726	B. Jacob	1558
M. Gorse	1600	J. Hauptman	1538	R Jacob	1541
F. Goss	1537	J. Hauser	1796	D. Jacobsen	1641
J. Gough	1888	G. Hayes	1528	L. Jacobsen	1874
J. Greenwald	1642	C. Heiler	1544	J. Jaffray	2026
P. Gregory	1608	L. Heiler	1969	B. Jansen	1677
P. Grey	2090	C. Helmka	1634	J. Jee	1712
R. Gribble	1676	R. Henderson	1810	E. Jensen	1698
R. Grillo	1558	W. Hendricks	2064	J. Johnson	1592
K. Grivanis	2039	R. Henry	2072	M. Johnson	1523
Dr. B. Gross	1922	J. Hess	1562	S. Johnson	1881
M. Gross	1702	S. Hibbard	1502	P. Jones	1552
K. Grover	2006	F. Hibbeler	1666	W. Joplin	1678
C. Gruenwald	1450	C. Hiden	1513		
S. Guins	1605	A. Hill	1778		
A. Gullmes	1625	R. Hill	1580		
		P. Healey	1574		

the handicap rating of the loser of the game, and 16 points is added to the handicap rating of the winner of the game (if the game is drawn, the handicap ratings become the final ratings). This is the end of the calculations. These ratings are the final ratings for this game, and automatically become the initial ratings for the next game to be played. The new CFNC score sheets have spaces at the top of the page for these calculations, and they have a 4% table at the bottom of the page to simplify the 4% calculation. Please use these score sheets for your games.



A. Kanamori	2108	A. Long	1628	J. Mikl	1574
G. Kane	2018	J. Long	1753	C. Miller	1620
M. Kapchuck	1725	D. Lonie	1590	F. Miller	1597
A. Kaye	1571	A. Lubovich	1492	M. Miller	1512
J. Kelley	1762	N. Lucey	1552	D. Mitchell	1466
M. Kelsey	1840	J. Luna	1481	R. Mitchell	1876
D. Kendall	1875	D. Lynn	1824	W. Montfort	1808
S. Kilker	1710			A. Montgomery	1496
L. Kirkendall	1592	D. Mac Donell	1444	C. Montgomery	1582
D. Klepper	1555	A. Mac Neill	1628	W. Moore	1506
D. Klonoff	1512	H. Maeger	1647	M. Morrison	1381
A. Knack	1718	H. Mager	1576	J. Morton	1646
G. Koloboff	1738	H. Mager, Jr.	1508	P. Moser	1618
B. Komsthoft	1675	J. Maguire	1730	A. Mueller	1336
T. Kopczynski	1610	J. Makens	1799	E. Mugnani	1612
L. Korens	1727	T. Makens	1750	S. Mujahed	1662
P. Korf	1532	Dr. J. Malig	1717	R. Murian	1687
K. Kreutz	1534	R. Malmstrom	1507	C. Murray	1586
Dr. E. Kupka	1808	H. Malone	1377	J. Myers	1942
D. Kyle	1616	E. Marnell	1502	B. Nace	1673
		J. Martin	1486	K. Nail	1519
La Bonte	1448	R. Martin	1498	P. Nash	1650
P. Lamasney	1818	J. Mathis	1778	D. Nason	1874
R. Lambert	1528	A. McCallen	1559	T. Nast	1797
B. Lamon	1522	J. McCarley	1555	F. Neal	1834
R. Lamon	1640	J. McCauley	1536	D. Nees	1732
L. Lane	1404	R. McClary	1884	S. Nelson	1496
M. Lane	1788	R. Mc Collough	1879	O. Nero	1482
W. Lang	1528	P. Mc Ellaney	1626	N. Nettheim	2018
R. Lanouette	1486	B. McGee	1631	N. Newcomer	1502
P. LaPorte	1617	Dr. M. McGee	1612	H. Newman	1587
A. LaRue	1772	C. McGhie	1533	R. Newlander	2096
J. Lasich	1755	C. McGinley	1781	M. Newton	1596
P. Lasso	1699	D. McGough	1568	R. Ng	1903
R. Laver	2179	J. McIlrath	2008	D. Nichols	1492
A. Lavergne	1873	W. McKaig	1715	O. Nichols	1582
A. Lee	2038	A. McKenzie	1897	R. Niedbalee	1500
G. Lee	1566	D. McLeod	1654	F. Nielsen	1684
R. Lee	1726	E. McMillan	1508	P. Nielsen	1757
C. Leete	1724	D. Meador	1453	L. Nordell	1603
P. Lekas	1619	J. Mecorney	1869	H. Norton	1520
L. Leonard	1502	R. Meier	1582	S. Norton	1666
C. Lewis	1716	D. Meixsell	1627	J. Notor	1588
P. Lewis	1659	P. Mendel	1581	M. Nunziata	1571
W. Lewis	1480	G. Metcalf	1502	N. Oaklander	1642
D. Lieberman	1710	M. Methven	1788	C. O'Brien	1507
A. Liff	1532	W. Meyer	1670	G. Olsson	1701
D. Litowsky	1818	E. Meyers	1745	F. Olvera	1708
D. Livingood	1504	R. Miao	1826		



R. Onstead 1510  
K. Oppenheimer 1520  
D. Ortega 1582  
E. Osbun 2233  
L. Ostering 1652  
D. Ostrowski 1830  
F. Otero 1697  
R. Otten 1572  
J. Owen 1718  
J. Oyler 1486  
R. Oyler 1621

J. Packard 1636  
R. Palasek 1548  
Z. Papparigian 1514  
R. Paradiso 1769  
C. Parcels 1752  
W. Parker 1620  
F. Parkes 1657  
W. Parks 1702  
L. Parsons 1634  
A. Partansky 1708  
L. Parvu 1736  
D. Peizer 2088  
D. Pelletier 1659  
P. Perillo 2056  
E. Perini 1550  
P. Pernish 1510  
F. Perry 1636  
M. Perry 1862  
J. Peterson 1636  
J. Peterson 1735  
D. Philley 2034  
E. Phillips 1660  
G. Pickler 1873  
I. Pohl 2064  
W. Poindexter 1636  
E. Pointer 1808  
H. Pollak 1640  
H. Poschman 1749  
L. Post 1818  
J. Powell 1525  
J. Prebus 1888  
D. Prieur 1761  
J. Puechner 1506  
L. Pust 1614  
M. Pust 1642

J. Quanstrom 1640  
M. Quinlan 1939  
R. Quintero 1697

R. Rackett 1438  
A. Rackwitz 1766  
H. Radke 1503  
I. Railey 1655  
R. Raingruber 1725  
A. Ramirez 1583  
J. Ramos 1518  
W. Randlett 1508  
J. Ransen 1690  
D. Rapoport 1749  
M. Rasmussen 1660  
R. Reed 1630  
R. Reich 1618  
N. Reider 1777  
J. Reynolds 1796  
D. Rhodes 1534  
D. Richards 1486  
H. Richards 1723  
J. Richards 1509  
W. Richards 1522  
R. Rickett 1732  
M. Rivera 1570  
J. Roberts 1808  
J. Robino 1512  
W. Rogers 1916  
G. Rosen 1560  
T. Ross 1550  
R. Roubal 1714  
G. Roust 1677  
E. Rowe 1573  
G. Roy 1693  
H. Russell 1610

M. Sable 1760  
B. Saccuzzo 1487  
D. Saccuzzo 1944  
L. Salin 1520  
J. Salna 1907  
E. Salo 1498  
D. Sanks 1494  
T. Sass 1542  
Saunders 1534  
S. Sawyer 1980

J. Scheurman 1784  
M. Schmidt 1522  
V. Schmidt 1500  
R. Schneider 1707  
W. Schneider 1536  
F. Schoene 1985  
W. Schraeder 1624  
Schreiber 1533  
C. Schroth 1971  
A. Schulz 1647  
A. Schumacher 1564  
P. Schure 1638  
R. Schutt 2268  
F. Schwab 1567  
L. Schwartz 1922  
J. Scott 1588  
R. Segura 1532  
L. Selfridge 1502  
L. Seltzer 1638  
S. Shahshahari 1603  
R. Sharp 1674  
R. Shean 2120  
R. Shorman 1991  
E. Silva 1505  
S. Silven 1761  
T. Simon 1532  
Sims 1827  
J. Slagle 1674  
A. Sletner 1642  
S. Sloan 2099  
W. Sloan 1525  
M. Sloane 1527  
J. Small 2038  
N. Smirioa 1604  
B. Smith 1522  
D. Smith 1713  
Dennis Smith 1512  
H. Smith 1795  
K. Smith 1436  
N. Smith 1606  
R. Smith 1510  
Stephen Smith 1590  
Steven Smith 1371  
S. Smith 1464  
W. Smith 1588  
D. Smullin 1766  
B. Sobotka 1498  
S. Socchi 1543



S. Soderlund	1572	F. Thompson	1470	L. Wait	1847
E. Solve	1638	G. Thompson	1639	J. Wallan	1808
F. Sommer	1563	L. Thompson	1680	H. Walsh	1498
D. Soucy	1682	R. Thompson	1948	J. Walter	1658
J. Spingarn	1547	Rik. Thompson	1572	A. Wang	2185
T. Stamper	1656	J. Tibbetts	1564	J. Warner	1480
W. Stark	1872	G. Tramaglino	1518	M. Watson	1886
A. Steele	1398	K. Travers	1685	Watts	1661
F. Steenhard	1735	R. Trenberth	1917	N. Weaver	2314
B. Steiner	1514	F. Trentacosta	1528	G. Weber	1813
R. Steinmeyer	1510	S. Tresz	1647	M. Weber	1734
L. Semper	1531	J. Trimmingham	1576	W. Wehrmeister	1870
S. Sternlieb	1772	L. Trottier	1582	J. Weiler	1611
W. Stevens	1826	B. Tucker	1566	P. Weintraub	1535
C. Stewart	1603	R. Tucker	1557	F. Weintraub	1752
J. Stewart	1676	K. Tullus	2218	P. Westerline	1555
T. Stewart	1595	L. Turner	1694	D. Western	1500
K. Stone	1824	H. Tweeden	1692	J. Wheeler	1596
C. Sullivan	1722			T. Wickham	1508
M. Sullivan	1561	S. Udman	1652	L. Wiedenmeyer	1680
E. Summers	1678	J. Ulrich	2035	N. Wild	1722
D. Sutherland	2136	B. Uomini	1486	Wiley	1640
J. Sutherland	1683			M. Wilkerson	2046
T. Syrett	2070	C. Vail	1678	J. Williams	1652
		F. Valenzuela	1638	L. Williams	1609
R. Tamayo	1690	Z. Vancura	1809	R. Williams	1534
M. Tamm	1570	Vann	1632	R. Willis	1669
E. Tapia	1651	E. Vargas	1592	J. Willows	1691
J. Taylor	1658	P. Vayssie	1668	J. Wilson	1534
T. Terman	1682	D. Venturini	1741	L. Wilson	1782
B. Tesar	1695	J. Verhagen	1734	R. Winkelman	1772
P. Tesk	1830	N. Volk	1760	W. Wise	1698
G. Teslawski	1768	F. Votruba	1635	J. Wissel	1660
R. Thacker	2054	J. Votruba	1535	H. Woest	1608
W. Thomas	1776	Z. Vybiral	2130	C. Wong	1535
				P. Wong	1720
				T. Wong	1588
				G. Wooley	1626
				G. Wren	1820
				K. Yamamoto	1841
				R. Yaranon	1689
				Yen	1637
				C. Young	1802
				B. Youngberg	1629
				N. Zadeh	1577
				J. Zichwic	1587
				B. Zilm	1551
				J. Zimmer	1460
				P. Zink	1571
				G. Zonoff	1580
				W. Zimmerman	1573

**NOTE:** Supplements to this rating list will appear in the next issue of Chess in Action magazine, and the next semi-annual full rating list will appear in this magazine approximately next November, 1967.



BERKELEY THIRD ANNUAL

SUMMER OPEN CHESS TOURNAMENT

DATE: . . . . . JUNE 10 & 11, 1967, SAT. AND SUN.

PLACE: . . . . . BERKELEY Y.M.C.A. PALM ROOM  
2001 ALLSTON WAY, BERKELEY, CALIF. (94704)

ELIGIBILITY: . . . . . OPEN TO ALL CHESS PLAYERS WHO ARE OR WHO  
WILL BECOME MEMBERS OF CHESS FRIENDS OF  
NORTHERN CALIFORNIA. MEMBERSHIP INCLUDES  
SUBSCRIPTION TO C.F.N.C.'S CHESS IN ACTION,  
WHICH IS ISSUED QUARTERLY.

PRIZES: . . . . . "E/A" DIVISION: 1ST PLACE; \$15. PLUS  
TROPHY, 2ND & 3RD PLACES; TROPHIES, 4TH &  
5TH PLACES; MEDALLIONS.  
"B" DIVISION: 1ST PLACE; \$10. PLUS TROPHY  
2ND & 3RD PLACES; TROPHIES, 4TH & 5TH  
PLACES; MEDALLIONS.  
"C" DIVISION: 1ST PLACE; \$5. PLUS TROPHY  
2ND & 3RD PLACES; TROPHIES, 4TH & 5TH  
PLACES; MEDALLIONS.

NOTE: CASH PRIZES SUBJECT TO INCREASE IF ENTRY RECEIPTS EXCEED EIGHTY.

ENTRY FEE: . . . . . \$4.00 FOR C.F.N.C. MEMBERS  
\$7.00 FOR NON-MEMBERS

PROGRAM: . . . . . FIVE ROUND SWISS - REGISTRATION 10AM-NOON  
SATURDAY, JUNE 10, 1967.

ROUND 1 . . . . .	SATURDAY	JUNE 10	12 NOON
ROUND 2 . . . . .	SATURDAY	JUNE 10	3:30 P.M.
ROUND 3 . . . . .	SUNDAY	JUNE 11	9:00 A.M.
ROUND 4 . . . . .	SUNDAY	JUNE 11	12:30 P.M.
ROUND 5 . . . . .	SUNDAY	JUNE 11	4:00 P.M.

THIS TOURNAMENT IS FULLY RATED BY C.F.N.C.

NOTE: BRING SETS AND CLOCKS IF AVAILABLE.

ADVANCE REGISTRATION: PLEASE MAKE CHECKS PAYABLE TO:

JERRY LONG, TREASURER, 4080 POPLAR AVE., CONCORD, CALIF. 94521,  
PHONE: 682-3497.

PLEASE ENTER ME IN THE BERKELEY OPEN CHESS TOURNAMENT

NAME \_\_\_\_\_ PHONE \_\_\_\_\_  
ADDRESS \_\_\_\_\_ CITY \_\_\_\_\_ ZIP \_\_\_\_\_

I AM A CLASS \_\_\_\_\_ PLAYER. (IF UNRATED, CHECK HERE \_\_\_\_\_)  
ENCLOSED IS \$4.00 FOR C.F.N.C. MEMBER \_\_\_\_\_  
ENCLOSED IS \$7.00 FOR NON-MEMBER \_\_\_\_\_



CHESSE FRIENDS OF NORTHERN CALIFORNIA  
2763 CHELSEA DRIVE  
OAKLAND, CALIFORNIA 94611

FIRST ANNUAL SAN BRUNO CHESS TOURNAMENT

JULY 4, 1967

COMMENCING 10:00 A.M. AND CONTINUING UNTIL 6:00 P.M. AT BECKNER FIELD IN SAN BRUNO, FRIENDS, RELATIVES, CHILDREN, GRANDPARENTS, BON VIVANTS ALL WILL GATHER FOR A DAY'S CHESS ACTIVITIES.

THERE WILL BE A TOURNAMENT CONSISTING OF FOUR PLAYERS WHO WILL PLAY THREE GAMES EACH FOR EVERY FOUR ENTRANTS. SIMULTANEOUS EXHIBITION AND A PROBLEM SOLVING CONTEST IS ALSO OFFERED. ALL MANNER OF AWARDS AND PRIZES WILL BE GIVEN.

ENTRY FEES ON OR BEFORE JUNE 20, 1967 - \$2.00. AFTER JUNE 20 FEE IS \$3.00. FULL PARTICULARS FROM DICK KING, MANAGER, SAN BRUNO CHAMBER OF COMMERCE, 502 SAN MATEO AVE., SAN BRUNO, CALIF. 94066. PHONE: 415 AREA CODE, 588-0180.

YOU MAY BRING YOUR OWN PICNIC BASKETS OR ENJOY A GIANT BARBECUE OR PURCHASE YOUR LUNCH AND DRINKS FROM FOOD CONCESSIONS AT NOMINAL PRICES. THERE ARE FACILITIES FOR TENNIS, BASEBALL, SOFT-BALL, SWIMMING AND JUST PLAIN LOAFING!

SEE YOU THERE!