

C H E S S .

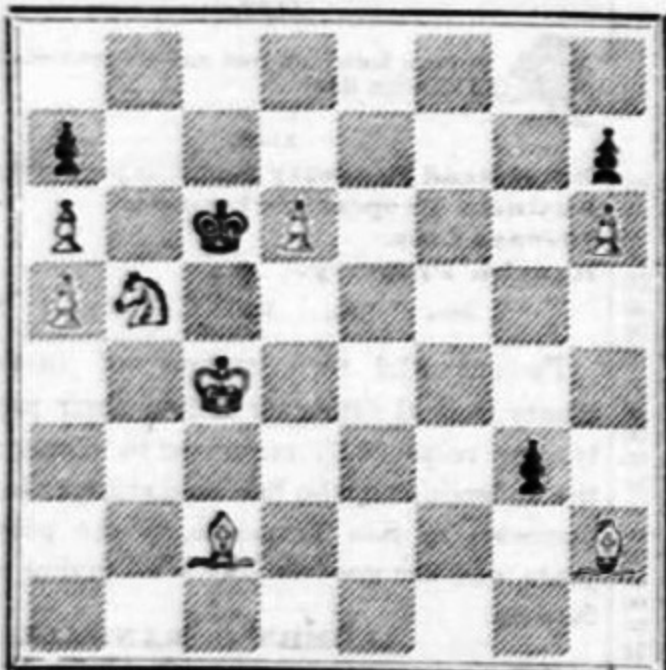
EDITED BY A COMMITTEE OF THE COSMOPOLITAN
CHESS CLUB.

* * * All communications having reference to chess, must be
addressed to "Chess Editors Alta."

Problem No. 26.

By T. J. G., of San Francisco.

BLACK.



WHITE.

White to move, and Mate in three moves.

To Correspondents.

J. P. M., San Jose.—Your Solution of Problem No. 24 is correct.

A. A. M.—You can become a member of the Cosmopolitan Chess Club, by having your name proposed by one of the members. Should you not be acquainted with any, drop a line to the "Cosmopolitan Chess Club, Box No. 526," expressing your wish to join, when your admission will be balloted for at the first ensuing meeting. The terms are: Initiation fee, \$3; and monthly dues of \$1. Your Solutions to Problem No. 24 are correct.

O. B.—Your inquiries may be answered in a few words. There is no law in chess which requires you to announce check to the queen, nor among first class players is it usually customary to do so. It is altogether a matter of individual courtesy, and may be practiced, or not, at the option of the player.

Solutions of Problem No. 24.

By C. B., of Benicia.

WHITE.

BLACK.

1...B to K 6 P to Q Kt 8 queens—ch
2...Kt to Q Kt 2—disch K x Kt
3...Kt to Q 3—mate

1...B to K 6 K to Q Kt 8
2...Kt to Q 2 or Q R 3—ch K to Q B 8
3...Kt to Q Kt 3—mate

1...B to K 6 P to Q B 8 queens
2...Kt to Q 2, or Q R 3— Q to Q B 5—ch
[dis ch]
3...B x Q—mate

1...B to K 6 Kt to K 6, or Q B 6
2...Kt to Q 2, or Q R 3— Kt to Q 4—ch, or Q B 5
[dis ch]
3...B x Kt—mate

In the third Solution P might become Rook or Kt and still prolong to three moves.

GAME.

(From the New York Clipper.)

A fine sparkling battle between W. J. A. Fuller and J. Thompson, Esq's, both of New York.

(ALLGAIER GAMBIT.)

Attack—Fuller.

Defence—Thompson.

1...P to K 4	P to K 4
2...P to K B 4	K P x P
3...K Kt to B 3	P to K Kt 4
4...P to K R 4	P to K Kt 5
5...K Kt to K 5	P to K R 4
6...K B to B 4	K Kt to R 3
7...P to Q 4	P to Q 3
8...K Kt to Q 3	P to K B 6 (a)
9...Kt P x P	Kt P x P (b)
10...Q x B 3d P	Q B to Kt 5
11...Q to K B 2	Q to K 2
12...Q Kt to B 3	P to Q B 3
13...Q B to Kt 5	Q to her B 2
14...K to Q 2 (c)	K R to his 2
15...Q R to K B sq	Q Kt to Q 2
16...K to Q B sq.	Q Kt to his 3
17...B to Q Kt 3	Q B to K 3
18...P to Q 5	B to K Kt 5
19...P to K 5 (d)	K to Q 2
20...K P x P	Q x Q 2d P
21...Q B x Kt	Q x Q B—ch
22...K to Kt sq	Q R to K sq
23...Q P x P—ch	Kt P x P
24...B x K B P	Q R to K 6
25...B to K Kt 5	K R to K 2 (e)

26... Q x K B	Q R to K 8—ch
27... K Kt x R	K R x Kt—ch
28... Q R x R	Q x Q (f)
29... B to Q Kt 3	P to Q R 4
30... K R to K B sq	Q to her Kt 5
31... P to Q R 3	Q to her 5 (g)
32... Q R to Q sq	Q B x R
33... K R x B	Q x K R
34... Q Kt x Q	K to Q 3
35... Kt to K 3	K to his 4
36... Kt to Q B 4—ch	

And Mr. Thompson is beaten.

NOTES.

(a) The symmetrical regularity of this opening on both sides makes it a valuable as well as entertaining lesson to all students really desirous of improving.

(b) The following variation we translate from the German "Handbuch."

9...	K B to K 2
10... Q B to Kt 5	K B x B
11... R P x B	Q x Kt 2d P
12... Q to her 2	Q x Q—ch
13... Q Kt x Q	K Kt home
14... K Kt to B 4	P to K R 5
15... B P x P	B x Kt 2d P
16... K to B 2, and the game is even.	

(c) Prepared now to open with *all* his batteries, even to the King himself.

(d) The terse directness of purpose evinced by all this is truly admirable.

(e) Heavy artillery in full and formidable activity; but his light troops are badly cut up.

(f) Got her—but pays more than she's worth.

(g) This looks like a miscalculation; at any rate the Attack snatches the opportunity on the very instant to make this fine game a harmonious whole, by giving it a denouement in keeping with its other parts.

The Chess Tournament of the Cosmopolitan Club.

The Chess Tournament of the Cosmopolitan Club commenced on Monday last, at their rooms in Montgomery Block. The entries are as follows :

FIRST CLASS.

First Division.—Messrs. Shaw, Siëring, Sutro, Justh, Roberts, Schleiden, Jones.

Second Division.—Messrs. Chater, Blumenthal, Monroe, Wheaton, Meyer, Scott, Kinzel, Farwell, J. Levinson, L. Levinson, Struver, Vertimer, Berolzheimer, Mizner, Byrne, Baker, Ellis, Moore.

SECOND CLASS.

First Division.—Messrs. Kemp, Johns, Pincus, Bowman, Nourse, Rose, Tyler, Lupton, Swasey, Rosenbaum, Dewey.

Second Division.—Messrs. Barrett, Whitney, Bartlett, Dow, Carlton, Hill, Hudson, Ladd, Lupton, Labatt.

The scheme of the Tournament is as follows : The gentlemen of the several classes play each a single game with all those in their respective divisions—the person scoring the highest number of of won games being the victor in his division. Thus far, the score stands as follows :

First Class.

SECOND DIVISION.

Kinzel vs. Farwell	Kinzel won.
Blumenthal vs. Chater.....	Chater won.
Blumenthal vs. Baker.....	Blumenthal won.
Scott vs. Kinzel	Scott won.
Baker vs. Kinzel.....	Kinzel won.
Monroe vs. Kinzel.....	Kinzel won.
Chater vs. Baker.....	Chater won.
Chater vs. Farwell.....	Farwell won.
Monroe vs. Mizner.....	Mizner won.
Blumenthal vs. Mizner.....	Mizner won.
Chater vs. Monroe.....	Chater won.
Kinzel vs. Struver.....	Kinzel won.
Scott vs. Blumenthal.....	Scott won.
Chater vs. Levinson.....	Levinson won.
Ellis vs. Byrne.....	Byrne won.

Second Class.

FIRST DIVISION.

Bowman vs. Dawson.....	Dawson won.
Tyler vs. Swasey.....	Tyler won.
Bowman vs. Swasey.....	Bowman won.
Tyler vs. Dawson.....	Tyler won.
Johns (W. M.) vs. Tyler.....	Johns won.

SECOND DIVISION.

Barrett vs. Whitney.....	Whitney won.
Hill vs. Whitney.....	Whitney won.
Ladd vs. Whitney.....	Whitney won.
Barrett vs. Ladd.....	Ladd won.

We shall commence the publication, next week, of several tournament games in the respective divisions.

CHESS CLUB IN SACRAMENTO.—There is a Chess Club about being organized in Sacramento. At a preliminary meeting held on Tuesday evening, 3d inst., a resolution was adopted, to send to this city, and procure a copy of the by-laws of the Cosmopolitan Club. All members of the Sacramento Library Association are recognized as members of the club.