

CHess INC., OF SAN DIEGO
SAN DIEGO COUNTY CHESS LEAGUE

"Chess Unlimited"

1503 Garnet Street
San Diego 9, Calif., U. S. A.

December 30, 1957

ATTENTION CHESS FANS!

THE TIME: Sunday, January 12th - 2 p.m. to 7 p.m.

THE PLACE: 1176 Loring Street, Pacific Beach, Corner of Loring and Everts, nine blocks north of Garnet Street, one west of Fanueil.

THE OCCASION: First Chess Promotion of Chess Inc., of San Diego.

THE CONTESTANTS: GRANDMASTER Bent Larsen of Denmark vs. INTERNATIONAL CHESS MASTER Paul Benko, of Hungary.

THE ON THE SPOT ANALYST: GRANDMASTER Larry Evans, former U.S. CHAMPION, twice former U.S. OPEN CHAMPION.

THE EXHIBITION GAME: At 2:30 will pit the contestants in a game of 30-30 chess, that is, each man must make thirty moves in thirty minutes. This speed is faster than regular tournament play so that there will be time for other activities. To guarantee a lively game, Chess Inc. of San Diego, will prescribe the opening moves for the first half dozen turns, and the players will draw for colors.

THE ANALYST: Will make critical comments on the progress of the game in a separate area, and he will give his version of the chances in the original position before play commences.

THE LATER ACTIVITIES: Will include time handicap games between amateurs and professionals, the professionals giving odds of five minutes to ten minutes per game. An amateur winning a game will receive an autographed copy of TROPHY CHESS, by Mr. Evans. An amateur drawing will be able to play another game at no charge.

THE FEES: Will be as follows: \$1.00 entry fee per chess player; 50 cents per fast handicap game. Wives and children admitted free.

THE FREE REFRESHMENTS: Coffee and pastry.

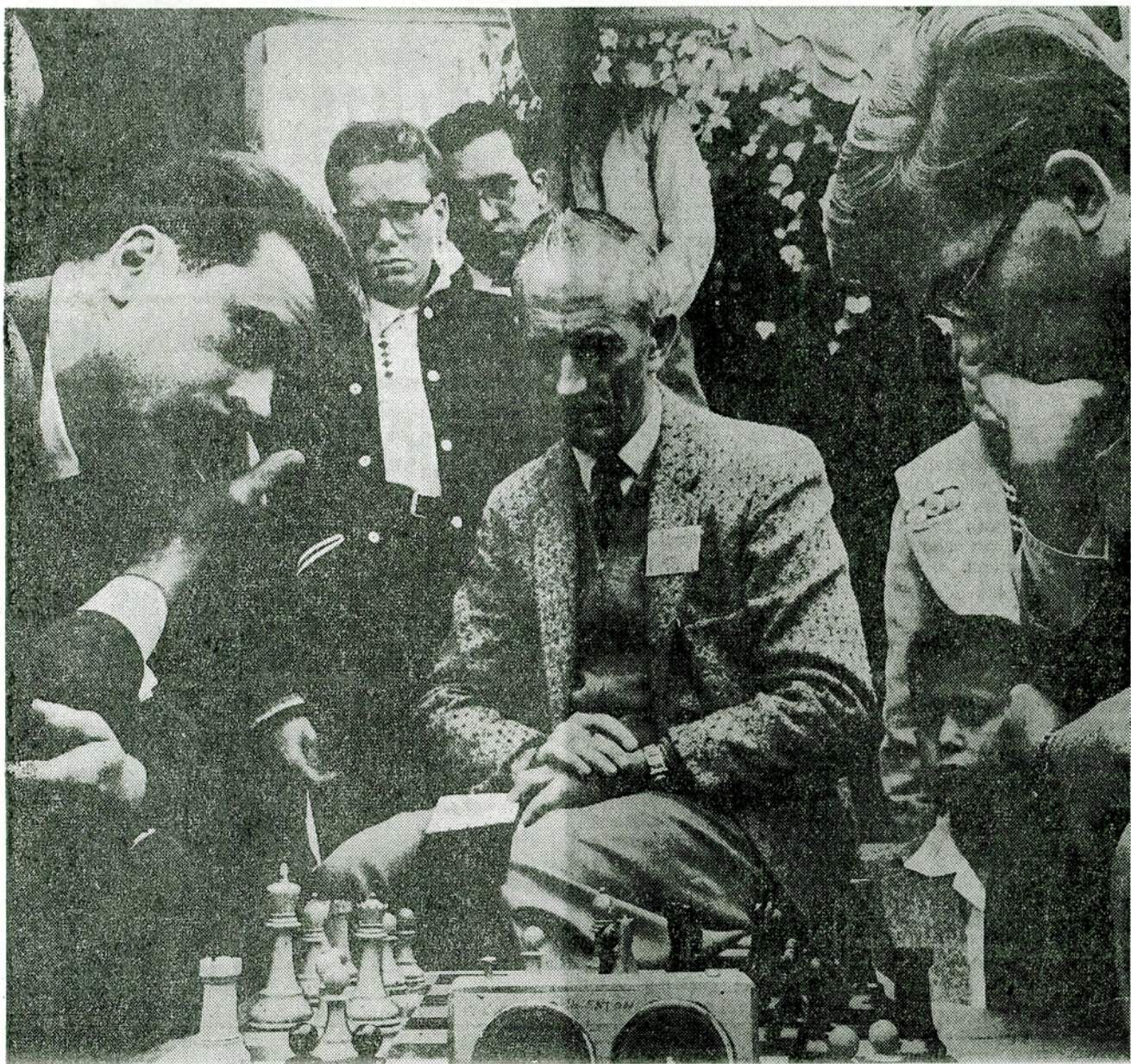
THE PHOTOGRAPHER: Lawrence Schiller, brilliant young local camera artist, will be available and taking pictures almost continuously. Special shots upon request (without obligation). Pictures may be purchased at \$1.50 each after we receive proofs.

THE COMPANY: Chess Inc., of California, is an organization devoted to promoting the sale and distribution of chess merchandise and to promoting regular chess activity among all classes of players and among all people. See the attached Articles of Incorporation.

THE DIRECTORS: After adoption of By-Laws the directors will include: Mr. Dudley H. Hosea, Chairman of the Board; Mr. David Folsom, Attorney at Law; Mr. George P. Wilson, Jr., President, Humphrey Castings, Inc.; Mr. H. Lincoln Chadbourne, Technical Editor, N.E.L.; Mr. Barney Reed, Art Director, N.E.L.; Mr. Lemuel P. Dean, Aircraft Plastics Research Engineer; Mr. Charles Holliday, Attorney at Law; Mr. Gilbert V.D. Jones, Manager, First National Bank, 11th and Market St. Branch; John Alexander, Executive Vice President and Sales Manager, Chess Inc., of San Diego.

Prominent figures in the field of Chess have been and will be invited to participate on the Board.

THE ADVERTISING CONSULTANT: Mr. John Zane, imaginative newcomer to the field.



A THOUGHT IN TIME—Decisions weigh heavily on contestants Paul Benko, left, and Bent Larsen,

right, during an important moment in their chess match. Scorer is W. C. Thornton, Clairemont

EXHIBITION

Chess Masters Battle to Draw

Two chess masters yesterday battled to a draw after more than an hour's struggle.

More than 100 persons witnessed the exhibition at 1176 Loring St., Pacific Beach. It was sponsored by Chess, Inc., a newly formed San Diego group.

30-30 Game Played

The match was between a grand master, Bent Larsen, 22, of Denmark, and an international master, Paul Benko, 27, of Hungary.

Grand Masters are rated one step above international masters.

This was a 30-30 game. Each player was supposed to

make 30 moves in 30 minutes.

Double Clock Used

To keep track of this, a chess clock was placed beside the board.

This is a double clock with a button on each side.

One player makes a move and presses a button. This stops his clock and starts his opponent's.

Slight Advantage Held

Larsen — held a slight advantage throughout most of the game, but Benko, attacking energetically, evened it up about the 25th move.

Each player had a king and four pawns at the end of the 30 moves, and agreed to a draw soon after.

CHESSE MATCH

new

Chess is nothing like a giveaway game of checkers.

As a matter of fact, it's not even like regular checkers.

This was painfully obvious yesterday to a checker-loving reporter sent to cover a chess match at 1176 Loring St., Pacific Beach.

The match was sponsored by Chess Inc., a newly formed San Diego group which hopes to become wealthy by manufacturing ties, pajamas, cuff links, and shirts with chess men on them. They also plan to manufacture chess men--but no checkers.

All this gives me an idea for a new company.

The match was between a Grand Master, Bent Larsen of Denmark, and an International Master, Paul Benko of Hungary.

Grand Masters are better than International Masters, but they decided to play anyway.

This was a 30-30 game, each player was supposed to make 30 moves in 30 minutes. To keep track of this, a chess clock was placed beside the board. This is a double clock with a button on each side. One player makes a move and presses a button. This stops his clock and starts his opponent's.

If this irritates his opponent, then he can make a move, press a button, and stop and start in his turn. This looked like more fun than chess.

To guarantee a lively game, the first half dozen moves already were made before the game started. This pleased most of the 100 chess fans assembled, irritated both the players, and confused the checker players. I never heard of such a thing.

The match started. Someone said White plays King's Bishop's Pawn.

This probably was so.

Larsen, 22, was a slightly built, studious-appearing youth who wore glasses. He didn't move, he swooped. His hand would dart out, whip a piece into place, snatch up his opponent's piece, and push the clock button in one fluid motion.

Benko, 27, was a slightly built, studious-appearing youth who didn't wear glasses. He never took his eyes off the board, whether it was his turn to ponder or Larsen's.

I thought they didn't trust each other, but someone said they were figuring out the game 10 moves in advance.

Expressionless, coldly calculating, the two were completely oblivious to the hushed spectators. They were locked in a world of single combat, deploying their armies of black and white as though kingdoms would rise or fall on each decision.

The battles, the exchanges came in a fierce flurry of activity, then were followed by a long series of bloodless skirmishes as each side strove for a strategic advantage.

In another part of the yard, Larry Evans, former U.S. national champion, was analyzing the game for spectators on a large wallboard which reproduced the action.

I didn't understand him either.

The 30 moves ended. Each king was still leading an army of four pawns.

"This is a theoretical draw," Evans said.

I couldn't see this. No checker game is over for me until my last man is gone.

The two chess players couldn't see it either. They decided to go on, agreeing to make their next 40 moves in two hours.

I went home. I had a parcheesi date with my son.

CHESS INC., OF SAN DIEGO COMMENTS

ON THE SAN DIEGO TRIBUNE CHESS STORY

We take exception to only two statements in Mr. Alden Godfrey's amusing article attached hereto. First, Chess Inc. prescribed five moves for each player, not six. We had planned to use the first six moves of the San Diego variation of Albin's Counter Gambit but after Sven Almgren demolished it in a secret session on the eve of the match we switched to the San Diego variation of the Sicilian. "Terrible," said Benko, who immediately left the "book" by playing P-Q4 instead of P-Q3, a necessary move in the San Diego system. ("Not a bad line," said Larsen, "It's been analyzed in Denmark." -- Here is our second exception to Mr. Godfrey.)

Mr. Godfrey left too early to witness the giveaway chess which followed the main attraction. This he might have understood. The three masters met all comers in short time handicap games and Sven Almgren, former California Open Chess Champion and U.S. Master, met the standees in 10 second chess. The slaughter was terrible. Bob Brieger of San Diego, after absorbing countless defeats, to the audible pleasure of his numerous admirers, finally succeeded in drawing one game with Larry Evans and winning one from Benko. Sven proved so mystifying that he was reduced to giving pawn and one move. Only Roy English of Pacific Beach succeeded in lowering his colors (on about the fifth try). Ten year old Jimmy Alexander, gallantly playing Albin Counter Gambits (without disclosing the company secrets) finally "won" one from ever-fresh Bent Larsen, whose flag fell when he tried to complete two games in two minutes. All received autographed copies of Larry's book "Trophy Chess".

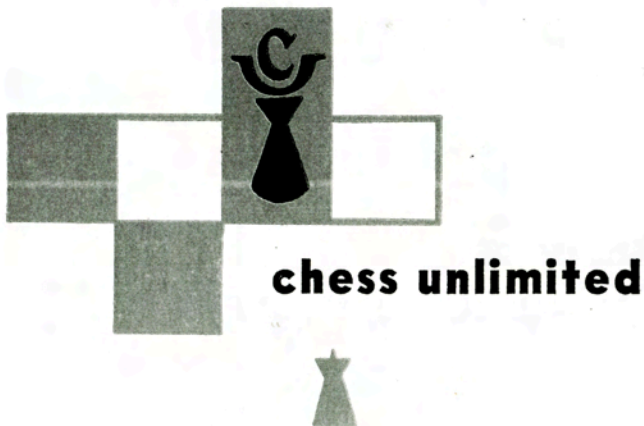
Mr. Alfred P. Coles III, of Encinitas, indefatigably absorbed beatings from about four p.m. until at least nine o'clock, and he received a book in the hope that it would enable him to fare better next time.

The party broke up at about eleven, a good time was had by all, and we expect a better turnout for Al Horowitz on February 3rd and for Imre Konig in March

T H E G A M E

SICILIAN DEFENSE
SAN DIEGO VARIATION

1	P-K4	P-QB4	13	PXN	BXB	25	K-K2	K-B2
2	N-KB3	P-Q3	14	QXB	N-N5	26	P-QN3	K-K3
3	B-B4 !?	N-QB3	15	B-Q4	P-B3	27	N-B7Ch	K-Q2
4	P-B3	P-K3	16	PXP	Q-Q3	28	N-N5	P-QR3
5	Q-K2	B-K2	17	P-KN3	BXP	29	N-Q4	N-B3
	BENKO	LARSEN	18	BXB	RXB	30	K-K3	NXN
6	P-Q4 ?!	PXP	19	N-B3	QR-KB	31	KXN	K-Q3
7	PXP	P-Q4	20	QXPCh	QXQ	32	K-B4	K-B3
8	PXP	PXP	21	NXQ	RXP	33	RQR3	P-QR3
9	B-QN5	N-B3	22	P-KR3	RXRCh	34	K-Q4	K-Q3
10	N-K5	B-Q2	23	RXR	RXRCh	35	P-QR4	K-B3
11	B-K3	O-O	24	KXR	N-K4	36	P-KN4	P-K4
12	O-O	NXN						DRAWN



chess unlimited



Thank you for expressing an interest in Chess by answering our advertisement. We hope that our program will furnish you many hours of enjoyment and productive intellectual stimulation at very reasonable rates in terms of usual costs for such pleasures. The lists of players' names which we will provide you will, of course, enable you to play on an unorganized basis, when you so desire.

Pending further action on our part, we enclose herewith a small portion of our current list, so that you will be able to start out on your own.

Very truly yours,

John Alexander
Executive Vice-President
CHESS INC., OF SAN DIEGO
1503 Garnet Street

CHESS INC., OF SAN DIEGO
Present Directors and Personnel:

Dudley H. Hosea, President and Chairman of the Board
John Alexander, Executive Vice-President and Promotion Manager
David S. Folsom, Secretary and Treasurer
Barney Reid, Art Director
H. Lincoln Chadbourne, Editor-in-Chief
Gilbert V. D. Jones, Financial Consultant
George P. Wilson, Jr., Production Consultant
Lemuel P. Dean, Production Consultant
Charles Holliday, Attorney
Hugh Young, Accountant

ARTICLES OF INCORPORATION

OF

CHESS INC., OF SAN DIEGO

ONE: The name of this corporation is:

CHESS INC., OF SAN DIEGO

TWO: The purposes for which this corporation is formed are:

(a) To initially engage in the primary business of designing, manufacturing and selling chess playing equipment and accessories, and promoting chess activities in San Diego County and throughout the world.

(b) To engage in any one or more other businesses or transactions which the Board of Directors of this corporation may from time to time authorize or approve, whether related or unrelated to the business described in (a) above, or to any other business then or theretofore done by this corporation.

(c) To exercise any and all rights and powers which a corporation may now or hereafter exercise.

(d) To transact business in the State of California, or in any other jurisdiction of the United States or elsewhere in the world.

The foregoing statement of powers shall be construed as a statement of both powers and purposes, and the purposes and powers in each clause shall, except where otherwise expressed, be in no wise limited or restricted by reference to or inference from the terms or provisions of any other clause, but shall be regarded as independent purposes and powers.

THREE: The county in the State of California where the principal office for the transaction of the business of this corporation is to be located is San Diego County.

FOUR: This corporation is authorized to issue only one class of shares of stock, the total number of such shares shall be 100,000, and all of such shares of stock are to be without par value.

FIVE: (a) The numbers of Directors of this corporation shall be four (4).

(b) The names and addresses of the persons who are appointed to act as the first Directors of this corporation are:

CHARLES D. HOLLIDAY

1212 Medico-Dental Building
San Diego 1, California

JOHN ALEXANDER

1176 Loring Street
San Diego, California

DAVID S. FOLSOM

1212 Medico-Dental Building
San Diego 1, California

DUDLEY H. HOSEA

679 Rosecrans Street
San Diego, California

IN WITNESS WHEREOF, for the purpose of forming this corporation under the laws of the State of California, the undersigned, constituting the incorporators of this corporation, including the persons named hereinabove as the first Directors, of this corporation, have executed these Articles of Incorporation this 19th day of December, 1957.

CHARLES D. HOLLIDAY

JOHN ALEXANDER

DAVID S. FOLSOM

DUDLEY H. HOSEA

STATE OF CALIFORNIA }
COUNTY OF SAN DIEGO } ss.

On this 19th day of December, 1957, before me, LOIS J. TAYLOR, a Notary Public, personally appeared CHARLES D. HOLLIDAY, JOHN ALEXANDER, DAVID S. FOLSOM and DUDLEY H. HOSEA, known to me to be the persons whose names are subscribed to the within instrument, and acknowledged that they executed the same.

(SEAL)

LOIS J. TAYLOR
Notary Public in and for said County and State