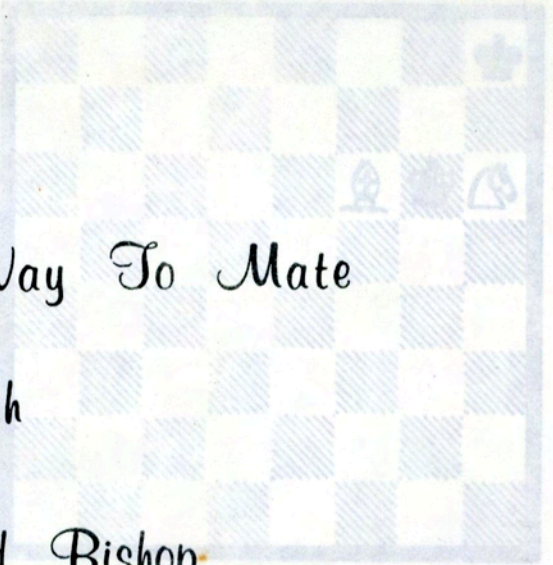



ESTAM 2308



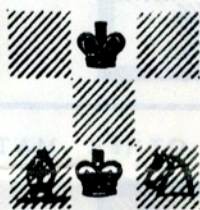
The Magic Way To Mate

with

Knight and Bishop



SIMPLIFIED THROUGH PICTURES



by



Richard Shorman

PRINTED BY

CHESS PRESS

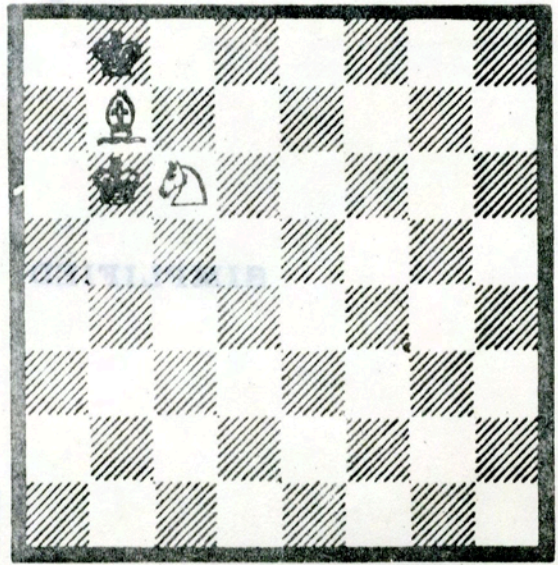
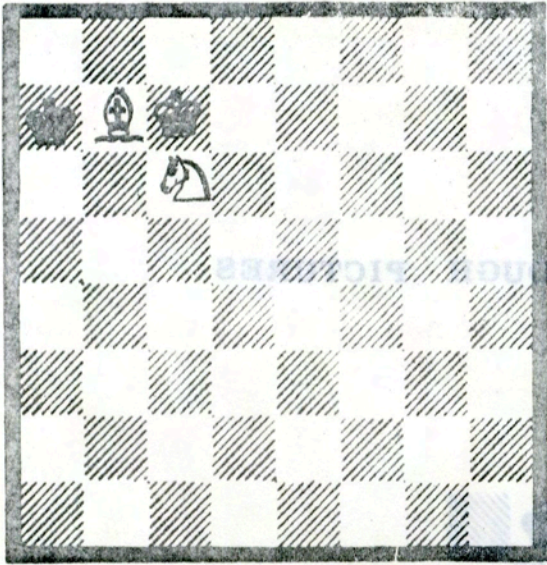
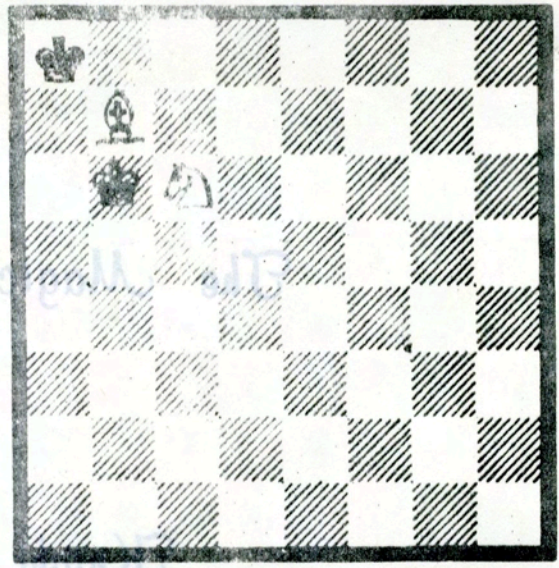
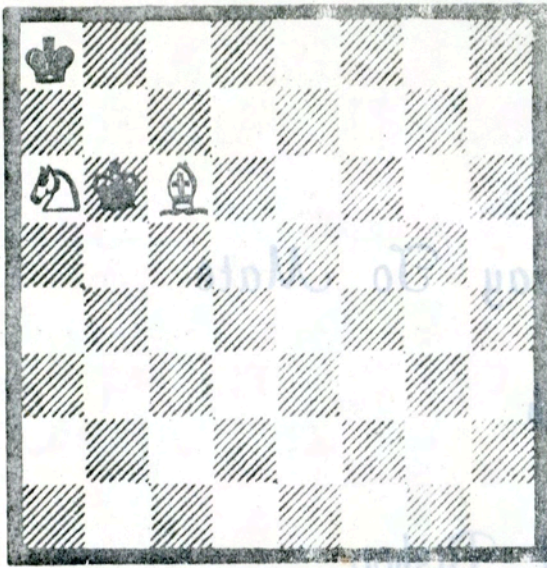
5272 Foothill Blvd
Oakland, California 94601

RAYMOND NG
LIVERMORE 443-2642

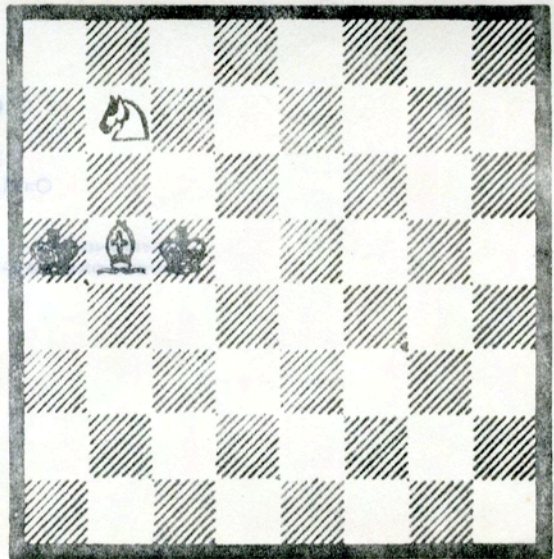
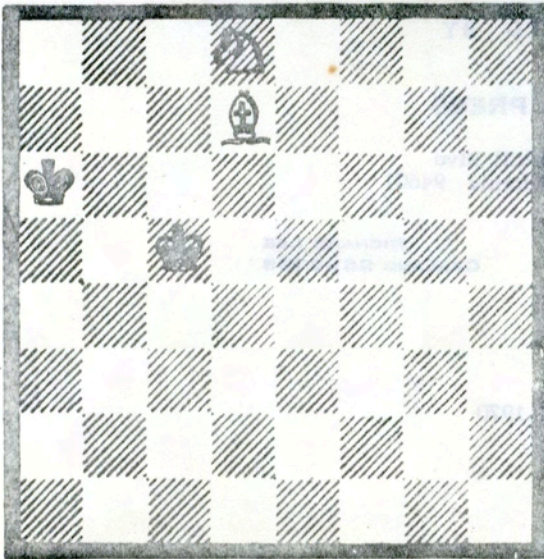
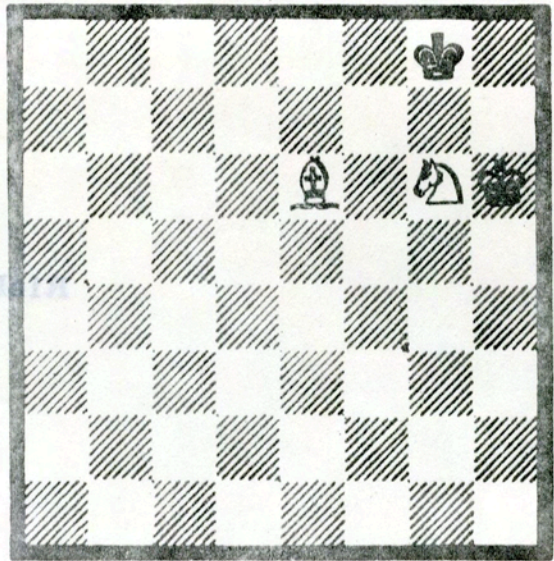
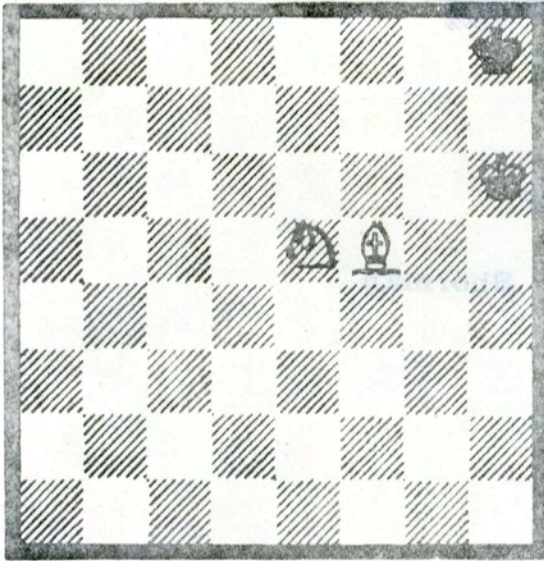
RICHARD LEE
OAKLAND 261-2058

JUNE 1970

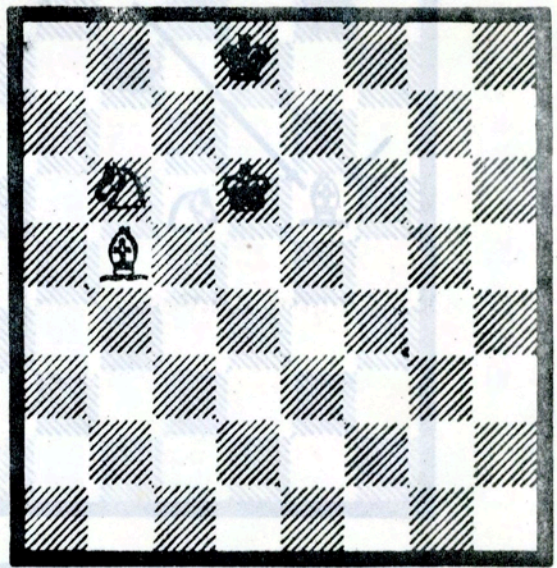
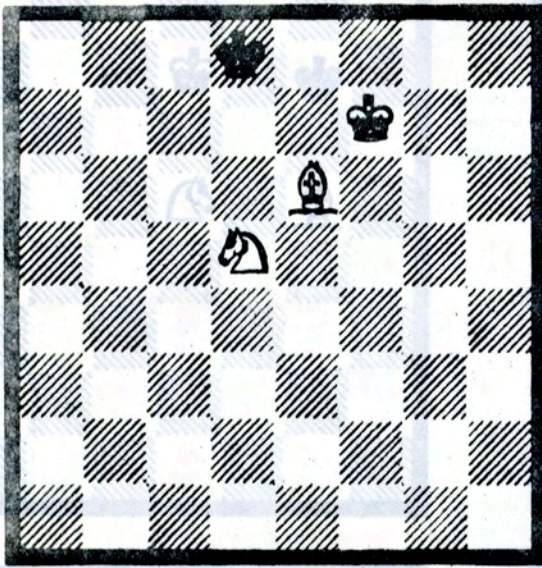
FORCED MATES



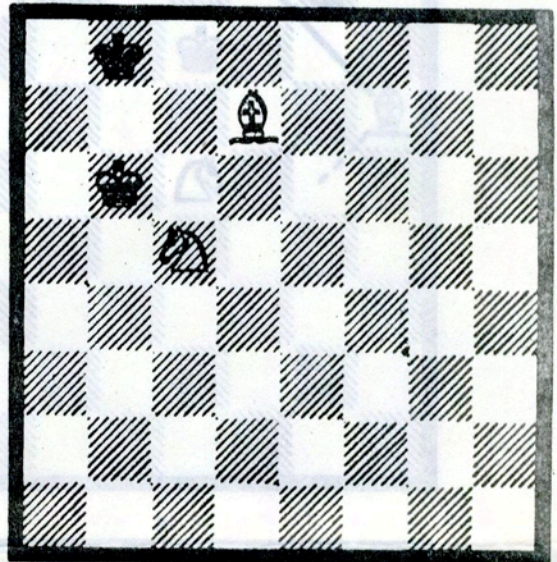
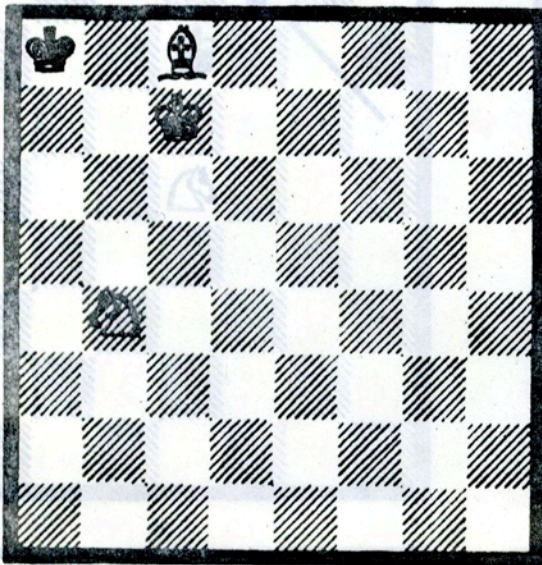
OTHER MATES



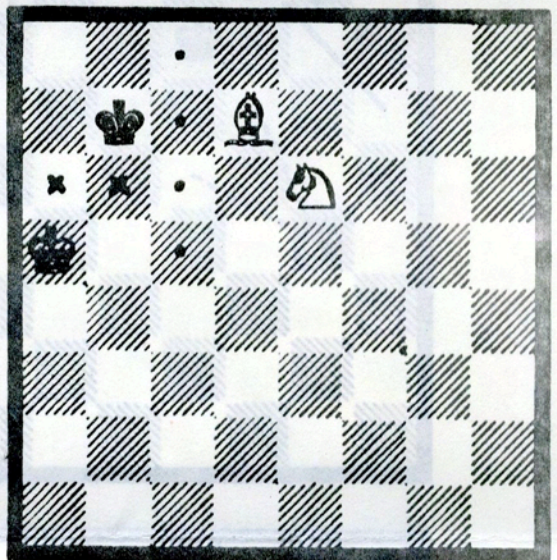
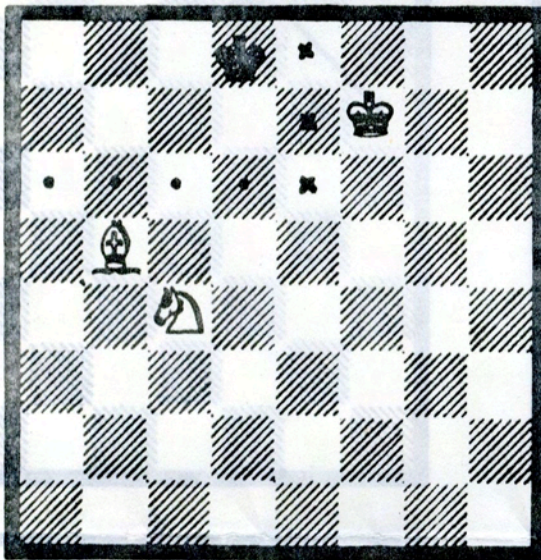
STALEMATE



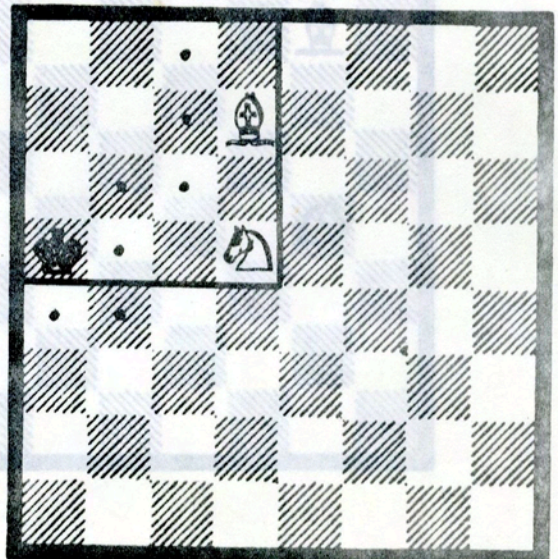
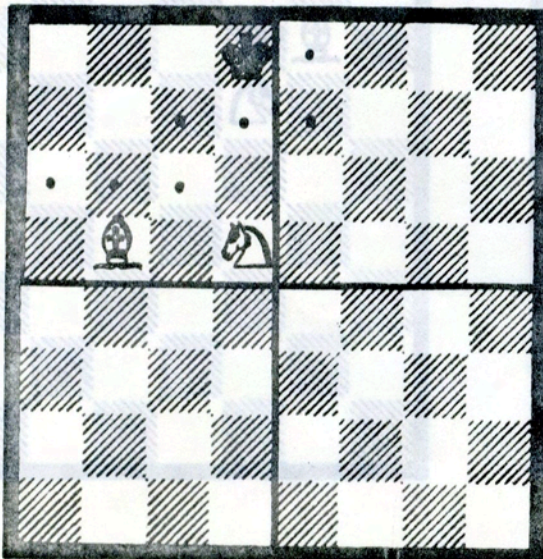
MATE IN TWO



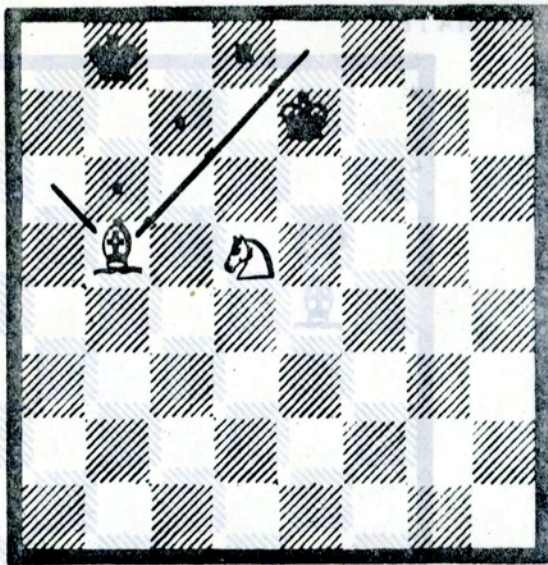
TRAPPED



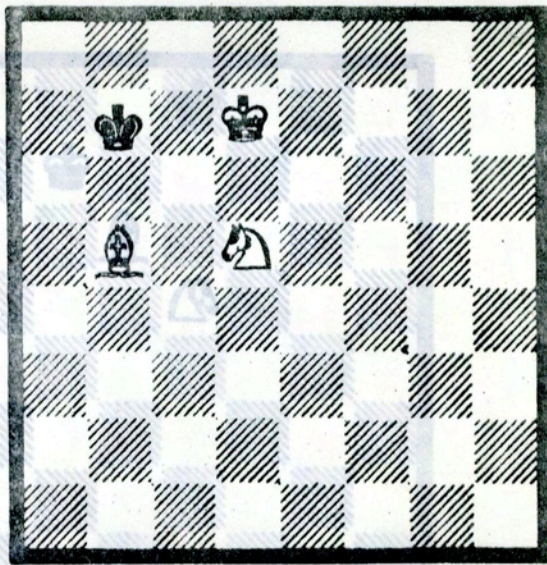
Magic Position No. 1



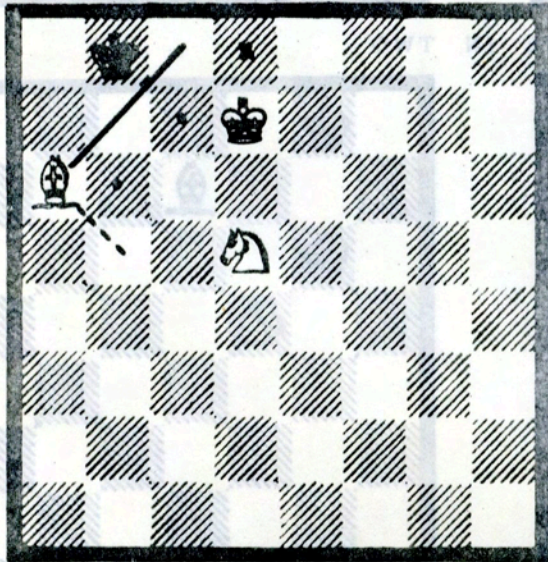
1



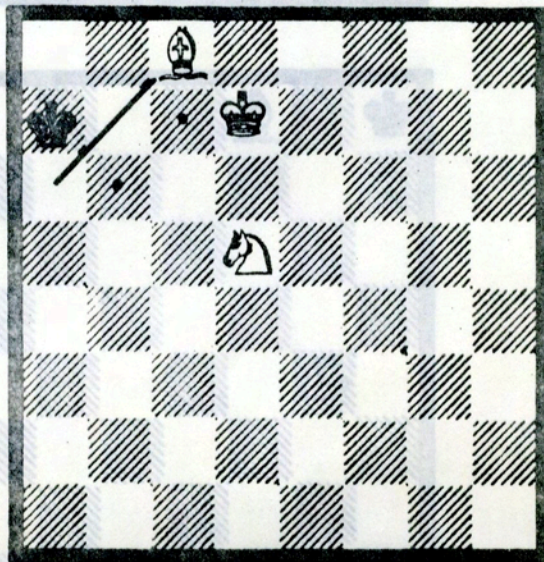
2



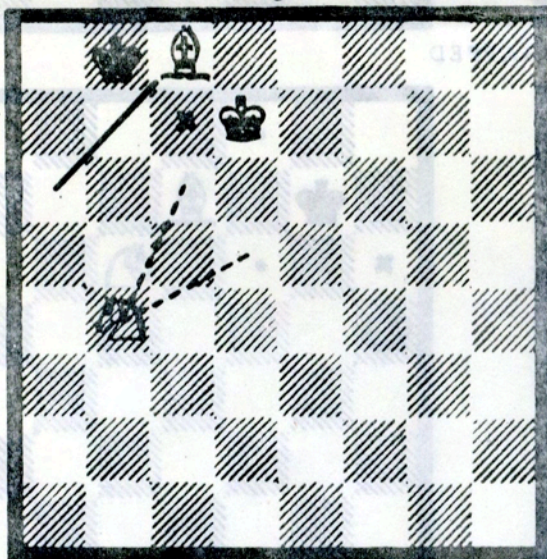
3



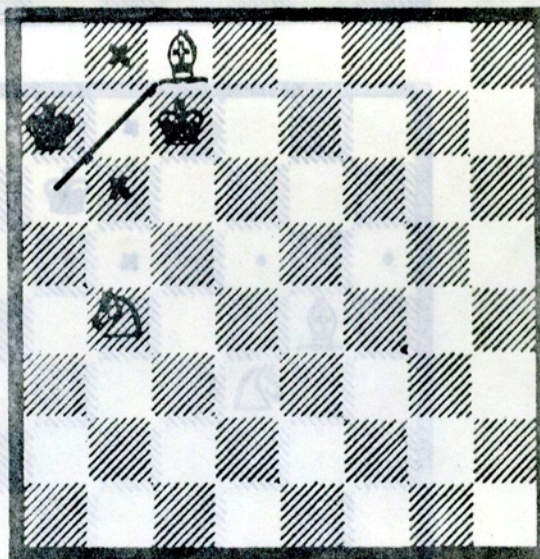
4



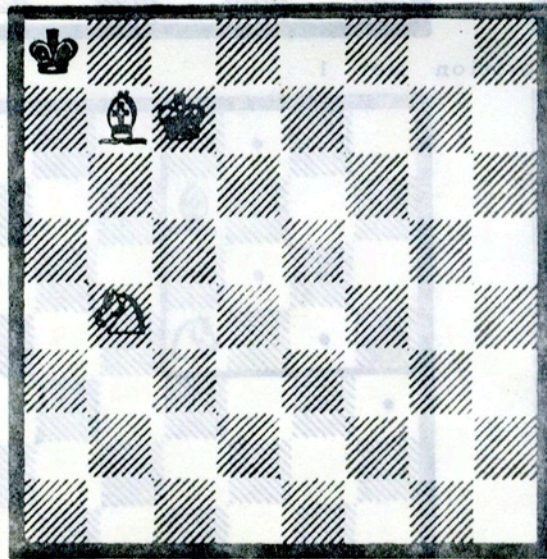
5



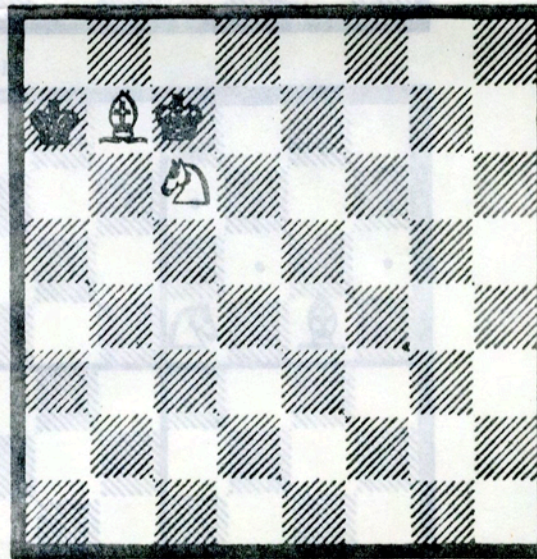
6



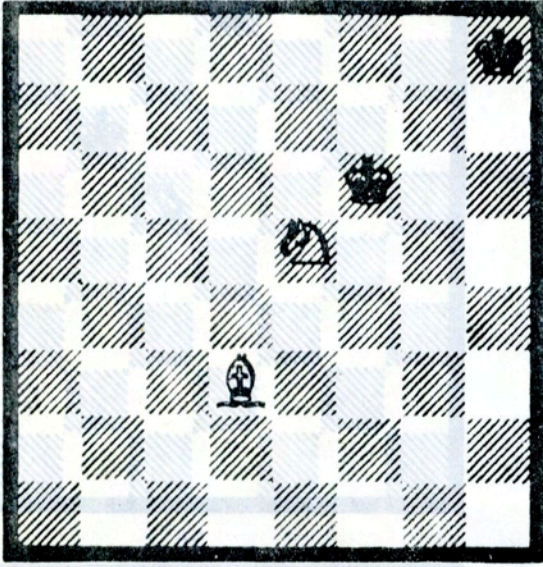
7



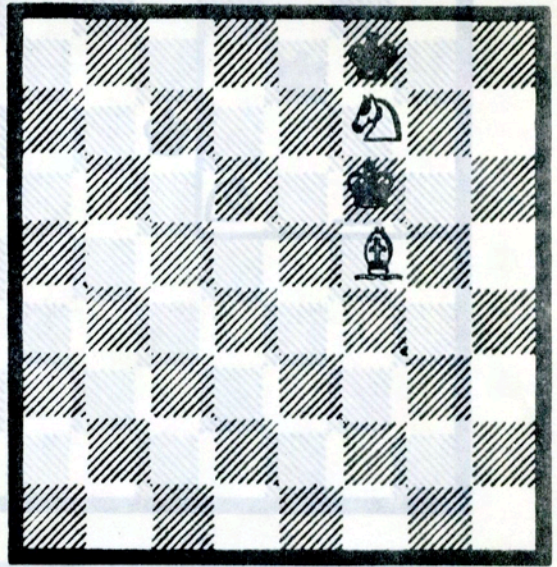
8



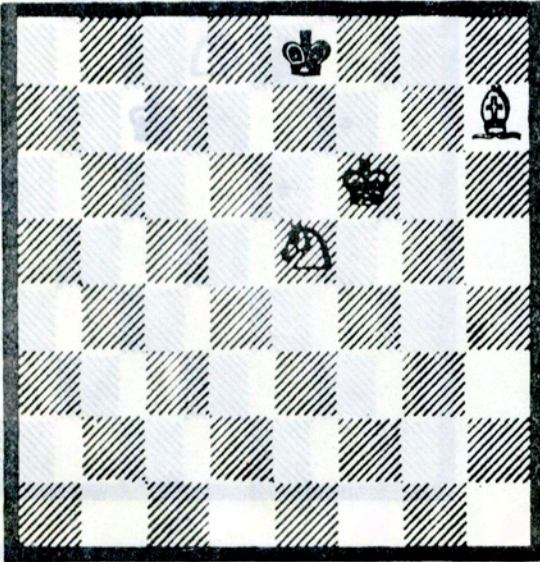
Prelude



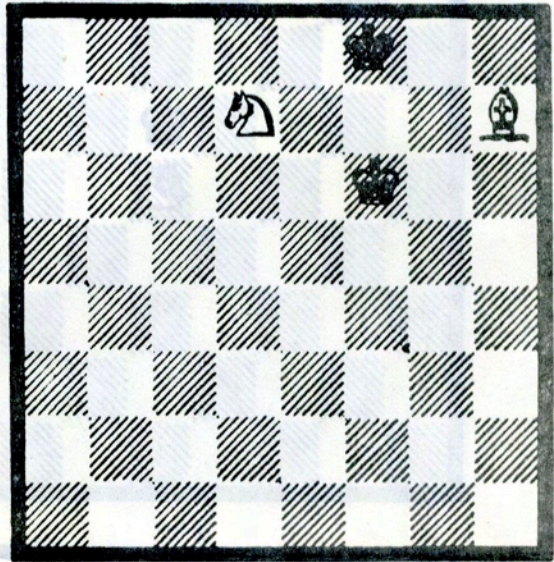
Magic Position No. 2



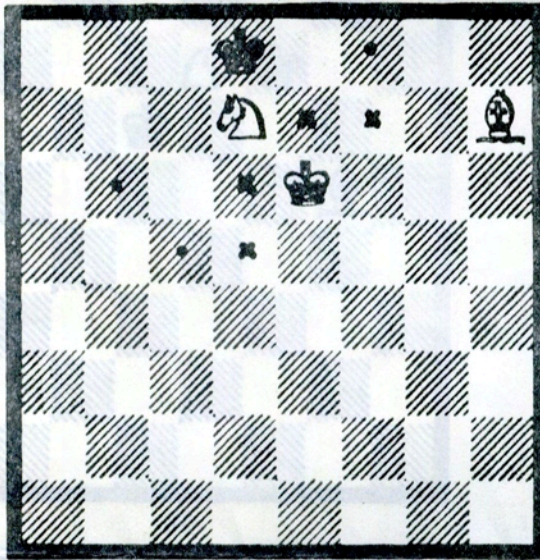
2



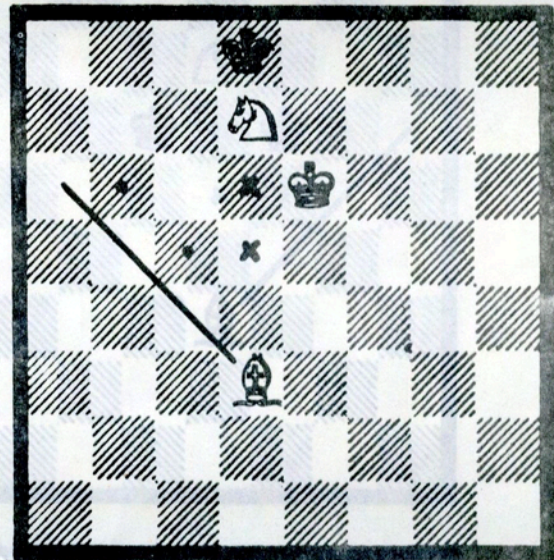
3a: Passive Defense



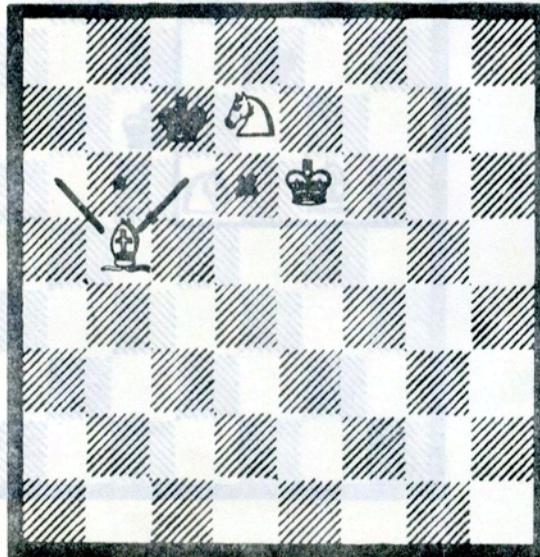
4 a



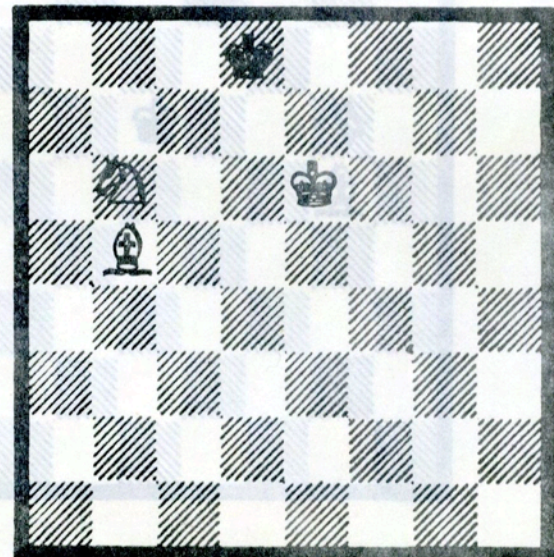
5 a



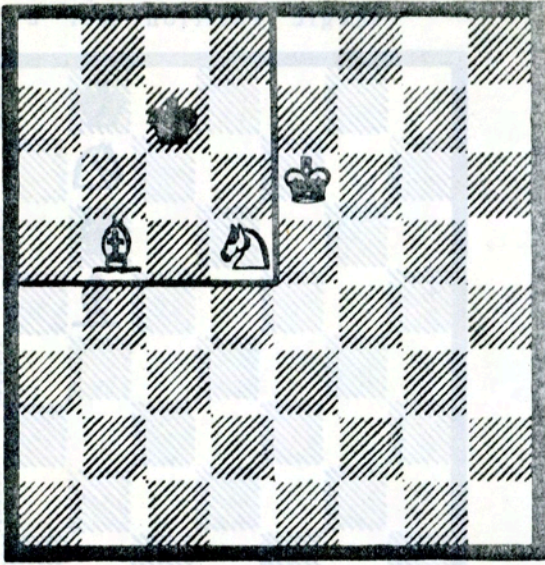
6 a



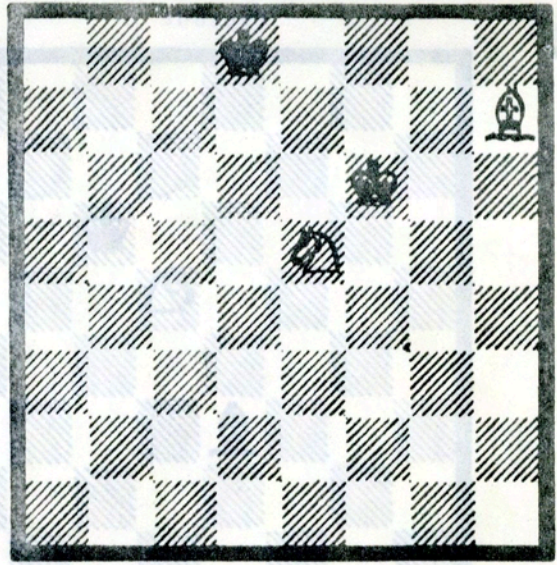
7 a



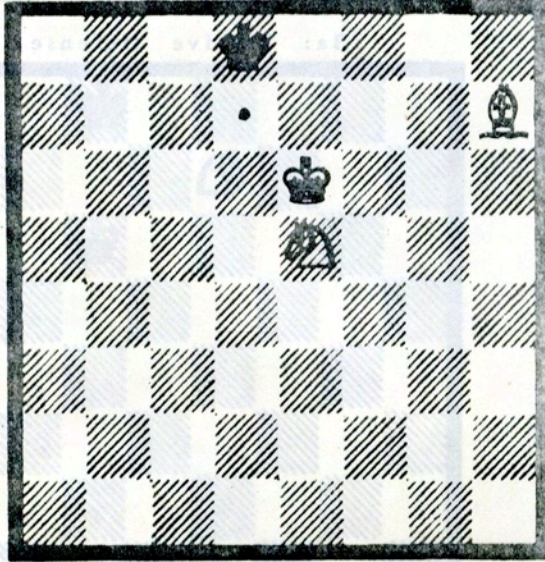
8 a



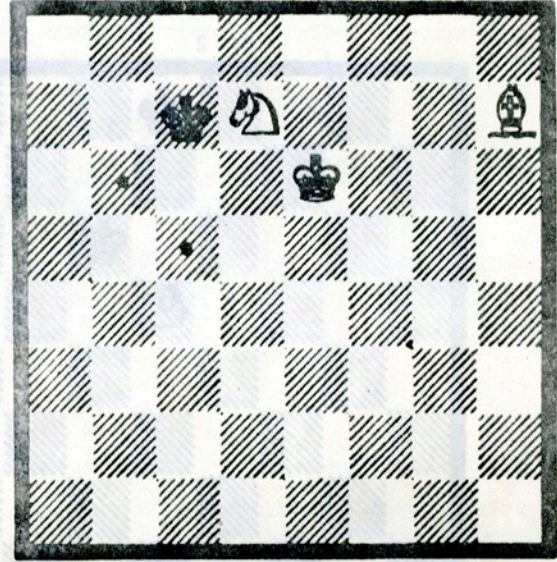
3b: Active Defense



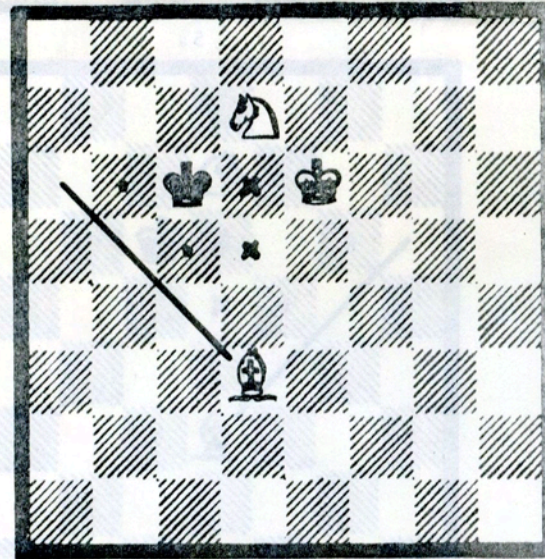
4b



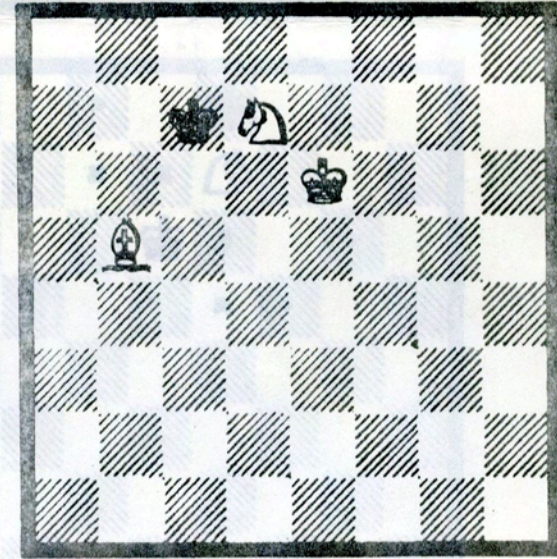
5b



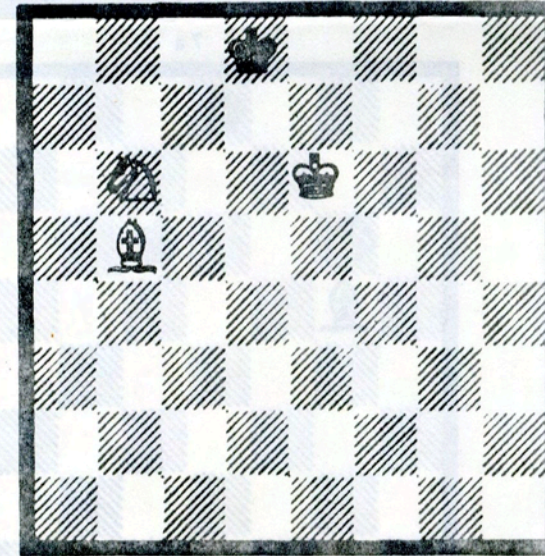
6b



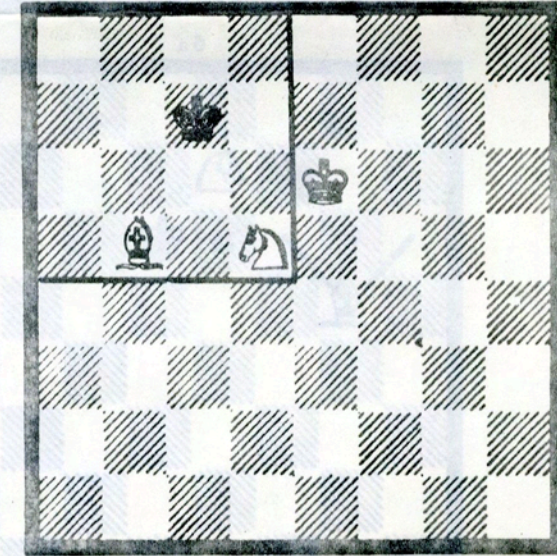
7b



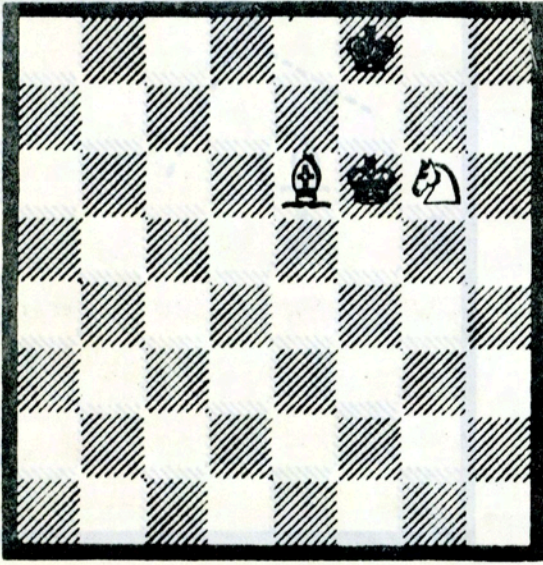
8b



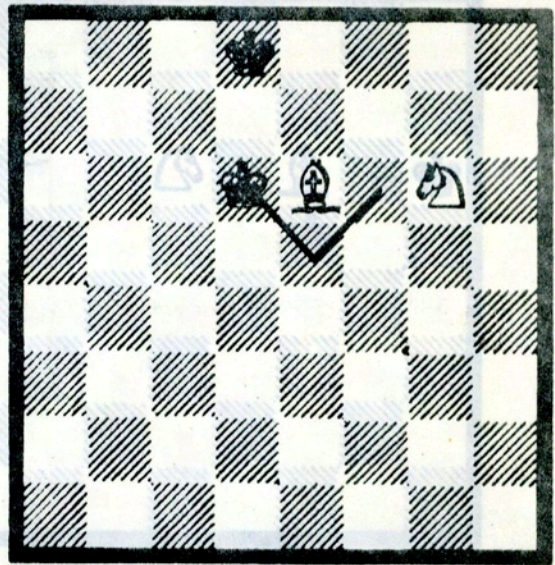
9b



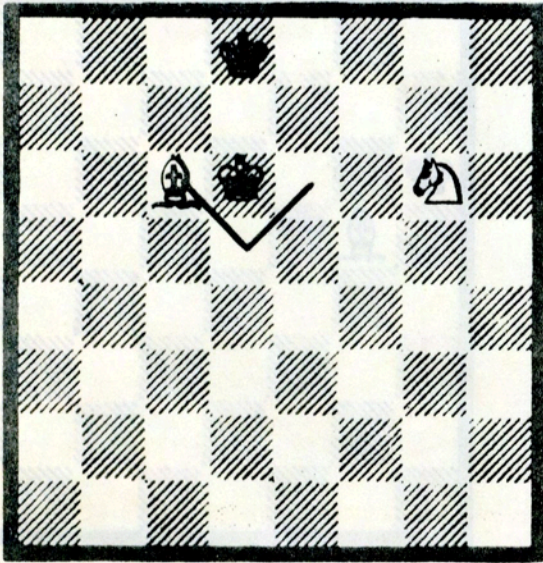
1



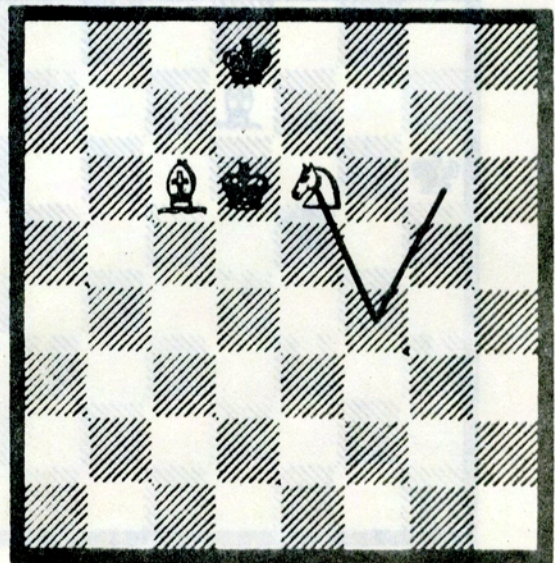
2



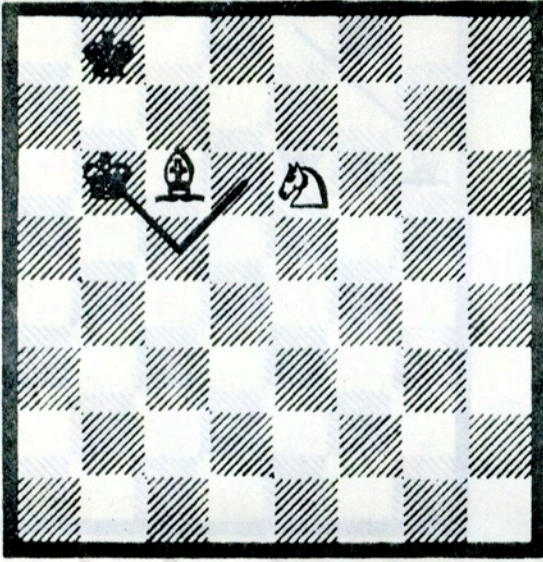
3



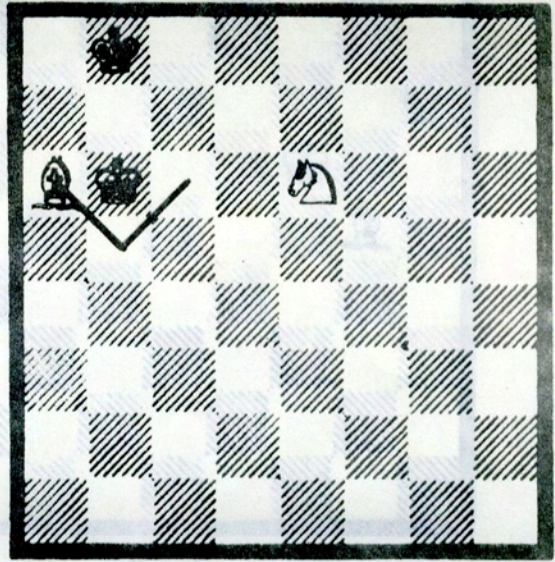
4



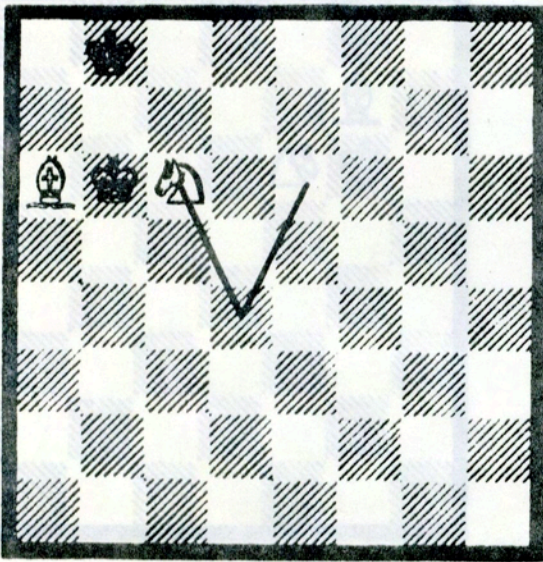
5



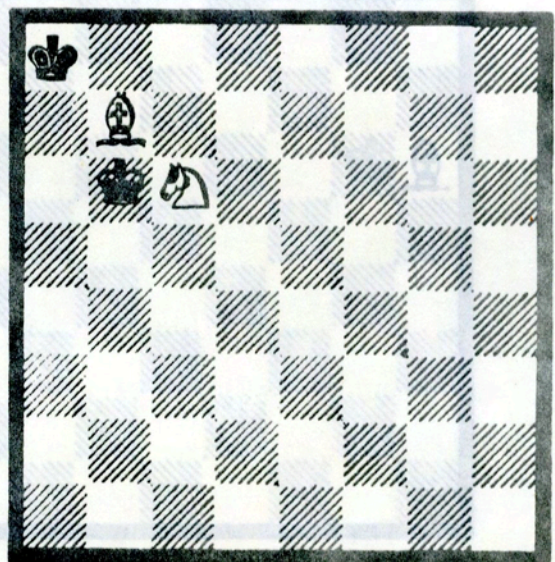
6



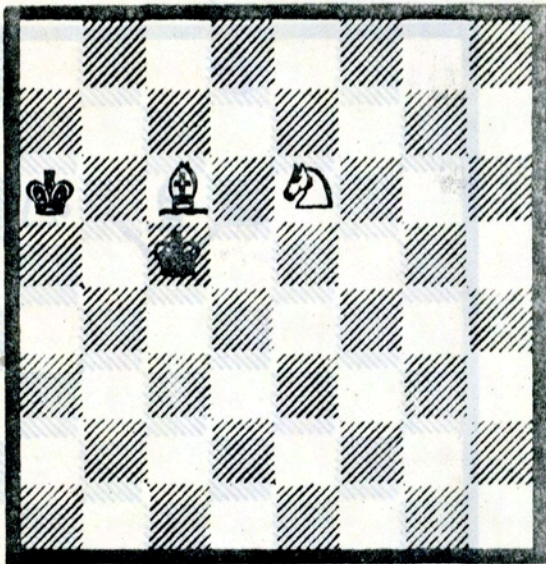
7



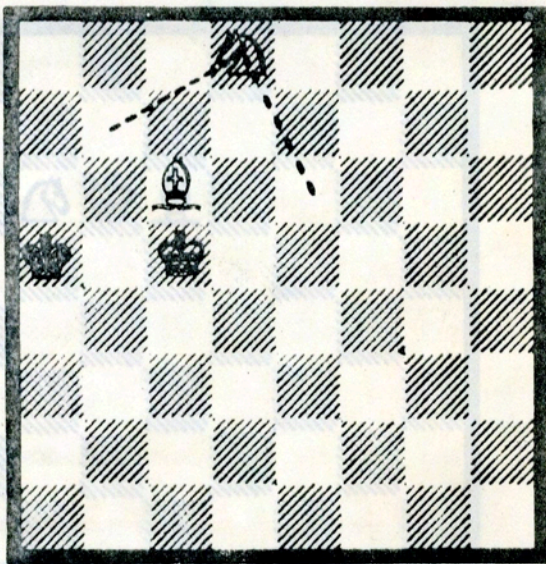
8



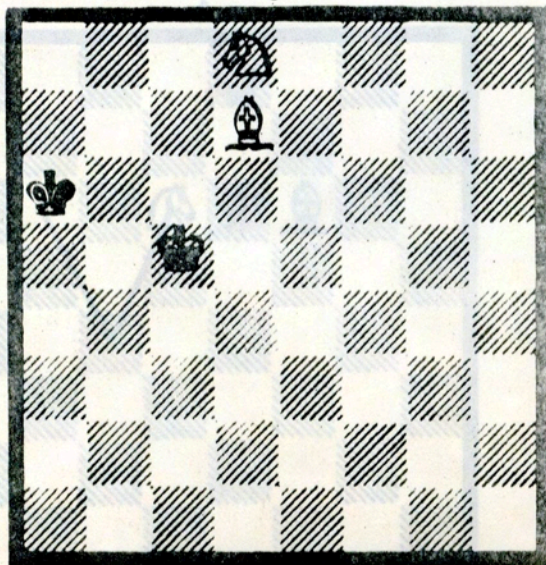
1



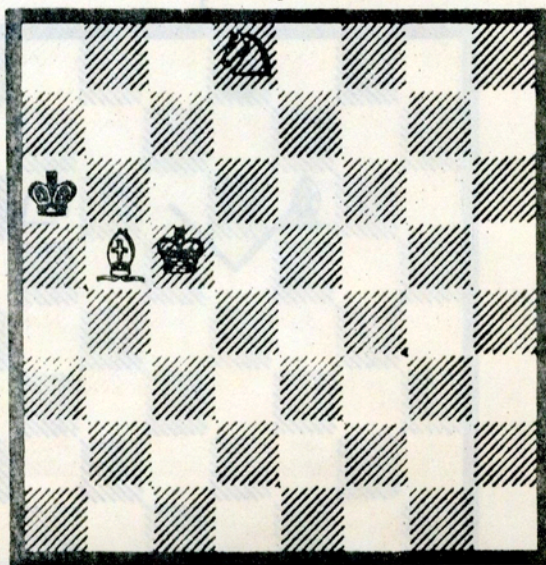
2



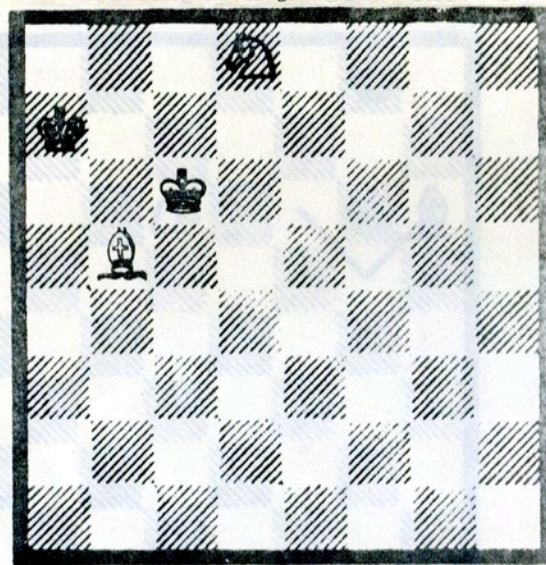
3



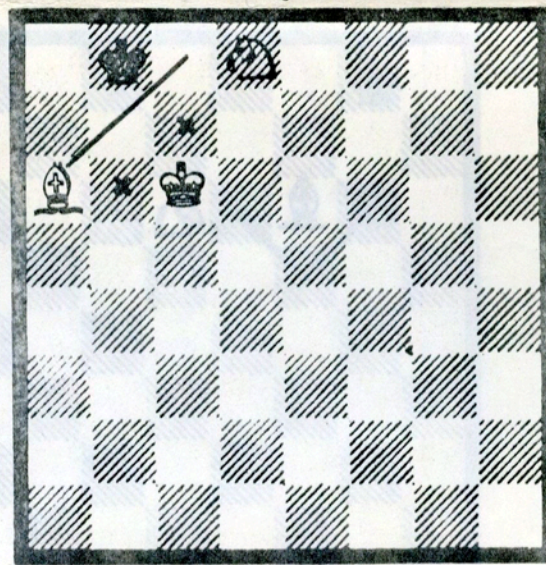
4



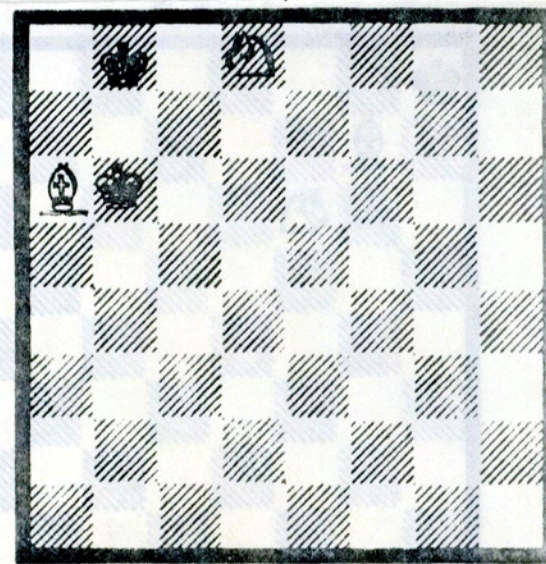
5



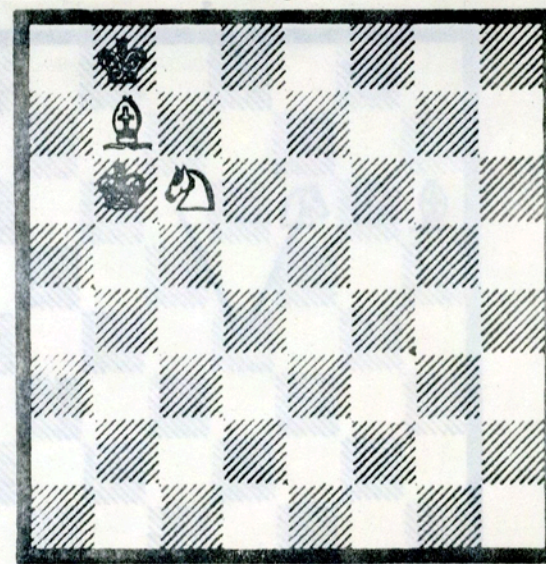
6



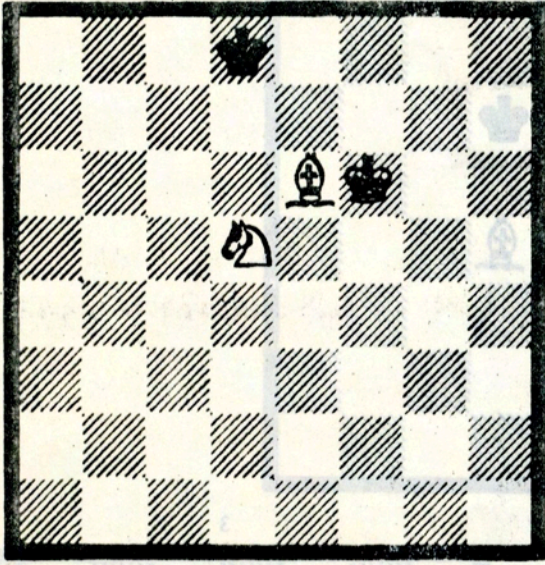
7



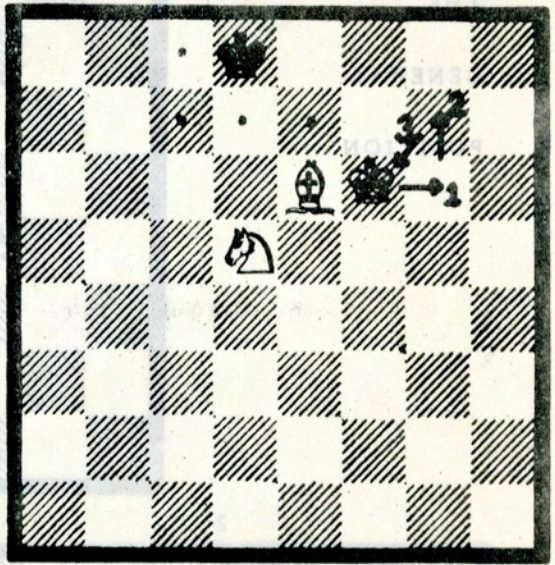
8



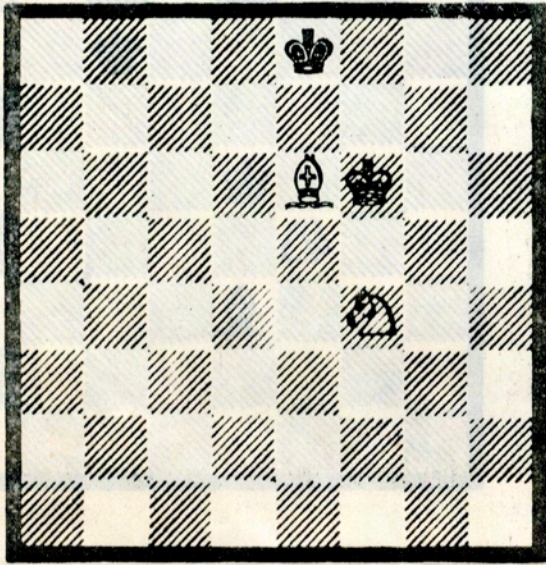
1



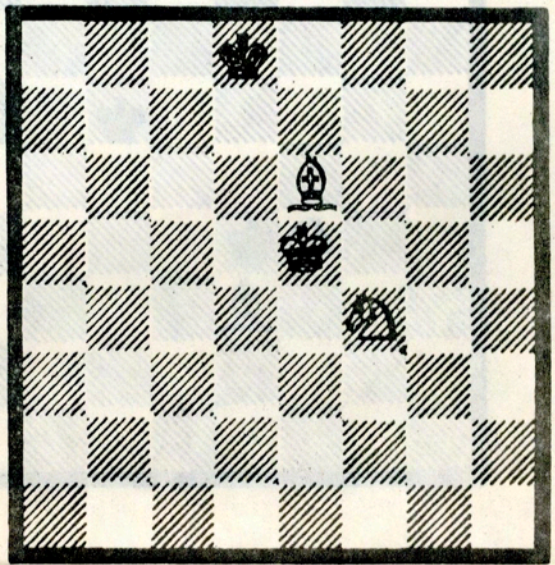
2



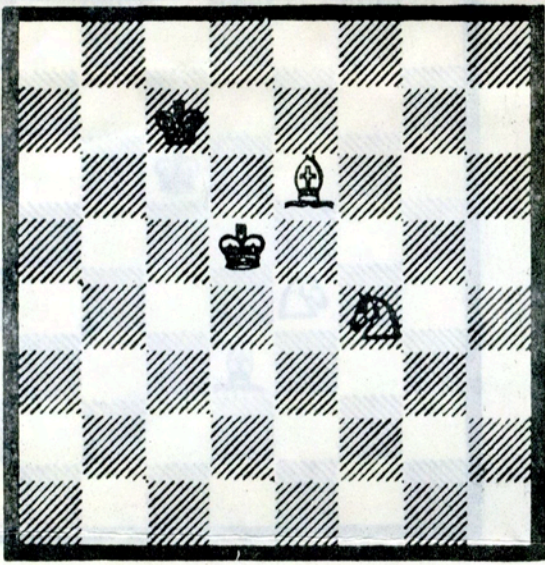
3



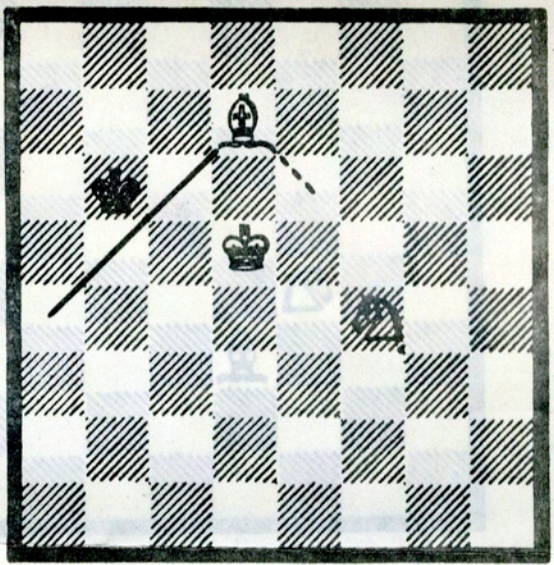
4



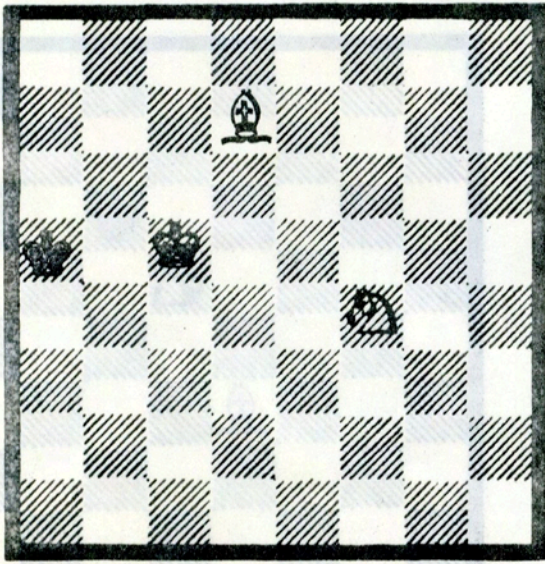
5



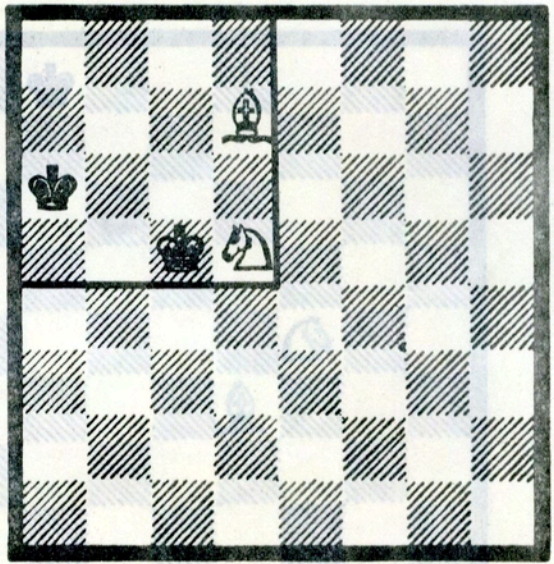
6



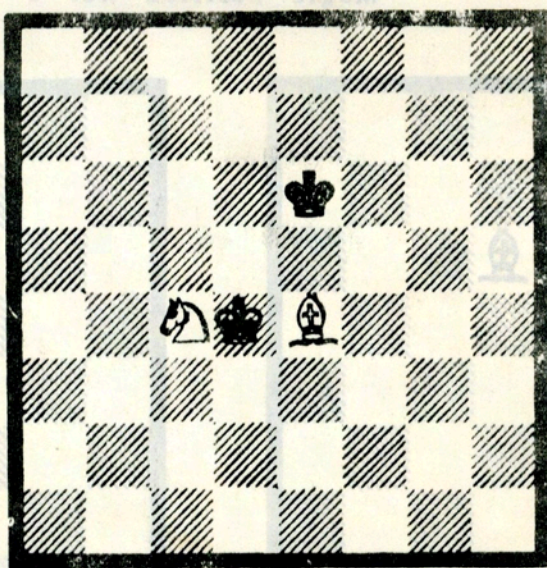
7



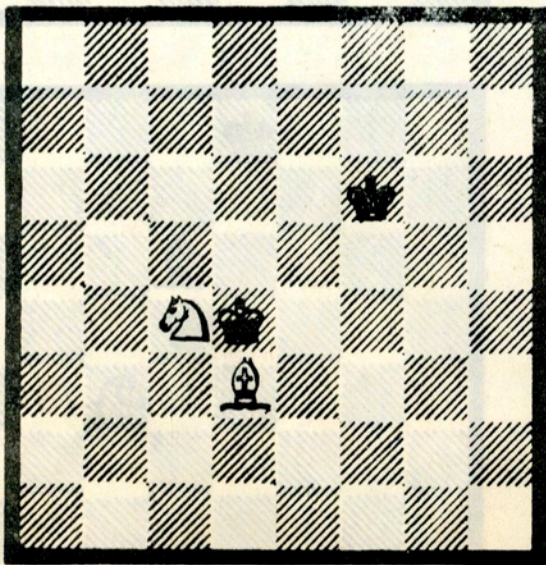
8



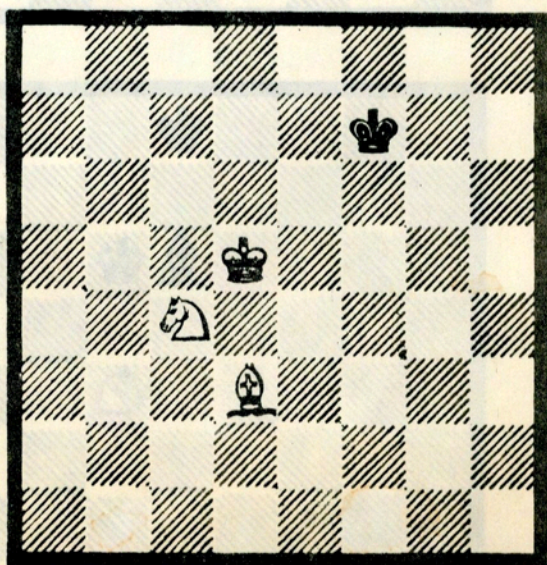
THE
GENERAL
POSITION



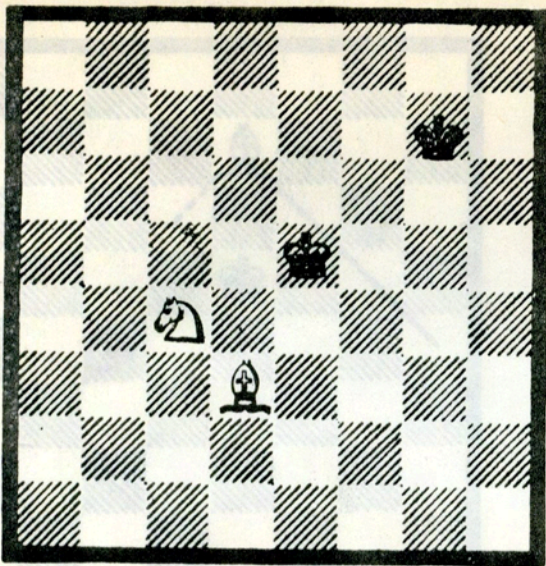
2



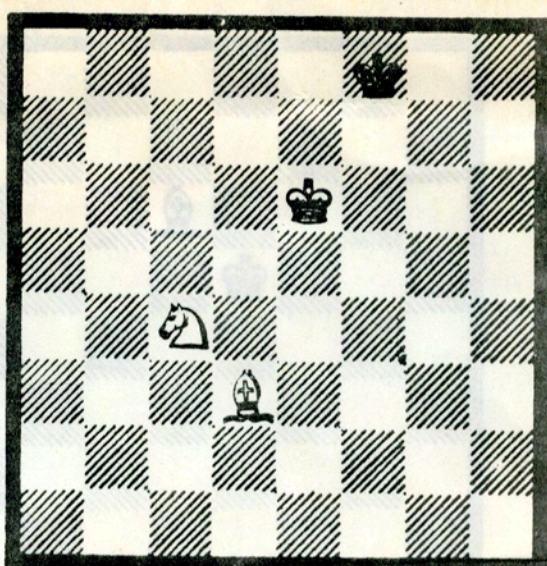
3



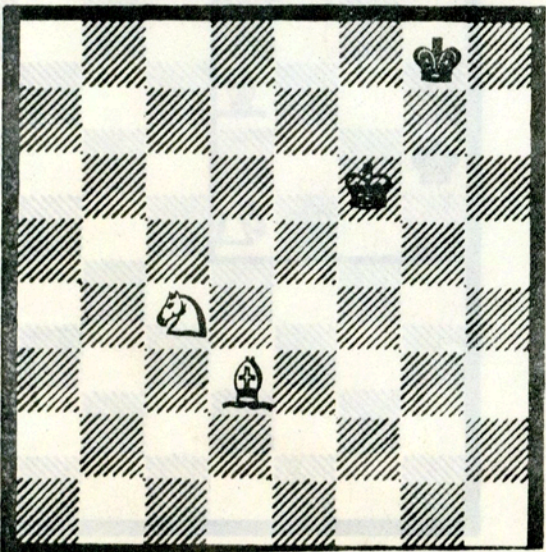
4



5



6



7

