

CHABOT COLLEGE
SOUTH COUNTY JOINT JUNIOR COLLEGE DISTRICT
25555 Hesperian Boulevard
Hayward, California 94545

MEMORANDUM

FROM: Shanon L. Christiansen, Santiago Garza and Donald R. Milanese
SUBJECT: Autumn Quarter, 1974 Assignment Sheet
September 16 - December 14, 1974
TO:

SHORMAN R

AUTUMN 73

RECREATION 983 71
ADV CHESS INSTR

W 7.00- 9.50PM ROOM 317 LEC

This is to remind you that you have accepted the assignment(s) indicated above.

SLC:ab
2-15-74

AS OF NOV. 1, 1974

76 RECREATION 983 71

STUDENT NAME

1	ANDRAKIN DAVID AL ✓	
2	BROCKMAN KIP M ✓	
3	DYSLIN MICHAEL REED ✓	
4	GALINDEZ MANUEL JIME ✓	
5	GODANIS MICHAEL D	
6	JARVIS BRUCE BYRON ✓	
7	LAWLESS KERRY HAMILT	11
8	LOPEZ LUPE ALFONSO	
9	MARTINEZ ROBERT STEV	
10	MC ALLISTER ROBERT J ✓	
11	MEI KANG ✓	
12	MORA FRANK RICHARD ✓	
13	PADOVANI MICHAEL ART ✓	
14	PELLERIN ROBERT EDGA ✓	
15	ROGERS JERRY LEE ✓	
16	SMITH GARY ROBERT ✓	
17	STAMBUCK DAVID MARTI ✓	
18	TRAINA ELIZABETH ANN	17
19	VANCE LEMOYNE P	
20	WILSON ROBERT ADAM I	
21	CONNOLLY LEO	
22	ROBINSON WILLIAM	
23	VAYSSIE PAUL	
24	EKOOS CARL	
25		
26		
27		
28		
29		
30		
31		
32		
33		
34		
35		

SIGNATURE OF INSTRUCTOR

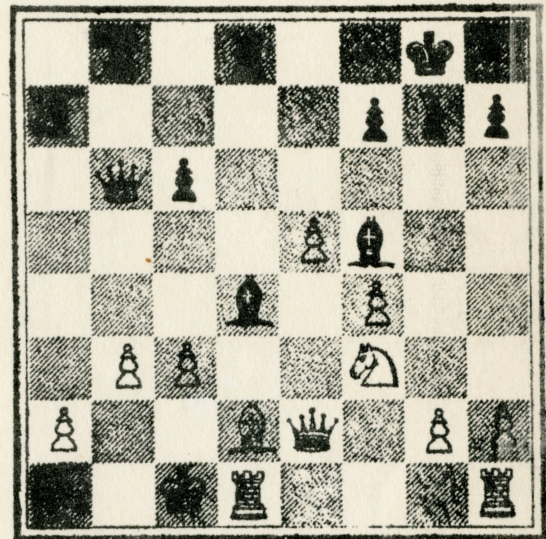
CHECKED BY

Advanced Chess

1. What is the foundation of positional play? (1)
2. What are the aims for White and Black in the King's Gambit Accepted (1 e4 e5 2 f4 ef)? (2)
3. What are the ideas behind Falkbeer's Counter Gambit (1 e4 e5 2 f4 d5)? (3)
4. What is the primary object of the struggle in the opening? (4)
5. How did Anderssen (Black) win this game against Rosanes (Breslau, 1862)? (5)

(Black: K \bar{e} 8, Qb6, Rb8, Rd8, Bd4,
Bf5, ppa7, c6, f7, \bar{e} 7, h7)

(White: Kc1, Qe2, Rd1, Rh1, Bd2,
Nf3, ppa2, b3, c3, e5, f4, \bar{e} 2, h2)

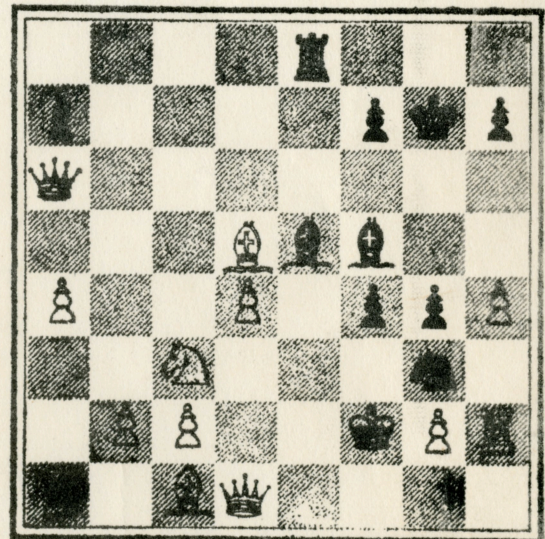


6. After 1 e4 e5 2 f4 ef 3 Nf3 \bar{e} 5, why is 4 h4 instead of 4 Bc4 more in accord with the idea of the King's Gambit? (5)

7. How did Anderssen (Black) win this game against Rosanes (Breslau, 1863)? (7)

(Black: K \bar{e} 7, Qa6, Re8, Be5, Bf5,
N \bar{e} 3, ppa7, f4, f7, \bar{e} 4, h7)

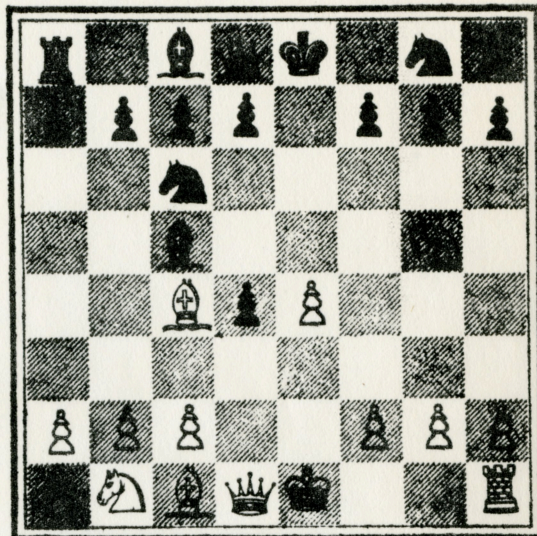
(White: Kf2, Qd1, Ra1, Rh2, Bc1,
Bd5, Nc3, ppa4, b2, c2, d4, \bar{e} 2, h4)



8. What is the main reason for the inferiority of Philidor's Defense (1 e4 e5 2 Nf3 d6)? (7)
9. What is the disadvantage of an isolated center pawn in the opening? (8)
10. Why is a knight the most effective piece to exploit the weakness of

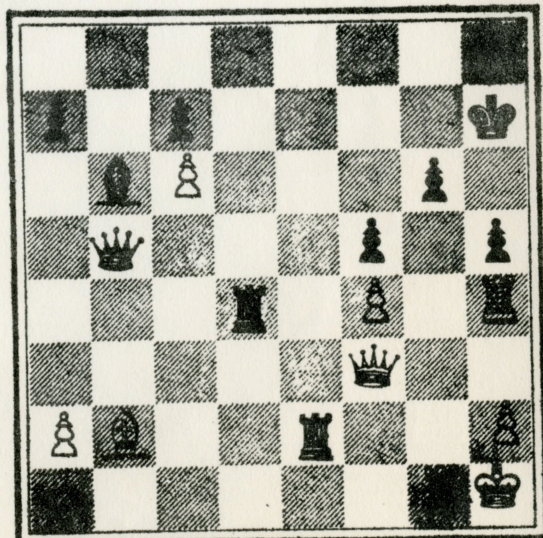
14. How does Black's move in this position (Morphy--Meek, Mobile, 1855)(13) illustrate Morphy's most important discovery about open games? (12, 14)

(White: Ke1, Qd1, Ra1, Rh1, Bc1,
Bc4, Nc1, Ng5, ppa2, b2, c2, e4, f2,
g2, h2)



20. White has just played Qc3-f3. Who has the better game and why? (28)

(White: Kh1, Qf3, Rg1, Rh4, Bb2,
ppa2, c6, f4, h2)

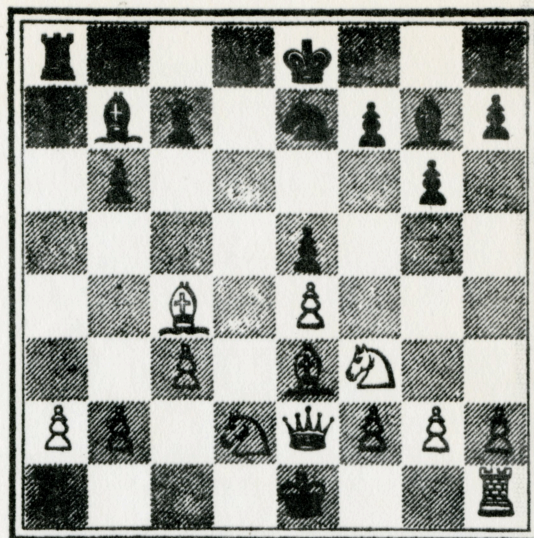


21. What has Steinitz gained in this position by playing Qd1-e2 instead

of castling? (29)

(Black: Ke8, Qd8, Ra8, Rh8, Bb7, Bg7, Nb8, Ne7, ppa7, b6, c7, e5, f7, g6, h7)

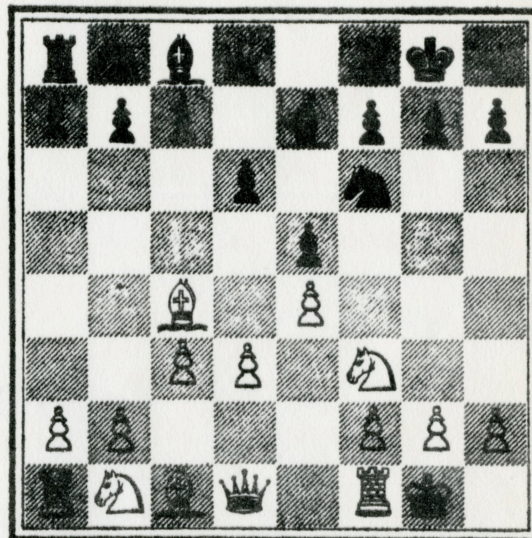
(White: Ke1, Qe2, Ra1, Rh1, Bc4, Be3, Nd2, Nf3, ppa2, b2, c3, e4, f2, g2, h2)



22. Identify the good and bad bishops for both sides in this position, indicating which side possesses the better bad bishop and why. (30, 43)

(Black: Ke8, Qd8, Ra8, Rf8, Bc8, Be7, Nb8, Nf6, ppa7, b7, c7, d6, e5, f7, g7, h7)

(White: Ke1, Qd1, Ra1, Rf1, Bc1, Bc4, Nb1, Nf3, ppa2, b2, c3, d3, e4, f2, g2, h2)

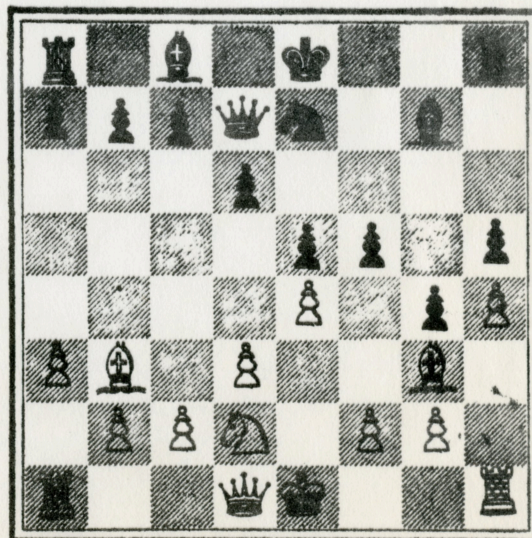


23. When attacking a restricted position, is it generally best to exchange, support or withdraw an attacking unit that has been threatened with capture? (31)

24. Black has just played f7-f5. Who has the better game and why? (32)

(Black: Ke8, Qd7, Ra8, Rh8, Bc8, Bg7, Ne7, ppa7, b7, c7, d6, e5, f5, g4, h5)

(White: Ke1, Qd1, Ra1, Rh1, Bb3, Be3, Nd2, ppa3, b2, c2, d3, e4, f2, g2, h4)

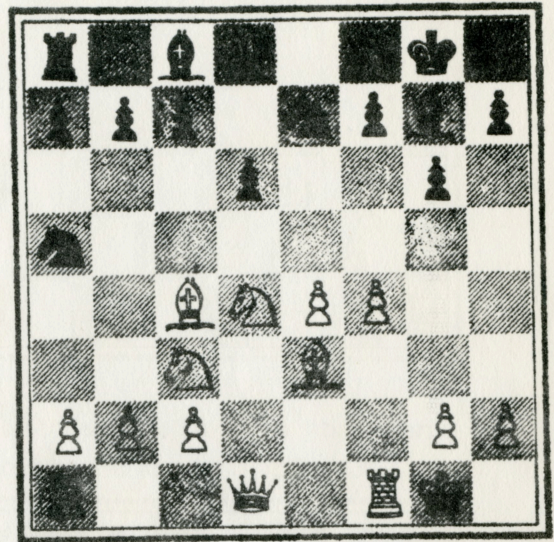


25. What is White's opening objective in the Vienna Game (1 e4 e5 2 Nc3)? (34)

26. For what purpose did Black play Nc6-a5 in this position (Rosenthal--Steinitz, Vienna, 1873)? (35)

(Black: K ϵ 8, Qd8, Ra8, Rf8, Bc8, B ϵ 7, Na5, Ne7, ppa7, b7, c7, d6, f7, g6, h7)

(White: K ϵ 1, Qd1, Ra1, Rf1, Bc4, Be3, Nc3, Nd4, ppa2, b2, c2, e4, f4, g2, h2)



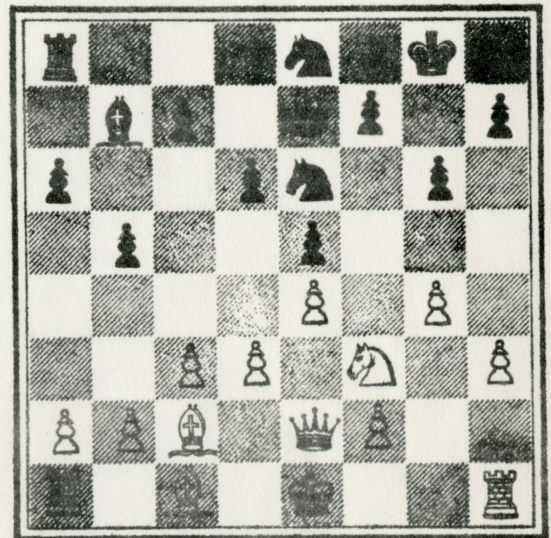
27. What was Steinitz's method for turning the advantage of the two bishops to the fullest possible account in semi-open positions? (35-36)

28. After 1 e4 e5 2 Nf3 Nc6 3 Bb5 a6 4 Ba4 b5 5 Bb3, why is White's position an improvement over 1 e4 e5 2 Nf3 Nc6 3 Bc4? (37)

29. Identify and define the term "weak points" as it applies to Black's position. How should such weak points be exploited? (38-39)

(Black: K ϵ 8, Qe7, Ra8, Rf8, Bb7, Ne6, Ne8, ppa6, b5, c7, d6, e5, f7, g6, h7)

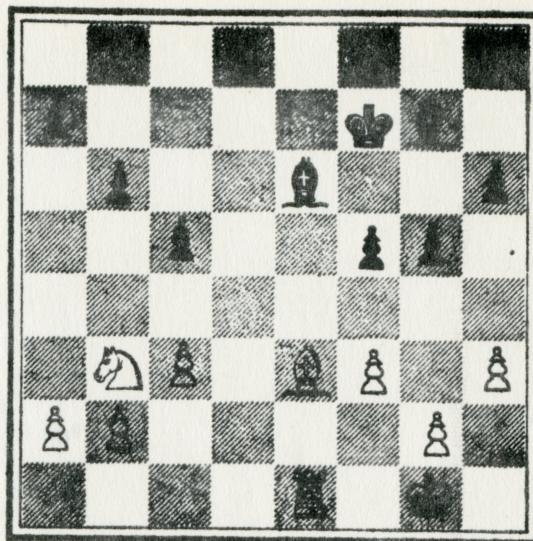
(White: Ke1, Qe2, Ra1, Rh1, Bc1, Bc2, Nf3, ppa2, b2, c3, d3, e4, f2, g4, h3)



30. Black has just played f6-f5. Who has the better game and why? (40-41)

(Black: Kf7, Rd8, Be6, Bg7, ppa7, b6, c5, f5, g5, h6)

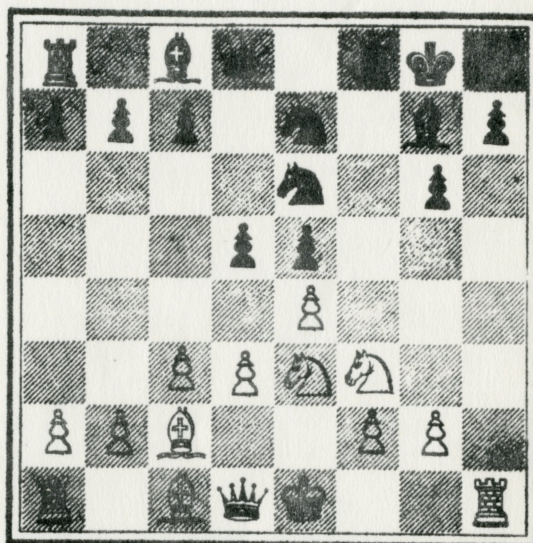
(White: Ke1, Re1, Be3, Nb3, ppa2, b2, c3, f3, g2, h3)



31. What plan did Steinitz evolve in this position to expose the weakness created by Tschigorin's last move, f7xg6? (43-44)

(Black: Kg8, Qd8, Ra8, Rf8, Bc8, Bg7, Ne6, Ne7, ppa7, b7, c7, d5, e5, g6, h7)

(White: Ke1, Qd1, Ra1, Rh1, Bc1, Bc2, Ne3, Nf3, ppa2, b2, c3, d3, e4, f2, g2)



32. What is the positional justification for Steinitz's pawn sacrifice, d4-d5, in this position? (46)

(Black: Ke8, Qd7, Ra8, Rh8, Ne7, ppa7, b7, c6, f6, g7, h7)

(White: Ke1, Qe2, Rc1, Re1, Nf3, ppa2, b2, d4, f2, g2, h2)

