

MONTEREY COUNTY

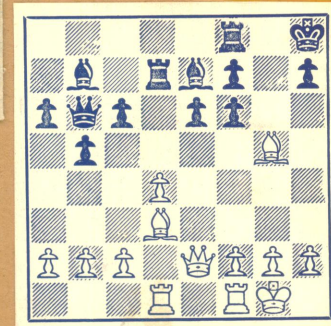
CHESS

CHAMPIONSHIP

TOURNAMENT

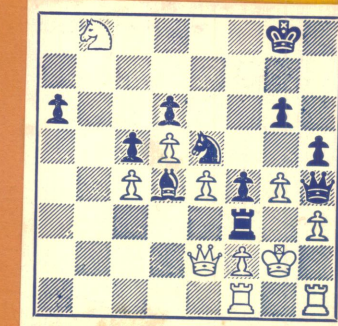
DEC. 7 and DEC. 8, 1968

CASA ALVARADO CHESS CENTER
Ted Yudacufski ~ TOURNAMENT DIRECTOR



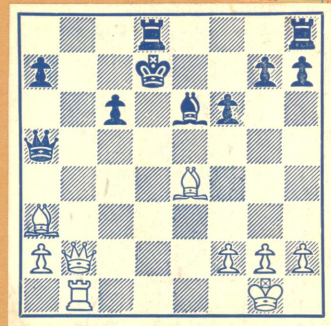
1 White to move and mate
Though it comes a bit late, this quiz is by way of being a review of 1962. If you absorbed the lessons of this magazine then, you ought to solve these mates with real alacrity! This position has a simple point. You ought to perceive it readily, recalling 1962 or not. Do you?

5 ROUNDS SWISS SYSTEM
3 Rounds DEC. 7 ~ 2 Rounds DEC. 8.
Bring your Chess set
Bring your Chess Clock



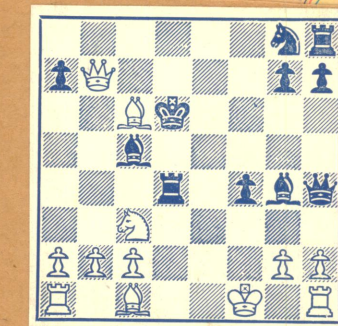
2 Black to move and mate
In this position, recollection of the worthwhile precepts of CHESS REVIEW will certainly aid you to find the mate, making a truism of "The difficult we do instantly." All right then, rapidly or with due deliberation, it is up to you to create the Bodking.

TITLE, TROPHY and \$ 25.00 CASH to
Monterey County Chess Champion
WOMAN'S TROPHY AND TITLE
Other Awards and Class Prizes



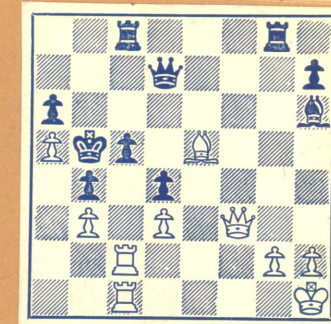
3 White to move and mate
It may be premature to say so now — or it may amount to a helpful clue. At any rate after you have the solution well in hand, you'll understand our paraphrase of Shakespeare: White the quietus makes with a bare Bodking. Find the mate and get the point.

This Tournament open to all residents
of Monterey County, and all military
personnel on active duty stationed
in Monterey County



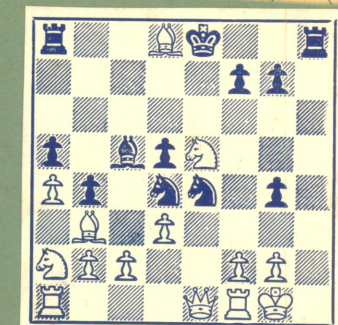
4 Black to move and mate
Here again applies that apt line: "The difficult we do instantly; the impossible takes us a little time." If you saw this position last year, you'll call off the mate at once. Even if you did not note it well, you may. Don't tell us you had to take very much time!

Entry Fee \$5.00 ~ \$4.00 for Juniors under 21
if paid before Nov. 29. Nov. 30 \$1.00 more.
Entrant must be U.S.C.F. member or join
at time of registration.



5 White to move and mate
There were some cute tricks shown in CHESS REVIEW in 1962, and we trust this position bears out that statement. Please note the solutions run to ramifications. So check out all the Black defenses to count as truly correct your point-scoring answer!

Information and advance entries to:
Bill Kennedy ~ M.P.C.C. SECRETARY
Box 261, Monterey - California TREASURER



6 Black to move and mate
Bodking can be fun! And Black must have thought so in this position. As you can see, he has sacrificed his Queen for the chance. The play is memorable. You surely remember it. If not, well, just don your thinking cap and proceed to enjoy bodking on your own.

**Solutions to
ANNOUNCE THE MATE!**

No. 1 White mates after 1 BxP! and 2 Q-K4 (note 2 Q-I5 is slower).

No. 2 Black mates next move after the nifty 1... R-N6!

No. 3 White bares the Bodking with 1 BxP! KxP 2 Q-N7 almost pure mate (if each square of the Black King's field is hit by just one White man); 1... K-B1 2 Q-N8 or 2 Q-N7 is mate, though not quite pure.
No. 4 Black mates properly with 1... Q-B7! 2 KxQ, R-Q8 3 B-K3, BxB.

No. 5 White mates after 1 B-B7! (an example of "Plachutta Interference") with immediate threat of 2 Q-N7 mate. The two thematic (attempted) defenses are a) 1... RxB 2 Q-N7! and 2... KxP 3 R-R1 mate or 2... RxQ 3 RxB mate; and b) 1... QxB 2 RxB! QxR 3 Q-N7! and 3... Q-N3 4 QxQ mate or 3... KxP 4 R-R1 mate. Note that Black's attempt to create a flight square with 1... P-B5 must be met by 2 Q-N7, K-B4 3 RxB mate.

No. 6 Black mates with 1... N-N6 2 N-B6! (2 PxN is mate by 2... N-N6 and, unless White checks, 2... R-R8 is mate). N/5-K7! 3 QxN, NxQ.