

SAMUEL RESHEVSKY

5 HADASSAH LANE

SPRING VALLEY, N. Y.

October 19, 1956

Dear Sir:

Beginning February 1, I plan to make a transcontinental tour of the United States and shall then be available for chess exhibitions.

The direction of my tour and dates will be approximately as follows:

February 1 to February 15 -
Pennsylvania, Delaware, Maryland,
Washington, D. C., West Virginia.

February 16 to March 1 -
Kentucky, Missouri, Louisiana, Texas,
Oklahoma, Kansas, Colorado, New Mexico,
Arizona.

From March 2 to March 15 -
California to Vancouver, British Columbia.

March 16 to April 1 -
through Canada, Illinois, Michigan, Ohio,
New York and New England.

My fee for an appearance for a maximum of 35 boards is \$100 in the United States and \$150 in Canada and Mexico. On marathon exhibitions of more than thirty-five boards there will be an additional charge of \$2.50 per board.

As the tour is in the formative stage at present, I should appreciate hearing from you at your earliest convenience that your club is interested in reserving an evening.

With kind personal regards,

Sincerely yours,

Samuel Reshevsky

SAMUEL RESHEVSKY

he arrived in the United States, where he astonished the chess world by defeating some of the most talented players in set matches and in simultaneous play.

In 1924, Reshevsky retired from the chess arena for school. He emerged in 1925, having won the New York State Chess Championship. There he defeated the inveterate and powerful Harry Pillsbury, who had won the title in 1918. Reshevsky added to his laurels by winning the first United States Chess Championship Tournament in 1926. Since then, he has repeated in this annual event for a grand total of five victories. Twice he has successfully defended his title in set matches with Horowitz and Kasparov. In international tournaments, Reshevsky has always been one of the leaders. He has won the New York State Chess Championship in 1925, 1926, 1927, 1928, 1929, 1930, 1931, 1932, 1933, 1934, 1935, 1936, 1937, 1938, 1939, 1940, 1941, 1942, 1943, 1944, 1945, 1946, 1947, 1948, 1949, 1950, 1951, 1952, 1953, 1954, 1955, 1956, 1957, 1958, 1959, 1960, 1961, 1962, 1963, 1964, 1965, 1966, 1967, 1968, 1969, 1970, 1971, 1972, 1973, 1974, 1975, 1976, 1977, 1978, 1979, 1980, 1981, 1982, 1983, 1984, 1985, 1986, 1987, 1988, 1989, 1990, 1991, 1992, 1993, 1994, 1995, 1996, 1997, 1998, 1999, 2000, 2001, 2002, 2003, 2004, 2005, 2006, 2007, 2008, 2009, 2010, 2011, 2012, 2013, 2014, 2015, 2016, 2017, 2018, 2019, 2020, 2021, 2022, 2023, 2024, 2025.

TRANSCONTINENTAL C H E S S T O U R



SAMUEL RESHEVSKY

was born in Ozorkow, Poland, on November 26, 1911. At the age of five, he learned to play chess, while watching his father play. When he was six, he toured Europe, giving simultaneous exhibitions. In 1920, he arrived in the United States, where he astonished the chess world by defeating some of the most talented players in set matches and in simultaneous play.

In 1924, Reshevsky retired from the chess arena for school. He emerged in 1934 at Syracuse, New York, where he copped premier honors in a field which included all the top flight players of this country.

Margate, England, in 1935 was his first international success. There he won first prize, ahead of the invincible Capablanca. Reshevsky won their individual encounter, and earned the title of Grandmaster.

Reshevsky added to his laurels by winning the first United States Championship Tournament in 1936. Since then, he has repeated in this biennial event, for a grand total of five victories. Twice has he successfully defended his title in set matches with Horowitz and Kashdan.

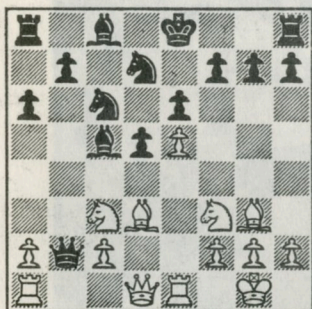
In international tournaments, Reshevsky has always been one of the leaders, finishing among the first three. In 1952 and 1953 he beat Najdorf in two matches for the World Championship of the West. His great ambition is to bring the world's championship to the United States. During July 1955, he defeated M. Botvinnik 2½ to 1½.

U. S. Open Championship Boston, 1944

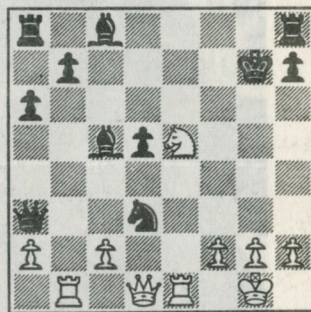
FRENCH DEFENSE

S. Reshevsky White
A. Vasconcellos Black

- | | |
|---------|-------|
| 1 P-K4 | P-K3 |
| 2 P-Q4 | P-Q4 |
| 3 P-K5 | P-QB4 |
| 4 PxP | N-Q2 |
| 5 N-KB3 | BxP |
| 6 B-Q3 | N-K2 |
| 7 O-O | N-QB3 |
| 8 B-KB4 | Q-B2 |
| 9 N-B3 | P-QR3 |
| 10 R-K1 | Q-N3 |
| 11 B-N3 | QxP |



- | | |
|----------|-------|
| 12 NxP | PxN |
| 13 R-N1 | Q-R6 |
| 14 P-K6 | N-B3 |
| 15 PxP† | KxP |
| 16 B-R4 | N-QN5 |
| 17 N-K5† | K-B1 |
| 18 BxN | NxB |
| 19 BxP† | KxB |



- | | |
|-----------|---------|
| 20 RxP† | B-K2 |
| 21 Q-R5 | R-B1 |
| 22 Q-N5† | K-R1 |
| 23 N-N6† | PxN |
| 24 Q-R6† | K-N1 |
| 25 QxP† | K-R1 |
| 26 R(7)xB | Resigns |