

# CHESS

BY ISAAC KASHDAN  
INTERNATIONAL GRANDMASTER  
Address letters to Chess Editor, L.A. Times  
Los Angeles 53, Calif.

## CALIFORNIA STATE CHESS CHAMPIONSHIP

|                   | 1 | 2 | 3 | 4 | 5 | 6 | 7 | 8 | 9 | 10 | W  | L  |
|-------------------|---|---|---|---|---|---|---|---|---|----|----|----|
| 1—William Addison | x | ½ | 1 | 1 | ½ | 1 | 0 | 1 | 1 | 1  | 7  | 2  |
| 2—Ray Martin      | ½ | x | 0 | 0 | 1 | 1 | 0 | 1 | 1 | 1  | 5½ | 3½ |
| 3—Walt Cunningham | 0 | 1 | x | 1 | 0 | 0 | 1 | ½ | ½ | 1  | 5  | 4  |
| 4—Norris Weaver   | 0 | 1 | 0 | x | 1 | ½ | 0 | 1 | ½ | 1  | 5  | 4  |
| 5—John Blackstone | ½ | 0 | 1 | 0 | x | 0 | 1 | 1 | 0 | 1  | 4½ | 4½ |
| 6—Roy Hoppe       | 0 | 0 | 1 | ½ | 1 | x | 1 | 0 | ½ | ½  | 4½ | 4½ |
| 7—Leo Kupersmith  | 1 | 1 | 0 | 1 | 0 | 0 | x | 0 | 0 | 1  | 4  | 5  |
| 8—Stephen Matzner | 0 | 0 | ½ | 0 | 0 | 1 | 1 | x | ½ | 1  | 4  | 5  |
| 9—Irving Rivise   | 0 | 0 | ½ | ½ | 1 | ½ | 1 | ½ | x | 0  | 4  | 5  |
| 10—Max Wilkerson  | 0 | 0 | 0 | 0 | 0 | ½ | 0 | 0 | 1 | x  | 1½ | 7½ |

### ADDISON AGAIN WINS STATE CHESS TITLE

William G. Addison of Los Angeles retained his title as California state chess champion, scoring 7-2 to win the tournament at the Herman Steiner Chess Club, 8801 Cashio St.

After a first round loss to Leo Kupersmith, Addison bore down and was never again in danger. He won six games and drew twice, with Ray Martin of Los Angeles, and in the final round with John Blackstone of Saratoga.

Addison had actually clinched the top honors before starting the last round. His final margin was 1½ points ahead of Martin, who took second place with a score of 5½-3½.

Tied for third place were Walt Cunningham of Arcadia and Norris Weaver of Berkeley, each with 5-4. The final round was a disappointment to both, as Cunningham lost to Roy Hoppe of Novata, and Weaver to Kupersmith. Martin had moved ahead by defeating Max Wilkerson of San Francisco at the same time.

There was a difference of only 1½ points between second place and ninth, as shown by the full cross-table below. Only Wilkerson seemed to be out-classed, yet he won a fine game against former California champion Irving Rivise of Los Angeles.

The tournament is one of the major annual events of the California State Chess Federation. It is always held over the Thanksgiving weekend, with the site alternating between Los Angeles and San Francisco.

Gordon Barrett of Los Angeles directed with his usual thoroughness and efficiency. Following are games from the tournament:

#### QUEEN'S GAMBIT

|                         |                        |                         |                        |
|-------------------------|------------------------|-------------------------|------------------------|
| <b>Addison</b><br>White | <b>Rivise</b><br>Black | <b>Addison</b><br>White | <b>Rivise</b><br>Black |
| 1-P-Q4                  | P-Q4                   | 19R-Q                   | N-R4                   |
| 2-P-QB4                 | PxP                    | 20-RxRch                | QxR                    |
| 3-N-KB3                 | N-KB3                  | 21-Q-Q                  | Q-N3                   |
| 4-P-K3                  | B-N5                   | 22-B-K2                 | N-B3                   |
| 5-BxP                   | P-K3                   | 23-B-B3                 | P-QR4                  |
| 6-Q-N3                  | BxN                    | 24-Q-Q4                 | Q-N5                   |
| 7-PxB                   | QN-Q2                  | 25-N-K2                 | P-R4                   |
| 8-QxP                   | P-B4                   | 26-P-KR3                | Q-K8ch                 |
| 9-N-B3                  | B-K2                   | 27-K-N2                 | Q-QN8                  |
| 10-PxP                  | NxP                    | 28-N-B                  | Q-B4                   |
| 11-Q-B6ch               | K-B                    | 29-Q-K5                 | Q-B7                   |
| 12-P-B4                 | R-B                    | 30-Q-B3                 | Q-N8                   |
| 13-Q-B3                 | P-N3                   | 31-B-R3                 | KN-Q2                  |
| 14-O-O                  | K-N2                   | 32-QxP                  | B-B7                   |
| 15R-Q                   | Q-N3                   | 33-Q-B7                 | B-B                    |
| 16-P-N3                 | KR-Q                   | 34-P-N4                 | Q-R5                   |
| 17-B-N2                 | K-N                    | 35-PxN                  | QxB                    |
| 18-RxRch                | RxR                    | 36-QxN                  | Resigns                |

#### SICILIAN DEFENSE

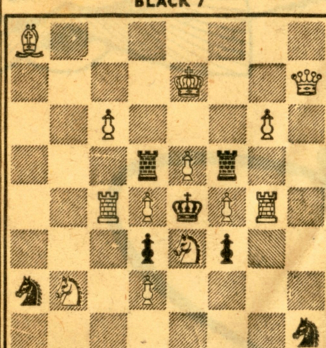
|                            |                            |                            |                            |
|----------------------------|----------------------------|----------------------------|----------------------------|
| <b>Blackstone</b><br>White | <b>Cunningham</b><br>Black | <b>Blackstone</b><br>White | <b>Cunningham</b><br>Black |
| 1-P-K4                     | P-QB4                      | 21-P-K5                    | N-N4                       |
| 2-N-KB3                    | P-Q3                       | 22-N-K4                    | NxN                        |
| 3-P-Q4                     | PxP                        | 23-BxN                     | Q-Q2                       |
| 4-NxP                      | N-KB3                      | 24-BxP                     | R-R2                       |
| 5-N-QB3                    | P-QR3                      | 25-B-K4                    | R-B2                       |
| 6-B-KN5                    | P-K3                       | 26-R-R7                    | Q-N5                       |
| 7-P-B4                     | B-K2                       | 27-R-R4                    | Q-N2                       |
| 8-Q-B3                     | Q-B2                       | 28-R-R7                    | Q-N5                       |
| 9-O-O-O                    | QN-Q2                      | 29-B-R6                    | R-B                        |
| 10-Q-N3                    | P-R3                       | 30-B-KN7                   | K-Q                        |
| 11-B-R4                    | P-KN4                      | 31-B-B6ch                  | K-B2                       |
| 12-PxP                     | R-KN                       | 32-B-B3                    | Q-QB5                      |
| 13-B-K2                    | N-K4                       | 33-RxP                     | K-N3                       |
| 14-N-B3                    | NxN                        | 34-P-B3                    | B-B3                       |
| 15-BxN                     | PxP                        | 35-B-Q8ch                  | K-B4                       |
| 16-BxP                     | N-R2                       | 36-BxB                     | RxB(3)                     |
| 17-BxP                     | RxQ                        | 37-R-QN7                   | R-B                        |
| 18-BxP                     | Q-R4                       | 38-P-N4 ch                 | K-B3                       |
| 19-PxR                     | Q-N4ch                     | 39-R-N6 mate               |                            |
| 20-B-B4                    | Q-N2                       |                            |                            |

#### QUEEN'S GAMBIT DECLINED

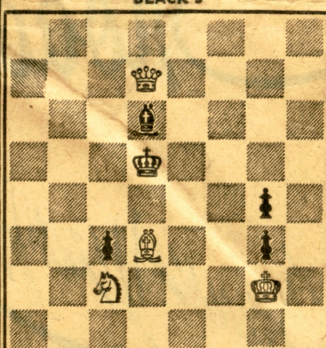
|                          |                           |                          |                           |
|--------------------------|---------------------------|--------------------------|---------------------------|
| <b>Cunn'gam</b><br>White | <b>Wilkerson</b><br>Black | <b>Cunn'gam</b><br>White | <b>Wilkerson</b><br>Black |
| 1-P-Q4                   | N-KB3                     | 16-P-K4                  | B-K3                      |
| 2-P-QB4                  | P-K3                      | 17-P-B4                  | Q-B2                      |
| 3-N-QB3                  | P-Q4                      | 18-P-B5                  | B-Q2                      |
| 4-PxP                    | NxP                       | 19-P-B6                  | R-K                       |
| 5-N-B3                   | B-K2                      | 20-Q-B3                  | R-K3                      |
| 6-P-K3                   | O-O                       | 21-P-K5                  | RxKP                      |
| 7-B-B4                   | N-N3                      | 22-B-B4                  | RxRch                     |
| 8-B-N3                   | P-QB4                     | 23-RxR                   | Q-B4ch                    |
| 9-O-O                    | N-B3                      | 24-K-R                   | B-B3                      |
| 10-R-K                   | B-B3                      | 25-BxPch                 | KxB                       |
| 11-N-K4                  | P-B5                      | 26-Q-R3ch                | K-N3                      |
| 12-B-B2                  | P-K4                      | 27-Q-N3ch                | KxP                       |
| 13-NxBch                 | QxN                       | 28-B-K5ch                | K-B4                      |
| 14-PxP                   | NxP                       | 29-Q-B4ch                | K-N3                      |
| 15-NxN                   | QxN                       | 30-Q-N4ch                | Resigns                   |

#### SICILIAN DEFENSE

DEC. 8, 1963  
TIMES PROBLEM 3543  
By L. Scotti  
BLACK 7



WHITE 13  
White mates in two. *N-R3*  
TIMES PROBLEM 3544  
By A. Gruenwald  
BLACK 5



WHITE 4  
White mates in three.

The theme in 3543 is multiple discovered checks, an amazing total of 10 after various rook moves. If Black moves first in the three-mover, it is mate immediately. Somehow it takes longer with White to play.

SOLUTION TO PROBLEM 3537: N-K3.  
SOLUTION TO PROBLEM 3538: B-R8.  
If PxP, 2-N-K6sh; If P-B6, 2 B-R1.

#### SOLVERS' LIST

Five points — F. Aks, Mrs. R. Coogan, C. Foster, J. R. Martinez, F. J. Munson, I. E. Nordstrom.  
Three points — P. J. Burton.  
Two points — D. Daggett, O. H. Ketchum, J. R. Nap. One point — J. E. Gersch, J. T. Haag, Dr. J. A. Healy, G. F. Oglesby, M. Roth, S. Schwarz.

The list is smaller than usual this week. Either our solvers are not keeping up or we missed some of our mail.

Send solutions to Chess Editor, Los Angeles Times. They must be postmarked within two weeks of publication of problems to receive credit.

entering the usual club tournament.

The idea is to have four-man round robin tournaments, which are completed in one evening. No game can last more than one hour, and not more than three games are played by any individual. The entrance fee is \$1, and the winner becomes a member of the USCF. This is worth \$5, and includes a subscription to the monthly magazine Chess Life.

Edmundson has worked out a complete procedure and set of rules for clubs wishing to organize Chess for Fun tournaments. Anyone wishing the details plus a sample scoring table can write to him at 210 Britton Way, Mather AFB, California 95655.

We shall publish excerpts from these rules in next week's column.

#### L.A. CHESS CLUB

The L.A. Chess Club International has moved to a new downtown club room at 424 S Broadway, Room 421. The club is open daily from noon to midnight. Visitors are welcome.



## SICILIAN DEFENSE

| Rivise<br>White | Wilkerson<br>Black | Rivise<br>White | Wilkerson<br>Black |
|-----------------|--------------------|-----------------|--------------------|
| 1-P-K4          | P-QB4              | 19-P-R5         | Q-B6               |
| 2-N-KB3         | P-Q3               | 20-Q-Q3         | Q-N7ch             |
| 3-P-Q4          | PxP                | 21-K-Q2         | KR-B               |
| 4-NxP           | N-KB3              | 22-R-QN         | QxRP               |
| 5-N-QB3         | P-KN3              | 23-R-R          | Q-N7               |
| 6-B-K3          | B-N2               | 24-KR-QN        | B-B4               |
| 7-P-B3          | O-O                | 25-NxB          | Q-B6ch             |
| 8-Q-Q2          | N-B3               | 26-QxQ          | BxQch              |
| 9-B-QB4         | N-Q2               | 27-K-Q3         | PxN                |
| 10-O-O-O        | N-N3               | 28-R-R2         | R-R4               |
| 11-B-N3         | N-R4               | 29-K-K2         | RxP                |
| 12-Q-K2         | B-Q2               | 30-RxP          | R-K4               |
| 13-N-Q5         | NxBch              | 31-P-B4         | R-K5               |
| 14-NxN          | NxN                | 32-R-R4         | B-N5               |
| 15-PxN          | P-QR4              | 33-RxB          | RxR                |
| 16-P-KR4        | P-R5               | 34-K-Q3         | P-B3               |
| 17-N-Q4         | P-R6               | 35-P-B4         | R(1)xP             |
| 18-P-QN3        | Q-R4               | Resigns         |                    |

## MRS. PIATIGORSKY WINS WOMEN'S TOURNEY

Mrs. Jacqueline Piatigorsky, president of the Herman Steiner Chess Club, played in brilliant form to outclass her opposition and win the California Women's Open Championship, contested at the club last weekend.

Mrs. Piatigorsky won five games in succession, including good victories against her chief rivals, Mrs. Lina Grumette and Mrs. Mabel Burlingame. In both games Mrs. Piatigorsky obtained an early advantage and scored by steady endgame play.

Mrs. Burlingame and Mrs. Grumette tied for second place with final scores of 3½-1½. They drew their individual game and won their remaining three. Tied for fourth with 3-2 were Selma Sturges and Dr. Patricia M. McIntyre.

Remaining scores of the 10 participants were Willie Mae Bettencourt, Jayne Culotta and Olga Higgins, 2-3; Anita Zelman, 1-4, and Jean Hudson, who could not continue after two rounds, 0-2.

The director was former California state champion Harry Borochoy, who handled the chores of pairing and scoring the Swiss system event in fine style.

## CHESS FOR FUN

Maj. Ed Edmundson of Sacramento, newly elected president of the U.S. Chess Federation, has been exploring a number of ideas in his drive to build up membership in chess organizations.

One plan that has great promise, and that Edmundson has already used successfully in his own club, is Chess for Fun. This is intended particularly for beginners and weaker players who would never dream of en-