

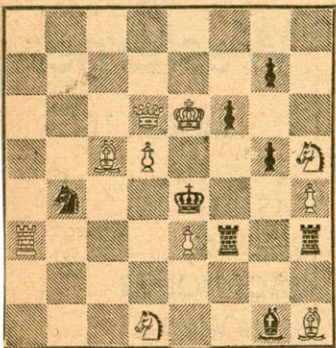
# CHESS

BY HERMAN STEINER

FORMER UNITED STATES CHAMPION  
Address letters to Chess Editor, L.A. Times,  
Los Angeles 53, Cal.

June 28, 1953  
TIMES PROBLEM 2455

By J. A. Ros  
BLACK 8

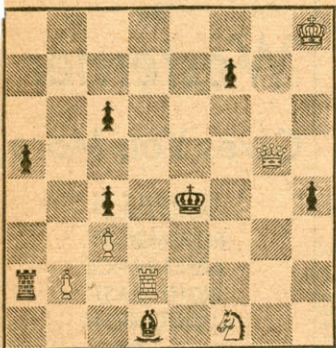


WHITE 10

White mates in two.

TIMES PROBLEM 2456

By F. af Gelferjam  
BLACK 8



WHITE 6

White mates in three.

SOLUTION TO PROBLEM 2451: N×QP  
SOLUTION TO PROBLEM 2452: Q-K3

We received solutions from: C. B. Collins, C. P. Ford, D. Kopeck, N. Lesser, J. P. Walsh, B. McGuire, P. V. Nielsen, W. L. Koethen R. E. Ezelle, W. M. Nichols, A. P. Berthold, M. Morris, E. E. Hetherington, J. J. Adams, L. B. Rotter, T. Rothman, K. Chambers, L. Harvey, O. F. Moench, Dr. A. J. Greco, D. Woodruff, L. H. Frembling, J. C. Dickson, William A. Martin (school age, Long Beach), Master Sgt. K. B. Fox, Capt. R. Sinnott (welcome back!), J. Kaufman, L. A. Victor, Dr. J. A. Healy, C. Bedal (in problem 2447 1.N-N5, if N-Q or Q3; 2.Q-K5 mate!), R. Badt, W. B. Tudor, R. Moseley, Toscha Seidel, W. C. Everett, C. Huffman, H. G. Webb, S. Emanuel, P. Honvey, A. Jacobs, J. Davidson, S. W. Nay, W. Rankel, Mrs. D. R. Handley (any book for beginners will have it), A. E. Pound, K. J. Hartman.

### WATER & POWER TROUNCES TIMES

The Los Angeles Water & Power Chess Club last Tuesday took the measure of The Times Chess Club, 7-3. The games were played in the Times Recreation Room. The results:

Times	Water & Power
Dr. Healy . . . . . 1	J. Bell . . . . . 0
W. O. Look . . . . . 0	J. Freed . . . . . 1
H. Newman . . . . . 0	D. Norton . . . . . 1
O. French . . . . . 1/2	M. Kroman . . . . . 1/2
L. Bentley . . . . . 1/2	C. Tabor . . . . . 1/2
P. Kempster . . . . . 0	F. Larsen . . . . . 1
J. Krakaur . . . . . 0	G. Friedman . . . . . 1
W. Levering . . . . . 1	Helen Lunday . . . . . 0
A. Caselier . . . . . 0	E. Perdue . . . . . 1
O. L. Feldman . . . . . 0	A. Thompson . . . . . 1
	3 . . . . . 7

### NEW CHESS CLUB FORMED

Mabel Burlingame of 3310 E Roosevelt St., Phoenix, writes: "We now have the Encanto Chess Club in Phoenix and are trying to get a chess column started in the Phoenix paper, and would like to know if the games you publish are copyrighted? Or if we might have permission to publish some of them?"

Congratulations! By all means you may publish the games or any part your readers may be interested in. For further assistance write to the U.S. Chess Federation, Kenneth Harkness, 93 Barrow St., New York 14, N.Y.

### HOLLYWOOD CHESS GROUP WINS COUNTY LEAGUE B GROUP TEAM CHAMPIONSHIP

The Hollywood Chess Group won the 1953 Los Angeles County Chess League's B Group Team Championship in its last encounter with the Inglewood Chess Club. A 3-3 tie resulted which gave the Hollywood Chess Group first place.

	MP	GW	GL	MD	L	W
Hollywood . . . . .	5	25	10	1/2	0	4
Inglewood . . . . .	4 1/2	26	-10		3	0
Sta. Monica . . . . .	3	18 1/2	-17 1/2		2	1
Wilshire . . . . .	2 1/2	20	-16		1	2
Valley . . . . .	2	13 1/2	-22 1/2		2	3
Cosmo . . . . .	1 1/2	13	-23		1	4
Wa. & Power . . . . .	1/2	9 1/2	-26 1/2		1	5

### GOOD NEWS FOR CHESS PLAYERS

You can save up to 70% on chess books and up to 21% on playing equipment by joining the United States Chess Federation, the national organization of American chess players. Big discounts on purchases is one of the many benefits you gain as a member. You also receive the official periodical, Chess Life, published twice a month, with news, games, problems, combinations, endings and other features for all classes of players. Membership entitles you to enter USCF-sponsored tournaments and compete for cash prizes. You can become an officially ranked player with a national rating. If you have what it takes you can gain recognition as a U.S. chess expert or chess master. For full details of all membership privileges, sample copy of Chess Life and catalogue of chess books and equipment, just send a post card with your name and address to the United States Chess Federation, 93 Barrow St., New York 14, N.Y.

### STATE CHAMPIONSHIP SEMIFINALS

The California State Championship semifinals played at the Hollywood Chess Group, 108 N Formosa Ave., every Friday at 7:30 p.m. and Sundays at 2 p.m. still has seven players with a perfect score after the first two rounds of play.

The tournament is a 10-round Swiss system where three will qualify for the finals to be played Labor Day in Los Angeles. Irving Rivise of Los Angeles and Henry Gross of San Francisco, co-champions, and Sven Almgren, California open champion, are seeded. Three from the San Francisco Bay area will qualify in a similar tournament and one from Central California.

The winner of this tournament will have the title of California State champion. The winners of each individual section will be known as Northern, Southern or Central California champion.

The standings after two rounds:

	W	L		W	L
Gibbs . . . . .	2	0	Jacobs . . . . .	1	1
Granger . . . . .	2	0	Lebow . . . . .	1	1
Gordon . . . . .	2	0	McKenna . . . . .	1	1
Martin . . . . .	2	0	Remlinger . . . . .	1	1
Mazner . . . . .	2	0	Rogosin . . . . .	1	1
Solana . . . . .	2	0	Steven . . . . .	1	1
Steiner . . . . .	2	0	Wheeler . . . . .	1	1
Banner . . . . .	1 1/2	1/2	Wolfe . . . . .	1	1
Geller . . . . .	1 1/2	1/2	Burns . . . . .	1/2	1 1/2
Gordon . . . . .	1 1/2	1/2	Blumenfeld . . . . .	0	2
Altshiller . . . . .	1	1	Forrest . . . . .	0	2
Freed . . . . .	1	1	Maron . . . . .	0	2
Gross . . . . .	1	1	Woronzoff . . . . .	0	2
Mrs. Grumette . . . . .	1	1	Wyman . . . . .	0	2
Hazard . . . . .	1	1	Young . . . . .	0	2
Hunex . . . . .	1	1	Zelig . . . . .	0	2

### DEAF AND DUMB EXHIBITION

Charles E. Kodil of the Water and Power Chess Club on June 19 played a simultaneous match against eight deaf and dumb players. Playing in the club's quarters he won six, lost to Bob Skinner and drew with F. D. Gilbert.

### RESHEVSKY LEADS NAJDORF

New York Times

NEW YORK, June 27—Samuel Reshevsky of New York, still retaining a one-point lead in his match with Miguel Najdorf of Buenos Aires for the chess championship of the west, began the 15th game of the series in the Argentine capital, according to a report received today. When play was adjourned, after 40 moves, Reshevsky held the superior position.

Against the New Yorker's Queen's Pawn opening, the challenger set up his favorite King's Indian Defense. Up to a point, the rival masters covered familiar ground. Then Reshevsky began to concentrate on the center, which forced Najdorf into a defensive role with little chance to strike back.

Reshevsky had recaptured the lead by winning the 14th game.

The challenger conducted the white pieces in the 14th game of the series, and Reshevsky once more adopted the Nimzowitsch Defense to the Queen's Pawn opening. Reshevsky having explored the possibilities of the variations followed in earlier games of their match, hit on a new line of play which offered better prospects.

Najdorf faced with new problems, failed to rise to the occasion. Grasping an opportunity to force an advance against the white king, Reshevsky essayed a surprise maneuver which was brilliantly successful. Najdorf resigned after 35 moves.

Reshevsky has won four games and Najdorf three. Six have been drawn. Play in the 13th game, which was adjourned twice and which looks drawish, was scheduled to be resumed today.

Reshevsky won the 11th game early in the week to tie the score at 5 1/2-5 1/2.

A draw in the 12th game failed to break the tie.

### Seventh Game

#### NIMZO-INDIAN DEFENSE

Reshevsky	Najdorf	Reshevsky	Najdorf
White	Black	White	Black
1-P-Q4	N-KB3	30-P-N3	N-R6
2-P-QB4	P-K3	31-N-K2	B-K4
3-N-QB3	B-N5	32-B-N4	N-B7
4-P-K3	P-B4	33-R-QB	N-Q5!
5-B-Q3	O-O	34-Q-K3	Q-N2
6-N-B3	P-Q4	35-NxN	BxN
7-O-O	QN-Q2	36-Q-K2	PxP
8-Q-K2	P-QR3	37-BxKP	Q-K4
9-P-QR3	B-R4	38-B-KB3	QxQ
10-R-Q	PxBP	39-BxQ	B-Q4
11-BxP	P-QN4	40-BxP?	R-N
12-B-Q3	B-N2	41-B-QB4	RxB
13-B-Q2	B-N3	42-R-Q	B-N3
14-PxP	BxP	43-BxB	PxB
15-QR-B	Q-N	44-RxP	RxP
16-B-N	R-B	45-R-Q2	P-N4
17-P-R3	N-K4	46-K-R2	K-B2
18-N-N5	B-K2	47-P-N3	P-R4
19-N(3)-K4	NxN	48-K-N2	K-K3
20-NxN	P-B4	49-R-K2ch	K-Q4
21-N-N3	RxR	50-R-K8	R-N7
22-RxR	N-B5	51-R-KB8	K-K5
23-B-B3	Q-K	52-R-B7	B-Q5
24-P-K4	B-N4	53-R-B8	R-K7
25-R-Q	P-N3	54-R-B3	BxP
26-P-QR4	Q-B3	55-R-B7	B-Q5ch
27-PxNP	PxNP	56-K-R	B-K4
28-B-Q3	B-B5	57-Resigns.	
29-Q-B3	Q-B2!		

### Eighth Game

#### NIMZO-INDIAN DEFENSE

Najdorf	Reshevsky	Najdorf	Reshevsky
White	Black	White	Black
1-P-Q4	N-KB3	15-QxB	N-Q2
2-P-QB4	P-K3	16-P-QR4	NxN
3-N-QB3	B-N5	17-PxN	Q-B2
4-P-K3	P-B4	18-P-B4	P-B3
5-B-Q3	O-O	19-PxP	RxP
6-N-B3	P-Q4	20-B-R3	R-K
7-O-O	N-B3	21-QR-K	N-N3
8-P-QR3	BxN	22-P-K4	NxP
9-PxB	P-QN3	23-PxP	RxR
10-PxQP	KPxP	24-RxR	Q-B2
11-B-N2	P-B5	25-Q-K4	NxQP
12-B-B2	N-K2	26-QxP	Draw
13-N-K5	B-B4		agreed
14-P-B3	BxB		

### Ninth Game

#### NIMZO-INDIAN DEFENSE

Reshevsky	Najdorf	Reshevsky	Najdorf
White	Black	White	Black
1-P-Q4	N-KB3	14-B-N3	R-K
2-P-QB4	P-K3	15-P-R3	PxP
3-N-QB3	B-N5	16-BPxP	B-K3
4-P-K3	P-B4	17-KR-B	Q-Q2
5-B-Q3	O-O	18-BxB	RxB
6-N-B3	P-Q4	19-N-N3	Q-Q4
7-O-O	QN-Q2	20-N-B5	R-B3
8-P-QR3	BxN	21-R-B2	QR-QB
9-PxB	PxBP	22-QR-QB	N-K
10-BxP	Q-B2	23-B-B3	N-Q3
11-Q-K2	P-K4	24-B-N4	P-KR4
12-B-N2	P-K5	25-P-QR4	Draw
13-N-Q2	N-N3!		agreed