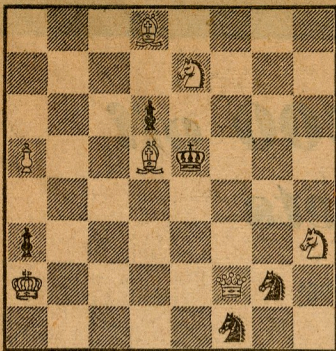


By W. A. Shinkman

BLACK 5



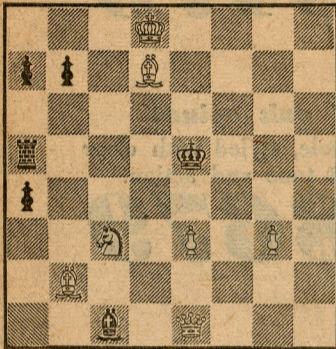
WHITE 7

White mates in two.

TIMES PROBLEM 2502

By G. Helleday

BLACK 6



WHITE 7

White mates in three.

SOLUTION TO PROBLEM 2497:Q-B

SOLUTION TO PROBLEM 2498:N-K6

ADAMS WINS NOVEMBER CONTEST

J. J. Adams of Tucson, Ariz., won the November problem solving contest with a score of 353 points. He is a first-time winner. Congratulations!

Following are the scores of last month's participants. If those who took part previously (not longer than six months) send in solutions again, points will be added and published on the first Sunday of each month.

- |  |
|--|
| J. J. Adams (1, winner, 353); please send address. A. P. Berthold (1), 233; F. E. Boniface, 3; C. B. Collins (7), 59; K. Chambers (3), 325; J. Carrough, 13; H. R. Carr, 5; R. E. Cunningham, 30; M. Dittichon, 0; J. Davidson (7), 142; J. C. Dickson (1), 350; W. C. Everett, 44; W. G. Fox, 6; F. Fisher, 0; C. P. Ford (1), 49; D. M. Fehling, 49; C. J. Gibbs, 38; E. E. Hetherington, 296; C. Huffman (2), 53; L. Harvey (1), 8; (three months of Chess Life). Dr. J. A. Healy, 113; K. J. Hartman, 25; (in Problem 2495: If 1. Q-B7, ? P-B4 !; and no mate on the next move). H. Hamilton, 0; W. R. Johnson, 0; J. Krakowski, 0; J. Kaufman (2), 101; F. C. Loggins, 10 (The Enjoyment of Chess Problems by K. S. Howard, \$3 plus 10 cents postage); D. Kopec, 10; W. E. Kitto, 3; S. R. Leopold, 2; N. Lesser, 133; P. Martin, 17; M. Morris (6), 183; B. McGuire (1), 334; S. W. Nay (1), 294; P. V. Nielsen, 122; R. W. Peterson, 2; W. L. Rankel, 88; T. Rothman (4), 155; L. B. Rotter, 103; J. G. Scipps, 171; S. E. Schwartz, 5; R. Sinnott (1), 75; B. A. Schaeffer, 5; G. Soules Jr., 12; Toscha Seidel (3), 45; W. B. Tudor (5), 35; Dr. M. Tosan, 26; C. G. Taber, 69; C. T. Tongko, 7; T. W. Teece, 0; L. A. Victor (7), 203; J. P. Walsh (4), 68. Scores included Problems 2489-2498. |
|--|

HOLLYWOOD BEATS LONG BEACH

Last Sunday afternoon the Lincoln Park Chess Club of Long Beach was guest of the Hollywood Chess Group. The visiting team lost by a score of 7½-2½. A return match is planned in the near future.

Long Beach Chess Club		Hollywood Chess Group	
S. Giritzky	½	E. Berman	½
G. Steven	0	S. Mazner	1
L. Remlinger	½	I. Rivise	½
R. Gross	½	R. W. Banner	½
T. A. Baraquet	0	R. Jacobs	1
B. Madrid	0	L. Woronzoff	1
F. Reissmann	½	M. Forti	½
O. M. Rolo	½	G. Goehler	½
T. Golden	0	P. Meyer	1
J. Renaldo	0	J. R. Lazos	1
Total	2½	Total	7½

Long Beach had white on the odd numbered boards.

RAPID TRANSIT WINNERS

The weekly Wednesday evening Rapid Transit Tournament played in the Hollywood Chess Group quarters, 108 N Formosa Ave., was won by D. Poliakov of San Francisco, with the score of 15-2; second and third places went to S. Almgren and L. Spinner, 14½-2½; fourth to H. Borochoy, 13½-3½. The tournament is open to anyone interested in playing in it. For information call Webster 1-8817 or visit the group. Open evenings and Saturday and Sunday afternoons.

JUNIOR TOURNAMENT

The Hollywood Chess Group yesterday announced it is sponsoring the first annual Southern California Junior Chess Championship Tournament, to be held at its headquarters at 108 N Formosa Ave., starting at 1 p.m. Dec. 20. More than 50 are expected to enter, including Larry Remlinger, the 11-year-old Long Beach prodigy. It will be a Swiss system tournament to last 14 rounds, which will be played daily. Prizes will be given top winners. The tournament winner will be sponsored in the United States Junior Championship Tournament to be held in Long Beach starting June 29. Entry fee for the Southern California tournament will be \$1. For information call your editor at Webster 1-8817 or Wyoming 3510.

HOLLYWOOD CHESS GROUP CHAMPIONSHIP

After eight rounds of play your editor leads in the Hollywood Chess Group Championship Tournament with the score of 7½-½. In second place is I. Rivise, 6½-1½; third are R. W. Banner and S. Mazner, 6-2; fifth, R. Jacobs and E. Levin, 5½-2½. Following are the eighth-round results: Mazner ½, Steiner ½; Bakst 0, Rivise 1; Banner 1, Alexander 0; Levin 1, Freed 0; Jacobs 1, Blumenfeld 0; Karpilowsky 0, Harari 1; Geller ½, Gardner ½; Goehler ½, Johanson ½; Woronzoff 1, Wheeler 0; Wolfe ½, Mrs. Woronzoff ½; Mrs. Roos 1, Dr. Burns 0; Kleinberg 0; Mrs. Henderson 1.

Ninth-round pairings: Jacobs, Steiner; Rivise, Harari; Alexander, Levin; Woronzoff, Blumenfeld; Geller, Bakst; Gardner, Freed, Karpilowsky, Goehler; Mrs. Grumette, Mrs. Roos; Johanson, Maron; Henderson, Zelig; Wolfe, Wheeler; Bain, Mrs. Platigorsky; Dr. Burns, Sleep; Shearer, Mrs. Henderson; Wyman, Kleinberg. Games are being played evenings and

Saturday and Sunday afternoons. Visitors are welcome.

HERMAN STEINER'S SIMULTANEOUS RESULT

Your editor was guest last Tuesday of the City Terrace Cultural Center Chess Club, 3875 City Terrace Drive, where he played against 22 opponents, winning 21, and one game to be adjudicated against T. A. Baraquet. The club is open on Wednesdays and visitors are welcome.

VAN NUYS CHESS CLUB VS. COMPTON COLLEGE CHESS CLUB

The Van Nuys Chess Club will be guest of the Compton College Chess Club next Friday evening. This is the last match of the 1953 season arranged by the Van Nuys Chess Club.

CANDIDATES TOURNAMENT GAMES

The following games are from the World Champion Candidates Tournament concluded last October in Zurich, Switzerland.

SICILIAN DEFENSE

Geller White	Najdorf Black	Geller White	Najdorf Black
1-P-K4	P-QB4	30-RxRch	QxR
2-N-KB3	P-Q3	31-KN-Q5	NxN
3-P-Q4	PxP	32-NxN	Q-B4
4-NxP	N-KB3	33-R-R	Q-B7
5-N-QB3	P-QR3	34-QxQ	BxQ
6-B-K2	P-K4	35-R-KB.	B-Q5
7-N-N3	B-K3	36-P-B3	B-B4
8-O-O	QN-Q2	37-P-KN4	
9-P-B4	Q-B2		PxPe.p.Ch.
10-P-B5	B-B5	38-KxP	R-N2
11-P-QR4	R-B	39-R-QN	P-B3
12-B-K3	B-K2	40-K-B3	K-B2
13-P-R5	P-R4	41-K-K2	R-N
14-BxB	QxB	42-P-N4	P-N3
15-R-R4	Q-B2	43-K-Q3	PxBP
16-P-R3	P-R5	44-PxBP	PxP
17-R-B2	P-QN4	45-PxP	B-Q5
18-PxPe.p.	NxNP	46-R-QB	K-N2
19-BxN	QxB	47-R-B7ch	K-R3
20-Q-K2	R-R	48-K-K4	K-N4
21-K-R2	O-O	49-R-KR7	B-B7
22-R-B	R-R2	50-R-N7ch	K-R5
23-KR-QR	KR-QR	51-K-B3	B-K8
24-R(1)-R2	B-Q	52-K-N2	R-KB
25-N-R5	R-B	53-P-N5	B-R4
26-N-B4	Q-B3	54-P-N6	BxP
27-N-K3	P-R4	55-NxB	R-QN
28-R-B4	Q-R3	56-R-N4ch	K-R4
29-P-QN3	B-N3	57-N-Q5	Resigns.

NIMZO INDIAN DEFENSE

Najdorf White	Taimanov Black	Najdorf White	Taimanov Black
1-P-Q4	N-KB3	24-NxN	PxN
2-P-QB4	P-K3	25-QxQ	NxQ
3-N-QB3	B-N5	26-B-QB5	KR-K
4-P-K3	O-O	27-B-R2	P-R3
5-B-Q3	P-Q4	28-K-B2	R-B3
6-N-B3	P-QN3	29-B-N4	RxR
7-O-O	B-N2	30-RxR	N-B3
8-B-Q2	PxP	31-B-Q2	N-Q5
9-BXP	QN-Q2	32-B-K3	N-B5
10-Q-K2	P-B4	33-B-R7	R-Q2
11-KR-Q	PxP	34-B-B5	R-KB2
12-NxP	Q-K2	35-R-B3	P-KR4
13-QR-B	P-QR3	36-B-N	N-R6
14-P-QR3	B-B4	37-P-KR4	B-B
15-B-K	P-QN4	38-B-Q4	R-B5
16-B-R2	QR-B	39-B-Q3	RxR
17-P-B3	N-K4	40-BxR	B-B4
18-B-B2	N(3)-Q2	41-B-K2	P-N3
19-B-N	B-R2	42-P-R4	PxP
20-P-B4	N-KN3	43-BxQRP	B-B7
21-P-KN3	BxN	44-B-B8	K-B
22-PxB	N-B3	45-B-N4ch	Draw agreed
23-P-Q5	NxQP		

KING'S INDIAN DEFENSE

Keres White	Petrosjan Black	Keres White	Petrosjan Black
1-P-Q4	N-KB3	29-R-KR	Q-K3
2-P-QB4	P-KN3	30-R-R4	R-KB
3-N-QB3	B-N2	31-Q-Q	BxB
4-N-B3	P-Q3	32-KPxP	P-B3
5-B-B4	QN-Q2	33-R-K2	Q-B2
6-P-KR3	P-B4	34-PxP	QxKBP
7-P-K3	O-O	35-Q-K	R-Q2
8-B-K2	P-N3	36-R-K6	QxNP
9-O-O	B-N2	37-R-K7	RxR
10-P-Q5	P-QR3	38-QxR	Q-N2
11-P-QR4	N-K	39-QxP	Q-B3
12-Q-Q2	N-K4	40-Q-Q7	Q-B2
13-N-KR2	P-K3	41-Q-Q6	Q-B3
14-QR-Q	Q-K2	42-Q-E7	R-B2
15-Q-B2	R-Q	43-Q-B8ch	R-B
16-Q-N3	Q-B2	44-Q-Q7	Q-B2
17-R-Q2	PxP	45-Q-Q2	Q-K3
18-NxP	BxN	46-R-R	QxP
19-RxB	N-KB3	47-Q-Q6	Q-Q5
20-R(5)-Q	N-B3	48-Q-K6ch	K-R
21-B-B3	KR-K	49-QxKNP	Q-N2
22-N-N4	NxN	50-Q-K4	N-R7
23-PxN	N-N5	51-Q-B4	N-N5
24-R-Q2	Q-K2	52-B-K4	RxP
25-KR-Q	B-K4	53-Q-K6	RxB
26-P-N5	P-QR4	54-QxR	Q-Q2
27-P-N3	Q-K3	55-Q-K5ch	K-N
28-K-N2	Q-K2	56-R-R5	Resigns

KING'S INDIAN DEFENSE

Bronstein White	Gligoric Black	Bronstein White	Gligoric Black
1-P-Q4	N-KB3	30-QR-Q	P-N5
2-P-QB4	P-KN3	31-N-N	B-N4
3-N-QB3	B-N2	32-BxB	RxB
4-P-K4	P-Q3	33-K-B3	R-N2
5-P-KR3	O-O	34-K-K2	R(2)-QB2
6-B-K3	P-K4	35-R-QB	N-Q2
7-P-Q5	QN-Q2	36-RxR	RxR
8-P-KN4	N-B4	37-R-QB	RxR
9-Q-B2	P-B3	38-BxR	N(3)-B4
10-KN-K2	PxP	39-B-K3	K-B2
11-BPxP	Q-R4	40-N-Q2	N-N3
12-N-N3	B-Q2	41-BxN	PxB
13-B-Q2	KR-B	42-K-Q3	K-B3
14-R-QN	Q-Q	43-N-B4	N-Q2
15-Q-Q	P-KR4	44-N-B	K-N4
16-Q-QB	QR-N	45-K-K3	B-R3
17-P-N5	N-K	46-N-R2	K-B3ch
18-P-KR4	P-B3	47-K-K2	B-B5
19-B-K2	N-B2	48-N-N4ch	K-K2
20-K-B	Q-K2	49-K-Q3	K-Q
21-PxP	QxP	50-N-Q6	K-B2
22-QxQ	BxQ	51-N-B7	P-R6
23-P-R5	R-B	52-PxP	PxP
24-PxP	PxP	53-K-B4	K-N3
25-K-N2	B-N2	54-K-N3	K-R4
26-B-K3	P-QN4	55-N-Q6	B-R8
27-QR-QB	N(2)-R3	56-N-B4ch	K-N4
28-N-Q	KR-B	57-N(N4)xP	Resigns.
29-N-B3	P-R5		