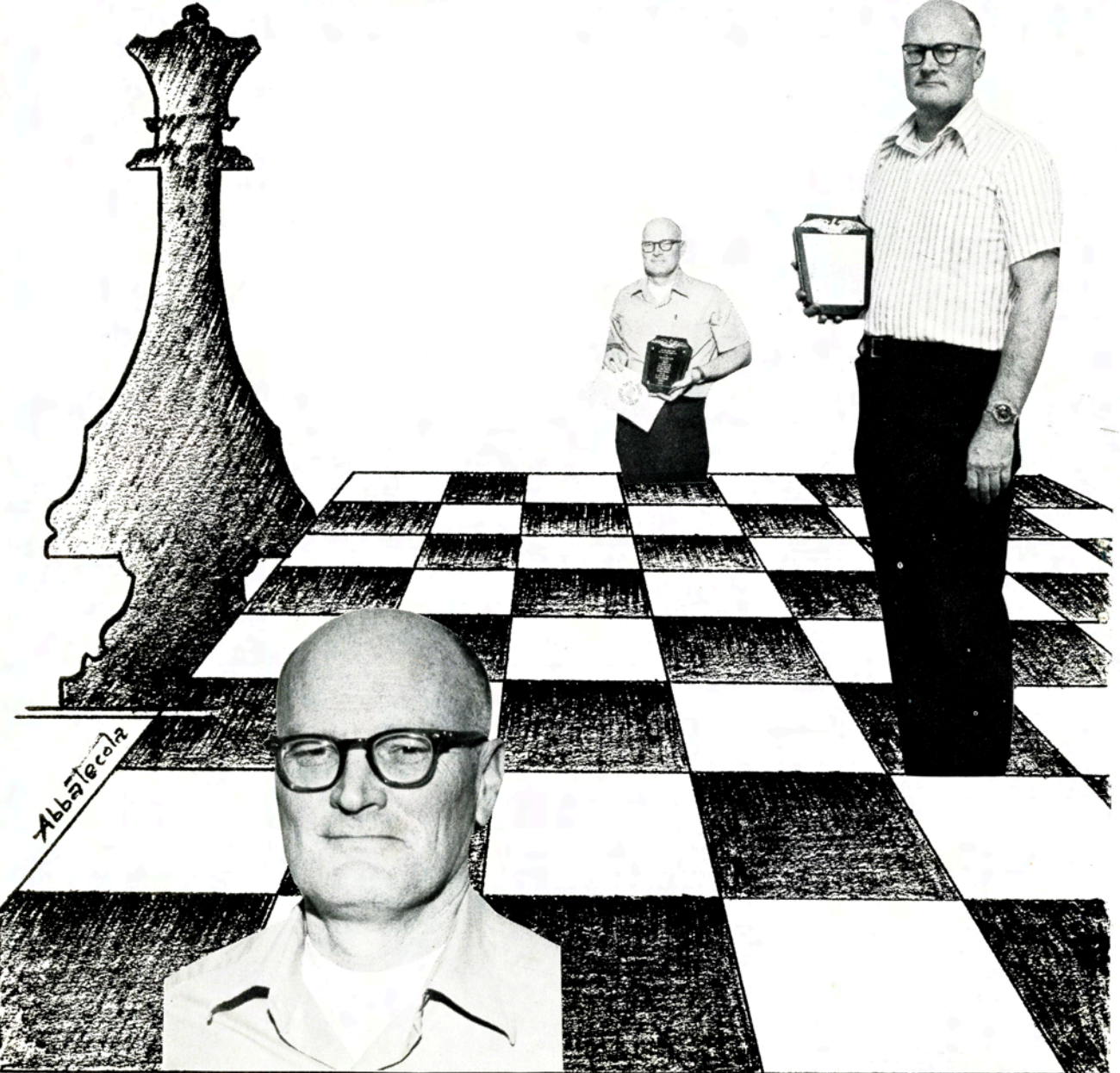


SAN JOSE

CHESS CLUB

Y.M.C.A.
1717 THE ALAMEDA
SAN JOSE, 26, CALIFORNIA

NON - PROFIT ORG.
U.S. POSTAGE
PAID
San Jose, Calif.
Permit No. 1323



Abbatecola

NEW MEMBERS

WELCOME CLUB MEMBERS

Alberto Barocio
 Larry Bean
 Harry Bender & Son
 Ronald Cohen
 Ken Fischer
 Clarence Hopkins
 Ramon Icasiano
 Kelly Johnson

Janis Kalnins
 Donald Krueger
 Lars Laursen
 Jaime Lenz
 Robert Lowrenze
 Brian McGhie
 Vince Mueting
 Darrel Neuman
 Lee Neuman

Alex Ondi
 Edward O'Sullivan
 Mike Perry
 Guy Pupillo
 Barney Reese
 David Strannard
 Steve Washburn
 Dirk Scotter
 K. Harker

BERT MUELLER MADE SJCC LIFE MEMBER

The San Jose Chess Club Board of Directors, Officers, and members wish to express their sincere thanks to Bert Mueller "Mr. San Jose Chess Club Retired" Let it be known that E.H. Mueller has recently been made a Life Member of the San Jose Chess Club for his continuous sincere efforts and dedication to the SJCC since 1942



AGAIN - THANKS BERT

SIMILTANEOUS CHESS EXHIBITION

Mr. Harry O. Radke will conduct a Simultaneous Chess Exhibition on the first Wednesday in September. Harry will start the exhibition at 7:00 sharp. The entry fee is \$1.00. If you win you receive \$2.00 in return. Limited to Thirty players. All entries after Sept. 3 1974 will be at the rate of \$1.50

DON'T MISS THIS ONE

THE Club would like to express its thanks to John Peterson & Terry Alsasua for their fine efforts in recent club simultaneous exhibitions. All profits from their efforts were generously donated to the Bill Adams Memorial Chess Library. Thank you for the fine effort.



Last Club Match With IBM - DRAW

Radke $\frac{1}{2}$, Barr $\frac{1}{2}$; Saadi 0, Schaepher 1 ; Whelan 1, Barlow 0
 Dyer 1, Slutz 0 ; Gadbury $\frac{1}{2}$, Seals $\frac{1}{2}$

Good Neighbors

Taste the very essence of time and immortality - The Egyptian Museum, corner of Park and Naglee next to the Rosicrucian Planetarium - a two minute walk from the San Jose Chess Club.



COVER STORY

By D. Bolling

The PLAQUE, the San Jose Chess Club designed for Chess Communication with the Moscow Central Chess Club was delivered personally by me in May, and now commands a very prominent position in the center of their main Trophy case.

I stayed at the Hotel Ukraina in Moscow, which is quite a distance from the Chess Club. Not wanting to get lost I took a taxi to the Moscow Chess Club and simply walked in. The surprise registered by the Director and the Club Secretary was something to see - after all American tourists just don't drop into the Moscow Chess Club very often.

After a few minutes of introduction (My Russian is pretty sketchy) I finally got the point across as to why my Mother and I were there. The club Director was very friendly and accepted the plaque with pleasure. He then took us on a grand tour of the club facilities.

The Moscow Central Chess Club is a rather drab looking three story building. Once you enter; however, you are in a different world. The building interior consists of rooms and halls with twenty foot ceilings, marble columns and staircases throughout, with many crystal chandeliers. They have a large luxurious room for Masters' only with floor to ceiling mirrors. All the chess tables are large with inlaid boards. The club library appears to be very large and contained in a room approximately twenty by thirty feet, with reading tables, armchairs and lamps.

In the main meeting hall on the second floor I was shown a very large electronic demonstration board surmounted with a large chess

clock that was activated as the moves were displayed by pushing buttons. In another rather large hall I found display cases with Trophies and several antique Chess Sets on Display. Around the walls were many framed caricatures of Spassky, Petrosian, Korchnoi, Dal, Botvinnik, and many others.

All in all I think we did a lot to further understanding between us and also publishing our club a bit. The San Jose Mercury's chess reprosters Cathy Calvert and Mark Johnson have written three articles on the trip, one after Dicks return was a full half page with pictures. While Dick was enroute to Moscow he taught Associated Press Reporter Frank Crepeau the "finer points" of the game. Frank was on his way to cover the Russian chess play-offs. Frank was interested in the clubs international activity and indicated it might make good copy. All newspaper clippings were given to the National Chess magazine "Chess Life & review" and the California State Chess magazine "The Chess Reporter" All this & the fact that this magazine reaches one thousand chess fans every quarter "kind of puts our club on the Map".

AUG. 1974

Circulation - 1,000

WINNERS

THE SAN JOSE CHESS BULLETIN
A QUARTERLY MAGAZINE

"3rd. WEEKENDERS"

APRIL

EDITORTOM LYLE
ASST. ED. .BOB WALKER
COLUMNISTS

JOHN PETERSON
DICK BOLLING
BILL BATES
JOSE CAMPANA
HARRY RADKE
TOM MASER

PHOTOGRAPHY

NICK SIERSEMA
ELDON ANDERSON

PRINTING...BERNIE YORK

BOARD OF DIRECTORS

BRUCE MATZNER
MARK GAZSE
GEORGE DANCHO
TOM LYLE

ORGANIZATIONAL PROGRESS

MEETING- The 2nd. Wed. of
each month. 2nd. fl. @8.00PM

CLUB OFFICERS

PRES. TOM FINN
TREAS. DICK BOLLING
SEC. BILL BATES

THE SAN JOSE CHESS CLUB STAFF.

Asst. Librarian G. Perkins

CHESS LIBRARIAN: JOSE CAMPANA

ASST. LIBRARIAN: MIKE NEEL

PUBLICITY DIR: TOM MASER

TOURNAMENT DIR: BILL BATES

ASST. TOURN. DIR: TOM LYLE

ST. JAMES PARK BRANCH DIR:

DICK BURCHETT

KELLEY GADBURRY

JOHN TRISCHETTI

CLUB SCHEDULER: DAVE LACARIERE

LADDER DIRECTOR: DAN MILLER

SPEED CHESS DIR: GABRIEL SANCHEZ

RECEPTIONIST: LORRAINE HANSEN

THE SAN JOSE CHESS SCHOOL

BORIS SIFF (MASTER)
JOHN PETERSON (EXPERT)
HARRY RADKE (EXPERT)

1st. Harry O. Radke
2nd. Dave Abramson
3rd. Eleuterio Alsasua
4th. Darryl Dyer
5th. Dick Burchett

MAY

1st. R. Sferra
2nd. C. Appleby
3rd. R. Gordon
4th. M. Saadi
5th. S. Thorn

JUNE

1st. Hugh No
2nd. J. Black
3rd. L. Lesyna
4th. R. Sferra
5th. K. Fischer

JULY

FIRST DIVISION

1st. Harry O. Radke
2nd. Eleuterio Alsasua
3rd. Rick Frye
4th. Dr. Ira Pohl
5th. Dave Abramson

SECOND DIVISION

1st. Mike Huber
2nd. Steve Thorn
3rd. Janis Kalnins
4th. Ernest Curto
5th. Idrovo Pedro

Advertisements or Club Information
The San Jose Chess Club
P.O. Box 4424
San Jose, Ca. 95126
Tel. 297-1062 , 298-1717

Russian Chess

Translated by Jose Campana

Quarter final match- 8th and final game. White Karpov, Black Polugaevsky

1. e4, c5 2. Nf3, d6 3. d4, cd 4. Nd4, Nf6 5. Nc3, a6 6. Be2, e5 7. Nb3, Be7
 8. O-O, Be6 9f4, Qc7 10. a4, Nbd7 11. Khl, O-O 12. B e3, ef 13. Rf4, Ne5
 14. a5, Rfe8 15. Bb6, Qd7 16Ra4!, Rac8 (16 Ng6, eg1) 17. Rd4, Qc6 (17. ... , Rc3
 18. bc, Qc6 19. Qel, Nfd7 20. Rb4) 18. Rd2, Bb3 19. cb, Nfd7 20. Bg1, Bg5!?
 21. Rd6 Bf4 22. Rc6, Rgc6 23. b4, Nf6 24. b5, Rce6 25. ba, ba 26. g3!, Bg5
 27. h4, Bh6 28. Bb6(28. g4, g5 29. Be3, Ng6 30. hg, Ne4), Ned7 29. Bc4, Re5
 30. Qb3, Rb8 31 Rf7, Kh8 32. Qc4, Bd2 (32. ... , Nb6 33. ab, Re7 34. e5!, Re5
 35. b7) 33 Bc7, Rc5 34. Qc5, Nc5 35. Bb8, Bc3 36. bc, Nfd4 37. c4, Nd7
 38. Bc7, g6 39. Be6, Nec5 40. Bd7, Nd7 41. Bd7, RESIGNS

VAN HEUSER
 CHESS
 TOURNY

august

AUGUST
 3rd
 WEEKENDER



THE VAN HEUSER TOURNAMENT
 THE SAN JOSE CHESS CLUB AUGUST 3rd WEEKENDER

4-SS, 50/2, YMCA, 1717 THE ALAMEDA
 EF.\$10, IF BY 7/14, \$5 SRS, \$4 JRS.
 SJCC MEM. REQ. (OR ASSOC. FEE \$2)
 LIMITED TO 100 PLAYERS. TROPHIES
 REG. 9-9:30, RDS. 10-3, 10-3.
 AUGUST 17 & 18, 1974

.....
 Pre-Registration Form: Mail to- THE SAN JOSE CHESS CLUB, BOX 4424 SAN JOSE CA.
 (95126)
 NAME.....USCF MEMBER.....USCF RATING.....
 ADDRESS.....CITY.....ZIP CODE.....
 USCF EXPIRATION DATE.....TELEPHONE.....
 CLUB MEMBER.....CLUB ASSOCIATE MEMBER..... CLUB EXPIRATION DATE.....
 ENCLOSED AMOUNT \$..... FOR: ENTRY FEE UNDER 21.....ENTRY FEE 21 & over.....
 FOR USCF MEMBERSHIP (REG.)..... JUNIOR.....
 FOR CLUB MEMBERSHIP (REG.)..... JUNIOR.....
 FOR ASSOCIATE MEMBERSHIP.....
 BIRTHDATE (JUNIORS).....

ATTENTION

PRE-REGISTER NOW: SPREAD THE WORD!!!

DEEP THREAT
by

HARRY RADKE

(Pelican Pandemonium)



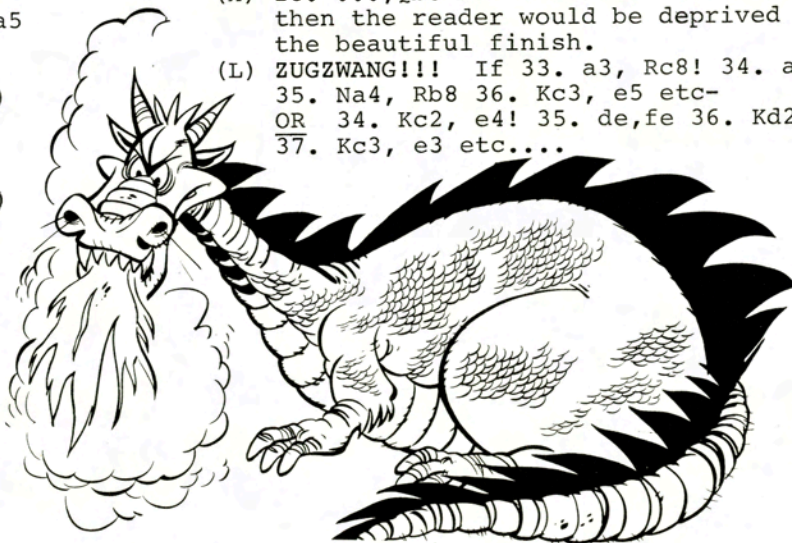
LERA (1973) Rd. #1

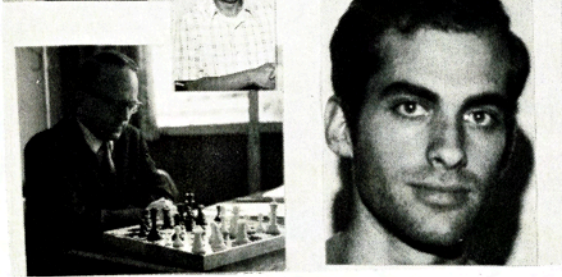
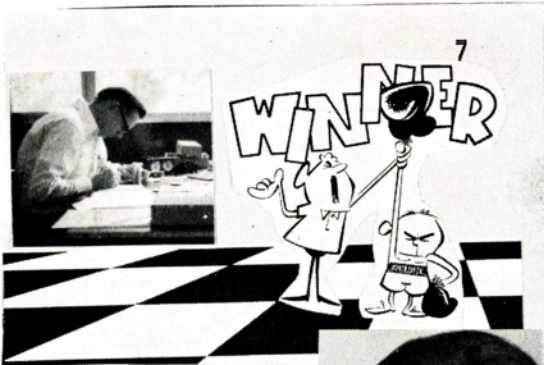
Black - Radke (1966)

White - Bustamante (2170)

1. e4, c5
2. Nf3, Nc6
3. d4, cd
4. Nd4, Nf6
5. Nc3, e5 (a)
6. (b) Ndb5, d6
7. Bg5, a6
8. Bf6, gf6
9. Na3, f5
10. (c) Qh5?!, d5!(d)
11. (e) ed5?, Ba3
12. ba3, Qa5
13. Qf3, Nd4
14. Qd3, f4
15. Qd2, Bf5
16. Bd3, f3!(g)
17. g3, Bd3
18. cd3, Rc8
19. Rc1, Kd7!(h)
20. (i) Kd1, Rc5
21. Ne4, Rc1
22. Qc1, Rc8
23. Qb2, Qa4+
24. Kel, b5
25. (j) Nc3, Qa5
26. Kd2, Ne2
27. Rc1, Nc1
28. Qc1, Kd6(k)
29. Qb2, f5
30. Qb4+, Qb4
31. ab4, h5
32. h4, Rc7!(L)
33. Nd1, Kd5
34. Ne3+, Ke6
35. Nd1, Rd7
36. Kc2, Rd4
37. a3, f4
38. gf, Rf4
39. Kd2, Rh4
40. Ke3, Rf4
41. Nc3, h4
42. Ne4, Kf5
43. Nd6+, Kg4
44. a4, ba
45. RESIGNS

- (a) Pelican Pandemonium
- (b) All other moves give Black at least equality.
- (c) Fisher's move is 10. Bc4, but Gligorich prefers the text.
- (d) Soltis' innovation which refutes whites loth move.
- (e) White is now lost! Gligorich thinks that 11. 000 wins for white, but after 11. ..., Ba3 12. ba3, Nd4! 13. Nd5, Be6 14. Bc4, Rc8 (15. Bb3, OC) (16. Rd3, f6), Black can defend himself & has strong threats of his own.
- (f) 14. ..., Bd7 also wins
- (g) This move keeps white's King Rook from coming into the game, indirectly making Black a Rook up.
- (h) Now Black's other Rook will aid in the attack. White is helpless, as his hunk on h1 is dead meat. 19., 00 is obviously bad as white then has a perpetual check.
- (i) White wants to get out of the annoying pin and move his Knight. 20. 00 loses nicely to 20., Rc3 21. Rc3, Qc3 22. Qc3, Ne2+.
- (j) 25., Rc2 had to be prevented.
- (k) 28., Qb6 was a little better but then the reader would be deprived of the beautiful finish.
- (L) ZUGZWANG!!! If 33. a3, Rc8! 34. a4, ba 35. Na4, Rb8 36. Kc3, e5 etc-
OR 34. Kc2, e4! 35. de, fe 36. Kd2, Rc3 37. Kc3, e3 etc....





L-R, Francisco Sierra, Chuch Whelan
Mitchell Saadi

PICTURES OF WINNERS

Top left. USCF TOURNAMENT DIR. Mr. Bill Bates
 2nd. row L-R. Harry O. Radke, Eleuterio Alsasua, Richard Gordon
 3rd. row L-R. Ken Fischer, Dave Abramson, Darryl Dyer, Charles Appleby
 4th. James Black, Larry Lesyna, Hugh Noland
 5th. Uscf Tournament Dir, (IBM Chess Club- Also guest TD. For The San Jose Chess Club Third Weekenders) Mr. Harold Tweeden, Dick Burchett
 And Bob Sferra from the Palo Alto Chess club.

The Bill Adams Memorial Chess Library
Recent Additions

Donations by Lyman T. Daugherty

1. Practical Chess - George Koltanowski
2. The Basis of Combination in Chess - DuMont
3. My Best Games of Chess - 1908-1923, Alekhin
4. How to Play Chess Endings - Znosko-Borovsky
5. Lasker's Manual of Chess - Emanuel Lasker
6. Principles of Chess - Mason
7. My Chess Career - Capablanca
8. A Guide to Chess Openings - Leonard Barden
9. My best Games of Chess - 1924-1937, Alekhin
10. My Fifty Years of Chess - Frank Marshall
11. Judgement and Planning in Chess - Euwe
12. Chess Secrets - Edward Lasker
13. Championship Chess - M. Botvinnik
14. The Pleasures of Chess - Assiac
15. My System - Nimzovich
16. The Art of Chess - Mason
17. Pitfalls of the Chess Board - E.A. Greig
18. A Memorial to D. J. Densmore - Alain C White
19. Instructive Positions From Master Chess - J. Mieses
20. The Ideas Behind The Chess Openings - Reuben Fine
21. Manual of the End Game - J. Mieses
22. British Chess Masters - F. Reinfeld
23. Pocket Guide to Chess Openings - G. Golombek
24. The Middle Game in Chess - R. Fine
25. Chess Player's Handbook - Staunton
26. Pillsbury Chess Career - Sergent & Watts



Donated by James Black

1. The Great Short Games of the Chess Masters - F. Reinfeld
2. Profile of a prodigy - Frank Brady
3. The Golden Treasury of Chess - Al Horowitz

L.E.R.A. Class Championships 4-27-74

White: James Black 1670 Black: Lester Schonbrun 1796

1. P-K4, P-K4 2. N-KB3, N-KB3 3. P-Q4, PXP 4. P-K5, N-K5 5. QXP, P-Q4
6. PXP EP, NXP 7. B-Q3, N-QB3 8. Q-KB4, B-K3 9. N-QB3, B-K2 10. O-O, Q-Q2
11. B-K3, P-KF3 12. QR-Q1, P-QF3 13. KR-K1, P-KN4 14. Q-QR4, P-KB4 15. N-Q4!, NXXN
16. BXN, P-QN4 17. NXP, O-O 18. RXB, QXR 19. NXBP, Q-KN3 20. NXR, RXN
21. Q-Q7, K-B1 22. R-K1, N-K5 23. BXN, PXB 24. Q-QN7, R-Q1 25. QXP, Q-Q3
26. Q-B5+, K-N1 27. B-B3?*, B-B1 28. B-K5, R-K1 29. P-KR4, Q-K3 30. QXQ, RXQ
31. PXP, PXP 32. B-QB3, R-N3 33. R-K5, K-R2 34. R-KB5, R-N1 35. R-B7+, K-N3
36. R-B6+, K-R4 37. RXP, B-B4 38. R-B5, R-Q1 39. R-K6, R-Q8+ 40. R-K1, R-Q2
41. K-B1, R-B2 42. P-B3, P-N5 43. R-K5+, K-R5 44. RXB, PXP 45. Black's (color) flag falls. * 27. B-K5 wins immediately.

THE 1974 SAN JOSE CHESS CLUB CHAMPIONSHIP

A LOW COST, AUTUMN WEEK NIGHT FUN TOURNAMENT! LIMITED TO 49 PLAYERS! - A MODIFIED ROUND ROBIN, 4*RDS. PER SECTION(PRELIMINARY & FINALS)- OPEN TO CURRENT MEMBERS AND ASSOCIATE MEMBERS ONLY.

WHEN: EVERY WED. NIGHT AT 7:15 PM SHARP! SEALED MOVES AT 10:45 PM SHARP! FIRST ROUND-OCTOBER 2, 1974. COMPLETION ON OR BEFORE DECEMBER 18, 1974 DEPENDING ON # OF ENTRANTS AND/OR INTERRUPTIONS FOR OTHER SCHEDULED CLUB EVENTS.

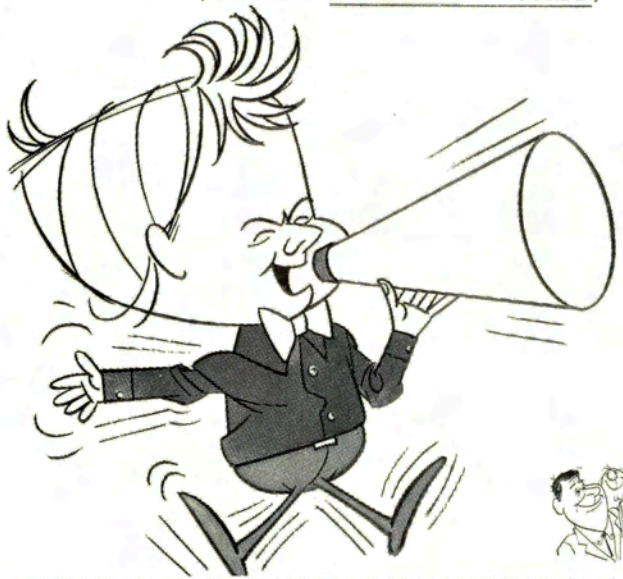
WHERE: YMCA, 1717 THE ALAMEDA - WISE MENS ROOM
FEE: PAYABLE BY SEPTEMBER 25, 1974 AT A CLUB MEETING. ADULTS\$4.00 UNDER 18, \$2.00 (\$1.00 REFUND TO ALL WITHOUT FORFEIT LOSSES).

TIME: 45 moves/90 minutes; 15 MOVES/ 30 min.
PRIZES: CHESS EQUIPMENT (DISTRIBUTION BASED ON PRIZE FUND.)

SPECIAL PRIZE: MOST SURPRISING UPSET!!! (WEAK PLAYER BEATING STRONG PLAYER BASED ON USCF)

TD'S BRUCE MATZNER ASSISTED BY MARK GAZYE AND DICK BOLLING.

* (MEANING AT LEAST 2 ROUNDS)

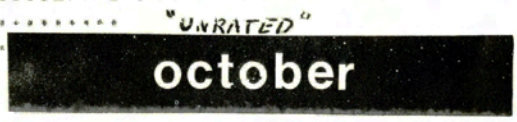


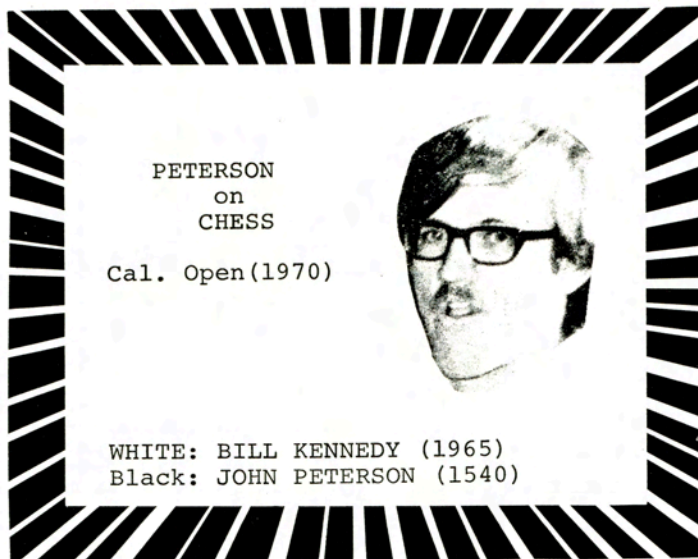
DEFENDING CLUB CHAMPION:
HARRY O. RADKE



.....
Pre-Registration Form: Mail to- THE SAN JOSE CHESS CLUB, BOX 4424 SAN JOSE CA. (95126)
NAME.....USCF MEMBER.....USCF RATING.....
ADDRESS.....CITY.....ZIP CODE.....
.....TELEPHONE.....
CLUB MEMBER.....CLUB ASSOCIATE MEMBER..... CLUB EXPIRATION DATE.....
ENCLOSED AMOUNT \$..... FOR: ENTRY FEE UNDER 21.....ENTRY FEE 21 & over.....

.....
FOR CLUB MEMBERSHIP (REG.)..... JUNIOR.....
FOR ASSOCIATE MEMBERSHIP.....
BIRTHDATE (JUNIORS).....





- | | | |
|---------------------|------------------|------------------|
| 1. e4, c6 | 16. Nf3, O-O(g) | 31. Kal, Rd8 |
| 2. d4, d5 | 17. Kbl, Rfd8 | 32. h4, b6 |
| 3. Nc3, de | 18. Rhg1, Nc4 | 33. g5, hg |
| 4. N:e4, Nd7(a) | 19. B:c4, B:c4 | 34. hg, Rf5 |
| 5. Bc4, Ngf6 | 20. Nfe5, Qa6 | 35. Qh2, Qf4 |
| 6. Ng5, e6 | 21. N:c4, Q:c4 | 36. Qh5(k), Qf3 |
| 7. Qe2, Nb6(b) | 22. g4, Rd5!(h) | 37. Qh2, Qf2 |
| 8. Bb3, h6(c) | 23. Qe3, Rc8 | 38. Qh5, Qf3? |
| 9. N(g5)f3, c5(d) | 24. Rcl, Ne4 | 39. Qh2, |
| 10. Be3, Qc7 | 25. Rgel, Ra5! | |
| 11. dc, B:c5 | 26. Nb4!(i), Nf2 | D R A W N ?? (L) |
| 12. B:c5, Q:c5 | 27. Q:f2, Q:b4 | |
| 13. O-O-O!?(e), Bd7 | 28. Rf1, Rf8 | |
| 14. Ne5, Bb5 | 29. Rg1, Rb5(j) | |
| 15. Nd3(f), Qc6 | 30. c3, Qe4+ | |

N O T E S

- (a) This is a solid, but often passive variation of the CARO-KANN. Black's idea is to play his knight to f6 without weakening his pawn structure.
- (b) On a move like 7., Be7 white would destroy black's position by 8. N:f7! and if 8., Kf7 9. Qe6+, Kg6 10. Bd3+, Kh5 11. Qh3 MATE.
- (c) 8., Q:d4 is just too dangerous. White would play 9. Ngf3, Qc5 (not 9., Bb4+ 10. c3, B:c3+ 11. Kf1! and Black is in trouble.) 10. Ne5 and the threats on f7 are hard to meet.
- (d) A key move. This thematic central thrust gives Black equality. 9., a5 is also popular today, but I prefer to play in the center.
- (e) With this move white puts his king on the same side of the board where black has active play. But white wants a complicated game where he feels he will be able to beat his much lower rated opponent.
- (f) Either this or the rather awkward 15. Qel

- (g) Black wants to fight! With the kings castled on opposite wings a fierce battle often erupts as both sides try to attack.
- (h) This move temporarily halts white's intended g5 and also brings the rook to a position where it can aid in Black's attack. Defending and attacking at once.
- (i) Any other move loses immediately. If 26. b3, Nc3+ 27. Kb2, R:a2 MATE, or 26. a3, R:a3! 27. ba, Nc3+ 28.Kb2,Qa2 MATE. With 26. Nb4 White only gives up a pawn.
- (j) Trying to induce a weakness in White's King position. Besides, maybe he wont see it!
- (k) White now has nasty threats of 37. Rh1 followed by trouble for me! I was so worried about this possibility that fear drove me to force a draw. Being a pawn down and with a lost position my opponent was only too happy to oblige.
- (L) In this position Black can win by 39., Qf2 40. Qh5 (this is the same position that occurred after White's 38th move), 44. Rh1, Q:c3+ 45. Kbl, g6 and Black will soon play Rd2 or trade Queens with an easily won end game. If 41. b3,Rd2 and White's position is hopeless. Yet, I was so worried about Rh1 that I over-looked my own attacking chances. Don't let this happen to YOU!!!!.

1974 US JUNIOR PRODUCES CO-CHAMPIONS
By Martin E. Morrison, USCF Technical Director

Larry Christiansen, 18, of Riverside, California, and Peter J. Winston, 16, of New York City, share the title of US Junior Champion from their top standing in the Ninth Annual Invitational United States Junior Chess Championship. The event was held from 25 June to 1 July in Philadelphia under the sponsorship of the United States Chess Federation and under the direction of National Tournament Director Leroy Dubeck.

As a result of his placement, Christiansen receives an all-expenses-paid trip to play in the United States Open Championship in New York City in August and an opportunity to participate in an international tournament before the end of 1974. Winston receives an all-expenses-paid trip to Manila to represent the United States in the World Junior Chess Championship in August. In addition, he is assured of playing in the East Coast Qualifying Tournament for one of the places in a USCF International Tournament this autumn.

The eight participants in the event, who must not have reached their twentieth birthday, were invited on the basis of their USCF national ratings. This year, for only the second time in its history, the tournament consisted entirely of National Masters. Five states, California, Iowa, Maryland, New York, and Pennsylvania, were represented in this year's competition.

The USCF junior membership numbers 24,000, more than one-third of the total national membership.

Place	Player	1	2	3	4	5	6	7	8	Score
1-2	Larry Christiansen	x	½	1	½	½	1	1	1	5½-1½
1-2	Peter Winston	½	x	½	1	1	1	½	1	5½-1½
3	Jon Frankle	0	½	x	0	1	0	1	1	3½-3½
4-6	David Berry	½	0	1	x	0	1	0	½	3 -4
4-6	Mark Diesen	½	0	0	1	x	0	1	½	3 -4
4-6	David Striker	0	0	1	0	1	x	1	0	3 -4
7	Craig Barnes	0	½	0	1	0	0	x	1	2½-2½
8	Michael Pastor	0	0	0	½	½	1	0	x	2 -5

credit the US Chess Federation as source.



The Staunton design was certainly not the first to use the horse as a symbol for the Knight. Mohammedan armies carried the game out of Persia across Africa into Spain. The Mohammedan religion forbade the use of carvings resembling animals or men and as a result the symbolic form of the Knight was a two pronged-crutch like piece the design of which indicated the move of the Knight. The Knight move was the same then as now.

Upon introduction of the game into Spain by the Moors, the horse symbol for Knight was inevitable. The Spanish Knight was somewhat heavy and awkward but it did influence the mid 18th century Maltese design from which came Staunton's graceful and well balanced carving.

It is interesting to note that the knight was in Medieval times a very powerful piece. The Knight in Feudal society was the Kings right hand man- displayed before the serfs and lower classes therefore the strength of the Knight on the chess board was parallel. The Queens and Bishops moved short distances then instead of the long jumps they now command. The only piece more powerful than the Knight was the Rook. (More will be said on the Rook in later issues) The Knights with armor-Battle gear- and a well appointed charger were a Natural for the Medieval artisan wood carver. The elaboration of the early chessmen led to a slow and thoughtful contemplation of the pieces during a game and were somewhat distracting from the game's theme. Staunton's main concern was to create beauty through simplicity and enhance the quality of the tactics & Strategy.

Through the genius of the unknown artist commissioned by Howard Staunton- the Knight retains its distinctive character but yet it somehow blends beautifully into the overall concept of the chessmen and board as unity of thought in action.

USA TAKES BRONZE MEDAL IN CHESS OLYMPIAD

With a score of 36½ points, the USA's team in the XXIst Chess Olympic Games (World Team Championship) took third place, the first time since 1937 that the United States has finished in the top three places without the participation of Robert Fischer. The medal-winning team consisted of International Grandmasters Lubomir Kavalek, Robert Byrne, Walter S. Browne, Samuel Reshevsky, William Lombardy, and International Master James E. Tarjan.

Tarjan won an individual gold medal as the highest-scoring No. 6 team member in the entire Olympiad.

1974 WORLD OPEN- New York, July 3-7

Peters-Larsen, round 8: 1 e4 c5, 2 Nf3 e6, 3 d4 cd, 4 Nd4 Nf6, 5 Nc3 d6, 6 Be2 Nbd7, 7 f4 a6, 8 a4 Qc7, 9 O-O b6, 10 Bf3 Bb7, 11 Kh1 Be7, 12 Qe1 O-O, 13 g4 Qc4, 14 Be3 d5, 15 e5 Ne4, 16 Ne4 de, 17 Bg2 Rac8, 18 Qg3 Qb4, 19 f5 Qb2, 20 fe fe, 21 Rfb1 Qc3, 22 Ne6 Rf3, 23 Bf3 ef, 24 Bf2 Ne5, 25 Kgl Ng6, 26 g5 a5, 27 Qg4 Re8, 28 Nd4 Bc5, 29 Rel Rf8, 30 Rad1 Nf4, 31 Kh1 Bd4, 32 Qg3 Ne2, 33 Qh4 Rf4, 34 Qh5 g6, 35 Qh3 Rf8, 36 Rf1 Bc8, 37 Qh4 Bf2, 38 Qf2 Qc2, 39 Qb6 Bh3, 40 Rb1 Bg2 mate 0-1

Browne-Celorio, round 9: 1 e4 e6, 2 d4 d5, 3 Nd2 Nc6, 4 Ngf3 Nf6, 5 e5 Nd7, 6 Be2 f6, 7 ef Nf6, 8 Nf1 Bd6, 9 Bg5 e5, 10 Ne3 Be6, 11 Bb5 e4, 12 Ne5 O-O, 13 Nc6 Qe8, 14 Na7 Qg6, 15 Bh4 Ng4, 16 Ng4 Bg4, 17 Qd2 Ra7, 18 Qg5 Qe6, 19 h3 Bf5, 20 Be2 h6, 21 Qe3 Qg6, 22 O-O c6, 23 Bg3 Be7, 24 Be5 h5, 25 Qg3 Qh6, 26 Bh5 Bg5, 27 Bg4 Bh4, 28 Qe3 Bg5, 29 f4 ef, 30 Qf3 g6, 31 Kh2 b5, 32 Bf5 gf, 33 Bf4 Bf4, 34 Qf4 Qf4, 35 Rf4 Re8, 36 Rf2 b4, 37 a4 Re4, 38 c3 f4, 39 a5 bc, 40 bc Re8, 41 Ra3 Re4, 42 Ral Re3, 43 Rf3 Rf3, 44 gf Kf7, 45 h4 Ke6, 46 Kh3 resigns 1-0

Powell-Regan, round 8: 1 e4 e5, 2 Nf3 Nc6, 3 Bb5 Nd4, 4 Nd4 ed, 5 O-O c6, 6 Bc4 Nf6, 7 Rel d6, 8 c3 Ng4, 9 Qe2 b5, 10 Bd3 Qf6, 11 e5 Qh4, 12 ed Be6, 13 h3 Kd7, 14 Be4 Bd6, 15 d3 f5, 16 Bf3 Rae8, 17 Nd2 Bd5, 18 Ne4 Bh2, 19 Kh1 Nf2, 20 Kh2 fe, 21 de Ne4, 22 cd Qg3, 23 Kgl Nf2, 24 Be3 Nh3, 25 Kh1 Nf4, 26 Qf2 Qf2, 27 Bf2 Bf3, 28 gf Nd3, 29 Rf1 Re2, 30 Bg3 Rhe8, 31 b3 Re6, 32 d5 Rh6, 33 Kgl Rg6, 34 dc Kc6, resigns 0-1. A fine win by 14-year old Regan over an opponent rated 2301!

Boskovic-Gilden, round 8: 1 e4 e6, 2 d4 d5, 3 Nc3 Bb4, 4 e5 c5, 5 Qg4 Ne7, 6 dc Bc3, 7 bc Nf5, 8 Nf3 Na5, 9 Bd2 Qc5, 10 Bd3 O-O, 11 Qh3 f6, 12 g4 fe, 13 Ne5 Qc7, 14 f4 Nh6, 15 O-O-O Nc6, 16 Rdel Bd7, 17 Nd7 Qd7, 18 Rhgl Rae8, 19 f5 e5, 20 Bh6 gh, 21 Qh6 e4, 22 Bb5 d4, 23 Bc4 Kh8, 24 Re4 dc, 25 Re8 Qe8, 26 f6 Rf7, 27 Bf7 Qf7, 28 Rel Kg8, 29 Re8 resigns 1-0

Gutierrez-Pedorowicz, round 3: 1 e4 c5, 2 Nf3 d6, 3 d4 cd, 4 Nd4 Nf6, 5 Nc3 Nc6, 6 Bc4 e6, 7 Bb3 Be7, 8 Be3 a6, 9 Qe2 O-O, 10 O-O-O Qc7, 11 g4 Nd7, 12 Rhgl Nc5, 13 g5 b5, 14 Qh5 Bd7, 15 Rg3 b4, 16 Rh3 h6, 17 Rgl Nb3, 18 ab Be8, 19 gh g6, 20 h7 Kh8, 21 Bh6 Bd7, 22 Rg6 fg, 23 Qg6 Bf6, 24 Rg3 resigns 1-0

Kaplan-Gutierrez, round 7: 1 d4 Nf6, 2 c4 e6, 3 Nf3 c5, 4 d5 ed, 5 cd g6, 6 Nc3 d6, 7 e4 Bg7, 8 Be2 O-O, 9 O-O Re8, 10 Nd2 Na6, 11 f3 Nc7, 12 a4 b6, 13 Kh1 Rb8, 14 Nc4 Ba6, 15 Rb1 Qd7, 16 Bg5 Bc4, 17 Bc4 a6, 18 b4 b5, 19 Bd3 c4, 20 Bc2 h6, 21 Be3 Qe7, 22 Qd2 Kh7, 23 a5 Nh5, 24 g4 Qe5, 25 Nd1 Nf6, 26 Bf4 Qe7, 27 Nf2 Nd7, 28 Bg3 Ne5, 29 Kg2 Rbc8, 30 Rbel Qf6, 31 f4 Nd7, 32 e5 de, 33 Ne4 Qd8, 34 f5 Nf6, 35 d6 Ncd5, 36 fg fg, 37 Nf6 Nf6, 38 Be5 Rf8, 39 Bg6 Kg6, 40 Qc2 Kf7, 41 Bf6 resigns 1-0

Williams-Kaplan, round 9: 1 e4 c5, 2 Nf3 e6, 3 d4 cd, 4 Nd4 Nf6, 5 Nc3 d6, 6 Be2 a6, 7 f4 Qc7, 8 O-O Nc6, 9 Be3 Be7, 10 Qe1 O-O, 11 Qg3 Nd4, 12 Bd4 b5, 13 a3 Bb7, 14 Rael Rad8, 15 Kh1 g6, 16 Bd3 Nd7, 17 f5 Bf6, 18 Bf6 Nf6, 19 Qh4 Kg7, 20 Re3 Rde8, 21 Rh3 ef, 22 Rf5 gf, 23 Qg5 resigns 1-0

.....

Practical Chess Quote

" If they offer you a pawn in the opening take it-
but always give it back."

Boris Siff, Chess Master

.....

NEWS FROM THE IBM CHESS CLUB

By Harold Tweeden IBM-CC TD.



Harold Tweeden

The IBM Chess Club Spring Tournament was won by Felix Schlaepfer with a perfect score of five points. The class C and B prize was won by John Barlow with three points, and the class D/E/UNR. was won by Ted Hashiguchi with two points.

IBM research challenged the remainder of the IBM organization to a series of noontime matches. The "REMAINDER" won the first two matches $4\frac{1}{2} - 1\frac{1}{2}$, and $4\frac{1}{2} - 2\frac{1}{2}$. The series will continue for the rest of the Summer or until Research has had enough...

.....

CLASSIFIED ADS
CREED OF PEACE*A Practical Approach*

I am guilty of war when I proudly exercise my intelligence to the disadvantage of my fellow man.

I am guilty of war when I distort others' opinions which differ from my own.

I am guilty of war when I show disregard for the rights and properties of others.

I am guilty of war when I covet what another has honestly acquired.

I am guilty of war when I seek to maintain my superiority of position by depriving others of their opportunity of advancement.

I am guilty of war if I imagine my kin and myself to be a privileged people.

I am guilty of war if I believe a heritage entitles me to monopolize resources of nature.

I am guilty of war when I believe other people must think and live as I do.

I am guilty of war when I make success in life solely dependent upon power, fame, and riches.

I am guilty of war when I think the minds of people should be regulated by force, rather than by reason.

I am guilty of war when I believe the God I conceive is the one others must accept.

I am guilty of war when I think that a land of a man's birth must necessarily be the place of his livelihood.

—ANON.

The Buddy Program

One man,
One boy...
Two lives
enriched



Be a Buddy to a fatherless boy. No experience necessary, just a little time and the desire to be a special friend to a lonely boy.
Give of yourself and grow.

For more information call or visit
(408) 244-5252
2175 The Alameda. San Jose

GIFT BOOK COUPON

SCRIBE T. Y. E.
ROSIKRUJIAN ORDER
San Jose, California 95191

Please send me without obligation a gift copy of *The Mastery of Life*. I am interested in knowing how I may study these truths.

NAME.....

ADDRESS.....

ZIP CODE.....

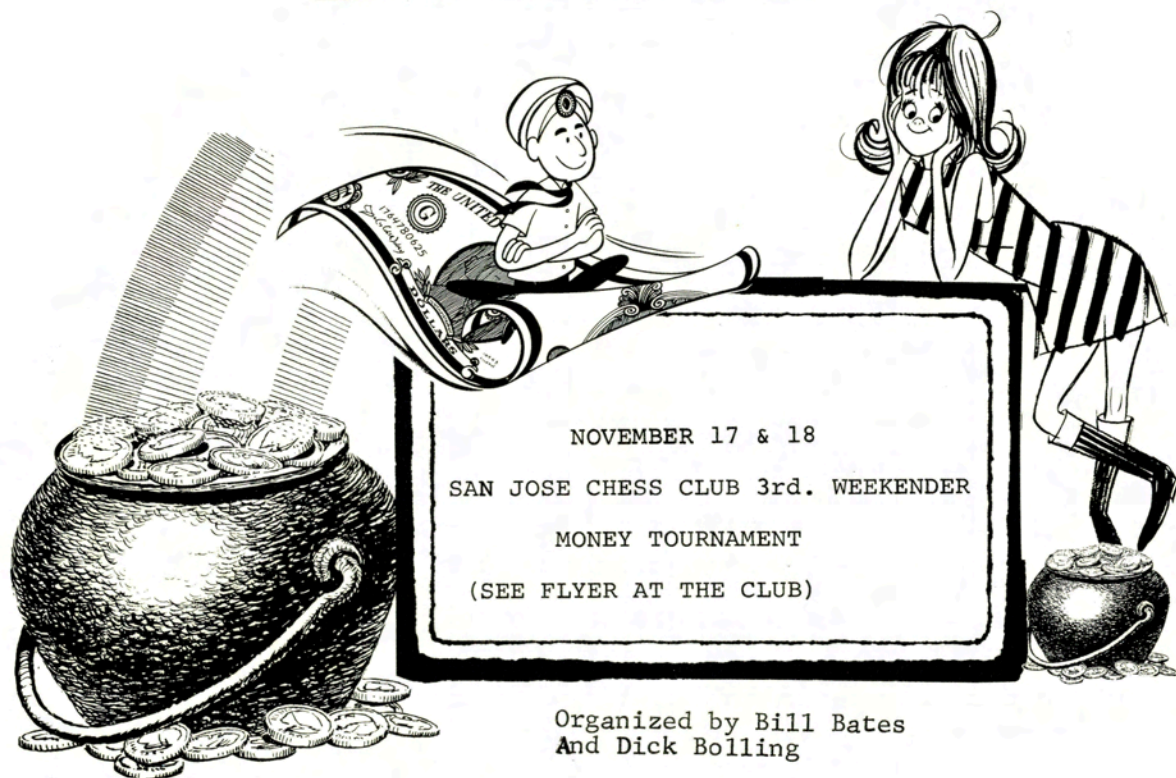
THREE GAMES FROM THE NATIONAL OPEN

White: Grandmaster Florin Gheorghiu. Black: USCF Expert David Berry, First Expert Winner. Grünfeld Defense. 1 d4 Nf6 2 c4 g6 3 Nc3 d5 4 Bf4 Bg7 5 e3 c5 6 dc Qa5 7 cd Nd5 8 Qd5 Bc3 9 bc Qc3 10 Ke2 Qal 11 Be5 Qb1 12 Bh8 Be6 13 Qd3 Qa2 14 Kf3 f6 15 Bg7 Nc6 16 Kg3 Rd8 17 Qe4 Ne5 18 h3 Rd2 19 Qb7 Rf2 20 Qb8 Kf6 21 Qf8++.

White: National Master Eric D. Bone. Black: Wayne Marvin (1852). Sicilian Defense. 1 e4 c5 2 Nf3 a6 3 c3 d5 4 ed Qd5 5 d4 Nf6 6 Be2 cd 7 cd Bg4 8 Nc3 Qa5 9 Qb3 b5 10 Ng5 e6 11 Bg4 Ng4 12 Ne6 b4 13 Ne4 Qf5 14 Ng7 resigns.

White: Frank D. Berry (1774). Black: USCF Expert William B. Abbott. Ruy Lopez. 1 e4 e5 2 Nf3 Nc6 3 Bb5 a6 4 Bc6 dc 5 0-0 f6 6 d4 Bg4 7 h3 Bf3 8 Qf3 Qd4 9 Rd1 Qc4 10 Qg4 Qf7 11 Nc3 Bd6 12 Be3 g6 13 Na4 f5 14 ef gf 15 Qe2 0-0-0 16 Bc5 Nf6 17 Qe3 Rhg8 18 Bd6 cd 19 Qa7 Qg6 20 g3 f4 21 Rd3 Qe4 22 Rb3 c5 23 Nc3 Qc6 24 Rb6 Qf3 25 Rd1 fg 26 Qa8 Kc7 27 Nd5 Qd5 28 Qd8 Rd8 29 Rd5 gf 30 resigns.

november



NOVEMBER 17 & 18

SAN JOSE CHESS CLUB 3rd. WEEKENDER

MONEY TOURNAMENT

(SEE FLYER AT THE CLUB)

Organized by Bill Bates
And Dick Bolling

SAN JOSE CHESS CLUB
YMCA 1717 The Alameda

