

# The GAMBIT



OFFICIAL PUBLICATION OF THE MONTEREY PENINSULA CHESS CLUB

P.O. BOX 261, MONTEREY, CALIFORNIA 93940

SPONSORED BY THE MONTEREY RECREATION DEPARTMENT

Vol 2 No 2

February 1971

Bill Kennedy

Editor

372 7496

## CLUB OFFICERS

Chuck Nystrom	President	624 5531
Sam Gales	Vice-president	394 6472
Bill Kennedy	Secretary-treasurer	372 7496
Ron Atkinson	Tournament Director	624 6059
Frank Sutor	Team Captain	372 4987
Col. C. J. Daly	USCF Regional Vice-president	624 7583
Ted Yudacufski	USCF Regional Director	372 9790
Bill Kennedy	USCF Regional Director	372 7496

Casa Alvarado Chess Center, Box 1308, Monterey, Calif 93940 372 9790

The Monterey Peninsula Chess Club meets each Thursday evening at the Casa Alvarado Chess Center, 467 Alvarado St., Monterey



## TOURNAMENT CALENDAR

Winter rating tournament now in progress - Ron Atkinson - Director

Cherry Tree Open USCF Feb 20 - 21 - Ted Yudacufski - Director

Spring Rating Tournament - USCF - April & May - more details later

Monterey International Open - June 26-27 Hotel San Carlos, Monterey

Summer rating tournament - USCF - July & August - more details later

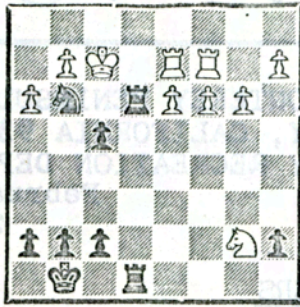
Club Championship Tournament Round robin - Sign up now for this T.

You can improve your game by playing in your Club's Chess Tournaments



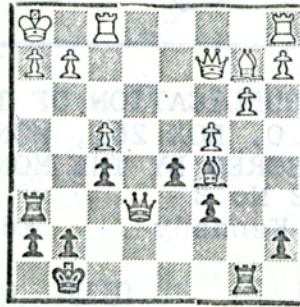
ATTENTION! - POSTAL CHESS PLAYERS - Chess players in the service stationed in the United States and overseas want to play a game with YOU! Join the USO - All Service Postal Chess Club! Non - service players WELCOME! YOU CAN'T BEAT THE PRICE! (monthly subscription to "KING'S KORNER" chess magazine included). Send \$2 and state your class (A) (B) (C) (D) to: Major Robert A. Karch, Director, USO-ASPC Club, 536-22-9023, USARPACINTS, APO San Francisco 96331

## (The) Announce the Mate!



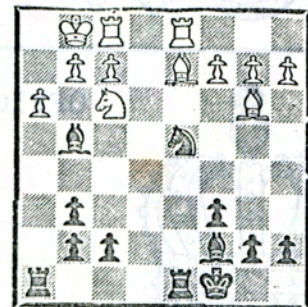
Black

4. Black mates in ..... moves.



Black

5. Black mates in ..... moves.



Black

6. Black mates in ..... moves.

Continuing our discussion to help the novice chess player understand what to watch for during the progress of the game:

The beginner would do well to record ALL of his games, to gain valuable practice in this requirement for tournament play and to be able to go over his games to see the mistakes and lost opportunities made by both players. Certainly you will learn to look before you move.

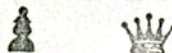
During the game occasions can arise when you depart from a plan you are executing because you can secure a bigger gain another way. This could be when a combination presents itself. A combination can be defined as a series of forcible moves, which often can be calculated exactly in advance, returning an advantage of some kind to the executor. Either your ingenuity or a slip by the opponent may produce the possibility of a combination. So before you continue with your plan you must determine if any good combination is "on." For examples of these, consult any of a number of books devoted to the subject. Learn what to look for, how and when to apply the winning touch.

Soon you will appreciate that the pawns and pieces vary in value in different positions. Remember that an active piece is much better than an inactive one. A piece is worth only the actual work it can do, whatever its normal theoretical value. Thus a Bishop shut in by Pawns is weak; a Knight in an advanced post which the opponent cannot dislodge may be as good as a Rook; a Rook without open lines to use is generally not pulling his weight and would be inferior to, say, a Bishop with a lot of scope.

The sacrifice of material for a mating attack or positional advantage is another division of chess thought. (See above problems.) These and other subjects will weld into a composite whole in your mind - with practice - and produce your particular style. The "combinative" player is partial to the open game while the "positional" player prefers to pile up small advantages. One of these styles will fit your game.

In the next issue of the GAMBIT we will present some simple examples that show these winning ideas being used in practical play.

Meantime - get in some practice - and record your games.



Like the Pawn said, when it moved to B8, "I feel like a Queen."

# WIN A CHESS BOOK !!!

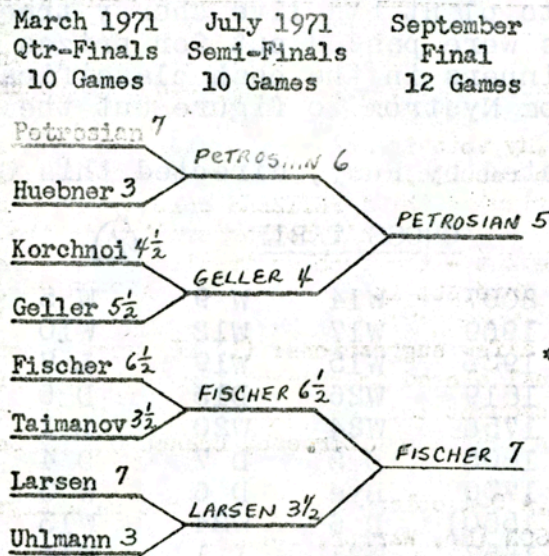
PICK THE WINNERS IN THE CANDIDATE MATCHES!

TWO TOP WINNERS TO RECEIVE A FREE CHESS BOOK!!

**RULES:** Contest open to all paid up MPCC members. One entry per MPCC member only. All entries must be received not later than March 15, 1971. Entrant who predicts the most winners in the matches will be declared winner. In case of tie, entry picking the closest final scores of all matches will win. Decision of the judges will be final. **GOOD LUCK!**  
**SEND ENTRIES TO:** Chess Contest, Monterey Peninsula Chess Club, P.O. Box 261, Monterey, California 93940.

**NOTE:** Fill in name and score of each player.

**SAMPLE ENTRY BELOW:**

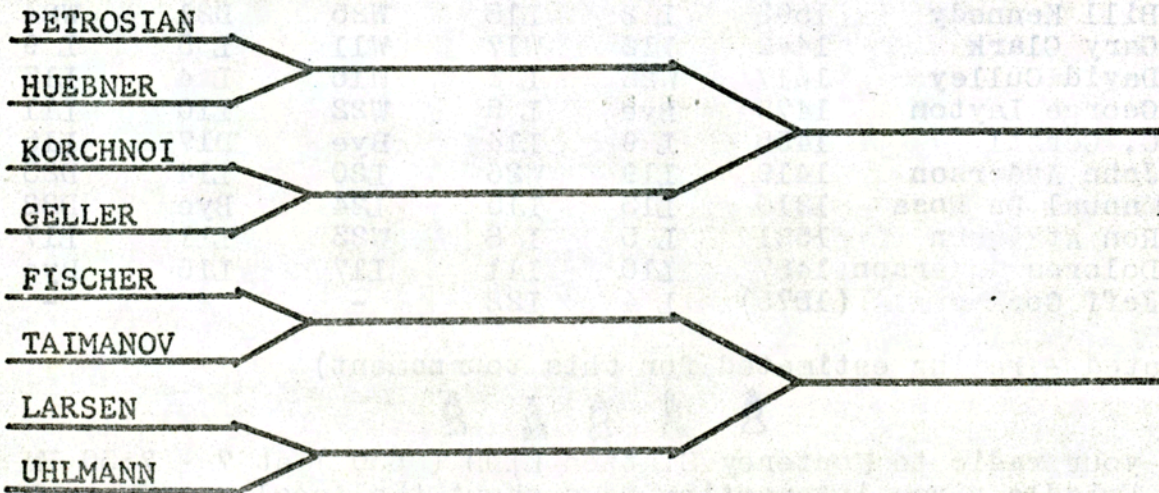


\*\*\*\*\*

March - April 1971  
Quarter - Finals  
10 Games

July 1971  
Semi - Finals  
10 Games

September 1971  
Final  
12 Games





EWELL DECLARED WINNER OF "CHERRY-TREE" OPEN.

Mike Ewell, USCF Expert, lost to Bill Gray, who lost to M. Bedford, who lost to Bob Wornick, who lost to Dan Maxwell and drew with R. Bustamante and Chuck Wagner. David Sewell, lost to Ewell, the only 'top' player he was paired with in this tournament. Bustamante did not lose any games.

All of this gave four wins and one loss to, in tie-break order, Ewell, Gray Bedford, Maxwell, and D. Sewell. Bustamante with three draws and two wins ended with 3½ points. Wornick, Wagner, Wren, Oakes and Mills each ended with three points.

The Casa's Washington's Birthday Cherry Tree Open gathered 26 woodpushers for this annual celebration. Despite the Federal ruling that George's Birthday would be celebrated a week in advance, the tournament promoters decided to keep the tournament as close to the 22nd as they could. Held at the Casa Alvarado Chess Center on February 20 and 21 all seemed to really enjoy the action and many took home 'cherry' prizes, with Ewell now hunting a place to plant his live cherry tree. Cherry candy, ice cream pie and other goodies were passed out for prizes in all sorts of situations. There were so many winners in the cash classifications that Ted had to borrow a computer from Nystrom to figure out the split.

Ted Yudacufski, assisted by Ruby, directed this USCF rated tournament.

 CROSS TABLE 

1. Mike Ewell	2007	W14	W 9	W 5	L 2	W10	4
2. Bill Gray	1969	W17	W12	W10	W 1	L 3	4
3. M. Bedford	1936	W15	W19	L 7	W 9	W 2	4
4. Dan Maxwell	1819	W26	D13	D 6	W19	W 7	4
5. David Sewell	1756	W24	W20	L 1	W18	W 8	4
6. Dick Bustamante	1805	D 8	D 7	D 4	W15	W12	3½
7. Bob Wornick	1730	Bye	D 6	W 3	D 8	L 4	3
8. Chuck Wagner	(1550)	D 6	W24	W13	D 7	L 5	3
9. Greg Wren	1657	W21	L 1	W14	L 3	W18	3
10. George Oakes	1720	W25	W16	L 2	W20	L 1	3
11. Bradley Mills	1640	L16	W25	L18	W24	W20	3
12. Wayne Sewell	(1675)	W18	L 2	D15	W13	L 6	2½
13. Virgil Pope	1601	W23	D 4	L 8	L12	W19	2½
14. Cal Yanaka	1598	L 1	W21	L 9	W22	D16	2½
15. Ken Roberson	1589	L 3	W23	D12	L 6	W21	2½
16. M. Gash	1438	W11	L10	L19	W25	D14	2½
17. Bill Kennedy	1593	L 2	L18	W25	D21	W24	2½
18. Gary Clark	1442	L12	W17	W11	L 5	L 9	2
19. David Culley	1617	W22	L 3	W16	L 4	L13	2
20. George Layton	1475	Bye	L 5	W22	L10	L11	2
21. G. Gerstl	1455	L 9	L14	Bye	D17	L15	1½
22. John Anderson	1419	L19	W26	L20	L14	D23	1½
23. Manual Da Rosa	1210	L13	L15	L24	Bye	D22	1½
24. Ron Atkinson	1521	L 5	L 8	W23	L11	L17	1
25. Dolores Anderson	1487	L10	L11	L17	L16	Bye	1
26. Jeff Gorgas	(1575)	L 4	L22	-	-	-	0

(unrated - rating estimated for this tournament)



Tune your radio to Monterey Station KIDD ( 630 ) at 7 - 7:30 PM Fridays. Mike Friddle gives interesting news about the local campus scene on the Monterey Explorer's program. Mike has also helped his Spanish Class earn a trip to Mexico over Easter week-end by his super salesmanship.



THE 1971 GRAND PRIX  
CLASS CHAMPIONSHIPS  
(USCF REGION VIII)



DATE: Saturday and Sunday, 27 and 28 March 1971.

SITE: Del Webb Town House, 2220 Tulare Street, Fresno, California.

CO-SPONSORS: United States Chess Federation (USCF), Central California Chess Association (CCCA), and Everyman Athletic Club.

ELIGIBILITY: Open to all who are or will become members of the USCF. Players who cannot produce an unexpired USCF membership card upon registration will be required to join in order to play. USCF memberships can be obtained for the tournament at a 20% discount: \$4.00 (under 21), \$8.00 (21 and over).

TYPE OF TOURNAMENT: Four round Swiss System in three divisions: Master/Expert/Class A, Class B, Classes C/D/E. Unrated players will be given a provisional rating for the purpose of classifying them for the tournament. A player may play in a division above his rating.

PRIZES: \* \* \* \$ 1 5 0 0 . 0 0 P R I Z E F U N D \* \* \*

	1ST OVERALL \$300.00		2ND OVERALL \$100.00	
1st Expert	\$150.00	2nd Expert	\$50.00	3rd Expert \$25.00
1st A	\$150.00	2nd A	\$50.00	3rd A \$25.00
1st B	\$150.00	2nd B	\$50.00	3rd B \$25.00
1st C	\$150.00	2nd C	\$50.00	3rd C \$25.00
				1st D \$100.00
				1st E \$100.00

(Prizes are based on approximately 125 entries and may be increased or decreased depending upon the total number of entries.)

ENTRY FEE: Only \$15.00.

SCHEDULE OF PLAY AND TIME CONTROL FOR MASTER/EXPERT/CLASS A DIVISION:

(Saturday) Round I 11:30 a.m., Round II 5:30 p.m., (Sunday) Round III 9:00 a.m., Round IV 3:00 p.m. All rounds at 40 moves per two hours, 15 moves per half hour thereafter.

SCHEDULE OF PLAY AND TIME CONTROL FOR CLASS B DIVISION: (Saturday) Round I 11:30 a.m., Round II 5:45 p.m., (Sunday) Round III 9:45 a.m., Round IV 3:15 p.m. All rounds at 45 moves per two hours, 15 moves per half hour thereafter.

SCHEDULE OF PLAY AND TIME CONTROL FOR CLASSES C/D/E DIVISION: (Saturday) Round I 11:30 a.m., Round II 4:30 p.m., (Sunday) Round III 9:30 a.m., Round IV 2:45 p.m. All rounds at 40 moves per one and one-half hours, 15 moves per half hour thereafter.

TOURNAMENT DIRECTORS: Martin E. Morrison, Member, USCF Tournament Director Certification Committee, Accredited California State Chess Federation Tournament Director, columnist and author on chess laws and tournament direction; and Elwin C. Meyers, Central California Chess Association Tournament Director. The tournament directors will be the final authority on matters relating to the organization of the tournament.

CCCA CALIFORNIA STATE CHESS CHAMPIONSHIP QUALIFYING POINTS: Those participants in the Master/Expert/Class A Division who are or will become members of the California State Chess Federation (CSCF) will automatically receive Qualifying Points toward becoming the CCCA's Qualifier in the California State Chess Championship. CSCF memberships can be obtained for the tournament at \$2.50 (under 21), \$5.00 (21 and over).

REGISTRATION: Mail entry fee before Sunday, 21 March, with your full name, address, telephone number, and the division in which you expect to play to Martin E. Morrison, P. O. Box 1622, Oakland, CA 94604; telephone: (415) 582-1973. Registration will also be taken on Saturday, 27 March, at the tournament site, from 9:30 to 10:45 a.m., but advance registration expedites and ensures the accuracy of your registration. Fees will be returned to mail registrants subsequently unable to attend. Make checks payable to Martin E. Morrison.

INQUIRIES: To Martin E. Morrison (address and telephone number above).

EQUIPMENT: None supplied at the tournament; players must bring their own.

TRANSPORTATION FROM THE SAN FRANCISCO BAY AREA: Those driving from this area to the tournament who would like to share expenses with a passenger and those needing a ride and are willing to share expenses should contact Martin E. Morrison, who also has details about bus transportation.

## SVETOZAR GLIGORIC CHESS EXHIBITION:

32 local chess buffs accepted the opportunity to play, across the board, against Svetozar Gligoric, Yugoslavian Grandmaster, at a simultaneous chess exhibition presented by the Monterey Peninsula Chess Club at the Casa Alvarado Chess Center in Monterey on February 27. The Grandmaster won 27, lost four and drew one game, playing against the strongest competition that could be assembled from the local chess players.

Chuck Nystrom, Club President; Bernie Lainson, Bill Gray, of DLI, and Dick Bustamante, of Salinas, each won their game. Susan Fuhs, 10-year-old Girl Scout, of Carmel, forced the master into a stalemate position and earned a draw,

The handsome chessmaster went about the four hour task of simultaneous play with an ease and polish that could only be acquired by many years of international tournament play. He submitted graciously when interrupted during his rounds by enthusiastic fans offering a copy of one of his books or a souvenir score sheet for his autograph. With a quick smile, a congratulatory comment or a word of advice as he made his way from board to board, the master presented a pleasant personality often missing when international chess celebrities visit small chess clubs.

At the conclusion of the exhibition a huge cake was unveiled, suitably decorated, to honor the visitor's birthday. The group, led by the strong voice of Bernie Lainson, sang "Happy Birthday, Svetozar" as he blew out the candles. The cake was cut and passed to the assembled well wishers.

Gligoric promised to return to the Monterey Peninsula as soon as his time would permit. Apparently somewhat tired, having arrived from London and appearing in an exhibition in the Oakland area the day before his trip to this event, the Master nevertheless presented an excellent show and proved the advance information concerning his personality and charm correct.



## WINTER RATING TOURNAMENT:

The winter rating tournament, under the able direction of Club Tournament Director, Ron Atkinson, is now in its final games, with only a few that had to be postponed yet to be played. We will give a complete cross table in the next issue of the Gambit.

## RAPID TRANSIT TOURNAMENT:



The monthly Rapid Transit Tournament will be held at the Casa Alvarado on Thursday March 4. Winner will receive a prize and have his name and the date engraved on the Monthly Rapid Transit Champion's board at the Club meeting room.

## ANNUAL CLUB DUES:



Annual fees for Club membership are now due and payable. Regular: \$8.00, Junior: \$4.00, Married couples: \$12.00, Enlisted members of the armed forces on active duty: \$4.00. Make check payable to the Monterey Peninsula Chess Club and mail to Box 261, Monterey. Your membership card and a copy of the Club's Constitution will be sent by return mail.

## United States Chess Federation:



Check the date on your USCF card. Renew through the Club.

SVETONAR CLIBORIC CHESS TERNITION

23 local chess clubs accepted the opportunity to play... against Svetonar Cliboric, Yugoslavian Grandmaster... exhibition presented by the Monterey Peninsula Chess Club... and drew one game, playing against the strongest competition... he assembled from the local chess players.

Chuck Hystrom, Club President; Dennis Johnson, Bill Gray, and Dick... of games, each won their game. Susan Tuba, 10-year-old girl... of Cornell, forced the water into a stalemate position and earned a... draw.

The handsome chessmaster went about the four hour task of simultaneous play... with an ease and poise that could only be acquired by many years of inter-... national tournament play. He admitted graciously when interrupted during... his rounds by enthusiastic fans offering a copy of one of his books or... his score sheet for his autograph.



**MONTEREY PENINSULA CHESS CLUB**  
P. O. BOX 261 MONTEREY, CALIFORNIA 94024



**M. Morrison**  
**Chess Voice**  
P. O. Box 1622  
Oakland, Ca 94604

Cliboric promised to return to the... would permit. Apparently... appearing in an exhibition in the Oakland area the day before his trip to... this event, the Master nevertheless presented an excellent show and proved... the advance information concerning his personality and chess correct.



WINTER RATING TOURNAMENT

The winter rating tournament, under the able direction of Club Tournament... Director, Ron Atkinson, is now in its final stages, with only a few that... had to be postponed yet to be played. We will give a complete cross table... in the next issue of the Gambit.



RAPID TRANSIT TOURNAMENT

The monthly Rapid Transit Tournament will be held at the Casa Alvarado on... Thursday March 4. Winner will receive a prize and have his name and the... date engraved on the Monthly Rapid Transit Champion's board at the Club... meeting room.



ANNUAL CLUB DUES

Annual fees for Club membership are now due and payable. Regular: \$8.00... Junior: \$4.00, Married couples: \$12.00. Unlisted members of the area forced... on active duty: \$4.00. Make check payable to the Monterey Peninsula Chess... Club and mail to Box 261, Monterey. Your membership card and a copy of... the Club's Constitution will be sent by return mail.



United States Chess Federation

Check the date on your USCF card. Renew through the Club.