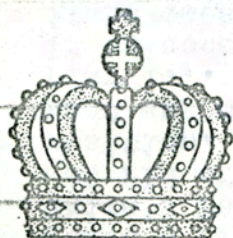


The GAMBIT



OFFICIAL PUBLICATION OF THE MONTEREY PENINSULA CHESS CLUB
P.O. BOX 261, MONTEREY, CALIFORNIA 93940

SPONSORED BY THE MONTEREY RECREATION DEPARTMENT

Vol 2 No 2

Bill Kennedy

Editor

March 1971

372 7496

CLUB OFFICERS

Chuck Nystrom	President	624 5531
Sam Gales	Vice-president	394 6472
Bill Kennedy	Secretary-treasurer	372 7496
Ron Atkinson	Tournament Director	372 6059
Frank Sutor	Team Captain	372 4987
Col C. J. Daly	USCF Regional Vice-president	624 7583
Ted Yudachfski	USCF Regional Director	372 9790
Bill Kennedy	USCF Regional Director	372 7496
Casa Alvarado Chess Center, Box 1308, Monterey, Ca 93940		372 9790

The Monterey Peninsula Chess Club meets each Thursday Evening
at the Casa Alvarado Chess Center, 467 Alvarado St., Monterey

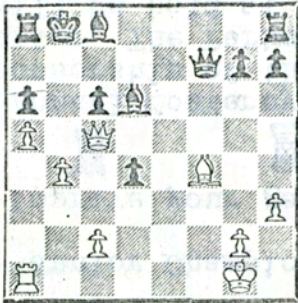
TOURNAMENT CALENDAR

- Club Championship Tournament - Now in progress - Ron Atkinson Director
Peninsula Schools Tournament - April 8 - Casa Alvarado Chess Center
Easter Crunch - 30-30 - April 10 - Casa Alvarado Chess Center
MONTEREY INTERNATIONAL OPEN - USCF- June 26-27 - Hotel San Carlos
Summer Rating Tournament - USCF - July & August - Ron Atkinson
Spring Rating Tournament - USCF - April & May - Ron Atkinson
Monterey Junior Championship Tournament - USCF - More on this later
You can improve your game by playing in your Club's Chess Tournaments



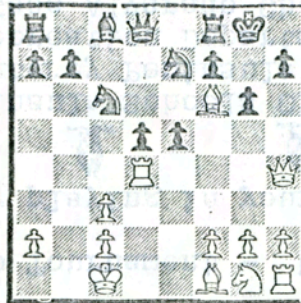
The 4th Annual Monterey Peninsula Schools Chess Tournament, under the joint sponsorship of the Monterey Peninsula Chess Club, The Casa Alvarado Chess Center, The Perks & Recreation Departments of Monterey and Pacific Grove, will be held at the Casa Alvarado Chess Center on Thursday, April 8, 1971. Entry is free to all Peninsula Students to include High School Seniors. Trophies and prizes will be awarded. Register by sending your name, address, age, school and grade to the Casa Alvarado Chess Center, P. O. Box 1308, Monterey, California 93940.

Announce the Mate!



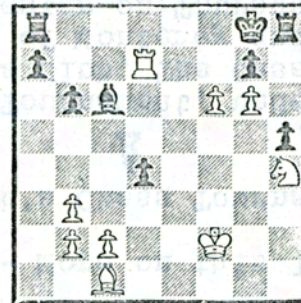
White

7. White mates in moves.



White

8. White mates in moves.



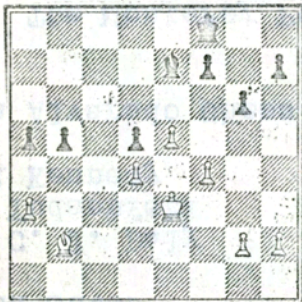
White

9. White mates in moves.

Continuing our discussion to help the novice chess player understand what to watch for during the progress of the game:

Here are examples showing, as simply as possible, winning ideas used in practical play. (See figure 1.) Here White has strong winning chances if permitted to play P-N4 sooner than just before Black's King reaches K-3. If allowed P-N4, White, by P-B5, would keep Black's King to the first two ranks and would have any winning chances resulting from this position. Black must keep his King on his side of the board and his Queen side majority needs help to become effective. So, Black must find a way to delay P-N4, or else! There is a way:

#1



Black to play

1... P-R4!

2. P-N3

If 2... P-R3 first the reply 2... P-R5 ties up White's Pawns. (Note this point of technique.) Then P-N4 is answered by PXP e.p. -

2... B-Q1

3. P-R3

K-K2

4. P-N4 P x P

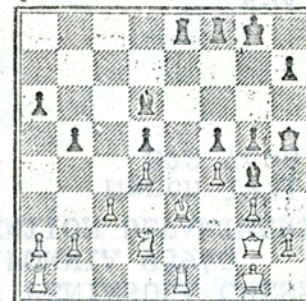
5. P x P

K-K3

Just in time! White can make no headway. Drawn game. Here, of course, Black's "winning idea" was drawing a game he could have lost.

Always make the best possible use of the right to move. You must not lose a single move.

#2



Black to play

In Figure 2 it is Black's move and he has worked up a nice attack. At this stage he sees he cannot allow Q x P ch; also his Queen's Bishop would be very strong (all White's Pawns are on black) if he could get rid of the White Knight. Examine the position. Do you get the idea? You won't need any more articles like this if you play 1... R-K5! What is White's continuation if he accepts the Rook? How does he stand if he does not? Over to you! As here (big increase in value of QB), a material sacrifice should produce compensation. The B is now worth more than the late Rook (if White has taken it)!



MONTEREY PENINSULA CHESS CLUB 1971 WINTER RATING TOURNAMENT

CROSS TABLE

1. Bernie Lainson	2017	W7	W20	W6	W4	D3	4½	
2. Bill Gray Jr.	1969	W17	D13	D8	W5	W11	4	TB:16-K
3. Mike Ewell	2033	WF10	D11	W13	W6	D1	4	TB:12-K
4. Dan Maxwell	1976	W14	D5	W11	L1	W12	3½	
5. Ted Montemurro	1664	W18	D4	D7	L2	W15	3	TB:8½-HM
6. Chuck Nystrom	1717	W15	W21	L1	L3	W14	3	TB:14-S
7. Ken Roberson	1576	L1	W19	D5	W15	D8	3	TB:13-S
8. Stan MacCarty	1732	D12	W16	D2	D14	D7	3	TB:12-S
9. John Jarowski	Unr.	L11	L10	W22	W16	W17	3	TB:6-HM
10. Frank Saulsbury	1592	LF3	W9	L15	WF21	W19	3	TB:3½-HM
11. David Henry	1669	W9	D3	L4	W20	L2	2½	TB:10-HM
12. Gerard Gerstl	1451	D8	L17	W21	W13	L4	2½	TB:13-S
13. Col. Charles Daly	1628	W16	D2	L3	L12	W20	2½	TB:12½-S
14. Chuck Wagner	1542	L4	W18	W20	D8	L6	2½	TB:12-S
15. Al Gwin	Unr.	L6	W22	W10	L7	L5	2	TB:9-HM
16. John Anderson	1380	L13	L8	W17	L9	WF21	2	TB:7½-HM
17. Bill Kennedy	1509	L2	W12	L16	W18	L9	2	TB:7-HM
18. Sam Gales	1296	L5	L14	D19	L17	W22	1½	TB:6-HM
19. Steve Hand	1361	L20	L7	D18	W22	L10	1½	TB:5½-HM
20. Frank Sutor	1597	W19	L1	L14	L11	L13	1	TB:7½-HM
21. Paul Gronseth	Unr.	W22	L6	L12	LF10	LF16	1	TB:2½-HM
22. Mike Friddle	1237	L21	L15	L9	L19	L18	0	

TB=Tie Break; HM=Harkness Median; K=Kashdan; S=Solkoff

CLASS WINNERS

Top Expert = Bernie Lainson
Top "A" Class = Bill Gray Jr.
Top "B" Class = Ted Montemurro

Top "C" Class = Ken Roberson
Top "D" Class = John Anderson
Top Unrated = John Jarowski



The Monterey Peninsula Chess Club's 1971 Championship Tournament is now under way with twenty two enthusiastic chess players, under the able direction of Tournament Director Ron Atkinson, vying for the honor of earning the crown now worn by Club Champion Bernie Lainson.

Each player meets his scheduled opponent, at the Casa, if convenient. If not convenient to meet there the players arrange to meet at a place that is convenient and play their game. Because the schedule requires about 21 weeks to complete (one game each Thursday) the pairing have been divided into two sections. When the first half of the schedule has been completed those games will be reported to USCF for adjustment of the individual's national rating. Upon completion of the second half, those games will be reported for rating adjustment and the 1971 Club Champion will be named.

Under this system members entered in the Championship Tournament can find an opponent for a serious game of chess each meeting night. If a compatible time and place can be arranged - tournament games may be played elsewhere between contestants. The Director has taken the time and trouble to type a pairing sheet for each player showing his opponent and color allocation.



The next scheduled Club Tournament is the Spring Rating event to be announced by the Tournament Director soon.

QUARTERLY BUSINESS MEETING: The membership is scheduled to meet at the Casa Alvarado at 7:30 p. m., Thursday, April 8, for the quarterly business meeting as required by Section 1, Article 5, of the Constitution and By-laws.



GLIGORIC SIMULTANEOUS EXHIBITION: Chuck Nystrom, Club President, played this game against the Yugoslavian Grandmaster in the simultaneous held at the Casa on February 27.

<u>White - Gligoric</u>	<u>Queen's Gambit Nystrom's Variation of Tarrasch Defence</u>	<u>Nystrom - Black</u>
1. P-Q4	P-QB3	17. R-B2
2. P-K4	P-Q4	18. B-R5
3. PXP	PXP	19. PXB
4. P-QB4	N-KB3	20. Q-R3
5. N-QB3	P-K3	21. BXR
6. N-KB3	B-K2	22. B-B1
7. PXP	NXP	23. P-KR4
8. B-Q3	N-Q2	24. P-B3
9. NXN	PXN	25. BXP
10. O - O	O - O	26. B-B1
11. B-KB4	N-KB3	27. B-N6
12. N-K5	B-K3	28. B-K3
13. R-K1	R-B1 (a)	29. Q-N4
14. Q-N3	N-R4	30. Q-Q4
15. B-Q2	R-QB2?!	31. QXN
16. QR-B1	P-QR3?	32. R-B3
		B-Q3
		BXN?! (b)
		P-Q5
		N-B5
		Q-N4!?
		P-Q6! (c)
		Q-N5
		Q-N6
		QXR ck
		Q-N6
		QXRP
		Q-N6
		N-Q4
		NXB
		P-KR4
		BXRP
		33. P-N3
		B-N8
		34. R-B7
		R-K1
		35. RXNP
		RXKP
		36. Q-B2
		QXQ ck
		37. KXQ
		P-R4
		38. B-B4
		B-N3
		39. R-R7
		K-B1
		40. P-B4
		R-QB4
		41. K-K3
		P-KR5
		42. K-B3
		B-R4ck
		43. K-K4
		P-N4
		44. P-B5
		K-N2
		45. B-Q5
		P-N5
		46. K-K5
		P-R6
		47. Resigns

Comments by Nystrom:

- (a) Muddling along in an unfamiliar defense. White's third move spoiled my plan to transpose into a variation of the Pirc-Robatsch (see R80/c of Chess Informant) and I'm at a loss for continuation.
- (b) If ...Q-B1 or ...Q-N1 White can add pressure with KR-QB1.
- (c) To keep his Q away from the K side, primarily.



CHESS TOURNAMENT: With a guaranteed prize fund of \$300, open to all players rated under 1800 or unrated, and a \$10 (later \$12) entry fee, there will be a hunderinger of an amateur chess tournament at the Hotel Californian (single \$7; double \$9), Van Ness & Kern in downtown FRESNO. This five round swiss event will be held on Saturday and Sunday MAY 1-2. Cash prizes for first, second and third, plus a trophy for each, in Class B, Class C, and Class D-E and unrated. First round starts at 11:30 Saturday morning. Mail Entry Fes to: Bill Myers, Box 67, Sanger, Calif, 93657. Send name, address, USCF rating and expiration date with check. USCF rated. You must be member of, or join USCF, at time of registration.



ANNUAL CLUB DUES: Still a few ACTIVE members attending our meetings who have not paid their 1971 Club dues. Make your check payable to the Monterey Peninsula Chess Club. Regular \$8, Junior and enlisted military, \$4. Your membership card and a copy of the Club's Constitution and By-laws will sent by return mail. While you're at it, check your USCF date. Renew thru the Club Treasurer.

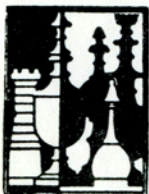


cc-file

7th Annual Monterey International Open Chess Tournament - June 26 & 27, 1971

presented by the
MONTEREY PENINSULA CHESS CLUB
In the Pacific Room of the Hotel San Carlos
Franklin and Calle Principal, Monterey, California

Tournament Director: USCF Region VIII & California State Chess
Federation Director Ted Yudacufski



TOURNAMENT SCHEDULE

FIVE ROUNDS SWISS

SATURDAY, JUNE 26, 1971

8:30 a.m. to 10:30 a.m.—Registration at Hotel San Carlos Pacific Room
10:45 a.m.—Players Meeting in Pacific Room



11 a.m.	Round 1	40 moves in 1½ hours		SUNDAY, JUNE 27, 1971
3 p.m.	Round 2	40 moves in 1½ hours	9 a.m.	Round 4 45 moves in 2 hours
7 p.m.	Round 3	45 moves in 2 hours	2 p.m.	Round 5 45 moves in 2 hours

\$800 GUARANTEED PRIZE FUND

MORE IF
ENTRIES PERMIT

1ST PRIZE	\$200	plus TROPHY
2ND PRIZE	\$100	
3RD PRIZE	\$ 65	
4TH PRIZE	\$ 50	
CLASS A 1ST	\$ 50	plus TROPHY
CLASS A 2ND	\$ 25	
CLASS B 1ST	\$ 50	plus TROPHY
CLASS B 2ND	\$ 25	
CLASS C 1ST	\$ 50	plus TROPHY
CLASS C 2ND	\$ 25	

CLASS D AND UNDER - 1ST	\$ 40	plus TROPHY
CLASS D AND UNDER - 2ND	\$ 20	
WOMEN'S 1ST	\$ 40	plus TROPHY
UNRATED 1ST	\$ 30	plus TROPHY
JUNIOR 1ST (JR.-UNDER 18)	\$ 30	plus TROPHY
PRIZE TO WINNER OF UPSET GAME		
TROPHY TO BEST MONTEREY PLAYER		



Advance, \$13;
After JUNE 24, \$15.
Juniors (under 18), \$9;
After JUNE 24, \$11

Must be member of, or join at time of registration, the United States Chess Federation.

For room reservations write directly to Hotel San Carlos, Box 551, Monterey, Calif. 93940. PLEASE MENTION THE CHESS TOURNAMENT. Rates start at:— Singles, \$10 Double, \$13; Twin, \$14;

Players are requested to bring Staunton style chess sets and timers.

Special Rapid-Transit Tournament will be held at the Casa Alvarado Chess Center, 494 Alvarado St., Monterey, at 8 p.m., Friday, June 25
Ted Yudacufski will direct. Cash prizes for winners.

To: Monterey Peninsula Chess Club
P.O. Box 261
Monterey, Calif. 93940

Yes, here is my advance entry for the 1971 Monterey International Open Chess Tournament at the special money saving rate.

Enclosed entry fee: \$ _____

NAME _____ USCF RATING _____

ADDRESS _____

CITY _____ ZIP _____ BIRTH DATE _____
(under 18)

Monterey International Open
Chess Tournament - June 26 & 27, 1971

presented by the
MONTEREY PENINSULA CHESS CLUB
in the Pacific Room of the Hotel San Carlos
Monterey and Calle Principal, Monterey, California

Tournament Director: USCF Region VII & California State Chess
Federation Director: Ted Yudansky

TOURNAMENT SCHEDULE

SATURDAY, JUNE 26, 1971
8:30 a.m. to 10:30 a.m. - Registration at Hotel San Carlos Pacific Room
10:45 a.m. - Players Meeting in Pacific Room

SUNDAY, JUNE 27, 1971
9:00 a.m. to 11:00 a.m. - Round 1
11:30 a.m. to 1:30 p.m. - Round 2
2:00 p.m. to 4:00 p.m. - Round 3
4:30 p.m. to 6:30 p.m. - Round 4



MONTEREY PENINSULA CHESS CLUB
P.O. BOX 261 • MONTEREY, CALIFORNIA 93940



M. Morrison
Box 1622
Oakland Ca 94604



Special Rapid-Turnament Tournament will be held at the Club Monterey
Chess Center, 424 Avenida St. Monterey, CA 93940, Friday, June 25
Ted Yudansky will direct the tournament.

To: Monterey Peninsula Chess Club
P.O. Box 261
Monterey, Calif. 93940

Yes, here is my advance entry for the 1971 Monterey International Open
Chess Tournament at the special money entry rate.

Enclosed entry fee: \$ _____

NAME _____

ADDRESS _____

CITY _____

BIRTH DATE _____

(under 18)